

**April 2010**
**No.OCB415**
**REVISED EDITION-E**

# PARTS CATALOG

## R410A

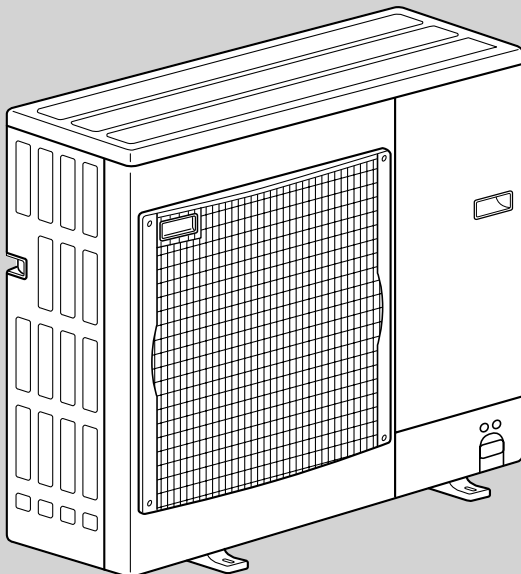
**Outdoor unit**
**[model names]**
**PUHZ-P100VHA2**
**PUHZ-P125VHA2**
**PUHZ-P140VHA2**
**PUHZ-P100VHA3**
**PUHZ-P125VHA3**
**PUHZ-P140VHA3**
**PUHZ-P100YHA**
**PUHZ-P125YHA**
**PUHZ-P140YHA**
**[Service Ref.]**
**PUHZ-P100VHA2.UK**
**PUHZ-P125VHA2.UK**
**PUHZ-P125VHA2<sub>1</sub>.UK**
**PUHZ-P140VHA2.UK**
**PUHZ-P140VHA2<sub>1</sub>.UK**
**PUHZ-P100VHA3.UK**
**PUHZ-P100VHA3R1.UK**
**PUHZ-P100VHA3R2.UK**
**PUHZ-P125VHA3.UK**
**PUHZ-P125VHA3R1.UK**
**PUHZ-P125VHA3R2.UK**
**PUHZ-P140VHA3.UK**
**PUHZ-P140VHA3R1.UK**
**PUHZ-P140VHA3R2.UK**
**PUHZ-P100YHA.UK**
**PUHZ-P100YHAR1.UK**
**PUHZ-P125YHA.UK**
**PUHZ-P125YHAR1.UK**
**PUHZ-P140YHA.UK**
**PUHZ-P140YHAR1.UK**
**Revision:**

- PUHZ-P100/125/140 YHAR1.UK are added in REVISED EDITION-E.
- Some descriptions have been modified.

- Please void OCB415 REVISED EDITION-D.

**Note:**

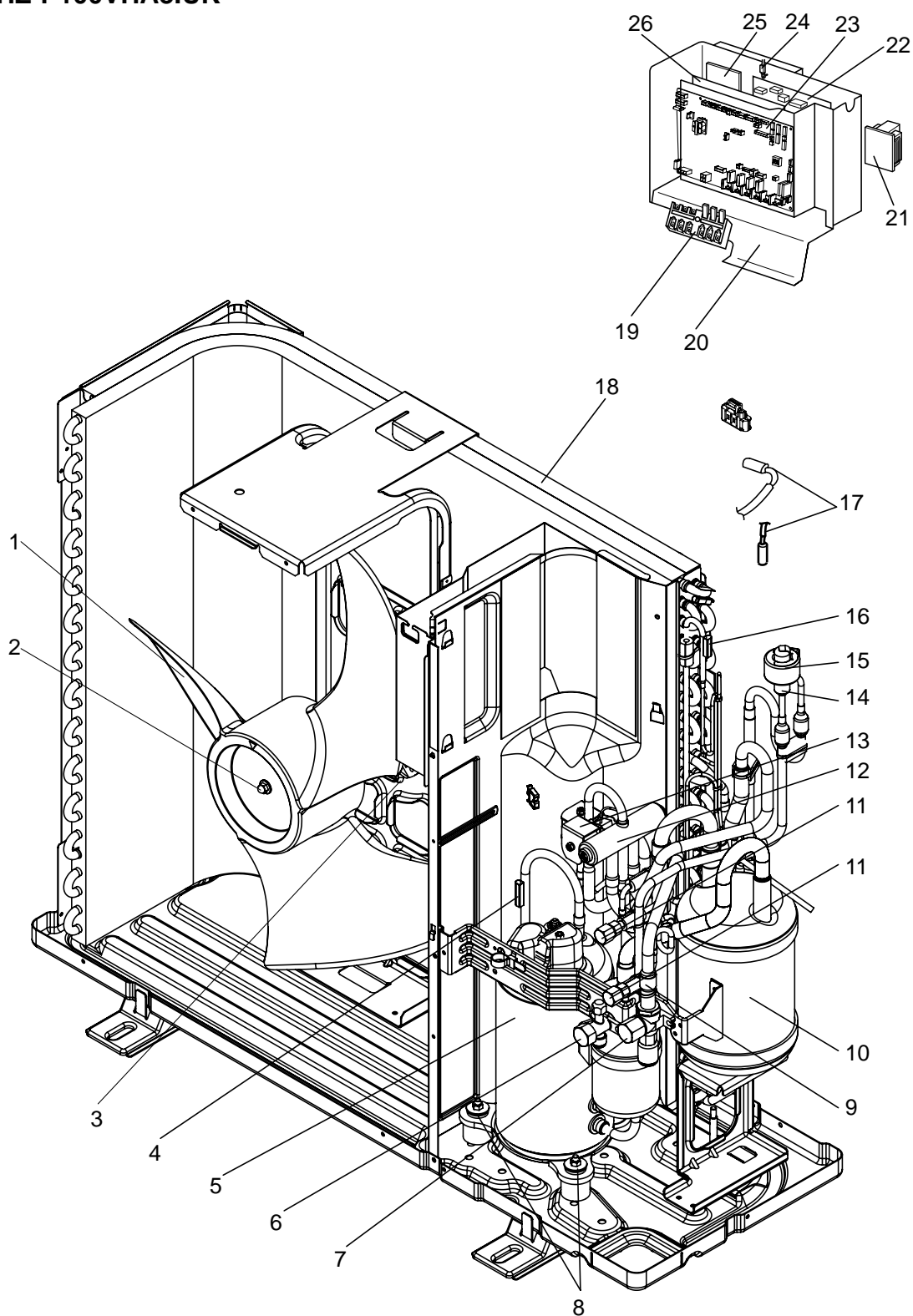
- RoHS compliant products have <G> mark on the spec name plate.


**PUHZ-P100VHA2.UK  
PUHZ-P100VHA3.UK**
**CONTENTS**

1. RoHS PARTS LIST.....	2
-------------------------	---

**SERVICE MANUAL (OCH415)**

FUNCTIONAL PARTS  
 PUHZ-P100VHA2.UK  
 PUHZ-P100VHA3.UK



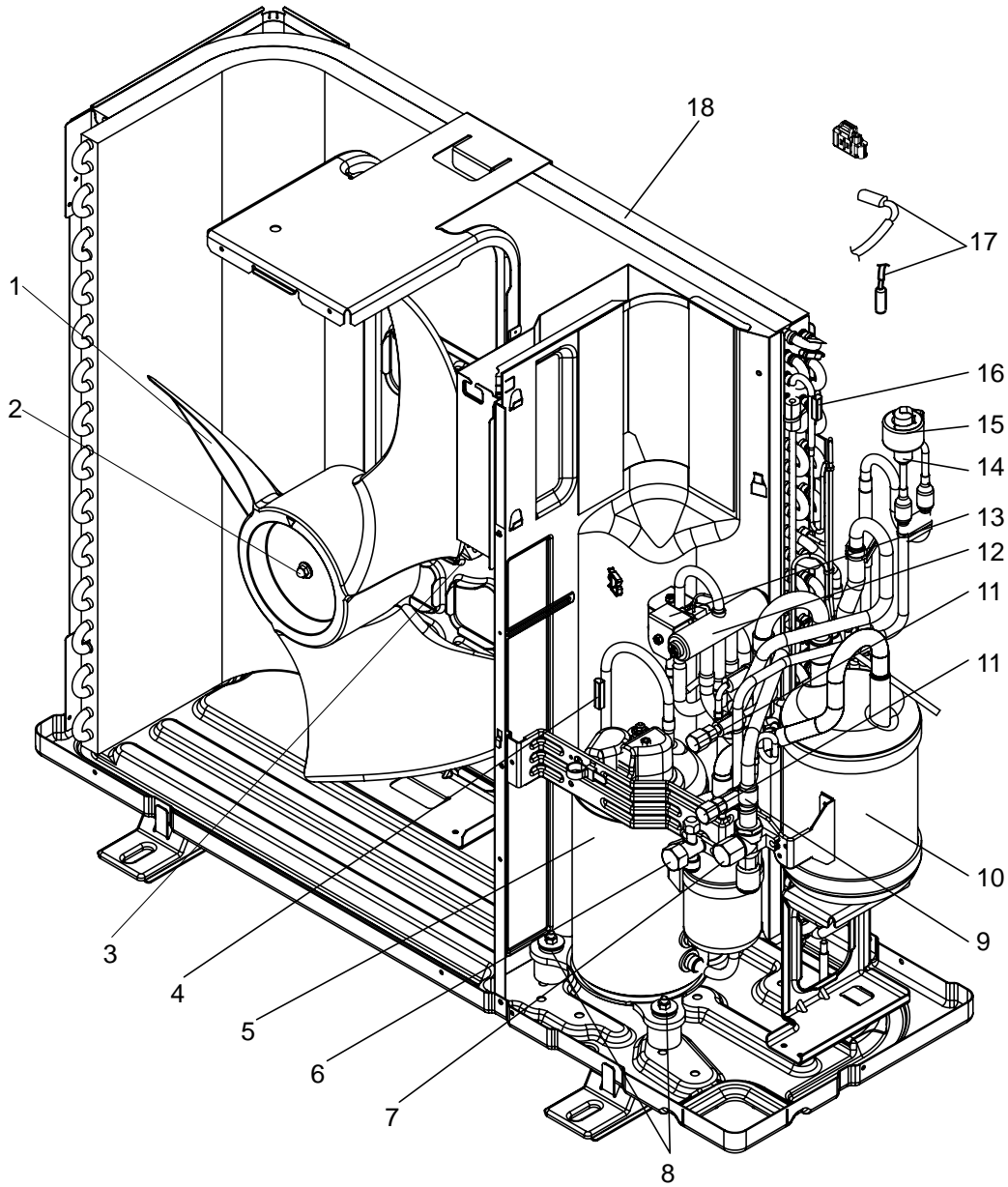
Part numbers that are circled are not shown in the figures.

No.	RoHS	Part No.	Part Name	Specification	Q'ty/set		Remarks (Drawing No.)	Wiring Diagram Symbol	Recom- mended Q'ty
					PUHZ-P100				
					VHA2.UK	VHA3.UK			
1	G	S70 K04 115	PROPELLER FAN		1	1			
2	G	S70 K01 097	NUT		1	1			
3	G	S70 E10 763	FAN MOTOR		1	1		MF1	
4	G	S70 E33 202	THERMISTOR (DISCHARGE)		1	1		TH4	
5	G	S70 E41 400	COMPRESSOR	TNB220FLBM	1	1		MC	
6	G	S70 500 418	STOP VALVE	3/8	1	1			
7	G	S70 E07 411	STOP VALVE	5/8	1	1			
8	G	S70 E01 004	RUBBER MOUNT		3	3			
9	G	S70 36L 450	STRAINER	#50	1	1			
10	G	S70 E50 440	ACCUMULATOR		1	1			
11	G	S70 E02 413	CHARGE PLUG		2	2			
12	G	S70 E04 403	4-WAY VALVE		1	1			
13	G	S70 E01 242	SOLENOID VALVE COIL <4-WAY VALVE>		1	1		21S4	
14	G	S70 E80 401	EXPANSION VALVE		1	1			
15	G	S70 E81 402	LINER EXPANSION VALVE COIL		1	1		LEV(A)	
16	G	S70 E32 202	THERMISTOR (OUTDOOR PIPE)		1	1		TH3	
17	G	S70 E31 202	THERMISTOR (OUTDOOR 2-PHASE PIPE, OUTDOOR)		1	1		TH6, 7	
18	G	S70 E50 408	HEAT EXCHANGER		1	1			
19	G	S70 E05 716	TERMINAL BLOCK	6P (L,N,⊕,S1,S2,S3)	1	1		TB1	
20	G	S70 E10 316	CONTROL BOX ASSY		1				
	G	S70 E34 316	CONTROL BOX ASSY			1			
21	G	S70 K20 259	REACTOR		1	1		DCL	
22	G	S70 0B2 313	POWER CIRCUIT BOARD		1	1		P.B.	
23	G	S70 0B1 315	CONTROLLER CIRCUIT BOARD		1			C.B.	
	G	S70 0B5 315	CONTROLLER CIRCUIT BOARD			1		C.B.	
24	G	S70 E30 202	THERMISTOR (HEATSINK)		1	1		TH8	
25	G	S70 E20 233	ACTIVE FILTER MODULE		1	1		ACTM	
26	G	S70 E20 346	NOISE FILTER CIRCUIT BOARD		1	1		N.F.	
27	G	S70 E10 208	HIGH PRESSURE SWITCH	OFF 4.14MPa	1	1		63H	
28	G	S70 42H 467	MUFFLER		1	1			
29	G	S70 E05 255	MAIN SMOOTHING CAPACITOR		1	1		CB	

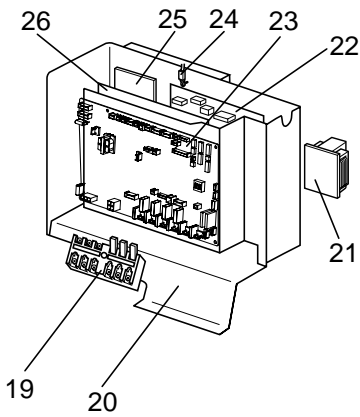
**FUNCTIONAL PARTS**

**PUHZ-P100VHA3R1.UK PUHZ-P100VHA3R2.UK**

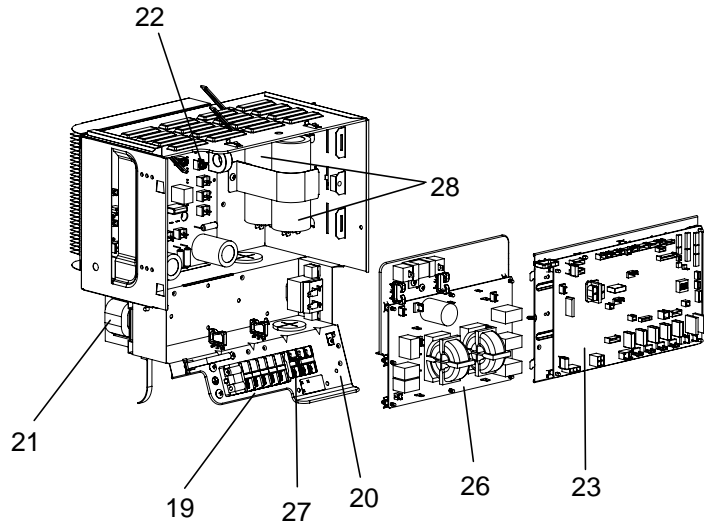
**PUHZ-P100YHA.UK PUHZ-P100YHAR1.UK**



**(PUHZ-P100V)**



**(PUHZ-P100Y)**

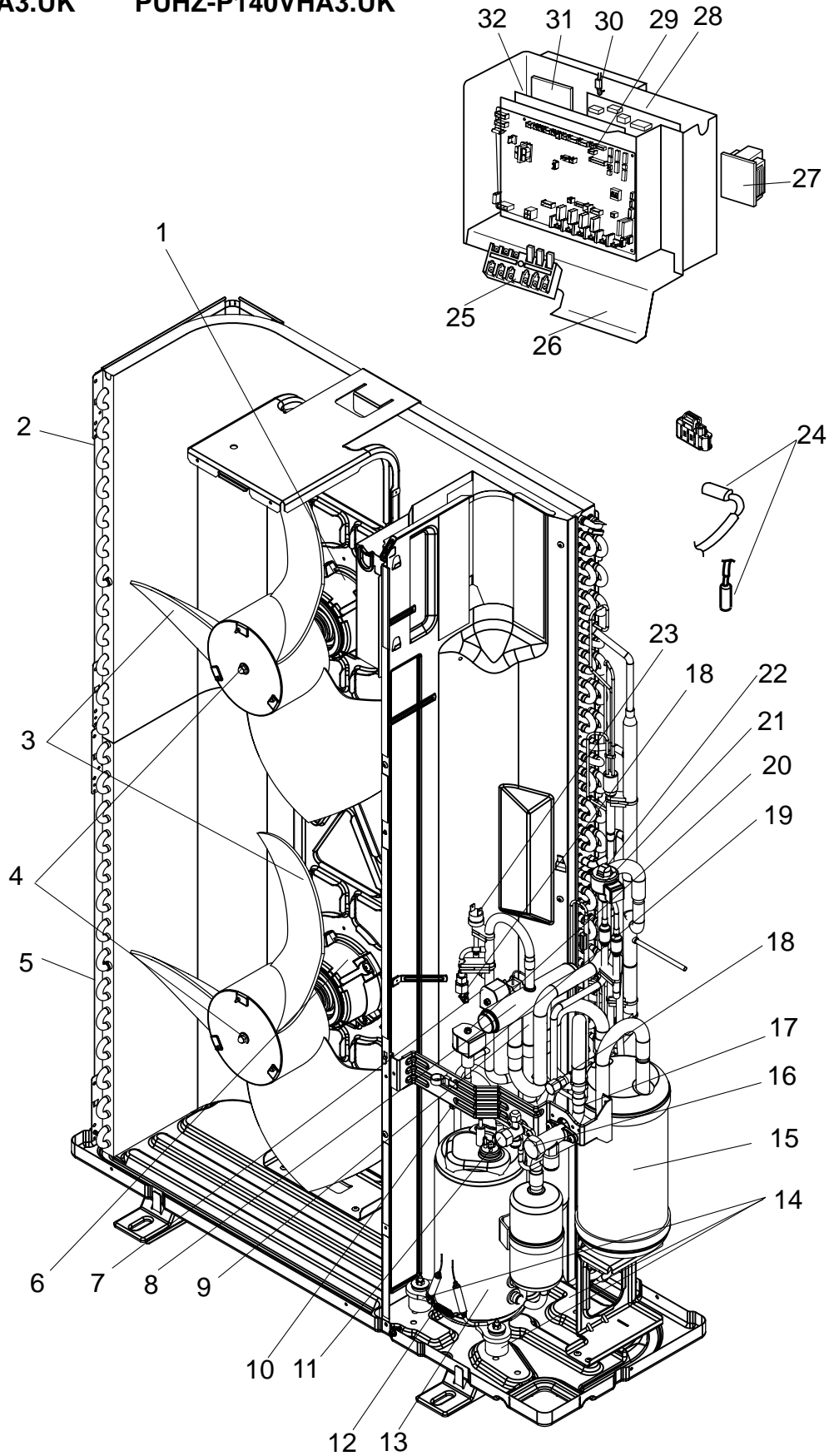


Part numbers that are circled are not shown in the figures.

No.	RoHS	Part No.	Part Name	Specification	Q'ty/set				Remarks (Drawing No.)	Wiring Diagram Symbol	Recom- mended Q'ty
					PUHZ-P100						
					VHA3		YHA	YHAR1			
					R1.UK	R2.UK	.UK	.UK			
1	G	S70 K04 115	PROPELLER FAN		1	1	1	1			
2	G	S70 K01 097	NUT		1	1	1	1			
3	G	S70 E10 763	FAN MOTOR		1	1	1	1		MF1	
4	G	S70 E33 202	THERMISTOR (DISCHARGE)		1					TH4	
5	G	S70 E41 400	COMPRESSOR	TNB220FLHMT	1	1				MC	
	G	S70 E43 400	COMPRESSOR	TNB220FLCMT			1	1		MC	
6	G	S70 600 418	STOP VALVE	3/8	1	1	1	1			
7	G	S70 E07 411	STOP VALVE	5/8	1	1	1	1			
8	G	S70 E01 004	RUBBER MOUNT		3	3	3	3			
9	G	S70 36L 450	STRAINER	#50	1	1	1	1			
10	G	S70 E10 440	ACCUMULATOR		1	1	1	1			
11	G	S70 E02 413	CHARGE PLUG		2	2	2	2			
12	G	S70 E04 403	4-WAY VALVE		1	1	1	1			
13	G	S70 E01 242	SOLENOID VALVE COIL <4-WAY VALVE>		1	1	1	1		21S4	
14	G	S70 E80 401	EXPANSION VALVE		1	1	1	1			
15	G	S70 E81 402	LINER EXPANSION VALVE COIL		1	1	1	1		LEV(A)	
16	G	S70 E32 202	THERMISTOR (OUTDOOR PIPE)		1					TH3	
	G	S70 E47 202	THERMISTOR (OUTDOOR PIPE)			1	1	1		TH3	
17	G	S70 E31 202	THERMISTOR (OUTDOOR 2-PHASE PIPE, OUTDOOR)		1	1	1	1		TH6, 7	
18	G	S70 E50 408	HEAT EXCHANGER		1	1	1	1			
19	G	S70 E05 716	TERMINAL BLOCK	6P (L,N,⊙,S1,S2,S3)	1	1				TB1	
	G	S70 E09 716	TERMINAL BLOCK	5P (L1,L2,L3,N,⊙)			1	1		TB1	
20	G	S70 E34 316	CONTROL BOX ASSY		1						
	G	S70 E38 316	CONTROL BOX ASSY			1					
	G	S70 E42 316	CONTROL BOX ASSY				1				
	G	S70 E45 316	CONTROL BOX ASSY					1			
21	G	S70 K20 259	REACTOR		1					DCL	
	G	S70 K40 259	REACTOR			1				DCL	
	G	S70 K50 259	REACTOR				1	1		DCL	
22	G	S70 0B2 313	POWER CIRCUIT BOARD		1					P.B.	
	G	S70 0B5 313	POWER CIRCUIT BOARD			1				P.B.	
	G	S70 0B7 313	POWER CIRCUIT BOARD				1			P.B.	
	G	S70 0B8 313	POWER CIRCUIT BOARD					1		P.B.	
23	G	S70 0B5 315	CONTROLLER CIRCUIT BOARD		1					C.B.	
	G	S70 0B7 315	CONTROLLER CIRCUIT BOARD			1	1			C.B.	
	G	S70 0B8 315	CONTROLLER CIRCUIT BOARD					1		C.B.	
24	G	S70 E30 202	THERMISTOR (HEATSINK)		1					TH8	
25	G	S70 E20 233	ACTIVE FILTER MODULE		1					ACTM	
26	G	S70 E20 346	NOISE FILTER CIRCUIT BOARD		1					N.F.	
	G	S70 E30 346	NOISE FILTER CIRCUIT BOARD				1	1		N.F.	
27	G	S70 E08 716	TERMINAL BLOCK	3P (S1,S2,S3)			1	1		TB2	
28	G	S70 E61 255	MAIN SMOOTHING CAPACITOR				2	2		CB1,2	
②9	G	S70 E10 208	HIGH PRESSURE SWITCH	OFF 4.14MPa	1	1	1	1		63H	
③0	G	S70 42H 467	MUFFLER		1	1	1	1			
③1	G	S70 E45 202	THERMISTOR (COMP.SHELL)			1	1	1		TH32	
③2	G	S70 E05 255	MAIN SMOOTHING CAPACITOR		1	1				CB	

**FUNCTIONAL PARTS**  
**PUHZ-P125VHA2.UK**  
**PUHZ-P125VHA21.UK**  
**PUHZ-P125VHA3.UK**

**PUHZ-P140VHA2.UK**  
**PUHZ-P140VHA21.UK**  
**PUHZ-P140VHA3.UK**

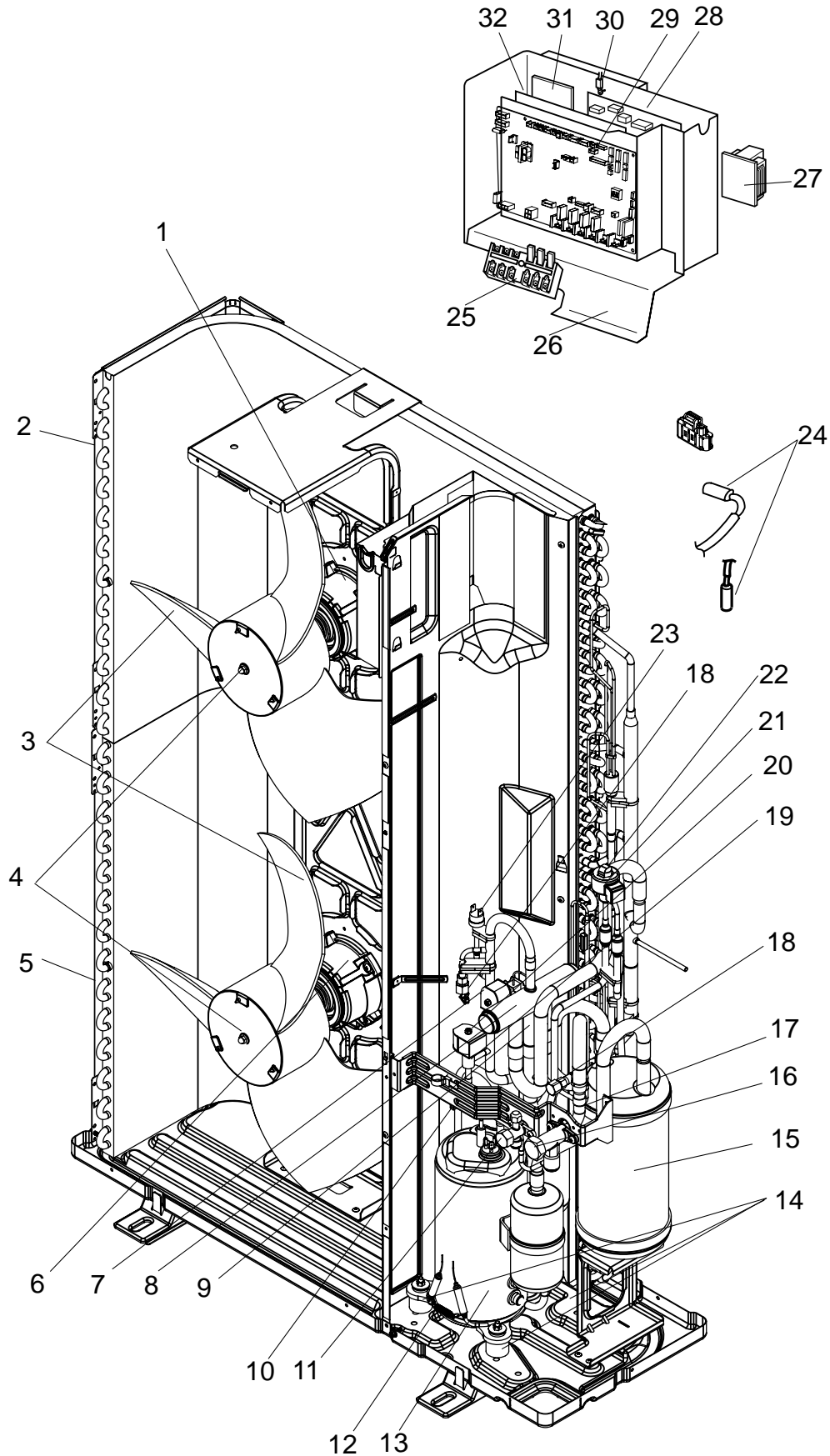


Part numbers that are circled are not shown in the figures.

No.	RoHS	Part No.			Part Name	Specification	Q'ty/set						Remarks (Drawing No.)	Wiring Diagram Symbol	Recom- mended Q'ty
							PUHZ-P								
							125	140	125	140	125	140			
							VHA2.UK		VHA2i.UK		VHA3.UK				
1	G	S70	E10	763	FAN MOTOR		1	1	1	1	1	1		MF1	
2	G	S70	R80	408	HEAT EXCHANGER (TOP)		1	1	1	1	1	1			
3	G	S70	K04	115	PROPELLER FAN		2	2	2	2	2	2			
4	G	S70	K01	097	NUT		2	2	2	2	2	2			
5	G	S70	R90	408	HEAT EXCHANGER(UNDER)		1	1	1	1	1	1			
6	G	S70	E20	763	FAN MOTOR		1	1	1	1	1	1		MF2	
7	G	S70	E44	242	SOLENOID COIL <4-WAY VALVE>		1	1						21S4	
	G	S70	E55	242	SOLENOID COIL <4-WAY VALVE>				1	1	1	1		21S4	
8	G	S70	E03	403	4-WAY VALVE		1	1							
	G	S70	E05	403	4-WAY VALVE				1	1	1	1			
9	G	S70	42H	467	MUFFLER		1	1	1	1	1	1			
10	G	S70	E36	202	THERMISTOR (DISCHARGE)		1	1	1	1	1	1		TH4	
11	G	S70	500	418	STOP VALVE	3/8	1	1	1	1	1	1			
12	G	S70	0B4	236	CRANKCASE HEATER		1	1	1	1	1	1		CH	
13	G	S70	E42	400	COMPRESSOR	TNB306FPGM	1	1	1	1	1	1		MC	
14	G	S70	E01	004	RUBBER MOUNT		3	3	3	3	3	3			
15	G	S70	E60	440	ACCUMULATOR		1	1	1	1	1	1			
16	G	S70	E07	411	STOP VALVE	5/8	1	1	1	1	1	1			
17	G	S70	36L	450	STRAINER	#50	1	1	1	1	1	1			
18	G	S70	E02	413	CHARGE PLUG		2	2	2	2	2	2			
19	G	S70	282	403	BYPASS VALVE		1	1	1	1	1	1			
20	G	S70	451	242	BYPASS VALVE COIL		1	1	1	1	1	1		SV	
21	G	S70	E81	402	LEV COIL		1	1	1	1	1	1		LEV(A)	
22	G	S70	E90	401	EXPANSION VALVE		1	1	1	1	1	1			
23	G	S70	E10	208	HIGH PRESSURE SWITCH	OFF4.14MPa	1	1	1	1	1	1		63H	
24	G	S70	E31	202	THERMISTOR (OUTDOOR 2-PHASE PIPE, OUTDOOR)		1	1	1	1	1	1		TH6,7	
25	G	S70	E05	716	TERMINAL BLOCK	6P(L,N,⊕,S1,S2,S3)	1	1	1	1	1	1		TB1	
26	G	S70	E20	316	CONTROL BOX ASSY		1								
	G	S70	E30	316	CONTROL BOX ASSY			1							
	G	S70	E21	316	CONTROL BOX ASSY				1						
	G	S70	E31	316	CONTROL BOX ASSY					1					
	G	S70	E35	316	CONTROL BOX ASSY						1				
	G	S70	E36	316	CONTROL BOX ASSY							1			
27	G	S70	K20	259	REACTOR		1	1	1	1	1	1		DCL	
28	G	S70	0B3	313	POWER CIRCUIT BOARD		1	1	1	1	1	1		P.B.	
29	G	S70	0B1	315	CONTROLLER CIRCUIT BOARD		1	1	1	1				C.B.	
	G	S70	0B5	315	CONTROLLER CIRCUIT BOARD						1	1		C.B.	
30	G	S70	E30	202	THERMISTOR (HEATSINK)		1	1	1	1	1	1		TH8	
31	G	S70	E20	233	ACTIVE FILTER MODULE		1	1	1	1	1	1		ACTM	
32	G	S70	E20	346	NOISE FILTER CIRCUIT BOARD		1	1	1	1	1	1		N.F.	
33	G	S70	E37	202	THERMISTOR (OUTDOOR PIPE)		1	1	1	1	1	1		TH3	
34	G	S70	E05	255	MAIN SMOOTHING CAPACITOR		1	1	1	1	1	1		CB	

**FUNCTIONAL PARTS**  
**PUHZ-P125VHA3R1.UK**  
**PUHZ-P125VHA3R2.UK**

**PUHZ-P140VHA3R1.UK**  
**PUHZ-P140VHA3R2.UK**



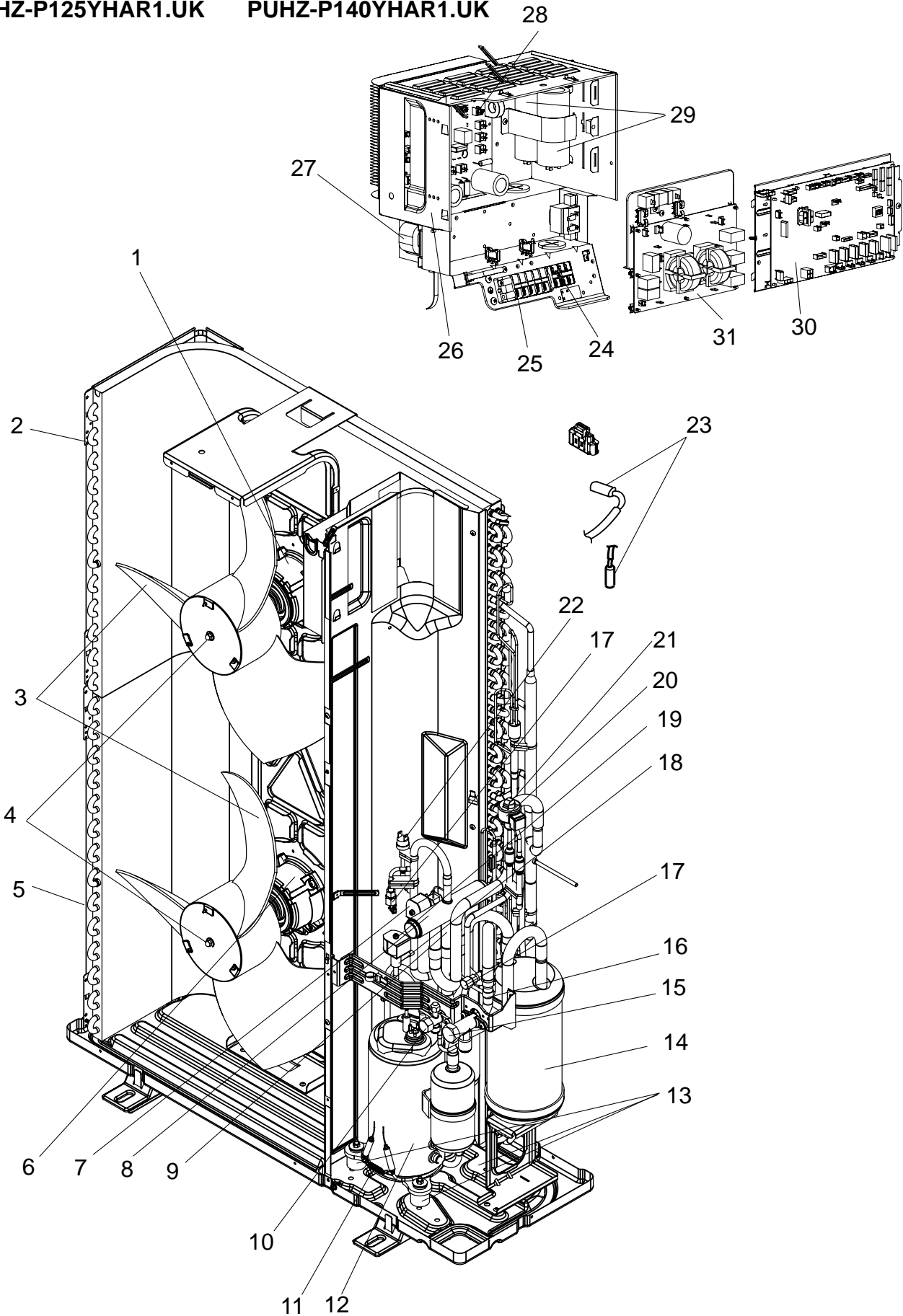


Part numbers that are circled are not shown in the figures.

No.	RoHS	Part No.	Part Name	Specification	Q'ty/set				Remarks (Drawing No.)	Wiring Diagram Symbol	Recom- mended Q'ty
					PUHZ-P						
					125 VHA3R1.UK	140	125 VHA3R2.UK	140			
1	G	S70 E10 763	FAN MOTOR		1	1	1	1		MF1	
2	G	S70 R80 408	HEAT EXCHANGER (TOP)		1	1	1	1			
3	G	S70 K04 115	PROPELLER FAN		2	2	2	2			
4	G	S70 K01 097	NUT		2	2	2	2			
5	G	S70 R90 408	HEAT EXCHANGER (UNDER)		1	1	1	1			
6	G	S70 E20 763	FAN MOTOR		1	1	1	1		MF2	
7	G	S70 E55 242	SOLENOID COIL (4-WAY VALVE)		1	1	1	1		21S4	
8	G	S70 E05 403	4-WAY VALVE		1	1	1	1			
9	G	S70 42H 467	MUFFLER		1	1	1	1			
10	G	S70 E36 202	THERMISTOR (DISCHARGE)		1	1				TH4	
11	G	S70 600 418	STOP VALVE	3/8	1	1	1	1			
12	G	S70 0B4 236	CRANKCASE HEATER		1	1	1	1		CH	
13	G	S70 E42 400	COMPRESSOR	TNB306FPGM	1	1	1	1		MC	
14	G	S70 E01 004	RUBBER MOUNT		3	3	3	3			
15	G	S70 E11 440	ACCUMULATOR		1	1	1	1			
16	G	S70 E07 411	STOP VALVE	5/8	1	1	1	1			
17	G	S70 36L 450	STRAINER	#50	1	1	1	1			
18	G	S70 E02 413	CHARGE PLUG		2	2	2	2			
19	G	S70 282 403	BYPASS VALVE		1	1	1	1			
20	G	S70 451 242	BYPASS VALVE COIL		1	1	1	1		SV	
21	G	S70 E81 402	LEV COIL		1	1	1	1		LEV(A)	
22	G	S70 E90 401	EXPANSION VALVE		1	1	1	1			
23	G	S70 E10 208	HIGH PRESSURE SWITCH	OFF 4.14MPa	1	1	1	1		63H	
24	G	S70 E31 202	THERMISTOR (OUTDOOR 2-PHASE PIPE, OUTDOOR)		1	1	1	1		TH6,7	
25	G	S70 E05 716	TERMINAL BLOCK	6P(L,N,⊕,S1,S2,S3)	1	1	1	1		TB1	
26	G	S70 E35 316	CONTROL BOX ASSY		1						
	G	S70 E36 316	CONTROL BOX ASSY			1					
	G	S70 E39 316	CONTROL BOX ASSY				1				
	G	S70 E41 316	CONTROL BOX ASSY					1			
27	G	S70 K20 259	REACTOR		1	1				DCL	
	G	S70 K40 259	REACTOR				1	1		DCL	
28	G	S70 0B3 313	POWER CIRCUIT BOARD		1	1				P.B.	
	G	S70 0B5 313	POWER CIRCUIT BOARD				1	1		P.B.	
29	G	S70 0B5 315	CONTROLLER CIRCUIT BOARD		1	1				C.B.	
	G	S70 0B7 315	CONTROLLER CIRCUIT BOARD				1	1		C.B.	
30	G	S70 E30 202	THERMISTOR (HEATSINK)		1	1				TH8	
31	G	S70 E20 233	ACTIVE FILTER MODULE		1	1				ACTM	
32	G	S70 E20 346	NOISE FILTER CIRCUIT BOARD		1	1				N.F.	
33	G	S70 E46 202	THERMISTOR (COMP.SHELL)				1	1		TH32	
34	G	S70 E37 202	THERMISTOR (OUTDOOR PIPE)		1	1	1	1		TH3	
35	G	S70 E05 255	MAIN SMOOTHING CAPACITOR		1	1	1	1		CB	

**FUNCTIONAL PARTS**  
**PUHZ-P125YHA.UK**  
**PUHZ-P125YHAR1.UK**

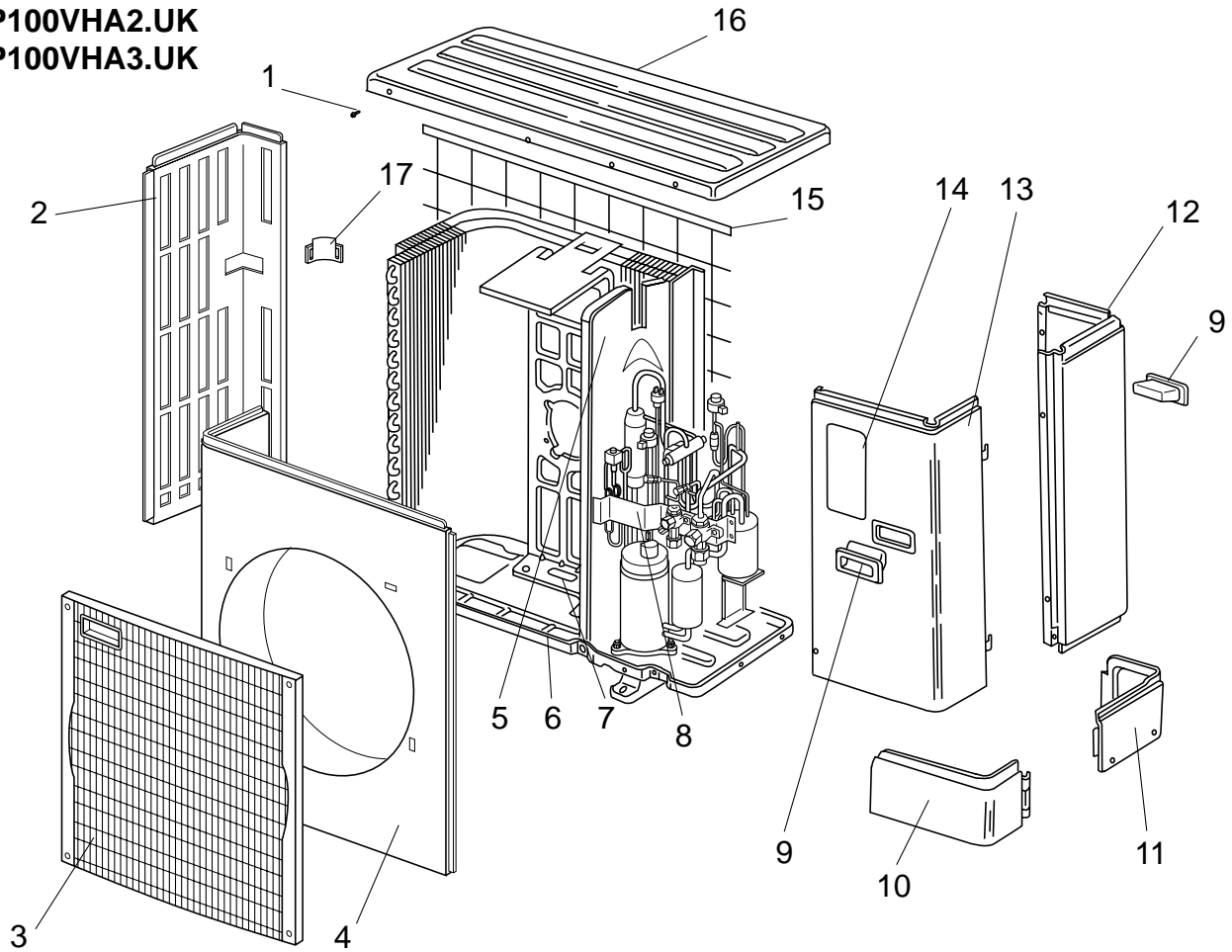
**PUHZ-P140YHA.UK**  
**PUHZ-P140YHAR1.UK**



Part numbers that are circled are not shown in the figures.

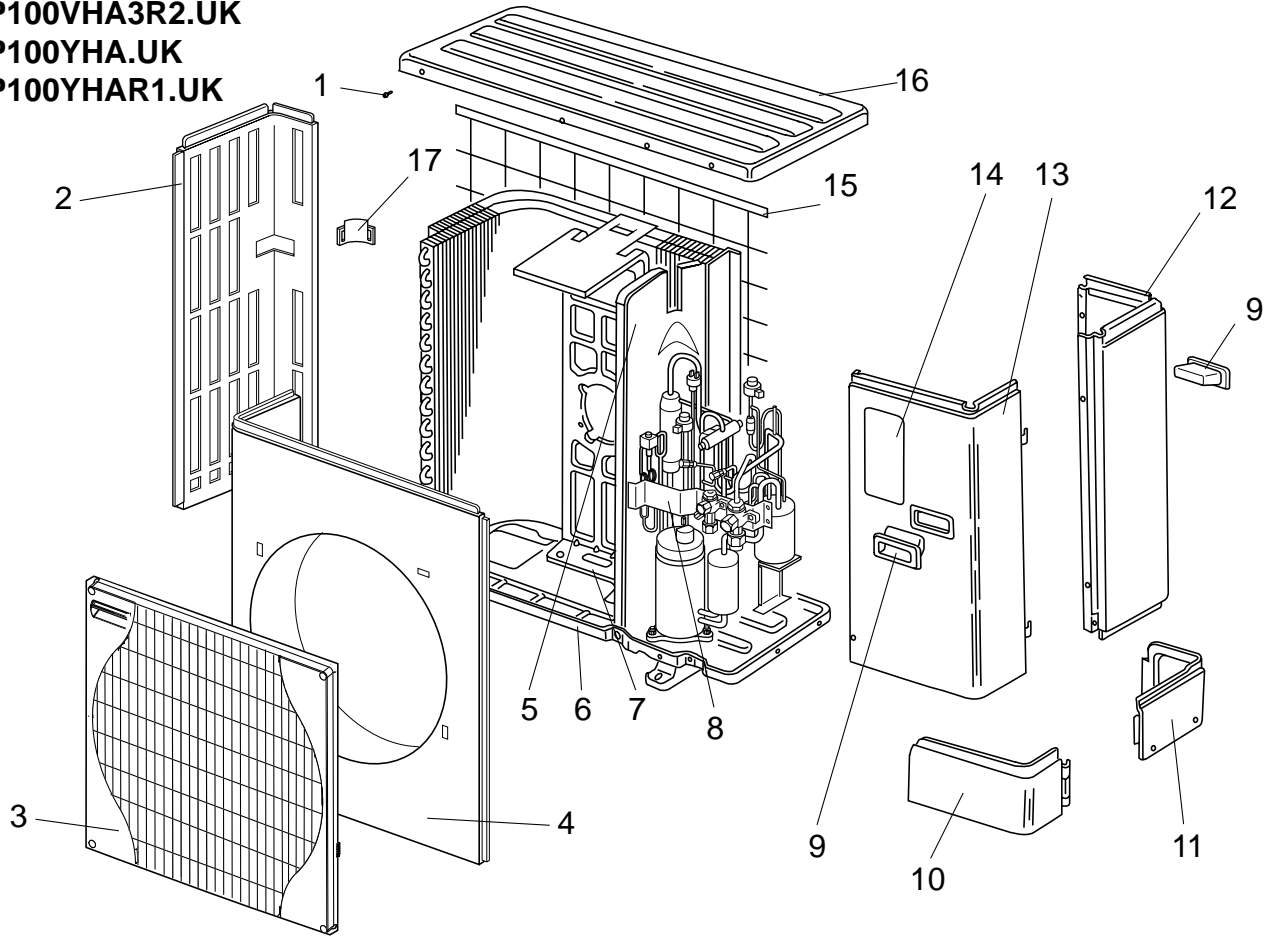
No.	RoHS	Part No.	Part Name	Specification	Q'ty/set				Remarks (Drawing No.)	Wiring Diagram Symbol	Recommended Q'ty
					PUHZ-P-YHA.UK		PUHZ-P-YHAR1.UK				
					125	140	125	140			
1	G	S70 E10 763	FAN MOTOR		1	1	1	1		MF1	
2	G	S70 R80 408	HEAT EXCHANGER (TOP)		1	1	1	1			
3	G	S70 K04 115	PROPELLER FAN		2	2	2	2			
4	G	S70 K01 097	NUT		2	2	2	2			
5	G	S70 R90 408	HEAT EXCHANGER (UNDER)		1	1	1	1			
6	G	S70 E20 763	FAN MOTOR		1	1	1	1		MF2	
7	G	S70 E55 242	SOLENOID COIL (4-WAY VALVE)		1	1	1	1		21S4	
8	G	S70 E05 403	4-WAY VALVE		1	1	1	1			
9	G	S70 42H 467	MUFFLER		1	1	1	1			
10	G	S70 600 418	STOP VALVE	3/8	1	1	1	1			
11	G	S70 0B4 236	CRANKCASE HEATER		1	1	1	1		CH	
12	G	S70 E44 400	COMPRESSOR	TNB306FPNM	1	1	1	1		MC	
13	G	S70 E01 004	RUBBER MOUNT		3	3	3	3			
14	G	S70 E11 440	ACCUMULATOR		1	1	1	1			
15	G	S70 E07 411	STOP VALVE	5/8	1	1	1	1			
16	G	S70 36L 450	STRAINER	#50	1	1	1	1			
17	G	S70 E02 413	CHARGE PLUG		2	2	2	2			
18	G	S70 282 403	BYPASS VALVE		1	1	1	1			
19	G	S70 451 242	BYPASS VALVE COIL		1	1	1	1		SV	
20	G	S70 E81 402	LEV COIL		1	1	1	1		LEV(A)	
21	G	S70 E90 401	EXPANSION VALVE		1	1	1	1			
22	G	S70 E10 208	HIGH PRESSURE SWITCH	OFF 4.14MPa	1	1	1	1		63H	
23	G	S70 E31 202	THERMISTOR (OUTDOOR 2-PHASE PIPE, OUTDOOR)		1	1	1	1		TH6,7	
24	G	S70 E08 716	TERMINAL BLOCK	3P (S1,S2,S3)	1	1	1	1		TB2	
25	G	S70 E09 716	TERMINAL BLOCK	5P (L1,L2,L3,N,⊕)	1	1	1	1		TB1	
26	G	S70 E43 316	CONTROL BOX ASSY		1						
	G	S70 E44 316	CONTROL BOX ASSY			1					
	G	S70 E46 316	CONTROL BOX ASSY				1				
	G	S70 E47 316	CONTROL BOX ASSY					1			
27	G	S70 K50 259	REACTOR		1	1	1	1		DCL	
28	G	S70 0B7 313	POWER CIRCUIT BOARD		1	1				P.B.	
	G	S70 0B8 313	POWER CIRCUIT BOARD				1	1		P.B.	
29	G	S70 E61 255	MAIN SMOOTHING CAPACITOR		2	2	2	2		CB1,2	
30	G	S70 0B7 315	CONTROLLER CIRCUIT BOARD		1	1				C.B.	
	G	S70 0B8 315	CONTROLLER CIRCUIT BOARD				1	1		C.B.	
31	G	S70 E30 346	NOISE FILTER CIRCUIT BOARD		1	1	1	1		N.F.	
32	G	S70 E37 202	THERMISTOR (OUTDOOR PIPE)		1	1	1	1		TH3	
33	G	S70 E46 202	THERMISTOR (COMP.SHELL)		1	1	1	1		TH32	

**STRUCTURAL PARTS**  
**PUHZ-P100VHA2.UK**  
**PUHZ-P100VHA3.UK**



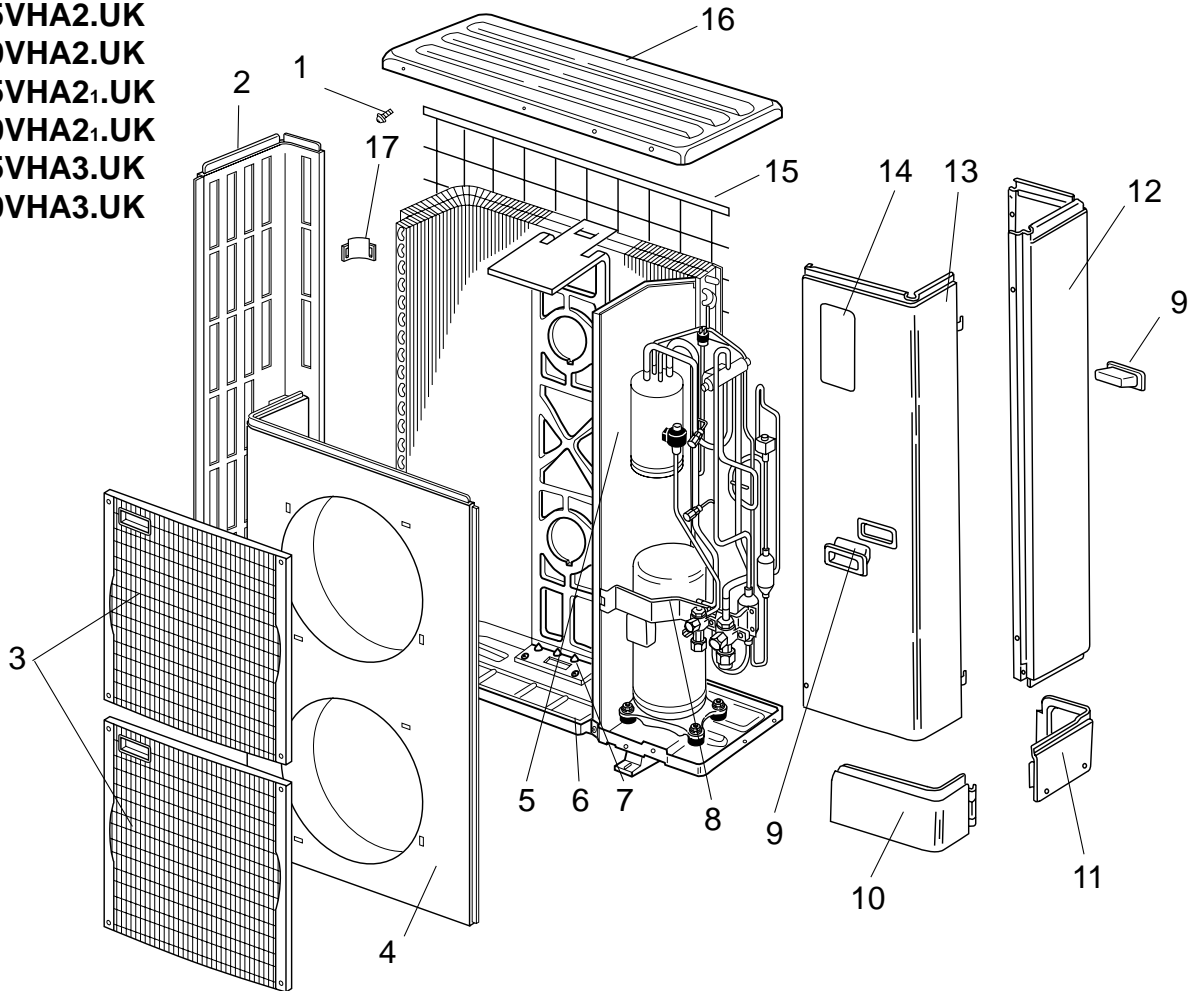
No.	RoHS	Part No.	Part Name	Specification	Q'ty/set		Remarks (Drawing No.)	Wiring Diagram Symbol	Recom- mended Q'ty
					PUHZ-P				
					100				
					VHA2.UK	VHA3.UK			
1	G	—	F.ST SCREW	(5×10)	31	31	(DG12F536H10)		
2	G	S70 E10 662	SIDE PANEL (L)		1	1			
3	G	S70 E20 675	FAN GRILLE		1	1			
4	G	S70 E10 668	FRONT PANEL		1	1			
5	G	—	SEPARATOR		1	1	(BK00C456G03)		
6	G	S70 E10 686	BASE ASSY		1	1			
7	G	S70 E10 130	MOTOR SUPPORT		1	1			
8	G	—	VALVE BED ASSY		1	1	(BK00C493G01)		
9	G	S70 30L 655	HANDLE		2	2			
10	G	S70 E10 658	COVER PANEL (FRONT)		1	1			
11	G	S70 E20 658	COVER PANEL (REAR)		1	1			
12	G	S70 E60 662	SIDE PANEL (R)		1	1			
13	G	S70 E30 661	SERVICE PANEL		1	1			
14	G	S70 E10 699	LABEL		1	1			
15	G	S70 E10 698	REAR GUARD		1	1			
16	G	S70 E10 641	TOP PANEL		1	1			
17	G	S70 E10 655	HANDLE		1	1			

**STRUCTURAL PARTS**  
**PUHZ-P100VHA3R1.UK**  
**PUHZ-P100VHA3R2.UK**  
**PUHZ-P100YHA.UK**  
**PUHZ-P100YHAR1.UK**



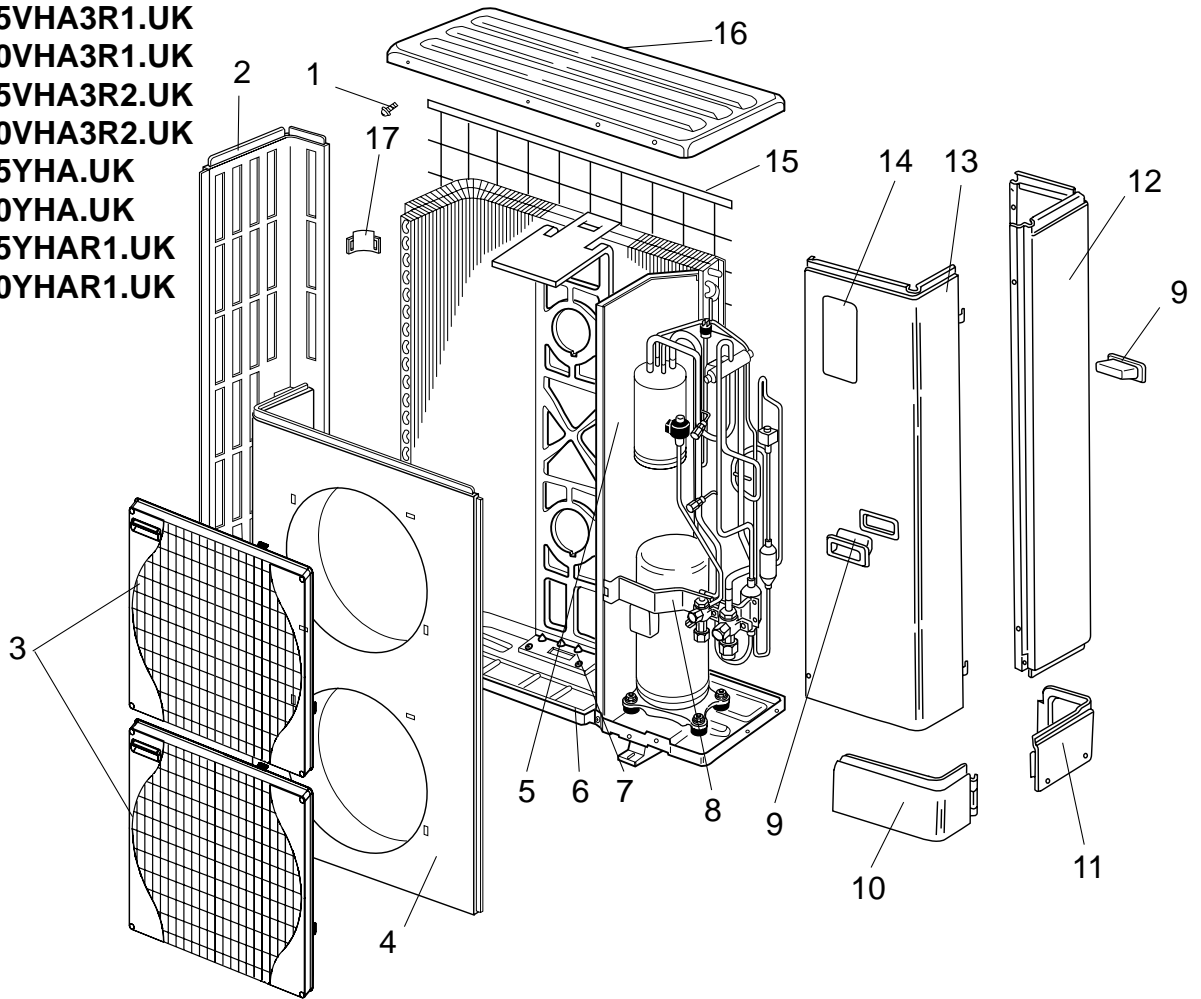
No.	RoHS	Part No.	Part Name	Specification	Q'ty/set			Remarks (Drawing No.)	Wiring Diagram Symbol	Recom- mended Q'ty
					PUHZ-P100					
					VHA3 R1.UK	R2.UK	YHA.UK YHAR1.UK			
1	G	—	F.ST SCREW	(5×10)	31	31	31	(DG12F536H10)		
2	G	S70 E11 662	SIDE PANEL (L)		1	1	1			
3	G	S70 E30 675	FAN GRILLE		1	1	1			
4	G	S70 E30 668	FRONT PANEL		1	1	1			
5	G	—	SEAPARATOR		1	1		(BK00C456G29)		
	G	—	SEAPARATOR				1	(BK00C456G30)		
6	G	S70 E11 686	BASE ASSY		1	1	1			
7	G	S70 E10 130	MOTOR SUPPORT		1	1	1			
8	G	S71 0VB 001	VALVE BED ASSY		1	1	1			
9	G	S70 30L 655	HANDLE		2	2	2			
10	G	S70 E30 658	COVER PANEL (FRONT)		1	1	1			
11	G	S70 E40 658	COVER PANEL (REAR)		1	1	1			
13	G	S70 E50 661	SERVICE PANEL		1					
	G	S70 E80 661	SERVICE PANEL			1	1			
14	G	S70 E10 699	LABEL		1	1	1			
15	G	S70 E10 698	REAR GUARD		1	1	1			
16	G	S70 E20 641	TOP PANEL		1	1	1			
17	G	S70 E10 655	HANDLE		1	1	1			

**STRUCTURAL PARTS**  
**PUHZ-P125VHA2.UK**  
**PUHZ-P140VHA2.UK**  
**PUHZ-P125VHA2<sub>1</sub>.UK**  
**PUHZ-P140VHA2<sub>1</sub>.UK**  
**PUHZ-P125VHA3.UK**  
**PUHZ-P140VHA3.UK**



No.	RoHS	Part No.	Part Name	Specification	Q'ty/set		Remarks (Drawing No.)	Wiring Diagram Symbol	Recom- mended Q'ty	
					PUHZ-P					
					125, 140					
					VHA2 <sub>(1)</sub> .UK	VHA3.UK				
1	G	—	F.ST SCREW	(5×10)	46	46	(DG12F536H10)			
2	G	S70 E20 662	SIDE PANEL (L)		1	1				
3	G	S70 E20 675	FAN GRILLE		2	2				
4	G	S70 E20 668	FRONT PANEL		1	1				
5	G	—	SEPARATOR		1	1	(BK00C456G06)			
6	G	S70 E10 686	BASE ASSY		1	1				
7	G	S70 E20 130	MOTOR SUPPORT		1	1				
8	G	—	VALVE BED ASSY		1	1	(BK00C493G01)			
9	G	S70 30L 655	HANDLE		2	2				
10	G	S70 E10 658	COVER PANEL (FRONT)		1	1				
11	G	S70 E20 658	COVER PANEL (REAR)		1	1				
12	G	S70 E50 662	SIDE PANEL (R)		1	1				
13	G	S70 E40 661	SERVICE PANEL		1	1				
14	G	S70 E10 699	LABEL		1	1				
15	G	S70 E20 698	REAR GUARD		2	2				
16	G	S70 E10 641	TOP PANEL		1	1				
17	G	S70 E10 655	HANDLE		1	1				

**STRUCTURAL PARTS**  
**PUHZ-P125VHA3R1.UK**  
**PUHZ-P140VHA3R1.UK**  
**PUHZ-P125VHA3R2.UK**  
**PUHZ-P140VHA3R2.UK**  
**PUHZ-P125YHA.UK**  
**PUHZ-P140YHA.UK**  
**PUHZ-P125YHAR1.UK**  
**PUHZ-P140YHAR1.UK**



No.	RoHS	Part No.	Part Name	Specification	Q'ty/set		Remarks (Drawing No.)	Wiring Diagram Symbol	Recom- mended Q'ty
					PUHZ-P125,140				
					VHA3R1.UK VHA3R2.UK YHAR.UK	YHAR1.UK			
1	G	—	F.ST SCREW	(5x10)	46	46	(DG12F536H10)		
2	G	S70 E21 662	SIDE PANEL (L)		1	1			
3	G	S70 E30 675	FAN GRILLE		2	2			
4	G	S70 E40 668	FRONT PANEL		1	1			
5	G	—	SEAPARATOR		1		(BK00C456G28)		
	G	—	SEAPARATOR			1	(BK00C456G33)		
6	G	S70 E11 686	BASE ASSY		1	1			
7	G	S70 E20 130	MOTOR SUPPORT		1	1			
8	G	S71 0VB 001	VALVE BED ASSY		1	1			
9	G	S70 30L 655	HANDLE		2	2			
10	G	S70 E30 658	COVER PANEL (FRONT)		1	1			
11	G	S70 E40 658	COVER PANEL (REAR)		1	1			
12	G	S70 E61 662	SIDE PANEL (R)		1	1			
13	G	S70 E60 661	SERVICE PANEL		1	1			
14	G	S70 E10 699	LABEL		1	1			
15	G	S70 E20 698	REAR GUARD		2	2			
16	G	S70 E20 641	TOP PANEL		1	1			
17	G	S70 E10 655	HANDLE		1	1			

Mr. SLIM™

 **mitsubishi electric corporation**

HEAD OFFICE : TOKYO BLDG., 2-7-3, MARUNOUCHI, CHIYODA-KU, TOKYO 100-8310, JAPAN

©Copyright 2007 MITSUBISHI ELECTRIC ENGINEERING CO., LTD.  
Distributed in Apr. 2010 No.OCH415 REVISED EDITION-E PDF 4  
Distributed in Nov. 2009 No.OCB415 REVISED EDITION-D PDF 6  
Distributed in Jul. 2009 No.OCB415 REVISED EDITION-C PDF 6  
Distributed in Mar. 2009 No.OCB415 REVISED EDITION-B PDF 6  
Distributed in Feb. 2008 No.OCB415 REVISED EDITION-A PDF 7  
Distributed in Apr. 2007 No.OCB415 PDF 7  
Made in Japan

New publication, effective Apr. 2010  
Specifications subject to change without notice