

# Air Conditioning

## Product Information

**PLA-SP R410A**  
**Inverter Heat Pump**  
4-Way Blow Ceiling Cassette System

Making a  
World of  
Difference

Mr.SUM.



The **PLA-SP Inverter** range offers customers all the features and benefits of inverter technology whilst being cost effective.

### Key Features

- Inverter cassette range only
- Single combination only
- Up to 40m pipe run
- Cost effective with the benefits and features of inverter technology
- Filter lowering operation down to 4m (optional PLP-6BAJ grille required)



Cooling | Heating | Ventilation | Controls

# Air Conditioning

## Product Information

### PLA-SP R410A Inverter Heat Pump 4-Way Blow Ceiling Cassette System

Making a  
World of  
Difference



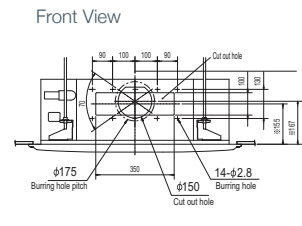
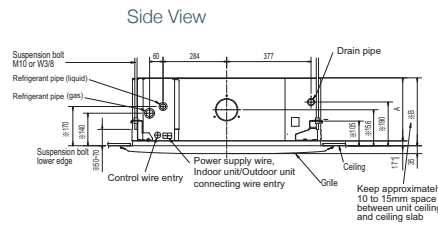
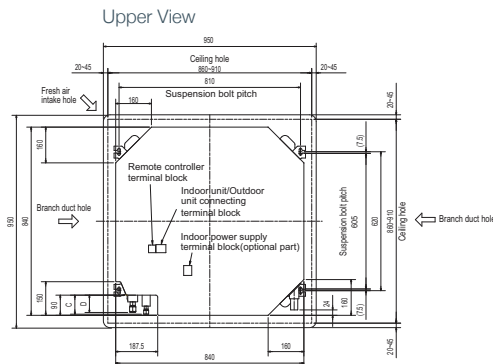
PLA-SP INDOOR UNITS		PLA-SP71BA	PLA-SP100BA	PLA-SP100BA	PLA-SP125BA	PLA-SP125BA	PLA-SP140BA	PLA-SP140BA
CAPACITY (kW)	Heating (nominal)	8.0 (2.6-8.9)	11.2 (4.5-11.5)	11.2 (4.5-11.5)	13.5 (5.0-15.0)	13.5 (5.0-15.0)	15.5 (5.0-17.0)	15.5 (5.0-17.0)
	Cooling (nominal)	7.1 (2.8-8.1)	9.4 (4.9-9.9)	9.4 (4.9-9.9)	12.3 (5.5-13.0)	12.3 (5.5-13.0)	13.0 (5.5-14.0)	13.0 (5.5-14.0)
	Heating (UK)	6.8 (2.2-7.6)	9.5 (3.8-9.8)	9.5 (3.8-9.8)	11.5 (4.3-12.8)	11.5 (4.3-12.8)	13.2 (4.3-14.5)	13.2 (4.3-14.5)
	Cooling (UK)	6.5 (2.6-7.5)	8.6 (4.5-9.1)	8.6 (4.5-9.1)	11.3 (5.1-12.0)	11.3 (5.1-12.0)	12.0 (5.1-12.9)	12.0 (5.1-12.9)
SHF (nominal)		0.73	0.74	0.74	0.71	0.71	0.71	0.71
COP / EER (nominal)		3.21 / 3.21	3.21 / 3.01	3.21 / 3.01	3.41 / 3.01	3.41 / 3.01	3.21 / 2.61	3.21 / 2.61
SCOP / SEER (BS EN14825)		3.8 / 5.6	3.8 / 5.1	3.8 / 5.1	N/A	N/A	N/A	N/A
ErP ENERGY EFFICIENCY CLASS Heating/Cooling		A / A+	A / A	A / A	N/A	N/A	N/A	N/A
AIRFLOW (l/s)	Lo-Mi1-Mi2-Hi	233-267-300-350	333-383-433-500	333-383-433-500	367-417-467-517	367-417-467-517	400-433-483-533	400-433-483-533
PIPE SIZE mm (in)	Gas/Liquid	15.88 (5/8") / 9.52 (3/8")	15.88 (5/8") / 9.52 (3/8")	15.88 (5/8") / 9.52 (3/8")	15.88 (5/8") / 9.52 (3/8")	15.88 (5/8") / 9.52 (3/8")	15.88 (5/8") / 9.52 (3/8")	15.88 (5/8") / 9.52 (3/8")
SOUND PRESSURE LEVEL (dBA)	Lo-Mi1-Mi2-Hi	28-30-32-34	32-34-37-40	32-34-37-40	34-36-39-41	34-36-39-41	36-39-42-44	36-39-42-44
SOUND POWER LEVEL (dBA)		56	62	62	63	63	70	70
DIMENSIONS (mm)	Width x Depth x Height (Grille)	840 (850) x 840 (850) x 298 (305)	840 (850) x 840 (850) x 298 (305)	840 (850) x 840 (850) x 298 (305)	840 (850) x 840 (850) x 298 (305)	840 (850) x 840 (850) x 298 (305)	840 (850) x 840 (850) x 298 (305)	840 (850) x 840 (850) x 298 (305)
WEIGHT (kg)	Unit / Panel	23 / 6	25 / 6	25 / 6	25 / 6	25 / 6	27 / 6	27 / 6
ELECTRICAL SUPPLY		Fed by Outdoor Unit	Fed by Outdoor Unit	Fed by Outdoor Unit	Fed by Outdoor Unit	Fed by Outdoor Unit	Fed by Outdoor Unit	Fed by Outdoor Unit
FUSE RATING (BS88) - HRC (A)		6	6	6	6	6	6	6
INTERCONNECTING CABLE No. Cores		4	4	4	4	4	4	4
GRILLE REFERENCE		PLP-6BA	PLP-6BA	PLP-6BA	PLP-6BA	PLP-6BA	PLP-6BA	PLP-6BA
WIRED REMOTE CONTROLLER REFERENCE		PAR-33MAA	PAR-33MAA	PAR-33MAA	PAR-33MAA	PAR-33MAA	PAR-33MAA	PAR-33MAA
WIRELESS REMOTE CONTROLLER REFERENCE		PAR-SL97A	PAR-SL97A	PAR-SL97A	PAR-SL97A	PAR-SL97A	PAR-SL97A	PAR-SL97A

SUZ-SA / PUHZ-SP OUTDOOR UNITS		SUZ-SA71VA	PUHZ-SP100VHA	PUHZ-SP100YHA <sup>(3)</sup>	PUHZ-SP125VHA	PUHZ-SP125YHA <sup>(3)</sup>	PUHZ-SP140VHA	PUHZ-SP140YHA <sup>(3)</sup>
SOUND PRESSURE LEVEL (dBA)	Heating/Cooling	55 / 55	54 / 50	54 / 50	55 / 51	55 / 51	56 / 52	56 / 52
	Cooling	69	70	70	71	71	73	73
SOUND POWER LEVEL (dBA)		53	75	77	99	101	99	101
WEIGHT (kg)								
DIMENSIONS (mm)	Width x Depth x Height	840 x 330 x 880	950 x 330 x 943	950 x 330 x 943	950 x 330 x 1350	950 x 330 x 1350	950 x 330 x 1350	950 x 330 x 1350
ELECTRICAL SUPPLY		220-240v, 50Hz	220-240v, 50Hz	380-415v, 50Hz	220-240v, 50Hz	380-415v, 50Hz	220-240v, 50Hz	380-415v, 50Hz
PHASE		Single	Single	Three	Single	Three	Single	Three
SYSTEM POWER INPUT (kW)	Heating/Cooling (nominal)	2.25 / 2.10	3.28 / 3.12	3.28 / 3.12	4.11 / 4.09	4.11 / 4.09	4.98 / 5.21	4.98 / 5.21
	Heating/Cooling (UK)	2.00 / 1.79	2.92 / 2.65	2.92 / 2.65	3.66 / 3.48	3.66 / 3.48	4.43 / 4.43	4.43 / 4.43
STARTING CURRENT (A)		9.7	12.0	4.0	15.0	5.0	15.0	5.0
SYSTEM RUNNING CURRENT (A)	Heating/Cooling [MAX]	9.38 / 9.36 [16.6]	15.89 / 14.3 [28.9]	6.24 / 5.72 [13.9]	17.89 / 18.48 [29.0]	6.93 / 7.18 [14.0]	21.81 / 22.72 [30.5]	8.36 / 8.65 [14.0]
FUSE RATING (BS88) - HRC (A)		20	32	16	32	16	40	16
MAINS CABLE No. Cores		3	3	5	3	5	3	5
MAX PIPE LENGTH (m)		30	30	30	40	40	40	40
MAX HEIGHT DIFFERENCE (m)		30	30	30	30	30	30	30
CHARGE REFRIGERANT (kg) / CO <sub>2</sub> EQUIVALENT (t)		1.90 / 3.97 (7m)	3.00 / 6.26 (20m)	3.00 / 6.26 (20m)	4.50 / 9.40 (30m)	4.50 / 9.40 (30m)	4.50 / 9.40 (30m)	4.50 / 9.40 (30m)
MAX ADDITIONAL REFRIGERANT (kg) / CO <sub>2</sub> EQUIVALENT (t)		1.15 / 2.40	0.60 / 1.25	0.60 / 1.25	0.60 / 1.25	0.60 / 1.25	0.60 / 1.25	0.60 / 1.25

<sup>(3)</sup> Three Phase

### PRODUCT DIMENSIONS

#### PLA-SP71/10/125/140BA



Models	A	B	C	D	E
PLA-SP71BA					
PLA-SP100BA	281	298	85	77	440
PLA-SP125BA					
PLA-SP140BA					



Telephone: 01707 282880  
email: [air.conditioning@meuk.mee.com](mailto:air.conditioning@meuk.mee.com)  
web: [airconditioning.mitsubishielectric.co.uk](http://airconditioning.mitsubishielectric.co.uk)

UNITED KINGDOM Mitsubishi Electric Europe Living Environment Systems Division  
Travellers Lane, Hatfield, Hertfordshire, AL10 8XB, England General Enquiries Telephone: 01707 282880 Fax: 01707 278881

IRELAND Mitsubishi Electric Europe Westgate Business Park, Ballymount, Dublin 24, Ireland  
Telephone: Dublin (01) 419 8800 Fax: Dublin (01) 419 8890 International code: (003531)

Country of origin: United Kingdom - Japan - Thailand - Malaysia. ©Mitsubishi Electric Europe 2017. Mitsubishi and Mitsubishi Electric are trademarks of Mitsubishi Electric Europe B.V. The company reserves the right to make any variation in technical specification to the equipment described, or to withdraw or replace products without prior notification or public announcement. Mitsubishi Electric is constantly developing and improving its products. All descriptions, illustrations, drawings and specifications in this publication present only general particulars and shall not form part of any contract. All goods are supplied subject to the Company's General Conditions of Sale, a copy of which is available on request. Third-party product and brand names may be trademarks or registered trademarks of their respective owners.

**Note:** The fuse rating is for guidance only. Please refer to the relevant databook for detailed specification. It is the responsibility of a qualified electrician/electrical engineer to select the correct cable size and fuse rating based on current regulation and site specific conditions. Mitsubishi Electric's air conditioning equipment and heat pump systems contain a fluorinated greenhouse gas, R410A (GWP:2088), R32 (GWP:675), R407C (GWP:1774) or R134a (GWP:1430). \*These GWP values are based on Regulation (EU) No 517/2014 from IPCC 4th edition. In case of Regulation (EU) No.626/2011 from IPCC 3rd edition, these are as follows: R410A (GWP:1975), R32 (GWP: 550), R407C (GWP:1650) or R134a (GWP:1300).



[www.greengateway.mitsubishielectric.co.uk](http://www.greengateway.mitsubishielectric.co.uk)  
Mitsubishi Electric UK's commitment to the environment

Follow us @meuk\_Jes  
Follow us @green\_gateway

Mitsubishi Electric  
Living Environment Systems UK

[mitsubishielectric2](https://www.youtube.com/channel/UCm8b1v1v1v1v1v1v1v1v1v1)

[thehub.mitsubishielectric.co.uk](http://thehub.mitsubishielectric.co.uk)

Effective as of September 2017