

Air Conditioning

Product Information

PLA-RP R410A 4-Way Blow Ceiling Cassette System

Standard Inverter Heat Pump (Three Phase)

Making a
World of
Difference

Mr.SUM.



The **PLA-RP Standard Inverter** range is a ceiling cassette system that blends a host of outstanding features with a sophisticated streamlined design. Offering advanced control options and quiet operation, this range provides extreme flexibility and ease of installation whilst being cost effective.

Key Features

- Improved airflow control, including horizontal airflow for greater comfort
- Optional 3D i-see sensor grille (PLP-6EAE) provides customised comfort by automatically monitoring room occupancy, position and body temperatures
- Optional filter lowering operation down to 4m (PLP-6EAJ)
- Replace Technology available
- New single fan chassis on 12.5 and 14kW models



Cooling | Heating | Ventilation | Controls

Air Conditioning

Product Information

PLA-RP R410A 4-Way Blow Ceiling Cassette System

Standard Inverter Heat Pump (Three Phase)

Making a World of Difference



PLA-RP - INDOOR UNITS		PLA-RP100EA	PLA-RP125EA	PLA-RP140EA
CAPACITY (kW)	Heating (nominal)	11.2 (2.8-12.5)	13.5 (4.8-15.0)	15.0 (4.9-15.8)
	Cooling (nominal)	9.4 (3.7-10.6)	12.1 (5.6-13.0)	13.6 (5.8-14.1)
	Heating (UK)	9.63 (2.41-10.75)	11.61 (4.13-12.9)	12.9 (4.21-13.59)
	Cooling (UK)	8.55 (3.37-9.65)	11.01 (5.1-11.83)	12.38 (5.28-12.83)
SHF (nominal)		0.77	0.73	0.70
COP / EER (nominal)		3.43 / 2.95	3.51 / 2.95	3.21 / 2.51
SCOP (nsh) / SEER (nsc) (BS EN14825)		4.60 / 6.10	4.01 (160.2%) / 5.76 (230.3%)	4.00 (160.1%) / 5.76 (230.2%)
ErP ENERGY EFFICIENCY CLASS	Heating/Cooling	A++ / A++	N/A	N/A
AIRFLOW (l/s)	Lo-Mi-Mi2-Hi	317-383-433-483	350-417-467-517	400-433-483-533
PIPE SIZE mm (in)	Gas/Liquid	15.88 (5/8") / 9.52 (3/8")	15.88 (5/8") / 9.52 (3/8")	15.88 (5/8") / 9.52 (3/8")
SOUND PRESSURE LEVEL (dBA)	Lo-Mi-Mi2-Hi	31-34-37-40	33-37-41-44	36-39-42-44
SOUND POWER LEVEL (dBA)		61	65	65
DIMENSIONS (mm)	Width x Depth x Height (Grille)	840 (950) x 840 (950) x 298 (40)	840 (950) x 840 (950) x 298 (40)	840 (950) x 840 (950) x 298 (40)
WEIGHT (kg)	Unit / Panel	24 / 5	26 / 5	26 / 5
ELECTRICAL SUPPLY		Fed by Outdoor Unit	Fed by Outdoor Unit	Fed by Outdoor Unit
FUSE RATING (BS88) - HRC (A)		6	6	6
INTERCONNECTING CABLE No. Cores		4	4	4
GRILLE REFERENCE		PLP-6EA	PLP-6EA	PLP-6EA
WIRED REMOTE CONTROLLER REFERENCE		PAR-33MAA	PAR-33MAA	PAR-33MAA
WIRELESS REMOTE CONTROLLER REFERENCE		PAR-SL100A-E	PAR-SL100A-E	PAR-SL100A-E

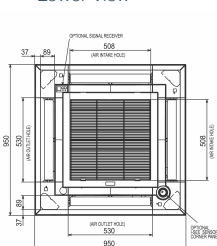
PUHZ-P - OUTDOOR UNITS		PUHZ-P100YKA ^③	PUHZ-P125YKA ^③	PUHZ-P140YKA ^③
SOUND PRESSURE LEVEL (dBA)	Heating/Cooling	54 / 51	56 / 54	57 / 56
	Cooling	70	72	75
SOUND POWER LEVEL (dBA)	Cooling	78	85	85
WEIGHT (kg)		78	85	85
DIMENSIONS (mm)	Width x Depth x Height	1050 x 330 x 981	1050 x 330 x 981	1050 x 330 x 981
ELECTRICAL SUPPLY		380-415v, 50Hz	380-415v, 50Hz	380-415v, 50Hz
PHASE		Three	Three	Three
SYSTEM POWER	Heating/Cooling (nominal)	3.26 / 3.18	3.84 / 4.10	4.67 / 5.42
INPUT (kW)	Heating/Cooling (UK)	2.93 / 2.64	3.46 / 3.40	4.20 / 4.50
STARTING CURRENT (A)		2.9	4.0	4.0
SYSTEM RUNNING CURRENT (A)	Heating/Cooling [MAX]	5.3 / 5.3 [11.5]	6.8 / 6.4 [11.5]	8.9 / 7.9 [11.5]
FUSE RATING (BS88) - HRC (A)		16	16	16
MAINS CABLE No. Cores		5	5	5
MAX PIPE LENGTH (m)		50	50	50
MAX HEIGHT DIFFERENCE (m)		30	30	30
CHARGE REFRIGERANT (kg) / CO ₂ EQUIVALENT (t)		3.30 / 6.89	3.80 / 7.93	3.80 / 7.93
R410A (GWP 2088) - 30m				
MAX ADDITIONAL REFRIGERANT (kg) / CO ₂ EQUIVALENT (t)		1.20 / 2.51	1.20 / 2.51	1.20 / 2.51
R410A (GWP 2088)				

^③ Three Phase

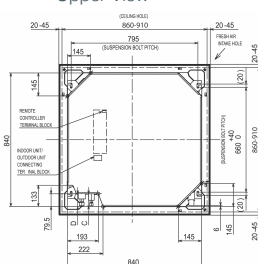
PRODUCT DIMENSIONS

PLA-RP100/125/140EA

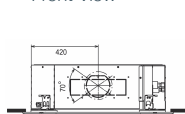
Lower View



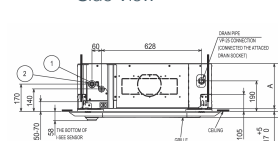
Upper View



Front View



Side View



PLA-RP100/125/140

RP	①	②	A	B	C	D
100-140	REFRIGERANT PIPE Ø 9.52 FLARED CONNECTION SIF	REFRIGERANT PIPE Ø 15.88 FLARED CONNECTION SIF	281	298	79.5	79.5



Telephone: 01707 282880

email: air.conditioning@meuk.mee.com

web: airconditioning.mitsubishielectric.co.uk

UNITED KINGDOM Mitsubishi Electric Europe Living Environment Systems Division

Travellers Lane, Hatfield, Hertfordshire, AL10 8XB, England General Enquiries Telephone: 01707 282880 Fax: 01707 278881

IRELAND Mitsubishi Electric Europe Westgate Business Park, Ballymount, Dublin 24, Ireland

Telephone: Dublin (01) 419 8800 Fax: Dublin (01) 419 8890 International code: (003531)

Country of origin: United Kingdom – Japan – Thailand – Malaysia. ©Mitsubishi Electric Europe 2018. Mitsubishi and Mitsubishi Electric are trademarks of Mitsubishi Electric Europe B.V. The company reserves the right to make any variation in technical specification to the equipment described, or to withdraw or replace products without prior notification or public announcement. Mitsubishi Electric is constantly developing and improving its products. All descriptions, illustrations, drawings and specifications in this publication present only general particulars and shall not form part of any contract. All goods are supplied subject to the Company's General Conditions of Sale, a copy of which is available on request. Third-party product and brand names may be trademarks or registered trademarks of their respective owners.

Note: The fuse rating is for guidance only. Please refer to the relevant databook for detailed specification. It is the responsibility of a qualified electrician/electrical engineer to select the correct cable size and fuse rating based on current regulation and site specific conditions. Mitsubishi Electric's air conditioning equipment and heat pump systems contain a fluorinated greenhouse gas, R410A (GWP:2088), R32 (GWP:675), R407C (GWP:1774) or R134a (GWP:1430). *These GWP values are based on Regulation (EU) No 517/2014 from IPCC 4th edition. In case of Regulation (EU) No.626/2011 from IPCC 3rd edition, these are as follows: R410A (GWP:1975), R32 (GWP: 550), R407C (GWP:1650) or R134a (GWP:1300).



www.greengateway.mitsubishielectric.co.uk

Mitsubishi Electric UK's commitment to the environment

Follow us @meuk_Jes
Follow us @green_gateway

Mitsubishi Electric
Living Environmental Systems UK

mitsubishielectric2

thehub.mitsubishielectric.co.uk

Effective as of January 2018