

# Air Conditioning

## Product Information

**PLA-SP71BA** (Single Phase)  
**Inverter Heat Pump**  
4-Way Blow Ceiling Cassette System

Making a  
World of  
Difference

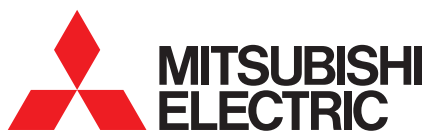
Mr.SLIM™



Our Inverter range offers customers all the features and benefits of inverter technology whilst being cost effective.

### Key Features

- Inverter cassette range only
- Single combination only
- Up to 40m pipe run
- Cost effective with the benefits and features of inverter technology
- Filter lowering operation down to 4m (optional PLP-6BAJ grille required)



Air Conditioning | Heating  
Ventilation | Controls



# Air Conditioning

## Product Information

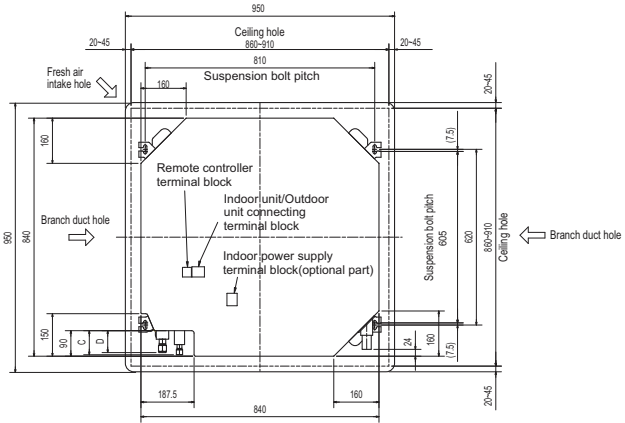
**PLA-SP71BA** (Single Phase)  
**Inverter Heat Pump**  
 4-Way Blow Ceiling Cassette System

Making a  
 World of  
 Difference

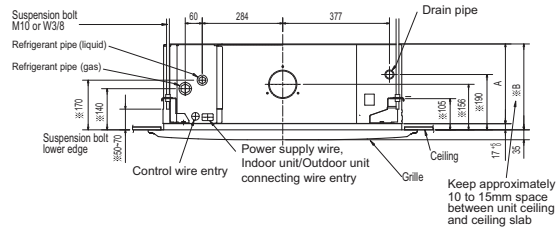
PLA-SP - INDOOR UNITS		PLA-SP71BA
CAPACITY (kW)	Heating (nominal)	8.0 (2.6-8.9)
	Cooling (nominal)	7.1 (2.8-8.1)
	Heating (UK)	6.8 (2.2-7.6)
	Cooling (UK)	6.5 (2.6-7.5)
SHF (nominal & UK)		0.73
COP / EER (nominal)		3.21 / 3.21
SCOP / SEER (BS EN14825)		3.8 / 5.6
EP ENERGY EFFICIENCY CLASS	Heating/Cooling	A / A+
AIRFLOW (l/s)	Lo-Mi-Mi2-Hi	233-267-300-350
PIPE SIZE mm (in)	Gas/Liquid	15.88 (5/8") / 9.52 (3/8")
SOUND PRESSURE LEVEL (dBA)	Lo-Mi-Mi2-Hi	28-30-32-34
SOUND POWER LEVEL (dBA)		56
DIMENSIONS (mm)	Width x Depth x Height (Grille)	840 (950) x 840 (950) x 258 (35)
WEIGHT (kg)	Unit / Panel	23 / 6
ELECTRICAL SUPPLY		Fed by Outdoor Unit
FUSE RATING (BS88) - HRC (A)		6
INTERCONNECTING CABLE No. Cores		4
GRILLE REFERENCE		PLP-6BA
WIRED REMOTE CONTROLLER REFERENCE		PAR-31MAA

## DIMENSIONS

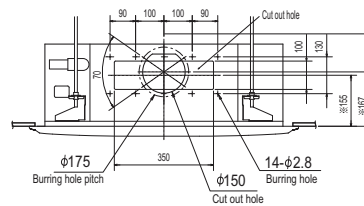
Upper View



Side View



Front View



Model	A	B	C	D	E
PLA-SP71BA	281	298	85	77	440



SUZ-SA - OUTDOOR UNITS		SUZ-SA71VA
SOUND PRESSURE LEVEL (dBA)	Heating/Cooling	55 / 55
SOUND POWER LEVEL (dBA)	Cooling	69
WEIGHT (kg)		53
DIMENSIONS (mm)	Width x Depth x Height	840 x 330 x 880
ELECTRICAL SUPPLY		220-240v, 50Hz
PHASE		Single
SYSTEM POWER	Heating/Cooling (nominal)	2.25 / 2.10
INPUT (kW)	Heating/Cooling (UK)	2.00 / 1.79
STARTING CURRENT (A)		9.7
SYSTEM RUNNING CURRENT (A)	Heating/Cooling [MAX]	9.38 / 9.36 [16.6]
FUSE RATING (BS88) - HRC (A)		20
MAINS CABLE No. Cores		3
MAX PIPE LENGTH (m)		30
MAX HEIGHT DIFFERENCE (m)		30
CHARGE R410A (kg)		1.9



Telephone: 01707 282880

email: [air.conditioning@meuk.mee.com](mailto:air.conditioning@meuk.mee.com) web: [www.airconditioning.mitsubishielectric.co.uk](http://www.airconditioning.mitsubishielectric.co.uk)

UNITED KINGDOM Mitsubishi Electric Europe Living Environmental Systems Division  
 Travellers Lane, Hatfield, Hertfordshire, AL10 8XB, England General Enquiries Telephone: 01707 282880 Fax: 01707 278881

IRELAND Mitsubishi Electric Europe Westgate Business Park, Ballymount, Dublin 24, Ireland  
 Telephone: Dublin (01) 419 8800 Fax: Dublin (01) 419 8890 International code: (003531)

Country of origin: United Kingdom - Japan - Thailand - Malaysia. ©Mitsubishi Electric Europe 2015. Mitsubishi and Mitsubishi Electric are trademarks of Mitsubishi Electric Europe B.V. The company reserves the right to make any variation in technical specification to the equipment described, or to withdraw or replace products without prior notification or public announcement. Mitsubishi Electric is constantly developing and improving its products. All descriptions, illustrations, drawings and specifications in this publication present only general particulars and shall not form part of any contract. All goods are supplied subject to the Company's General Conditions of Sale, a copy of which is available on request. Third-party product and brand names may be trademarks or registered trademarks of their respective owners.



**Note:** The fuse rating is for guidance only. Please refer to the relevant databook for detailed specification. It is the responsibility of a qualified electrician/electrical engineer to select the correct cable size and fuse rating based on current regulation and site specific conditions. Mitsubishi Electric's air conditioning and heat pump systems contain fluorinated greenhouse gases R410A, R407C and R134a.



[www.greengateway.mitsubishielectric.co.uk](http://www.greengateway.mitsubishielectric.co.uk)

Mitsubishi Electric UK's commitment to the environment



Follow us @meuk\_Jes  
 Follow us @green\_gateway



Mitsubishi Electric  
 Living Environmental Systems UK



mitsubishielectric2

Effective as of April 2015