



PLA-RP35BA

Power Inverter Heat Pump

R410A 4-Way Blow Ceiling Cassette System

Advanced inverter technology makes the Mr Slim Power Inverter the number one choice for improving comfort. They provide energy savings of up to 70% annually when compared to a previous non-inverter model. Operating noise has also been reduced thanks to improvements in fan design, while existing pipe work is reusable for easier maintenance and installation.

- **Airflow controllable for ceiling heights up to 4.2m, with automatic adjustment of fan speed**
- **Reduced draft air distribution, with independent vane control**
- **Filter lowering operation down to 4m (optional PLP-6BAJ grille required)**
- **Optional 'I See Sensor' for energy saving and smooth temperature control throughout the room**



Pictures not to scale

Product Details

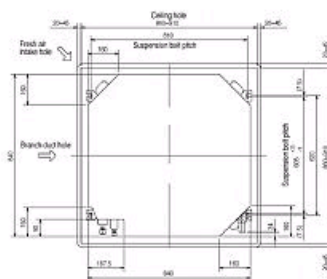
PLA-RP35BA Indoor Unit	
Capacity (kW):	
Heating (Nominal) (Low - High)	4.10 (1.60 - 5.20)
Cooling (Nominal) (Low - High)	3.60 (1.60 - 4.50)
Heating (UK) (Low - High)	3.50 (1.35 - 4.40)
Cooling (UK) (Low - High)	3.30 (1.45 - 4.15)
SHF R410A (Nominal)	0.84
COP / EER (Nominal)	3.66 / 3.36
Energy Label Heating / Cooling	A / A
Width - mm	840 (950)
Depth - mm	840 (950)
Height - mm	258 (35)
Weight - kg	22 (6)
Airflow (m3/min) - Lo-Mi1-Mi2-Hi	11-12-13-15
Noise (dBA) - Lo-Mi1-Mi2-Hi	27-28-29-31
Electrical Supply	Fed by Outdoor Unit
Phase	Single
Fuse Rating (BS88) - HRC (A)	6
Interconnecting Cable No. Cores	4

PUHZ-RP35VHA4 Outdoor Unit	
Width - mm	800
Depth - mm	300 + 23
Height - mm	600
Weight - kg	42
Noise (dBA) (Heating /Cooling) - Lo-Hi	41-46 /41-44
Electrical Supply	220-240v, 50Hz
Phase	Single
Fuse Rating (BS88) - HRC (A)	16
SystemPower Input (kW) - Heating (Nominal)	1.12
SystemPower Input (kW) - Cooling (Nominal)	1.07
SystemPower Input (kW) - Heating (UK)	1
SystemPower Input (kW) - Cooling (UK)	0.91
Starting Current (A)	5
SystemRunning Current (A) - Heating / Cooling	5.15 / 4.98
Mains Cable No. Cores	3
Max Pipe Length (m)	50
Max Height Difference (m)	30
Charge (kg) - 30m	2.5

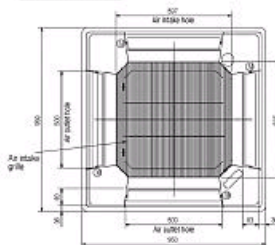
Dimensions

PLA-RP35BA

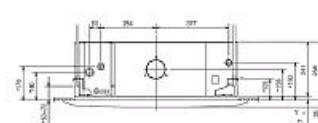
Upper View >



Front View >

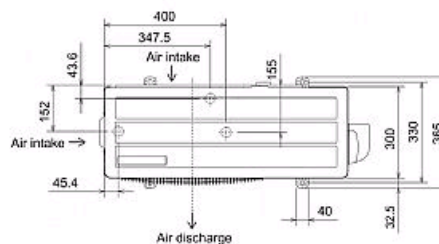


Side View >

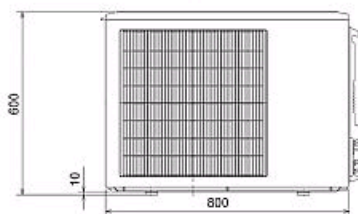


PUHZ-RP35VHA4

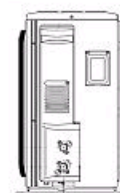
Upper View >



Front View >



Right Side View >



Telephone: 01707 282880

Email: air.conditioning@meuk.mee.com Website: <http://www.mitsubishielectric.co.uk/aircon>

Mitsubishi Electric reserves the right to make any variation in technical specification to the equipment described, or to withdraw or replace products without prior notification or public announcement.

Tel:
Fax:

