



PLA-RP71BA2

Zubadan Inverter Heat Pump

R410A 4-Way Blow Ceiling Cassette System

The new Mr Slim Zubadan Inverter heat pumps achieve an excellent heating performance even when the outdoor air temperature is as low as -25 degrees C.

- **Airflow controllable for ceiling heights up to 4.2m, with automatic adjustment of fan speed**
- **Reduced draft air distribution, with independent vane control**
- **Filter lowering operation down to 4m (optional PLP-6BAJ grille required)**
- **Optional 'I See Sensor' for energy saving and smooth temperature control throughout the room**



Pictures not to scale

Product Details

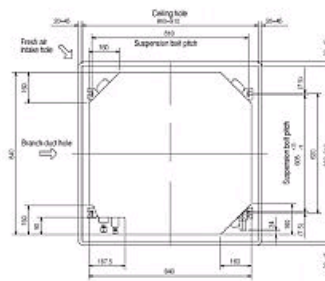
PLA-RP71BA2 Indoor Unit	
Capacity (kW):	
Heating (Nominal) (Low - High)	8.00 (4.50 - 10.20)
Cooling (Nominal) (Low - High)	7.10 (4.90 - 8.10)
Heating (UK) (Low - High)	7.92 (4.45 - 10.10)
Cooling (UK) (Low - High)	6.55 (4.50 - 7.45)
SHF R410A (Nominal)	0.73
COP / EER (Nominal)	4.21 / 3.66
Energy Label Heating / Cooling	A / A
Width (grille) - mm	840 (950)
Depth (grille) - mm	840 (950)
Height (grille) - mm	258 (35)
Weight (grille) - kg	23 (6)
Airflow (m3/min) - Lo-Mi1-Mi2-Hi	14-16-18-21
Noise (dBA) - Lo-Mi1-Mi2-Hi	28-30-32-34
Electrical Supply	Fed by Outdoor Unit
Phase	Single
Fuse Rating (BS88) - HRC (A)	6
Interconnecting Cable No. Cores	4
Grille Ref	PLP-6BA GRILLE
Remote Controller Ref	PAR-21MAA

PUHZ-HRP71VHA2 Outdoor Unit	
Width - mm	950
Depth - mm	330+30
Height - mm	1350
Weight - kg	120
Noise (dBA) (Heating /Cooling) - Lo-Hi	48-52 / 48-51
Electrical Supply	220-240v, 50Hz
Phase	Single
Fuse Rating (BS88) - HRC (A)	32
SystemPower Input (kW) - Heating (Nominal)	1.9
SystemPower Input (kW) - Cooling (Nominal)	1.94
SystemPower Input (kW) - Heating (UK)	2.76
SystemPower Input (kW) - Cooling (UK)	1.65
Starting Current (A)	14
SystemRunning Current (A) - Heating / Cooling	8.76 / 8.89
Mains Cable No. Cores	3
Max Pipe Length (m)	75
Max Height Difference (m)	30
Charge (kg) - 30m	5.5

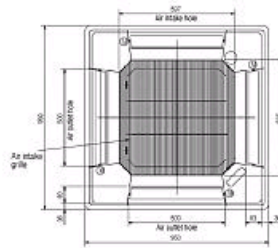
Dimensions

PLA-RP71BA2

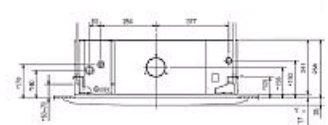
Upper View >



Front View >

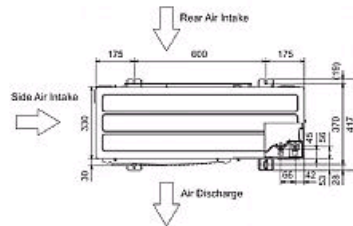


Side View >

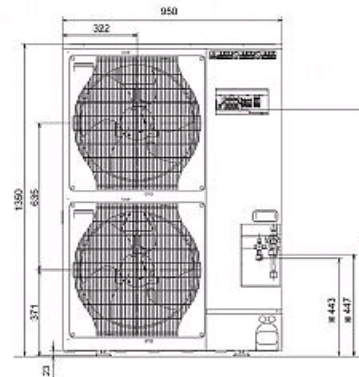


PUHZ-HRP71VHA2

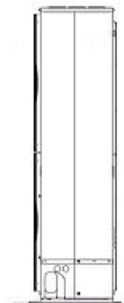
Upper View >



Front View >



Right Side View >



Telephone: 01707 282880

Email: air.conditioning@meuk.mee.com Website: <http://www.mitsubishielectric.co.uk/aircon>

Mitsubishi Electric reserves the right to make any variation in technical specification to the equipment described, or to withdraw or replace products without prior notification or public announcement.

Tel:
Fax:

