



PLA-RP100BA3

Zubadan Inverter Heat Pump

R410A 4-Way Blow Ceiling Cassette System

The new Mr Slim Zubadan Inverter heat pumps achieve an excellent heating performance even when the outdoor air temperature is as low as -25 degrees C.

- **Optional 'I See Sensor' for energy saving and smooth temperature control throughout the room**
- **Airflow controllable for ceiling heights up to 4.2m, with automatic adjustment of fan speed**
- **Reduced draft air distribution, with independent vane control**
- **Filter lowering operation down to 4m (optional PLP-6BAJ grille required)**



Pictures not to scale

Product Details

PLA-RP100BA3 Indoor Unit

Capacity (kW):	
Heating (Nominal) (Low - High)	11.20 (4.50 - 14.00)
Cooling (Nominal) (Low - High)	10.00 (4.90 - 11.40)
Heating (UK) (Low - High)	11.10 (4.45 - 13.85)
Cooling (UK) (Low - High)	9.20 (4.50 - 10.50)
SHF R410A (Nominal)	0.74
COP / EER (Nominal)	4.41 / 4.1
Energy Label Heating / Cooling	A / A
Width (grille) - mm	840 (950)
Depth (grille) - mm	840 (950)
Height (grille) - mm	298 (35)
Weight (grille) - kg	26 (6)
Airflow (m3/min) - Lo-Mi1-Mi2-Hi	20-23-26-30
Noise (dBA) - Lo-Mi1-Mi2-Hi	32-34-37-40
Electrical Supply	Fed by Outdoor Unit
Phase	Single
Fuse Rating (BS88) - HRC (A)	6
Interconnecting Cable No. Cores	4

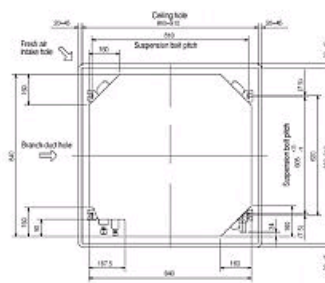
PUHZ-HRP100VHA2 Outdoor Unit

Width - mm	950
Depth - mm	330+30
Height - mm	1350
Weight - kg	120
Noise (dBA) (Heating /Cooling) - Lo-Hi	48-52 /48-51
Electrical Supply	220-240v, 50Hz
Phase	Single
Fuse Rating (BS88) - HRC (A)	40
SystemPower Input (kW) - Heating (Nominal)	2.54
SystemPower Input (kW) - Cooling (Nominal)	2.44
SystemPower Input (kW) - Heating (UK)	3.68
SystemPower Input (kW) - Cooling (UK)	2.07
Starting Current (A)	14
SystemRunning Current (A) - Heating / Cooling	11.76 / 11.26
Mains Cable No. Cores	3
Max Pipe Length (m)	75
Max Height Difference (m)	30
Charge (kg) - 30m	5.5

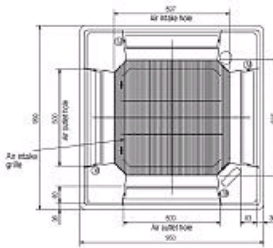
Dimensions

PLA-RP100BA3

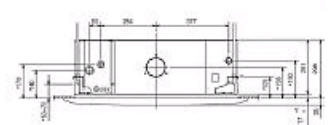
Upper View >



Front View >

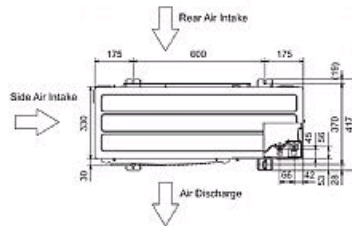


Side View >

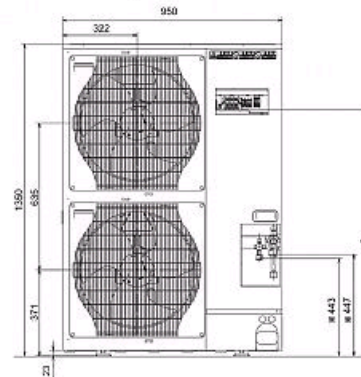


PUHZ-HRP100VHA2

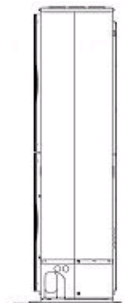
Upper View >



Front View >



Right Side View >



Telephone: 01707 282880

Email: air.conditioning@meuk.mee.com Website: <http://www.mitsubishielectric.co.uk/aircon>

Mitsubishi Electric reserves the right to make any variation in technical specification to the equipment described, or to withdraw or replace products without prior notification or public announcement.

Tel:
Fax:

