



# PLA-RP100BA2

Power Inverter Heat Pump

R410A High COP 4-Way Blow Ceiling Cassette System

Advanced inverter technology makes the Mr Slim Power Inverter the number one choice for improving comfort. They provide energy savings of up to 70% annually when compared to a previous non-inverter model. Operating noise has also been reduced thanks to improvements in fan design, while existing pipe work is reusable for easier maintenance and installation.

- **Optional 'I See Sensor' for energy saving and smooth temperature control throughout the room**
- **Airflow controllable for ceiling heights up to 4.2m, with automatic adjustment of fan speed**
- **Reduced draft air distribution, with independent vane control**
- **Filter lowering operation down to 4m (optional PLP-6BAJ grille required)**



Pictures not to scale

## Product Details

### PLA-RP100BA2 Indoor Unit

Capacity (kW):	
Heating (Nominal) (Low - High)	11.20 (4.50 - 14.00)
Cooling (Nominal) (Low - High)	10.00 (4.90 - 11.40)
Heating (UK) (Low - High)	9.50 (3.85 - 11.90)
Cooling (UK) (Low - High)	9.00 (4.40 - 10.25)
SHF R410A (Nominal)	0.79
COP / EER (Nominal)	4.31 / 4
Energy Label Heating / Cooling	A / A
Width (grille) - mm	840 (950)
Depth (grille) - mm	840 (950)
Height (grille) - mm	298 (35)
Weight (grille) - kg	27 (6)
Airflow (m3/min) - Lo-Mi1-Mi2-Hi	20-23-26-30
Noise (dBA) - Lo-Mi1-Mi2-Hi	32-34-37-40
Pipe Size Gas mm (in)	15.88 (5/8)
Pipe Size Liquid mm (in)	9.52 (3/8)
Electrical Supply	Fed by Outdoor Unit
Phase	Single
Fuse Rating (BS88) - HRC (A)	6
Interconnecting Cable No. Cores	4
Grille Ref	PLP-6BA GRILLE
Remote Controller Ref	PAR-21MAA

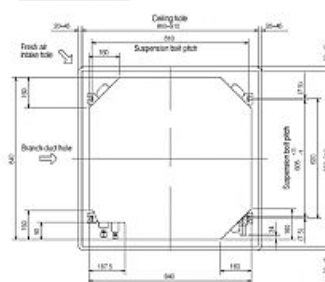
### PUHZ-RP100YHA3 Outdoor Unit

Width - mm	950
Depth - mm	330 + 30
Height - mm	1350
Weight - kg	130
Noise (dBA) (Heating /Cooling)	51 /49
Electrical Supply	380-415v, 50Hz
Phase	Single
Fuse Rating (BS88) - HRC (A)	16
SystemPower Input (kW) - Heating (Nominal)	2.6
SystemPower Input (kW) - Cooling (Nominal)	2.5
SystemPower Input (kW) - Heating (UK)	2.31
SystemPower Input (kW) - Cooling (UK)	2.13
Starting Current (A)	5
SystemRunning Current (A) - Heating / Cooling	4.9 / 5.02
Mains Cable No. Cores	5
Max Pipe Length (m)	75
Max Height Difference (m)	30
Charge (kg) - 30m	5

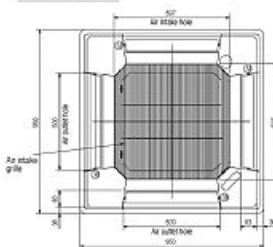
## Dimensions

PLA-RP100BA2

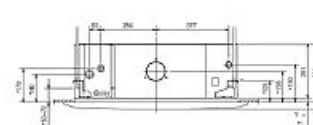
### Upper View >



### Front View >

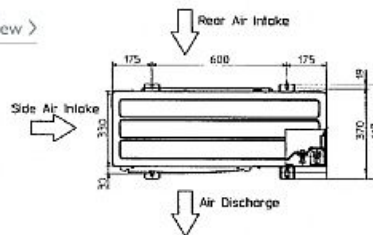


### Side View >

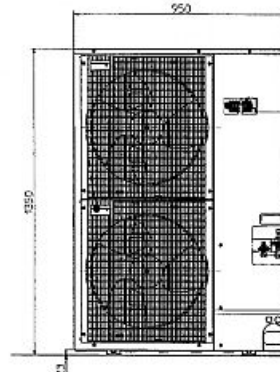


PUHZ-RP100YHA3

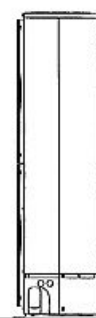
### Upper View >



### Front View >



### Side View >



Telephone: 01707 282880

Email: [air.conditioning@meuk.mee.com](mailto:air.conditioning@meuk.mee.com) Website: <http://www.mitsubishielectric.co.uk/aircon>

Tel:  
Fax:

Mitsubishi Electric reserves the right to make any variation in technical specification to the equipment described, or to withdraw or replace products without prior notification or public announcement.

