



PLA-RP125BA

Heat Pump

R410A 4-Way Blow Ceiling Cassette System

- Airflow controllable for ceiling heights up to 4.2m, with automatic adjustment of fan speed
- Reduced draft air distribution, with independent vane control
- Filter lowering operation down to 4m (optional PLP-6BAJ grille required)
- Optional 'I See Sensor' for energy saving and smooth temperature control throughout the room



Pictures not to scale

Product Details

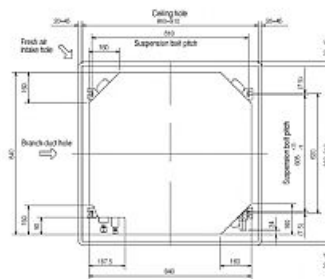
PLA-RP125BA Indoor Unit	
Capacity (kW):	
Heating (Nominal)	14.30
Cooling (Nominal)	12.30
Heating (UK)	12.15
Cooling (UK)	11.05
SHF R410A (Nominal)	0.71
Width (grille) - mm	840 (950)
Depth (grille) - mm	840 (950)
Height (grille) - mm	298 (35)
Weight (grille) - kg	25 (6)
Airflow (m3/min) - Lo-Mi1-Mi2-Hi	22-25-28-31
Noise (dBA) - Lo-Mi1-Mi2-Hi	34-36-39-41
Pipe Size Gas mm (in)	15.88 (5/8)
Pipe Size Liquid mm (in)	9.52 (3/8)
Electrical Supply	Fed by Outdoor Unit
Phase	Single
Fuse Rating (BS88) - HRC (A)	6
Interconnecting Cable No. Cores	4
Grille Ref	PLP-6BA GRILLE
Remote Controller Ref	PAR-21MAA

PUH-P125YHA Outdoor Unit	
Width - mm	950
Depth - mm	330+30
Height - mm	1350
Weight - kg	131
Noise (dBA) (Heating /Cooling)	52 /50
Electrical Supply	380-415v, 50Hz
Phase	3
Fuse Rating (BS88) - HRC (A)	20
SystemPower Input (kW) - Heating (Nominal)	4.23
SystemPower Input (kW) - Cooling (Nominal)	4.36
SystemPower Input (kW) - Heating (UK)	3.76
SystemPower Input (kW) - Cooling (UK)	3.71
Starting Current (A)	70
SystemRunning Current (A) - Heating / Cooling	7.49 / 7.71
Mains Cable No. Cores	5
Max Pipe Length (m)	50
Max Height Difference (m)	50
Charge (kg) - 30m	5

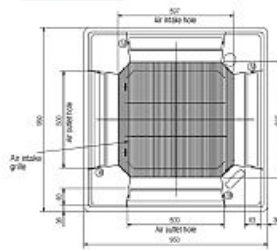
Dimensions

PLA-RP125BA

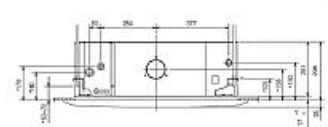
Upper View >



Front View >

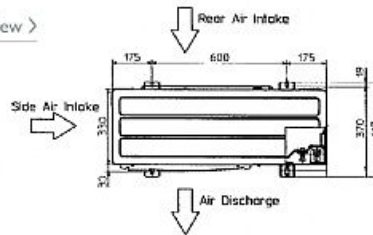


Side View >

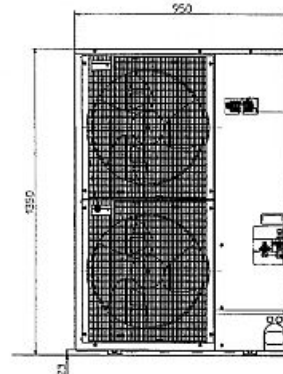


PUH-P125YHA

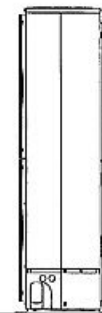
Upper View >



Front View >



Side View >



Telephone: 01707 282880

Email: air.conditioning@meuk.mee.com Website: <http://www.mitsubishielectric.co.uk/aircon>

Tel:
Fax:

Mitsubishi Electric reserves the right to make any variation in technical specification to the equipment described, or to withdraw or replace products without prior notification or public announcement.

