

# Air Conditioning

## Product Information

**PEAD-M R410A Power Inverter  
Heat Pump (Three Phase)**  
Ceiling Concealed Ducted System

Making a  
World of  
Difference

Mr.SUM.



The **PEAD-M Power Inverter** range is a ceiling concealed ducted system that blends a host of outstanding features with an unobtrusive design for easy installation and maintenance. Offering high seasonal efficiency, advanced control options and quiet operation, this range provides extreme flexibility and ease of installation.

### Key Features

- Entire range only 250mm in height
- Wider range of external static pressure settings
- Drain pump included as standard
- Replace Technology available



Cooling | Heating | Ventilation | Controls



# Air Conditioning

## Product Information

**PEAD-M R410A Power Inverter Heat Pump (Three Phase)**  
Ceiling Concealed Ducted System

Making a World of Difference



PEAD-M - INDOOR UNITS		PEAD-M100JA	PEAD-M125JA	PEAD-M140JA
CAPACITY (kW)	Heating (nominal)	11.2 (4.5-14.0)	14.0 (5.0-16.0)	16.0 (5.7-18.0)
	Cooling (nominal)	9.5 (4.9-11.4)	12.5 (5.5-14.0)	13.4 (6.2-15.3)
	Heating (UK)	9.5 (3.85-11.9)	11.9 (4.25-13.6)	13.6 (4.85-15.3)
	Cooling (UK)	9.2 (4.5-10.5)	11.5 (5.05-12.9)	12.3 (5.7-14.1)
	SHF (nominal)	0.82	0.84	0.84
COP / EER (nominal)		4.31 / 3.91	3.99 / 3.24	3.93 / 3.10
SCOP / SEER (BS EN14825)		4.2 / 5.8	3.9 / 5.3	4.0 / 5.2
ErP ENERGY EFFICIENCY CLASS Heating/Cooling		A+ / A	N/A	N/A
AIRFLOW (l/s) Lo-Mi-Hi		400-483-567	492-592-700	533-650-767
PIPE SIZE mm (in)		Gas	15.88 (5/8")	15.88 (5/8")
		Liquid	9.52 (3/8")	9.52 (3/8")
EXTERNAL STATIC PRESSURE (Pa)		35-50-70-100-150	35-50-70-100-150	35-50-70-100-150
SOUND PRESSURE LEVEL (dBA) Lo-Mi-Hi		29-34-38	33-36-40	34-38-43
SOUND POWER LEVEL (dBA)		62	66	67
DIMENSIONS (mm) Width x Depth x Height		1400 x 732 x 250	1400 x 732 x 250	1600 x 732 x 250
WEIGHT (kg)		39	40	44
ELECTRICAL SUPPLY		Fed by Outdoor Unit	Fed by Outdoor Unit	Fed by Outdoor Unit
FUSE RATING (BS88) - HRC (A)		6	6	6
INTERCONNECTING CABLE No. Cores		4	4	4
WIRED REMOTE CONTROLLER REFERENCE		PAR-33MAA	PAR-33MAA	PAR-33MAA

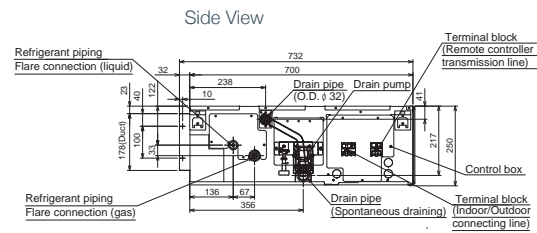
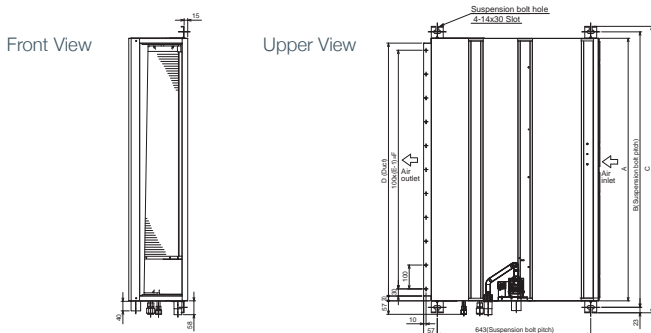
  

PUHZ-ZRP - OUTDOOR UNITS		PUHZ-ZRP100YKA3 <sup>③</sup>	PUHZ-ZRP125YKA3 <sup>③</sup>	PUHZ-ZRP140YKA3 <sup>③</sup>
SOUND PRESSURE LEVEL (dBA) Heating/Cooling		51 / 49	52 / 50	52 / 50
SOUND POWER LEVEL (dBA) Cooling		69	70	70
WEIGHT (kg)		123	125	131
DIMENSIONS (mm) Width x Depth x Height		1050 x 330 + 40 x 1338	1050 x 330 + 40 x 1338	1050 x 330 + 40 x 1338
ELECTRICAL SUPPLY		380-415v, 50Hz	380-415v, 50Hz	380-415v, 50Hz
PHASE		Three	Three	Three
SYSTEM POWER Heating/Cooling (nominal)		2.60 / 2.43	3.51 / 3.86	4.07 / 4.32
		2.18 / 2.07	2.95 / 3.28	3.42 / 3.68
STARTING CURRENT (A)		4.0	4.0	4.0
SYSTEM RUNNING CURRENT (A) Heating/Cooling [MAX]		4.23 / 4.20 [10.7]	5.99 / 6.29 [12.3]	7.59 / 7.06 [15.8]
FUSE RATING (BS88) - HRC (A)		16	16	16
MAINS CABLE No. Cores		5	5	5
MAX PIPE LENGTH (m)		75	75	75
MAX HEIGHT DIFFERENCE (m)		30	30	30
CHARGE REFRIGERANT (kg) / CO <sub>2</sub> EQUIVALENT (t)		5.00 / 10.44	5.00 / 10.44	5.00 / 10.44
R410A (GWP 2088) - 30m				
MAX ADDITIONAL REFRIGERANT (kg) / CO <sub>2</sub> EQUIVALENT (t)		2.40 / 5.01	2.40 / 5.01	2.40 / 5.01
R410A (GWP 2088)				

<sup>③</sup> Three Phase

### PRODUCT DIMENSIONS

### PEAD-M100/125/140JA



Model	A	B	C	D	E	F
PEAD-M100,125JA	1400	1454	1500	1360	14	1300
PEAD-M140JA	1600	1654	1700	1560	16	1500



Telephone: 01707 282880  
email: [air.conditioning@meuk.mee.com](mailto:air.conditioning@meuk.mee.com)  
web: [airconditioning.mitsubishielectric.co.uk](http://airconditioning.mitsubishielectric.co.uk)

UNITED KINGDOM Mitsubishi Electric Europe Living Environment Systems Division  
Travellers Lane, Hatfield, Hertfordshire, AL10 8XB, England General Enquiries Telephone: 01707 282880 Fax: 01707 278881

IRELAND Mitsubishi Electric Europe Westgate Business Park, Ballymount, Dublin 24, Ireland  
Telephone: Dublin (01) 419 8800 Fax: Dublin (01) 419 8890 International code: (003531)

Country of origin: United Kingdom - Japan - Thailand - Malaysia. ©Mitsubishi Electric Europe 2017. Mitsubishi and Mitsubishi Electric are trademarks of Mitsubishi Electric Europe B.V. The company reserves the right to make any variation in technical specification to the equipment described, or to withdraw or replace products without prior notification or public announcement. Mitsubishi Electric is constantly developing and improving its products. All descriptions, illustrations, drawings and specifications in this publication present only general particulars and shall not form part of any contract. All goods are supplied subject to the Company's General Conditions of Sale, a copy of which is available on request. Third-party product and brand names may be trademarks or registered trademarks of their respective owners.

Note: The fuse rating is for guidance only. Please refer to the relevant databook for detailed specification. It is the responsibility of a qualified electrician/electrical engineer to select the correct cable size and fuse rating based on current regulation and site specific conditions. Mitsubishi Electric's air conditioning equipment and heat pump systems contain a fluorinated greenhouse gas, R410A (GWP:2088), R32 (GWP:675), R407C (GWP:1774) or R134a (GWP:1430). \*These GWP values are based on Regulation (EU) No 517/2014 from IPCC 4th edition. In case of Regulation (EU) No.626/2011 from IPCC 3rd edition, these are as follows: R410A (GWP:1975), R32 (GWP: 550), R407C (GWP:1650) or R134a (GWP:1300).



[www.greengateway.mitsubishielectric.co.uk](http://www.greengateway.mitsubishielectric.co.uk)

Mitsubishi Electric UK's commitment to the environment

Follow us @meuk\_Jes  
Follow us @green\_gateway

Mitsubishi Electric  
Living Environmental Systems UK

[mitsubishielectric2](https://www.youtube.com/mitsubishielectric2)

[thehub.mitsubishielectric.co.uk](http://thehub.mitsubishielectric.co.uk)

Effective as of September 2017