

Air Conditioning

Product Information

PEAD-RP140JAQ (Single Phase)
Standard Inverter Heat Pump
Ceiling Concealed Ducted System

Making a
World of
Difference

Mr.SLIM™



Our Standard Inverter range offers customers all the features and benefits of inverter technology whilst being cost effective.

Key Features

- Reduced height - entire range only 250mm
- Wider range of external static pressure settings across entire range
- Drain pump included as standard



Air Conditioning | Heating
Ventilation | Controls



Air Conditioning

Product Information

PEAD-RP140JAQ (Single Phase)
Standard Inverter Heat Pump
 Ceiling Concealed Ducted System

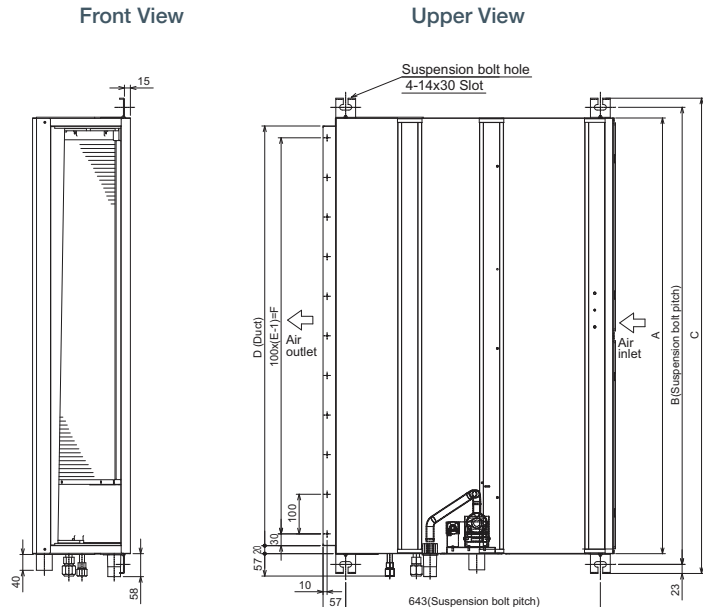
Making a
 World of
 Difference

PEAD-RP - INDOOR UNITS		PEAD-RP140JAQ
CAPACITY (kW)	Heating (nominal)	16.0 (5.0-18.0)
	Cooling (nominal)	13.6 (5.5-15.0)
	Heating (UK)	13.6 (4.25-15.3)
	Cooling (UK)	12.5 (5.05-13.8)
SHF (nominal & UK)		0.84
COP / EER (nominal)		3.61 / 3.01
SCOP / SEER (BS EN14825)		3.7 / 3.2
E.P ENERGY EFFICIENCY CLASS Heating/Cooling		N/A
AIRFLOW (l/s) Lo-Mi-Hi		533-650-767
PIPE SIZE mm (in)	Gas	15.88 (5/8")
	Liquid	9.52 (3/8")
EXTERNAL STATIC PRESSURE (Pa)		35-50-70-100-150
SOUND PRESSURE LEVEL (dBA) Lo-Mi-M2-M3-Hi		34-38-43
SOUND POWER LEVEL (dBA)		66
DIMENSIONS (mm) Width x Depth x Height		1600 x 732 x 250
WEIGHT (kg)		47
ELECTRICAL SUPPLY		Fed by Outdoor Unit
FUSE RATING (BS88) - HRC (A)		6
INTERCONNECTING CABLE No. Cores		4

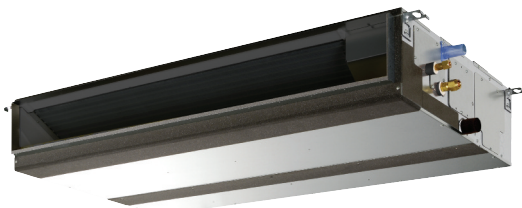
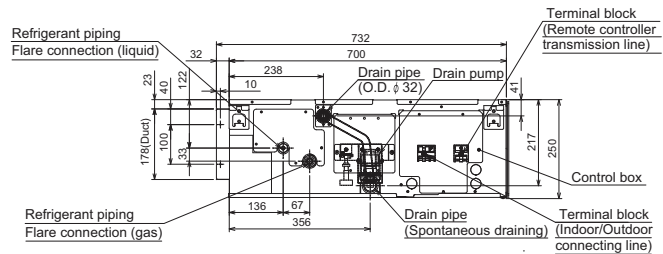
PUHZ-P - OUTDOOR UNITS		PUHZ-P140VHA3
SOUND PRESSURE LEVEL (dBA) Heating/Cooling		56 / 52
SOUND POWER LEVEL (dBA) Heating/Cooling		73
WEIGHT (kg)		99
DIMENSIONS (mm) Width x Depth x Height		950 x 330 + 30 x 1350
ELECTRICAL SUPPLY		220-240v, 50Hz
PHASE		Single
SYSTEM POWER Heating/Cooling (nominal)		4.43 / 4.52
INPUT (kW) Heating/Cooling (UK)		3.94 / 3.84
STARTING CURRENT (A)		15.0
SYSTEM RUNNING CURRENT (A) Heating/Cooling [MAX]		23.8 / 24.97 [32.28]
FUSE RATING (BS88) - HRC (A)		40
MAINS CABLE No. Cores		3
MAX PIPE LENGTH (m)		50
MAX HEIGHT DIFFERENCE (m)		30
CHARGE R410A (kg)		4.5

Notes: All units charged to 7m (35-71), 30m (100-140) pipe length.

DIMENSIONS



Side View



Model	A	B	C	D	E	F
PEAD-RP140JAQ	1600	1654	1700	1560	16	1500



Telephone: 01707 282880

email: air.conditioning@meuk.mee.com web: www.airconditioning.mitsubishielectric.co.uk

UNITED KINGDOM Mitsubishi Electric Europe Living Environmental Systems Division
 Travellers Lane, Hatfield, Hertfordshire, AL10 8XB, England General Enquiries Telephone: 01707 282880 Fax: 01707 278881

IRELAND Mitsubishi Electric Europe Westgate Business Park, Ballymount, Dublin 24, Ireland
 Telephone: Dublin (01) 419 8800 Fax: Dublin (01) 419 8890 International code: (003531)

Country of origin: United Kingdom - Japan - Thailand - Malaysia. ©Mitsubishi Electric Europe 2015. Mitsubishi and Mitsubishi Electric are trademarks of Mitsubishi Electric Europe B.V. The company reserves the right to make any variation in technical specification to the equipment described, or to withdraw or replace products without prior notification or public announcement. Mitsubishi Electric is constantly developing and improving its products. All descriptions, illustrations, drawings and specifications in this publication present only general particulars and shall not form part of any contract. All goods are supplied subject to the Company's General Conditions of Sale, a copy of which is available on request. Third-party product and brand names may be trademarks or registered trademarks of their respective owners.



Note: The fuse rating is for guidance only. Please refer to the relevant databook for detailed specification. It is the responsibility of a qualified electrician/electrical engineer to select the correct cable size and fuse rating based on current regulation and site specific conditions. Mitsubishi Electric's air conditioning and heat pump systems contain fluorinated greenhouse gases R410A, R407C and R134a.



www.greengateway.mitsubishielectric.co.uk

Mitsubishi Electric UK's commitment to the environment



Follow us @meuk_Jes
 Follow us @green_gateway



Mitsubishi Electric
 Living Environmental Systems UK



[mitsubishielectric2](https://www.youtube.com/mitsubishielectric2)

Effective as of April 2015