



PEAD-RP Standard Inverter Heat Pump

Ceiling Concealed Ducted System (Single Phase)

Our Standard Inverter range offers customers all the features and benefits of inverter technology whilst being cost effective.

Key Features

- Auto-Restart
- Quiet operation
- Auto-Changeover
- Hot Start - draught prevention
- Factory charged refrigerant up to 30m
- Long-life filter
- Low unit height - entire range only 250mm - minimal intrusion into occupied space
- Drain lift pump as standard
- High external static pressure
- Replace Technology available
- Refrigerant volume check function
- Duty Standby Operation
- Noise Reduction
- Demand Control
- Optional Heating Only

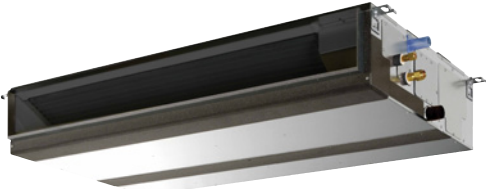


Air Conditioning

Product Information

PEAD-RP Standard Inverter Heat Pump Ceiling Concealed Ducted System (Single Phase)

Making a
World of
Difference



PEAD-RP - INDOOR UNITS		PEAD-RP35JAQ	PEAD-RP50JAQ	PEAD-RP60JAQ	PEAD-RP71JAQ	PEAD-RP100JAQ	PEAD-RP125JAQ	PEAD-RP140JAQ
CAPACITY (kW)	Heating (nominal)	4.1 (1.7-5.0)	5.9 (1.7-7.2)	7.0 (2.5-8.0)	8.0 (2.6-10.2)	11.2 (4.5-12.5)	14.0 (5.0-16.0)	16.0 (5.0-18.0)
	Cooling (nominal)	3.6 (1.4-3.9)	4.9 (2.3-5.6)	5.7 (2.3-6.3)	7.1 (2.8-8.1)	9.4 (4.9-11.2)	12.3 (5.5-14.0)	13.6 (5.5-15.0)
	Heating (UK)	3.49 (1.45-4.25)	5.02 (1.45-6.12)	5.95 (2.13-6.80)	6.80 (2.21-8.67)	9.5 (3.85-10.65)	11.9 (4.25-13.6)	13.6 (4.25-15.3)
	Cooling (UK)	3.31 (1.29-3.59)	4.51 (2.12-5.15)	5.24 (2.12-5.80)	6.53 (2.58-7.45)	8.65 (4.5-10.3)	11.3 (5.05-12.9)	12.5 (5.05-13.8)
SHF (nominal & UK)		0.85	0.85	0.86	0.83	0.85	0.85	0.84
COP / EER (nominal)		3.69 / 3.42	3.64 / 3.31	3.63 / 3.41	3.92 / 3.41	3.61 / 3.01	3.62 / 2.91	3.61 / 3.01
SCOP / SEER (BS EN14825)		4.0 / 5.5	4.2 / 5.4	4.0 / 5.6	3.9 / 5.8	3.8 / 4.6	3.9 / 3.5	3.7 / 3.2
ErP ENERGY EFFICIENCY CLASS	Heating/Cooling	A+ / A	A+ / A	A+ / A+	A / A+	A / B	N/A	N/A
AIRFLOW (m³/min)	Lo-Mi-Hi	10-12-14	12-14.5-17	14.5-18-21	17.5-21-25	24-29-34	29.5-35.5-42	32-39-46
PIPE SIZE mm (in)	Gas	9.52 (3/8")	12.7 (1/2")	15.88 (5/8")	15.88 (5/8")	15.88 (5/8")	15.88 (5/8")	15.88 (5/8")
	Liquid	6.35 (1/4")	6.35 (1/4")	6.35 (1/4")	9.52 (3/8")	9.52 (3/8")	9.52 (3/8")	9.52 (3/8")
EXTERNAL STATIC PRESSURE (Pa)		35-50-70-100-150	35-50-70-100-150	35-50-70-100-150	35-50-70-100-150	35-50-70-100-150	35-50-70-100-150	35-50-70-100-150
SOUND PRESSURE LEVEL (dBA)	Lo-Mi-Hi	23-27-30	26-31-35	25-29-33	26-30-34	29-34-38	33-36-40	34-38-43
SOUND POWER LEVEL (dBA)		52	57	55	57	61	63	66
DIMENSIONS (mm)	Width x Depth x Height	900 x 732 x 250	900 x 732 x 250	1100 x 732 x 250	1100 x 732 x 250	1400 x 732 x 250	1400 x 732 x 250	1600 x 732 x 250
WEIGHT (kg)		26	28	33	33	41	43	47
ELECTRICAL SUPPLY		Fed by Outdoor Unit	Fed by Outdoor Unit	Fed by Outdoor Unit	Fed by Outdoor Unit	Fed by Outdoor Unit	Fed by Outdoor Unit	Fed by Outdoor Unit
FUSE RATING (BS88) - HRC (A)		6	6	6	6	6	6	6
INTERCONNECTING CABLE No. Cores		4	4	4	4	4	4	4

SUZ-KA / PUHZ-P - OUTDOOR UNITS		SUZ-KA35VA4	SUZ-KA50VA4	SUZ-KA60VA4	SUZ-KA71VA4	PUHZ-P100VHA4	PUHZ-P125VHA3	PUHZ-P140VHA3
SOUND PRESSURE LEVEL (dBA) Heating/Cooling		50 / 49	52 / 52	55 / 55	55 / 55	54 / 50	55 / 51	56 / 52
SOUND POWER LEVEL (dBA) Cooling		62	65	65	69	70	71	73
WEIGHT (kg)		35	54	50	53	75	99	99
DIMENSIONS (mm)	Width x Depth x Height	800 x 285 x 550	840 x 330 x 880	840 x 330 x 880	840 x 330 x 880	950 x 330 x 30 x 943	950 x 330 x 30 x 1350	950 x 330 x 30 x 1350
ELECTRICAL SUPPLY		220-240v, 50Hz	220-240v, 50Hz	220-240v, 50Hz	220-240v, 50Hz	220-240v, 50Hz	220-240v, 50Hz	220-240v, 50Hz
PHASE		Single	Single	Single	Single	Single	Single	Single
SYSTEM POWER	Heating/Cooling (nominal)	1.11 / 1.50	1.62 / 1.48	1.93 / 1.67	2.04 / 2.08	3.103 / 3.120	3.870 / 4.220	4.430 / 4.520
INPUT (kW)	Heating/Cooling (UK)	0.99 / 1.28	1.44 / 1.26	1.72 / 1.42	1.82 / 1.77	2.76 / 2.58	3.44 / 3.59	3.94 / 3.84
STARTING CURRENT (A)		5.1	7.3	8.6	9.3	12.0	15.0	15.0
SYSTEM RUNNING CURRENT (A)	Heating/Cooling [MAX]	4.90 / 5.10 [9.3]	6.90 / 7.30 [13.4]	7.50 / 8.60 [15.6]	9.30 / 9.10 [18.1]	16.27 / 15.55 [30.65]	19.03 / 19.66 [30.76]	23.8 / 24.97 [32.28]
FUSE RATING (BS88) - HRC (A)		16	20	20	20	32	32	40
MAINS CABLE No. Cores		3	3	3	3	3	3	3
MAX PIPE LENGTH (m)		20	30	30	30	50	50	50
MAX HEIGHT DIFFERENCE (m)		12	30	30	30	30	30	30
CHARGE R410A (kg)		1.15	1.45	1.55	1.90	3.0	4.5	4.5



Telephone: 01707 282880

email: air.conditioning@meuk.mee.com web: airconditioning.mitsubishielectric.co.uk

UNITED KINGDOM Mitsubishi Electric Europe Living Environmental Systems Division
Travellers Lane, Hatfield, Hertfordshire, AL10 8XB, England General Enquiries Telephone: 01707 282880 Fax: 01707 278881

IRELAND Mitsubishi Electric Europe Westgate Business Park, Ballymount, Dublin 24, Ireland
Telephone: Dublin (01) 419 8800 Fax: Dublin (01) 419 8890 International code: (003531)

Country of origin: United Kingdom - Japan - Thailand - Malaysia. ©Mitsubishi Electric Europe 2014. Mitsubishi and Mitsubishi Electric are trademarks of Mitsubishi Electric Europe B.V. The company reserves the right to make any variation in technical specification to the equipment described, or to withdraw or replace products without prior notification or public announcement. Mitsubishi Electric is constantly developing and improving its products. All descriptions, illustrations, drawings and specifications in this publication present only general particulars and shall not form part of any contract. All goods are supplied subject to the Company's General Conditions of Sale, a copy of which is available on request. Third-party product and brand names may be trademarks or registered trademarks of their respective owners.



Effective as of May 2014



www.greengateway.mitsubishielectric.co.uk

Mitsubishi Electric UK's commitment to the environment

Follow us @meuk_les
Follow us @green_gateway

Connect with Green Gateway

mitsubishielectric2