

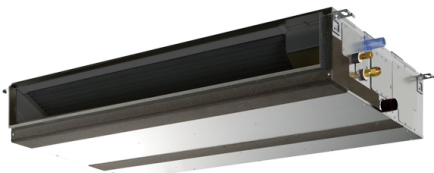
# Air Conditioning

## Product Information

### PEAD-RP125JAQ : Power Inverter Heat Pump

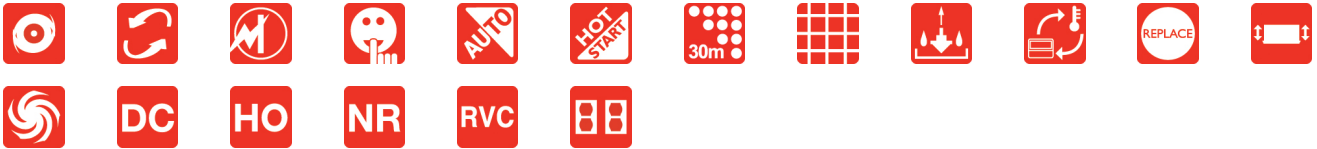
R410A Ceiling Concealed Ducted System

Mr.SLIM™



Our wide range of Power Inverters offer customers high seasonal efficiency, advanced control options and quiet operation, whilst providing greater flexibility and ease of installation.

## FEATURES



### INDOOR

Heating Capacity (kW) (nominal)	14.0 (5 - 16)
Cooling Capacity (kW) (nominal)	12.5 (5.5 - 14)
Heating Capacity (kW) (UK)	11.9 (4.25 - 13.6)
Cooling Capacity (kW) (UK)	11.5 (5.05 - 12.9)
SHF (nominal and UK)	0.84
COP / EER (nominal)	3.86 / 3.09
SCOP / SEER	3.8 / 4.8
Energy Efficiency Class - Heating / Cooling	N/A / N/A
Airflow (m <sup>3</sup> /min) Lo-Mi-Hi	29.5 - 33.5 - 42
Pipe Size Gas (mm [in])	15.88 (5/8")
Pipe Size Liquid (mm [in])	9.52 (3/8")
External Static Pressure (Pa) Lo-Mi-Mi2-Mi3-Hi	35 - 50 - 70 - 100 - 150
Sound Pressure Level (dBA) Lo-Mi-Hi	33 - 36 - 40
Sound Power Level (dBA) Cooling	63
Dimensions (mm) Width x Depth x Height	1400 x 732 x 250
Weight (kg)	43
Electrical Supply	FED BY OUTDOOR UNIT
Phase	SINGLE
Fuse Rating (BS88) - HRC (A)	6
Interconnecting Cable No. Cores	4

### OUTDOOR

Sound Pressure Level (dBA) Heating / Cooling	52 / 50
Sound Power Level (dBA) Cooling	70
Weight (kg)	126
Dimensions (mm) Width x Depth x Height	1050 x (330+30) x 1338
Electrical Supply	380-415V, 50HZ
Phase	THREE
System Power Input (kW) - Heating / Cooling (nominal)	3.63 / 4.05
System Power Input (kW) - Heating / Cooling (UK)	3.60 / 3.09
Starting Current (A)	4
System Running Current (A) [MAX] - Heating / Cooling	7.83 / 8.24 [12.3]
Fuse Rating (BS88) - HRC (A)	16
Mains Cable No. Cores	5
Max Pipe Length (m)	75
Max Height Difference (m)	30
Charge R410A (kg) - Pre charged length (m)	5 - 30

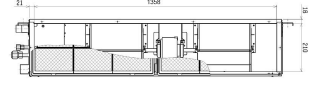
### DIMENSIONS

PEAD-RP125JAQ

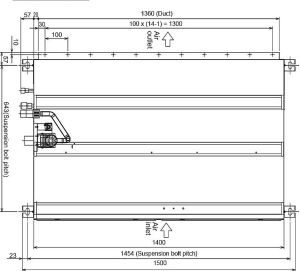
Front View >



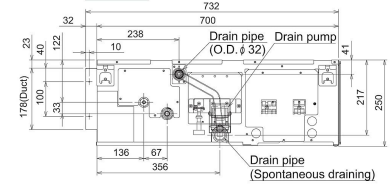
Rear View >



Upper View >



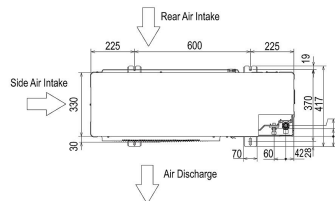
Side View >



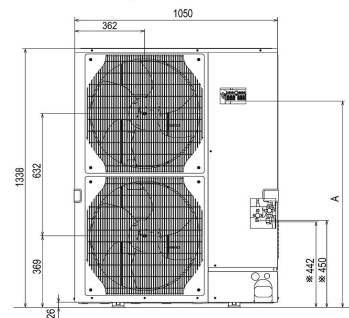
### DIMENSIONS

PUHZ-ZRP125YKA

Upper View >



Front View >



Right Side View >

