

PEAD-RP Power Inverter Heat Pump

R410A Ceiling Concealed Ducted System

New Series



Technical Information >>

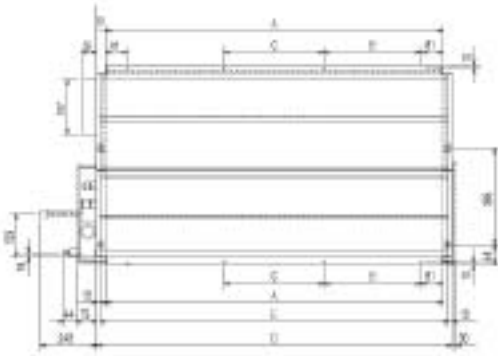
| PEAD-RP - INDOOR UNITS | | PEAD-RP1.6EA | PEAD-RP2EA | PEAD-RP2.5EA | PEAD-RP3EA | PEAD-RP4EA | PEAD-RP5EA | PEAD-RP6EA |
|---|-------------------|---------------------|---------------------|---------------------|---------------------|---------------------|---------------------|---------------------|
| CAPACITY (kW) | Heating (nominal) | 4.1 (1.6-5.2) | 6.0 (2.5-7.3) | 7.0 (2.8-8.2) | 8.0 (3.5-10.2) | 11.2 (4.5-14.0) | 14.0 (5.0-16.0) | 16.0 (5.0-18.0) |
| | Cooling (nominal) | 3.6 (1.6-4.5) | 4.9 (2.3-5.6) | 6.0 (2.7-6.7) | 7.1 (3.3-8.1) | 10.0 (4.9-11.4) | 12.5 (5.5-14.0) | 14.0 (5.5-15.3) |
| | Heating (UK) | 3.5 (1.35-4.4) | 5.1 (2.15-6.2) | 5.95 (2.4-6.95) | 6.8 (3.0-8.65) | 9.5 (3.85-11.9) | 11.9 (4.25-13.6) | 13.6 (4.25-15.3) |
| | Cooling (UK) | 3.25 (1.45-4.05) | 4.4 (2.05-5.05) | 5.4 (2.45-6.05) | 6.4 (2.95-7.3) | 9.0 (4.4-10.25) | 11.25 (4.95-12.6) | 12.6 (4.95-13.75) |
| SHF (nominal) | | 0.88 | 0.82 | 0.79 | 0.83 | 0.83 | 0.83 | 0.82 |
| COP / EER (nominal) | | 3.25 / 3.21 | 3.64 / 3.22 | 3.68 / 3.23 | 3.42 / 3.30 | 3.22 / 3.25 | 3.41 / 3.39 | 3.36 / 2.85 |
| ENERGY LABEL | Heating/Cooling | C / A | A / A | A / A | B / A | C / A | B / A | C / C |
| AIRFLOW (m3/min) | Lo-Hi | 11-14 | 13.5-17 | 17-21 | 20-25 | 27-34 | 33.5-42 | 36.5-46 |
| PIPE SIZE mm(in) | Gas | 12.7 (1/2") | 12.7 (1/2") | 15.88 (5/8") | 15.88 (5/8") | 15.88 (5/8") | 15.88 (5/8") | 15.88 (5/8") |
| | Liquid | 6.35 (1/4") | 6.35 (1/4") | 9.52 (3/8") | 9.52 (3/8") | 9.52 (3/8") | 9.52 (3/8") | 9.52 (3/8") |
| EXTERNAL STATIC PRESSURE (Pa) Lo-Hi | | 30-70 | 30-70 | 30-70 | 70-130*1 | 70-130*2 | 70-130*3 | 70-130*3 |
| NOISE (dBA) Lo-Hi (with optional motor) | | 34-38 | 36-40 | 37-41 | 37-41 (40-45) | 41-46 (42-48) | 44-50 (46-52) | 46-51 (47-53) |
| DIMENSIONS (mm) | Width | 935 | 935 | 1175 | 1175 | 1415 | 1415 | 1715 |
| | Depth | 700 | 700 | 700 | 740 | 740 | 740 | 740 |
| | Height | 295 | 295 | 295 | 325 | 325 | 325 | 325 |
| WEIGHT (kg) | | 33 | 35 | 42 | 44 | 62 | 65 | 70 |
| ELECTRICAL SUPPLY | | Fed by Outdoor Unit | Fed by Outdoor Unit | Fed by Outdoor Unit | Fed by Outdoor Unit | Fed by Outdoor Unit | Fed by Outdoor Unit | Fed by Outdoor Unit |
| PHASE | | Single | Single | Single | Single | Single | Single | Single |
| FUSE RATING (BS88) – HRC (A) | | 6 | 6 | 6 | 6 | 6 | 6 | 6 |
| INTERCONNECTING CABLE No. CORES | | 4 | 4 | 4 | 4 | 4 | 4 | 4 |

Notes: External static pressure - (1.6/2/2.5 : 30 + 70Pa connections as standard) / (3/4/5/6 : 130Pa optional fan motor - *1 PAC-SK005MT-F, *2 PAC-SK004MT-F, *3 PAC-SK003MT-F).

| PUHZ-RP - OUTDOOR UNITS | | PUHZ-RP1.6VHA | PUHZ-RP2VHA | PUHZ-RP2.5VHA | PUHZ-RP3VHA | PUHZ-RP4VHA | PUHZ-RP5VHA | PUHZ-RP6VHA |
|--|---------------------------|----------------|----------------|----------------|----------------|----------------|----------------|----------------|
| NOISE (dBA) | Heating/Cooling | 46 / 44 | 46 / 44 | 48 / 47 | 48 / 47 | 51 / 49 | 52 / 50 | 52 / 50 |
| WEIGHT (kg) | | 45 | 45 | 75 | 75 | 121 | 121 | 121 |
| DIMENSIONS (mm) | Width | 800 | 800 | 950 | 950 | 950 | 950 | 950 |
| | Depth | 330 + 23 | 330 + 23 | 330 + 30 | 330 + 30 | 330 + 30 | 330 + 30 | 330 + 30 |
| | Height | 600 | 600 | 943 | 943 | 1350 | 1350 | 1350 |
| ELECTRICAL SUPPLY | | 220-240v, 50Hz | 220-240v, 50Hz | 220-240v, 50Hz | 220-240v, 50Hz | 220-240v, 50Hz | 220-240v, 50Hz | 220-240v, 50Hz |
| PHASE | | Single | Single | Single | Single | Single | Single | Single |
| SYSTEM POWER INPUT (kW) | Heating/Cooling (nominal) | 1.26 / 1.12 | 1.65 / 1.52 | 1.90 / 1.86 | 2.34 / 2.15 | 3.48 / 3.08 | 4.11 / 3.69 | 4.76 / 4.91 |
| | Heating/Cooling (UK) | 1.12 / 0.95 | 1.47 / 1.29 | 1.69 / 1.58 | 2.08 / 1.83 | 3.10 / 2.62 | 3.66 / 3.14 | 4.24 / 4.18 |
| STARTING CURRENT (A) | | 5 | 5 | 5 | 5 | 5 | 5 | 5 |
| SYSTEM RUNNING CURRENT (A) Heating/Cooling | | 4.78 / 4.56 | 7.08 / 6.77 | 8.2 / 7.31 | 11.29 / 9.59 | 16.47 / 14.86 | 20.12 / 18.42 | 23.06 / 23.42 |
| FUSE RATING (BS88) – HRC (A) | | 16 | 16 | 25 | 25 | 32 | 32 | 40 |
| MAINS CABLE No. Cores | | 3 | 3 | 3 | 3 | 3 | 3 | 3 |
| MAX PIPE LENGTH (m) | | 50 | 50 | 50 | 50 | 75 | 75 | 75 |
| MAX HEIGHT DIFFERENCE (m) | | 30 | 30 | 30 | 30 | 30 | 30 | 30 |
| CHARGE R410A (kg) - 30m | | 2.5 | 2.5 | 3.5 | 3.5 | 5.0 | 5.0 | 5.0 |

INDOOR UNIT PEAD-RP1.6-2.5EA

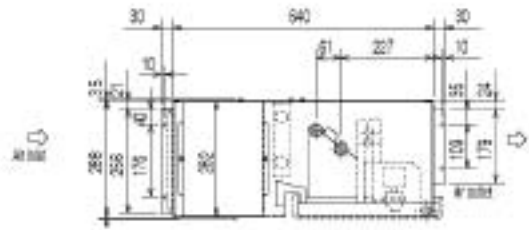
Upper View >



Front View >



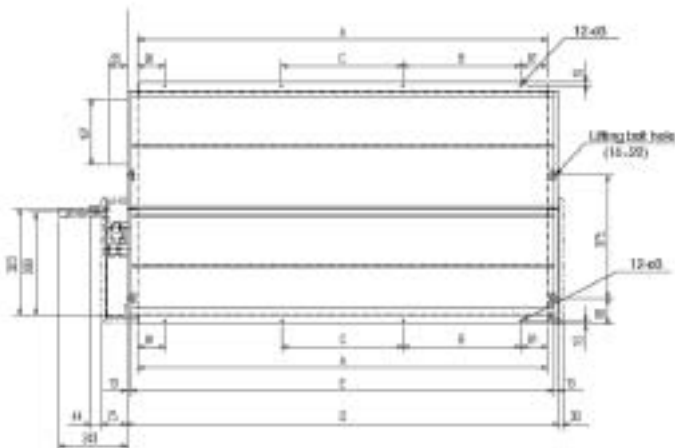
Side View >



| Models | A | B | C | D | E |
|------------|------|-----|-----|------|------|
| Size 1.6/2 | 772 | 305 | - | 830 | 804 |
| Size 2.5 | 1012 | 280 | 290 | 1070 | 1044 |

INDOOR UNIT PEAD-RP3-6EA

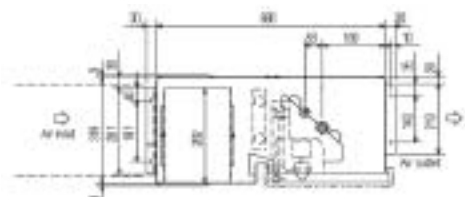
Upper View >



Front View >



Side View >



| Models | A | B | C | D | E |
|----------|------|-----|-----|------|------|
| Size 3 | 1012 | 280 | 290 | 1070 | 1044 |
| Size 4/5 | 1252 | 360 | 370 | 1310 | 1284 |
| Size 6 | 1552 | 460 | 470 | 1610 | 1584 |