



# PCA-RP71KAQ

Power Inverter Heat Pump

R410A Ceiling Suspended System

Advanced inverter technology makes the Mr Slim Power Inverter the number one choice for improving comfort. They provide energy savings of up to 70% annually when compared to a previous non-inverter model. Operating noise has also been reduced thanks to improvements in fan design, while existing pipe work is reusable for easier maintenance and installation.

- **Indoor unit designed for direct ceiling suspension**
- **Flush to wall installation for concealment of service connections**



Pictures not to scale

## Product Details

### PCA-RP71KAQ Indoor Unit

|                                  |                     |
|----------------------------------|---------------------|
| Capacity (kW):                   |                     |
| Heating (Nominal) (Low - High)   | 8.00 (3.50 - 10.20) |
| Cooling (Nominal) (Low - High)   | 7.10 (3.30 - 8.10)  |
| Heating (UK) (Low - High)        | 6.80 (3.00 - 8.65)  |
| Cooling (UK) (Low - High)        | 6.55 (3.05 - 7.45)  |
| SHF R410A (Nominal)              | 0.76                |
| COP / EER (Nominal)              | 3.62 / 3.62         |
| Energy Label Heating / Cooling   | A / A               |
| Width - mm                       | 1280                |
| Depth - mm                       | 680                 |
| Height - mm                      | 230                 |
| Weight - kg                      | 32                  |
| Airflow (m3/min) - Lo-Mi1-Mi2-Hi | 16-17-18-20         |
| Noise (dBA) - Lo-Mi1-Mi2-Hi      | 35-37-39-41         |
| Pipe Size Gas mm (in)            | 15.88 (5/8)         |
| Pipe Size Liquid mm (in)         | 9.52 (3/8)          |
| Electrical Supply                | Fed by Outdoor Unit |
| Phase                            | Single              |
| Fuse Rating (BS88) - HRC (A)     | 6                   |
| Interconnecting Cable No. Cores  | 4                   |

### PUHZ-RP71VHA4 Outdoor Unit

|   |                |
|---|----------------|
| Width - mm                                    | 950            |
| Depth - mm                                    | 330 +30        |
| Height - mm                                   | 943            |
| Weight - kg                                   | 67             |
| Noise (dBA) (Heating /Cooling) - Lo-Hi        | 48 /44-47      |
| Electrical Supply                             | 220-240v, 50Hz |
| Phase   | Single         |
| Fuse Rating (BS88) - HRC (A)                  | 25             |
| SystemPower Input (kW) - Heating (Nominal)    | 2.21           |
| SystemPower Input (kW) - Cooling (Nominal)    | 1.96           |
| SystemPower Input (kW) - Heating (UK)         | 1.97           |
| SystemPower Input (kW) - Cooling (UK)         | 1.67           |
| SystemRunning Current (A) - Heating / Cooling | 10.06 / 8.94   |
| Mains Cable No. Cores                         | 3              |
| Max Pipe Length (m)                           | 50             |
| Max Height Difference (m)                     | 30             |
| Charge (kg) - 30m                             | 3.5            |

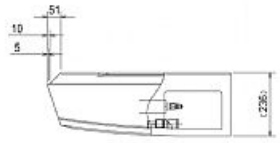
## Dimensions

### PCA-RP71KAQ

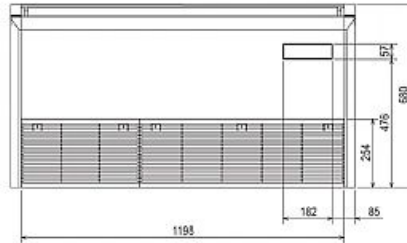
#### Front View >



#### Side View >

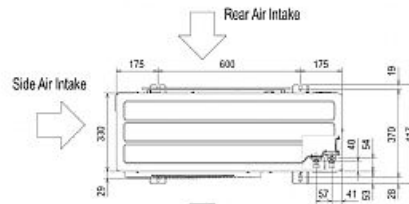


#### Lower View >

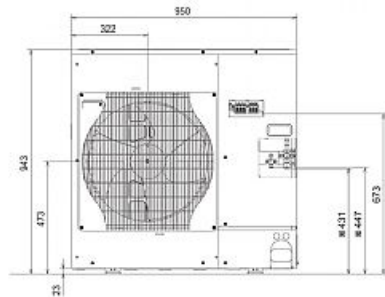


### PUHZ-RP71VHA4

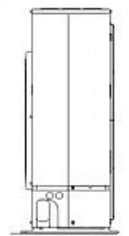
#### Upper View >



#### Front View >



#### Right Side View >



Telephone: 01707 282880

Email: [air.conditioning@meuk.mee.com](mailto:air.conditioning@meuk.mee.com) Website: <http://www.mitsubishielectric.co.uk/aircon>

Mitsubishi Electric reserves the right to make any variation in technical specification to the equipment described, or to withdraw or replace products without prior notification or public announcement.

Tel:  
Fax:

