



# PCA-RP140GA

Power Inverter Heat Pump

R410A Ceiling Suspended System

Advanced inverter technology makes the Mr Slim Power Inverter the number one choice for improving comfort. They provide energy savings of up to 70% annually when compared to a previous non-inverter model. Operating noise has also been reduced thanks to improvements in fan design, while existing pipe work is reusable for easier maintenance and installation.

- **Indoor unit designed for direct ceiling suspension**
- **Flush to wall installation for concealment of service connections**
- **Electronic control includes learning defrost, fault finding diagnostics, low ambient fan speed control and anti-phase/single phase protection**



Pictures not to scale

## Product Details

### PCA-RP140GA Indoor Unit

Capacity (kW):	
Heating (Nominal) (Low - High)	16.00 (5.00 - 18.00)
Cooling (Nominal) (Low - High)	14.00 (5.50 - 15.30)
Heating (UK) (Low - High)	13.60 (4.25 - 15.30)
Cooling (UK) (Low - High)	12.60 (4.95 - 13.75)
SHF R410A (Nominal)	0.75
COP / EER (Nominal)	3.48 / 3.01
Energy Label Heating / Cooling	B / B
Width - mm	1620
Depth - mm	680
Height - mm	270
Weight - kg	45
Airflow (m <sup>3</sup> /min) - Lo-Mi1-Mi2-Hi	27-30-32-34
Noise (dBA) - Lo-Mi1-Mi2-Hi	42-44-46-48
Pipe Size Gas mm (in)	15.88 (5/8)
Pipe Size Liquid mm (in)	9.52 (3/8)
Electrical Supply	Fed by Outdoor Unit
Phase	Single
Fuse Rating (BS88) - HRC (A)	6
Interconnecting Cable No. Cores	4
Remote Controller Ref	PAR-21MAA

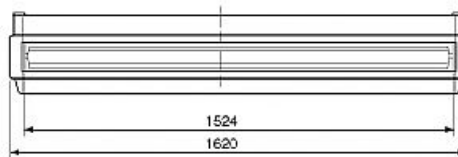
### PUHZ-RP140YHA2 Outdoor Unit

Width - mm	950
Depth - mm	330 + 30
Height - mm	1350
Weight - kg	130
Noise (dBA) (Heating / Cooling)	52 / 50
Electrical Supply	380-415v, 50Hz
Phase	3
Fuse Rating (BS88) - HRC (A)	16
System Power Input (kW) - Heating (Nominal)	4.6
System Power Input (kW) - Cooling (Nominal)	4.65
System Power Input (kW) - Heating (UK)	4.09
System Power Input (kW) - Cooling (UK)	3.95
Starting Current (A)	5
System Running Current (A) - Heating / Cooling	7.47 / 7.38
Mains Cable No. Cores	5
Max Pipe Length (m)	75
Max Height Difference (m)	30
Charge (kg) - 30m	5

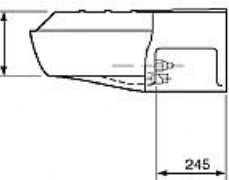
## Dimensions

### PCA-RP140GA

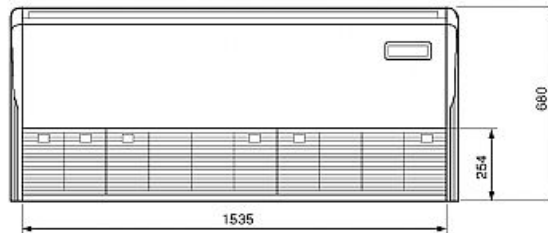
Front View >



Side View >

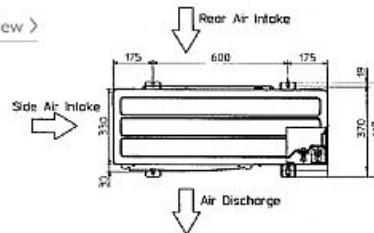


Lower View >

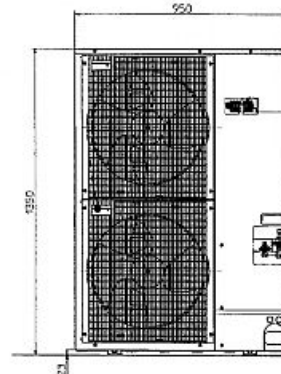


### PUHZ-RP140YHA2

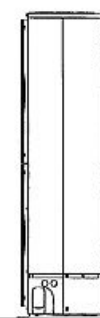
Upper View >



Front View >



Side View >



Telephone: 01707 282880

Email: [air.conditioning@meuk.mee.com](mailto:air.conditioning@meuk.mee.com) Website: <http://www.mitsubishielectric.co.uk/aircon>

Mitsubishi Electric reserves the right to make any variation in technical specification to the equipment described, or to withdraw or replace products without prior notification or public announcement.

Tel:  
Fax:

