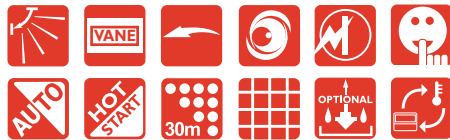


PCA-RP Heat Pump

R407c Ceiling Suspended System

New Models

- > Split system comprising of ceiling suspended indoor unit, outdoor unit and wall mounted control panel
- > Indoor unit designed for direct ceiling suspension
- > Flush to wall installation for concealment of service connections
- > Electronic control includes learning defrost, fault finding diagnostics, low ambient fan speed control and anti-phase/single phase protection



Technical Information >>

PCA-RP - INDOOR UNITS

MODEL REFERENCE		PCA-RP2GA	PCA-RP2.5GA	PCA-RP3GA	PCA-RP4GA	PCA-RP5GA	PCA-RP6GA
CAPACITY (kW)	Heating (nominal)	6.2	7.25	9.15	10.6	14.8	17.0
	Cooling (nominal)	5.35	6.6	7.45	9.6	12.3	14.2
	Heating (UK)	5.25	6.15	7.8	9.0	12.6	14.45
	Cooling (UK)	4.8	5.95	6.7	8.65	11.05	12.8
SHF (nominal)		0.72	0.75	0.73	0.76	0.77	0.74
AIRFLOW (m3/min)	Lo-Mi I-Mi2-Hi	10-11-12-13	14-15-16-18	14-15-16-18	20-21-23-25	27-30-32-34	27-30-32-34
PIPE SIZE mm(in)	Gas	15.88 (5/8")	15.88 (5/8")	15.88 (5/8")	19.05 (3/4")	19.05 (3/4")	19.05 (3/4")
	Liquid	9.52 (3/8")	9.52 (3/8")	9.52 (3/8")	9.52 (3/8")	9.52 (3/8")	9.52 (3/8")
NOISE (dBA)	Lo-Mi I-Mi2-Hi	37-38-40-42	37-39-41-43	37-39-41-43	40-41-43-45	41-43-45-46	42-44-46-48
DIMENSIONS (mm)	Width	1000	1310	1310	1310	1620	1620
	Depth	680	680	680	680	680	680
	Height	210	210	210	270	270	270
WEIGHT (kg)		27	34	34	37	43	45
ELECTRICAL SUPPLY		Fed by Outdoor Unit	Fed by Outdoor Unit	Fed by Outdoor Unit	Fed by Outdoor Unit	Fed by Outdoor Unit	Fed by Outdoor Unit
PHASE		Single	Single	Single	Single	Single	Single
FUSE RATING (BS88) – HRC (A)		6	6	6	6	6	6
INTERCONNECTING CABLE No. CORES		4	4	4	4	4	4

PUH-P - OUTDOOR UNITS

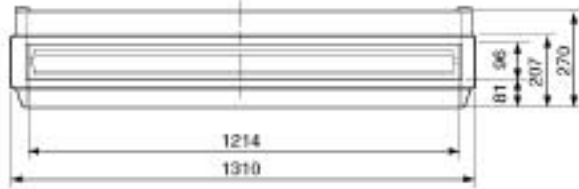
MODEL REFERENCE		PUH-P2VGAA	PUH-P2.5VGAA	PUH-P3VGAA/YGAA	PUH-P4VGAA/YGAA	PUH-P5YGAA	PUH-P6YGAA
NOISE (dBA)	Heating/Cooling	49 / 48	50 / 48	51 / 49	53 / 51	56 / 55	58 / 57
WEIGHT (kg)		71	82	82	96	122	122
DIMENSIONS (mm)	Width	900	900	900	900	1050	1050
	Depth	330 + 20	330 + 20	330 + 20	330 + 20	330 + 20	330 + 20
	Height	855	855	855	1260	1260	1260
ELECTRICAL SUPPLY		220-240v, 50Hz	220-240v, 50Hz	220-240v, 50Hz / 380-415v, 50Hz	220-240v, 50Hz / 380-415v, 50Hz	380-415v, 50Hz	380-415v, 50Hz
PHASE		Single	Single	Single / 3	Single / 3	3	3
SYSTEM POWER INPUT (kW)	Heating/Cooling (nominal)	2.36 / 2.35	2.66 / 2.62	3.48 / 3.37	3.81 / 3.62	5.11 / 4.91	6.24 / 5.89
	Heating/Cooling (UK)	2.10 / 2.00	2.37 / 2.23	3.10 / 2.86	3.39 / 3.08	4.55 / 4.17	5.55 / 5.01
STARTING CURRENT (A)		62	77	93 / 47	99 / 49	65.5	74
SYSTEM RUNNING CURRENT (A) Heating/Cooling		10.98 / 10.67	12.04 / 12.43	16.29/15.34 / 6.16/5.82	17.27/16.4 / 6.55/6.24	9.16 / 8.61	10.57 / 10.04
FUSE RATING (BS88) – HRC (A)		16	25	32 / 16	32 / 20	20	25
MAINS CABLE No. Cores		3	3	3 / 5	3 / 5	5	5
MAX PIPE LENGTH (m)		40	50	50	50	50	50
MAX HEIGHT DIFFERENCE (m)		40	50	50	50	50	50
CHARGE R407c (kg)		2.6	3.1	3.3	4.0	4.6	4.9

Notes: All units are charged to 20m (2-2.5) and 30m (3-6) pipe length.

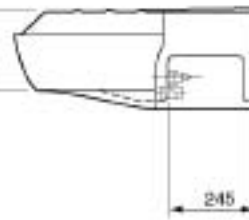
INDOOR UNIT PCA-RP4GA

For PCA-RP2-3GA schematics please see page 45

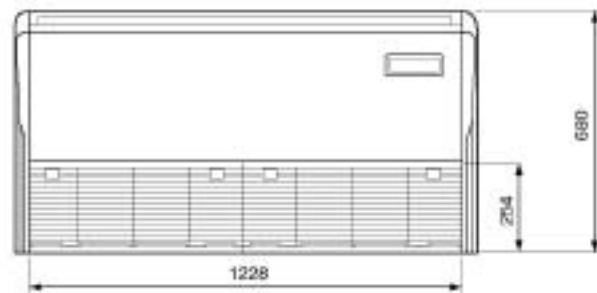
Front View >



Side View >

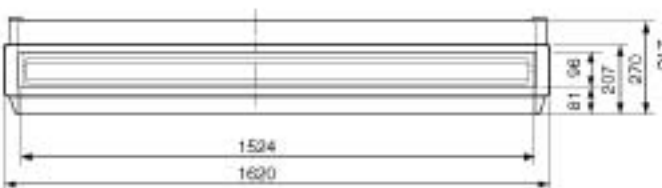


Lower View >

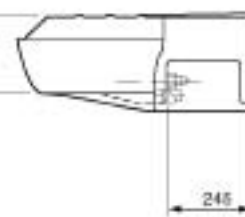


INDOOR UNIT PCA-RP5-6GA

Front View >



Side View >



Lower View >

