

HP DXE

Power Inverter Heat Pump Air Curtain System

In collaboration with Thermoscreens®, Mitsubishi Electric have developed a new range of air curtains that can be connected to our Power Inverter heat pumps, as opposed to the more traditional direct electric method associated with air curtains.

Key Features

- Reduced CO₂ emissions and run costs (up to 67%)
- 2.5 year payback period against equivalent electric systems
- Inverter technology (does not waste energy)
- Range of different sizes to suit every application
- Allows open door policy in retail outlets whilst being energy efficient
- Clean environment - protection from dust, fumes etc
- Comfortable climate for customers
- Easy to install and maintain
- New centrifugal fan
- New weather compensation option for further energy efficiency



HP DXE - RECESSED		HP1000R DXE	HP1500R DXE	HP1500R DXE	HP2000R DXE	HP2000R DXE	HP2000R DXE
CAPACITY (kW)	Heating (nominal)	8.3	13.8	13.8	15.9	15.9	21.0
	Cooling (nominal)	7.4	12.3	12.3	14.2	14.2	18.7
AIRFLOW MAX (l/s)		364	575	575	720	720	720
SOUND PRESSURE LEVEL AT 3m (dBA) Lo-Mi1-Hi		50-55-58	49-54-58	49-54-58	50-55-58	50-55-58	50-55-58
WEIGHT (kg)		52	75	75	93	93	93
DIMENSIONS (mm) Width x Depth x Height		1250 x 348 x 539	1750 x 348 x 539	1750 x 348 x 539	2340 x 348 x 539	2340 x 348 x 539	2340 x 348 x 539
	ELECTRICAL SUPPLY*1	220-240V, 50Hz	220-240V, 50Hz	220-240V, 50Hz	220-240V, 50Hz	220-240V, 50Hz	220-240V, 50Hz
PHASE*1		Single	Single	Single	Single	Single	Single
RUNNING CURRENT (A)*1		0.8	1.2	1.2	1.4	1.4	1.4
MAINS CABLE No. Cores*1		3	3	3	3	3	3
UNIFORMITY AT OUTLET (%)*2		90	92	92	90	90	90
MAX MOUNTING HEIGHT (m)		3.3	3.3	3.3	3.3	3.3	3.3

HP DXE - FREE STANDING		HP1000 DXE	HP1500 DXE	HP1500 DXE	HP2000 DXE	HP2000 DXE	HP2000 DXE
CAPACITY (kW)	Heating (nominal)	8.3	13.2	13.2	15.7	15.7	21.0
	Cooling (nominal)	7.4	11.8	11.8	14.0	14.0	18.7
AIRFLOW MAX (l/s)		364	575	575	720	720	720
SOUND PRESSURE LEVEL AT 3m (dBA) Lo-Mi1-Hi		50-55-58	49-54-58	49-54-58	50-55-58	50-55-58	50-55-58
WEIGHT (kg)		46	67	67	84	84	93
DIMENSIONS (mm) Width x Depth x Height		1300 x 468 x 306	1825 x 468 x 306	1825 x 468 x 306	2350 x 468 x 306	2350 x 468 x 306	2350 x 468 x 306
	ELECTRICAL SUPPLY*1	220-240V, 50Hz	220-240V, 50Hz	220-240V, 50Hz	220-240V, 50Hz	220-240V, 50Hz	220-240V, 50Hz
PHASE*1		Single	Single	Single	Single	Single	Single
RUNNING CURRENT (A)*1		0.8	1.2	1.2	1.4	1.4	1.4
MAINS CABLE No. Cores*1		3	3	3	3	3	3
UNIFORMITY AT OUTLET (%)*2		90	92	92	90	90	90
MAX MOUNTING HEIGHT (m)		3.3	3.3	3.3	3.3	3.3	3.3

HEAT PUMP OUTDOOR UNITS		PUHZ-ZRP71VHA	PUHZ-ZRP125VKA2	PUHZ-ZRP125YKA2 ^③ Three Phase	PUHZ-ZRP140VKA2	PUHZ-ZRP140YKA2 ^③ Three Phase	PUHZ-ZRP200YKA ^③ Three Phase
SOUND PRESSURE LEVEL (dBA) Heating/Cooling		48 / 47	52 / 50	52 / 50	52 / 50	52 / 50	62 / 59
SOUND POWER LEVEL (dBA) Cooling		67	70	70	70	70	-
WEIGHT (kg)		67	116	125	118	131	135
DIMENSIONS (mm) Width x Depth x Height		950 x 330 +30 x 943	1050 x 330 +40 x 1338	1050 x 330 +40 x 1338	1050 x 330 +40 x 1338	1050 x 330 +40 x 1338	1050 x 330 +40 x 1338
	ELECTRICAL SUPPLY	220-240V, 50Hz	220-240V, 50Hz	380-415V, 50Hz	220-240V, 50Hz	380-415V, 50Hz	380-415V, 50Hz
PHASE		Single	Single	Three	Single	Three	Three
STARTING CURRENT (A)		5	5	5	5	5	5
FUSE RATING (BS88) - HRC (A)		25	32	16	40	16	20
INTERCONNECTING CABLE		2 Core	2 Core	2 Core	2 Core	2 Core	2 Core
MAX PIPE LENGTH (m)		50	75	75	75	75	100
MAX HEIGHT DIFFERENCE (m)		30	30	30	30	30	30
CHARGE R410A (kg) - 30m		3.5	5.0	5.0	5.0	5.0	5.0



thermoscreens.

Accessories

Outdoor Units

PAC-SG59SG

Air outlet guide for PUHZ-ZRP71VHA

PAC-SH96SG

Air outlet guide for PUHZ-ZRP125-140VKA(YKA)

System Control Units

PAC-SF83MA

A/M-NET adaptor for PUHZ-ZRP71-140VHA(VKA/YKA)

PAR-31MAA

Remote controller

PAR-W21MAA

Remote controller

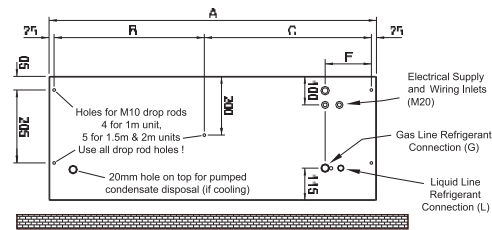
MELCOBEMS MINI

Modbus / BACnet Interface

Product Dimensions

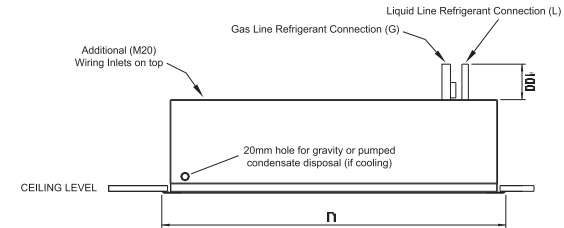
HP1000/1500/2000R DXE

Front View

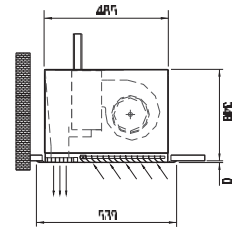


	HP1000R DXE	HP1500R DXE	HP2000R DXE
A (mm)	1750	1750	2340
B (mm)	-	774	1129
C (mm)	-	970	1161
D (mm)	1303	1803	2393
E (mm)	170	166	189
G	3/8 in.	3/8 in.	7/8 in.
I	1/2 in.	1/2 in.	3/4 in.
Full-Cut in Ceiling	1250	1750	2340
Width (mm)	485	485	485

Upper View



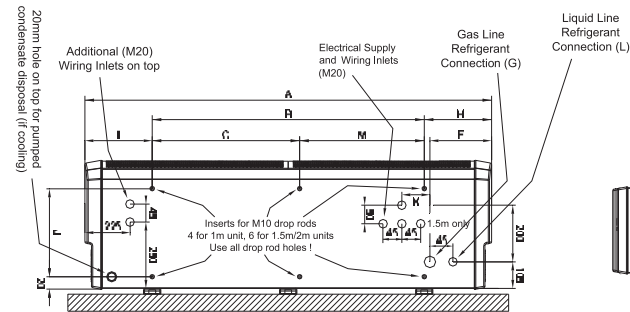
Side View



Product Dimensions

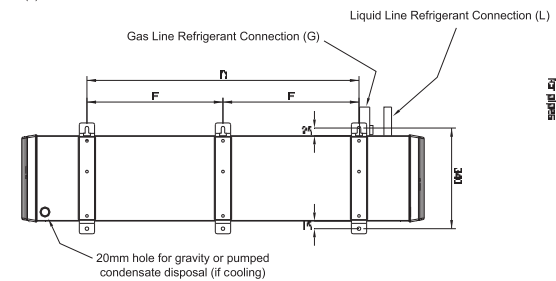
HP1000/1500/2000 DXE

Front View



	HP1000DXE	HP1500DXE	HP2000DXE
A (mm)	1900	1825	2450
B (mm)	805	1225	1795
C (mm)	-	855	918
D (mm)	898	1998	1908
E (mm)	-	898	952
F (mm)	182	222	268
G	3/8 in.	3/8 in.	3/8 in.
H (mm)	442	999	299
I (mm)	259	267	298
J (mm)	999	999	998
K (mm)	80	85	80
L	1/2 in.	1/2 in.	3/4 in.
M (mm)	-	570	875

Upper View



Side View

