



MSZ-EF25VES

Inverter Heat Pump

R410A Wall Mounted System

The new Zen MSZ-EF series is a stylish, silver wall mounted system. Featuring the new Nano-Platinum filter system, these models also offer industry leading noise levels and have a distinctively styled front panel that not only looks appealing but also helps to make cleaning of the unit easier.

- **Anti-Allergy Enzyme Filter is optional**



Pictures not to scale

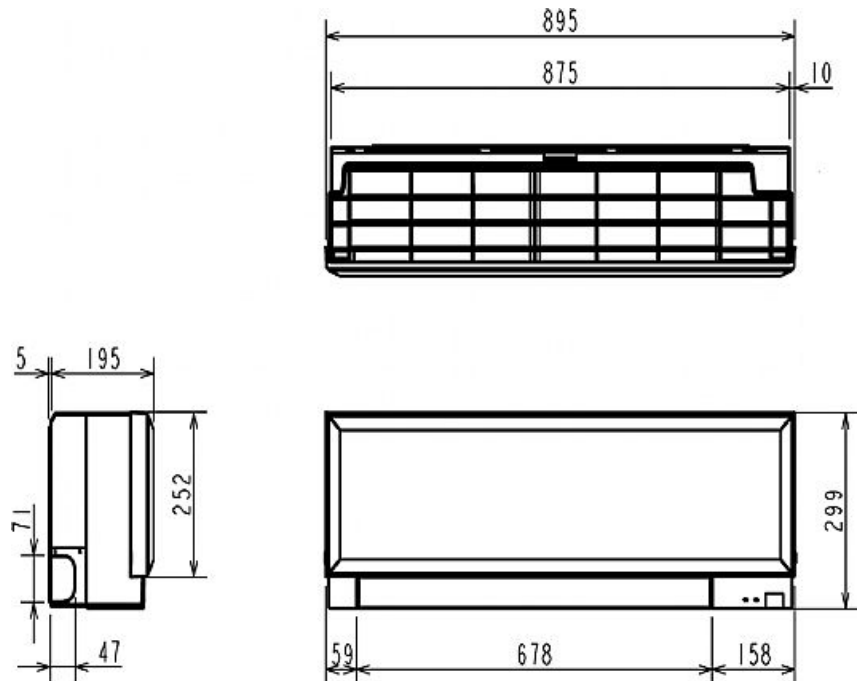
Product Details

MSZ-EF25VES Indoor Unit	
Capacity (kW):	
Heating (Nominal) (Low - High)	3.20 (1.10 - 4.20)
Cooling (Nominal) (Low - High)	2.50 (1.20 - 3.40)
Heating (UK) (Low - High)	2.65 (0.90 - 3.50)
Cooling (UK) (Low - High)	2.50 (1.20 - 3.35)
SHF R410A (Nominal)	0.92
COP / EER (Nominal)	4.57 / 4.59
Energy Label Heating / Cooling	A / A
Width - mm	895
Depth - mm	195
Height - mm	299
Weight - kg	11.5
Airflow (m ³ /min) (Heating /Cooling) - Lo-Mi1-Mi2-Hi-SupHi	4-4.6-6.2-8.9-11.9 / 4-4.6-6.3-8.3-10.5
Noise (dBA) (Heating /Cooling) - Lo-Mi1-Mi2-Hi-SupHi	21-24-29-37-45 / 21-23-29-36-42
Pipe Size Gas mm (in)	9.52 (3/8)
Pipe Size Liquid mm (in)	6.35 (1/4)
Electrical Supply	Fed by Outdoor Unit
Phase	Single
Fuse Rating (BS88) - HRC (A)	6
Interconnecting Cable No. Cores	4

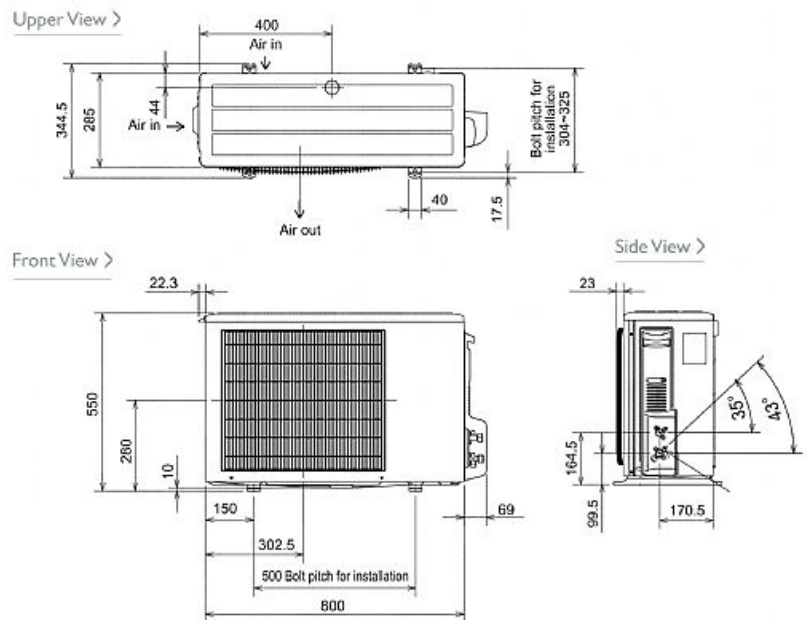
MUZ-EF25VE Outdoor Unit	
Width - mm	800
Depth - mm	285
Height - mm	550
Weight - kg	30
Noise (dBA) (Heating /Cooling)	48 / 47
Electrical Supply	220-240v, 50Hz
Phase	Single
Fuse Rating (BS88) - HRC (A)	10
SystemPower Input (kW) - Heating (Nominal)	0.7
SystemPower Input (kW) - Cooling (Nominal)	0.545
SystemPower Input (kW) - Heating (UK)	0.637
SystemPower Input (kW) - Cooling (UK)	0.436
Starting Current (A)	3.5
SystemRunning Current (A) - Heating / Cooling	3.5 / 2.9
Mains Cable No. Cores	3
Max Pipe Length (m)	20
Max Height Difference (m)	12
Charge R410A (kg) - 7m	0.8

Dimensions

MSZ-EF25VES



MUZ-EF25VE



Telephone: 01707 282880

Email: air.conditioning@meuk.mee.com Website: <http://www.mitsubishielectric.co.uk/aircon>

Tel:
Fax:

Mitsubishi Electric reserves the right to make any variation in technical specification to the equipment described, or to withdraw or replace products without prior notification or public announcement.

