



SPLIT-TYPE, AIR CONDITIONERS  
SPLIT-TYPE, HEAT PUMP AIR CONDITIONERS

**NOTE:** This service Manual covers only change points.  
 (MSC-07/09/12RV-**E1**) → MSC-07/09/12RV-**E2**)  
 (MU-07/09/12RV-**E1**) → MU-07/09/12RV-**E2**)  
 (MUH-07/09/12RV-**E1**) → MUH-07/09/12RV-**E2**)  
 (MUX-10/18/24RV-**E1**) → MUX-10/18/24RV-**E2**)  
 (MXZ-18RV-**E1**) → MXZ-18RV-**E2**)  
 Please refer to the Service Manual OB227 REVISED EDITION-B for unchanged contents.

No. OB252

# SERVICE MANUAL

## Wireless type Models

- |                                  |                              |
|----------------------------------|------------------------------|
| <b>MSC-07RV</b> - <b>E2</b> (WH) | ▪ <b>MU-07RV</b> - <b>E2</b> |
| <b>MSC-09RV</b> - <b>E2</b> (WH) | ▪ <b>MU-09RV</b> - <b>E2</b> |
| <b>MSC-12RV</b> - <b>E2</b> (WH) | ▪ <b>MU-12RV</b> - <b>E2</b> |

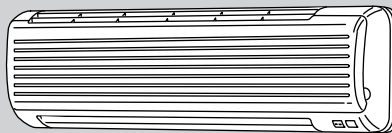
- |                                  |                               |
|----------------------------------|-------------------------------|
| <b>MSC-07RV</b> - <b>E2</b> (WH) | ▪ <b>MUH-07RV</b> - <b>E2</b> |
| <b>MSC-09RV</b> - <b>E2</b> (WH) | ▪ <b>MUH-09RV</b> - <b>E2</b> |
| <b>MSC-12RV</b> - <b>E2</b> (WH) | ▪ <b>MUH-12RV</b> - <b>E2</b> |

## Multi system type

- |                                  |                               |
|----------------------------------|-------------------------------|
| <b>MSC-07RV</b> - <b>E2</b> (WH) | ▪ <b>MUX-10RV</b> - <b>E2</b> |
| <b>MSC-09RV</b> - <b>E2</b> (WH) | ▪ <b>MUX-18RV</b> - <b>E2</b> |
| <b>MSC-12RV</b> - <b>E2</b> (WH) | ▪ <b>MUX-24RV</b> - <b>E2</b> |

## Inverter controlled multi system type

- **MXZ-18RV** - **E2**



- MSC-07RV - **E2**
- MSC-09RV - **E2**
- MSC-12RV - **E2**



## CONTENTS

1. TECHNICAL CHANGES .....	2
2. PART NAMES AND FUNCTIONS.....	2
3. PARTS LIST .....	3



# 1

## TECHNICAL CHANGES

**MSC-07RV -E1** → **MSC-07RV -E2**

**MSC-09RV -E1** → **MSC-09RV -E2**

**MSC-12RV -E1** → **MSC-12RV -E2**

- Indoor electronic control P.C. board has changed.
- COOL ONLY / COOL & HEAT two-way remote controller is provided in the indoor unit accessory.

**MU-07RV -E1** → **MU-07RV -E2**

**MU-09RV -E1** → **MU-09RV -E2**

**MU-12RV -E1** → **MU-12RV -E2**

- Contactor(52C) has changed.
- Remote controller is unprovided in the outdoor unit accessory.

**MUH-07RV -E1** → **MUH-07RV -E2**

**MUH-09RV -E1** → **MUH-09RV -E2**

**MUH-12RV -E1** → **MUH-12RV -E2**

**MUX-10RV -E1** → **MUX-10RV -E2**

**MUX-18RV -E1** → **MUX-18RV -E2**

**MUX-24RV -E1** → **MUX-24RV -E2**

**MXZ-18RV -E1** → **MXZ-18RV -E2**

- Remote controller is unprovided in the outdoor unit accessory.

**COOL ONLY REMOTE CONTROLLER** → **Two-way REMOTE CONTROLLER**

**COOL&HEAT REMOTE CONTROLLER** → **Two-way REMOTE CONTROLLER**

- Both of COOL ONLY and COOL & HEAT remote controller are unified into a two-way remote controller.
- FAN mode operation is available in COOL ONLY unit. In this case the set room temperature will be displayed on the remote controller, however, the room temperature can not be controlled by remote controller button. HEAT operation is available in only HEAT & COOL type unit.

### Reference

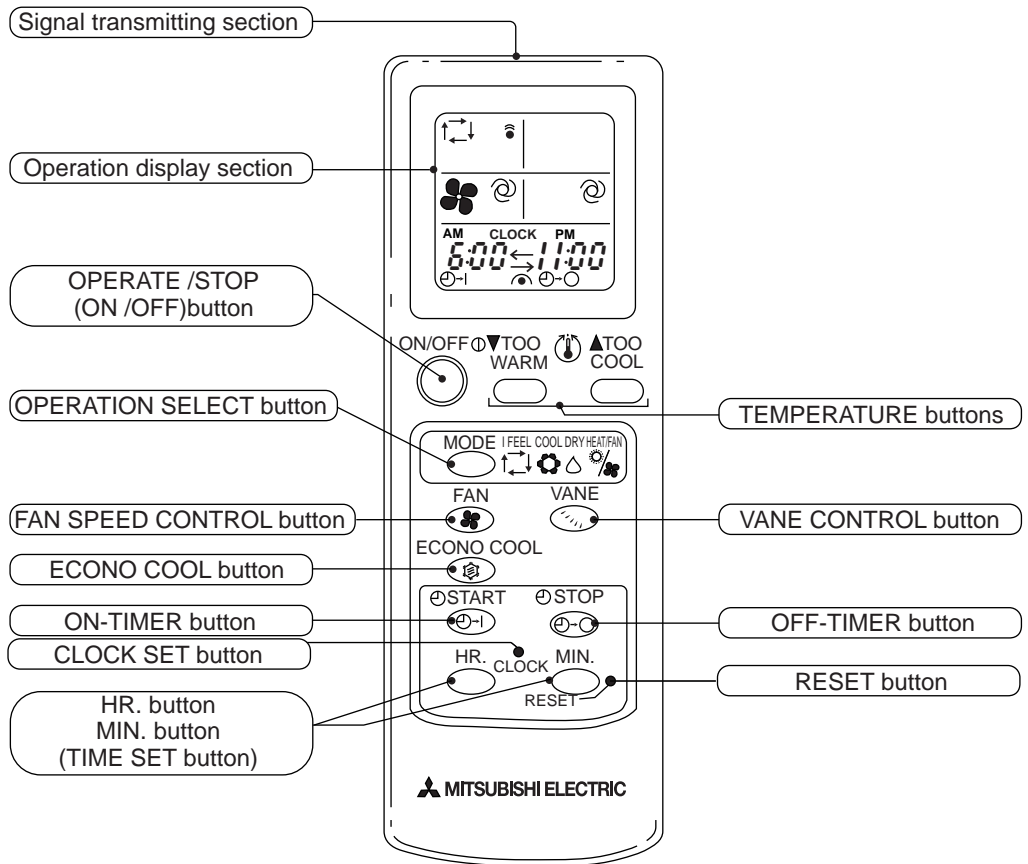
Model	REMOTE CONTROLLER		
	COOL ONLY	COOL & HEAT	TWO-WAY
MS-07/09/12RV-E1	○	×	×
MSH-07/09/12RV-E1	×	○	○
MS-07/09/12RV-E2	○	○*	○
MSH-07/09/12RV-E2	×	○	○

\* When HEAT mode is selected by the remote controller of COOL & HEAT type, the unit will operate in FAN mode.

MSC-07RV - E2

MSC-09RV - E2

MSC-12RV - E2

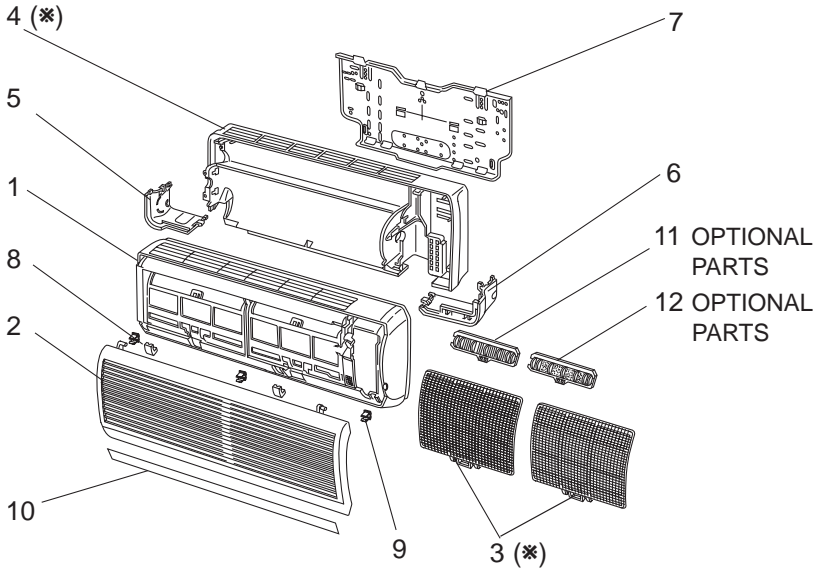


# 3

# PARTS LIST

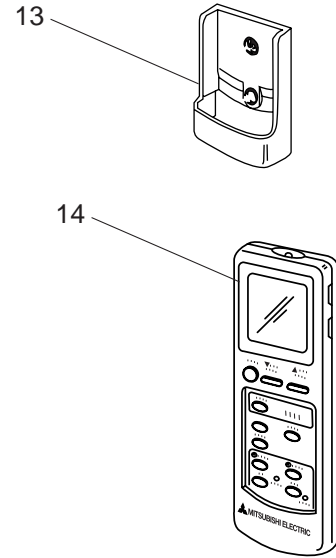
MSC-07RV -E1 (WH) MSC-07RV -E2 (WH)  
 MSC-09RV -E1 (WH) MSC-09RV -E2 (WH)  
 MSC-12RV -E1 (WH) MSC-12RV -E2 (WH)

### 3-1. INDOOR UNIT STRUCTURAL PARTS



(\*)These figures show about MSC-12RV.

### 3-2. ACCESSORY PART



### 3-1. INDOOR UNIT STRUCTURAL PARTS

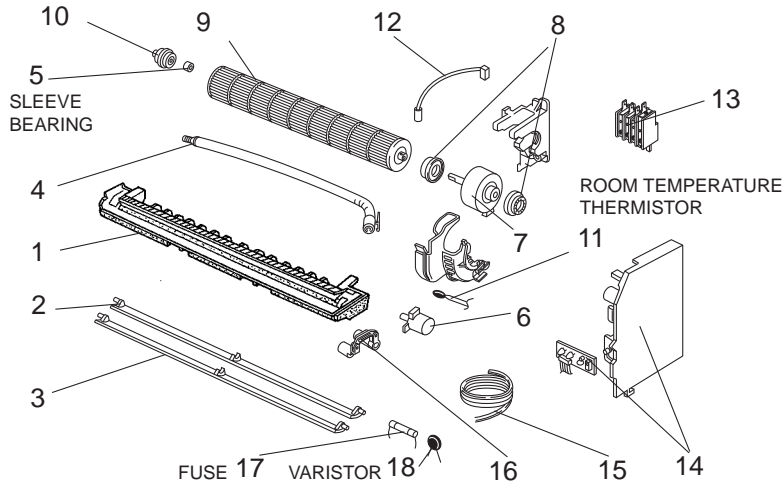
No.	Part No.	Part Name	Symbol in Wiring Diagram	Q'ty/unit						Remarks
				MSC-07RV		MSC-09RV		MSC-12RV		
				-E1 (WH)	-E2 (WH)	-E1 (WH)	-E2 (WH)	-E1 (WH)	-E2 (WH)	
1	E02 424 000	FRONT PANEL(WH)		1	1	1	1	1	1	
2	E02 424 010	GRILLE(WH)		1	1	1	1	1	1	
3	E02 408 100	AIR FILTER		2	2	2	2			
	E02 410 100	AIR FILTER						2	2	
4	E02 409 234	BOX(WH)		1	1	1	1			
	E02 411 234	BOX(WH)						1	1	
5	E02 409 976	CORNER BOX (LEFT)		1	1	1	1	1	1	
6	E02 409 975	CORNER BOX (RIGHT)		1	1	1	1	1	1	
7	E02 408 970	INSTALLATION PLATE		1	1	1	1	1	1	
8	E02 409 067	SCREW CAP(WH)		2	2	2	2	2	2	2PCS/SET
9	E02 408 142	CATCH		3	3	3	3	3	3	3PCS/SET
10	E02 424 020	DECORATION COVER		1	1	1	1	1	1	
11	_____	AIR CLEANING FILTER		1	1	1	1	1	1	MAC-1300FT
12	_____	DEODORIZING FILTER		1	1	1	1	1	1	MAC-1800DF

### 3-2. ACCESSORY PART

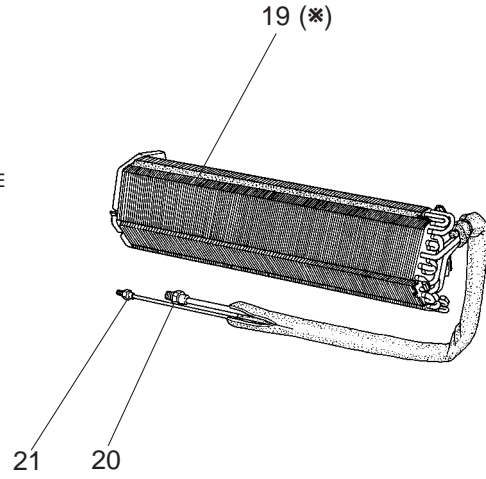
13	E02 141 083	REMOTE CONTROLLER HOLDER		1	1	1	1	1	1	
14	E02 504 426	REMOTE CONTROLLER			1		1		1	

MSC-07RV -E1 (WH) MSC-07RV -E2 (WH)  
 MSC-09RV -E1 (WH) MSC-09RV -E2 (WH)  
 MSC-12RV -E1 (WH) MSC-12RV -E2 (WH)

### 3-3. INDOOR UNIT ELECTRICAL PARTS



### 3-4. INDOOR UNIT HEAT EXCHANGER



(\* )These figures show about MSC-12RV.

### 3-3. INDOOR UNIT ELECTRICAL PARTS

No.	Part No.	Part Name	Symbol in Wiring Diagram	Q'ty/unit						Remarks
				MSC-07RV		MSC-09RV		MSC-12RV		
				-E1 (WH)	-E2 (WH)	-E1 (WH)	-E2 (WH)	-E1 (WH)	-E2 (WH)	
1	E02 409 235	NOZZLE (WH)		1	1	1	1	1	1	
2	E02 409 040	VANE UPPER (WH)		1	1	1	1	1	1	
3	E02 409 041	VANE LOWER (WH)		1	1	1	1	1	1	
4	E02 408 702	DRAIN HOSE		1	1	1	1	1	1	
5	E02 001 504	SLEEVE BEARING		1	1	1	1	1	1	
6	E02 408 303	VANE MOTOR	MV	1	1	1	1	1	1	
7	E02 151 300	INDOOR FAN MOTOR	MF	1	1	1	1	1	1	RC4V19-□□
8	E02 151 505	FAN MOTOR RUBBER MOUNT		2	2	2	2	2	2	2PCS/SET
9	E02 408 302	LINE FLOW FAN		1	1	1	1	1	1	
10	E02 408 509	BEARING MOUNT		1	1	1	1	1	1	
11	E02 408 308	ROOM TEMPERATURE THERMISTOR	RT11	1	1	1	1	1	1	
12	E02 408 307	INDOOR COIL THERMISTOR	RT12	1	1	1	1	1	1	
13	E02 424 375	TERMINAL BLOCK	TB	1	1	1	1	1	1	
14	E02 424 452	ELECTRONIC CONTROL P.C.BOARD		1						AUTO RESTART
	E02 504 452	ELECTRONIC CONTROL P.C.BOARD			1					AUTO RESTART
	E02 425 452	ELECTRONIC CONTROL P.C.BOARD				1				AUTO RESTART
	E02 505 452	ELECTRONIC CONTROL P.C.BOARD					1			AUTO RESTART
	E02 426 452	ELECTRONIC CONTROL P.C.BOARD						1		AUTO RESTART
	E02 506 452	ELECTRONIC CONTROL P.C.BOARD							1	AUTO RESTART
15	E02 424 395	POWER SUPPLY CORD		1	1	1	1	1	1	
16	E02 408 034	VANE MOTOR SUPPORT SET		1	1	1	1	1	1	
17	E02 127 382	FUSE	F11	1	1	1	1	1	1	3.15A
18	E02 336 385	VARISTOR	NR11	1	1	1	1	1	1	

### 3-4. INDOOR UNIT HEAT EXCHANGER

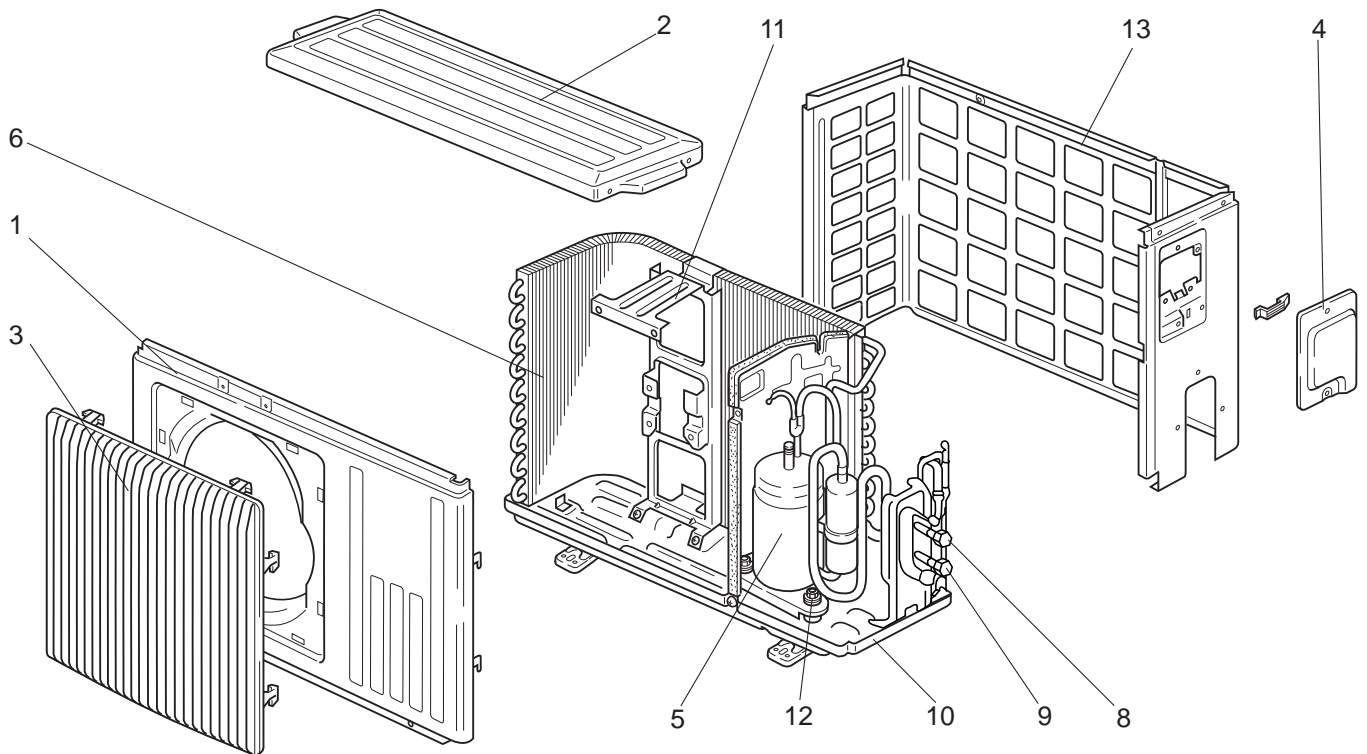
19	E02 408 620	INDOOR HEAT EXCHANGER		1	1	1	1			
	E02 410 620	INDOOR HEAT EXCHANGER						1		
	E02 515 620	INDOOR HEAT EXCHANGER							1	
20	E02 151 666	UNION(GAS)		1	1	1	1			φ9.52
	E02 155 666	UNION(GAS)						1	1	φ12.7
21	E02 151 667	UNION(LIQUID)		1	1	1	1	1	1	φ6.35

### 3-5. OUTDOOR UNIT STRUCTURAL PARTS

MU-07RV -E1 MU-07RV -E2

MU-09RV -E1 MU-09RV -E2

MU-12RV -E1 MU-12RV -E2

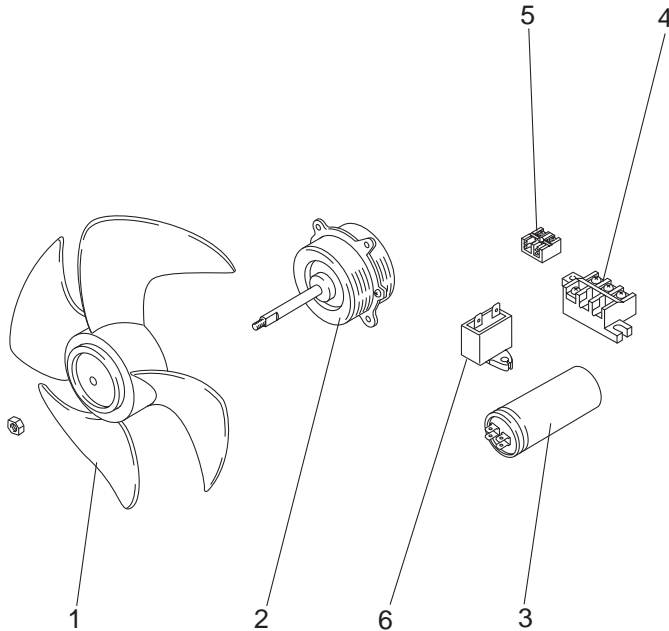


Part number that is circled is not shown in the illustration.

No.	Part No.	Part name	Symbol in Wiring Diagram	Q'ty/unit						Remarks
				MU-07RV		MU-09RV		MU-12RV		
				-E1	-E2	-E1	-E2	-E1	-E2	
1	E02 336 232	CABINET		1	1	1	1	1	1	
2	E02 336 297	TOP PANEL		1	1	1	1	1	1	
3	E02 336 521	GRILLE(OUT)		1	1	1	1	1	1	
4	E02 336 245	SERVICE PANEL		1	1	1	1	1	1	
5	E02 437 900	COMPRESSOR	MC	1	1					RH-135VGCT
	E02 438 900	COMPRESSOR	MC			1	1			RH-145VGCT
	E02 141 900	COMPRESSOR	MC					1	1	RH-231VHAT
6	E02 336 630	OUTDOOR HEAT EXCHANGER		1	1	1	1	1	1	
7	E02 339 936	CAPILLARY TUBE		1	1	1	1			φ3.0xφ1.4x600
	E02 412 936	CAPILLARY TUBE						1	1	φ3.0xφ1.6x600
8	E02 339 662	STOP VALVE(LIQUID)		1	1	1	1	1	1	φ6.35
9	E02 339 661	STOP VALVE(GAS)		1	1	1	1			φ9.52
	E02 340 661	STOP VALVE(GAS)						1	1	φ12.7
10	E02 339 290	BASE		1	1	1	1			
	E02 340 290	BASE						1	1	
11	E02 336 515	MOTOR SUPPORT		1	1	1	1	1	1	
12	E02 336 506	COMPRESSOR RUBBER SET		3	3	3	3			3RUBBERS/SET
	E02 075 506	COMPRESSOR RUBBER SET						3	3	3RUBBERS/SET
13	E02 339 233	BACK PANEL		1	1	1	1	1	1	

MU-07RV -E1 MU-07RV -E2  
 MU-09RV -E1 MU-09RV -E2  
 MU-12RV -E1 MU-12RV -E2

### 3-6. OUTDOOR UNIT FUNCTIONAL PARTS AND ELECTRICAL PARTS



### 3-7. REMOTE CONTROLLER



### 3-6. OUTDOOR UNIT FUNCTIONAL PARTS AND ELECTRICAL PARTS

Part number that are circled are not shown in the illustration.

No.	Part No.	Part name	Symbol in Wiring Diagram	Q'ty/unit						Remarks
				MU-07RV		MU-09RV		MU-12RV		
				-E1	-E2	-E1	-E2	-E1	-E2	
1	E02 336 501	PROPELLER FAN		1	1	1	1	1	1	
2	E02 437 301	OUTDOOR FAN MOTOR	MF	1	1	1	1			RA6V23-□□
	E02 439 301	OUTDOOR FAN MOTOR	MF					1	1	RA6V33-□□
3	E02 085 353	COMPRESSOR CAPACITOR	C1	1	1	1	1			25 $\mu$ F /440V
	E02 079 353	COMPRESSOR CAPACITOR	C1					1	1	30 $\mu$ F /440V
4	E02 437 374	TERMINAL BLOCK	TB1	1	1	1	1	1	1	
5	E02 438 374	TERMINAL BLOCK	TB2	1	1	1	1	1	1	
6	E02 095 350	OUTDOOR FAN CAPACITOR	C2	1	1	1	1	1	1	1.5 $\mu$ F /440V
⑦	E02 001 340	CONTACTOR	52C	1		1		1		
	E02 466 340	CONTACTOR	52C		1		1		1	
⑧	E02 095 382	FUSE	F	1	1	1	1	1	1	250V2A
⑨	E02 128 383	SURGE ABSORBER	DSAR	1	1	1	1	1	1	

### 3-7. REMOTE CONTROLLER

10	E02 408 426	REMOTE CONTROLLER		1		1		1		
----	-------------	-------------------	--	---	--	---	--	---	--	--

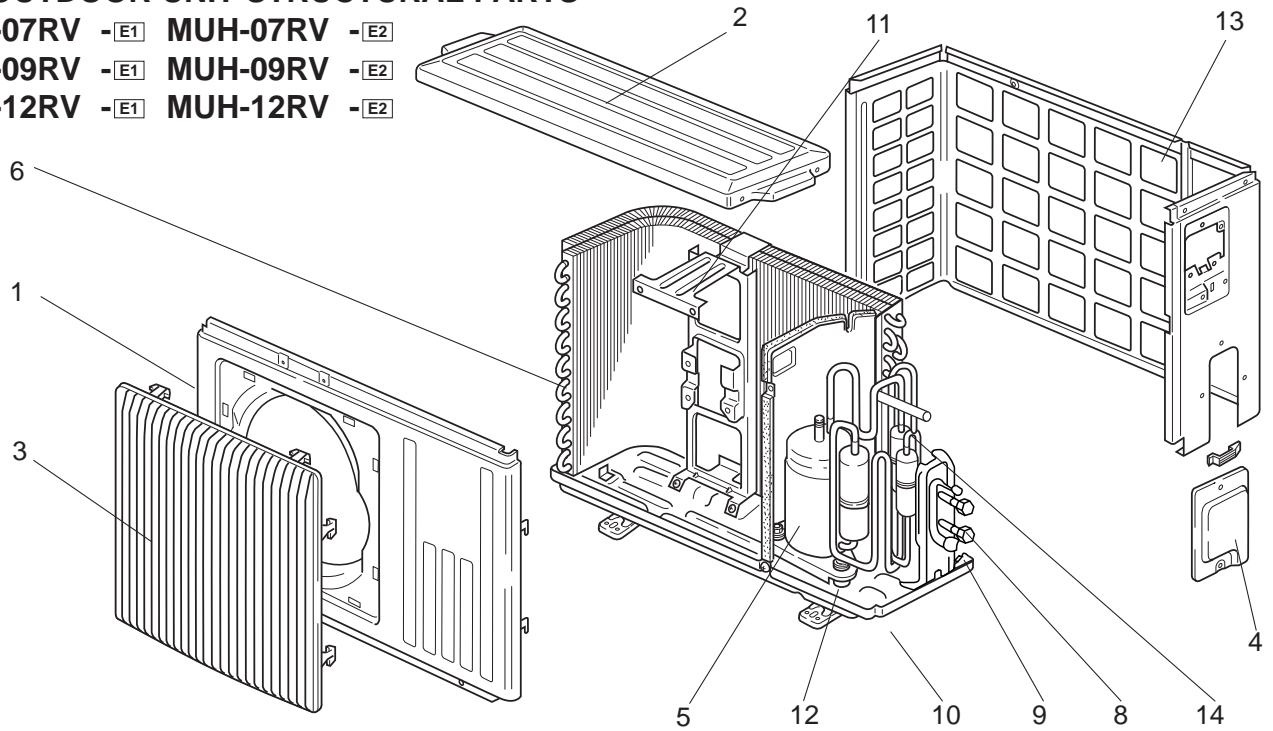


### 3-8. OUTDOOR UNIT STRUCTURAL PARTS

MUH-07RV -E1 MUH-07RV -E2

MUH-09RV -E1 MUH-09RV -E2

MUH-12RV -E1 MUH-12RV -E2



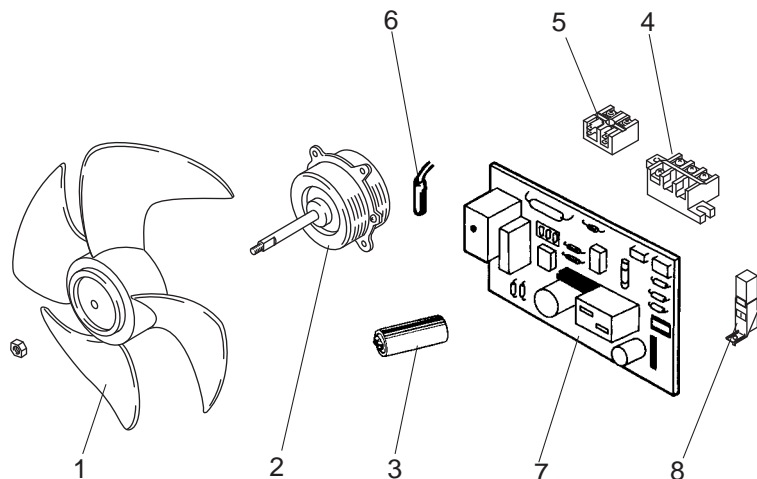
Part number that are circled are not shown in the illustration.

No.	Part No.	Part name	Symbol in Wiring Diagram	Q'ty/unit						Remarks
				MUH-07RV		MUH-09RV		MUH-12RV		
				-E1	-E2	-E1	-E2	-E1	-E2	
1	E02 336 232	CABINET		1	1	1	1	1	1	
2	E02 336 297	TOP PANEL		1	1	1	1	1	1	
3	E02 336 521	GRILLE(OUT)		1	1	1	1	1	1	
4	E02 336 245	SERVICE PANEL		1	1	1	1	1	1	
5	E02 164 900	COMPRESSOR	MC	1	1					RH-135VGHT
	E02 128 900	COMPRESSOR	MC			1	1			RH-174VGHT
	E02 141 900	COMPRESSOR	MC					1	1	RH-231VHAT
6	E02 440 630	OUTDOOR HEAT EXCHANGER		1	1	1	1			
	E02 442 630	OUTDOOR HEAT EXCHANGER						1	1	
7	E02 159 936	CAPILLARY TUBE		2	2	2	2			φ3.0xφ1.4x800
	E02 156 936	CAPILLARY TUBE						2	2	φ3.0xφ1.4x500
	E02 339 936	CAPILLARY TUBE		1	1					φ3.0xφ1.4x600
	E02 441 936	CAPILLARY TUBE				1	1			φ3.0xφ1.4x550
	E02 412 936	CAPILLARY TUBE		1	1					φ3.0xφ1.6x600
	E02 134 937	CAPILLARY TUBE				1	1			φ3.0xφ1.6x400
	E02 134 936	CAPILLARY TUBE						1	1	φ3.0xφ1.6x700
	E02 442 936	CAPILLARY TUBE						1	1	φ3.0xφ1.8x300
8	E02 139 662	STOP VALVE(LIQUID)		1	1	1	1	1	1	φ6.35
9	E02 339 661	STOP VALVE(GAS)		1	1	1	1			φ9.52
	E02 340 661	STOP VALVE(GAS)						1	1	φ12.7
10	E02 339 290	BASE		1	1	1	1			
	E02 340 290	BASE						1	1	
11	E02 336 515	MOTOR SUPPORT		1	1	1	1			
	E02 442 515	MOTOR SUPPORT						1	1	
12	E02 336 506	COMPRESSOR RUBBER SET		3	3	3	3			3RUBBERS/SET
	E02 075 506	COMPRESSOR RUBBER SET						3	3	3RUBBERS/SET
13	E02 440 233	BACK PANEL		1	1	1	1	1	1	
14	E02 444 961	REVERSING VALVE		1	1	1	1	1	1	
15	E02 154 642	CHECK VALVE		1	1	1	1	1	1	

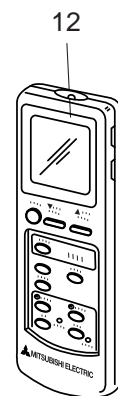
MUH-07RV -E1 MUH-07RV -E2  
 MUH-09RV -E1 MUH-09RV -E2  
 MUH-12RV -E1 MUH-12RV -E2

### 3-9. OUTDOOR UNIT

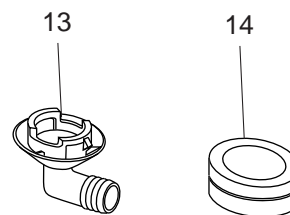
#### FUNCTIONAL PARTS AND ELECTRICAL PARTS



### 3-10. REMOTE CONTROLLER



### 3-11. ACCESSORY PARTS



### 3-9. OUTDOOR UNIT FUNCTIONAL PARTS AND ELECTRICAL PARTS

Part number that are circled are not shown in the illustration.

No.	Part No.	Part name	Symbol in Wiring Diagram	Q'ty/unit						Remarks
				MUH-07RV		MUH-09RV		MUH-12RV		
				-E1	-E2	-E1	-E2	-E1	-E2	
1	E02 336 501	PROPELLER FAN		1	1	1	1	1	1	
2	E02 440 301	OUTDOOR FAN MOTOR	MF	1	1	1	1			RA6V23-□□
	E02 442 301	OUTDOOR FAN MOTOR	MF					1	1	RA6V33-□□
3	E02 085 353	COMPRESSOR CAPACITOR	C1	1	1	1	1			25 $\mu$ F /440V
	E02 079 353	COMPRESSOR CAPACITOR	C1					1	1	30 $\mu$ F /440V
4	E02 437 374	TERMINAL BLOCK	TB1	1	1	1	1	1	1	
5	E02 440 374	TERMINAL BLOCK	TB2	1	1	1	1	1	1	
6	E02 289 310	DEFROST THERMISTOR	RT61	1	1	1	1			
	E02 440 310	DEFROST THERMISTOR	RT61					1	1	
7	E02 440 451	DEICER P.C. BOARD		1	1	1	1	1	1	
8	E02 128 383	SURGE ABSORBER	DSAR	1	1	1	1	1	1	
⑨	E02 440 490	REVERSING VALVE COIL	21S4	1	1	1	1	1	1	
⑩	E02 095 382	FUSE	F61	1	1	1	1	1	1	250V 2A
⑪	E02 085 385	VARISTOR	NR61	1	1	1	1	1	1	

### 3-10. REMOTE CONTROLLER

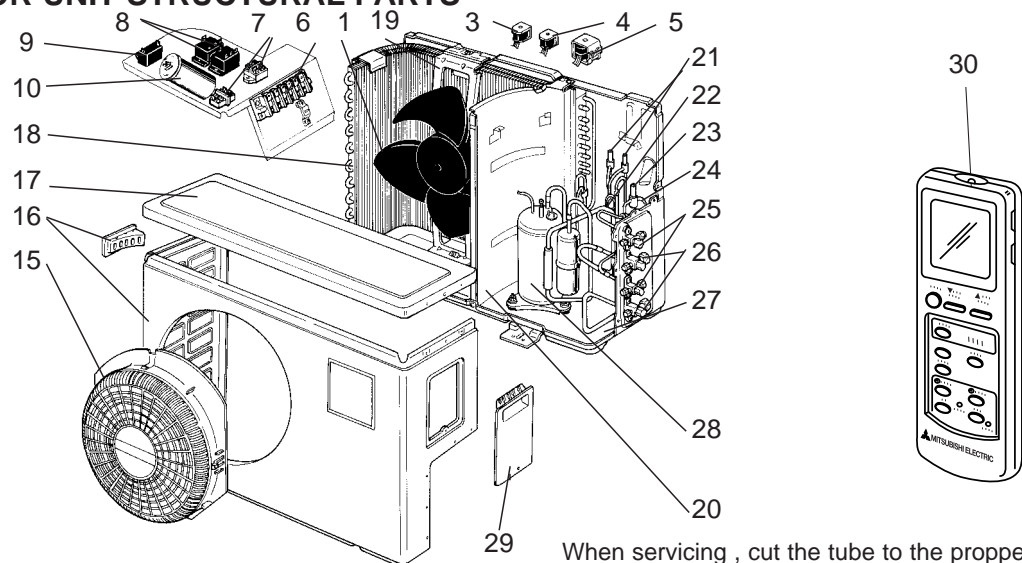
12	E02 430 426	REMOTE CONTROLLER		1		1		1		
----	-------------	-------------------	--	---	--	---	--	---	--	--

### 3-11. ACCESSORY PARTS

13	E02 440 704	DRAIN SOCKET		1		1		1		
	E02 444 704	DRAIN SOCKET			1		1		1	
14	E02 440 705	DRAIN CAP		2	2	2	2	2	2	

MUX-10RV -E1 MUX-10RV -E2  
**3-12. OUTDOOR UNIT STRUCTURAL PARTS**

**3-13. REMOTE CONTROLLER**



When servicing , cut the tube to the proper length as shown in the REFRIGERANT SYSTEM DIAGRAM.

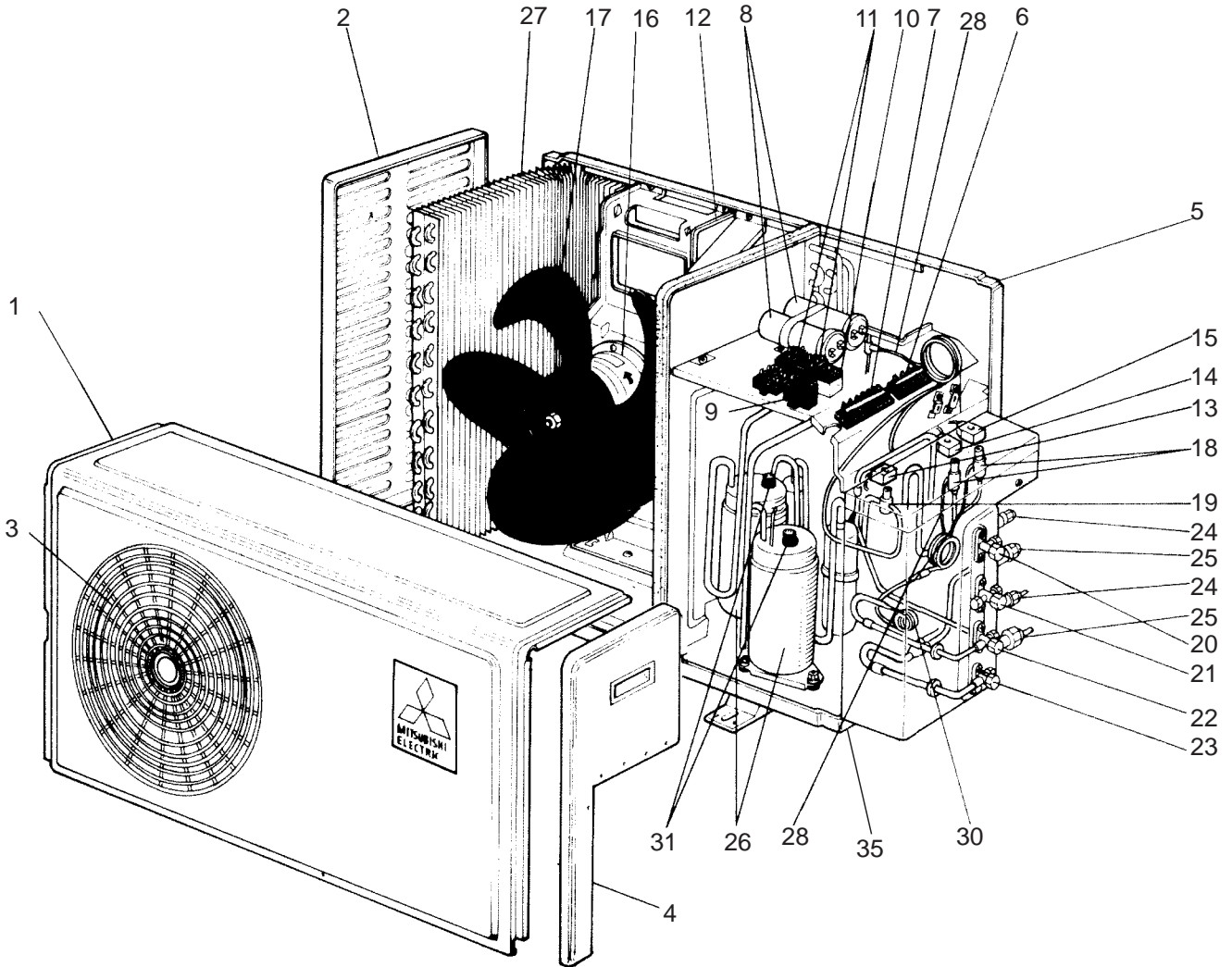
**3-12. OUTDOOR UNIT STRUCTURAL PARTS**

No.	Parts No.	Parts Name	Symbol in Wiring Diagram	Q'ty / unit		Remarks
				MUX-10RV		
				E1	E2	
1	M21 601 501	PROPELLER FAN		1	1	
2	T2W E42 301	OUTDOOR FAN MOTOR	MF	1	1	RA6V22-□□
3	T2W E42 388	BYPASS VALVE SOLENOID COIL A	21R1	1	1	
4	T2W E39 389	BYPASS VALVE SOLENOID COIL B	21R2	1	1	
5	T2W E42 389	BYPASS VALVE SOLENOID COIL	21R	1	1	
6	T2W E60 375	TERMINAL BLOCK	TB	1	1	
7	M21 370 378	TERMINAL BLOCK	TB	2	2	L N
8	T2W 459 342	COMPRESSOR CONTACTOR	52C1,52C2	2	2	
9	M21 N71 350	FAN MOTOR CAPACITOR	C2	1	1	1.5μF440V
10	T2W 304 353	COMPRESSOR CAPACITOR	C1	1	1	17μF440V
11	T2W E03 330	OVERCURRENT RELAY	51C	1	1	
12	M21 B00 340	RELAY		2	2	G4F11123T
13	T2W E60 376	TERMINAL BLOCK	TB	1	1	2,1,2,1
14	T2W A79 382	FUSE	F12,F13	2	2	2A 250V
15	T2W 418 521	OUTER NOZZLE		1	1	
16	T2W E03 232	CABINET		1	1	
17	M21 478 297	TOP PANEL		1	1	
18	T2W 459 630	OUTDOOR HEAT EXCHANGER		1	1	
19	T2W 416 515	MOTOR SUPPORT		1	1	
20	T2W E03 293	SEPARATOR		1	1	
21	M21 179 645	SOLENOID VALVE		2	2	
22	M21 463 936	CAPILLARY TUBE (φ3.0xφ1.4x1900)		1	1	φ3.0xφ1.4x400 φ3.0xφ1.4x400
23	M21 195 648	SOLENOID VALVE		1	1	
24	M21 K08 936	CAPILLARY TUBE (φ3.0xφ1.6x1200)		1	1	φ3.0xφ1.6x1000
25	T2W E42 662	STOP VALVE (LIQUID)		2	2	
26	T2W E42 661	STOP VALVE (GAS)		2	2	
27	T2W E03 290	BASE ASSEMBLY		1	1	
28	T92 514 200	COMPRESSOR	MC	1	1	KH-134VLL
29	T2W E03 245	SERVICE PANEL		1	1	

**3-13. REMOTE CONTROLLER**

30	E02 408 426	REMOTE CONTROLLER		2		
----	-------------	-------------------	--	---	--	--

**3-14. OUTDOOR UNIT**  
**FUNCTIONAL PARTS AND AND ELECTRICAL PARTS AND STRUCTURAL PARTS**  
**MUX-18RV -E1 MUX-18RV -E2**



**3-15. REMOTE CONTROLLER**



MUX-18RV -<sup>[E1]</sup> MUX-18RV -<sup>[E2]</sup>

3-14. OUTDOOR UNIT

FUNCTIONAL PARTS AND AND ELECTRICAL PARTS AND STRUCTURAL PARTS

Part number that is circled are not shown in the illustration.

No.	Parts No.	Parts Name	Symbol in Wiring Diagram	Q'ty / set		Remarks
				MUX-18RV		
				<sup>[E1]</sup>	<sup>[E2]</sup>	
1	T2W 510 232	CABINET		1	1	
2	M21 B57 249	SIDE PANEL		1	1	
3	T2W 466 509	OUTER NOZZLE		1	1	
4	M21 K59 245	SERVICE PANEL		1	1	
5	T2W E41 291	BACK PANEL		1	1	
6	T2W E60 375	TERMINAL BLOCK	TB2	1	1	
7	T2W E60 376	TERMINAL BLOCK	TB	1	1	
8	T2W 304 353	COMPRESSOR CAPACITOR	C1,2	2	2	17μF 440V
9	M21 W16 350	OUTDOOR FAN CAPACITOR	C3	1	1	3μF 440V
10	T2W 813 342	OUTDOOR FAN RELAY	X11,X12	2	2	LY-2F
11	T2W 459 342	CONTACTOR	52C1,52C2	2	2	
12	M21 B19 515	MOTOR SUPPORT		1	1	
13	T2W A23 490	SOLENOID COIL	21R	1	1	
14	T2W E41 489	SOLENOID COIL(B)	21R1	1	1	
15	T2W E41 488	SOLENOID COIL(C)	21R2	1	1	
16	T2W A73 301	OUTDOOR FAN MOTOR	MF	1	1	RA6V50 -□□
17	R01 093 115	PROPELLER FAN		1	1	
18	M21 179 645	SOLENOID VALVE		2	2	
19	M21 195 648	SOLENOID VALVE		1	1	
20	M21 K59 662	STOP VALVE(LIQUID)		1	1	
21	M21 K59 661	STOP VALVE(GAS)		1	1	
22	T2W 689 665	STOP VALVE(LIQUID)		1	1	
23	T2W 689 667	STOP VALVE(GAS)		1	1	
24	M21 L01 666	UNION(1/4)		2	2	
25	M21 SJ4 667	UNION(3/8)		2	2	
26	T92 514 200	COMPRESSOR	MC1,MC2	2	2	KH-134VLL
27	T2W A74 630	OUTDOOR HEAT EXCHANGER		1	1	
28	M21 S07 936	CAPILLARY TUBE (φ3.0Xφ1.6X1,400)		3	3	φ3.0Xφ1.6X1,000 φ3.0Xφ1.6X1,100
29	M21 G46 936	CAPILLARY TUBE (φ3.0Xφ1.6X800)		1	1	φ3.0Xφ1.6X300
30	M21 B93 936	CAPILLARY TUBE (φ3.0Xφ1.4X1,100)		1	1	φ3.0Xφ1.4X1,100
31	T2W E03 330	OVERCURRENT RELAY	51C1,51C2	2	2	G4F11123T
32	T2W E61 377	TERMINAL BLOCK	TB3	1	1	
33	M21 370 378	TERMINAL BLOCK		2	2	
34	M21 B00 340	RELAY	X1,X2,52CA	3	3	
35	T2W E06 290	BASE		1	1	
36	T2W A79 382	FUSE	F12,F13,F14	3	3	2A 250V

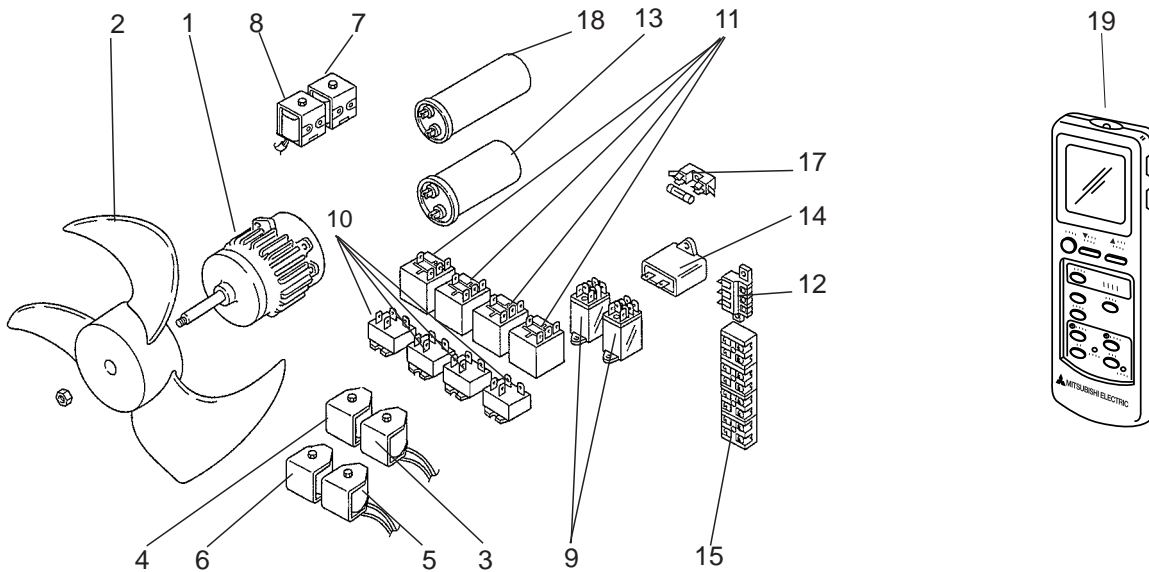
When servicing , cut the tube to the proper length as shown in the REFRIGERANT SYSTEM DIAGRAM. See page 39.

3-15. REMOTE CONTROLLER

37	E02 408 426	REMOTE CONTROLLER		2		
----	-------------	-------------------	--	---	--	--

### 3-16. OUTDOOR UNIT FUNCTIONAL PARTS AND AND ELECTRICAL PARTS MUX-24RV -<sup>E1</sup> MUX-24RV -<sup>E2</sup>

### 3-17. REMOTE CONTROLLER



### 3-16. OUTDOOR UNIT FUNCTIONAL PARTS AND AND ELECTRICAL PARTS

Part number that is circled is not shown in the illustration.

No.	Parts No.	Parts Name	Symbol in Wiring Diagram	Q'ty / unit		Remarks
				MUX-24RV		
				<sup>E1</sup>	<sup>E2</sup>	
1	T2W E44 301	FAN MOTOR	MF	1	1	
2	M21 17A 501	PROPELLER FAN		1	1	
3	T2W E44 388	SOLENOID COIL	21R1	1	1	
4	T2W E44 389	SOLENOID COIL	21R2	1	1	
5	T2W E38 388	SOLENOID COIL	21R3	1	1	
6	T2W E38 389	SOLENOID COIL	21R4	1	1	
7	T2W E37 388	SOLENOID COIL	21RA	1	1	
8	T2W E37 389	SOLENOID COIL	21RB	1	1	
9	T2W 813 342	FAN MOTOR RELAY	X11,X12	2	2	LY-2F
10	M21 B00 340	RELAY	X1,X2,X3,X4	4	4	G4F11123T-MT
11	T2W 459 342	COMPRESSOR RELAY	52C1,52C2 52C3,52C4	4	4	AC200/240V
12	T2W E06 353	FAN MOTOR CAPACITOR		1	1	3 $\mu$ F/440V
13	T2W A62 353	COMPRESSOR CAPACITOR	C1	1	1	30 $\mu$ F/420V
14	T2W E62 375	TERMINAL BLOCK	TB	1	1	
15	T2W E44 375	TERMINAL BLOCK	TB1,TB2 TB3,TB4	4	4	
16	M21 020 378	TERMINAL BLOCK	TB5,6,7,8,9,10	6	6	
17	T2W E08 381	FUSE		1	1	3.15A 250V
18	T2W 779 353	COMPRESSOR CAPACITOR	C2	1	1	25 $\mu$ F/420V

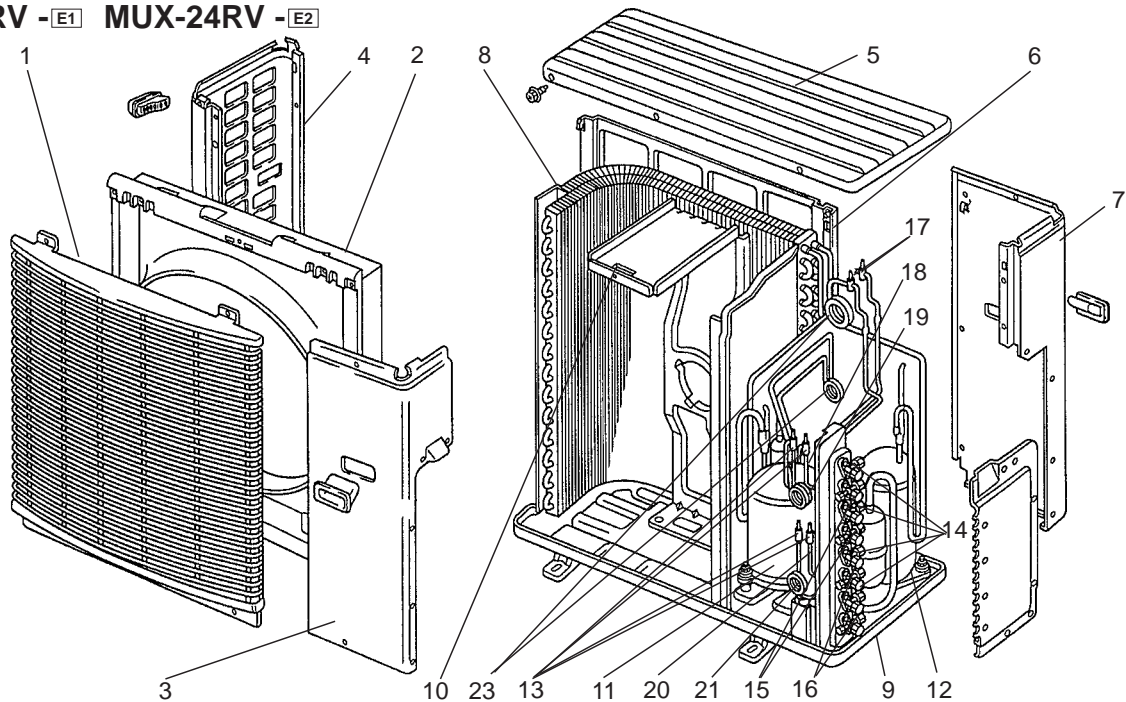
### 3-17. REMOTE CONTROLLER

19	E02 408 426	REMOTE CONTROLLER		3		
----	-------------	-------------------	--	---	--	--



### 3-18. OUTDOOR UNIT STRUCTURAL PARTS

MUX-24RV -<sup>E1</sup> MUX-24RV -<sup>E2</sup>



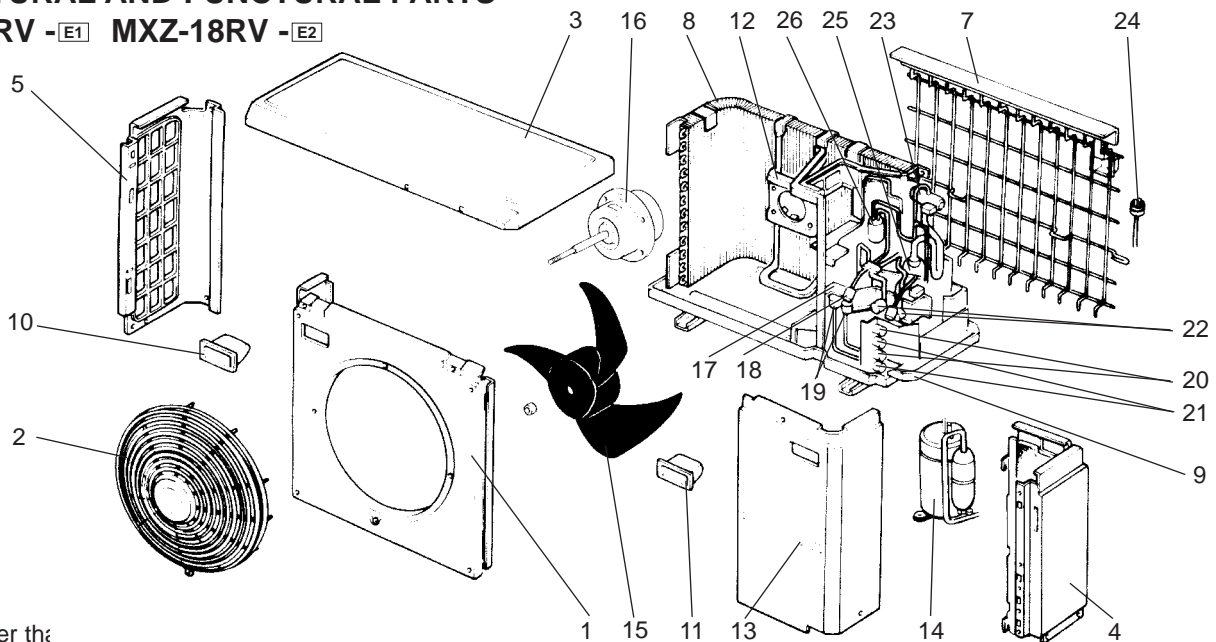
Part number that are circled is not shown in the illustration.

No.	Parts No.	Parts Name	Symbol in Wiring Diagram	Q'ty / unit MUX-24RV		Remarks
				<sup>E1</sup>	<sup>E2</sup>	
1	T2W E44 232	FRONT PANEL		1	1	
2	T2W E44 521	OUTER NOZZLE		1	1	
3	T2W E44 245	SERVICE PANEL		1	1	
4	T2W E44 249	SIDE PANEL		1	1	
5	T2W E44 297	TOP PANEL		1	1	
6	T2W E44 523	REAR GUARD		1	1	
7	T2W E44 248	REAR PANEL		1	1	
8	T2W E44 630	HEAT EXCHANGER		1	1	
9	T2W E44 290	BASE		1	1	
10	M21 51E 515	MOTOR SUPPORT		1	1	
11	T92 702 600	COMPRESSOR(A,B)	MC2	1	1	RH-174VGH
12	T92 531 600	COMPRESSOR(C,D)	MC1	1	1	RH-231VHA
13	M21 179 645	SOLENOID VALVE(A,B)		4	4	
14	M21 21J 662	STOP VALVE(LIQUID)		4	4	LIQUID
15	M21 00L 661	STOP VALVE		2	2	
16	M21 00A 661	STOP VALVE		2	2	
17	T2W E44 648	SOLENOID VALVE		2	2	
18	T2W E44 641	PIPE A S. V		1	1	
19	T2W E44 643	S. V HEADER A		1	1	
20	T2W E44 642	PIPE B S. V		1	1	
21	T2W E44 644	S. V HEADER B		1	1	
22	M21 K47 936	CAPILLARY TUBE ( $\phi 3.0 \times \phi 1.6 \times 800$ )		2	2	$\phi 3.0 \times \phi 1.6 \times 420$ $\phi 3.0 \times \phi 1.6 \times 650$
23	M21 AJ2 936	CAPILLARY TUBE ( $\phi 3.0 \times \phi 1.6 \times 1100$ )		2	2	$\phi 3.0 \times \phi 1.6 \times 1000$

When servicing, cut the tube to the proper length as shown in the REFRIGERANT SYSTEM DIAGRAM.

### 3-19. OUTDOOR UNIT STRUCTURAL AND FUNCTIONAL PARTS

MXZ-18RV -E1 MXZ-18RV -E2



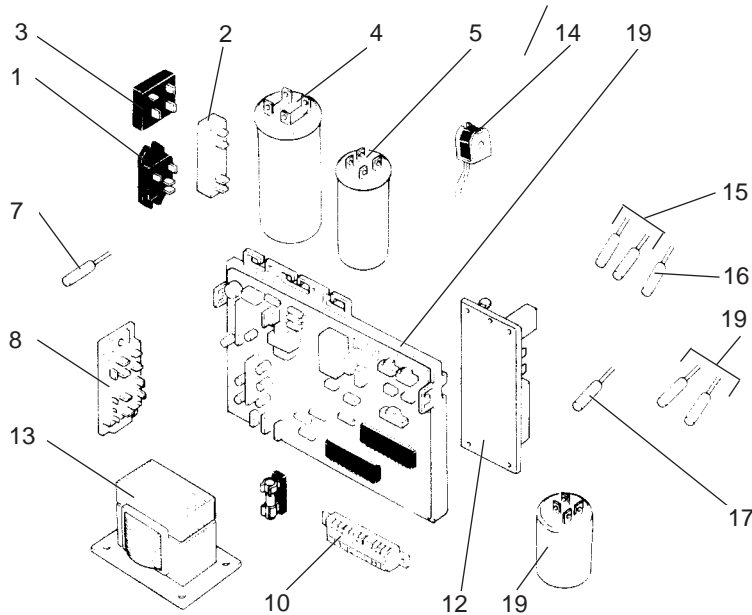
Part number th:

No.	Parts No.	Parts Name	Symbol in Wiring Diagram	Q'ty / unit		Remarks
				MXZ-18RV		
				E1	E2	
1	M21 LL4 232	FRONT PANEL		1	1	
2	M21 LL4 521	FAN GUARD		1	1	
3	M21 LL4 297	TOP PANEL		1	1	
4	M21 LL4 245	SERVICE PANEL		1	1	
5	R01 A00 662	SIDE PANEL		1	1	
6	M21 LL4 248	REAR PANEL		1	1	
7	T2W E65 523	REAR GUARD		1	1	
8	M21 SJ4 630	OUTDOOR HEAT EXCHANGER		1	1	
9	M21 SJ4 290	BASE ASSEMBLY		1	1	
10	T2W A70 009	HANDLE		2	2	
11	T2W A69 009	HANDLE		1	1	
12	T2W A70 515	MOTOR SUPPORT		1	1	
13	T2W E65 212	LABEL		1	1	
14	T92 669 452	COMPRESSOR	MC	1	1	RHV - 207FEM
15	M21 LL4 501	PROPELLER FAN		1	1	
16	T2W E41 301	OUTDOOR FAN MOTOR	MF	1	1	RA6V50-□□
17	M21 LL4 488	EXPANSION VALVE (COIL)	LEV. A	1	1	
18	M21 LL4 487	EXPANSION VALVE (COIL)	LEV. B	1	1	
19	M21 LL4 646	EXPANSION VALVE		2	2	
20	M21 SJ4 667	UNION (3/8F)		2	2	
21	M21 SJ4 666	UNION (1/4F)		2	2	
22	T2W A64 668	BALL VALVE (3/8)		2	2	
23	T7W 250 403	REVERSING VALVE		1	1	
24	T2W E41 646	HIGH PRESSURE SWITCH	HPS	1	1	
25	M21 LL4 939	ACCUMULATOR		1	1	
26	M21 LL4 938	MUFFLER		1	1	
27	M21 986 936	CAPILLARY TUBE ( $\phi 4.0 \times \phi 2.4 \times 2000$ )		1	1	$\phi 4.0 \times \phi 2.4 \times 300$ $\phi 4.0 \times \phi 2.4 \times 400$
28	M21 L11 936	CAPILLARY TUBE ( $\phi 2.0 \times \phi 0.6 \times 1000$ )		1	1	$\phi 2.0 \times \phi 0.6 \times 500$

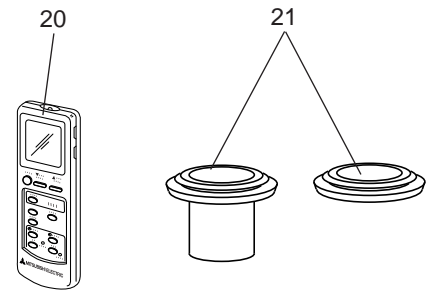
When servicing, cut the tube to the proper length as shown in the REFRIGERANT SYSTEM DIAGRAM.



### 3-20. OUTDOOR UNIT ELECTRICAL PARTS MXZ-18RV -E1 MXZ-18RV -E2



### 3-21. REMOTE CONTROLLER AND ACCESSORY PARTS



### 3-20. OUTDOOR UNIT ELECTRICAL PARTS

Part number that are circled are not shown in the illustration.

No.	Parts No.	Parts Name	Symbol in Wiring Diagram	Q'ty / unit		Remarks
				MXZ-18RV		
				E1	E2	
1	M21 A19 447	DIODE MODULE	DS63	1	1	
2	M21 U48 362	CURRENT DETECTING RESISTOR	R65	1	1	
3	T2W E22 341	DIODE STACK	DS61	1	1	
4	T2W A70 356	SMOOTHING CAPACITOR	C67	1	1	100 $\mu$ F 400V
5	T2W A70 357	POWER FACTOR CAPACITOR	C61	1	1	1800 $\mu$ F 400V
6	M21 LL4 424	NOISE FILTER	NF61	1	1	
7	T2W E41 309	FIN TEMPERATURE THERMISTOR	RT63	1	1	
8	M21 V47 443	POWER TRANSISTOR MODULE	TR	1	1	
⑨	T2W E58 375	TERMINAL BLOCK	TB	1	1	
10	T2W E58 376	TERMINAL BLOCK	TB	2	2	
11	T2W E58 451	ELECTRONIC CONTROL P.C. BOARD		1	1	
12	T2W E41 441	RELAY P.C. BOARD		1	1	
13	T2W A70 337	REACTOR	L	1	1	
14	T2W E41 398	R.V. COIL	21S4	1	1	
15	T2W E41 307	SUCTION TEMPERATURE THERMISTOR	RT66	1	1	
16	T2W E41 308	DEFROST TEMPERATURE THERMISTOR	RT61	1	1	SUCTION EVAPORATION
17	T2W E55 309	DISCHARGE TEMPERATURE THERMISTOR	RT62	1	1	
⑱	T2W E22 425	NOISE FILTER	NF62	1	1	
19	T2W E41 306	GAS PIPE TEMPERATURE THERMISTOR	RT64,65	1	1	

### 3-21. REMOTE CONTROLLER AND ACCESSORY PARTS

20	E02 430 426	REMOTE CONTROLLER		2		
21	T2W E59 704	DRAIN SOCKET ASSEMBLY		1	1	DRAIN SOCKET ×1 DRAIN CAP ×2







HEAD OFFICE MITSUBISHI DENKI BLDG.MARUNOUCHI TOKYO100-8310 TELEX J24532 CABLE MELCO TOKYO

© Copyright 2000 MITSUBISHI ELECTRIC ENGINEERING CO.,LTD  
Issued in Mar. 2000. No.OB252 543  
Printed in Japan

New publication, effective Mar. 2000  
Specifications subject to change without notice.