

# Air Conditioning

## Product Information

### MFZ-KA35VA : Inverter Heat Pump

R410A Floor Mounted System



This series is extremely versatile and is designed for wall attached installation at floor level. The auto swing vane provides a more natural and comfortable airflow throughout the room and the lightweight, compact design makes installation easy.

## FEATURES



### INDOOR

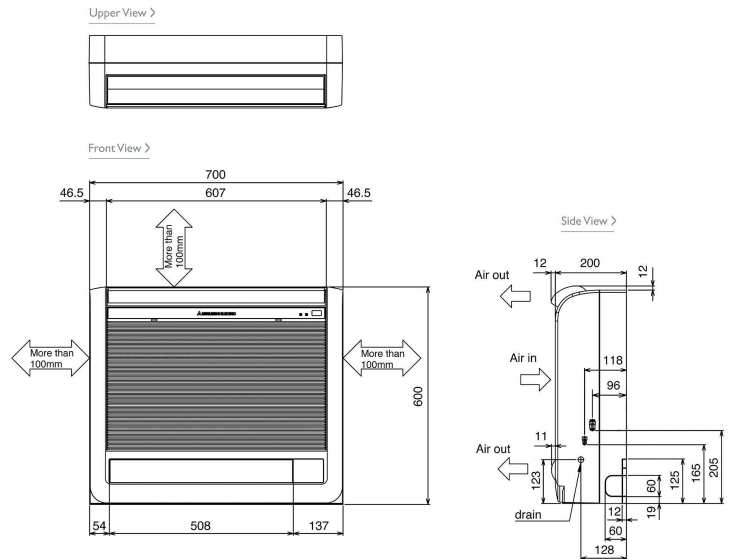
Heating Capacity (kW) (nominal)	4 (0.9 - 6.2)
Cooling Capacity (kW) (nominal)	3.5 (0.9 - 3.9)
Heating Capacity (kW) (UK)	3.3 (0.75 - 5.15)
Cooling Capacity (kW) (UK)	3.47 (0.9 - 3.85)
SHF (nominal and UK)	0.65
COP / EER (nominal)	3.64 / 3.21
SCOP / SEER	- / -
Energy Label (nominal)	A / A
Airflow (m³/min) (Heating) - Lo-Mi-Hi-SupHi	5.2 - 6.2 - 7.8 - 9.5
Airflow (m³/min) (Cooling) - Lo-Mi-Hi-SupHi	5 - 6.1 - 7.4 - 9.1
Pipe Size Gas (mm [in])	9.52 (3/8")
Pipe Size Liquid (mm [in])	6.35 (1/4")
Sound Pressure Level (dBA) Heating - Lo-Mi-Hi-SupHi	25 - 28 - 33 - 38
Sound Pressure Level (dBA) Cooling - Lo-Mi-Hi-SupHi	23 - 28 - 33 - 38
Sound Power Level (dBA) Cooling	-
Dimensions (mm) Width x Depth x Height	700 x 200 x 600
Weight (kg)	14
Electrical Supply	FED BY OUTDOOR UNIT
Phase	SINGLE
Fuse Rating (BS88) - HRC (A)	6
Interconnecting Cable No. Cores	4

### OUTDOOR

Sound Pressure Level (dBA) Heating / Cooling	48 / 47
Sound Power Level (dBA) Cooling	-
Weight (kg)	37
Dimensions (mm) Width x Depth x Height	800 x 285 x 550
Electrical Supply	220-240V, 50HZ
Phase	SINGLE
System Power Input (kW) - Heating / Cooling (nominal)	1.1 / 1.09
System Power Input (kW) - Heating / Cooling (UK)	1 / 0.87
Starting Current (A)	4.75
System Running Current (A) [MAX] - Heating / Cooling	4.95 / 4.75 [9.4]
Fuse Rating (BS88) - HRC (A)	10
Mains Cable No. Cores	3
Max Pipe Length (m)	20
Max Height Difference (m)	12
Charge R410A (kg) - (pre charged length)	1.05 (7)

### DIMENSIONS

MFZ-KA35VA



### DIMENSIONS

SUZ-KA35VA3

