

# 12

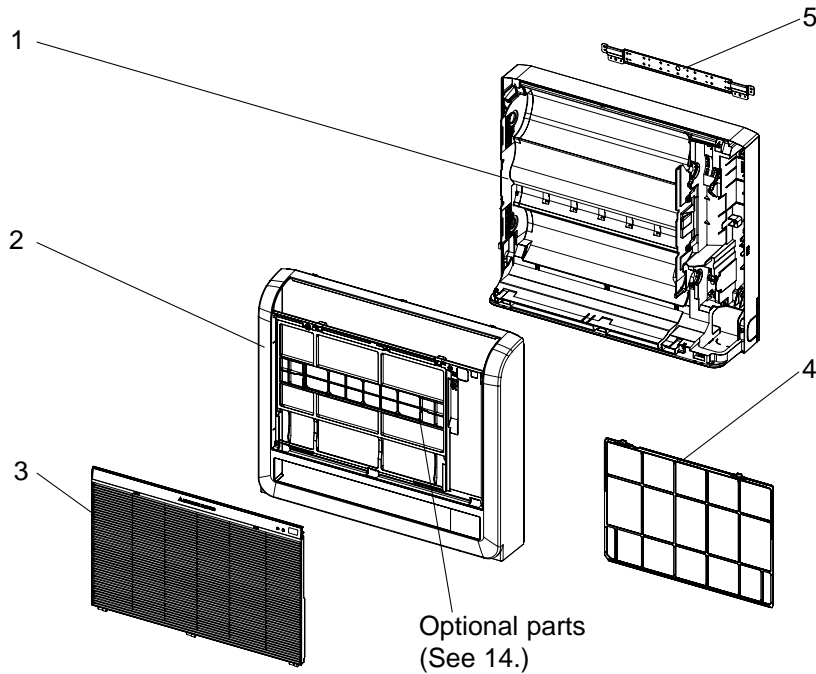
## PARTS LIST (non-RoHS compliant)

MFZ-KA25VA

MFZ-KA35VA

MFZ-KA50VA

### 12-1. INDOOR UNIT STRUCTURAL PARTS



### 12-2. ACCESSORY AND REMOTE CONTROLLER



### 12-1. INDOOR UNIT STRUCTURAL PARTS

No.	Part No.	Part name	Symbol in Wiring Diagram	Q'ty/unit			Remarks
				MFZ-KA25VA - [E1]	MFZ-KA35VA - [E1]	MFZ-KA50VA - [E1]	
1	M21 E0W 234	BOX ASSEMBLY		1	1	1	
2	T2W A4T 000	PANEL ASSEMBLY		1	1	1	
3	T2W A4T 010	FRONT GRILLE		1	1	1	
4	T2W A4T 100	CATECHIN AIR FILTER		1	1	1	
5	T2W A4T 233	BACK PLATE		1	1	1	

### 12-2. ACCESSORY AND REMOTE CONTROLLER

Part number that is circled is not shown in the illustration.

6	T2W A4T 426	REMOTE CONTROLLER		1	1	1	KM05G
⑦	M21 HL5 256	FELT TAPE		1	1	1	

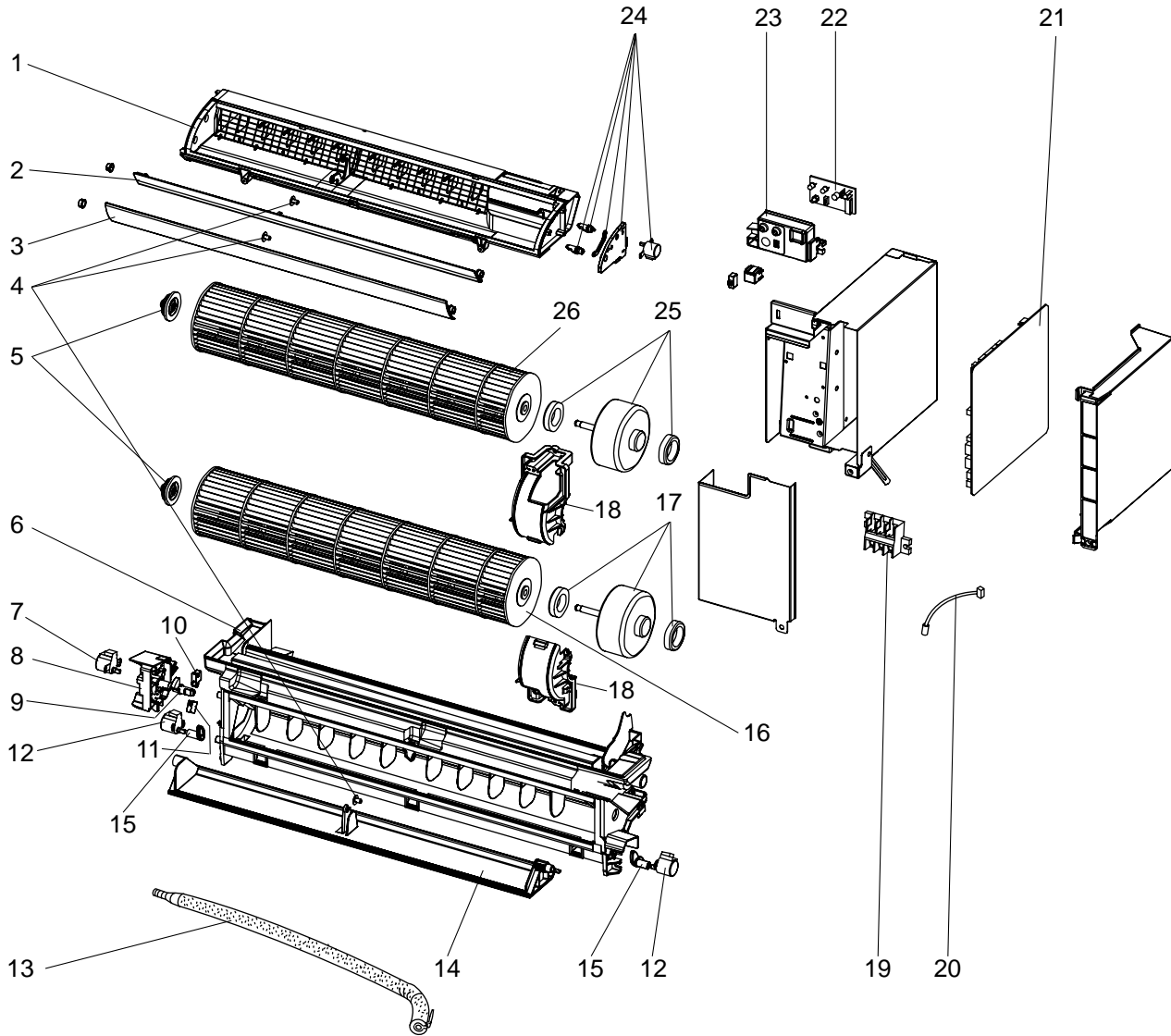
# PARTS LIST (non-RoHS compliant)

MFZ-KA25VA

MFZ-KA35VA

MFZ-KA50VA

## 12-3. INDOOR UNIT ELECTRICAL PARTS AND FUNCTIONAL PARTS



# PARTS LIST (non-RoHS compliant)

## 12-3. INDOOR UNIT ELECTRICAL PARTS AND FUNCTIONAL PARTS

Part numbers that are circled are not shown in the illustration.

No.	Part No.	Part name	Symbol in Wiring Diagram	Q'ty/unit			Remarks
				MFZ-KA25VA - [E1]	MFZ-KA35VA - [E1]	MFZ-KA50VA - [E1]	
1	M21 E0W 235	NOZZLE ASSEMBLY (UPPER)		1	1	1	
2	T2W A6T 040	HORIZONTAL VANE (BACK)		1	1	1	
3	T2W A4T 040	HORIZONTAL VANE (FRONT)		1	1	1	
4	T2W A4T 079	VANE SLEEVE		3	3	3	
5	M21 E0W 504	BEARING ASSEMBLY		2	2	2	
6	M21 E2W 235	NOZZLE ASSEMBLY (LOWER)		1	1	1	
7	T2W A6T 306	DAMPER MOTOR	MV2	1	1	1	UP & DOWN
8	T2W A4T 506	VANE MOTOR SUPPORT		1	1	1	
9	T2W A6T 049	SM SHAFT		1	1	1	
10	T2W A6T 047	DAMPER LIMIT SWITCH (CLOSE)	LS2	1	1	1	
11	T2W A4T 047	DAMPER LIMIT SWITCH (OPEN)	LS1	1	1	1	
12	M21 WJ7 306	DAMPER LOCK MOTOR	ML1,2	2	2	2	RIGHT & LEFT
13	M21 W60 703	DRAIN HOSE		1	1	1	
14	T2W A6T 041	DAMPER		1	1	1	
15	T2W A4T 049	LOCK SHAFT		2	2	2	
16	T2W A5T 309	LINE FLOW FAN (LOWER)		1	1	1	
17	M21 1L9 300	INDOOR FAN MOTOR ASSEMBLY (LOWER)*	MF2	1	1	1	RC0J30- <input type="checkbox"/> <input type="checkbox"/>
18	T2W A4T 515	MOTOR BAND		2	2	2	
19	T2W YH1 376	TERMINAL BLOCK	TB	1	1	1	
20	M21 H81 307	ROOM TEMPERATURE THERMISTOR	RT11	1	1	1	
21	T2W A4T 450	ELECTRONIC CONTROL P.C. BOARD		1			AUTO RESTART
	T2W A5T 450	ELECTRONIC CONTROL P.C. BOARD			1		AUTO RESTART
	T2W A6T 450	ELECTRONIC CONTROL P.C. BOARD				1	AUTO RESTART
22	T2W A4T 328	DISPLAY RECEIVER SWITCH P.C. BOARD		1	1	1	
23	M21 E0W 043	LAMP COVER		1	1	1	
24	T2W A4T 306	HORIZONTAL VANE MOTOR UNIT	MV1	1	1	1	UP & DOWN
25	M21 1L3 300	INDOOR FAN MOTOR ASSEMBLY (UPPER)*	MF1	1	1	1	RC0J30- <input type="checkbox"/> <input type="checkbox"/>
26	T2W A4T 309	LINE FLOW FAN (UPPER)		1	1	1	
(27)	T2W A4T 382	FUSE	F11	1	1	1	T3.15AL250V
(28)	T2W A4T 384	VARISTOR	NR11	1	1	1	

\* Including fan motor rubber mount (2PCS/SET)

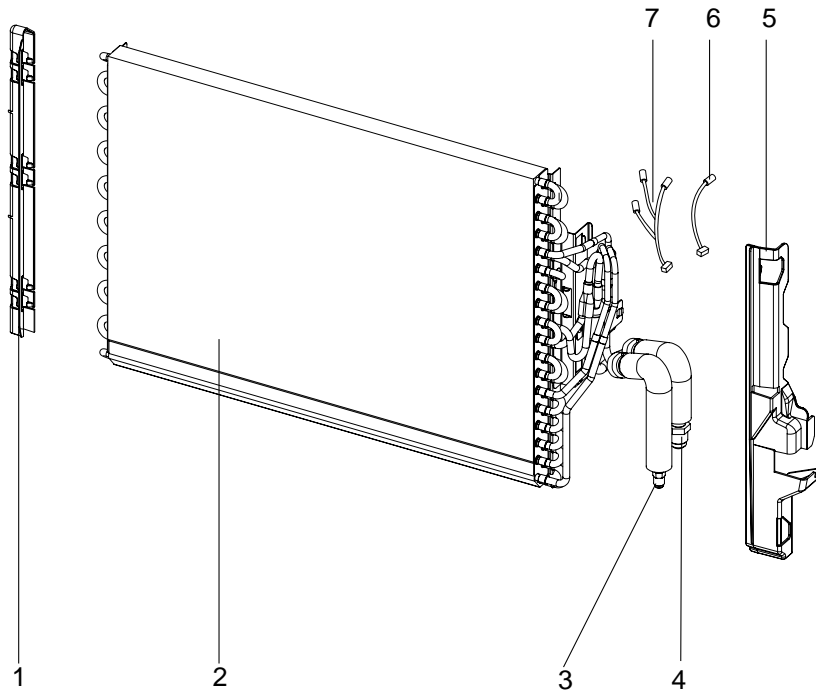
# PARTS LIST (non-RoHS compliant)

MFZ-KA25VA

MFZ-KA35VA

MFZ-KA50VA

## 12-4. INDOOR UNIT HEAT EXCHANGER



## 12-4. INDOOR UNIT HEAT EXCHANGER

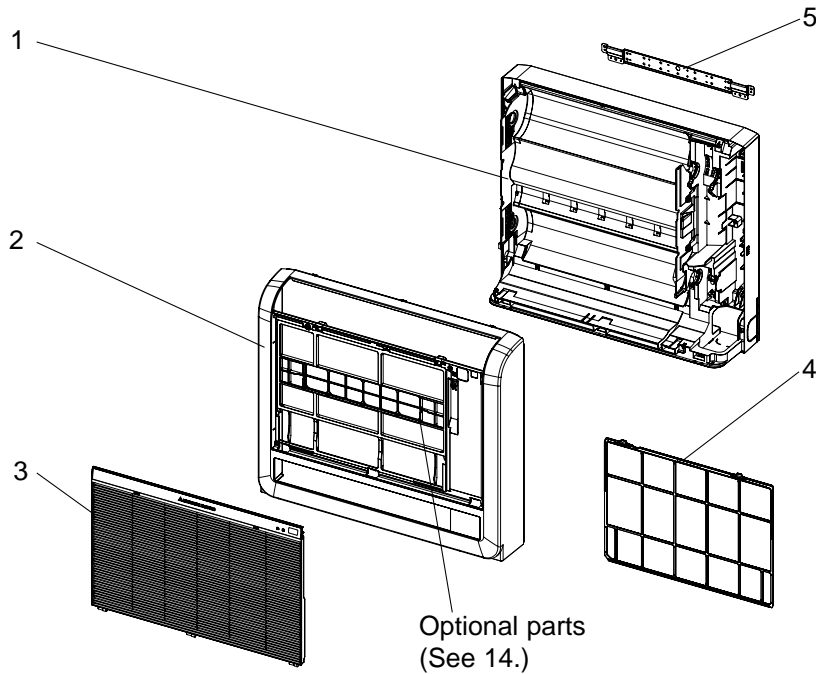
No.	Part No.	Part name	Symbol in Wiring Diagram	Q'ty/unit			Remarks
				MFZ-KA25VA - [E1]	MFZ-KA35VA - [E1]	MFZ-KA50VA - [E1]	
1	T2W A4T 638	HAIR PIN COVER		1	1	1	
2	M21 E0W 620	INDOOR HEAT EXCHANGER		1	1		
	M21 E8W 620	INDOOR HEAT EXCHANGER				1	
3	M21 VL4 664	UNION (LIQ)		1	1	1	φ 6.35
4	M21 NJ9 663	UNION (GAS)		1	1		φ 9.52
	M21 VL4 663	UNION (GAS)				1	φ 12.7
5	T2W A4T 791	WATER COVER		1	1	1	
6	T2W A5T 308	INDOOR COIL THERMISTOR	RT13	1	1	1	
7	T2W A4T 308	INDOOR COIL THERMISTOR SET	RT12,14,15	1	1	1	3PCS/SET

# 13

## RoHS PARTS LIST (RoHS compliant)

MFZ-KA25VA  
MFZ-KA35VA  
MFZ-KA50VA

### 13-1. INDOOR UNIT STRUCTURAL PARTS



### 13-2. ACCESSORY AND REMOTE CONTROLLER



### 13-1. INDOOR UNIT STRUCTURAL PARTS

No.	RoHS	Part No.	Part name	Symbol in Wiring Diagram	Q'ty/unit												Remarks
					MFZ-												
					25VA-				35VA-				50VA-				
					E1	E2	E3	E4	E1	E2	E3	E4	E1	E2	E3	E4	
1	G	T2W L3V 234	BOX ASSEMBLY		1	1	1	1	1	1	1	1	1	1	1	1	
2	G	T2W L3V 000	PANEL ASSEMBLY		1	1	1	1	1	1	1	1	1	1	1	1	
3	G	T2W L3V 010	FRONT GRILLE		1	1	1	1	1	1	1	1	1	1	1	1	
4	G	M21 L3V 100	GATECHIN AIR FILTER		1	1	1	1	1	1	1	1	1	1	1	1	
5	G	T2W L3V 233	BACK PLATE		1	1	1	1	1	1	1	1	1	1	1	1	

### 13-2. ACCESSORY AND REMOTE CONTROLLER

Part number that is circled is not shown in the illustration.

6	G	T2W A4T 426	REMOTE CONTROLLER		1	1	1	1	1	1	1	1	1	1	1	1	KM05G
⑦	G	M21 L3V 256	FELT TAPE		1	1	1	1	1	1	1	1	1	1	1	1	

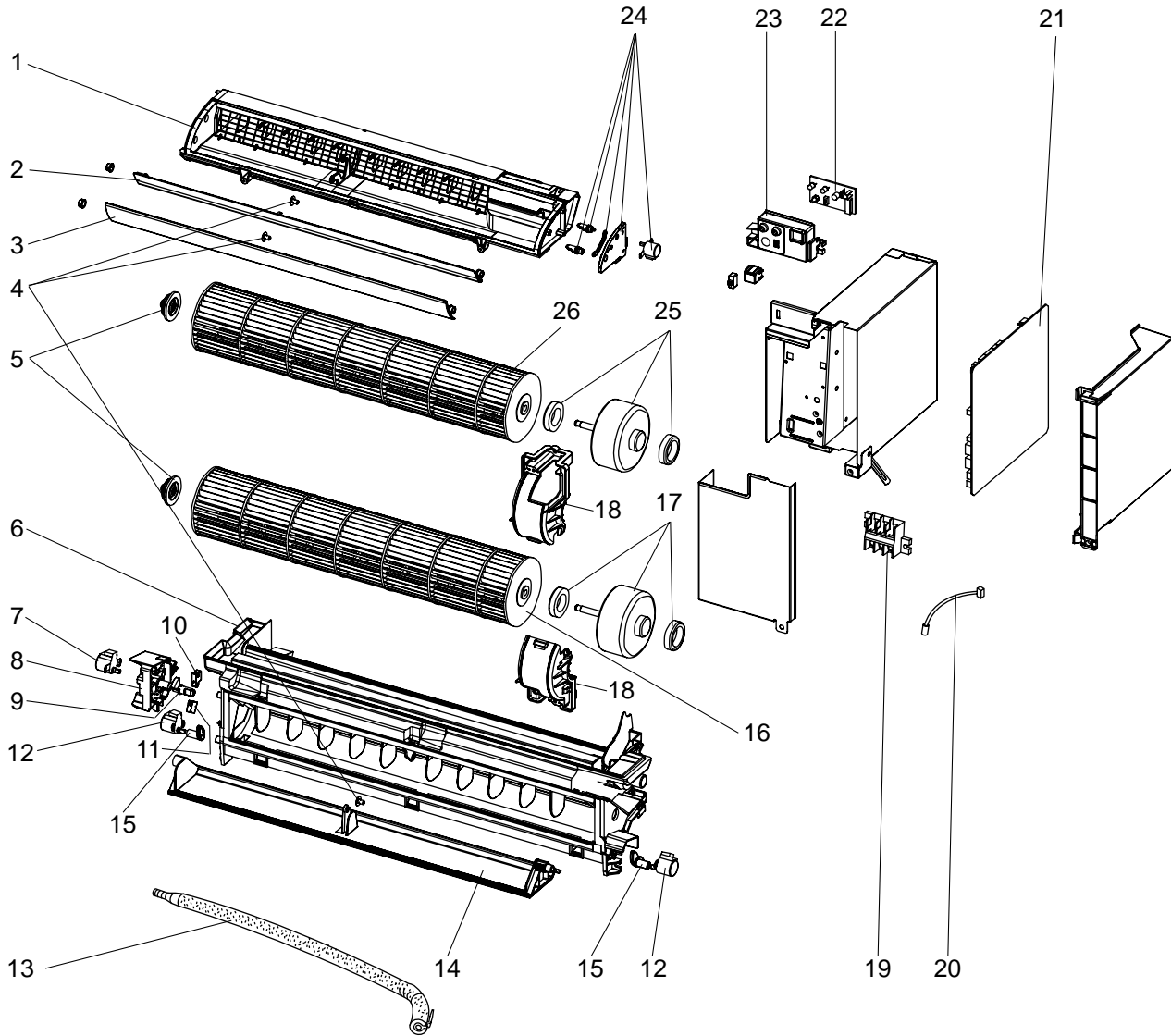
# RoHS PARTS LIST (RoHS compliant)

MFZ-KA25VA

MFZ-KA35VA

MFZ-KA50VA

## 13-3. INDOOR UNIT ELECTRICAL PARTS AND FUNCTIONAL PARTS



# RoHS PARTS LIST (RoHS compliant)

## 13-3. INDOOR UNIT ELECTRICAL PARTS AND FUNCTIONAL PARTS

Part numbers that are circled are not shown in the illustration.

No.	RoHS	Part No.	Part name	Symbol in Wiring Diagram	Q'ty/unit												Remarks
					MFZ-												
					25VA-				35VA-				50VA-				
					E1	E2	E3	E4	E1	E2	E3	E4	E1	E2	E3	E4	
1	G	M21 L3V 235	NOZZLE ASSEMBLY (UPPER)		1	1	1	1	1	1	1	1	1	1	1	1	
2	G	M21 L4V 040	HORIZONTAL VANE (BACK)		1	1	1	1	1	1	1	1	1	1	1	1	
3	G	M21 L3V 040	HORIZONTAL VANE (FRONT)		1	1	1	1	1	1	1	1	1	1	1	1	
4	G	M21 L3V 071	VANE SLEEVE		3	3	3	3	3	3	3	3	3	3	3	3	
5	G	M21 L4V 504	BEARING ASSEMBLY		2	2	2	2	2	2	2	2	2	2	2	2	
6	G	M21 L4V 235	NOZZLE ASSEMBLY (LOWER)		1	1	1	1	1	1	1	1	1	1	1	1	
7	G	M21 L5V 306	DAMPER MOTOR	MV2	1	1	1	1	1	1	1	1	1	1	1	1	UP & DOWN
8	G	M21 L3V 506	VANE MOTOR SUPPORT		1	1	1	1	1	1	1	1	1	1	1	1	
9	G	M21 L3V 049	SM SHAFT		1	1	1	1	1	1	1	1	1	1	1	1	
10	G	M21 L3V 047	DAMPER LIMIT SWITCH (CLOSE)	LS2	1	1	1	1	1	1	1	1	1	1	1	1	
11	G	M21 L4V 047	DAMPER LIMIT SWITCH (OPEN)	LS1	1	1	1	1	1	1	1	1	1	1	1	1	
12	G	M21 L4V 306	DAMPER LOCK MOTOR	ML1,2	2	2	2	2	2	2	2	2	2	2	2	2	RIGHT & LEFT
13	G	M21 L3V 703	DRAIN HOSE		1	1			1	1			1	1			
	G	M21 3K5 703	DRAIN HOSE				1	1			1	1			1	1	
14	G	M21 L3V 041	DAMPER		1	1	1	1	1	1	1	1	1	1	1	1	
15	G	M21 L4V 049	LOCK SHAFT		2	2	2	2	2	2	2	2	2	2	2	2	
16	G	M21 L4V 302	LINE FLOW FAN (LOWER)		1	1	1	1	1	1	1	1	1	1	1	1	
17	G	M21 1L9 300	INDOOR FAN MOTOR ASSEMBLY (LOWER) *	MF2	1	1	1	1	1	1	1	1	1	1	1	1	RC0J30-□□
18	G	M21 L3V 023	MOTOR BAND		2	2	2	2	2	2	2	2	2	2	2	2	
19	G	T2W L3V 376	TERMINAL BLOCK	TB	1	1	1	1	1	1	1	1	1	1	1	1	
20	G	M21 L3V 307	ROOM TEMPERATURE THERMISTOR	RT11	1	1	1	1	1	1	1	1	1	1	1	1	
21	G	T2W L3V 450	ELECTRONIC CONTROL P.C. BOARD		1	1											AUTO RESTART
	G	T2W 2L0 450	ELECTRONIC CONTROL P.C. BOARD				1	1									AUTO RESTART
	G	T2W L4V 450	ELECTRONIC CONTROL P.C. BOARD						1	1							AUTO RESTART
	G	T2W 2L2 450	ELECTRONIC CONTROL P.C. BOARD								1	1					AUTO RESTART
	G	T2W L5V 450	ELECTRONIC CONTROL P.C. BOARD										1	1			AUTO RESTART
	G	T2W 2L4 450	ELECTRONIC CONTROL P.C. BOARD												1	1	AUTO RESTART
22	G	M21 L3V 328	DISPLAY RECEIVER SWITCH P.C. BOARD		1	1	1	1	1	1	1	1	1	1	1	1	
23	G	T2W L3V 043	LAMP COVER		1	1	1	1	1	1	1	1	1	1	1	1	
24	G	M21 L3V 306	HORIZONTAL VANE MOTOR UNIT	MV1	1	1	1	1	1	1	1	1	1	1	1	1	UP & DOWN
25	G	M21 1L3 300	INDOOR FAN MOTOR ASSEMBLY (UPPER) *	MF1	1	1	1	1	1	1	1	1	1	1	1	1	RC0J30-□□
26	G	M21 L3V 302	LINE FLOW FAN (UPPER)		1	1	1	1	1	1	1	1	1	1	1	1	
⑳	G	T2W L3V 382	FUSE	F11	1	1	1	1	1	1	1	1	1	1	1	1	T3.15AL250V
㉑	G	T2W L3V 384	VARISTOR	NR11	1	1	1	1	1	1	1	1	1	1	1	1	

\* Including fan motor rubber mount (2PCS/SET)

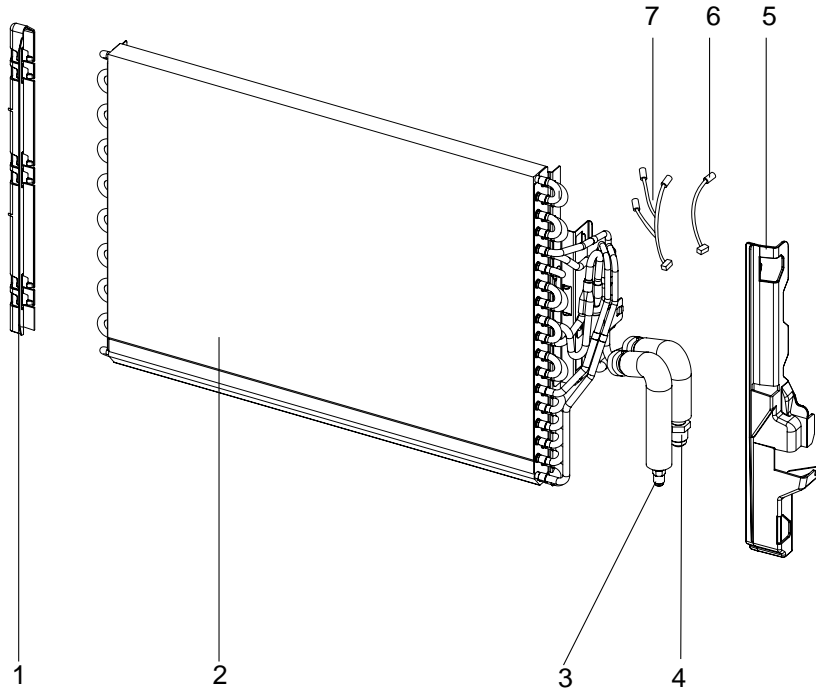
# RoHS PARTS LIST (RoHS compliant)

MFZ-KA25VA

MFZ-KA35VA

MFZ-KA50VA

## 13-4. INDOOR UNIT HEAT EXCHANGER



## 13-4. INDOOR UNIT HEAT EXCHANGER

No.	RoHS	Part No.	Part name	Symbol in Wiring Diagram	Q'ty/unit												Remarks
					MFZ-												
					25VA-				35VA-				50VA-				
E1	E2	E3	E4	E1	E2	E3	E4	E1	E2	E3	E4						
1	G	M21 L3V 638	HAIR PIN COVER		1	1	1	1	1	1	1	1	1	1	1	1	
2	G	M21 L3V 620	INDOOR HEAT EXCHANGER		1	1	1	1	1	1	1						
	G	M21 L5V 620	INDOOR HEAT EXCHANGER										1	1	1	1	
3	G	M21 L3V 664	UNION (LIQ)		1	1	1	1	1	1	1	1	1	1	1	1	φ6.35
4	G	M21 L3V 663	UNION (GAS)		1	1	1	1	1	1	1						φ9.52
	G	M21 L5V 663	UNION (GAS)										1	1	1	1	φ12.7
5	G	M21 L3V 791	WATER COVER		1	1	1	1	1	1	1	1	1	1	1	1	
6	G	M21 L4V 305	INDOOR COIL THERMISTOR	RT13	1	1	1	1	1	1	1	1	1	1	1	1	
7	G	M21 L3V 305	INDOOR COIL THERMISTOR SET	RT12,14,15	1	1	1	1	1	1	1	1	1	1	1	1	3PCS/SET



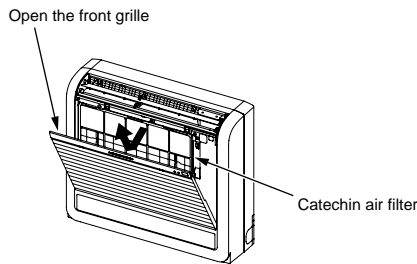
**AIR CLEANING FILTER (ANTI-ALLERGY ENZYME FILTER)**

- Normal life of AIR CLEANING FILTER is 1 year.  
If AIR CLEANING FILTER is to be washed, soak AIR CLEANING FILTER in water (when showing dirt, in lukewarm water) and rinse it delicately, without removing the filter from the frame about once every 3 months.
- Clogged AIR CLEANING FILTER may reduce the air conditioner capacity or cause frost on the air outlet.
- Do not remove or attach AIR CLEANING FILTER during unit operation.

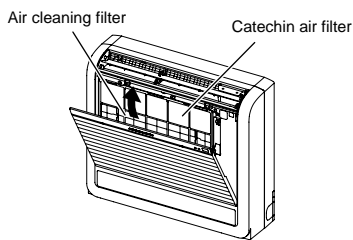
Model	Part No.
MFZ-KA25VA- E1	MAC-415FT-E
MFZ-KA25VA- E2	
MFZ-KA25VA- E3	
MFZ-KA25VA- E4	
MFZ-KA35VA- E1	
MFZ-KA35VA- E2	
MFZ-KA35VA- E3	
MFZ-KA35VA- E4	
MFZ-KA50VA- E1	
MFZ-KA50VA- E2	
MFZ-KA50VA- E3	
MFZ-KA50VA- E4	

**Replacement of the air cleaning filter**

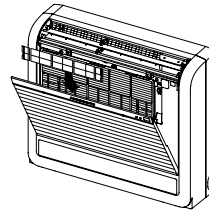
(1) Remove the catechin air filter.



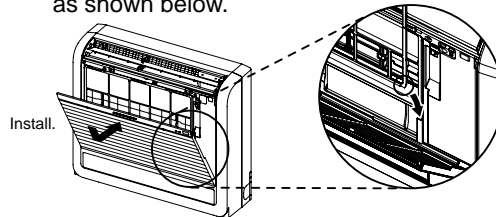
(2) Remove the air cleaning filter.



(3) Attach a new air cleaning filter. Fix the filter with the tabs securely.



(4) Install the catechin air filter. Be sure to install its both ends into the tabs as shown below.



(5) Securely close the front grille.