



LGH-25RX4

Lossnay

Commercial Series



This commercially orientated system can be utilised virtually anywhere to extract stale air and then recover the heating or cooling energy to either warm or cool incoming fresh air.

- **Effective fresh air ventilation**
- **High heat recovery**
- **Free cooling function**
- **Good sound attenuation**
- **New "Hyper Lossnay Core". At only 25um (approx 1/5 the thickness of LGH-RX3) the Lossnay core uses the thinnest paper in the world to achieve high enthalpy exchange efficiency**



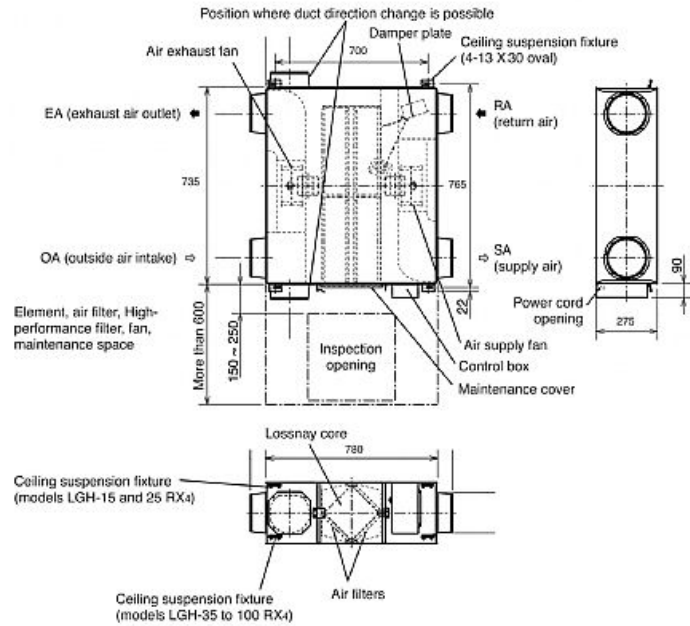
Pictures not to scale

Product Details

LGH-25RX4	
Airflow (m3/h) - Lossnay Ventilation - Lo-Hi-ExHi	165-250-250
Noise (dBA) - Lossnay Ventilation - Lo-Hi-ExHi	23-26-27.5
Noise (dBA) - Bypass Ventilation - Lo-Hi-ExHi	23-26.5-28
Width - mm	735
Depth - mm	780
Height - mm	275
Weight - kg	21
Electrical Supply	220-240v, 50Hz
Fuse Rating (BS88) - HRC (A)	6
Duct Size (mm)	150
Power Input (W) - Extra high	117
Starting Current (A)	0.8
Running Current - Low	0.25
Running Current - High	0.40
Running Current - Extra High	0.49
Mains Cable No. Cores	3
Temperature Exchange Efficiency (%) - Low	83.5
Temperature Exchange Efficiency (%) - High	78
Temperature Exchange Efficiency (%) - Extra High	78

Dimensions

LGH-25RX4



Telephone: 01707 282880

Email: air.conditioning@meuk.mee.com Website: <http://www.mitsubishielectric.co.uk/aircon>

Mitsubishi Electric reserves the right to make any variation in technical specification to the equipment described, or to withdraw or replace products without prior notification or public announcement.

Tel:
Fax:

