



LGH-200RX4

Lossnay

Commercial Series



This commercially orientated system can be utilised virtually anywhere to extract stale air and then recover the heating or cooling energy to either warm or cool incoming fresh air.

- **Effective fresh air ventilation**
- **High heat recovery**
- **Free cooling function**
- **Good sound attenuation**
- **New "Hyper Lossnay Core". At only 25um (approx 1/5 the thickness of LGH-RX3) the Lossnay core uses the thinnest paper in the world to achieve high enthalpy exchange efficiency**



Pictures not to scale

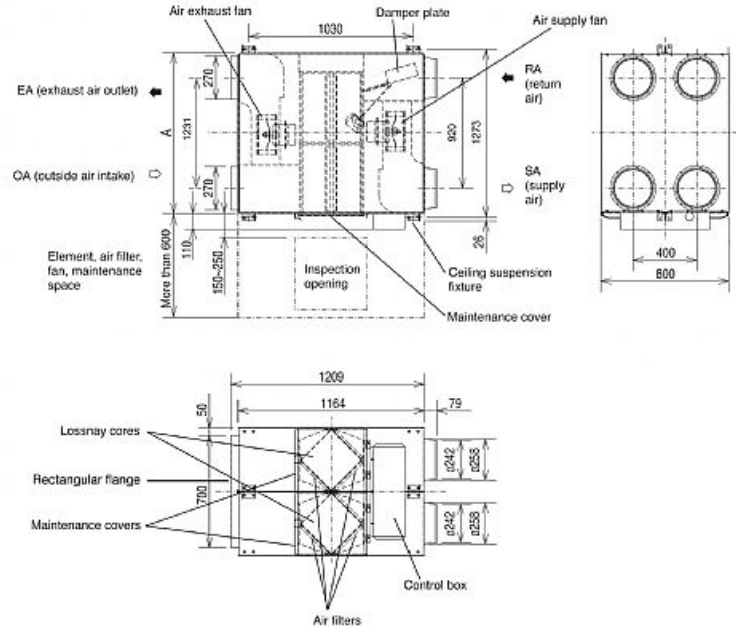
Product Details

LGH-200RX4

| | |
|---|----------------|
| Airflow (m3/h) - Lossnay Ventilation - Lo-Hi-ExHi | 1650-2000-2000 |
| Noise (dBA) - Lossnay Ventilation - Lo-Hi-ExHi | 36-38-40 |
| Noise (dBA) - Bypass Ventilation - Lo-Hi-ExHi | 37-39.5-41 |
| Width - mm | 1231 |
| Depth - mm | 1164 |
| Height - mm | 800 |
| Weight - kg | 140 |
| Electrical Supply | 220-240v, 50Hz |
| Fuse Rating (BS88) - HRC (A) | 16 |
| Duct Size (mm) | 270 |
| Power Input (W) - Extra high | 1010 |
| Starting Current (A) | 10.8 |
| Running Current - Low | 3.50 |
| Running Current - High | 4.20 |
| Running Current - Extra High | 4.30 |
| Mains Cable No. Cores | 3 |
| Temperature Exchange Efficiency (%) - Low | 81.5 |
| Temperature Exchange Efficiency (%) - High | 79 |
| Temperature Exchange Efficiency (%) - Extra High | 79 |

Dimensions

LGH-200RX4



Telephone: 01707 282880

Email: air.conditioning@meuk.mee.com Website: <http://www.mitsubishielectric.co.uk/aircon>

Mitsubishi Electric reserves the right to make any variation in technical specification to the equipment described, or to withdraw or replace products without prior notification or public announcement.

Tel:
Fax:

