

# Air Conditioning

## Product Information

**PEFY-WP25VMA-E**  
Ceiling Concealed Ducted  
Indoor Unit (H-VRF)

Making a  
World of  
Difference

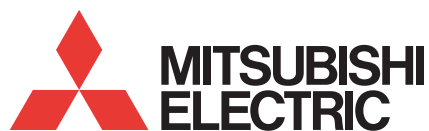
CITY MULTI



The PEFY-WP-VMA-E (H-VRF) ducted indoor unit is concealed within the ceiling space to allow unobtrusive air conditioning. Flexibility of duct layout allows air flow patterns to be arranged to suit any application.

### Key Features

- Low height - only 250mm
- Wide range of external static pressure settings (35-150Pa)
- Low noise levels thanks to the use of a centrifugal fan - as low as 23dBA
- Drain pump included as standard
- CN105 connector available - connect to MELCOBEMS MINI for simple BEMS interfacing



Air Conditioning | Heating  
Ventilation | Controls

# Air Conditioning

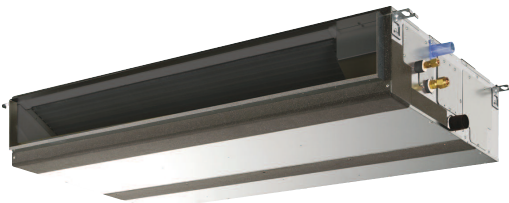
## Product Information

### PEFY-WP25VMA-E Ceiling Concealed Ducted Indoor Unit (H-VRF)

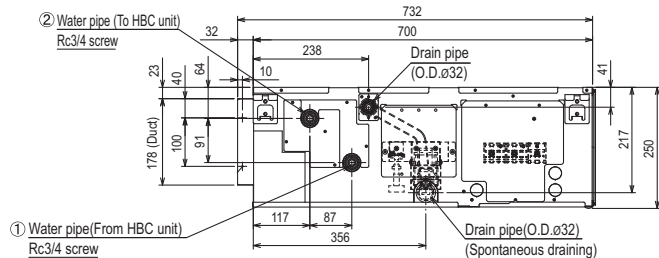
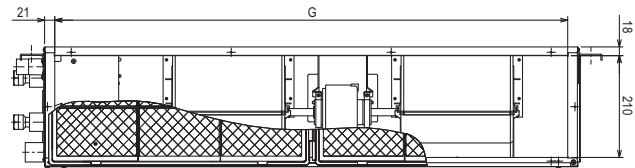
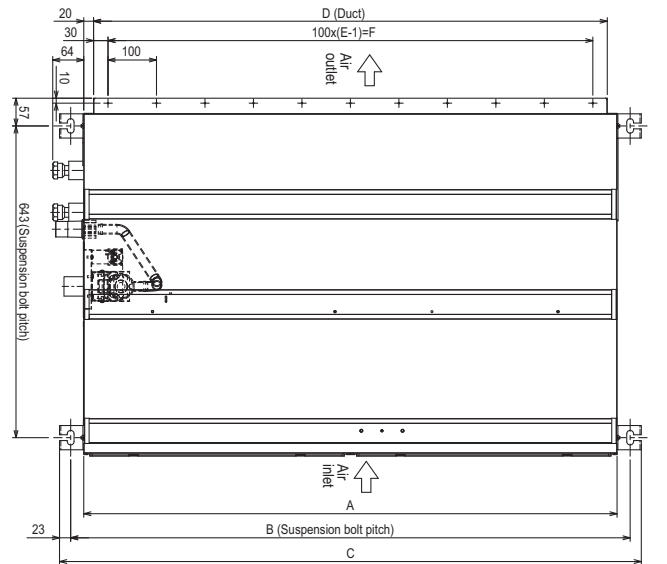
Making a  
World of  
Difference

PEFY - INDOOR UNIT		PEFY-WP25VMA-E
CAPACITY (kW)	Heating (nominal)	3.2
	Cooling (nominal)	2.8
	UK Heating	3.2
	UK Total Cooling - Hi (Sensible)	2.50 (2.50)
	UK Total Cooling - Mi1	2.40
POWER INPUT (kW)	Heating (nominal)	0.09
	Cooling (nominal)	0.09
AIRFLOW (l/s)	Lo-Mi-Hi	167-200-233
EXTERNAL STATIC PRESSURE (Pa)		35-50-70-100-150
SOUND PRESSURE LEVEL (dBA) Lo-Mi1-Hi		23-27-30
WEIGHT (kg)		26
DIMENSIONS (mm)	Width	900
	Depth	732
	Height	250
ELECTRICAL SUPPLY		220-240v, 50Hz
PHASE		Single
RUNNING CURRENT (A)	Heating / Cooling	0.53 / 0.64
FUSE RATING (BS88) - HRC (A)		6
MAINS CABLE No. Cores		3

Notes:  
H-VRF indoor units can only be configured with the CMB-WP HBC (H-VRF) and PURY-(E)P YLM-A or PQRY-P YLM outdoor units. Indoor unit water connections 3/4" BSP screw.



## DIMENSIONS



Model	A	B	C	D	E	F	G	① Water pipe (From HBC unit)	② Water pipe (To HBC unit)
PEFY-WP20VMA-E	700	754	800	660	7	600	658	Rc3/4 screw	
PEFY-WP25.32VMA-E	900	954	1000	860	9	800	858		
PEFY-WP40.50VMA-E	1100	1154	1200	1060	11	1000	1058		



Telephone: 01707 282880

email: [air.conditioning@meuk.mee.com](mailto:air.conditioning@meuk.mee.com) web: [www.airconditioning.mitsubishielectric.co.uk](http://www.airconditioning.mitsubishielectric.co.uk)

UNITED KINGDOM Mitsubishi Electric Europe Living Environmental Systems Division  
Travellers Lane, Hatfield, Hertfordshire, AL10 8XB, England General Enquiries Telephone: 01707 282880 Fax: 01707 278881

IRELAND Mitsubishi Electric Europe Westgate Business Park, Ballymount, Dublin 24, Ireland  
Telephone: Dublin (01) 419 8800 Fax: Dublin (01) 419 8890 International code: (003531)

Country of origin: United Kingdom - Japan - Thailand - Malaysia. ©Mitsubishi Electric Europe 2016. Mitsubishi and Mitsubishi Electric are trademarks of Mitsubishi Electric Europe B.V. The company reserves the right to make any variation in technical specification to the equipment described, or to withdraw or replace products without prior notification or public announcement. Mitsubishi Electric is constantly developing and improving its products. All descriptions, illustrations, drawings and specifications in this publication present only general particulars and shall not form part of any contract. All goods are supplied subject to the Company's General Conditions of Sale, a copy of which is available on request. Third-party product and brand names may be trademarks or registered trademarks of their respective owners.



Note: The fuse rating is for guidance only. Please refer to the relevant databook for detailed specification. It is the responsibility of a qualified electrician/electrical engineer to select the correct cable size and fuse rating based on current regulation and site specific conditions. Mitsubishi Electric's air conditioning and heat pump systems contain fluorinated greenhouse gases R410A, R407C and R134a.



[www.greengateway.mitsubishielectric.co.uk](http://www.greengateway.mitsubishielectric.co.uk)

Mitsubishi Electric UK's commitment to the environment

Follow us @meuk\_Jes  
Follow us @green\_gateway

Mitsubishi Electric  
Living Environmental Systems UK

YouTube  
mitsubishielectric2

Effective as of February 2016