

PARTS CATALOG R410A

[Model name]	[Service Ref.]
EHSC-MEC	EHSC-MEC.UK
EHSC-VM2C	EHSC-VM2C.UK
EHSC-VM2EC	EHSC-VM2EC.UK
EHSC-VM6C	EHSC-VM6C.UK
EHSC-VM6EC	EHSC-VM6EC.UK
EHSC-YM9C	EHSC-YM9C.UK
EHSC-YM9EC	EHSC-YM9EC.UK
EHSC-TM9C	EHSC-TM9C.UK
EHSD-MC	EHSD-MC.UK
EHSD-MEC	EHSD-MEC.UK
EHSD-VM2C	EHSD-VM2C.UK
EHSD-YM9C	EHSD-YM9C.UK
ERSC-MEC	ERSC-MEC.UK
ERSC-VM2C	ERSC-VM2C.UK
ERSD-VM2C	ERSD-VM2C.UK
EHPX-VM2C	EHPX-VM2C.UK
EHPX-VM6C	EHPX-VM6C.UK
EHPX-YM9C	EHPX-YM9C.UK

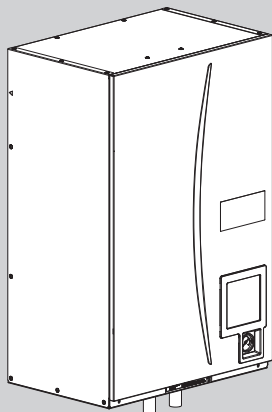
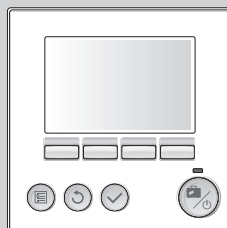
Revision:

- Added EHSD-MC.UK, EHSD-YM9C.UK and EHPX-VM6C.UK in REVISED EDITION-A.
- Some descriptions have been modified.

- Please void OCB571.

Note:

- RoHS compliant products have <G> mark on the spec name plate.

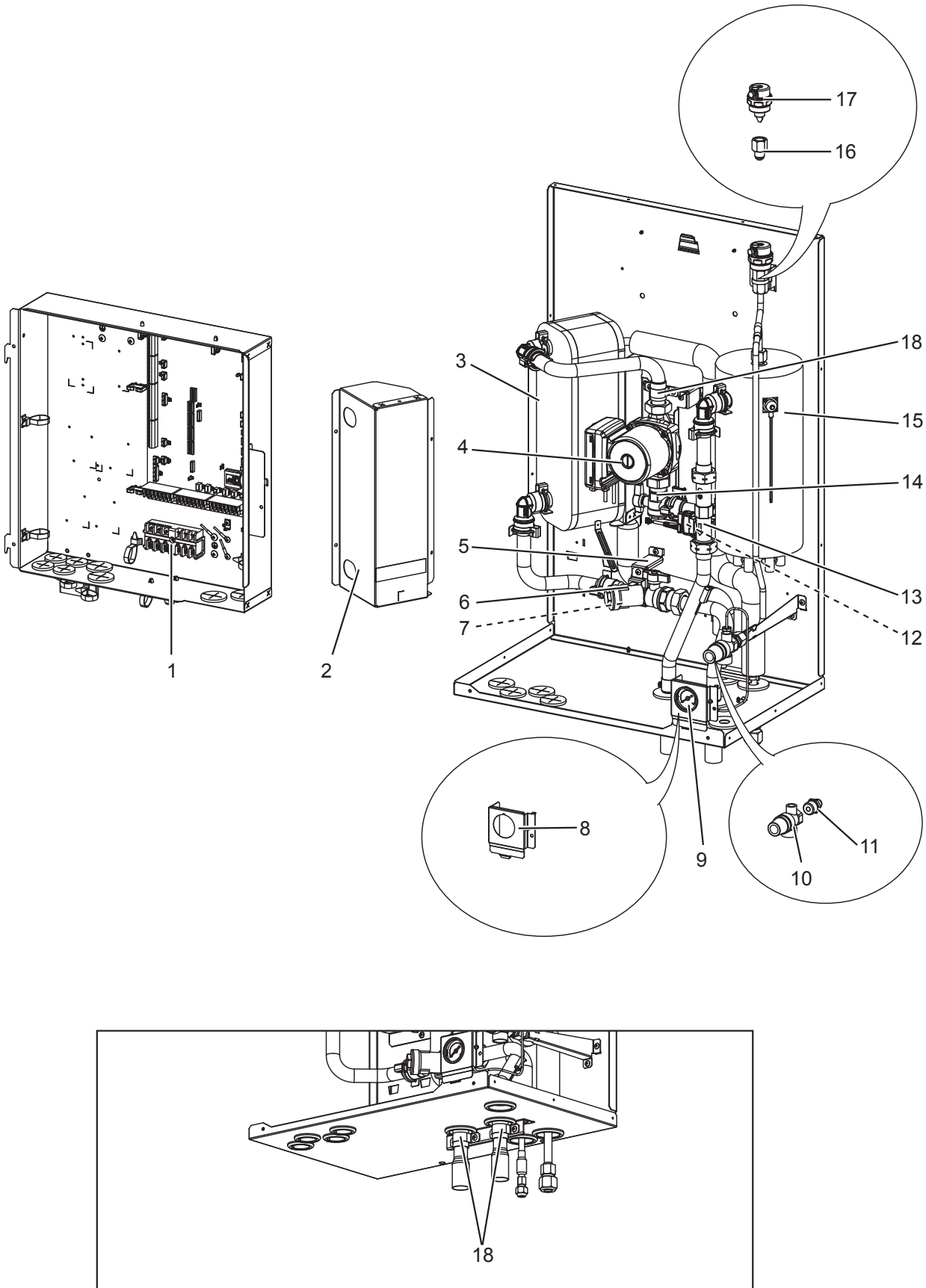

HYDROBOX

**MAIN REMOTE
CONTROLLER**

CONTENTS

1. RoHS PARTS LIST..... 2
2. OPTIONAL PARTS..... 34

SERVICE MANUAL (OCH571)

EHSD-MEC.UK



RoHS PARTS LIST

No.	RoHS	Part No.	Parts name	Specification	Q'ty/unit	Remarks	Wiring diagram symbol	Required regular replacement (*: Required regular inspection)
					EHSD-MEC.UK			
1	G	S70 C20 515	TERMINAL BED	6P	1	(#250LNE+S123)		
2	G	—	WATER COIL COVER		1	BK00R988G01		
3	G	S70 C45 408	WATER COIL ASSY (2HP HEATING ONLY)	MWA1	1			
4	G	S70 C07 355	WATER PUMP		1		MP1	20,000 hrs (3 years)(*)
5	G	—	STRAINER SUPPORT		1	BK02R947G01		
6	G	S70 C25 452	STRAINER VALVE (TYPE 2)		1			
7	G	S70 C28 460	STRAINER PACKING		1			
8	G	S70 C60 206	MANOMETER HOLDER		1			
9	G	S70 C20 205	MANOMETER		1			6 years
10	G	S70 C18 404	PRESSURE RELIEF VALVE	3bar	1			6 years
11	G	S70 C60 096	FLARE JOINT	3/8F - R1/2	1			
12	G	S70 C10 358	DRAIN COCK (WATER CAP ASSY320)		1	FOR PRIMARY CIRCUIT		6 years
13	G	S70 C54 266	FLOW SENSOR		1			
14	G	S70 C30 356	PUMP VALVE		1			
15	G	S70 C25 441	BOOSTER HEATER	0 kW	1			
16	G	S70 C50 096	FLARE JOINT	3/8F - G3/8	1			
17	G	S70 C17 150	AIR VENT (AUTOMATIC)		1			6 years
18	G	—	SADDLE BAND		3	BK02F262G01		
①9	G	—	HEATER STAY		1	BK00F852G01		
②0	G	S70 C23 460	O-RING		11	BLACK		
②1	G	S70 C10 465	FASTENER		9	FOR QUICK CONNECTION		
②2	G	S70 C01 800	GREASE		9 *	FOR QUICK CONNECTION		

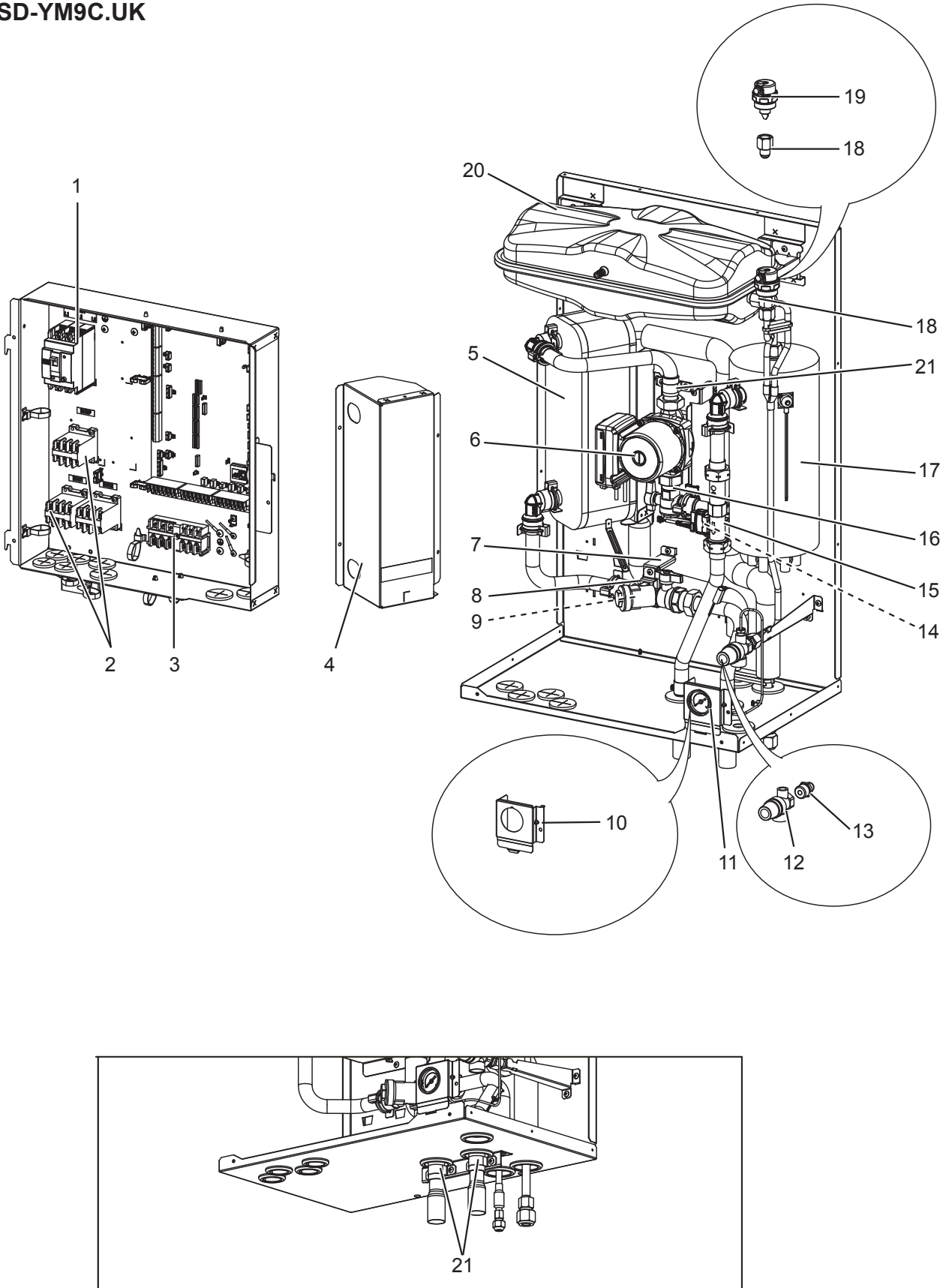
Parts number that is circled is not shown in the figure.

Do not reuse the O-ring or strainer packing that was once removed, but be sure to replace with a new one.

* Apply grease appropriately on the O-ring for the quick connection in the unit. For more details, refer to the page 78 in installation manual.

RoHS PARTS LIST

EHSD-MC.UK
EHSD-VM2C.UK
EHSD-YM9C.UK



RoHS PARTS LIST

No.	RoHS	Part No.	Parts name	Specification	Q'ty/unit			Remarks	Wiring diagram symbol	Required regular replacement (*: Required regular inspection)
					EHSD-MC.UK	EHSD-VM2C.UK	EHSD-YM9C.UK			
1	G	S70 C20 239	EARTH LEAKAGE BREAKER	1 ϕ 20A		1		ECB1		
	G	S70 C70 239	EARTH LEAKAGE BREAKER	3 ϕ 30A			1	ECB1		
2	G	S70 C39 708	CONTACTOR	30A		2	3	BHC1,BHC2		
3	G	S70 C20 515	TERMINAL BED	6P	1	1	1	(#250LNE+S123)		
4	G	—	WATER COIL COVER		1	1	1	BK00R988G01		
5	G	S70 C45 408	WATER COIL ASSY (2HP HEATING ONLY)	MWA1	1	1	1			
6	G	S70 C07 355	WATER PUMP		1	1	1	MP1	20,000 hrs (3 years)(*)	
7	G	—	STRAINER SUPPORT		1	1	1	BK02R947G01		
8	G	S70 C25 452	STRAINER VALVE (TYPE 2)		1	1	1			
9	G	S70 C28 460	STRAINER PACKING		1	1	1			
10	G	S70 C60 206	MANOMETER HOLDER		1	1	1			
11	G	S70 C20 205	MANOMETER		1	1	1		6 years	
12	G	S70 C18 404	PRESSURE RELIEF VALVE	3bar	1	1	1		6 years	
13	G	S70 C60 096	FLARE JOINT	3/8F - R1/2	1	1	1			
14	G	S70 C10 358	DRAIN COCK (WATER CAP ASSY320)		1	1	1	FOR PRIMARY CIRCUIT	6 years	
15	G	S70 C54 266	FLOW SENSOR		1	1	1			
16	G	S70 C30 356	PUMP VALVE		1	1	1			
17	G	S70 C21 441	BOOSTER HEATER	1 ϕ 230V 2kW		1		BH1		
	G	S70 C23 441	BOOSTER HEATER	3 ϕ 400V 9kW			1	BH1, BH2		
	G	S70 C25 441	BOOSTER HEATER	0kW	1					
18	G	S70 C50 096	FLARE JOINT	3/8F - G3/8	2	2	2			
19	G	S70 C17 150	AIR VENT (AUTOMATIC)		1	1	1		6 years	
20	G	S70 C16 402	EXPANSION VESSEL	10L	1	1	1			
21	G	—	SADDLE BAND		3	3	3	BK02F262G01		
(22)	G	—	HEATER STAY		1	1	1	BK00F852G01		
(23)	G	S70 C23 460	O-RING		11	11	11	BLACK		
(24)	G	S70 C10 465	FASTENER		9	9	9	FOR QUICK CONNECTION		
(25)	G	S70 C01 800	GREASE		9*	9*	9*	FOR QUICK CONNECTION		

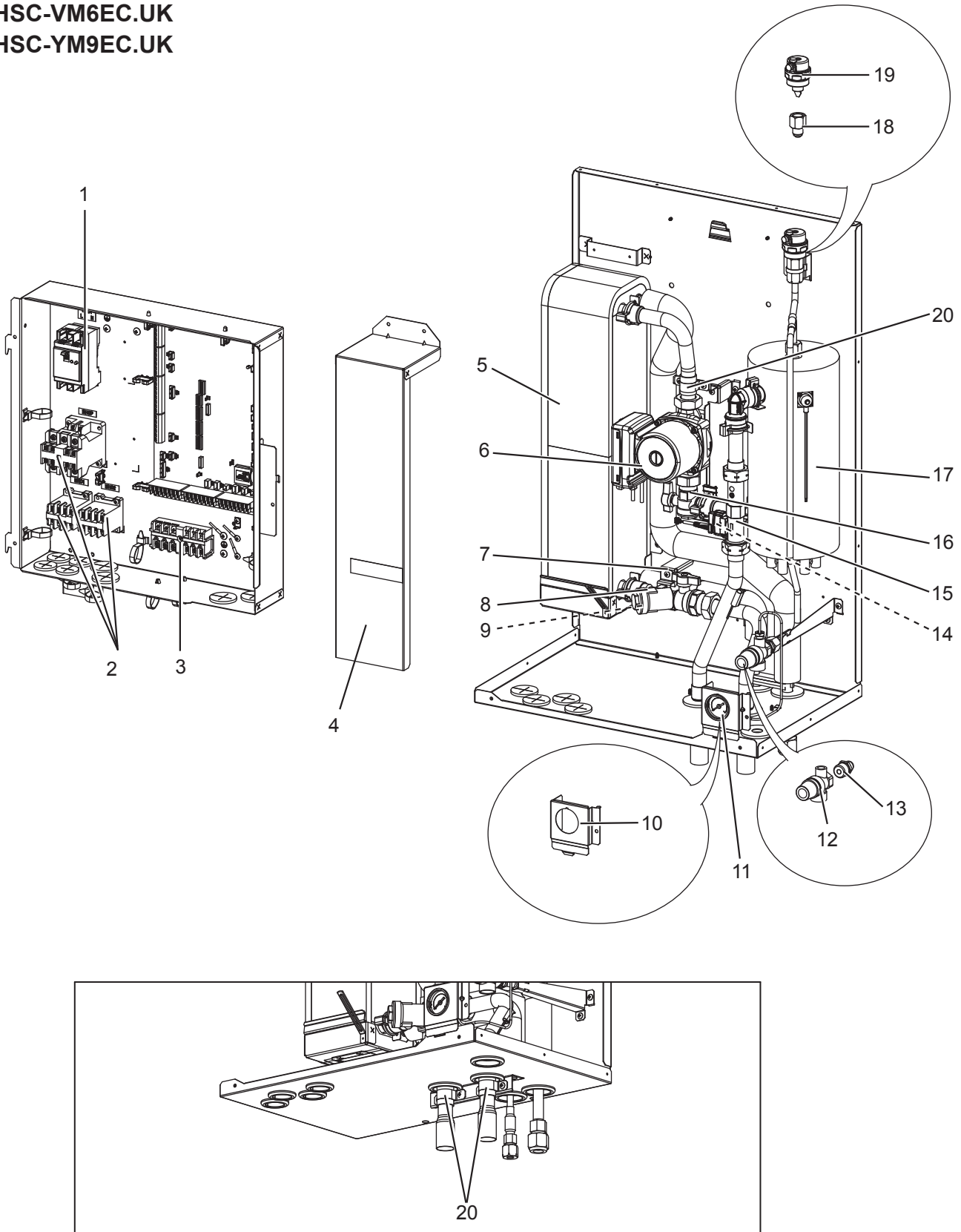
Parts number that is circled is not shown in the figure.

Do not reuse the O-ring or strainer packing that was once removed, but be sure to replace with a new one.

* Apply grease appropriately on the O-ring for the quick connection in the unit.

RoHS PARTS LIST

EHSC-MEC.UK
EHSC-VM2EC.UK
EHSC-VM6EC.UK
EHSC-YM9EC.UK



RoHS PARTS LIST

No.	ROHS	Part No.	Parts name	Specification	Q'ty/unit				Remarks	Wiring diagram symbol	Required regular replacement (*: Required regular inspection)
					EHSC-MEC.UK	EHSC-VM2EC.UK	EHSC-VM6EC.UK	EHSC-VM9EC.UK			
1	G	S70 C20 239	EARTH LEAKAGE BREAKER	1 ϕ 20A		1				ECB1	
	G	S70 C60 239	EARTH LEAKAGE BREAKER	1 ϕ 40A			1			ECB1	
	G	S70 C70 239	EARTH LEAKAGE BREAKER	3 ϕ 30A				1		ECB1	
2	G	S70 C39 708	CONTACTOR	30A		2	2	3		BHCP, BHC1,BHC2	
	G	S70 C29 708	CONTACTOR	45A			1			BHCP	
3	G	S70 C20 515	TERMINAL BED	6P	1	1	1	1	(#250LNE+S123)		
4	G	—	WATER COIL COVER		1	1	1	1	BK00R990G01		
5	G	S70 C25 408	WATER COIL ASSY (5HP HEATING ONLY)	MWA2	1	1	1	1			
6	G	S70 C07 355	WATER PUMP		1	1	1	1		MP1	20,000 hrs (3 years)(*)
7	G	—	STRAINER SUPPORT		1	1	1	1	BK02R947G01		
8	G	S70 C25 452	STRAINER VALVE (TYPE 2)		1	1	1	1			
9	G	S70 C28 460	STRAINER PACKING		1	1	1	1			
10	G	S70 C60 206	MANOMETER HOLDER		1	1	1	1			
11	G	S70 C20 205	MANOMETER		1	1	1	1			6 years
12	G	S70 C18 404	PRESSURE RELIEF VALVE	3bar	1	1	1	1			6 years
13	G	S70 C60 096	FLARE JOINT	3/8F - R1/2	1	1	1	1			
14	G	S70 C10 358	DRAIN COCK (WATER CAP ASSY320)		1	1	1	1	FOR PRIMARY CIRCUIT		6 years
15	G	S70 C54 266	FLOW SENSOR		1	1	1	1			
16	G	S70 C30 356	PUMP VALVE		1	1	1	1			
17	G	S70 C25 441	BOOSTER HEATER	0kW	1						
	G	S70 C21 441	BOOSTER HEATER	1 ϕ 230V 2kW		1				BH1	
	G	S70 C22 441	BOOSTER HEATER	1 ϕ 230V 6kW			1			BH1, BH2	
	G	S70 C23 441	BOOSTER HEATER	3 ϕ 400V 9kW				1		BH1, BH2	
18	G	S70 C50 096	FLARE JOINT	3/8F - G3/8	1	1	1	1			
19	G	S70 C17 150	AIR VENT (AUTOMATIC)		1	1	1	1			6 years
20	G	—	SADDLE BAND		3	3	3	3	BK02F262G01		
⑳	G	—	HEATER STAY		1	1	1	1	BK00F852G01		
㉑	G	S70 C23 460	O-RING		8	8	8	8	BLACK		
㉒	G	S70 C10 465	FASTENER		6	6	6	6	FOR QUICK CONNECTION		
㉓	G	S70 C01 800	GREASE		6 *	6 *	6 *	6 *	FOR QUICK CONNECTION		

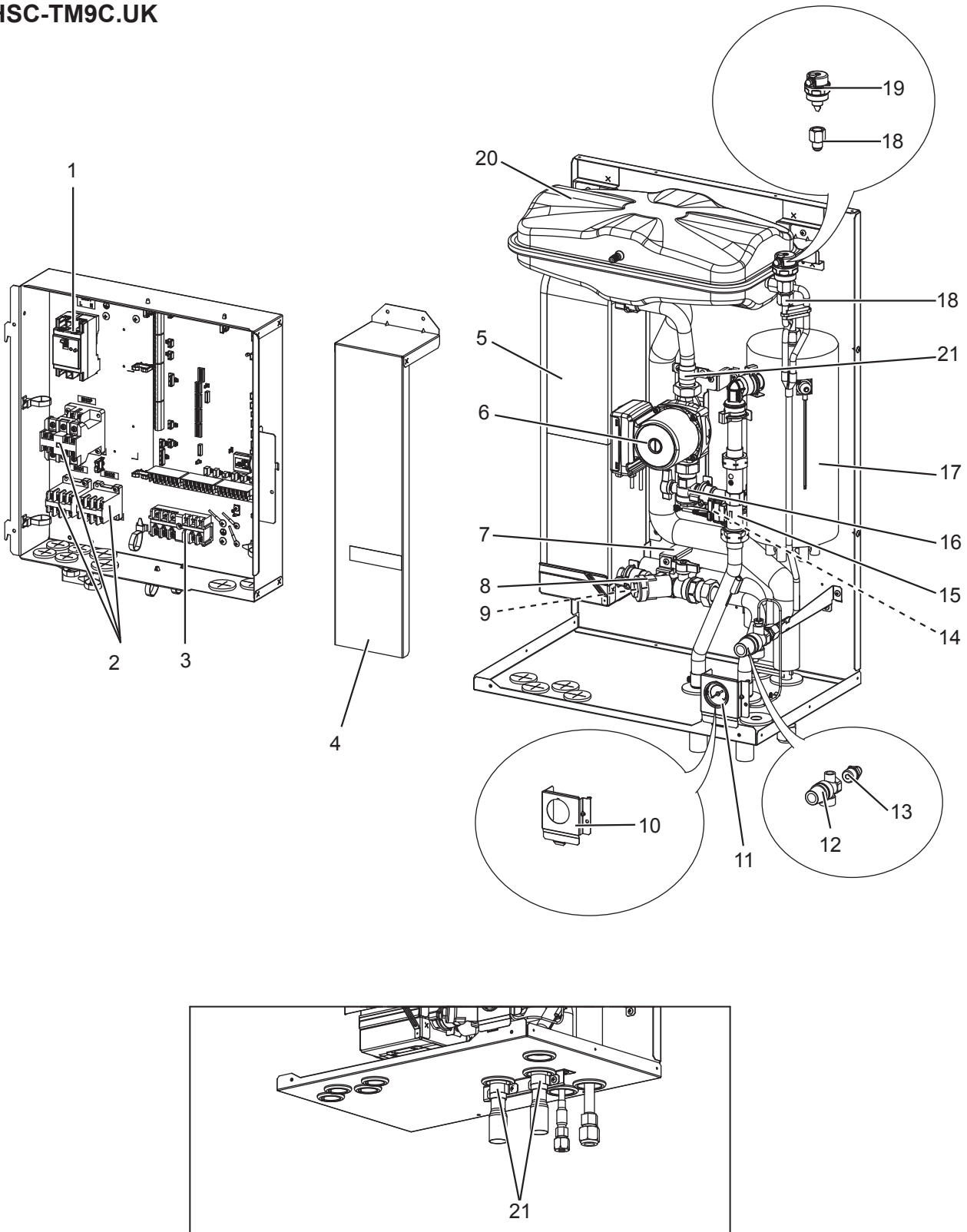
Parts number that is circled is not shown in the figure.

Do not reuse the O-ring or strainer packing that was once removed, but be sure to replace with a new one.

* Apply grease appropriately on the O-ring for the quick connection in the unit.

RoHS PARTS LIST

EHSC-VM2C.UK
EHSC-VM6C.UK
EHSC-YM9C.UK
EHSC-TM9C.UK



RoHS PARTS LIST

No.	RoHS	Part No.	Parts name	Specification	Q'ty/unit				Remarks	Wiring diagram symbol	Required regular replacement (*: Required regular inspection)
					EHSC-VM2C.UK	EHSC-VM6C.UK	EHSC-VM9C.UK	EHSC-TM9C.UK			
1	G	S70 C20 239	EARTH LEAKAGE BREAKER	1 ϕ 20A	1					ECB1	
	G	S70 C60 239	EARTH LEAKAGE BREAKER	1 ϕ 40A		1				ECB1	
	G	S70 C70 239	EARTH LEAKAGE BREAKER	3 ϕ 30A			1	1		ECB1	
2	G	S70 C39 708	CONTACTOR	30A	2	2	3	2		BHCP, BHC1,BHC2	
	G	S70 C29 708	CONTACTOR	45A		1		1		BHCP	
3	G	S70 C20 515	TERMINAL BED	6P	1	1	1	1	(#250LNE+S123)		
4	G	—	WATER COIL COVER		1	1	1	1	BK00R990G01		
5	G	S70 C25 408	WATER COIL ASSY (5HP HEATING ONLY)	MWA2	1	1	1	1			
6	G	S70 C07 355	WATER PUMP		1	1	1	1		MP1	20,000 hrs (3 years)(*)
7	G	—	STRAINER SUPPORT		1	1	1	1	BK02R947G01		
8	G	S70 C25 452	STRAINER VALVE (TYPE 2)		1	1	1	1			
9	G	S70 C28 460	STRAINER PACKING		1	1	1	1			
10	G	S70 C60 206	MANOMETER HOLDER		1	1	1	1			
11	G	S70 C20 205	MANOMETER		1	1	1	1			6 years
12	G	S70 C18 404	PRESSURE RELIEF VALVE	3bar	1	1	1	1			6 years
13	G	S70 C60 096	FLARE JOINT	3/8F - R1/2	1	1	1	1			
14	G	S70 C10 358	DRAIN COCK (WATER CAP ASSY320)		1	1	1	1	FOR PRIMARY CIRCUIT		6 years
15	G	S70 C54 266	FLOW SENSOR		1	1	1	1			
16	G	S70 C30 356	PUMP VALVE		1	1	1	1			
17	G	S70 C21 441	BOOSTER HEATER	1 ϕ 230V 2kW	1					BH1	
	G	S70 C22 441	BOOSTER HEATER	1 ϕ 230V 6kW		1				BH1, BH2	
	G	S70 C23 441	BOOSTER HEATER	3 ϕ 400V 9kW			1			BH1, BH2	
	G	S70 C24 441	BOOSTER HEATER	3 ϕ 230V 9kW				1		BH1, BH2	
18	G	S70 C50 096	FLARE JOINT	3/8F - G3/8	2	2	2	2			
19	G	S70 C17 150	AIR VENT (AUTOMATIC)		1	1	1	1			6 years
20	G	S70 C16 402	EXPANSION VESSEL	10L	1	1	1	1			
21	G	—	SADDLE BAND		3	3	3	3	BK02F262G01		
(22)	G	—	HEATER STAY		1	1	1	1	BK00F852G01		
(23)	G	S70 C23 460	O-RING		8	8	8	8	BLACK		
(24)	G	S70 C10 465	FASTENER		6	6	6	6	FOR QUICK CONNECTION		
(25)	G	S70 C01 800	GREASE		6 *	6 *	6 *	6 *	FOR QUICK CONNECTION		

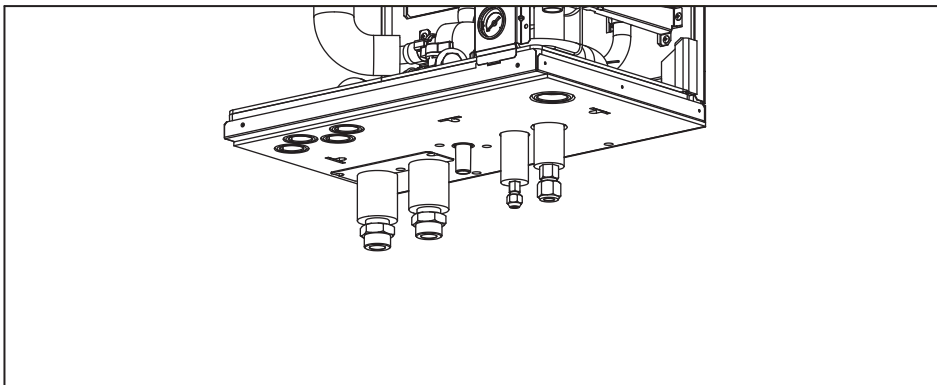
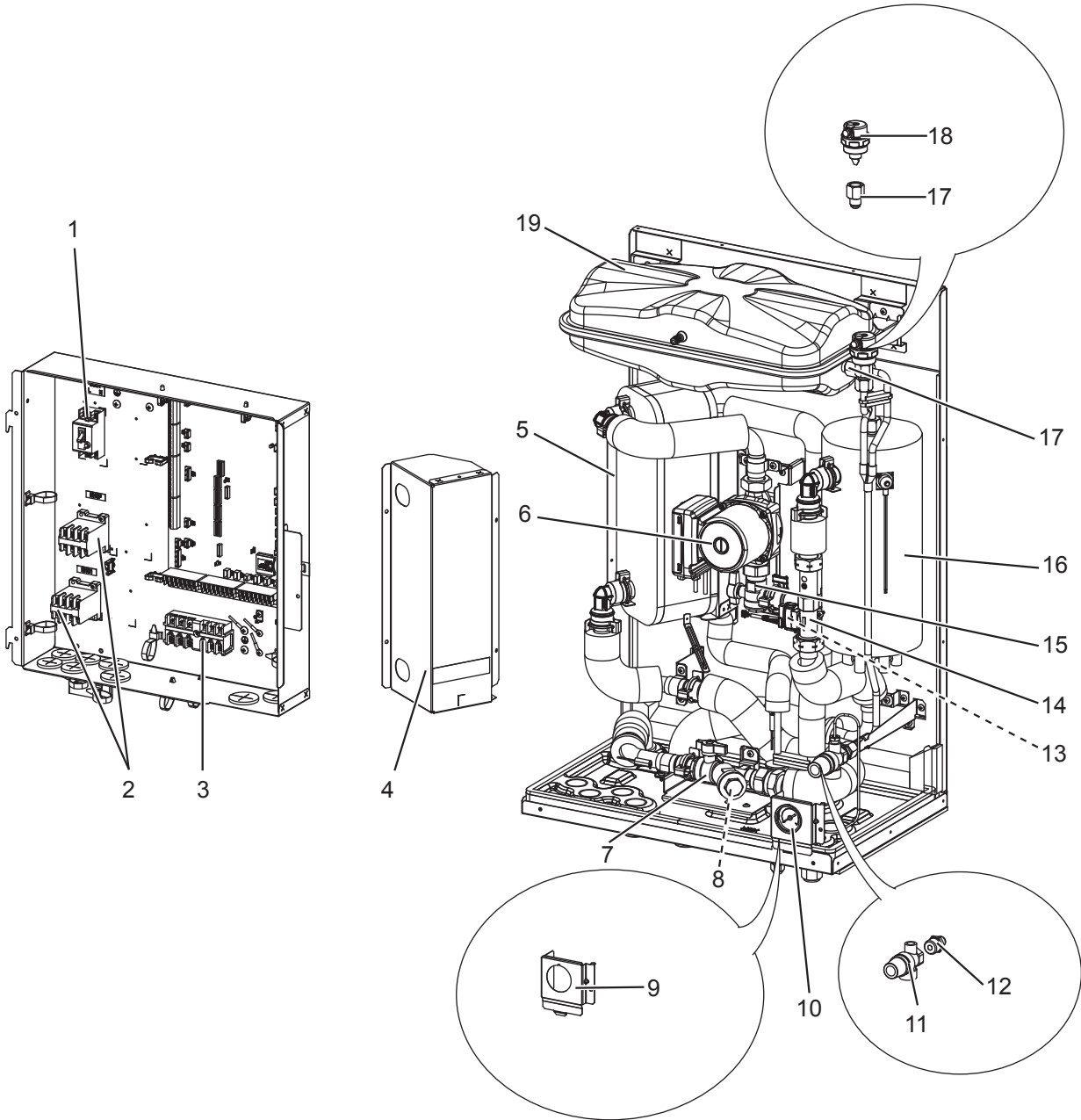
Parts number that is circled is not shown in the figure.

Do not reuse the O-ring or strainer packing that was once removed, but be sure to replace with a new one.

* Apply grease appropriately on the O-ring for the quick connection in the unit.

RoHS PARTS LIST

ERSD-VM2C.UK



RoHS PARTS LIST

No.	RoHS	Part No.	Parts name	Specification	Q'ty/unit	Remarks	Wiring diagram symbol	Required regular replacement (*: Required regular inspection)
					ERSD-VM2C.UK			
1	G	S70 C20 239	EARTH LEAKAGE BREAKER	1 ϕ 20A	1		ECB1	
2	G	S70 C39 708	CONTACTOR	30A	2		BHC1,BHC2	
3	G	S70 C20 515	TERMINAL BED	6P	1	(#250LNE+S123)		
4	G	—	WATER COIL COVER		1	BK00R988G01		
5	G	S70 C15 408	WATER COIL ASSY (2HP HEATING & COOLING)	MWA1	1			
6	G	S70 C10 355	WATER PUMP		1		MP1	20,000 hrs (3 years)(*)
7	G	S70 C20 452	STRAINER VALVE (TYPE 1)		1			
8	G	S70 C28 460	STRAINER PACKING		1			
9	G	S70 C60 206	MANOMETER HOLDER		1			
10	G	S70 C20 205	MANOMETER		1			6 years
11	G	S70 C18 404	PRESSURE RELIEF VALVE	3bar	1			6 years
12	G	S70 C60 096	FLARE JOINT	3/8F - R1/2	1			
13	G	S70 C10 358	DRAIN COCK (WATER CAP ASSY320)		1	FOR PRIMARY CIRCUIT		6 years
14	G	S70 C54 266	FLOW SENSOR		1			
15	G	S70 C30 356	PUMP VALVE		1			
16	G	S70 C21 441	BOOSTER HEATER	1 ϕ 230V 2kW	1		BH1	
17	G	S70 C50 096	FLARE JOINT	3/8F - G3/8	2			
18	G	S70 C17 150	AIR VENT (AUTOMATIC)		1			6 years
19	G	S70 C16 402	EXPANSION VESSEL	10L	1			
⑳	G	—	SADDLE BAND		4	BK02F262G01		
㉑	G	—	HEATER STAY		1	BK00F852G02		
㉒	G	S70 C23 460	O-RING		12	BLACK		
㉓	G	S70 C10 465	FASTENER		10	FOR QUICK CONNECTION		
㉔	G	S70 C01 800	GREASE		10 *	FOR QUICK CONNECTION		

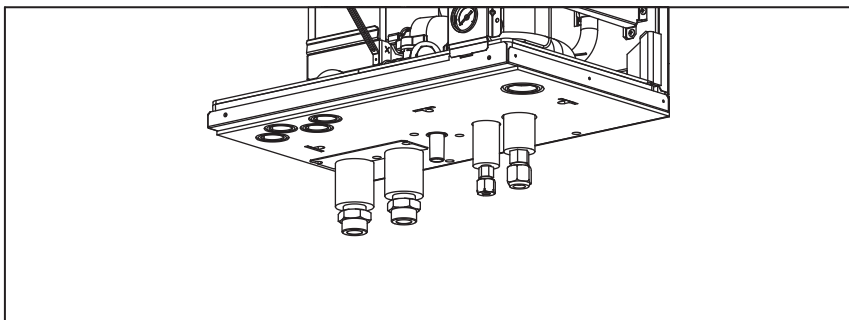
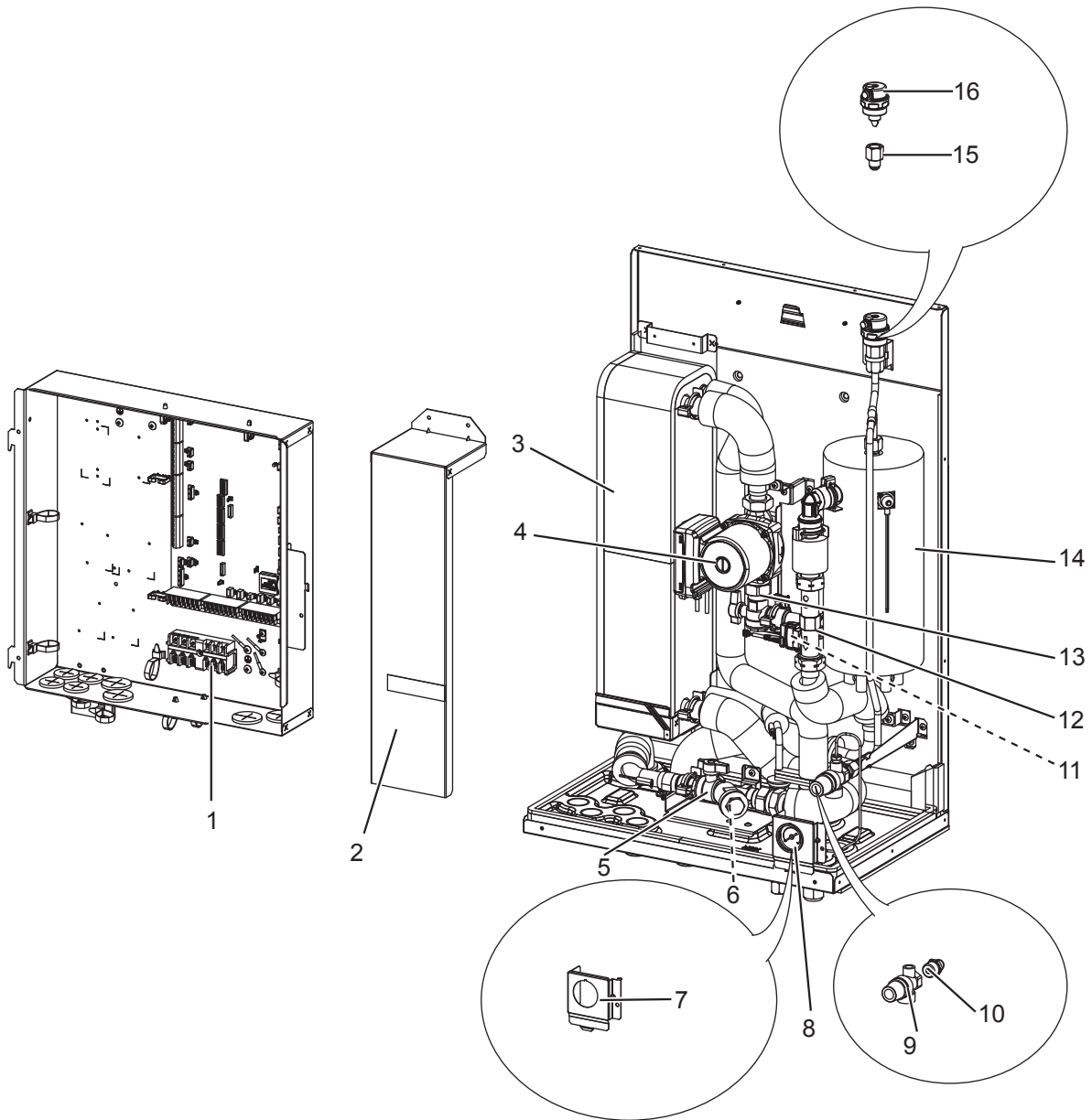
Parts number that is circled is not shown in the figure.

Do not reuse the O-ring or strainer packing that was once removed, but be sure to replace with a new one.

* Apply grease appropriately on the O-ring for the quick connection in the unit.

RoHS PARTS LIST

ERSC-MEC.UK



RoHS PARTS LIST

No.	RoHS	Part No.	Parts name	Specification	Q'ty/unit	Remarks	Wiring diagram symbol	Required regular replacement (*: Required regular inspection)
					ERSC-MEC.UK			
1	G	S70 C20 515	TERMINAL BED	6P	1	(#250LNE+S123)		
2	G	—	WATER COIL COVER		1	BK00R990G01		
3	G	S70 C35 408	WATER COIL ASSY (5HP HEATING & COOLING)	MWA2	1			
4	G	S70 C10 355	WATER PUMP		1		MP1	20,000 hrs (3 years)(*)
5	G	S70 C20 452	STRAINER VALVE (TYPE 1)		1			
6	G	S70 C28 460	STRAINER PACKING		1			
7	G	S70 C60 206	MANOMETER HOLDER		1			
8	G	S70 C20 205	MANOMETER		1			6 years
9	G	S70 C18 404	PRESSURE RELIEF VALVE	3bar	1			6 years
10	G	S70 C60 096	FLARE JOINT	3/8F - R1/2	1			
11	G	S70 C10 358	DRAIN COCK (WATER CAP ASSY320)		1	FOR PRIMARY CIRCUIT		6 years
12	G	S70 C54 266	FLOW SENSOR		1			
13	G	S70 C30 356	PUMP VALVE		1			
14	G	S70 C25 441	BOOSTER HEATER	0kW	1		BH1	
15	G	S70 C50 096	FLARE JOINT	3/8F - G3/8	1			
16	G	S70 C17 150	AIR VENT (AUTOMATIC)		1			6 years
⑰	G	—	SADDLE BAND		3	BK02F262G01		
⑱	G	—	HEATER STAY		1	BK00F852G02		
⑲	G	S70 C23 460	O-RING		9	BLACK		
⑳	G	S70 C10 465	FASTENER		7	FOR QUICK CONNECTION		
㉑	G	S70 C01 800	GREASE		7 *	FOR QUICK CONNECTION		

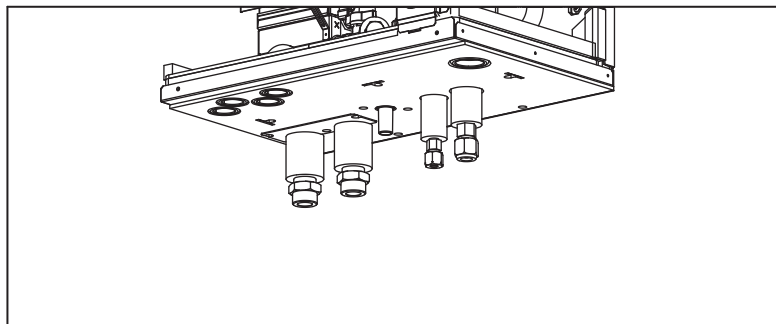
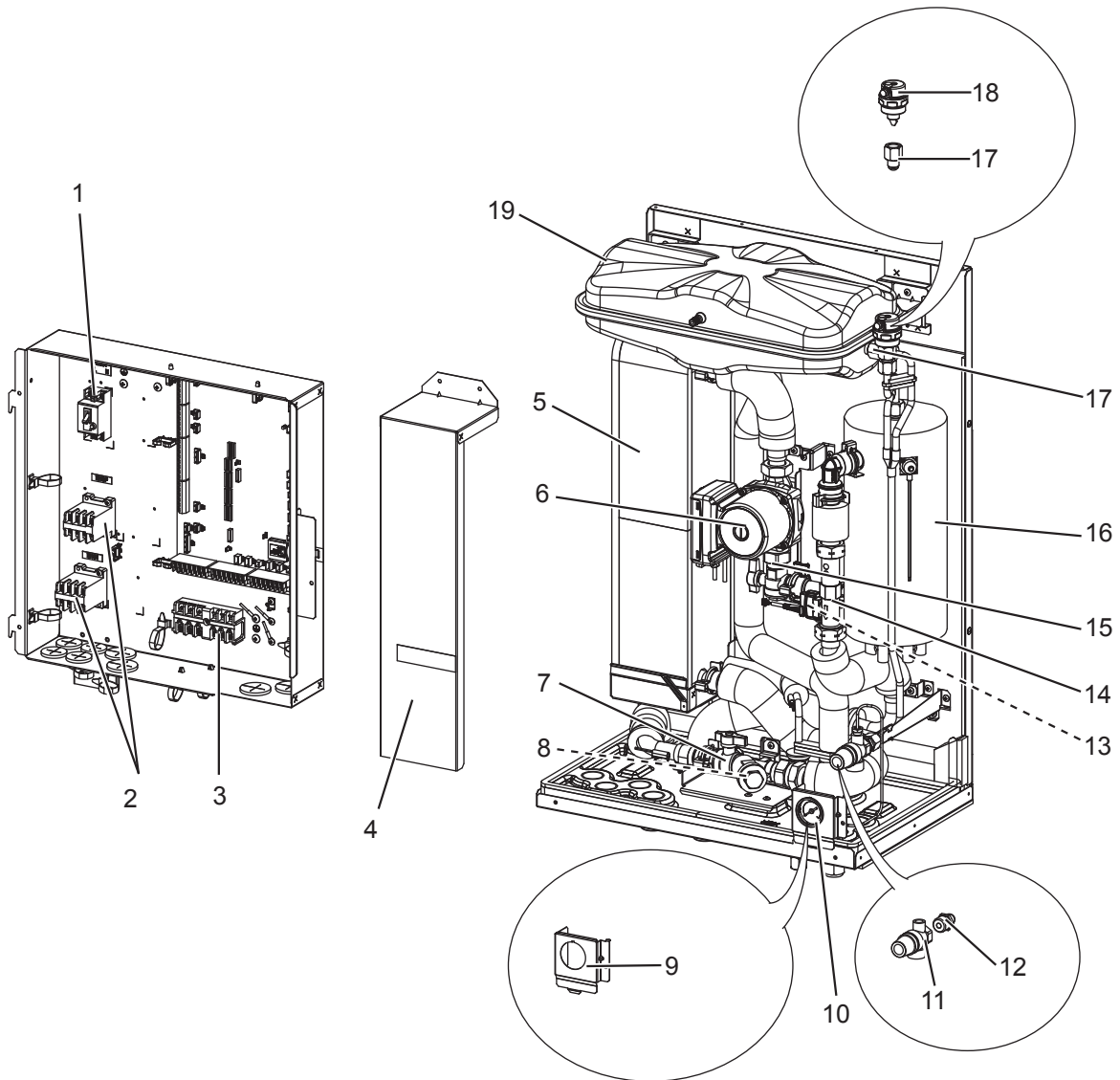
Parts number that is circled is not shown in the figure.

Do not reuse the O-ring or strainer packing that was once removed, but be sure to replace with a new one.

* Apply grease appropriately on the O-ring for the quick connection in the unit.

RoHS PARTS LIST

ERSC-VM2C.UK



RoHS PARTS LIST

No.	RoHS	Part No.	Parts name	Specification	Q'ty/unit	Remarks	Wiring diagram symbol	Required regular replacement (*: Required regular inspection)
					ERSC-VM2C.UK			
1	G	S70 C20 239	EARTH LEAKAGE BREAKER	1 ϕ 20A	1		ECB1	
2	G	S70 C39 708	CONTACTOR	30A	2		BHC1,BHC2	
3	G	S70 C20 515	TERMINAL BED	6P	1	(#250LNE+S123)		
4	G	—	WATER COIL COVER		1	BK00R988G01		
5	G	S70 C35 408	WATER COIL ASSY (5HP HEATING & COOLING)	MWA2	1			
6	G	S70 C10 355	WATER PUMP		1		MP1	20,000 hrs (3 years)(*)
7	G	S70 C20 452	STRAINER VALVE (TYPE 1)		1			
8	G	S70 C28 460	STRAINER PACKING		1			
9	G	S70 C20 205	MANOMETER		1			6 years
10	G	S70 C60 206	MANOMETER HOLDER		1			
11	G	S70 C18 404	PRESSURE RELIEF VALVE	3bar	1			6 years
12	G	S70 C60 096	FLARE JOINT	3/8F - R1/2	1			
13	G	S70 C10 358	DRAIN COCK (WATER CAP ASSY320)		1	FOR PRIMARY CIRCUIT		6 years
14	G	S70 C54 266	FLOW SENSOR		1			
15	G	S70 C30 356	PUMP VALVE		1			
16	G	S70 C21 441	BOOSTER HEATER	1 ϕ 230V 2kW	1		BH1	
17	G	S70 C50 096	FLARE JOINT	3/8F - G3/8	2			
18	G	S70 C17 150	AIR VENT (AUTOMATIC)		1			6 years
19	G	S70 C16 402	EXPANSION VESSEL	10L	1			
⑳	G	—	SADDLE BAND		3	BK02F262G01		
㉑	G	—	HEATER STAY		1	BK00F852G02		
㉒	G	S70 C23 460	O-RING		9	BLACK		
㉓	G	S70 C10 465	FASTENER		7	FOR QUICK CONNECTION		
㉔	G	S70 C01 800	GREASE		7 *	FOR QUICK CONNECTION		

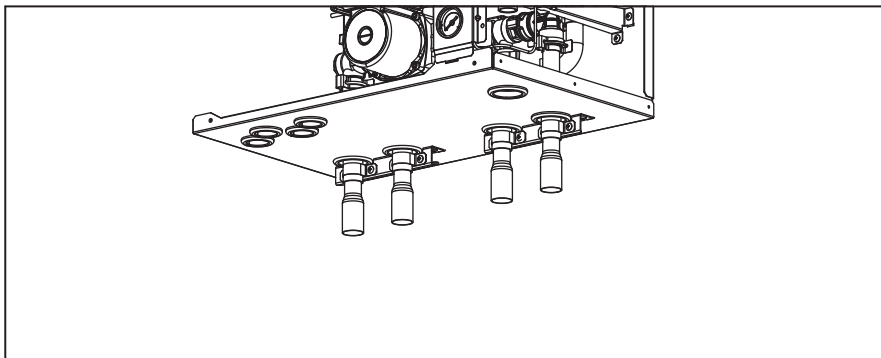
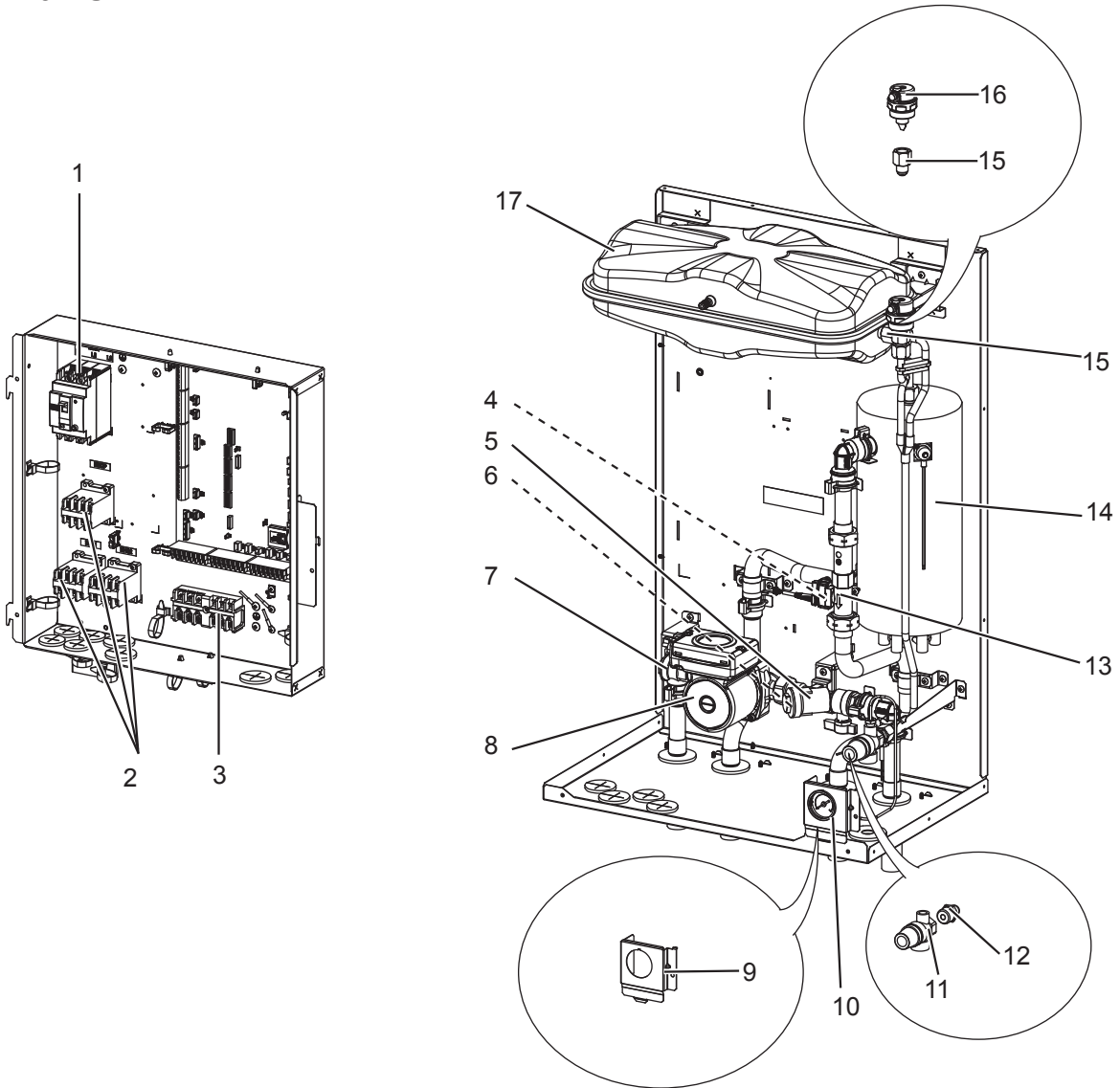
Parts number that is circled is not shown in the figure.

Do not reuse the O-ring or strainer packing that was once removed, but be sure to replace with a new one.

* Apply grease appropriately on the O-ring for the quick connection in the unit.

RoHS PARTS LIST

EHPX-VM2C.UK
EHPX-VM6C.UK
EHPX-YM9C.UK



RoHS PARTS LIST

No.	RoHS	Part No.	Parts name	Specification	Q'ty/unit			Remarks	Wiring diagram symbol	Required regular replacement (*: Required regular inspection)
					EHPX-VM2C.UK	EHPX-VM6C.UK	EHPX-VM9C.UK			
1	G	S70 C20 239	EARTH LEAKAGE BREAKER	1 ϕ 20A	1			ECB1		
	G	S70 C60 239	EARTH LEAKAGE BREAKER	1 ϕ 40A		1		ECB1		
	G	S70 C70 239	EARTH LEAKAGE BREAKER	3 ϕ 30A			1	ECB1		
2	G	S70 C39 708	CONTACTOR	30A	2	2	3	BHCP, BHC1,BHC2		
	G	S70 C29 708	CONTACTOR	45A		1		BHCP		
3	G	S70 C20 515	TERMINAL BED	6P	1	1	1	(#250LNE+S123)		
4	G	S70 C10 358	DRAIN COCK (WATER CAP ASSY320)		1	1	1	FOR PRIMARY CIRCUIT	6 years	
5	G	S70 C20 452	STRAINER VALVE (TYPE 1)		1	1	1			
6	G	S70 C28 460	STRAINER PACKING		1	1	1			
7	G	S70 C30 356	PUMP VALVE		1	1	1			
8	G	S70 C07 355	WATER PUMP		1	1	1	MP1	20,000 hrs (3 years)(*)	
9	G	S70 C60 206	MANOMETER HOLDER		1	1	1			
10	G	S70 C20 205	MANOMETER		1	1	1		6 years	
11	G	S70 C18 404	PRESSURE RELIEF VALVE	3bar	1	1	1		6 years	
12	G	S70 C60 096	FLARE JOINT	3/8F - R1/2	1	1	1			
13	G	S70 C54 266	FLOW SENSOR		1	1	1			
14	G	S70 C21 441	BOOSTER HEATER	1 ϕ 230V 2kW	1			BH1		
	G	S70 C22 441	BOOSTER HEATER	1 ϕ 230V 6kW		1		BH1, BH2		
	G	S70 C23 441	BOOSTER HEATER	3 ϕ 400V 9kW			1	BH1, BH2		
15	G	S70 C50 096	FLARE JOINT	3/8F - G3/8	2	2	2			
16	G	S70 C17 150	AIR VENT (AUTOMATIC)		1	1	1		6 years	
17	G	S70 C16 402	EXPANSION VESSEL	10L	1	1	1			
(18)	G	—	SADDLE BAND		6	6	6	BK02F262G01		
(19)	G	—	HEATER STAY		1	1	1	BK00F852G01		
(20)	G	S70 C23 460	O-RING		9	9	9	BLACK		
(21)	G	S70 C10 465	FASTENER		7	7	7	FOR QUICK CONNECTION		
(22)	G	S70 C01 800	GREASE		7 *	7 *	7 *	FOR QUICK CONNECTION		

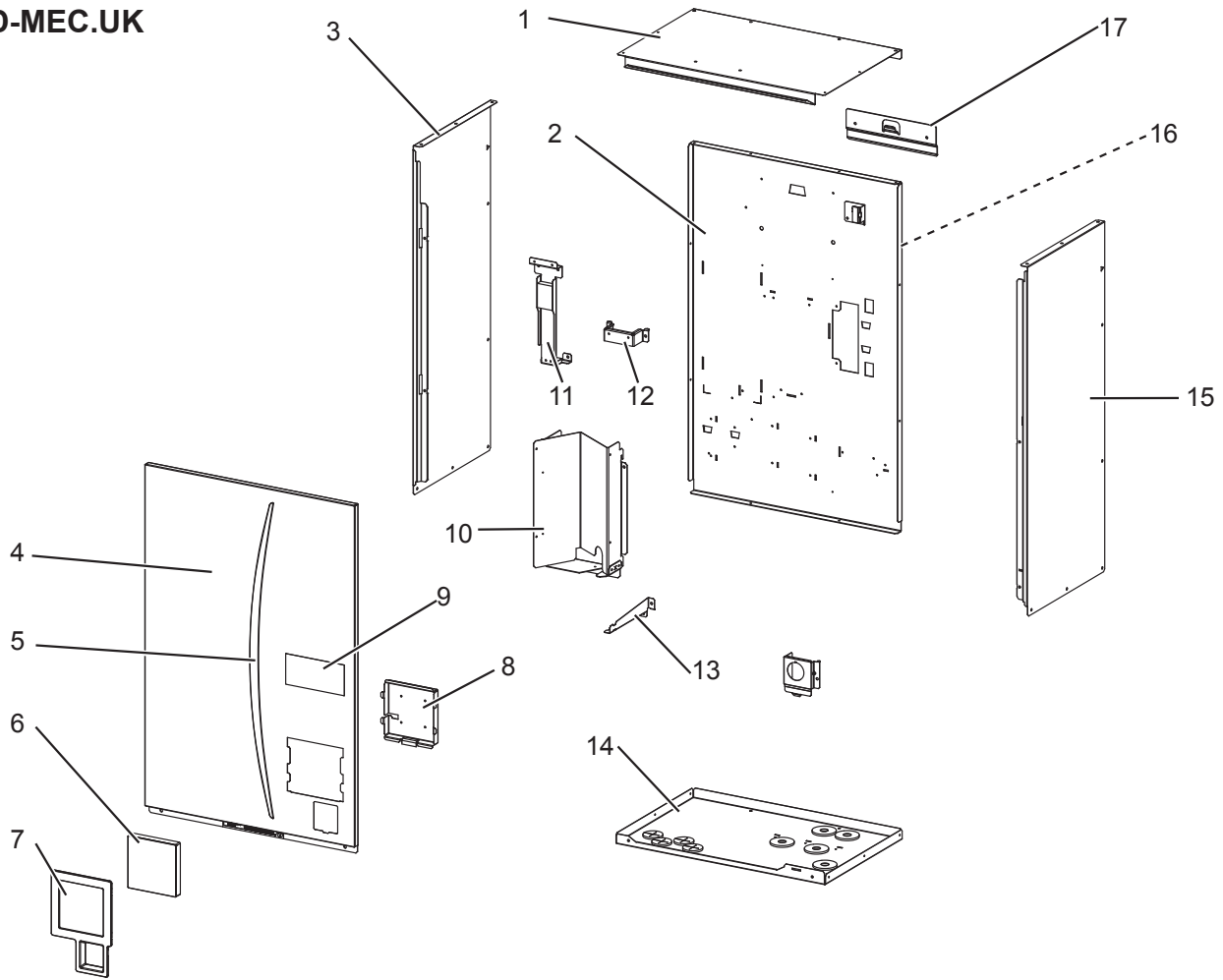
Parts number that is circled is not shown in the figure.

Do not reuse the O-ring or strainer packing that was once removed, but be sure to replace with a new one.

* Apply grease appropriately on the O-ring for the quick connection in the unit.

RoHS PARTS LIST

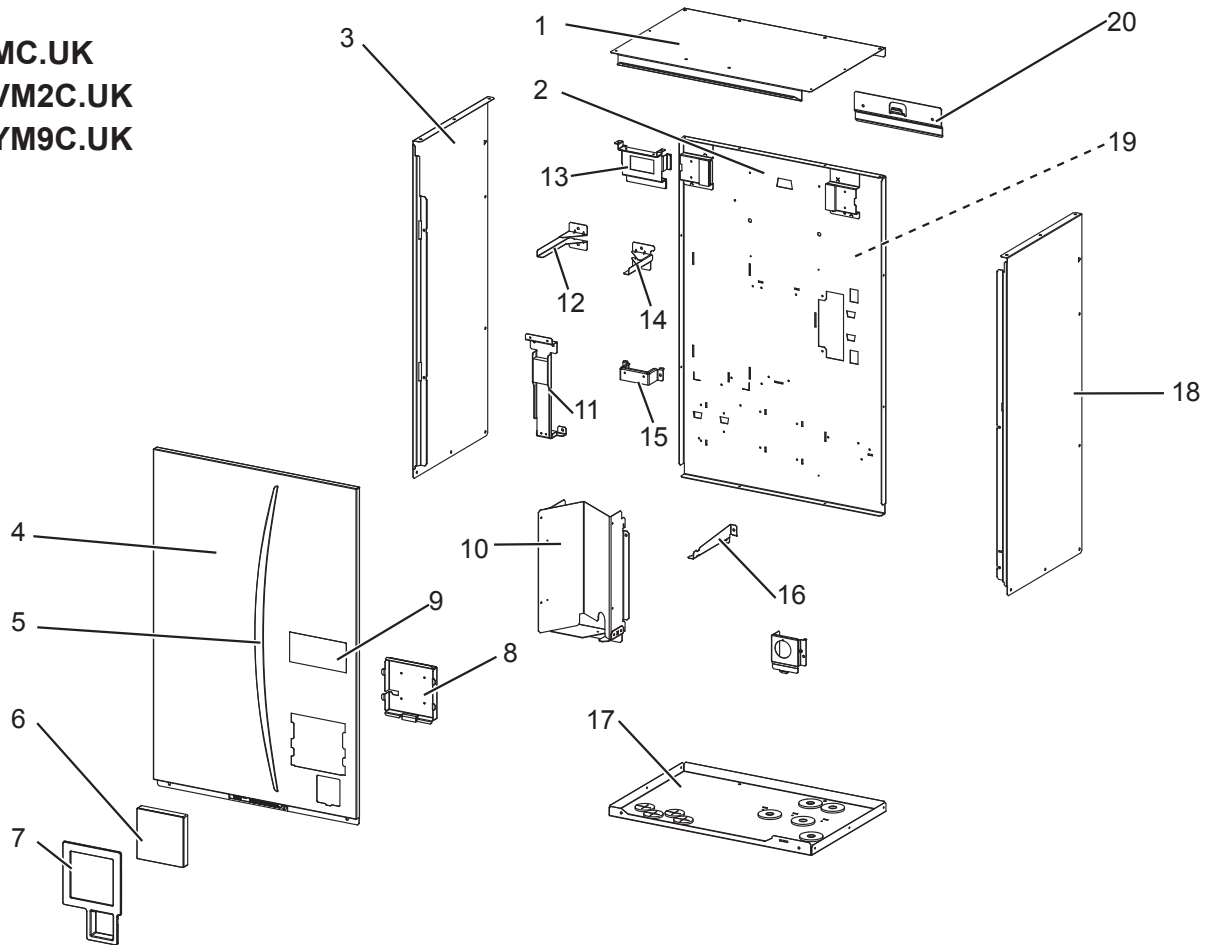
EHSD-MEC.UK



No.	RoHS	Part No.	Parts name	Specification	Q'ty /unit		Remarks
						EHSD-MEC.UK	
1	G	S70 C16 641	TOP PANEL ASSY			1	
2	G	S70 H05 661	BACK PANEL			1	
3	G	S70 C32 662	SIDE PANEL L			1	
4	G	S70 C25 668	FRONT PANEL ASSY			1	
5	G	S70 C30 699	FRONT PANEL GRAPHIC (LEAF LABEL)			1	
6	G	S70 C85 200	MAIN REMOTE CONTROLLER ASSY			1	
7	G	S70 C21 710	MAIN REMOTE CONTROLLER HOLDER			1	
8	G	—	MAIN REMOTE CONTROLLER SUPPORT			1	BK00R897G01
9	G	S70 C20 699	BRAND LABEL			1	
10	G	—	WATER COIL BASE			1	BK00R987G01
11	G	—	PUMP ASSY SUPPORT			1	BK02R939G01
12	G	—	PUMP SUPPORT			1	BK00R976G01
13	G	—	P.R.V. SUPPORT			1	BK02R938G01
14	G	S70 C19 686	BASE ASSY	WITH LABEL		1	
15	G	S70 C24 662	SIDE PANEL R			1	
16	G	—	BACK PANEL SUPPORT			1	BK02N513G01
17	G	S71 490 G01	BACK PANEL HOOK			1	
⑱	G	S70 H06 699	WIRING DIAGRAM & ELECTRIC NOTICE			1	

RoHS PARTS LIST

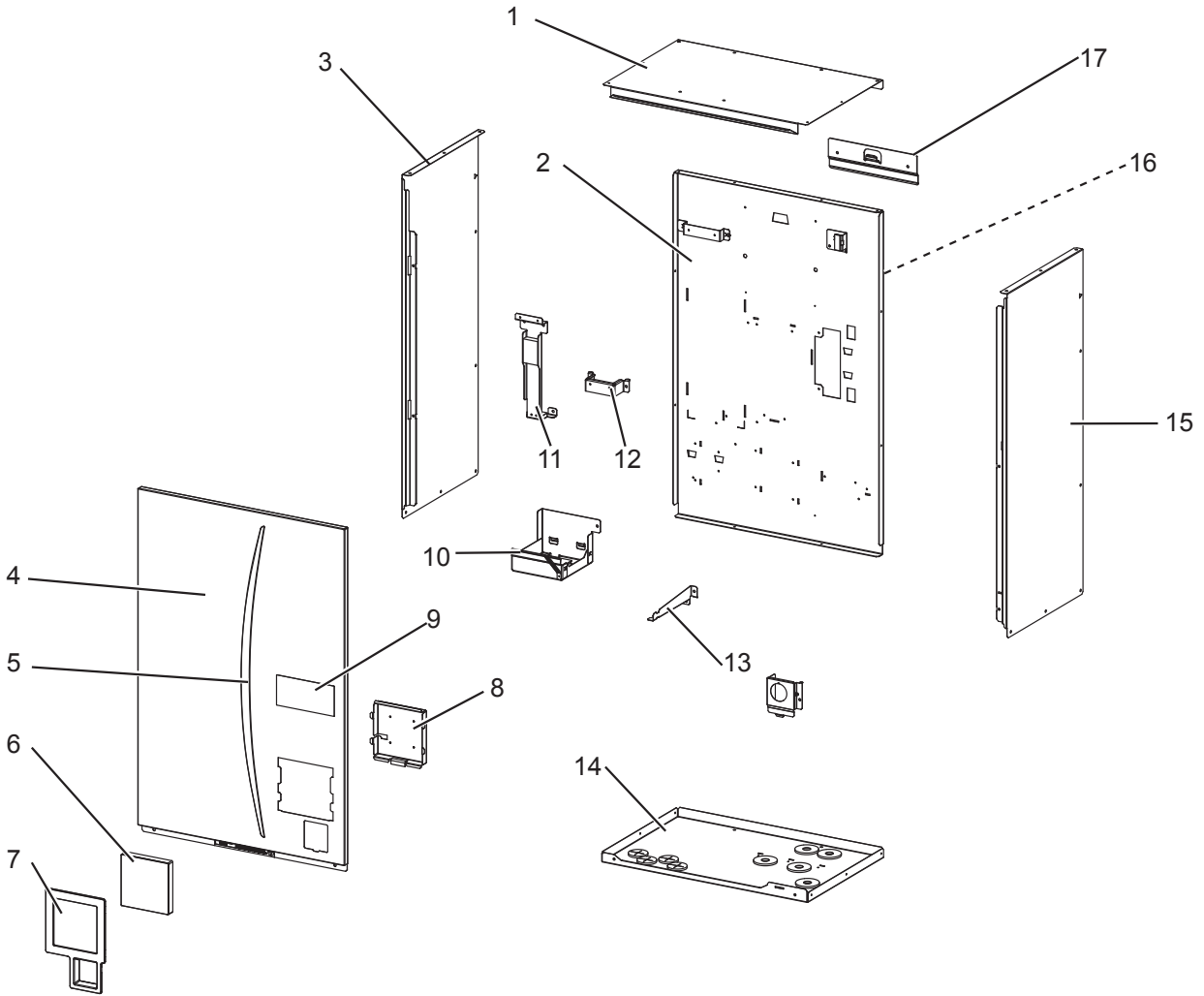
EHSD-MC.UK
EHSD-VM2C.UK
EHSD-YM9C.UK



No.	RoHS	Part No.	Parts name	Specifi- cation	Q'ty /unit			Remarks
					EHSD- MC.UK	EHSD- VM2C.UK	EHSD- YM9C.UK	
1	G	S70 C16 641	TOP PANEL ASSY		1	1	1	
2	G	S70 H06 661	BACK PANEL		1	1	1	
3	G	S70 C32 662	SIDE PANEL L		1	1	1	
4	G	S70 C25 668	FRONT PANEL ASSY		1	1	1	
5	G	S70 C30 699	FRONT PANEL GRAPHIC (LEAF LABEL)		1	1	1	
6	G	S70 C85 200	MAIN REMOTE CONTROLLER ASSY		1	1	1	
7	G	S70 C21 710	MAIN REMOTE CONTROLLER HOLDER		1	1	1	
8	G	—	MAIN REMOTE CONTROLLER SUPPORT		1	1	1	BK00R897G01
9	G	S70 C20 699	BRAND LABEL		1	1	1	
10	G	—	WATER COIL BASE		1	1	1	BK00R987G01
11	G	—	PUMP ASSY SUPPORT		1	1	1	BK02R939G01
12	G	—	EXPANSION VESSEL HOLDER(L)		1	1	1	BK02L229G08
13	G	—	EXPANSION VESSEL STAY		1	1	1	BK00L285G04
14	G	—	EXPANSION VESSEL HOLDER(R)		1	1	1	BK02L229G07
15	G	—	PUMP SUPPORT		1	1	1	BK00R976G01
16	G	—	P.R.V. SUPPORT		1	1	1	BK02R938G01
17	G	S70 C19 686	BASE ASSY	WITH LABEL	1	1	1	
18	G	S70 C23 662	SIDE PANEL R		1	1	1	
19	G	—	BACK PANEL SUPPORT		1	1	1	BK02N513G01
20	G	S71 490 G01	BACK PANEL HOOK		1	1	1	
21	G	S70 H06 699	WIRING DIAGRAM & ELECTRIC NOTICE		1			
	G	S70 H07 699	WIRING DIAGRAM & ELECTRIC NOTICE			1		
	G	S70 H09 699	WIRING DIAGRAM & ELECTRIC NOTICE				1	

RoHS PARTS LIST

EHSC-MEC.UK
EHSC-VM2EC.UK
EHSC-VM6EC.UK
EHSC-YM9EC.UK

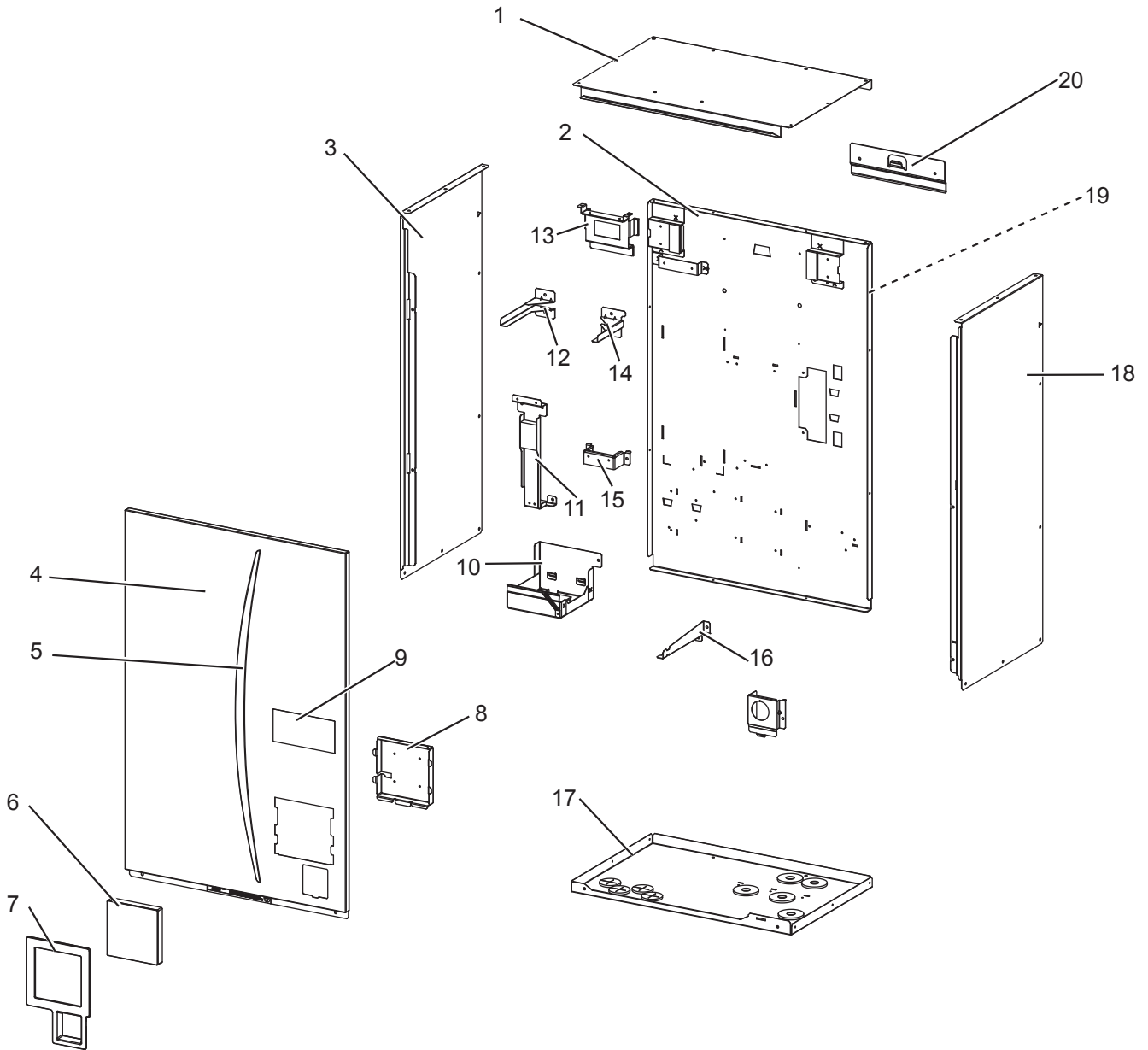


RoHS PARTS LIST

No.	RoHS	Part No.	Parts name	Specification	Q'ty /unit				Remarks
					EHSC-MEC.UK	EHSC-VM2EC.UK	EHSC-VM6EC.UK	EHSC-VM9EC.UK	
1	G	S70 C16 641	TOP PANEL ASSY		1	1	1	1	
2	G	S70 H07 661	BACK PANEL		1	1	1	1	
3	G	S70 C32 662	SIDE PANEL L		1	1	1	1	
4	G	S70 C25 668	FRONT PANEL ASSY		1	1	1	1	
5	G	S70 C30 699	FRONT PANEL GRAPHIC (LEAF LABEL)		1	1	1	1	
6	G	S70 C85 200	MAIN REMOTE CONTROLLER ASSY		1	1	1	1	
7	G	S70 C21 710	MAIN REMOTE CONTROLLER HOLDER		1	1	1	1	
8	G	—	MAIN REMOTE CONTROLLER SUPPORT		1	1	1	1	BK00R897G01
9	G	S70 C20 699	BRAND LABEL		1	1	1	1	
10	G	—	WATER COIL BASE		1	1	1	1	BK00R980G01
11	G	—	PUMP ASSY SUPPORT		1	1	1	1	BK02R939G01
12	G	—	PUMP SUPPORT		1	1	1	1	BK00R976G01
13	G	—	P.R.V. SUPPORT		1	1	1	1	BK02R938G01
14	G	S70 C19 686	BASE ASSY	WITH LABEL	1	1	1	1	
15	G	S70 C24 662	SIDE PANEL R		1	1	1	1	
16	G	—	BACK PANEL SUPPORT		1	1	1	1	BK02N513G01
17	G	S71 490 G01	BACK PANEL HOOK		1	1	1	1	
18	G	S70 H06 699	WIRING DIAGRAM & ELECTRIC NOTICE		1				
	G	S70 H07 699	WIRING DIAGRAM & ELECTRIC NOTICE			1			
	G	S70 H08 699	WIRING DIAGRAM & ELECTRIC NOTICE				1		
	G	S70 H09 699	WIRING DIAGRAM & ELECTRIC NOTICE					1	

RoHS PARTS LIST

EHSC-VM2C.UK
EHSC-VM6C.UK
EHSC-YM9C.UK
EHSC-TM9C.UK

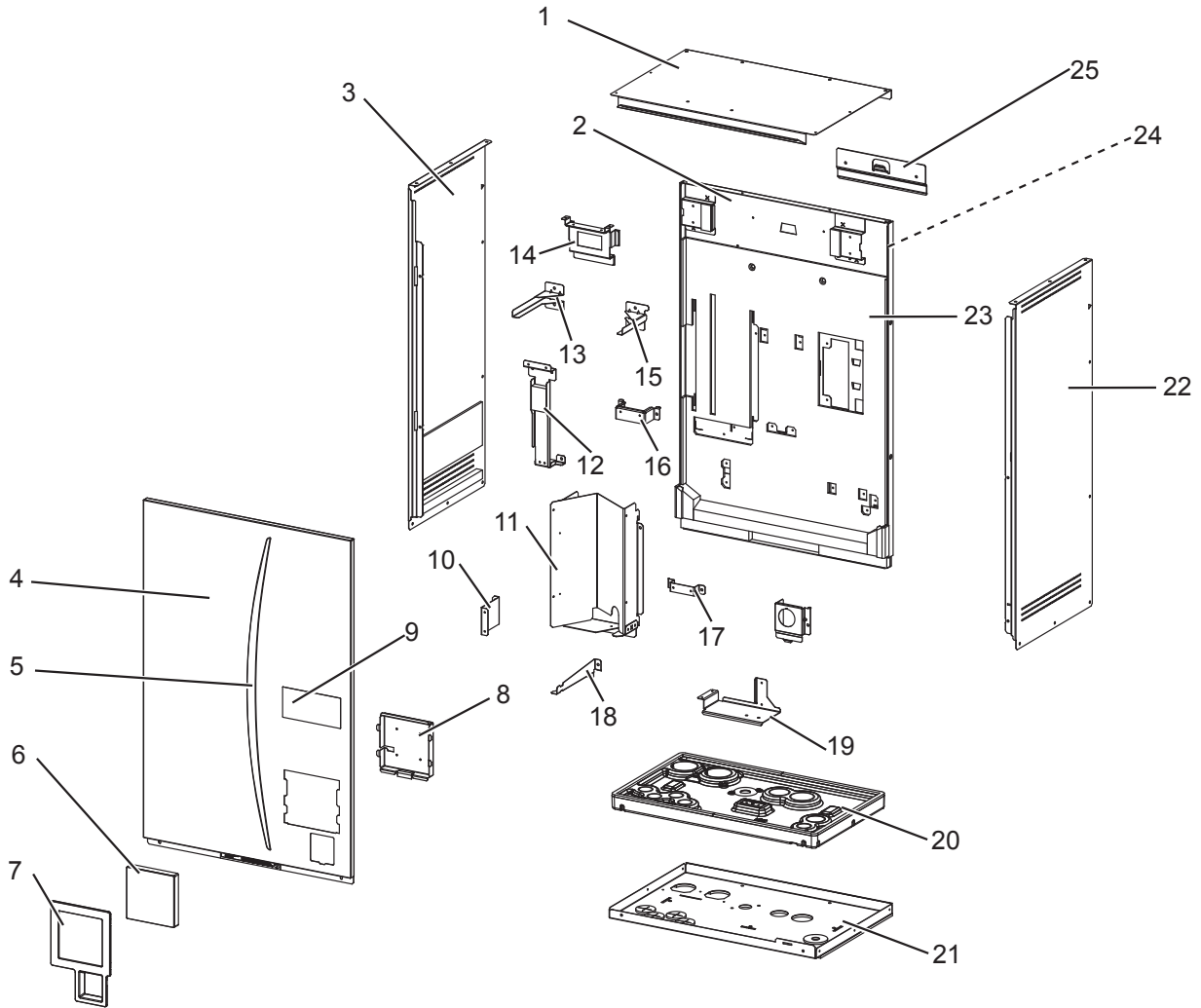


RoHS PARTS LIST

No.	RoHS	Part No.	Parts name	Specification	Q'ty /unit				Remarks
					EHSC-VM2C.UK	EHSC-VM6C.UK	EHSC-YM9C.UK	EHSC-TM9C.UK	
1	G	S70 C16 641	TOP PANEL ASSY		1	1	1	1	
2	G	S70 H08 661	BACK PANEL		1	1	1	1	
3	G	S70 C32 662	SIDE PANEL L		1	1	1	1	
4	G	S70 C25 668	FRONT PANEL ASSY		1	1	1	1	
5	G	S70 C30 699	FRONT PANEL GRAPHIC (LEAF LABEL)		1	1	1	1	
6	G	S70 C85 200	MAIN REMOTE CONTROLLER ASSY		1	1	1	1	
7	G	S70 C21 710	MAIN REMOTE CONTROLLER HOLDER		1	1	1	1	
8	G	—	MAIN REMOTE CONTROLLER SUPPORT		1	1	1	1	BK00R897G01
9	G	S70 C20 699	BRAND LABEL		1	1	1	1	
10	G	—	WATER COIL BASE		1	1	1	1	BK00R980G01
11	G	—	PUMP ASSY SUPPORT		1	1	1	1	BK02R939G01
12	G	—	EXPANSION VESSEL HOLDER(L)		1	1	1	1	BK02L229G08
13	G	—	EXPANSION VESSEL STAY		1	1	1	1	BK00L285G04
14	G	—	EXPANSION VESSEL HOLDER(R)		1	1	1	1	BK02L229G07
15	G	—	PUMP SUPPORT		1	1	1	1	BK00R976G01
16	G	—	P.R.V. SUPPORT		1	1	1	1	BK02R938G01
17	G	S70 C19 686	BASE ASSY	WITH LABEL	1	1	1	1	
18	G	S70 C23 662	SIDE PANEL R		1	1	1	1	
19	G	—	BACK PANEL SUPPORT		1	1	1	1	BK02N513G01
20	G	S71 490 G01	BACK PANEL HOOK		1	1	1	1	
21	G	S70 H07 699	WIRING DIAGRAM & ELECTRIC NOTICE		1				
	G	S70 H08 699	WIRING DIAGRAM & ELECTRIC NOTICE			1			
	G	S70 H09 699	WIRING DIAGRAM & ELECTRIC NOTICE				1		
	G	S70 H10 699	WIRING DIAGRAM & ELECTRIC NOTICE					1	

RoHS PARTS LIST

ERSD-VM2C.UK

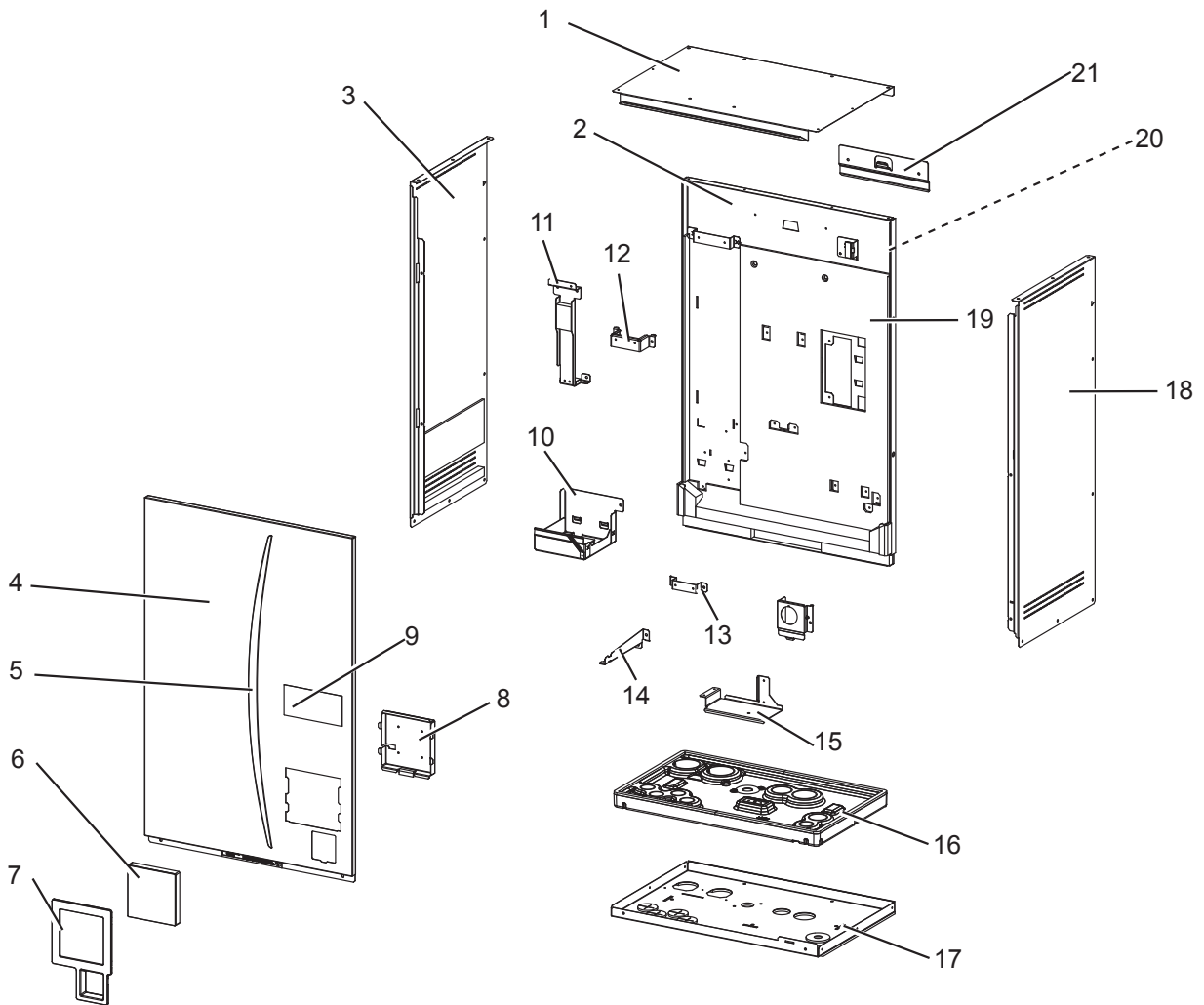


RoHS PARTS LIST

No.	RoHS	Part No.	Parts name	Specification	Q'ty /unit		Remarks
					ERSD-VM2C.UK		
1	G	S70 C16 641	TOP PANEL ASSY			1	
2	G	S70 H01 661	BACK PANEL			1	
3	G	S70 C31 662	SIDE PANEL L			1	
4	G	S70 C25 668	FRONT PANEL ASSY			1	
5	G	S70 C30 699	FRONT PANEL GRAPHIC (LEAF LABEL)			1	
6	G	S70 C85 200	MAIN REMOTE CONTROLLER ASSY			1	
7	G	S70 C21 710	MAIN REMOTE CONTROLLER HOLDER			1	
8	G	—	MAIN REMOTE CONTROLLER SUPPORT			1	BK00R897G01
9	G	S70 C20 699	BRAND LABEL			1	
10	G	—	STRAINER PIPE SUPPORT			1	BK02R948G01
11	G	—	WATER COIL BASE			1	BK00R987G01
12	G	—	PUMP ASSY SUPPORT			1	BK02R939G01
13	G	—	EXPANSION VESSEL HOLDER(L)			1	BK02L229G08
14	G	—	EXPANSION VESSEL STAY			1	BK00L285G04
15	G	—	EXPANSION VESSEL HOLDER(R)			1	BK02L229G07
16	G	—	PUMP SUPPORT			1	BK00R976G01
17	G	—	PIPE SUPPORT			1	BK02F833G01
18	G	—	P.R.V. SUPPORT			1	BK02R938G01
19	G	—	STRAINER HOLDER			1	BK02N519G50
20	G	S70 C10 529	DRAIN PAN ASSY			1	
21	G	S70 C17 686	BASE ASSY	WITH LABEL		1	
22	G	S70 C21 662	SIDE PANEL R			1	
23	G	—	COVER PLATE			1	BK00F352G01
24	G	—	BACK PANEL SUPPORT	WITH INS		1	BK02N561G01
25	G	S71 490 G01	BACK PANEL HOOK			1	
26	G	S70 H07 699	WIRING DIAGRAM & ELECTRIC NOTICE			1	

RoHS PARTS LIST

ERSC-MEC.UK

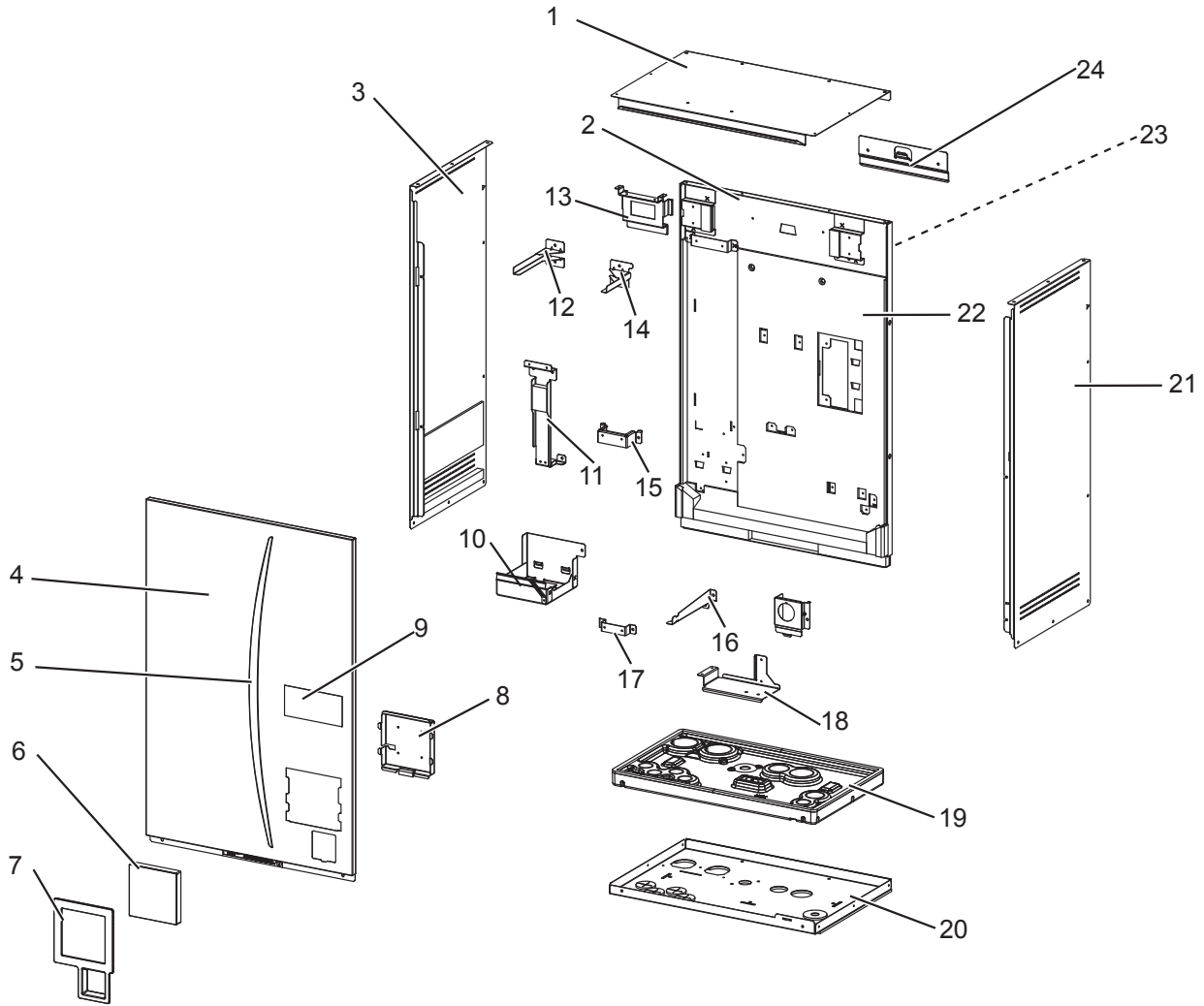


RoHS PARTS LIST

No.	RoHS	Part No.	Parts name	Specification	Q'ty /unit	Remarks
					ERSC-MEC.UK	
1	G	S70 C16 641	TOP PANEL ASSY		1	
2	G	S70 H02 661	BACK PANEL		1	
3	G	S70 C31 662	SIDE PANEL L		1	
4	G	S70 C25 668	FRONT PANEL ASSY		1	
5	G	S70 C30 699	FRONT PANEL GRAPHIC (LEAF LABEL)		1	
6	G	S70 C85 200	MAIN REMOTE CONTROLLER ASSY		1	
7	G	S70 C21 710	MAIN REMOTE CONTROLLER HOLDER		1	
8	G	—	MAIN REMOTE CONTROLLER SUPPORT		1	BK00R897G01
9	G	S70 C20 699	BRAND LABEL		1	
10	G	—	WATER COIL BASE		1	BK00R980G01
11	G	—	PUMP ASSY SUPPORT		1	BK02R939G01
12	G	—	PUMP SUPPORT		1	BK00R976G01
13	G	—	PIPE SUPPORT		1	BK02F833G01
14	G	—	P.R.V. SUPPORT		1	BK02R938G01
15	G	—	STRAINER HOLDER		1	BK02N519G50
16	G	S70 C10 529	DRAIN PAN ASSY		1	
17	G	S70 C17 686	BASE ASSY	WITH LABEL	1	
18	G	S70 C22 662	SIDE PANEL R		1	
19	G	—	COVER PLATE		1	BK00F352G01
20	G	—	BACK PANEL SUPPORT	WITH INS	1	BK02N561G01
21	G	S71 490 G01	BACK PANEL HOOK		1	
22	G	S70 H06 699	WIRING DIAGRAM & ELECTRIC NOTICE		1	

RoHS PARTS LIST

ERSC-VM2C.UK

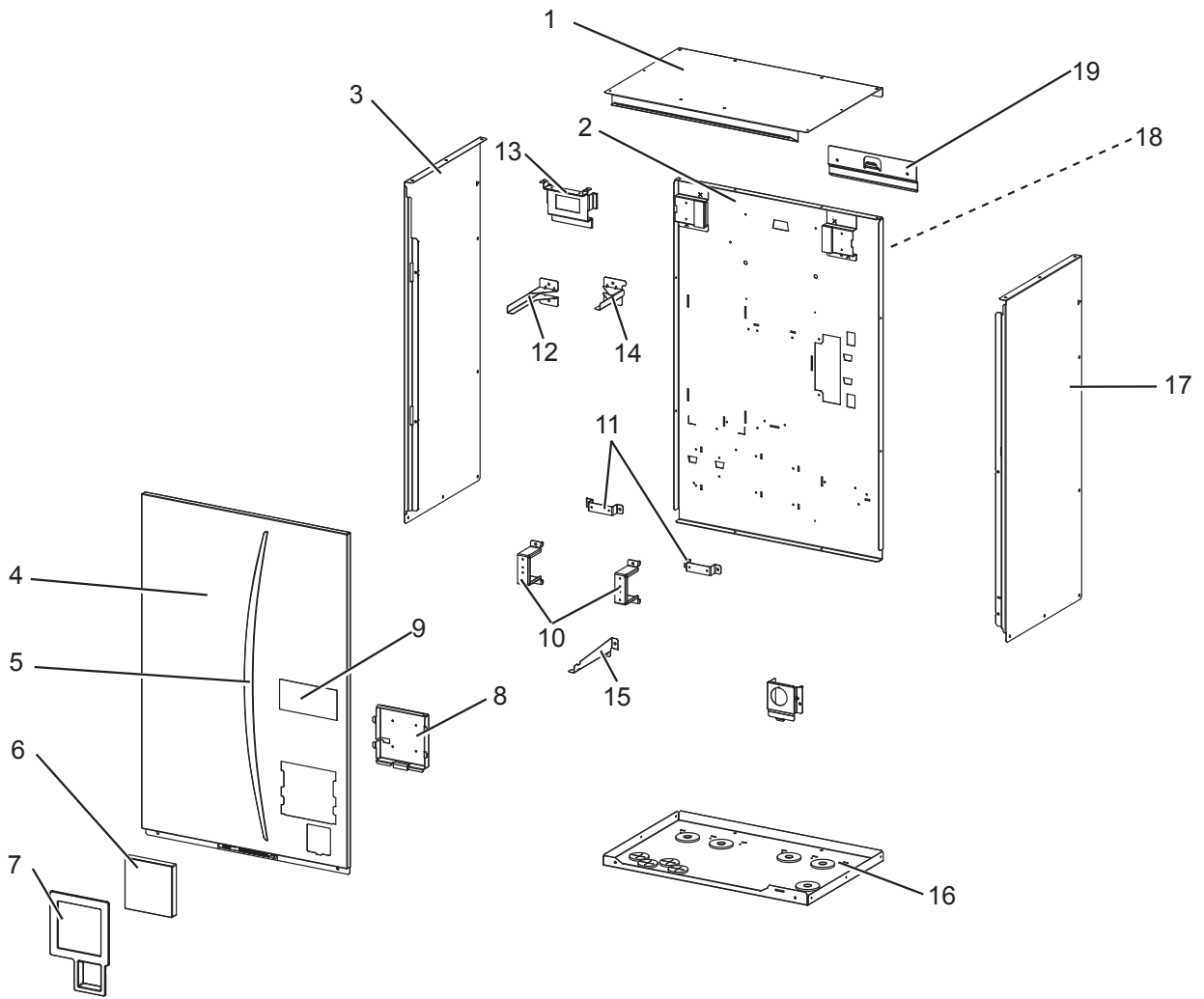


RoHS PARTS LIST

No.	RoHS	Part No.	Parts name	Specification	Q'ty /unit		Remarks
					ERSC-VM2C.UK		
1	G	S70 C16 641	TOP PANEL ASSY			1	
2	G	S70 H03 661	BACK PANEL			1	
3	G	S70 C31 662	SIDE PANEL L			1	
4	G	S70 C25 668	FRONT PANEL ASSY			1	
5	G	S70 C30 699	FRONT PANEL GRAPHIC (LEAF LABEL)			1	
6	G	S70 C85 200	MAIN REMOTE CONTROLLER ASSY			1	
7	G	S70 C21 710	MAIN REMOTE CONTROLLER HOLDER			1	
8	G	—	MAIN REMOTE CONTROLLER SUPPORT			1	BK00R897G01
9	G	S70 C20 699	BRAND LABEL			1	
10	G	—	WATER COIL BASE			1	BK00R987G01
11	G	—	PUMP ASSY SUPPORT			1	BK02R939G01
12	G	—	EXPANSION VESSEL HOLDER(L)			1	BK02L229G08
13	G	—	EXPANSION VESSEL STAY			1	BK00L285G04
14	G	—	EXPANSION VESSEL HOLDER(R)			1	BK02L229G07
15	G	—	PUMP SUPPORT			1	BK00R976G01
16	G	—	P.R.V. SUPPORT			1	BK02R938G01
17	G	—	PIPE SUPPORT			1	BK02F833G01
18	G	—	STRAINER HOLDER			1	BK02N519G50
19	G	S70 C10 529	DRAIN PAN ASSY			1	
20	G	S70 C17 686	BASE ASSY	WITH LABEL		1	
21	G	S70 C21 662	SIDE PANEL R			1	
22	G	—	COVER PLATE			1	BK00F352G01
23	G	—	BACK PANEL SUPPORT	WITH INS		1	BK02N561G01
24	G	S71 490 G01	BACK PANEL HOOK			1	
(25)	G	S70 H07 699	WIRING DIAGRAM & ELECTRIC NOTICE			1	

RoHS PARTS LIST

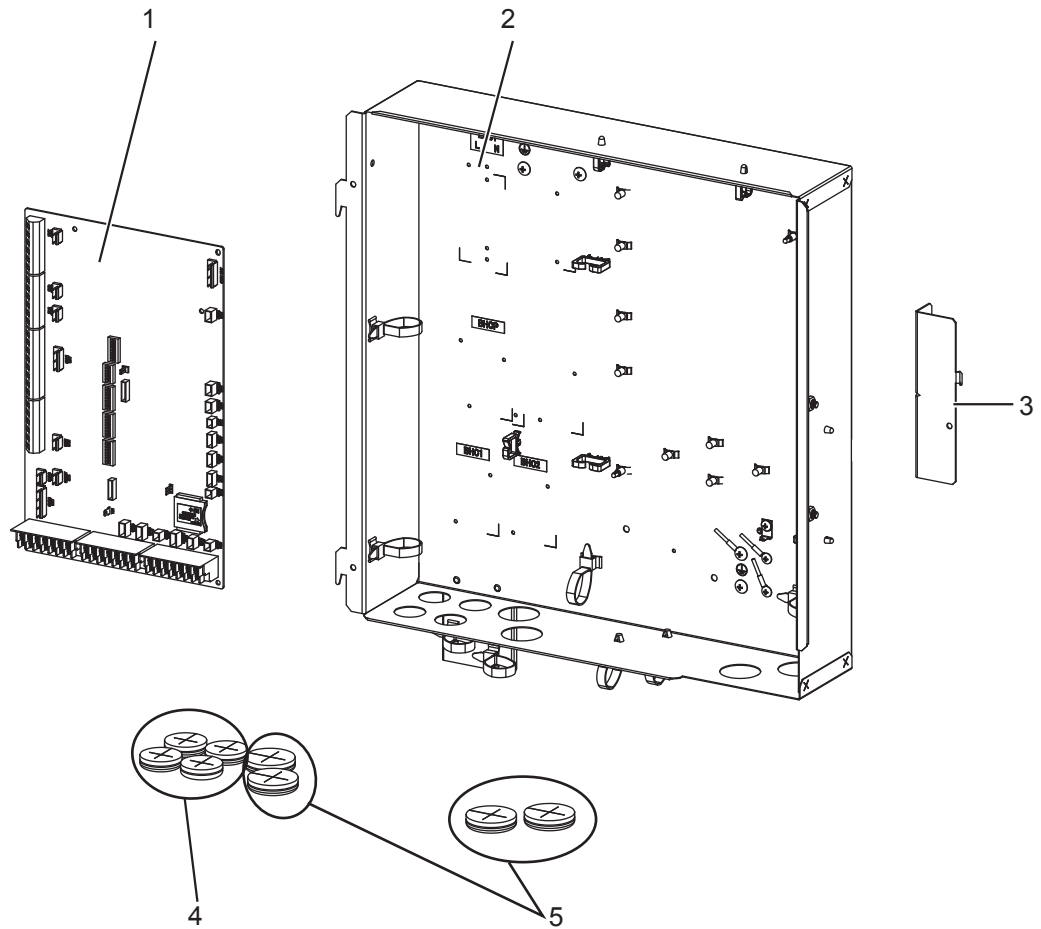
EHPX-VM2C.UK
EHPX-VM6C.UK
EHPX-VM9C.UK



RoHS PARTS LIST

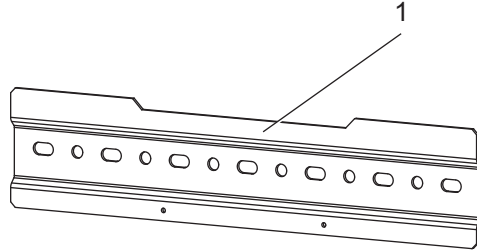
No.	RoHS	Part No.	Parts name	Specification	Q'ty /unit			Remarks
					EHPX-VM2C.UK	EHPX-VM6C.UK	EHPX-VM9C.UK	
1	G	S70 C16 641	TOP PANEL ASSY		1	1	1	
2	G	S70 H04 661	BACK PANEL		1	1	1	
3	G	S70 C32 662	SIDE PANEL L		1	1	1	
4	G	S70 C25 668	FRONT PANEL ASSY		1	1	1	
5	G	S70 C30 699	FRONT PANEL GRAPHIC (LEAF LABEL)		1	1	1	
6	G	S70 C85 200	MAIN REMOTE CONTROLLER ASSY		1	1	1	
7	G	S70 C21 710	MAIN REMOTE CONTROLLER HOLDER		1	1	1	
8	G	—	MAIN REMOTE CONTROLLER SUPPORT		1	1	1	BK00R897G01
9	G	S70 C20 699	BRAND LABEL		1	1	1	
10	G	—	STRAINER SUPPORT		2	2	2	BK02R947G01
11	G	—	PIPE SUPPORT		2	2	2	BK02F833G01
12	G	—	EXPANSION VESSEL HOLDER(L)		1	1	1	BK02L229G08
13	G	—	EXPANSION VESSEL STAY		1	1	1	BK00L285G04
14	G	—	EXPANSION VESSEL HOLDER(R)		1	1	1	BK02L229G07
15	G	—	P.R.V. SUPPORT		1	1	1	BK02R938G01
16	G	S70 C18 686	BASE ASSY	WITH LABEL	1	1	1	
17	G	S70 C23 662	SIDE PANEL R		1	1	1	
18	G	—	BACK PANEL SUPPORT		1	1	1	BK02N513G01
19	G	S71 490 G01	BACK PANEL HOOK		1	1	1	
20	G	S70 H07 699	WIRING DIAGRAM & ELECTRIC NOTICE		1			
	G	S70 H08 699	WIRING DIAGRAM & ELECTRIC NOTICE			1		
	G	S70 H09 699	WIRING DIAGRAM & ELECTRIC NOTICE				1	

RoHS PARTS LIST



No.	RoHS	Part No.	Parts name	Q'ty /unit																Remarks	Wiring diagram symbol	
				EHSD-MEC.UK	EHSD-MC.UK	EHSD-VM2C.UK	EHSD-YM9C.UK	EHSC-MEC.UK	EHSC-VM2C.UK	EHSC-VM2EC.UK	EHSC-VM6C.UK	EHSC-VM6EC.UK	EHSC-YM9C.UK	EHSC-YM9EC.UK	EHSC-TM9C.UK	ERSD-VM2C.UK	ERSC-MEC.UK	ERSC-VM2C.UK	EHPX-VM2C.UK			EHPX-VM6C.UK
1	G	S70 C50 315	ATW CONTROLLER	1	1	1	1	1	1	1	1	1	1	1	1	1	1	1	1	1		FTC5
2	G	—	CONTROL BOX	1	1			1								1					BK00Y382G05	
	G	—	CONTROL BOX			1			1	1					1	1	1				BK00Y382G06	
	G	—	CONTROL BOX								1	1							1		BK00Y382G07	
	G	—	CONTROL BOX				1						1	1	1					1	BK00Y382G08	
3	G	—	CONTROL BOX BRACKET R	1	1	1	1	1	1	1	1	1	1	1	1	1	1	1	1	1	BK00R974G01	
4	G	S70 C11 306	BUSH	4	4	4	4	4	4	4	4	4	4	4	4	4	4	4	4	4	FOR CABLE	
5	G	S70 C21 306	BUSH	4	4	4	4	4	4	4	4	4	4	4	4	4	4	4	4	4	FOR CABLE	

RoHS PARTS LIST



No.	RoHS	Part No.	Parts name	Specification	Q'ty /unit																Remarks	Wiring diagram symbol							
					EHSD-MEC.UK	EHSD-MC.UK	EHSD-VM2C.UK	EHSD-YM9C.UK	EHSC-MEC.UK	EHSC-VM2C.UK	EHSC-VM2EC.UK	EHSC-VM6C.UK	EHSC-VM6EC.UK	EHSC-YM9C.UK	EHSC-YM9EC.UK	EHSC-TM9C.UK	ERSD-VM2C.UK	ERSC-MEC.UK	ERSC-VM2C.UK	EHPX-VM2C.UK			EHPX-VM6C.UK	EHPX-YM9C.UK					
1	G	—	BACK PLATE		1	1	1	1	1	1	1	1	1	1	1	1	1	1	1	1	1	1	1	1	1	1	ACCESSORY, BK02J443G01		
	G	S70 C45 202	THERMISTOR (FLOW WATER TEMP & RETURN WATER TEMP)																	1	1	1							THW1/2
2	G	S70 C65 202	THERMISTOR (FLOW WATER TEMP & RETURN WATER TEMP)		1	1	1	1	1	1	1	1	1	1	1	1						1	1	1					THW1/2
3	G	S70 C55 202	THERMISTOR (LIQUID REFRIGERANT TEMP)		1	1	1	1	1	1	1	1	1	1	1	1	1	1	1										TH2
4	G	S70 C55 460	GASKET 1"	1"	3	3	3	3	3	3	3	3	3	3	3	3	3	3	3	3	3	3	3	2	2	2	FOR CONNECTION OF WATER CIRCUIT		
5	G	S70 C77 460	GASKET 3/8"	3/8"		1	1	1		1		1		1		1	1		1	1	1	1	1	1	1	FOR CONNECTION OF WATER CIRCUIT			
6	G	S70 C88 460	GASKET 1/4"	1/4"	1	1	1	1	1	1	1	1	1	1	1	1	1	1	1	1	1	1	1	1	1	FOR CONNECTION OF WATER CIRCUIT (MANOMETER)			

Parts number that is circled is not shown in the figure.

Do not reuse the gaskets (No.4 to 6) that were once removed, but be sure to replace with a new one.

2**OPTIONAL PARTS****2-1. WIRELESS REMOTE CONTROLLER**

Part No.	PAR-WT50R-E
----------	-------------

2-2. WIRELESS RECEIVER

Part No.	PAR-WR51R-E
----------	-------------

2-3. REMOTE SENSOR

Part No.	PAC-SE41TS-E
----------	--------------

2-4. THERMISTOR

Part No.	PAC-TH011-E
----------	-------------

2-5. HIGH TEMPERATURE THERMISTOR

Part No.	PAC-TH011HT-E
----------	---------------

2-6. TANK THERMISTOR (5 m)

Part No.	PAC-TH011TK-E
----------	---------------

2-7. TANK THERMISTOR (30 m)

Part No.	PAC-TH011TKL-E
----------	----------------

2-8. ecodan Wi-Fi INTERFACE

Part No.	PAC-WF010-E
----------	-------------

mitsubishi electric corporation

HEAD OFFICE : TOKYO BLDG., 2-7-3, MARUNOUCHI, CHIYODA-KU, TOKYO 100-8310, JAPAN
