

June 2014

No. OCB562

PARTS CATALOG

R410A

Outdoor Unit
[Model Name]

[Service Ref.]

PUHZ-W112VHA

PUHZ-W112VHA

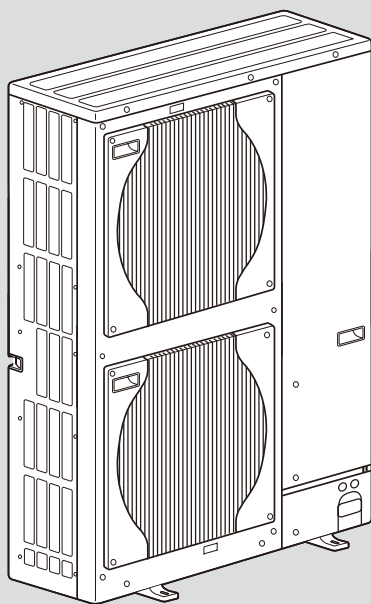
Salt proof model

PUHZ-W112VHA-BS

PUHZ-W112VHA-BS

Notes:

- This manual describes service data of outdoor unit only.
- RoHS compliant products have <G> mark on the spec name plate.



CONTENTS

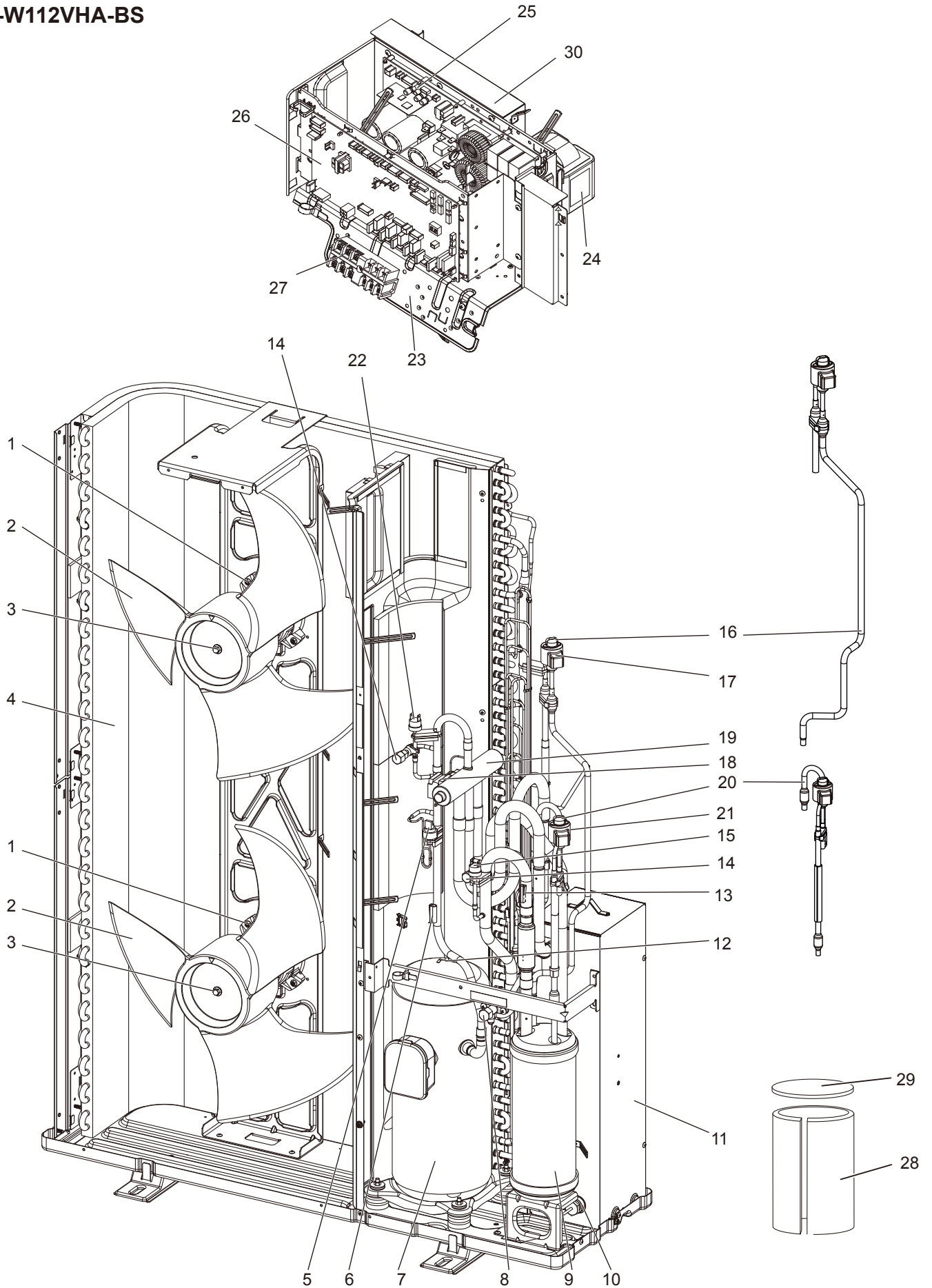
1. RoHS PARTS LIST 2
2. OPTIONAL PARTS 5

SERVICE MANUAL (OCH562)

FUNCTIONAL AND ELECTRICAL PARTS

PUHZ-W112VHA

PUHZ-W112VHA-BS

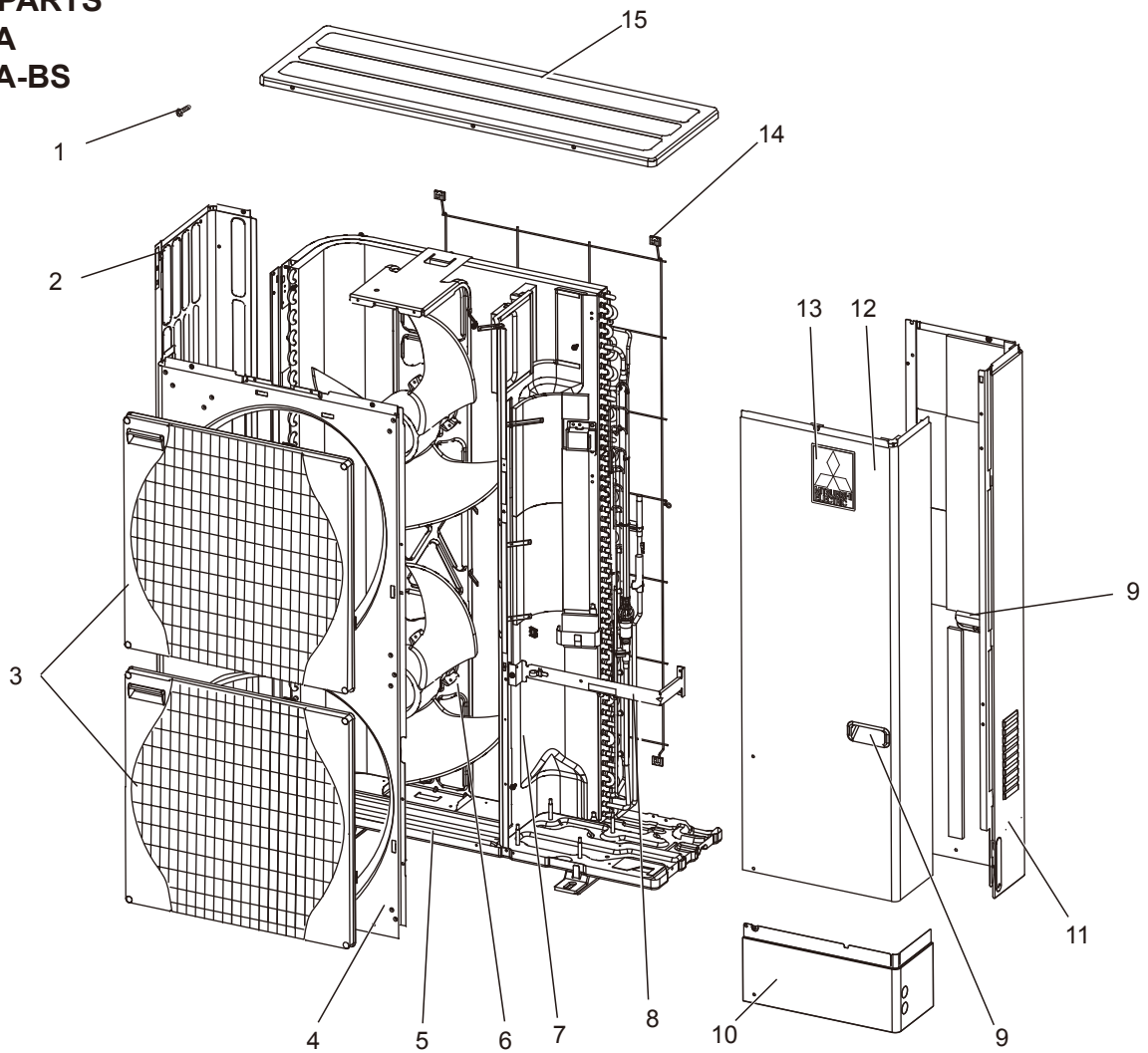


RoHS PARTS LIST

Parts numbers that are circled are not shown in the figure.

No.	RoHS	Parts No.	Parts Name	Specification	Q'ty/unit		Remarks (Drawing No.)	Wiring Diagram Symbol
					PUHZ-W112VHA	PUHZ-W112VHA-BS		
1	G	R01 E50 221	FAN MOTOR		2	2		MF1, 2
2	G	R01 E12 115	PROPELLER FAN		2	2		
3	G	R01 E09 097	NUT		2	2		
4	G	T7W E67 408	HEAT EXCHANGER		1	1		
5	G	R01 E07 208	HIGH PRESSURE SENSOR		1	1		63HS
6	G	R01 E22 201	THERMISTOR	Discharge	1	1		TH4
7	G	T97 441 077	COMPRESSOR	ANB33FNMMT	1	1	Including RUBBER MOUNTS	MC
8	G	R01 E10 411	STOP VALVE 1/4		1	1		
9	G	R01 E61 440	POWER RECEIVER		1	1		
10	G	R01 H85 202	THERMISTOR	Inlet Water	1	1		TH32
11	G	R01 H24 408	PLATE HEAT EXCHANGER		1	1		
12	G	R01 H90 202	THERMISTOR	Comp. Surface	1	1		TH34
13	G	R01 H79 202	THERMISTOR	Suction	1	1		TH33
14	G	R01 E24 413	CHARGE PLUG		2	2		
15	G	R01 E00 209	LOW PRESSURE SWITCH		1	1		63L
16	G	T7W E48 401	LEV-A ASSY		1	1	Including LEV COIL	
17	G	R01 H09 242	LEV COIL	UKV type	1	1	Connector WHITE	LEV-A
18	G	T7W E41 242	SOLENOID COIL		1	1		21S4
19	G	R01 E15 403	4 WAY VALVE		1	1		
20	G	T7W E49 401	LEV-B ASSY		1	1	Including LEV COIL	
21	G	R01 H08 242	LEV COIL	UKV type	1	1	Connector RED	LEV-B
22	G	R01 E06 208	HIGH PRESSURE SWITCH		1	1		63H
23	G	—	ELECTRICAL PARTS BOX		1	1	(BK00C681G32)	
24	G	T7W E24 259	REACTOR		1	1		DCL
25	G	T7W AC0 323	POWER BOARD		1	1		P.B.
26	G	T7W G90 315	CONTROLLER BOARD		1	1		C.B.
27	G	T7W E29 716	TERMINAL BLOCK	6P(L,N,0,\$1,\$2,\$3)	1	1		TB1
28	G	R01 A56 602	COMP FELT (BODY)		1	1		
29	G	R01 A57 602	COMP FELT (TOP)		1	1		
30	G	R01 A10 371	HEAT SINK		1	1		
③①	G	R01 E13 510	LEAD ASSY COMP		1	1		
③②	G	R01 H00 202	THERMISTOR	Liquid	1	1		TH3
③③	G	R01 H99 202	THERMISTOR	Plate HEX Liquid, Ambient	1	1	Combined Port	TH6, 7
③④	G	R01 E20 254	MAIN SMOOTHING CAPACITOR		1	1		CB
③⑤	G	R01 E14 239	FUSE	250 V 6.3 A	4	4		F1, 2, 3, 4

STRUCTURAL PARTS
PUHZ-W112VHA
PUHZ-W112VHA-BS



No.	RoHS	Parts No.	Parts Name	Specification	Q'ty/unit		Remarks (Drawing No.)	Wiring Diagram Symbol	Recom- mended Q'ty
					PUHZ- W112VHA	PUHZ- W112VHA-BS			
1	G	—	F.ST SCREW	(5 × 12)	36	36	(DG12F536H12)		
2	G	R01 E33 662	SIDE PANEL (L)		1	1			
3	G	R01 E33 691	FAN GRILLE		2	2			
4	G	R01 E16 668	FRONT PANEL		1	1			
5	G	R01 E49 686	BASE ASSY		1	1			
6	G	R01 E19 130	MOTOR SUPPORT		1	1			
7	G	—	SEPARATOR		1	1	(BK00C143GK8)		
8	G	—	VALVE BED		1	1	(BK00G125G12)		
9	G	R01 E01 655	HANDLE		2	2			
10	G	R01 E37 658	COVER PANEL (FRONT)		1	1			
11	G	R01 E61 661	SIDE PANEL (R)		1	1			
12	G	R01 E34 667	SERVICE PANEL		1	1			
13	G	—	LABEL (MITSUBISHI)		1	1	(DG79R130H03)		
14	G	R01 E07 698	REAR GUARD		1	1			
15	G	R01 E34 641	TOP PANEL		1	1			
⑬	G	R01 E02 655	HANDLE		1	1			

2

OPTIONAL PARTS

2-1. AIR DISCHARGE GUIDE (need 2 pieces.)

Parts No.	PAC-SG59SG-E
-----------	--------------

2-2. AIR PROTECTION GUIDE (need 2 pieces.)

Parts No.	PAC-SH63AG-E
-----------	--------------

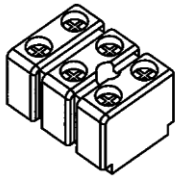

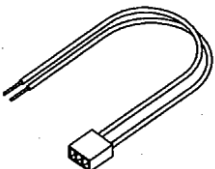
2-3. DRAIN SOCKET

Parts No.	PAC-SG61DS-E
-----------	--------------

2-4. CONNECTOR FOR DRAIN HOSE HEATER

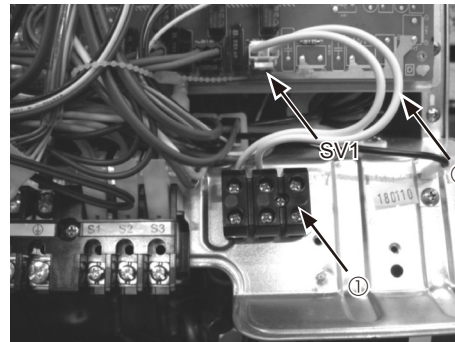
Parts No.	PAC-SE60RA-E
-----------	--------------

Contents

① Terminal block	×1
	
② Screw	×1
	
③ Lead wire with connector	×1
	

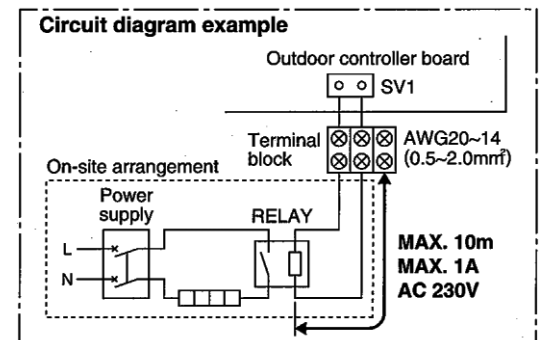
Installation

●W112V



1. Attach the terminal block ①, with the screw ②.
2. Connect the lead wire ③ connector side to SV1 port on the outdoor controller board.
3. Connect the lead wire ③ to the terminal block ①.
4. Wire local cables for a drain hose heater RELAY to the terminal block ①.

- Drain hose heater RELAY connection only
- MAX current 1A



SV1 on the controller board
→ Drain hose heater signal output
With PAC-SE60RA-E
From defrost start
For 15 min. ON signal provided

mitsubishi electric corporation

HEAD OFFICE : TOKYO BLDG., 2-7-3, MARUNOUCHI, CHIYODA-KU, TOKYO 100-8310, JAPAN
