

October 2012

No. OCB465
REVISED EDITION-A

PARTS CATALOG

R410A

[Model name]

[Service Ref.]

PUHZ-W85VHA2

PUHZ-W85VHA2.UK

PUHZ-W85VHA2R1.UK

PUHZ-W85VHA2-BS

PUHZ-W85VHA2-BS.UK

PUHZ-W85VHA2R1-BS.UK

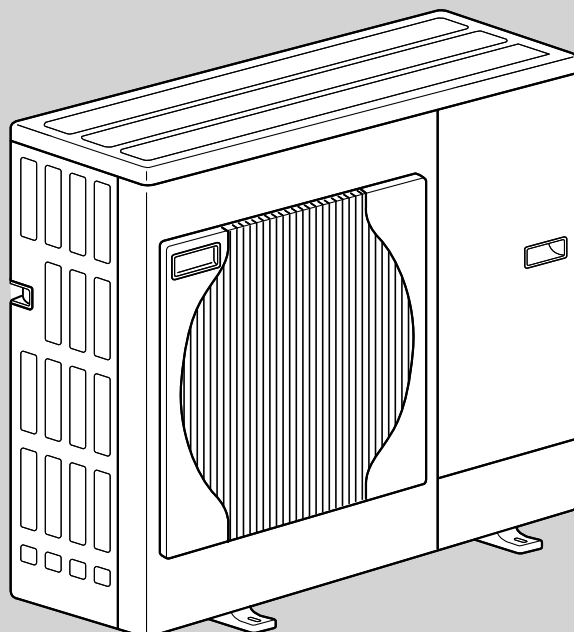
Revision:

- PUHZ-W85VHA2R1(-BS).UK have been added in REVISED EDITION-A.
- Some descriptions have been modified.

- Please void OCB465.

Note:

- This manual describes only service data of outdoor unit.
- RoHS compliant products have <G> mark on the spec name plate.



CONTENTS

1. RoHS PARTS LIST..... 2
2. OPTIONAL PARTS..... Back cover

SERVICE MANUAL (OCH465)

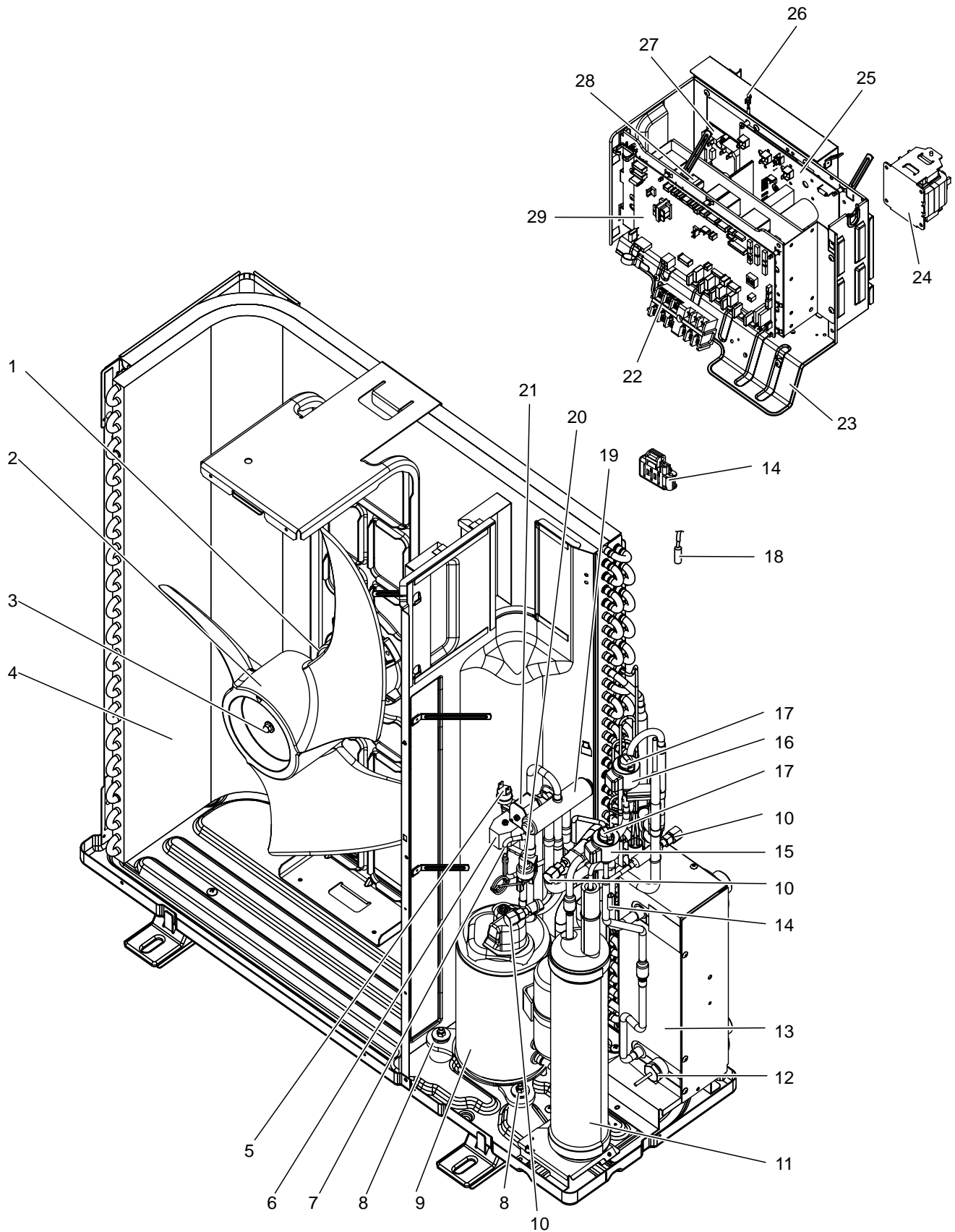
FUNCTIONAL AND ELECTRICAL PARTS

PUHZ-W85VHA2.UK

PUHZ-W85VHA2-BS.UK

PUHZ-W85VHA2R1.UK

PUHZ-W85VHA2R1-BS.UK

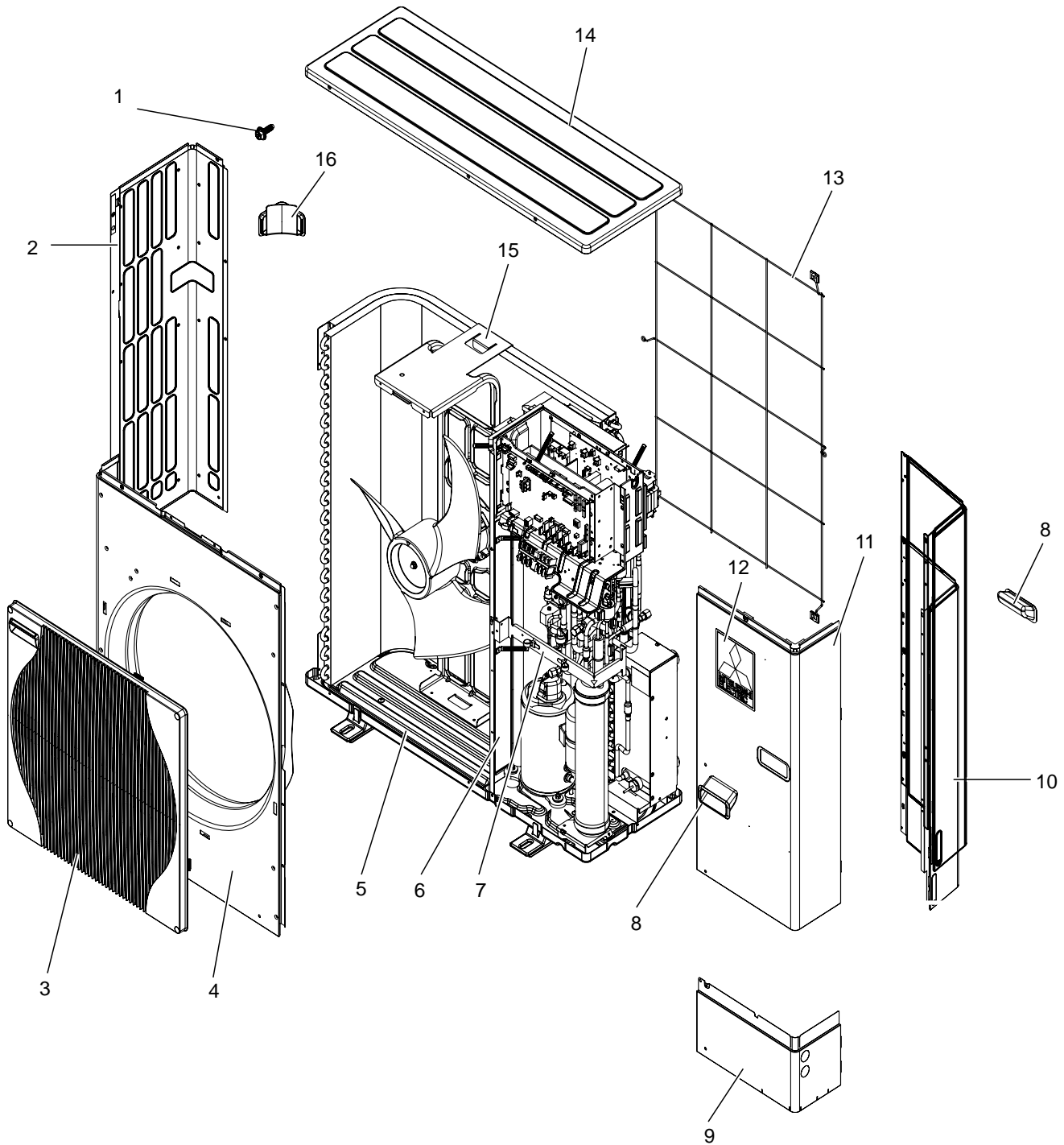


Part numbers that are circled are not shown in the figure.

No.	RoHS	Part No.	Part Name	Specification	Q'ty/unit				Remarks (Drawing No.)	Wiring Diagram Symbol	Recom- mended Q'ty
					PUHZ-W85VHA2.UK	PUHZ-W85VHA2-BS.UK	PUHZ-W85VHA2R1.UK	PUHZ-W85VHA2R1-BS.UK			
1	G	S70 E10 763	FAN MOTOR		1	1	1	1		MF1	
2	G	S70 K04 115	PROPELLER FAN		1	1	1	1			
3	G	S70 K01 097	NUT		1	1	1	1			
4	G	S70 E75 408	HEAT EXCHANGER		1	1					
	G	S70 E85 408	HEAT EXCHANGER				1	1			
5	G	S70 E10 208	HIGH PRESSURE SWITCH		1	1	1	1		63H	
6	G	S70 E04 242	BYPASS VALVE COIL		1	1	1	1		SV	
7	G	S70 292 403	BYPASS VALVE		1	1	1	1			
8	G	S70 E01 004	RUBBER MOUNT		3	3	3	3			
9	G	S70 E85 400	COMPRESSOR	TNB220FLHM1T	1	1	1	1		MC	
10	G	S70 E03 413	CHARGE PLUG		3	3	3	3			
11	G	S70 E85 440	POWER RECEIVER		1	1	1	1			
12	G	S70 E38 202	THERMISTOR (INLET WATER)		1	1				TH32	
	G	S70 E48 202	THERMISTOR (INLET WATER)				1	1		TH32	
13	G	S70 W75 408	PLATE HEAT EXCHANGER	ACH30-50	1	1					
	G	S70 W85 408	PLATE HEAT EXCHANGER	MWA1-44LM			1	1			
14	G	S70 E31 202	THERMISTOR (PLATE HEX LIQUID, AMBIENT)		1	1	1	1		TH6/TH7	
15	G	S70 E86 402	LEV COIL	Connector: Red	1	1	1	1		LEV-B	
16	G	S70 E85 402	LEV COIL	Connector: White	1	1	1	1		LEV-A	
17	G	S70 E80 401	LEV		2	2	2	2			
18	G	S70 E32 202	THERMISTOR (OUTDOOR PIPE)		1	1	1	1		TH3	
19	G	S70 E04 403	4 WAY VALVE		1	1	1	1			
20	G	S70 E11 208	HIGH PRESSURE SENSOR		1	1	1	1		63HS	
21	G	S70 E01 242	4 WAY VALVE COIL		1	1	1	1		21S4	
22	G	S70 E05 716	TERMINAL BLOCK	6P (L, N, ©, S1, S2, S3)	1	1	1	1		TB1	
23	G	S70 E37 316	CONTROL BOX ASSY		1	1					
	G	S70 E48 316	CONTROL BOX ASSY				1	1			
24	G	S70 K30 259	REACTOR		1	1	1	1		DCL	
25	G	S70 0B4 313	POWER CIRCUIT BOARD		1	1				P.B.	
	G	S70 0B9 313	POWER CIRCUIT BOARD				1	1		P.B.	
26	G	S70 E30 202	THERMISTOR (HEATSINK)		1	1	1	1		TH8	
27	G	S70 E30 233	ACTIVE FILTER MODULE		1	1	1	1		ACTM	
28	G	S70 E20 346	NOISE FILTER CIRCUIT BOARD		1	1	1	1		N.F.	
29	G	S70 0B6 315	CONTROLLER CIRCUIT BOARD		1	1				C.B.	
	G	S70 0B9 315	CONTROLLER CIRCUIT BOARD				1	1		C.B.	
30	G	S70 E40 202	THERMISTOR (DISCHARGE)		1	1	1	1		TH4	
31	G	S70 E39 202	SHELL THERMISTOR		1	1	1	1		TH33	

STRUCTURAL PARTS
PUHZ-W85VHA2.UK
PUHZ-W85VHA2R1.UK

PUHZ-W85VHA2-BS.UK
PUHZ-W85VHA2R1-BS.UK





No.	ROHS	Part No.	Part Name	Specification	Q'ty/unit				Remarks (Drawing No.)	Wiring Diagram Symbol	Recom- mended Q'ty
					PUHZ-W85VHA2.UK	PUHZ-W85VHA2-BS.UK	PUHZ-W85VHA2R1.UK	PUHZ-W85VHA2R1-BS.UK			
1	G	—	F.ST SCREW (5 x 12)		30	30	32	32	(DG12F536H12)		
2	G	S70 E11 662	SIDE PANEL (L)		1						
	G	S70 E12 662	SIDE PANEL (L)			1					
	G	S70 E13 662	SIDE PANEL (L)				1				
	G	S70 E14 662	SIDE PANEL (L)					1			
3	G	S70 E30 675	FAN GRILLE		1	1	1	1			
4	G	S70 E30 668	FRONT PANEL		1		1				
	G	S70 E50 668	FRONT PANEL			1		1			
5	G	S70 E41 686	BASE ASSY		1		1				
	G	S70 E51 686	BASE ASSY			1		1			
6	G	—	SEPARATOR		1		1		(BK00C456G44)		
	G	—	SEPARATOR			1		1	(BK00C456G39)		
7	G	—	VALVE BED ASSY (STAY)		1	1	1	1	(BK00G862G01)		
8	G	S70 30L 655	HANDLE		2	2	2	2			
9	G	S70 E60 658	COVER PANEL (FRONT)		1		1				
	G	S70 E70 658	COVER PANEL (FRONT)			1		1			
10	G	S70 E71 662	SIDE PANEL (R)		1		1				
	G	S70 E81 662	SIDE PANEL (R)			1		1			
11	G	S70 E50 661	SERVICE PANEL		1		1				
	G	S70 E70 661	SERVICE PANEL			1		1			
12	G	S70 E20 699	LABEL (MITSUBISHI)		1	1	1	1			
13	G	S70 E10 698	REAR GUARD		1	1	1	1			
14	G	S70 E20 641	TOP PANEL		1		1				
	G	S70 E30 641	TOP PANEL			1		1			
15	G	S70 E10 130	MOTOR SUPPORT		1		1				
	G	S70 E70 130	MOTOR SUPPORT			1		1			
16	G	S70 E10 655	HANDLE		1	1	1	1			

2

OPTIONAL PARTS

2-1. AIR OUTLET GUIDE

Part No.	PAC-SG59SG-E
----------	--------------

2-2. AIR GUIDE

Part No.	PAC-SG57AG-E
----------	--------------

2-3. DRAIN SOCKET

Part No.	PAC-SG61DS-E
----------	--------------

2-4. DRAIN PAN

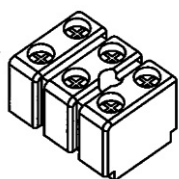
Part No.	PAC-SG64DP-E
----------	--------------

2-5. CONNECTOR FOR DRAIN HOSE HEATER

Part No.	PAC-SE58RA-E
----------	--------------

Contents

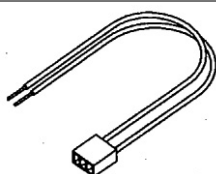
① Terminal block ×1



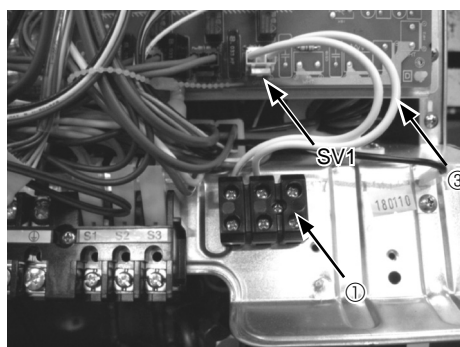
② Screw ×1



③ Lead wire with connector ×1

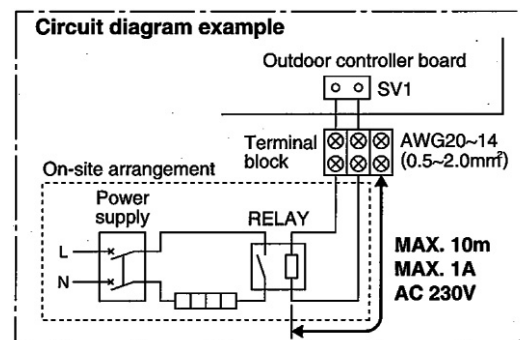


Installation



1. Attach the terminal block ①, with the screw ②.
2. Connect the lead wire ③ connector side to SV1 port on the outdoor controller board.
3. Connect the lead wire ③ to the terminal block ①.
4. Wire local cables for a drain hose heater RELAY to the terminal block ①.

- Drain hose heater RELAY connection only
- MAX current 1A



SV1 on the controller board
 → Drain hose heater signal output
 With PAC-SE58RA-E
 From defrost start
 For 15 min. ON signal provided

MITSUBISHI ELECTRIC CORPORATION

HEAD OFFICE : TOKYO BLDG., 2-7-3, MARUNOUCHI, CHIYODA-KU, TOKYO 100-8310, JAPAN