

Heating

Product Information

CAHV-P500YA-HPB
Ecodan Air Source Heat Pump

Making a
World of
Difference



CAHV Monobloc Heat Pump System

The Ecodan CAHV air source heat pump monobloc system can operate singularly, or form part of a multiple unit system. The CAHV also comes equipped with a wide range of controller features as standard.

A multiple unit system has the ability to cascade available units on and off to meet the load from a building. As an example of this modulation, a 16 unit system allows 0.5kW increments of capacity, from 18kW all the way up to 688kW. This level of modulation is unprecedented within the heating industry and with cascade and rotation built in as standard, the Ecodan CAHV system is perfectly suited to a wide range of commercial applications.



Certificate Number: MCS HPR002
Product Reference: CAHV-P500YA-HPB

Key Features

- Multiple unit cascade control of up to 688kW capacity
- Split refrigerant circuits within each CAHV provide 50% back up
- Ability to rotate units based on accumulated run hours
- Provides from 25°C up to 70°C water flow temperatures without boost heaters
- Low maintenance, hermetically-sealed monobloc design
- Low on-site refrigerant volume
- HIC (Zubadan) technology delivers 43kW at -3°C with minimal drop off down to -20°C



Air Conditioning | Heating
Ventilation | Controls



ecodan[®]
Renewable Heating Technology

MODEL		CAHV-P500YA-HPB
HEAT PUMP SPACE HEATER - 55°C	ErP Rating	A++
	η_{L_s}	125%
	SCOP	3.19
HEAT PUMP SPACE HEATER - 35°C	ErP Rating	A+
	η_{L_s}	139%
	SCOP	3.54
HEATING ^{*1} (A-3/W35)	Capacity (kW)	42.6
	Power Input (kW)	15.2
	COP	2.80
OPERATING AMBIENT TEMPERATURE (°C DB)		-20~+40°C
SOUND PRESSURE LEVEL AT 1M (dBA) ^{*2,3}		59
LOW NOISE MODE (dBA) ^{*2}		Variable
FLOW RATE(l/min)		126
WATER PRESSURE DROP (kPa)		18
DIMENSIONS (mm)	Width	1978
	Depth	759
	Height	1710 (1650 without legs)
WEIGHT (kg)		526
ELECTRICAL SUPPLY		380-415v, 50Hz
PHASE		3
NOMINAL RUNNING CURRENT [MAX] (A)		17.6 [52.9]
FUSE RATING - MCB SIZES (A) ^{*4}		63

*1 Under normal heating conditions at outdoor temp: -3°CDB / -4°CWB, outlet water temp 35°C, inlet water temp 30°C

*2 Under normal heating conditions at outdoor temp: 7°CDB / 6°CWB, outlet water temp 35°C, inlet water temp 30°C as tested to BS EN14511

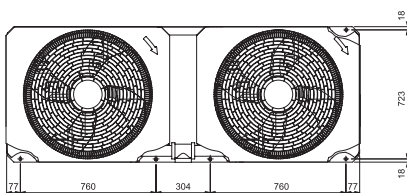
*3 Sound power level of the CAHV-P500YA-HPB is 70.7dBA. Tested to BS EN12102

*4 MCB Sizes BS EN60898-2 & BS EN60947-2

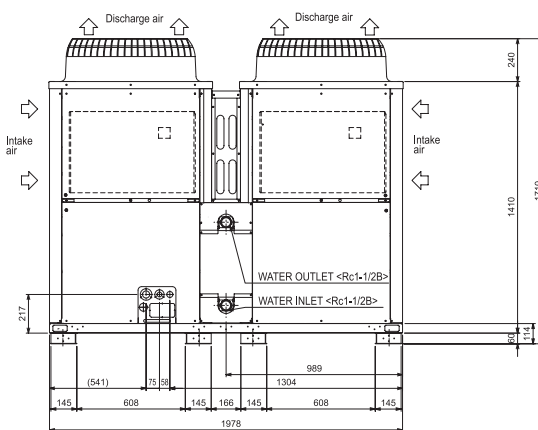
η_{L_s} is the seasonal space heating energy efficiency (SSHEE) η_{L_w} is the water heating energy efficiency

DIMENSIONS

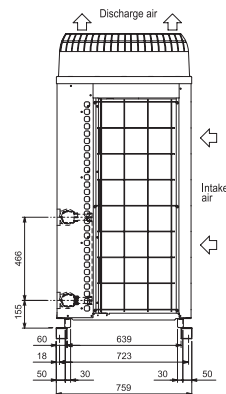
Upper View



Front View



Side View



Telephone: 01707 282880

email: heating@meuk.mee.com web: heating.mitsubishielectric.co.uk

UNITED KINGDOM Mitsubishi Electric Europe Living Environmental Systems Division
Travellers Lane, Hatfield, Hertfordshire, AL10 8XB, England General Enquiries Telephone: 01707 282880 Fax: 01707 278881

IRELAND Mitsubishi Electric Europe Westgate Business Park, Ballymount, Dublin 24, Ireland
Telephone: Dublin (01) 419 8800 Fax: Dublin (01) 419 8890 International code: (003531)

Country of origin: United Kingdom - Japan - Thailand - Malaysia. ©Mitsubishi Electric Europe 2015. Mitsubishi and Mitsubishi Electric are trademarks of Mitsubishi Electric Europe B.V. The company reserves the right to make any variation in technical specification to the equipment described, or to withdraw or replace products without prior notification or public announcement. Mitsubishi Electric is constantly developing and improving its products. All descriptions, illustrations, drawings and specifications in this publication present only general particulars and shall not form part of any contract. All goods are supplied subject to the Company's General Conditions of Sale, a copy of which is available on request. Third-party product and brand names may be trademarks or registered trademarks of their respective owners.



www.greengateway.mitsubishielectric.co.uk

Mitsubishi Electric UK's commitment
to the environment

Follow us @meuk_les
Follow us @green_gateway

Mitsubishi Electric
Living Environmental Systems UK

[youtube.com/mitsubishielectric2](https://www.youtube.com/mitsubishielectric2)

