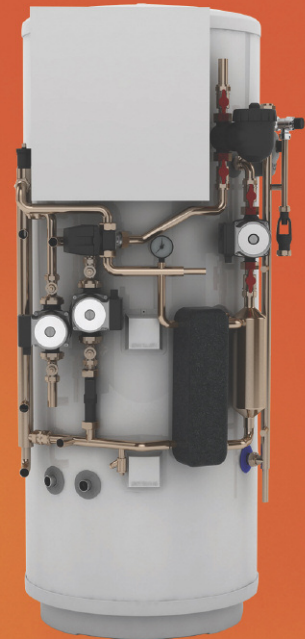


# Heating

## Product Information

**EHPT21-30X-UKHSCW**  
FTC5 Pre-plumbed Solar Cylinders for  
Ecodan Monobloc Units

Making a  
World of  
Difference



Pre-plumbed space heating and domestic hot water solar cylinder for Ecodan monobloc air source heat pumps

The pre-plumbed solar cylinder comes complete with integrated hydraulic components and advanced controls.

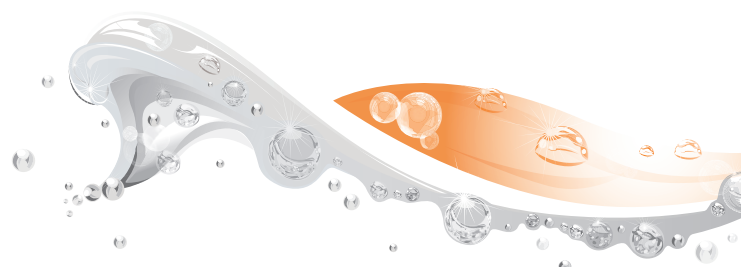
Designed to integrate with the Ecodan monobloc air source heat pump range, the solar cylinder provides improved performance and faster heat up times through the use of plate heat exchanger technology. Fast commissioning via an SD card and energy monitoring functions are now included.

### Key Features

- Includes secondary coil for connection to solar thermal systems
- Simple graphical control
- Optional 2-zone energy efficient space heating control
- Compatible with Mitsubishi Electric wireless room controllers
- Pre-plumbed and wired for faster installation
- Hybrid function, for use with conventional boilers
- SD card commissioning
- Energy monitoring as standard



Air Conditioning | Heating  
Ventilation | Controls



**ecodan**<sup>®</sup>  
Renewable Heating Technology

# Heating

## Product Information

### EHPT21-30X-UKHSCW FTC5 Pre-plumbed Solar Cylinders for Ecodan Monobloc Units

Making a  
World of  
Difference

#### ADVANCED CONTROLLER – WITH ENERGY MONITORING



Mitsubishi Electric's fifth generation controller (FTC5) includes intelligent room temperature control as standard. This together with advanced weather compensation ensures the system delivers efficient, comfortable heating regardless of the season. FTC5 now also includes energy monitoring showing consumed and produced energy.

CYLINDER		EHPT21X-UKHSCW	EHPT25X-UKHSCW	EHPT30X-UKHSCW	
NOMINAL HOT WATER VOLUME (LITRES)		210	250	300	
ERP RATING		C	C	C	
HEAT LOSS (kWh/24hrs)		1.56	1.63	1.84	
HEAT LOSS (W)		65.0	67.9	76.7	
WATER	Flow Rate (l/min) W50 - W85 - W112 - HW140	14.3 - 25.8 - 32.1 - 40.1			
	Primary Pump	2 x Grundfos UPS2 15-60			
	Sanitary Hot Water Pump	Grundfos UPSO 15-60 CIL2			
	Connection Size (mm) Heating / DHW (mm)	22	22	22	
	Primary Expansion Vessel (Litres)	18	24	24	
	Charge Pressure (MPa (Bar))	0.35 (3.5)	0.35 (3.5)	0.35 (3.5)	
WATER SAFETY DEVICES	Water Circuit	Control Thermostat (°C)	1 - 80	1 - 80	
		Pressure Relief Valve (MPa (Bar))	0.3 (3)	0.3 (3)	
	DHW Cylinder	Expansion Relief Valve (Cold)	0.8 (8)	0.8 (8)	
		Control Thermostat	40-70	40-70	
DIMENSIONS (mm)	High Limit Stat (°C)	Mechanical 80			
		Temp and Pressure Relief Valve (°C) / (MPa (Bar))			
		90 / 1.0 (10)	90 / 1.0 (10)	90 / 1.0 (10)	
		Width	678	678	678
WEIGHT EMPTY / FULL (kg)	CYLINDER MATERIAL	Depth	694	694	
		Height	1497	1749	2064
		74 / 284	82 / 332	92 / 392	
CYLINDER MATERIAL	Insulation	Cylinder Material	Stainless Steel	Stainless Steel	Stainless Steel
		Insulation Type	CFC / HCFC-free flame-retardant expanded Polyurethane		
		Insulation Thickness (mm)	60	60	60
		Standing Heat Loss (kWh/24hrs)	1.56	1.63	1.84
		GWP of Insulation	3.1	3.1	3.1
		ODP of Insulation	0	0	0
ELECTRICAL DATA	Control Board <i>optionally powered by outdoor unit</i>	Electrical Supply	220-240v, 50Hz	220-240v, 50Hz	220-240v, 50Hz
		Phase	Single	Single	Single
		Fuse Rating - MCB Sizes (A) <sup>1</sup>	10	10	10
		Immerision Heater	Electrical Supply	220-240v, 50Hz	220-240v, 50Hz
	Phase	Single	Single	Single	
	Capacity (kW)	3	3	3	
	Max Running Current (A)	13	13	13	
	Fuse Rating - MCB Sizes (A) <sup>1</sup>	16	16	16	

MECHANICAL ZONES

DHW and 1 Heating Zone<sup>2</sup>

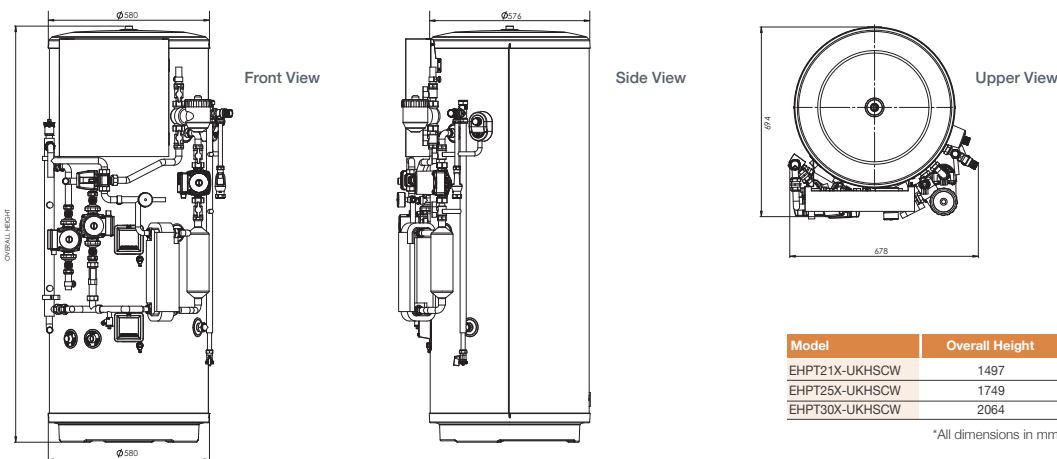
OPTIONAL SIMPLIFIED WIRELESS ROOM THERMOSTAT AND WIRELESS RECEIVER

PAR-WT50-E Controller and PAR-WR51-E Receiver

Cylinder includes: Flow Temperature Controller (FTC5) with Main Controller and Temperature Sensors, Magnetic & Cyclonic Filter, Pumps & Valves for Zone 1 and DHW use, Flow Sensor, Plate Heat Exchanger, Scale Trap, 3kW Immersion Heater and Expansion Vessel.

<sup>1</sup> MCB Sizes BS EN60898-2 & BS EN60947-2 <sup>2</sup> Optional 2 zone accessory pack available

#### DIMENSIONS



Telephone: 01707 282880

email: heating@meuk.mee.com web: heating.mitsubishielectric.co.uk

UNITED KINGDOM Mitsubishi Electric Europe Living Environmental Systems Division  
Travellers Lane, Hatfield, Hertfordshire, AL10 8XB, England General Enquiries Telephone: 01707 282880 Fax: 01707 278881

IRELAND Mitsubishi Electric Europe Westgate Business Park, Ballymount, Dublin 24, Ireland  
Telephone: Dublin (01) 419 8800 Fax: Dublin (01) 419 8890 International code: (003531)

Country of origin: United Kingdom - Japan - Thailand - Malaysia. ©Mitsubishi Electric Europe 2015. Mitsubishi and Mitsubishi Electric are trademarks of Mitsubishi Electric Europe B.V. The company reserves the right to make any variation in technical specification to the equipment described, or to withdraw or replace products without prior notification or public announcement. Mitsubishi Electric is constantly developing and improving its products. All descriptions, illustrations, drawings and specifications in this publication present only general particulars and shall not form part of any contract. All goods are supplied subject to the Company's General Conditions of Sale, a copy of which is available on request. Third-party product and brand names may be trademarks or registered trademarks of their respective owners.



Printed in August 2015 SAP No. 282531



www.greengateway.mitsubishielectric.co.uk

Mitsubishi Electric UK's commitment to the environment

Follow us @meuk\_les  
Follow us @green\_gateway

Mitsubishi Electric  
Living Environmental Systems UK

youtube.com/mitsubishielectric2