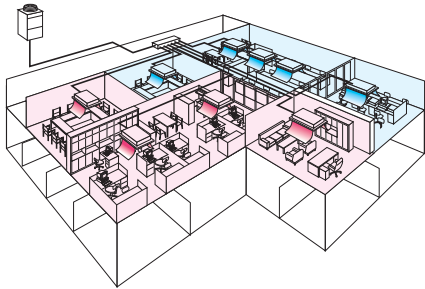


R2 Series Standard (8-18hp)

Simultaneous Heating and Cooling with Heat Recovery Outdoor Unit



Setting the standard in efficiency

Throughout the year, many buildings require cooling in some areas and heating in others - even in adjacent rooms. The outstanding City Multi R2 system meets this requirement by distributing surplus heat from cooling operations (and vice versa) to rooms where it is needed. This efficiency can result in energy savings of up to 30% over conventional systems.

Key Features

- Easy to install unique 2-pipe technology means minimal disruption, quicker installation and less connections than 3 pipe equivalents
- Designed from day 1 for seasonal efficiency
- New energy-saving inverter driven outdoor compressor with very low start currents
- Improved flow distribution of the refrigerant circuit and redesigned bellmouth grille to minimise power input
- Reduced standby power by up to 50% using induction heated compressor
- Automated dynamic control of refrigerant evaporating temperature based on internal load, provides added comfort whilst improving seasonal efficiency
- Increase and fix system evaporating temperature to enable increased indoor unit SHF, air off temperature conditions and therefore efficiency and comfort
- Compact chassis for easier installation - no requirement for plant rooms or bulky service shafts
- The choice to either provide standard reverse defrost or can continue to provide indoor units heat during the defrost cycle by utilising hot gas defrost technology
- Reduced refrigerant volume - ideal for compliance with EN378 and for help with BREEAM points

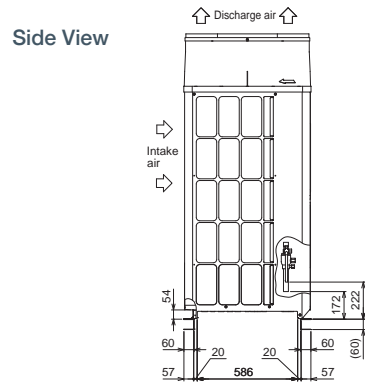


OUTDOOR UNITS		PURY-P200YLM-A1	PURY-P250YLM-A1	PURY-P300YLM-A1	PURY-P350YLM-A1	PURY-P400YLM-A1	PURY-P450YLM-A1
CAPACITY (kW)	Heating (nominal)	25.0	31.5	37.5	45.0	45.0	56.0
	Cooling (nominal)	22.4	28.0	33.5	40.0	45.0	50.0
	High Performance Heating (UK)	25.0	31.5	35.6	42.8	47.5	50.7
	COP Priority Heating (UK)	22.8	28.7	32.3	38.7	43.0	48.7
	Cooling (UK)	20.0	25.0	29.8	35.6	40.1	44.4
POWER INPUT (kW)	Heating (nominal)	5.49	7.32	9.37	11.59	11.42	14.93
	Cooling (nominal)	5.29	6.98	9.10	11.76	13.71	14.32
	High Performance Heating (UK)	6.92	9.22	12.51	15.47	15.25	17.09
	COP Priority Heating (UK)	5.46	7.28	9.14	11.30	11.13	13.74
	Cooling (UK)	3.07	4.05	5.87	7.59	8.84	9.02
COP / EER (nominal)	4.55 / 4.23	4.30 / 4.01	4.00 / 3.68	3.88 / 3.40	3.94 / 3.28	3.75 / 3.49	
SCOP / SEER (system)	- / -	- / -	- / -	- / -	- / -	- / -	
MAX No. Of CONNECTABLE INDOOR UNITS		20	25	30	35	40	45
MAX CONNECTABLE CAPACITY		50-150% OU Capacity	50-150% OU Capacity	50-150% OU Capacity	50-150% OU Capacity	50-150% OU Capacity	50-150% OU Capacity
AIRFLOW (m ³ /min)	High	185	185	230	230	230	320
PIPE SIZE mm (in)	Gas	15.88 (5/8")	19.05 (3/4")	19.05 (3/4")	19.05 (3/4")	22.2 (7/8")	22.2 (7/8")
	Liquid	19.05 (3/4")	22.2 (7/8")	22.2 (7/8")	28.58 (1-1/8")	28.58 (1-1/8")	28.58 (1-1/8")
SOUND PRESSURE LEVEL (dBA)		59	60	62.5	62.5	62.5	62.5
SOUND POWER LEVEL (dBA)		82.5	83.5	86	86	86	86
WEIGHT (kg)		205	205	248	248	246	321
DIMENSIONS (mm)	Width	920	920	1220	1220	1220	1750
	Depth	740	740	740	740	740	740
	(1650mm without legs)	1710	1710	1710	1710	1710	1710
ELECTRICAL SUPPLY*		380-415v, 50Hz	380-415v, 50Hz	380-415v, 50Hz	380-415v, 50Hz	380-415v, 50Hz	380-415v, 50Hz
PHASE*		Three	Three	Three	Three	Three	Three
STARTING CURRENT (A)*		8	8	8	8	8	8
NOMINAL SYSTEM RUNNING CURRENT (A)* Heating / Cooling [MAX]		8.8 / 8.4 [16.1]	11.7 / 11.1 [17.3]	15.0 / 14.5 [22.2]	18.5 / 18.8 [27.8]	18.3 / 21.9 [32.4]	23.9 / 22.9 [35.9]
GUARANTEED OPERATING RANGE (°C) Heating / Cooling		-20-15.5 / -5-46	-20-15.5 / -5-46	-20-15.5 / -5-46	-20-15.5 / -5-46	-20-15.5 / -5-46	-20-15.5 / -5-46
FUSE RATING (MCB sizes BS EN 60947-2) - (A)*		1 x 20	1 x 20	1 x 25	1 x 32	1 x 40	1 x 40
MAINS CABLE No. Cores*		4 + earth	4 + earth	4 + earth	4 + earth	4 + earth	4 + earth

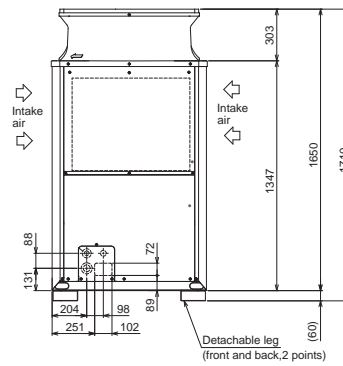
Note: * A separate power supply is required for each module. Where more than one figure is quoted there are multiple modules. Price includes Twinning Kit where necessary.

Product Dimensions

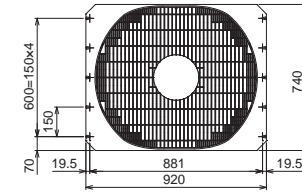
PURY-P200/250YLM-A1



Front View

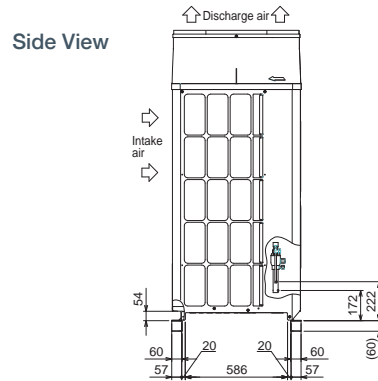


Upper View

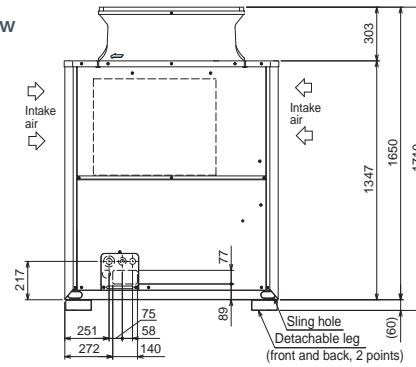


Product Dimensions

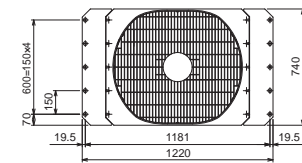
PURY-P300/350/400YLM-A1



Front View

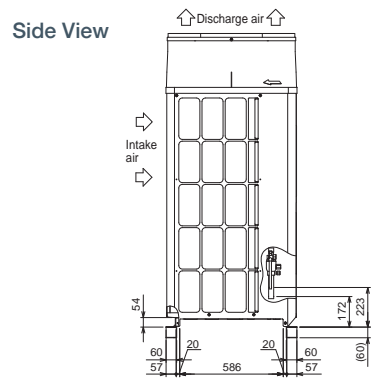


Upper View

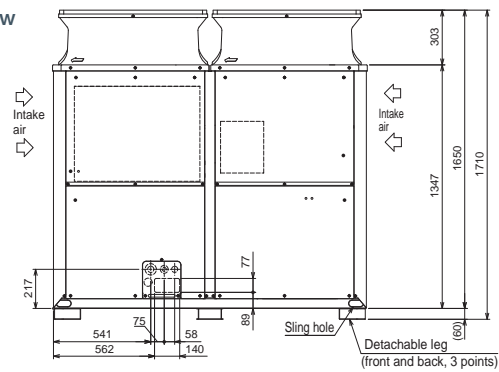


Product Dimensions

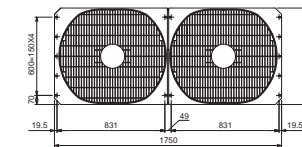
PURY-P450YLM-A1



Front View



Upper View



R2 Series Standard (20-28hp)

Simultaneous Heating and Cooling with Heat Recovery Outdoor Unit



Setting the standard in efficiency

Throughout the year, many buildings require cooling in some areas and heating in others - even in adjacent rooms. The outstanding City Multi R2 system meets this requirement by distributing surplus heat from cooling operations (and vice versa) to rooms where it is needed. This efficiency can result in energy savings of up to 30% over conventional systems.

Key Features

- Easy to install unique 2-pipe technology means minimal disruption, quicker installation and less connections than 3 pipe equivalents
- Designed from day 1 for seasonal efficiency
- New energy-saving inverter driven outdoor compressor with very low start currents
- Improved flow distribution of the refrigerant circuit and redesigned bellmouth grille to minimise power input
- Reduced standby power by up to 50% using induction heated compressor
- Automated dynamic control of refrigerant evaporating temperature based on internal load, provides added comfort whilst improving seasonal efficiency
- Increase and fix system evaporating temperature to enable increased indoor unit SHF, air off temperature conditions and therefore efficiency and comfort
- Compact chassis for easier installation - no requirement for plant rooms or bulky service shafts
- The choice to either provide standard reverse defrost or can continue to provide indoor units heat during the defrost cycle by utilising hot gas defrost technology
- Reduced refrigerant volume – ideal for compliance with EN378 and for help with BREEAM points

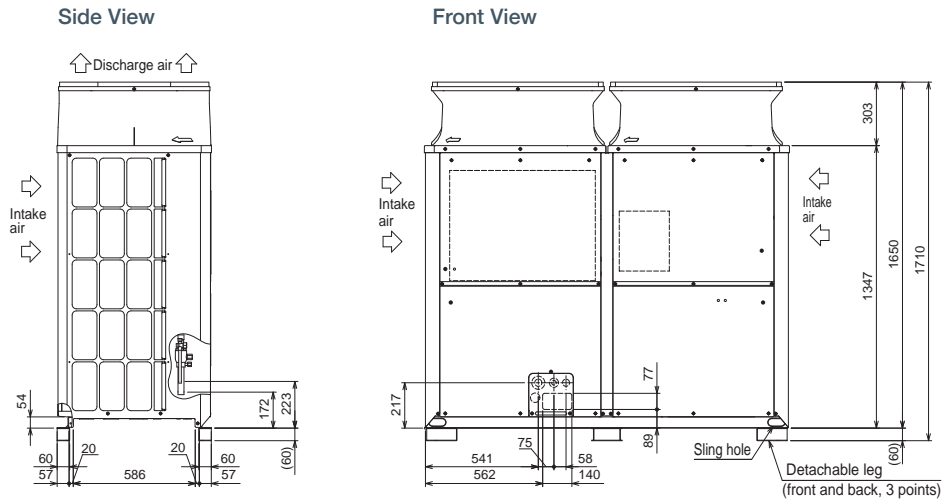


OUTDOOR UNITS		PURY-P500YSLM-A1	PURY-P550YSLM-A1	PURY-P600YSLM-A1	PURY-P650YSLM-A1	PURY-P700YSLM-A1
CAPACITY (kW)	Heating (nominal)	58.0	69.0	76.5	81.5	88.0
	Cooling (nominal)	56.0	63.0	69.0	73.0	80.0
	High Performance Heating (UK)	57.0	62.4	69.2	73.8	88.0
	COP Priority Heating (UK)	54.8	60.0	66.6	70.9	76.6
	Cooling (UK)	49.7	55.9	61.2	64.8	69.5
POWER INPUT (kW)	Heating (nominal)	16.06	16.62	19.12	20.68	22.68
	Cooling (nominal)	17.77	16.89	19.32	21.28	24.24
	High Performance Heating (UK)	18.39	19.03	21.89	23.68	28.58
	COP Priority Heating (UK)	14.78	15.29	17.59	19.03	21.09
	Cooling (UK)	11.20	10.64	12.17	13.41	15.51
COP / EER (nominal)	3.61 / 3.15	4.15 / 3.73	4.00 / 3.57	3.94 / 3.43	3.88 / 3.30	
SCOP / SEER (system)	- / -	- / -	- / -	- / -	- / -	
MAX No. OF CONNECTABLE INDOOR UNITS		50	50	50	50	50
MAX CONNECTABLE CAPACITY		50-150% OU Capacity	50-150% OU Capacity	50-150% OU Capacity	50-150% OU Capacity	50-150% OU Capacity
AIRFLOW (m³/min)	High	380	230 / 185	230 / 230	230 / 230	230 / 230
PIPE SIZE mm (in)	Gas	22.2 (7/8")	28.58 (1-1/8")	28.58 (1-1/8")	28.58 (1-1/8")	28.58 (1-1/8")
	Liquid	28.58 (1-1/8")	28.58 (1-1/8")	28.58 (1-1/8")	28.58 (1-1/8")	34.93 (1-3/8")
SOUND PRESSURE LEVEL (dBA)		63.5	64.5	65.5	65.5	65.5
SOUND POWER LEVEL (dBA)		87	88	89	89	89
WEIGHT (kg)		321	248 + 205	248 + 248	248 + 248	248 + 248
DIMENSIONS (mm)	Width	1750	1220 + 920	1220 + 1220	1220 + 1220	1220 + 1220
	Depth	740	740	740	740	740
	(1650mm without legs) Height	1710	1710	1710	1710	1710
ELECTRICAL SUPPLY*		380-415v, 50Hz	380-415v, 50Hz	380-415v, 50Hz	380-415v, 50Hz	380-415v, 50Hz
PHASE*		Three	Three	Three	Three	Three
STARTING CURRENT (A)*		8 / 8	8 / 8	8 / 8	8 / 8	8 / 8
NOMINAL SYSTEM RUNNING CURRENT (A)* Heating/Cooling [MAX]		25.7 / 28.4 [41.9]	26.6 / 27.0 [22.2+17.3]	30.6 / 30.9 [22.2+22.2]	33.1 / 34.1 [27.8+22.2]	36.3 / 38.8 [27.8+27.8]
GUARANTEED OPERATING RANGE (°C) Heating / Cooling		-20-15.5 / -5-46	-20-15.5 / -5-46	-20-15.5 / -5-46	-20-15.5 / -5-46	-20-15.5 / -5-46
FUSE RATING (MCB sizes BS EN 60947-2) - (A)*		1 x 50	1 x 25 / 1 x 20	1 x 25 / 1 x 25	1 x 32 / 1 x 25	1 x 32 / 1 x 32
MAINS CABLE No. Cores*		4 + earth	4 + earth	4 + earth	4 + earth	4 + earth

Note: * A separate power supply is required for each module. Where more than one figure is quoted there are multiple modules.

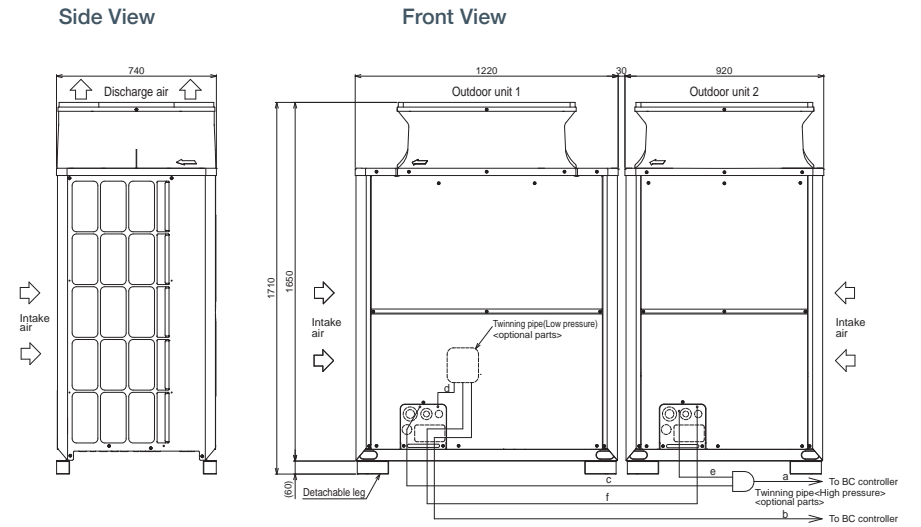
Product Dimensions

PURY-P500YLM-A1



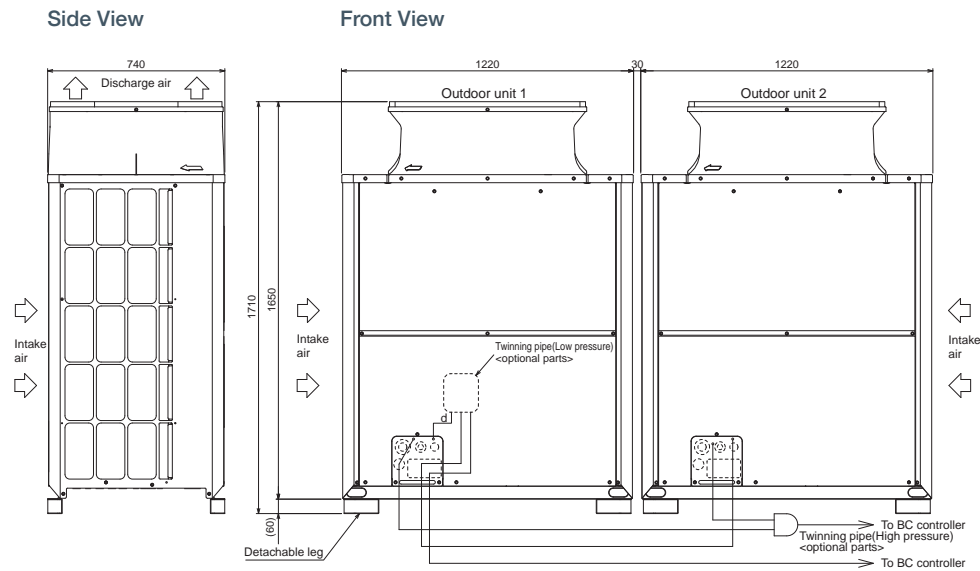
Product Dimensions

PURY-P550YSLM-A1



Product Dimensions

PURY-P600/650/700YSLM-A1



R2 Series Standard (30-36hp)

Simultaneous Heating and Cooling with Heat Recovery Outdoor Unit



Setting the standard in efficiency

Throughout the year, many buildings require cooling in some areas and heating in others - even in adjacent rooms. The outstanding City Multi R2 system meets this requirement by distributing surplus heat from cooling operations (and vice versa) to rooms where it is needed. This efficiency can result in energy savings of up to 30% over conventional systems.

Key Features

- Easy to install unique 2-pipe technology means minimal disruption, quicker installation and less connections than 3 pipe equivalents
- Designed from day 1 for seasonal efficiency
- New energy-saving inverter driven outdoor compressor with very low start currents
- Improved flow distribution of the refrigerant circuit and redesigned bellmouth grille to minimise power input
- Reduced standby power by up to 50% using induction heated compressor
- Automated dynamic control of refrigerant evaporating temperature based on internal load, provides added comfort whilst improving seasonal efficiency
- Increase and fix system evaporating temperature to enable increased indoor unit SHF, air off temperature conditions and therefore efficiency and comfort
- Compact chassis for easier installation - no requirement for plant rooms or bulky service shafts
- The choice to either provide standard reverse defrost or can continue to provide indoor units heat during the defrost cycle by utilising hot gas defrost technology
- Reduced refrigerant volume - ideal for compliance with EN378 and for help with BREEAM points



OUTDOOR UNITS		PURY-P750YSLM-A1	PURY-P800YSLM-A1	PURY-P850YSLM-A1	PURY-P900YSLM-A1
CAPACITY (kW)	Heating (nominal)	90.0	90.0	101.0	113.0
	Cooling (nominal)	85.0	90.0	96.0	101.0
	High Performance Heating (UK)	95.0	100.0	102.6	107.4
	COP Priority Heating (UK)	82.7	87.0	95.0	99.4
	Cooling (UK)	73.8	78.2	85.2	89.6
POWER INPUT (kW)	Heating (nominal)	23.01	22.84	26.23	30.13
	Cooling (nominal)	26.23	28.30	29.26	29.79
	High Performance Heating (UK)	28.99	28.78	35.15	40.37
	COP Priority Heating (UK)	21.40	21.24	24.13	27.72
	Cooling (UK)	16.79	18.11	17.85	18.17
COP / EER (nominal)	3.91 / 3.24	3.94 / 3.18	3.85 / 3.28	3.75 / 3.39	
SCOP / SEER (system)	- / -	- / -	- / -	- / -	
MAX No. OF CONNECTABLE INDOOR UNITS	50	50	50	50	
MAX CONNECTABLE CAPACITY	50-150% OU Capacity	50-150% OU Capacity	50-150% OU Capacity	50-150% OU Capacity	
AIRFLOW (m ³ /min)	High 230 / 230	230 / 230	320 / 230	320 / 320	
PIPE SIZE mm (in)	Gas	28.58 (1-1/8")	28.58 (1-1/8")	28.58 (1-1/8")	28.58 (1-1/8")
	Liquid	34.93 (1-3/8")	34.93 (1-3/8")	41.28 (1-5/8")	41.28 (1-5/8")
SOUND PRESSURE LEVEL (dBA)	65.5	65.5	65.5	65.5	
SOUND POWER LEVEL (dBA)	89	89	89	89	
WEIGHT (kg)	248 + 246	246 + 246	321 + 246	321 + 321	
DIMENSIONS (mm)	Width	1220 + 1220	1220 + 1220	1750 + 1220	1750 + 1750
	Depth	740	740	740	740
	Height (1650mm without legs)	1710	1710	1710	1710
ELECTRICAL SUPPLY*	380-415v, 50Hz	380-415v, 50Hz	380-415v, 50Hz	380-415v, 50Hz	
PHASE*	Three	Three	Three	Three	
STARTING CURRENT (A)*	8 / 8	8 / 8	8 / 8	8 / 8	
NOMINAL SYSTEM RUNNING CURRENT (A)* Heating/Cooling [MAX]	36.9 / 42.0 [32.4+27.8]	36.6 / 45.3 [32.4+32.4]	42.0 / 46.9 [35.3+32.4]	48.3 / 47.7 [35.3+35.3]	
GUARANTEED OPERATING RANGE (°C) Heating / Cooling	-20/-15.5 / -5/-46	-20/-15.5 / -5/-46	-20/-15.5 / -5/-46	-20/-15.5 / -5/-46	
FUSE RATING (MCB sizes BS EN 60947-2) - (A)*	1 x 40 / 1 x 32	1 x 40 / 1 x 40	1 x 40 / 1 x 40	1 x 40 / 1 x 40	
MAINS CABLE No. Cores*	4 + earth	4 + earth	4 + earth	4 + earth	

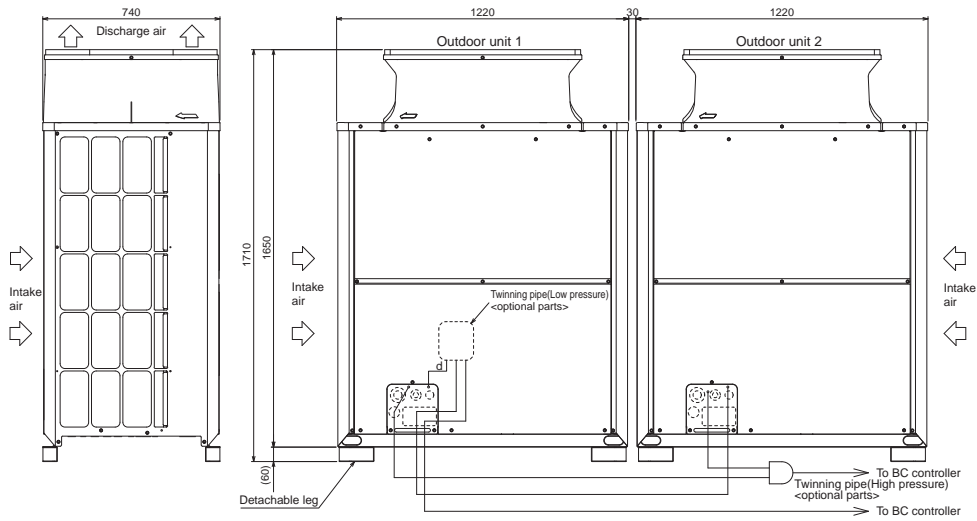
Note: * A separate power supply is required for each module. Where more than one figure is quoted there are multiple modules. Price includes Twinning Kit where necessary.

Product Dimensions

PURY-P750/800YSLM-A1

Side View

Front View

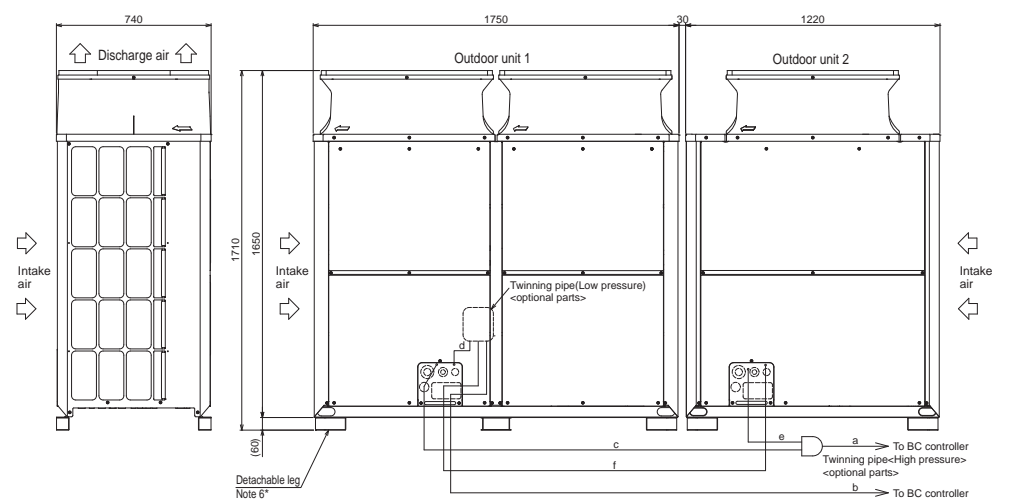


Product Dimensions

PURY-P850YSLM-A1

Side View

Front View



Product Dimensions

PURY-P900YSLM-A1

Side View

Front View

