

# SERVICE PARTS LIST FOR MITSUBISHI ELECTRIC PACKAGED AIR-CONDITIONERS

Series : PURY-P•YGM-A(-BS)

For use with the R410A

REVISED

June 2006

BWE0415A

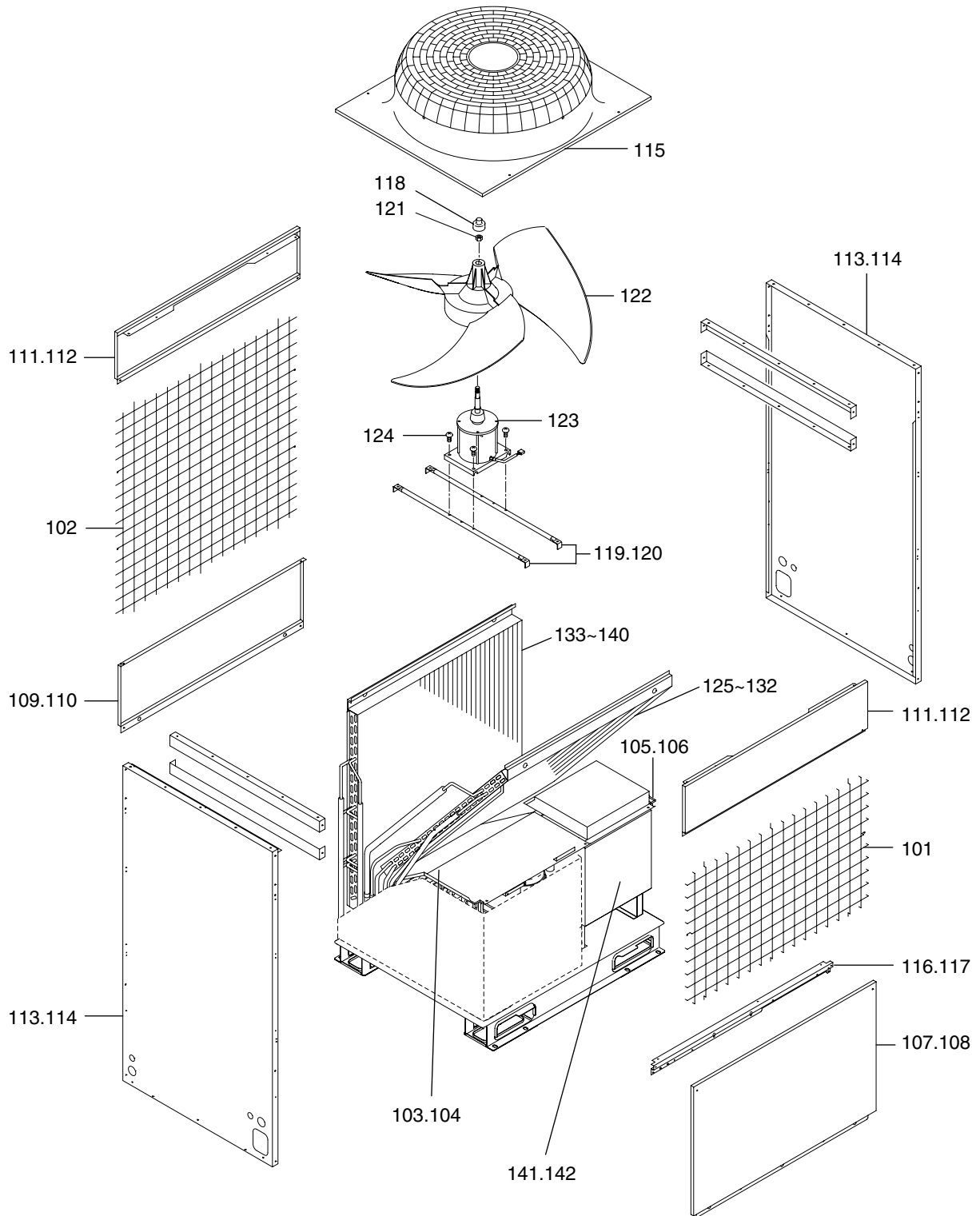
## INDEX

PURY-P200YGM-A(-BS)  
PURY-P250YGM-A(-BS)  
PURY-P300YGM-A(-BS)  
PURY-P350YGM-A(-BS)  
PURY-P400YGM-A(-BS)  
PURY-P450YGM-A(-BS)  
PURY-P500YGM-A(-BS)  
PURY-P550YGM-A(-BS)  
PURY-P600YGM-A(-BS)  
PURY-P650YGM-A(-BS)



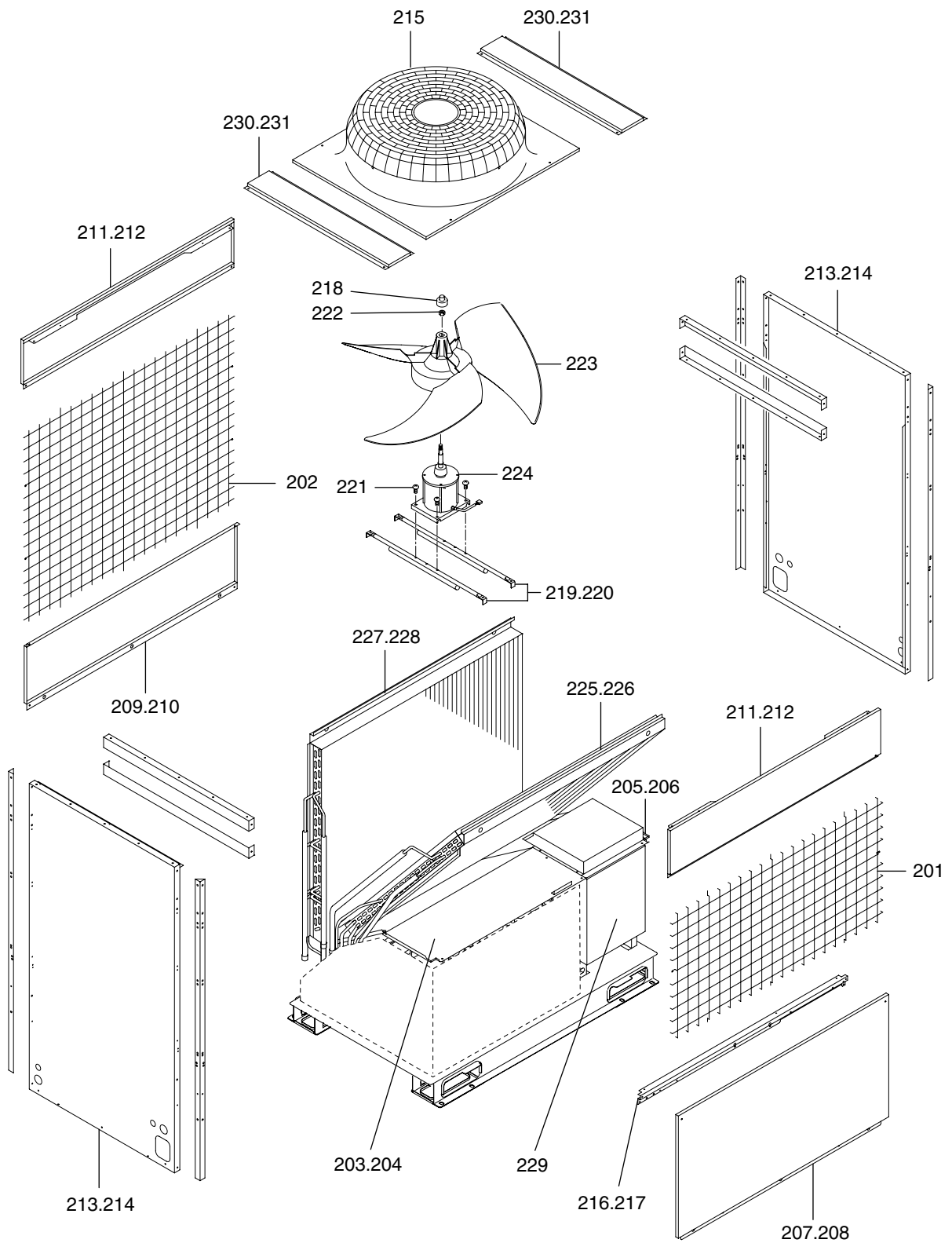
PURY-P200,P250YGM-A(-BS)  
PURY-P300,P350YGM-A(-BS)

EXTERNAL PARTS & BLOWER PARTS (1)



No.	Part No.	RoHS Compliant : G		Spec.	PURY-P200YGM-A	PURY-P250YGM-A	PURY-P300YGM-A	PURY-P350YGM-A	Dwg. No.	Price	Revision History
			Part Name								
101	R63 E66 611	G	Guard F assy		1	1	1	1			A
102	R63 A42 638	G	Guard B assy		1	1	1	1			A
103	R63 6A7 667	G	Partition board L assy		1	1	1	1			A
104	R63 6A8 667	G	Partition board L assy								A
105	R63 R37 668	G	Partition board R assy		1	1	1	1			A
106	R63 R38 668	G	Partition board R assy								A
107	R63 R34 651	G	Panel F		1	1	1	1			A
108	R63 R36 651	G	Panel F								A
109	R63 Y32 652	G	Panel B		1	1	1	1			A
110	R63 R36 677	G	Panel B								A
111	R63 L78 653	G	Panel FU		2	2	2	2			A
112	R63 R36 652	G	Panel FU								A
113	R63 N78 661	G	Panel S		2	2	2	2			A
114	R63 R36 661	G	Panel S								A
115	R63 N78 118	G	Fan guard		1	1	1	1			A
116	R63 A42 659	G	Front panel		1	1	1	1			A
117	R63 A43 659	G	Front panel								A
118	R61 A69 086	G	Cap		1	1	1	1			A
119	R63 A42 140	G	Fan stand		2	2	2	2			A
120	R63 A43 140	G	Fan stand								A
121	R63 A42 122	G	Nut 16		1	1	1	1			A
122	R63 N78 115	G	Propeller fan	750D	1	1	1	1			A
123	R63 Y43 221	G	Motor YC380IA	342V 33Hz	1	1	1	1			A
124	R63 E90 087	G	Screw 6×14		4	4	4	4			A
125	R63 Y22 482	G	Heat exchanger F		1						A
126	R63 6A9 480	G	Heat exchanger F								A
127	R63 Y87 481	G	Heat exchanger F			1					A
128	R63 5A3 480	G	Heat exchanger F								A
129	R63 Y88 481	G	Heat exchanger F				1				A
130	R63 5A4 480	G	Heat exchanger F								A
131	R63 Y89 481	G	Heat exchanger F					1			A
132	R63 5A5 480	G	Heat exchanger F								A
133	R63 Y24 482	G	Heat exchanger B		1						A
134	R63 6A9 481	G	Heat exchanger B								A
135	R63 Y92 481	G	Heat exchanger B			1					A
136	R63 5A3 481	G	Heat exchanger B								A
137	R63 Y93 481	G	Heat exchanger B				1				A
138	R63 5A4 481	G	Heat exchanger B								A
139	R63 Y94 481	G	Heat exchanger B					1			A
140	R63 5A5 481	G	Heat exchanger B								A
141	R63 Y23 305	G	Control box	R-P200YGM	1						A
142	R63 Y24 305	G	Control box	R-P250YGM		1	1	1			A

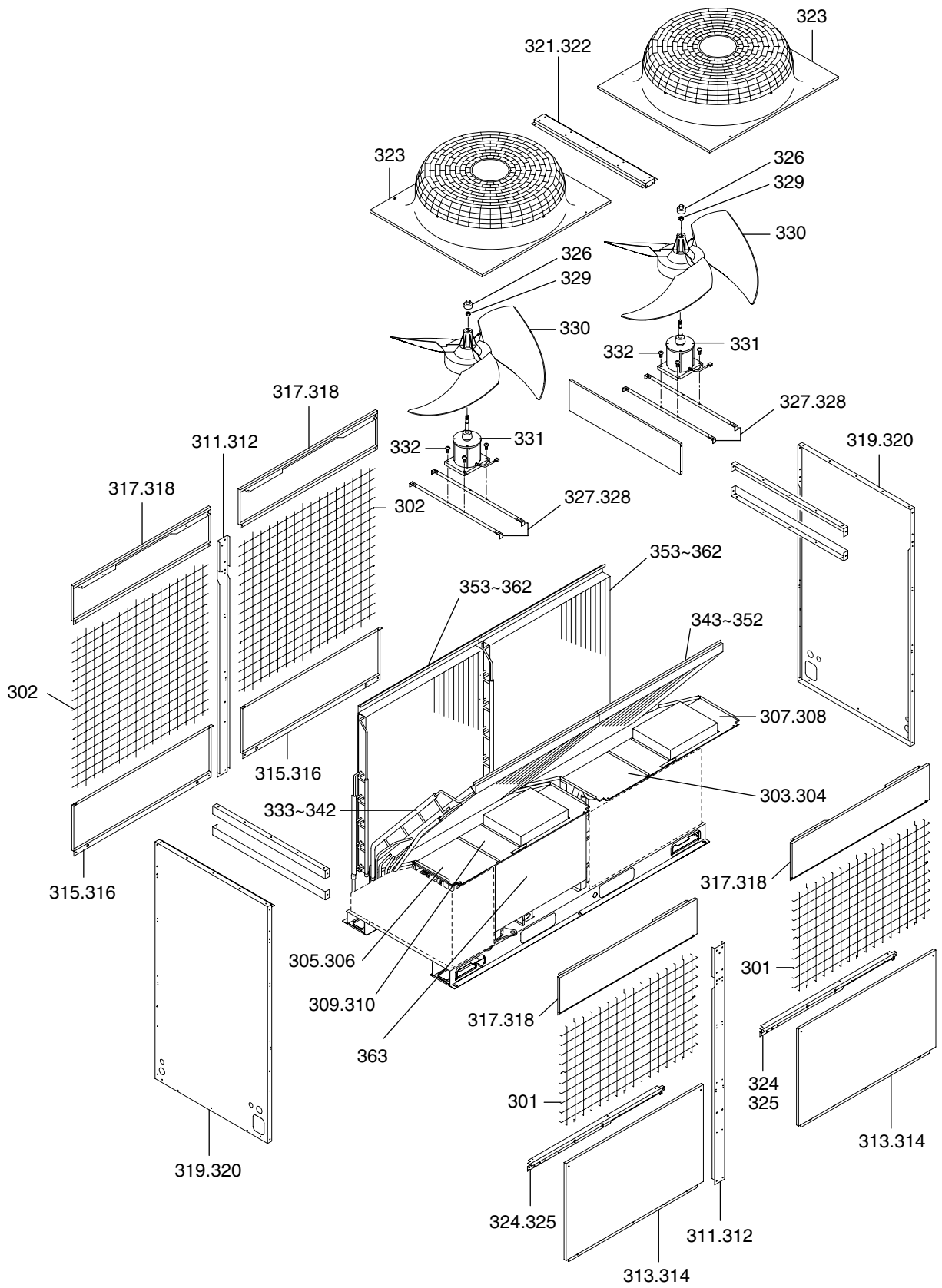
No.	Part No.	RoHS Compliant : G		Spec.	PURY-P200YGM-A-BS	PURY-P250YGM-A-BS	PURY-P300YGM-A-BS	PURY-P350YGM-A-BS	Dwg. No.	Price	Revision History
			Part Name								
101	R63 E66 611	G	Guard F assy		1	1	1	1			A
102	R63 A42 638	G	Guard B assy		1	1	1	1			A
103	R63 6A7 667	G	Partition board L assy								A
104	R63 6A8 667	G	Partition board L assy		1	1	1	1			A
105	R63 R37 668	G	Partition board R assy								A
106	R63 R38 668	G	Partition board R assy		1	1	1	1			A
107	R63 R34 651	G	Panel F								A
108	R63 R36 651	G	Panel F		1	1	1	1			A
109	R63 Y32 652	G	Panel B								A
110	R63 R36 677	G	Panel B		1	1	1	1			A
111	R63 L78 653	G	Panel FU								A
112	R63 R36 652	G	Panel FU		2	2	2	2			A
113	R63 N78 661	G	Panel S								A
114	R63 R36 661	G	Panel S		2	2	2	2			A
115	R63 N78 118	G	Fan guard		1	1	1	1			A
116	R63 A42 659	G	Front panel								A
117	R63 A43 659	G	Front panel		1	1	1	1			A
118	R61 A69 086	G	Cap		1	1	1	1			A
119	R63 A42 140	G	Fan stand								A
120	R63 A43 140	G	Fan stand		2	2	2	2			A
121	R63 A42 122	G	Nut 16		1	1	1	1			A
122	R63 N78 115	G	Propeller fan	750D	1	1	1	1			A
123	R63 Y43 221	G	Motor YC380IA	342V 33Hz	1	1	1	1			A
124	R63 E90 087	G	Screw 6×14		4	4	4	4			A
125	R63 Y22 482	G	Heat exchanger F								A
126	R63 6A9 480	G	Heat exchanger F		1						A
127	R63 Y87 481	G	Heat exchanger F								A
128	R63 5A3 480	G	Heat exchanger F			1					A
129	R63 Y88 481	G	Heat exchanger F								A
130	R63 5A4 480	G	Heat exchanger F				1				A
131	R63 Y89 481	G	Heat exchanger F								A
132	R63 5A5 480	G	Heat exchanger F					1			A
133	R63 Y24 482	G	Heat exchanger B								A
134	R63 6A9 481	G	Heat exchanger B		1						A
135	R63 Y92 481	G	Heat exchanger B								A
136	R63 5A3 481	G	Heat exchanger B			1					A
137	R63 Y93 481	G	Heat exchanger B								A
138	R63 5A4 481	G	Heat exchanger B				1				A
139	R63 Y94 481	G	Heat exchanger B								A
140	R63 5A5 481	G	Heat exchanger B					1			A
141	R63 Y23 305	G	Control box	R-P200YGM	1						A
142	R63 Y24 305	G	Control box	R-P250YGM		1	1	1			A



No.	Part No.	RoHS Compliant : G		Spec.	PURY-P400YGM-A	PURY-P400YGM-A-BS			Dwg. No.	Price	Revision History
			Part Name								
201	R63 A52 637	G	Guard F assy		1	1					A
202	R63 A52 638	G	Guard B assy		1	1					A
203	R63 Y28 629	G	Partition board L assy		1						A
204	R63 Y29 629	G	Partition board L assy			1					A
205	R63 R37 668	G	Partition board R assy		1						A
206	R63 R38 668	G	Partition board R assy			1					A
207	R63 R55 651	G	Panel F		1						A
208	R63 R57 651	G	Panel F			1					A
209	R63 Y33 629	G	Panel B		1						A
210	R63 R57 677	G	Panel B			1					A
211	R63 M23 651	G	Panel FU		2						A
212	R63 R57 652	G	Panel FU			2					A
213	R63 N78 661	G	Panel S		2						A
214	R63 R36 661	G	Panel S			2					A
215	R63 N78 118	G	Fan guard		1	1					A
216	R63 A52 659	G	Front panel		1						A
217	R63 A53 659	G	Front panel			1					A
218	R61 A69 086	G	Cap		1	1					A
219	R63 432 140	G	Fan stand		2						A
220	R63 433 140	G	Fan stand			2					A
221	R63 E90 087	G	Screw 6x14		4	4					A
222	R63 A42 122	G	Nut 16		1	1					A
223	R63 N78 115	G	Propeller fan	750D	1	1					A
224	R63 Y44 221	G	Motor EEOK-IOTV1 640W	342V 40.5Hz	1	1					A
225	R63 Y26 482	G	Heat exchanger F		1						A
226	R63 7A6 480	G	Heat exchanger F			1					A
227	R63 Y28 482	G	Heat exchanger B		1						A
228	R63 7A6 481	G	Heat exchanger B			1					A
229	R63 Y25 305	G	Control box	R-P400YGM	1	1					A
230	R63 P85 499	G	Cover assy		2						A
231	R63 R57 667	G	Cover assy			2					A

PURY-P450,P500YGM-A(-BS)  
 PURY-P550,P600YGM-A(-BS)  
 PURY-P650YGM-A(-BS)

EXTERNAL PARTS & BLOWER PARTS (3)



PURY-P450,P500YGM-A(-BS)  
 PURY-P550,P600YGM-A(-BS)  
 PURY-P650YGM-A(-BS)

EXTERNAL PARTS & BLOWER PARTS (3)

No.	Part No.	RoHS Compliant : G		Spec.	PURY-P450YGM-A	PURY-P500YGM-A	PURY-P550YGM-A	PURY-P600YGM-A	Dwg. No.	Price	Revision History
			Part Name								
301	R63 E66 611	G	Guard F assy		2	2	2	2			A
302	R63 A42 638	G	Guard B assy		2	2	2	2			A
303	R63 R34 667	G	Partition board L assy		1	1	1	1			A
304	R63 R35 667	G	Partition board L assy								A
305	R63 6A7 667	G	Partition board L assy		1	1	1	1			A
306	R63 6A8 667	G	Partition board L assy								A
307	R63 R43 668	G	Partition board R assy		1	1	1	1			A
308	R63 R44 668	G	Partition board R assy								A
309	R63 R43 667	G	Partition board R assy		1	1	1	1			A
310	R63 R44 667	G	Partition board R assy								A
311	R63 R43 626	G	Stay M		2	2	2	2			A
312	R63 R44 626	G	Stay M								A
313	R63 R34 651	G	Panel F		2	2	2	2			A
314	R63 R36 651	G	Panel F								A
315	R63 Y32 652	G	Panel B		2	2	2	2			A
316	R63 R36 677	G	Panel B								A
317	R63 L78 653	G	Panel FU		4	4	4	4			A
318	R63 R36 652	G	Panel FU								A
319	R63 N78 661	G	Panel S		2	2	2	2			A
320	R63 R36 661	G	Panel S								A
321	R63 E66 125	G	Beam M		1	1	1	1			A
322	R63 E67 125	G	Beam M								A
323	R63 N78 118	G	Fan guard		2	2	2	2			A
324	R63 A42 659	G	Front panel		2	2	2	2			A
325	R63 A43 659	G	Front panel								A
326	R61 A69 086	G	Cap		2	2	2	2			A
327	R63 A42 140	G	Fan stand		4	4	4	4			A
328	R63 A43 140	G	Fan stand								A
329	R63 A42 122	G	Nut 16		2	2	2	2			A
330	R63 N78 115	G	Propeller fan	750D	2	2	2	2			A
331	R63 Y43 221	G	Motor YC380IA	342V 33Hz	2	2	2	2			A
332	R63 E90 087	G	Screw 6x14		8	8	8	8			A
333	R63 Y87 481	G	Heat exchanger F		1						A
334	R63 5A3 480	G	Heat exchanger F								A
335	R63 Y88 481	G	Heat exchanger F			1					A
336	R63 5A4 480	G	Heat exchanger F								A
337	R63 Y89 481	G	Heat exchanger F				1				A
338	R63 5A5 480	G	Heat exchanger F								A
339	R63 Y90 481	G	Heat exchanger F					1			A
340	R63 5A9 480	G	Heat exchanger F								A
341	R63 Y91 481	G	Heat exchanger F								A
342	R63 6A0 480	G	Heat exchanger F								A
343	R63 Y02 482	G	Heat exchanger F		1						A
344	R63 6A0 482	G	Heat exchanger F								A
345	R63 Y02 482	G	Heat exchanger F			1					A



PURY-P450,P500YGM-A(-BS)  
PURY-P550,P600YGM-A(-BS)  
PURY-P650YGM-A(-BS)

EXTERNAL PARTS & BLOWER PARTS (3)

No.	Part No.	RoHS Compliant : G		Spec.	PURY-P450YGM-A	PURY-P500YGM-A	PURY-P550YGM-A	PURY-P600YGM-A	Dwg. No.	Price	Revision History
			Part Name								
346	R63 6A0 482	G	Heat exchanger F								A
347	R63 Y02 482	G	Heat exchanger F				1				A
348	R63 6A0 482	G	Heat exchanger F								A
349	R63 Y02 482	G	Heat exchanger F					1			A
350	R63 6A0 482	G	Heat exchanger F								A
351	R63 Y02 482	G	Heat exchanger F								A
352	R63 6A0 482	G	Heat exchanger F								A
353	R63 Y92 481	G	Heat exchanger B		2						A
354	R63 5A3 481	G	Heat exchanger B								A
355	R63 Y93 481	G	Heat exchanger B			2					A
356	R63 5A4 481	G	Heat exchanger B								A
357	R63 Y94 481	G	Heat exchanger B				2				A
358	R63 5A5 481	G	Heat exchanger B								A
359	R63 Y95 481	G	Heat exchanger B					2			A
360	R63 5A9 481	G	Heat exchanger B								A
361	R63 Y96 481	G	Heat exchanger B								A
362	R63 6A0 481	G	Heat exchanger B								A
363	R63 Y26 305	G	Control box	R-P650YGM	1	1	1	1			A

PURY-P450,P500YGM-A(-BS)  
 PURY-P550,P600YGM-A(-BS)  
 PURY-P650YGM-A(-BS)

EXTERNAL PARTS & BLOWER PARTS (3)

No.	Part No.	RoHS Compliant : G		Spec.	PURY-P650YGM-A	PURY-P450YGM-A-BS	PURY-P500YGM-A-BS	PURY-P550YGM-A-BS	Dwg. No.	Price	Revision History
			Part Name								
301	R63 E66 611	G	Guard F assy		2	2	2	2			A
302	R63 A42 638	G	Guard B assy		2	2	2	2			A
303	R63 R34 667	G	Partition board L assy		1						A
304	R63 R35 667	G	Partition board L assy			1	1	1			A
305	R63 6A7 667	G	Partition board L assy		1						A
306	R63 6A8 667	G	Partition board L assy			1	1	1			A
307	R63 R43 668	G	Partition board R assy		1						A
308	R63 R44 668	G	Partition board R assy			1	1	1			A
309	R63 R43 667	G	Partition board R assy		1						A
310	R63 R44 667	G	Partition board R assy			1	1	1			A
311	R63 R43 626	G	Stay M		2						A
312	R63 R44 626	G	Stay M			2	2	2			A
313	R63 R34 651	G	Panel F		2						A
314	R63 R36 651	G	Panel F			2	2	2			A
315	R63 Y32 652	G	Panel B		2						A
316	R63 R36 677	G	Panel B			2	2	2			A
317	R63 L78 653	G	Panel FU		4						A
318	R63 R36 652	G	Panel FU			4	4	4			A
319	R63 N78 661	G	Panel S		2						A
320	R63 R36 661	G	Panel S			2	2	2			A
321	R63 E66 125	G	Beam M		1						A
322	R63 E67 125	G	Beam M			1	1	1			A
323	R63 N78 118	G	Fan guard		2	2	2	2			A
324	R63 A42 659	G	Front panel		2						A
325	R63 A43 659	G	Front panel			2	2	2			A
326	R61 A69 086	G	Cap		2	2	2	2			A
327	R63 A42 140	G	Fan stand		4						A
328	R63 A43 140	G	Fan stand			4	4	4			A
329	R63 A42 122	G	Nut 16		2	2	2	2			A
330	R63 N78 115	G	Propeller fan	750D	2	2	2	2			A
331	R63 Y43 221	G	Motor YC380IA	342V 33Hz	2	2	2	2			A
332	R63 E90 087	G	Screw 6x14		8	8	8	8			A
333	R63 Y87 481	G	Heat exchanger F								A
334	R63 5A3 480	G	Heat exchanger F			1					A
335	R63 Y88 481	G	Heat exchanger F								A
336	R63 5A4 480	G	Heat exchanger F				1				A
337	R63 Y89 481	G	Heat exchanger F								A
338	R63 5A5 480	G	Heat exchanger F					1			A
339	R63 Y90 481	G	Heat exchanger F								A
340	R63 5A9 480	G	Heat exchanger F								A
341	R63 Y91 481	G	Heat exchanger F		1						A
342	R63 6A0 480	G	Heat exchanger F								A
343	R63 Y02 482	G	Heat exchanger F								A
344	R63 6A0 482	G	Heat exchanger F			1					A
345	R63 Y02 482	G	Heat exchanger F								A

PURY-P450,P500YGM-A(-BS)  
 PURY-P550,P600YGM-A(-BS)  
 PURY-P650YGM-A(-BS)

EXTERNAL PARTS & BLOWER PARTS (3)

No.	Part No.	RoHS Compliant : G		Spec.	PURY-P650YGM-A	PURY-P450YGM-A-BS	PURY-P500YGM-A-BS	PURY-P550YGM-A-BS	Dwg. No.	Price	Revision History
			Part Name								
346	R63 6A0 482	G	Heat exchanger F				1				A
347	R63 Y02 482	G	Heat exchanger F								A
348	R63 6A0 482	G	Heat exchanger F					1			A
349	R63 Y02 482	G	Heat exchanger F								A
350	R63 6A0 482	G	Heat exchanger F								A
351	R63 Y02 482	G	Heat exchanger F		1						A
352	R63 6A0 482	G	Heat exchanger F								A
353	R63 Y92 481	G	Heat exchanger B								A
354	R63 5A3 481	G	Heat exchanger B			2					A
355	R63 Y93 481	G	Heat exchanger B								A
356	R63 5A4 481	G	Heat exchanger B				2				A
357	R63 Y94 481	G	Heat exchanger B								A
358	R63 5A5 481	G	Heat exchanger B					2			A
359	R63 Y95 481	G	Heat exchanger B								A
360	R63 5A9 481	G	Heat exchanger B								A
361	R63 Y96 481	G	Heat exchanger B		2						A
362	R63 6A0 481	G	Heat exchanger B								A
363	R63 Y26 305	G	Control box	R-P650YGM	1	1	1	1			A

PURY-P450,P500YGM-A(-BS)  
 PURY-P550,P600YGM-A(-BS)  
 PURY-P650YGM-A(-BS)

EXTERNAL PARTS & BLOWER PARTS (3)

No.	Part No.	RoHS Compliant : G		Spec.	PURY-P600YGM-A-BS	PURY-P650YGM-A-BS			Dwg. No.	Price	Revision History
			Part Name								
301	R63 E66 611	G	Guard F assy		2	2					A
302	R63 A42 638	G	Guard B assy		2	2					A
303	R63 R34 667	G	Partition board L assy								A
304	R63 R35 667	G	Partition board L assy		1	1					A
305	R63 6A7 667	G	Partition board L assy								A
306	R63 6A8 667	G	Partition board L assy		1	1					A
307	R63 R43 668	G	Partition board R assy								A
308	R63 R44 668	G	Partition board R assy		1	1					A
309	R63 R43 667	G	Partition board R assy								A
310	R63 R44 667	G	Partition board R assy		1	1					A
311	R63 R43 626	G	Stay M								A
312	R63 R44 626	G	Stay M		2	2					A
313	R63 R34 651	G	Panel F								A
314	R63 R36 651	G	Panel F		2	2					A
315	R63 Y32 652	G	Panel B								A
316	R63 R36 677	G	Panel B		2	2					A
317	R63 L78 653	G	Panel FU								A
318	R63 R36 652	G	Panel FU		4	4					A
319	R63 N78 661	G	Panel S								A
320	R63 R36 661	G	Panel S		2	2					A
321	R63 E66 125	G	Beam M								A
322	R63 E67 125	G	Beam M		1	1					A
323	R63 N78 118	G	Fan guard		2	2					A
324	R63 A42 659	G	Front panel								A
325	R63 A43 659	G	Front panel		2	2					A
326	R61 A69 086	G	Cap		2	2					A
327	R63 A42 140	G	Fan stand								A
328	R63 A43 140	G	Fan stand		4	4					A
329	R63 A42 122	G	Nut 16		2	2					A
330	R63 N78 115	G	Propeller fan	750D	2	2					A
331	R63 Y43 221	G	Motor YC380IA	342V 33Hz	2	2					A
332	R63 E90 087	G	Screw 6x14		8	8					A
333	R63 Y87 481	G	Heat exchanger F								A
334	R63 5A3 480	G	Heat exchanger F								A
335	R63 Y88 481	G	Heat exchanger F								A
336	R63 5A4 480	G	Heat exchanger F								A
337	R63 Y89 481	G	Heat exchanger F								A
338	R63 5A5 480	G	Heat exchanger F								A
339	R63 Y90 481	G	Heat exchanger F								A
340	R63 5A9 480	G	Heat exchanger F		1						A
341	R63 Y91 481	G	Heat exchanger F								A
342	R63 6A0 480	G	Heat exchanger F			1					A
343	R63 Y02 482	G	Heat exchanger F								A
344	R63 6A0 482	G	Heat exchanger F								A
345	R63 Y02 482	G	Heat exchanger F								A

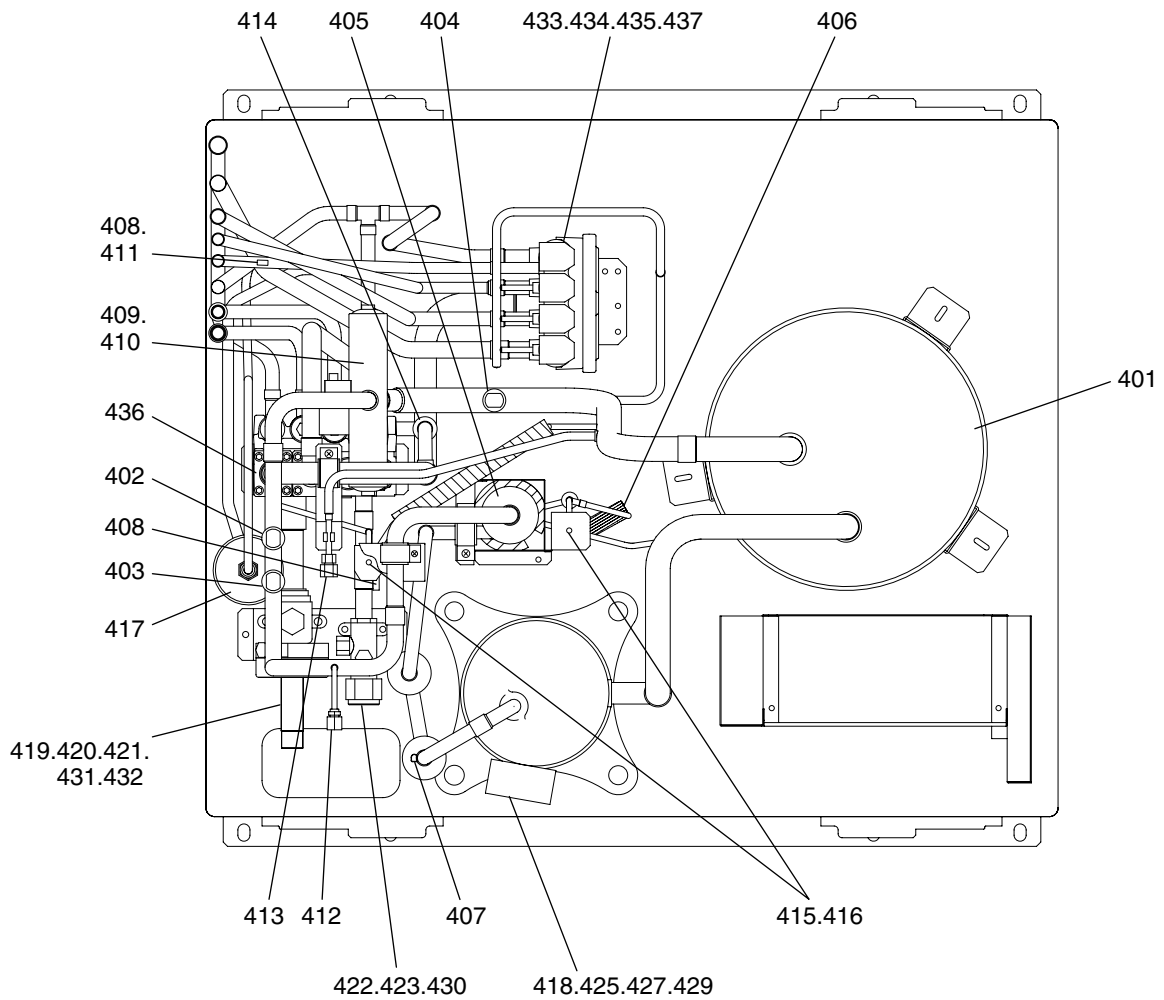
PURY-P450,P500YGM-A(-BS)  
 PURY-P550,P600YGM-A(-BS)  
 PURY-P650YGM-A(-BS)

EXTERNAL PARTS & BLOWER PARTS (3)

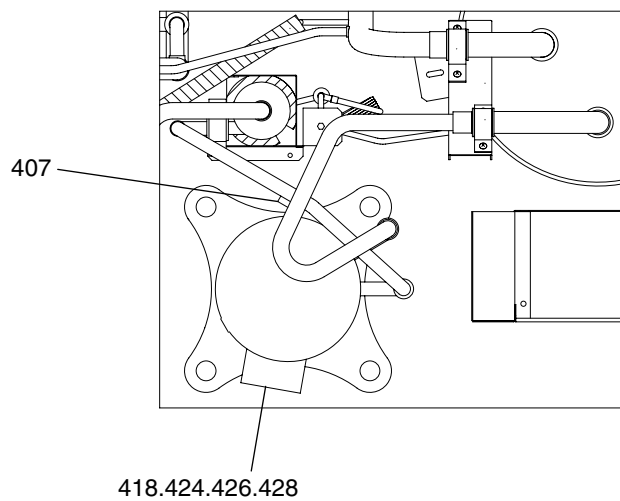
No.	Part No.	RoHS Compliant : G		Spec.	PURY-P600YGM-A-BS	PURY-P650YGM-A-BS			Dwg. No.	Price	Revision History
			Part Name								
346	R63 6A0 482	G	Heat exchanger F								A
347	R63 Y02 482	G	Heat exchanger F								A
348	R63 6A0 482	G	Heat exchanger F								A
349	R63 Y02 482	G	Heat exchanger F								A
350	R63 6A0 482	G	Heat exchanger F		1						A
351	R63 Y02 482	G	Heat exchanger F								A
352	R63 6A0 482	G	Heat exchanger F			1					A
353	R63 Y92 481	G	Heat exchanger B								A
354	R63 5A3 481	G	Heat exchanger B								A
355	R63 Y93 481	G	Heat exchanger B								A
356	R63 5A4 481	G	Heat exchanger B								A
357	R63 Y94 481	G	Heat exchanger B								A
358	R63 5A5 481	G	Heat exchanger B								A
359	R63 Y95 481	G	Heat exchanger B								A
360	R63 5A9 481	G	Heat exchanger B		2						A
361	R63 Y96 481	G	Heat exchanger B								A
362	R63 6A0 481	G	Heat exchanger B			2					A
363	R63 Y26 305	G	Control box	R-P650YGM	1	1					A

PURY-P200,P250YGM-A(-BS)  
PURY-P300,P350YGM-A(-BS)

FUNCTIONAL PARTS (1)



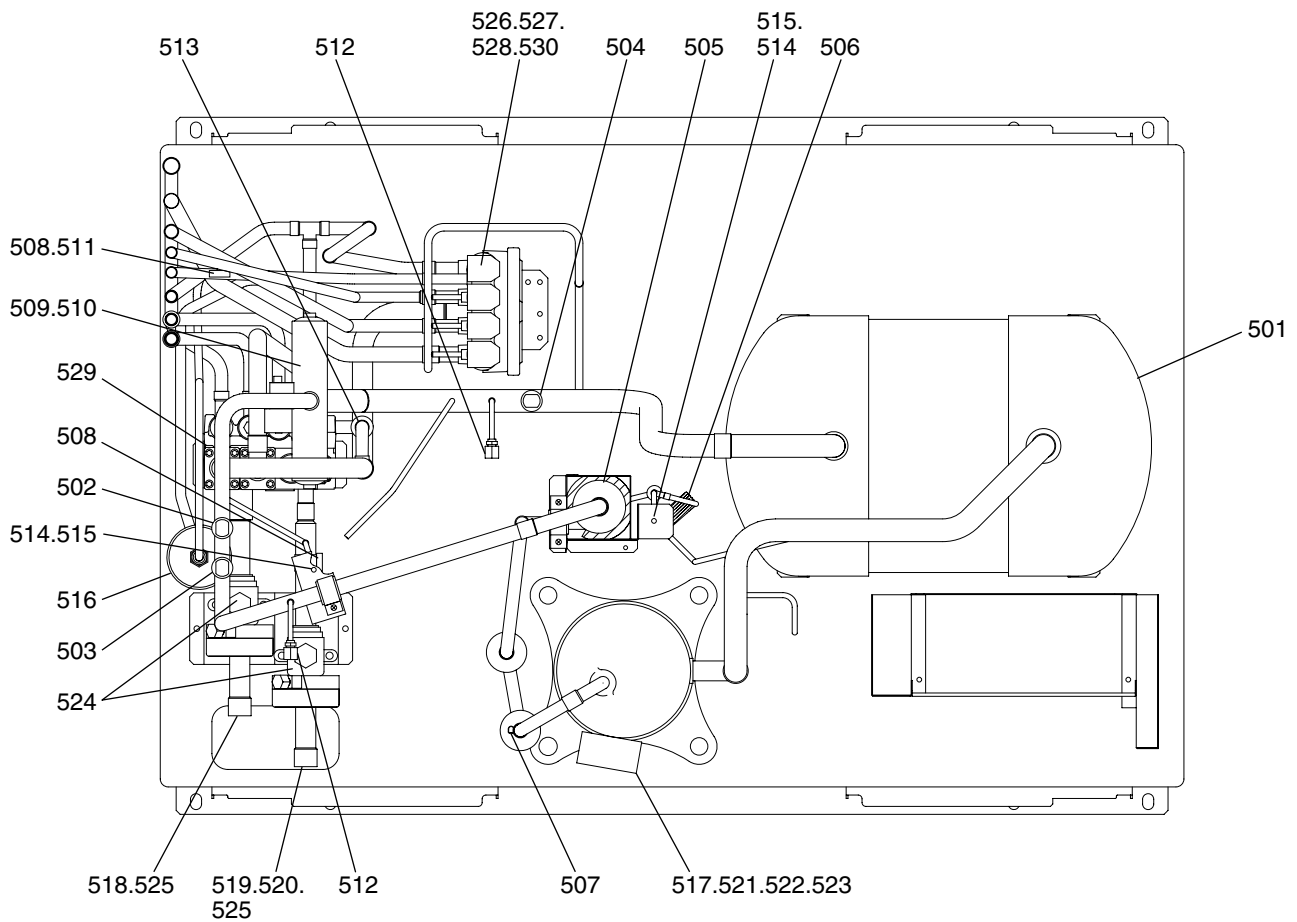
PURY-P200



No.	Part No.	RoHS Compliant : G		Spec.	PURY-P200/GM-A	PURY-P250/GM-A	PURY-P300/GM-A	PURY-P350/GM-A	Dwg. No.	Price	Revision History
			Part Name								
401	R63 Y53 484	G	Accumulator assy		1	1	1	1			A
402	R63 Y11 208	G	Pressure switch	ACB1UB28W <63H1>	1	1	1	1			A
403	R63 R34 288	G	Pressure sensor R410A	<63HS>	1	1	1	1			A
404	R63 R37 288	G	Pressure sensor R410A	<63LS>	1	1	1	1			A
405	R63 R34 487	G	Oil separator assy		1	1	1	1			A
406	R63 R34 425	G	Capillary tube assy		1	1	1	1			A
407	R63 911 202	G	Thermistor	<TH11>	1	1	1	1			A
408	R63 670 202	G	Thermistor NTH3A14	<TH5~7>	3	3	3	3			A
409	R63 Y05 154	G	Four way valve STF-07	R410A	1	1	1	1			A
410	R63 Y16 243	G	Solenoid valve coil STF DV	<21S4a>	1	1	1	1			A
411	R61 A45 287	G	Sensor cover	EVA(12.7D)	1	1	1	1			A
412	R63 R34 413	G	Check joint L R410A	VCSH2S-LM	1	1	1	1			A
413	R63 S84 413	G	Check joint R410A	VCSH2S	1	1	1	1			A
414	R63 R43 418	G	Check valve BCV-1005DY	R410A 4.15MPa CV3.5	1	1	1	1			A
415	R63 Y17 243	G	Solenoid valve coil LD 2	<SV1,SV2>	2	2	2	2			A
416	R63 R34 232	G	Solenoid valve VD1		2	2	2	2			A
417	R63 M57 405	G	Drier	DML163/4	1	1	1	1			A
418	R61 Y08 262	G	Belt heater	<CH11>	1	1	1	1			A
419	R63 0G9 441	G	Pipe assy	ID19.05	1						A
420	R63 9F2 441	G	Pipe assy	ID22.2		1	1				A
421	R63 9F2 442	G	Pipe assy	ID28.6				1			A
422	R63 R46 441	G	Pipe assy		1						A
423	R63 R34 494	G	Pipe assy			1	1	1			A
424	R66 A23 478	G	Compressor	(ANV47FFBMT)<MC>	1						A
425	R66 A44 478	G	Scroll compressor	(HNB71FA-YBE)<MC>		1	1	1			A
426	R63 R34 580	G	Insulation cover	Body	1						A
427	R63 R37 580	G	Insulation cover	Body		1	1	1			A
428	R63 R40 580	G	Insulation cover	Head	1						A
429	R63 R55 580	G	Insulation cover	Head		1	1	1			A
430	R63 R34 410	G	Ball valve VSBH-6	R410A	1	1	1	1			A
431	R63 R40 410	G	Ball valve VSMBH-8	R410A	1	1	1	1			A
432	R61 F14 514	G	Packing		1	1	1	1			A
433	R63 Y18 243	G	Solenoid valve coil	<SV4a~SV4d>	4	4	4	4			A
434	R63 6A7 235	G	Solenoid valve ACS		4	4	4	4			A
435	R63 6A7 232	G	Solenoid valve assy		1	1	1	1			A
436	R63 6A7 418	G	Check valve assy		1	1	1	1			A
437	R63 6A7 245	G	SV socket wrench		1	1	1	1			A

No.	Part No.	RoHS Compliant : G		Spec.	PURY-P200YGM-A-BS	PURY-P250YGM-A-BS	PURY-P300YGM-A-BS	PURY-P350YGM-A-BS	Dwg. No.	Price	Revision History
		Part Name									
401	R63 Y53 484	G	Accumulator assy		1	1	1	1			A
402	R63 Y11 208	G	Pressure switch	ACB1UB28W <63H1>	1	1	1	1			A
403	R63 R34 288	G	Pressure sensor R410A	<63HS>	1	1	1	1			A
404	R63 R37 288	G	Pressure sensor R410A	<63LS>	1	1	1	1			A
405	R63 R34 487	G	Oil separator assy		1	1	1	1			A
406	R63 R34 425	G	Capillary tube assy		1	1	1	1			A
407	R63 911 202	G	Thermistor	<TH11>	1	1	1	1			A
408	R63 670 202	G	Thermistor NTH3A14	<TH5~7>	3	3	3	3			A
409	R63 Y05 154	G	Four way valve STF-07	R410A	1	1	1	1			A
410	R63 Y16 243	G	Solenoid valve coil STF DV	<21S4a>	1	1	1	1			A
411	R61 A45 287	G	Sensor cover	EVA(12.7D)	1	1	1	1			A
412	R63 R34 413	G	Check joint L R410A	VCSH2S-LM	1	1	1	1			A
413	R63 S84 413	G	Check joint R410A	VCSH2S	1	1	1	1			A
414	R63 R43 418	G	Check valve BCV-1005DY	R410A 4.15MPa CV3.5	1	1	1	1			A
415	R63 Y17 243	G	Solenoid valve coil LD 2	<SV1,SV2>	2	2	2	2			A
416	R63 R34 232	G	Solenoid valve VD1		2	2	2	2			A
417	R63 M57 405	G	Drier	DML163/4	1	1	1	1			A
418	R61 Y08 262	G	Belt heater	<CH11>	1	1	1	1			A
419	R63 0G9 441	G	Pipe assy	ID19.05	1						A
420	R63 9F2 441	G	Pipe assy	ID22.2		1	1				A
421	R63 9F2 442	G	Pipe assy	ID28.6				1			A
422	R63 R46 441	G	Pipe assy		1						A
423	R63 R34 494	G	Pipe assy			1	1	1			A
424	R66 A23 478	G	Compressor	(ANV47FFBMT)<MC>	1						A
425	R66 A44 478	G	Scroll compressor	(HNB71FA-YBE)<MC>		1	1	1			A
426	R63 R34 580	G	Insulation cover	Body	1						A
427	R63 R37 580	G	Insulation cover	Body		1	1	1			A
428	R63 R40 580	G	Insulation cover	Head	1						A
429	R63 R55 580	G	Insulation cover	Head		1	1	1			A
430	R63 R34 410	G	Ball valve VSBH-6	R410A	1	1	1	1			A
431	R63 R40 410	G	Ball valve VSMBH-8	R410A	1	1	1	1			A
432	R61 F14 514	G	Packing		1	1	1	1			A
433	R63 Y18 243	G	Solenoid valve coil	<SV4a~SV4d>	4	4	4	4			A
434	R63 6A7 235	G	Solenoid valve ACS		4	4	4	4			A
435	R63 6A7 232	G	Solenoid valve assy		1	1	1	1			A
436	R63 6A7 418	G	Check valve assy		1	1	1	1			A
437	R63 6A7 245	G	SV socket wrench		1	1	1	1			A

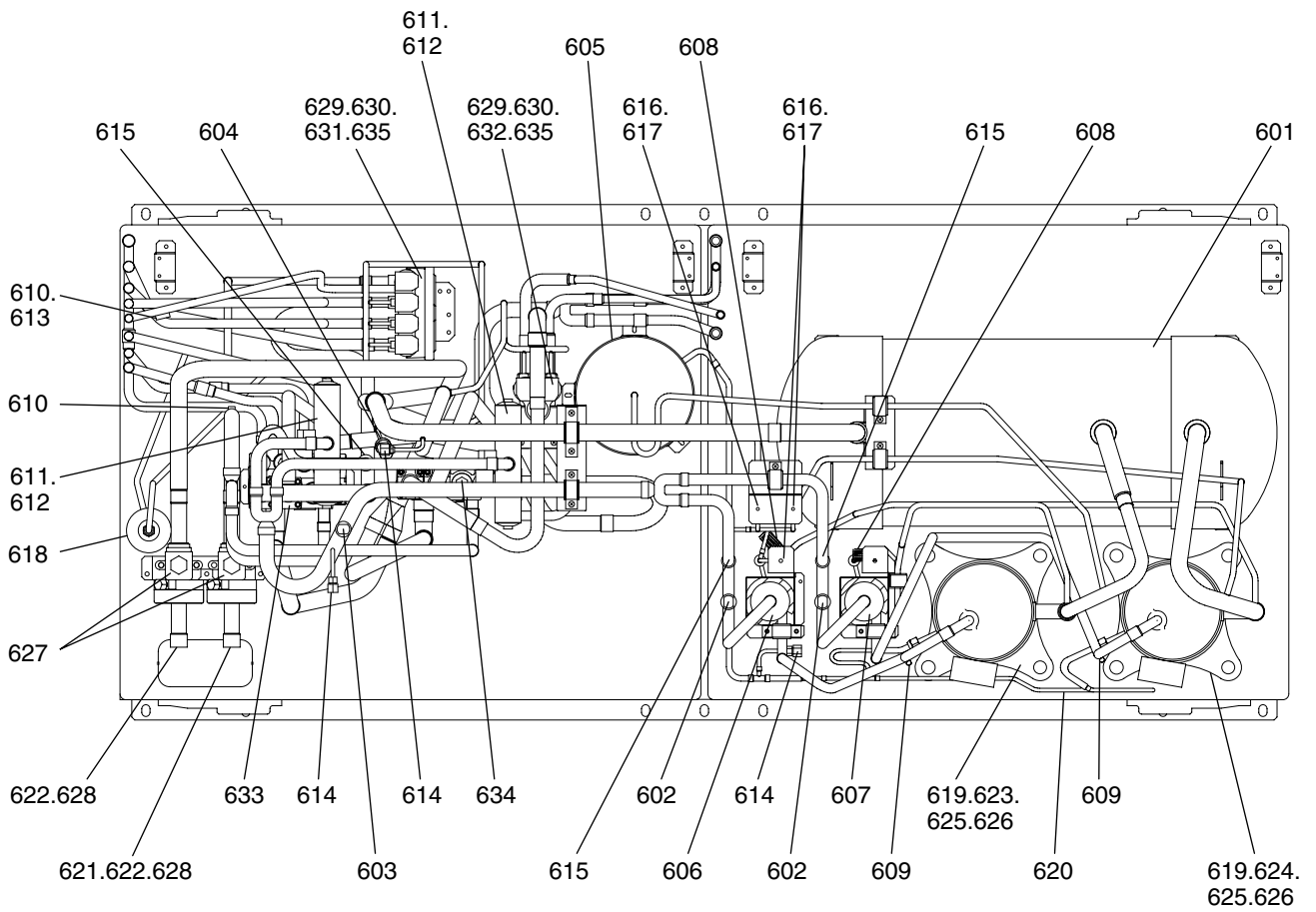




No.	Part No.	RoHS Compliant : G		Spec.	PURYP400YGM-A	PURYP400YGM-A-BS		Dwg. No.	Price	Revision History
			Part Name							
501	R63 Y54 484	G	Accumulator assy		1	1				A
502	R63 Y11 208	G	Pressure switch	ACB1UB28W <63H1>	1	1				A
503	R63 R34 288	G	Pressure sensor R410A	<63HS>	1	1				A
504	R63 R37 288	G	Pressure sensor R410A	<63LS>	1	1				A
505	R63 R55 487	G	Oil separator assy		1	1				A
506	R63 R55 425	G	Capillary tube assy		1	1				A
507	R63 911 202	G	Thermistor	<TH11>	1	1				A
508	R63 670 202	G	Thermistor NTH3A14	<TH5~7>	3	3				A
509	R63 5E7 154	G	Four way valve VT6100M	R410A	1	1				A
510	R63 Y07 242	G	Four way valve coil	<21S4a>	1	1				A
511	R61 A45 287	G	Sensor cover	EVA(12.7D)	1	1				A
512	R63 R34 413	G	Check joint L R410A	VCSH2S-LM	2	2				A
513	R63 R43 418	G	Check valve BCV-1005DY	R410A 4.15MPa CV3.5	1	1				A
514	R63 Y17 243	G	Solenoid valve coil LD2	<SV1,SV2>	2	2				A
515	R63 R34 232	G	Solenoid valve VD1		2	2				A
516	R63 M57 405	G	Drier	DML 163/4	1	1				A
517	R61 Y08 262	G	Belt heater	<CH11>	1	1				A
518	R63 9F2 442	G	Pipe assy	ID28.6	1	1				A
519	R63 9F2 441	G	Pipe assy	ID22.2	1	1				A
520	R63 7A4 494	G	Pipe assy	ID22.2(down-facing)	1	1				A
521	R66 A44 478	G	Scroll compressor	(HNB71FA-YBE)<MC>	1	1				A
522	R63 R37 580	G	Insulation cover	Body	1	1				A
523	R63 R55 580	G	Insulation cover	Head	1	1				A
524	R63 R40 410	G	Ball valve VSMBH-8	R410A	2	2				A
525	R61 F14 514	G	Packing		2	2				A
526	R63 Y18 243	G	Solenoid valve coil	<SV4a~SV4d>	4	4				A
527	R63 6A7 235	G	Solenoid valve ACS		4	4				A
528	R63 6A7 232	G	Solenoid valve assy		1	1				A
529	R63 6A7 418	G	Check valve assy		1	1				A
530	R63 6A7 245	G	SV socket wrench		1	1				A

PURY-P450,P500YGM-A(-BS)  
PURY-P550,P600YGM-A(-BS)  
PURY-P650YGM-A(-BS)

FUNCTIONAL PARTS (3)



PURY-P450,P500YGM-A(-BS)  
PURY-P550,P600YGM-A(-BS)  
PURY-P650YGM-A(-BS)

FUNCTIONAL PARTS (3)

No.	Part No.	RoHS Compliant : G		Spec.	PURY-P450YGM-A	PURY-P500YGM-A	PURY-P550YGM-A	PURY-P600YGM-A	Dwg. No.	Price	Revision History
			Part Name								
601	R63 Y05 110	G	Accumulator assy		1	1	1	1			A
602	R63 Y11 208	G	Pressure switch	ACB1UB28W <63H1,2>	2	2	2	2			A
603	R63 R34 288	G	Pressure sensor R410A	<63HS>	1	1	1	1			A
604	R63 R37 288	G	Pressure sensor R410A	<63LS>	1	1	1	1			A
605	R63 Y03 530	G	Oil tank		1	1	1	1			A
606	R63 R44 487	G	Oil separator assy 1	<O/S1>	1	1	1	1			A
607	R63 R43 487	G	Oil separator assy 2	<O/S2>	1	1	1	1			A
608	R63 R55 425	G	Capillary tube assy		2	2	2	2			A
609	R63 911 202	G	Thermistor	<TH11,12>	2	2	2	2			A
610	R63 670 202	G	Thermistor NTH3A14	<TH5~7>	3	3	3	3			A
611	R63 5E7 154	G	Four way valve VT6100M	R410A	2	2	2	2			A
612	R63 Y07 242	G	Solenoid valve coil	<21S4a,21S4b>	2	2	2	2			A
613	R61 A45 287	G	Sensor cover	EVA(12.7D)	1	1	1	1			A
614	R63 R34 413	G	Check joint L R410A	VCSH2S-LM	3	3	3	3			A
615	R63 R43 418	G	Check valve BCV-1005DY	R410A 4.15MPa CV3.5	3	3	3	3			A
616	R63 Y17 243	G	Solenoid valve coil LD2	<SV1~SV3>	3	3	3	3			A
617	R63 R34 232	G	Solenoid valve VD1		3	3	3	3			A
618	R63 N24 405	G	Drier	DML303/4	1	1	1	1			A
619	R63 Y11 237	G	Belt heater	<CH11,12>	2	2	2	2			A
620	R63 Y14 494	G	Pipe assy		1	1	1	1			A
621	R63 9F2 441	G	Pipe assy	ID22.2	1	1					A
622	R63 9F2 442	G	Pipe assy	ID28.6	1	1	2	2			A
623	R66 A26 478	G	Scroll compressor	(HNB71FA-YJ)<MC1>	1	1	1	1			A
624	R66 A25 478	G	Scroll compressor	(HN71YA-J)<MC2>	1	1	1	1			A
625	R63 R37 580	G	Insulation cover	Body	2	2	2	2			A
626	R63 R55 580	G	Insulation cover	Head	2	2	2	2			A
627	R63 R40 410	G	Ball valve VSMBH-8	R410A	2	2	2	2			A
628	R61 F14 514	G	Packing		2	2	2	2			A
629	R63 Y18 243	G	Solenoid valve coil	<SV4a~SV4d,SV5a,SV5b>	6	6	6	6			A
630	R63 6A7 235	G	Solenoid valve ACS		6	6	6	6			A
631	R63 6A7 232	G	Solenoid valve assy		1	1	1	1			A
632	R63 7A7 232	G	Solenoid valve assy		1	1	1	1			A
633	R63 6A7 418	G	Check valve assy		1	1	1	1			A
634	R63 7A7 418	G	Check valve assy		1	1	1	1			A
635	R63 6A7 245	G	SV socket wrench		1	1	1	1			A

PURY-P450,P500YGM-A(-BS)  
 PURY-P550,P600YGM-A(-BS)  
 PURY-P650YGM-A(-BS)

FUNCTIONAL PARTS (3)

No.	Part No.	RoHS Compliant : G		Spec.	PURY-P650YGM-A	PURY-P450YGM-A-BS	PURY-P500YGM-A-BS	PURY-P550YGM-A-BS	Dwg. No.	Price	Revision History
		Part Name									
601	R63 Y05 110	G	Accumulator assy		1	1	1	1			A
602	R63 Y11 208	G	Pressure switch	ACB1UB28W <63H1,2>	2	2	2	2			A
603	R63 R34 288	G	Pressure sensor R410A	<63HS>	1	1	1	1			A
604	R63 R37 288	G	Pressure sensor R410A	<63LS>	1	1	1	1			A
605	R63 Y03 530	G	Oil tank		1	1	1	1			A
606	R63 R44 487	G	Oil separator assy 1	<O/S1>	1	1	1	1			A
607	R63 R43 487	G	Oil separator assy 2	<O/S2>	1	1	1	1			A
608	R63 R55 425	G	Capillary tube assy		2	2	2	2			A
609	R63 911 202	G	Thermistor	<TH11,12>	2	2	2	2			A
610	R63 670 202	G	Thermistor NTH3A14	<TH5~7>	3	3	3	3			A
611	R63 5E7 154	G	Four way valve VT6100M	R410A	2	2	2	2			A
612	R63 Y07 242	G	Solenoid valve coil	<21S4a,21S4b>	2	2	2	2			A
613	R61 A45 287	G	Sensor cover	EVA(12.7D)	1	1	1	1			A
614	R63 R34 413	G	Check joint L R410A	VCSH2S-LM	3	3	3	3			A
615	R63 R43 418	G	Check valve BCV-1005DY	R410A 4.15MPa CV3.5	3	3	3	3			A
616	R63 Y17 243	G	Solenoid valve coil LD2	<SV1~SV3>	3	3	3	3			A
617	R63 R34 232	G	Solenoid valve VD1		3	3	3	3			A
618	R63 N24 405	G	Drier	DML303/4	1	1	1	1			A
619	R63 Y11 237	G	Belt heater	<CH11,12>	2	2	2	2			A
620	R63 Y14 494	G	Pipe assy		1	1	1	1			A
621	R63 9F2 441	G	Pipe assy	ID22.2		1	1				A
622	R63 9F2 442	G	Pipe assy	ID28.6	2	1	1	2			A
623	R66 A26 478	G	Scroll compressor	(HNB71FA-YJ)<MC1>	1	1	1	1			A
624	R66 A25 478	G	Scroll compressor	(HN71YA-J)<MC2>	1	1	1	1			A
625	R63 R37 580	G	Insulation cover	Body	2	2	2	2			A
626	R63 R55 580	G	Insulation cover	Head	2	2	2	2			A
627	R63 R40 410	G	Ball valve VSMBH-8	R410A	2	2	2	2			A
628	R61 F14 514	G	Packing		2	2	2	2			A
629	R63 Y18 243	G	Solenoid valve coil	<SV4a~SV4d,SV5a,SV5b>	6	6	6	6			A
630	R63 6A7 235	G	Solenoid valve ACS		6	6	6	6			A
631	R63 6A7 232	G	Solenoid valve assy		1	1	1	1			A
632	R63 7A7 232	G	Solenoid valve assy		1	1	1	1			A
633	R63 6A7 418	G	Check valve assy		1	1	1	1			A
634	R63 7A7 418	G	Check valve assy		1	1	1	1			A
635	R63 6A7 245	G	SV socket wrench		1	1	1	1			A

PURY-P450,P500YGM-A(-BS)  
PURY-P550,P600YGM-A(-BS)  
PURY-P650YGM-A(-BS)

FUNCTIONAL PARTS (3)

No.	Part No.	RoHS Compliant : G		Spec.	PURY-P600YGM-A-BS	PURY-P650YGM-A-BS			Dwg. No.	Price	Revision History
		Part Name									
601	R63 Y05 110	G	Accumulator assy		1	1					A
602	R63 Y11 208	G	Pressure switch	ACB1UB28W <63H1,2>	2	2					A
603	R63 R34 288	G	Pressure sensor R410A	<63HS>	1	1					A
604	R63 R37 288	G	Pressure sensor R410A	<63LS>	1	1					A
605	R63 Y03 530	G	Oil tank		1	1					A
606	R63 R44 487	G	Oil separator assy 1	<O/S1>	1	1					A
607	R63 R43 487	G	Oil separator assy 2	<O/S2>	1	1					A
608	R63 R55 425	G	Capillary tube assy		2	2					A
609	R63 911 202	G	Thermistor	<TH11,12>	2	2					A
610	R63 670 202	G	Thermistor NTH3A14	<TH5~7>	3	3					A
611	R63 5E7 154	G	Four way valve VT6100M	R410A	2	2					A
612	R63 Y07 242	G	Solenoid valve coil	<21S4a,21S4b>	2	2					A
613	R61 A45 287	G	Sensor cover	EVA(12.7D)	1	1					A
614	R63 R34 413	G	Check joint L R410A	VCSH2S-LM	3	3					A
615	R63 R43 418	G	Check valve BCV-1005DY	R410A 4.15MPa CV3.5	3	3					A
616	R63 Y17 243	G	Solenoid valve coil LD2	<SV1~SV3>	3	3					A
617	R63 R34 232	G	Solenoid valve VD1		3	3					A
618	R63 N24 405	G	Drier	DML303/4	1	1					A
619	R63 Y11 237	G	Belt heater	<CH11,12>	2	2					A
620	R63 Y14 494	G	Pipe assy		1	1					A
621	R63 9F2 441	G	Pipe assy	ID22.2							A
622	R63 9F2 442	G	Pipe assy	ID28.6	2	2					A
623	R66 A26 478	G	Scroll compressor	(HNB71FA-YJ)<MC1>	1	1					A
624	R66 A25 478	G	Scroll compressor	(HN71YA-J)<MC2>	1	1					A
625	R63 R37 580	G	Insulation cover	Body	2	2					A
626	R63 R55 580	G	Insulation cover	Head	2	2					A
627	R63 R40 410	G	Ball valve VSMBH-8	R410A	2	2					A
628	R61 F14 514	G	Packing		2	2					A
629	R63 Y18 243	G	Solenoid valve coil	<SV4a~SV4d,SV5a,SV5b>	6	6					A
630	R63 6A7 235	G	Solenoid valve ACS		6	6					A
631	R63 6A7 232	G	Solenoid valve assy		1	1					A
632	R63 7A7 232	G	Solenoid valve assy		1	1					A
633	R63 6A7 418	G	Check valve assy		1	1					A
634	R63 7A7 418	G	Check valve assy		1	1					A
635	R63 6A7 245	G	SV socket wrench		1	1					A

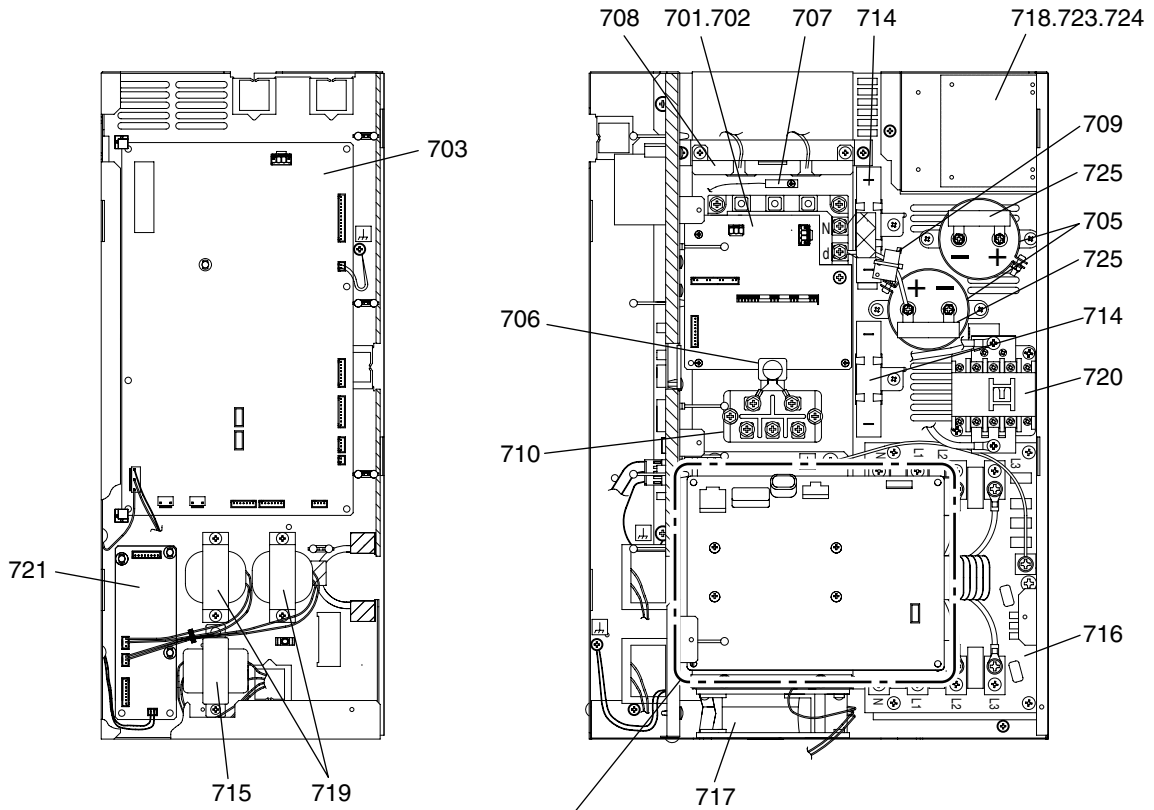
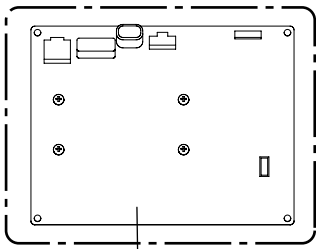


Fig.A

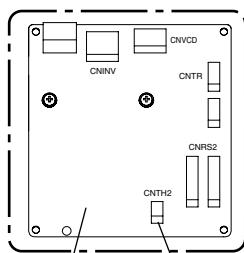
Fig.A

- Production number 5ZW\*\*\*\*\* and before



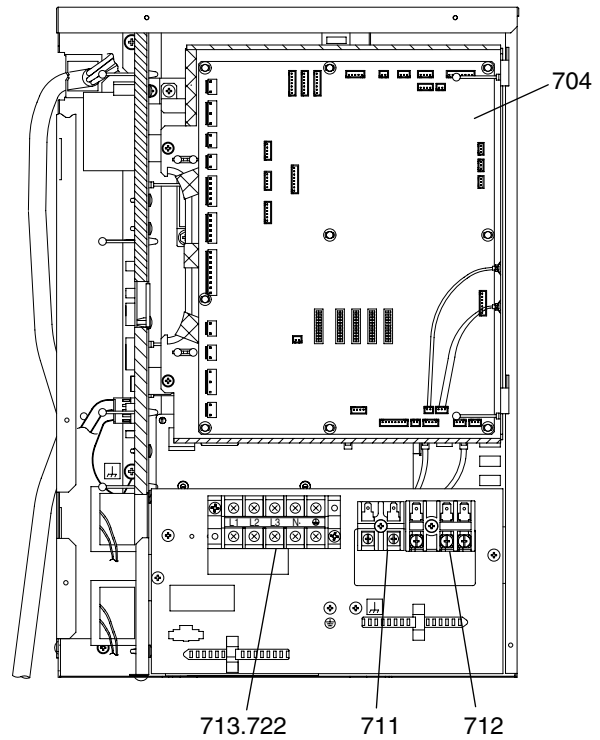
726

- Production number 51W\*\*\*\*\* and later  
 (RoHS-compliant outdoor unit)



727

728



713.722

711

712

No.	Part No.	RoHS Compliant : G		Spec.	PURY-P200YGM-A	PURY-P250YGM-A	PURY-P300YGM-A	PURY-P350YGM-A	Dwg. No.	Price	Revision History
			Part Name								
701	R63 Y04 249	G	IPM (Power module)	6MBP50RA120	1	1	1	1			A
702	R63 Y43 280	G	G/A board		1	1	1	1			A
703	R63 Y25 321	G	INV board		1	1	1	1			A
704	R63 Y49 281	G	Main board		1	1	1	1			A
705	R63 R34 252	G	Capacitor	400V 3300μF<C11,C12>	2	2	2	2			A
706	R63 L85 252	G	Capacitor assy	<ZNR14>	1	1	1	1			A
707	R63 F14 201	G	Thermistor	<THHS>	1	1	1	1			A
708	R63 Y02 287	G	AC current sensor	CHJ038CP2B<AC-CT>	1	1	1	1			A
709	R63 A42 289	G	DC current sensor	<DC-CT>		1	1	1			A
710	R63 Y12 320	G	Diode	DF60LB160<DS1>	1	1	1	1			A
711	R63 435 246	G	Terminal block	<TB3>	1	1	1	1			A
712	R63 979 247	G	Terminal block	<TB7>	1	1	1	1			A
713	R63 Y05 246	G	Terminal block	<TB1>	1	1	1	1			A
714	R63 Y06 234	G	Resistor	40W, 47Ω<R11,R12>	2	2	2	2			A
715	R63 Y25 260	G	Transformer	230V/20.1V<T01>	1	1	1	1			A
716	R63 Y11 293	G	Noise filter	CF4032C-MX2<ACNF1>	1	1	1	1			A
717	R63 Y15 118	G	Fan	109S025UL<MF1>	1	1	1	1			A
718	R63 Y02 259	G	Reactor	<DCL1>	1						A
719	R63 R40 259	G	Choke coil	10mH 2A<L1,L2>	2	2	2	2			A
720	R63 Y28 225	G	Magnet contactor	PAK-21J,AC240V<52C1>	1	1	1	1			A
721	R63 Y26 321	G	Filter board		1	1	1	1			A
722	R63 Y06 246	G	Terminal block	<TB1>							A
723	R63 Y03 259	G	Reactor	<DCL1>		1	1	1			A
724	R63 Y04 259	G	Reactor	<DCL1>							A
725	R63 Y04 234	G	Resistor	<R13,R14>	2	2	2	2			A
★	726	R63 Y24 321	G	Fan INV board	1	1	1	1			A
★	727	R63 Y74 281	G	Fan INV board-A	1	1	1	1			A
	728	R63 R49 200	G	Thermistor	1	1	1	1			A

★ RoHS-compliant outdoor units (production number 51W\*\*\*\*\* and later) use Fan INV board No. 727.  
 Fan INV boards No. 726 and No. 727 are not interchangeable.  
 If RoHS-compliance status information of a given unit (production number) is not available, procure Fan INV boards No. 726 and No. 727.



No.	Part No.	RoHS Compliant : G		Spec.	PURY-P400YGM-A	PURY-P200YGM-A-BS	PURY-P250YGM-A-BS	PURY-P300YGM-A-BS	Dwg. No.	Price	Revision History
		Part Name									
701	R63 Y04 249	G	IPM (Power module)	6MBP50RA120	1	1	1	1			A
702	R63 Y43 280	G	G/A board		1	1	1	1			A
703	R63 Y25 321	G	INV board		1	1	1	1			A
704	R63 Y49 281	G	Main board		1	1	1	1			A
705	R63 R34 252	G	Capacitor	400V 3300μF<C11,C12>	2	2	2	2			A
706	R63 L85 252	G	Capacitor assy	<ZNR14>	1	1	1	1			A
707	R63 F14 201	G	Thermistor	<THHS>	1	1	1	1			A
708	R63 Y02 287	G	AC current sensor	CHJ038CP2B<AC-CT>	1	1	1	1			A
709	R63 A42 289	G	DC current sensor	<DC-CT>	1		1	1			A
710	R63 Y12 320	G	Diode	DF60LB160<DS1>	1	1	1	1			A
711	R63 435 246	G	Terminal block	<TB3>	1	1	1	1			A
712	R63 979 247	G	Terminal block	<TB7>	1	1	1	1			A
713	R63 Y05 246	G	Terminal block	<TB1>		1	1	1			A
714	R63 Y06 234	G	Resistor	40W, 47Ω<R11,R12>	2	2	2	2			A
715	R63 Y25 260	G	Transformer	230V/20.1V<T01>	1	1	1	1			A
716	R63 Y11 293	G	Noise filter	CF4032C-MX2<ACNF1>	1	1	1	1			A
717	R63 Y15 118	G	Fan	109S025UL<MF1>	1	1	1	1			A
718	R63 Y02 259	G	Reactor	<DCL1>		1					A
719	R63 R40 259	G	Choke coil	10mH 2A<L1,L2>	2	2	2	2			A
720	R63 Y28 225	G	Magnet contactor	PAK-21J,AC240V<52C1>	1	1	1	1			A
721	R63 Y26 321	G	Filter board		1	1	1	1			A
722	R63 Y06 246	G	Terminal block	<TB1>	1						A
723	R63 Y03 259	G	Reactor	<DCL1>			1	1			A
724	R63 Y04 259	G	Reactor	<DCL1>	1						A
725	R63 Y04 234	G	Resistor	<R13,R14>	2	2	2	2			A
★	726	R63 Y24 321	G	Fan INV board	1	1	1	1			A
★	727	R63 Y74 281	G	Fan INV board-A	1	1	1	1			A
	728	R63 R49 200	G	Thermistor	1	1	1	1			A

★ RoHS-compliant outdoor units (production number 51W\*\*\*\*\* and later) use Fan INV board No. 727.  
 Fan INV boards No. 726 and No. 727 are not interchangeable.  
 If RoHS-compliance status information of a given unit (production number) is not available, procure Fan INV boards No. 726 and No. 727.

No.	Part No.	RoHS Compliant : G		Spec.	PURY-P350YGM-A-BS	PURY-P400YGM-A-BS			Dwg. No.	Price	Revision History
			Part Name								
701	R63 Y04 249	G	IPM (Power module)	6MBP50RA120	1	1					A
702	R63 Y43 280	G	G/A board		1	1					A
703	R63 Y25 321	G	INV board		1	1					A
704	R63 Y49 281	G	Main board		1	1					A
705	R63 R34 252	G	Capacitor	400V 3300μF<C11,C12>	2	2					A
706	R63 L85 252	G	Capacitor assy	<ZNR14>	1	1					A
707	R63 F14 201	G	Thermistor	<THHS>	1	1					A
708	R63 Y02 287	G	AC current sensor	CHJ038CP2B<AC-CT>	1	1					A
709	R63 A42 289	G	DC current sensor	<DC-CT>	1	1					A
710	R63 Y12 320	G	Diode	DF60LB160<DS1>	1	1					A
711	R63 435 246	G	Terminal block	<TB3>	1	1					A
712	R63 979 247	G	Terminal block	<TB7>	1	1					A
713	R63 Y05 246	G	Terminal block	<TB1>	1						A
714	R63 Y06 234	G	Resistor	40W, 47Ω<R11,R12>	2	2					A
715	R63 Y25 260	G	Transformer	230V/20.1V<T01>	1	1					A
716	R63 Y11 293	G	Noise filter	CF4032C-MX2<ACNF1>	1	1					A
717	R63 Y15 118	G	Fan	109S025UL<MF1>	1	1					A
718	R63 Y02 259	G	Reactor	<DCL1>							A
719	R63 R40 259	G	Choke coil	10mH 2A<L1,L2>	2	2					A
720	R63 Y28 225	G	Magnet contactor	PAK-21J,AC240V<52C1>	1	1					A
721	R63 Y26 321	G	Filter board		1	1					A
722	R63 Y06 246	G	Terminal block	<TB1>		1					A
723	R63 Y03 259	G	Reactor	<DCL1>	1						A
724	R63 Y04 259	G	Reactor	<DCL1>		1					A
725	R63 Y04 234	G	Resistor	<R13,R14>	2	2					A
★	726	R63 Y24 321	G	Fan INV board	1	1					A
★	727	R63 Y74 281	G	Fan INV board-A	1	1					A
	728	R63 R49 200	G	Thermistor	1	1					A

★ RoHS-compliant outdoor units (production number 51W\*\*\*\*\* and later) use Fan INV board No. 727.  
Fan INV boards No. 726 and No. 727 are not interchangeable.  
If RoHS-compliance status information of a given unit (production number) is not available, procure Fan INV boards No. 726 and No. 727.

PURY-P450,P500YGM-A(-BS)  
 PURY-P550,P600YGM-A(-BS)  
 PURY-P650YGM-A(-BS)

CONTROL BOX PARTS (2)

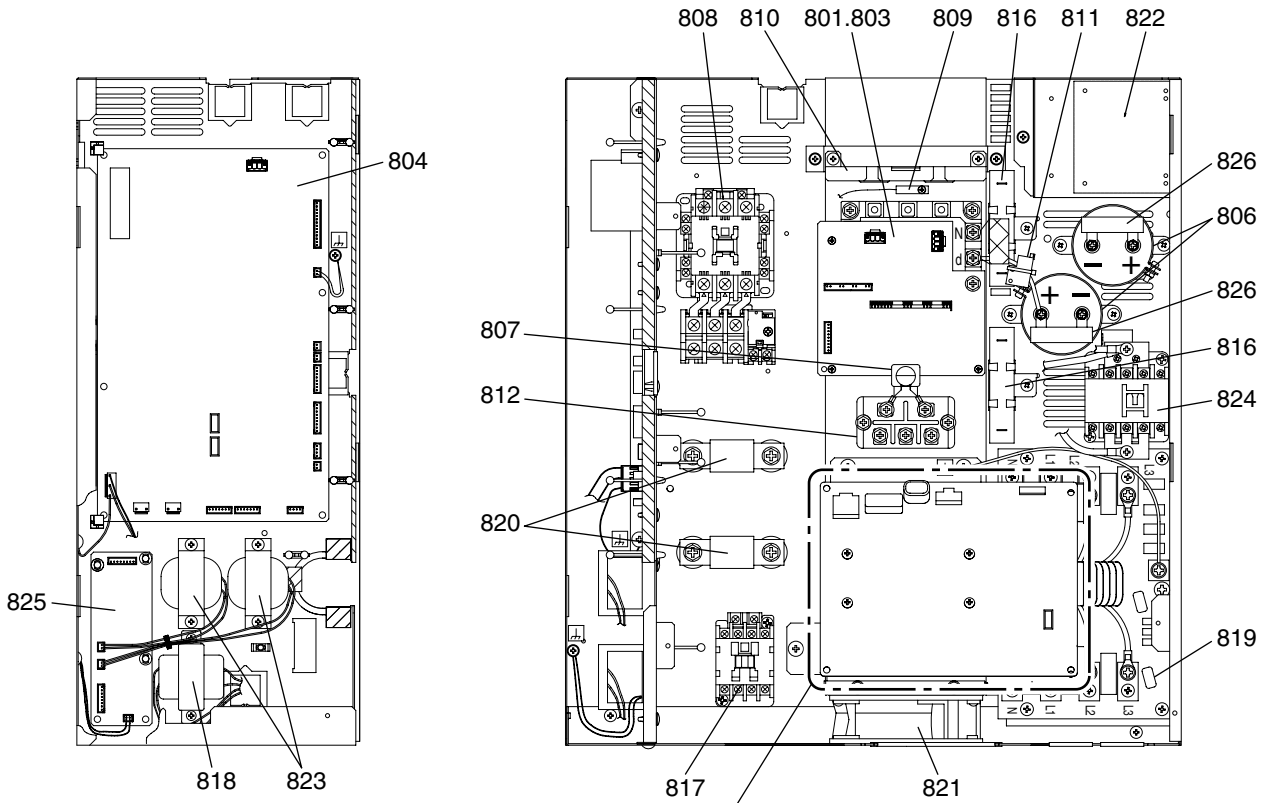
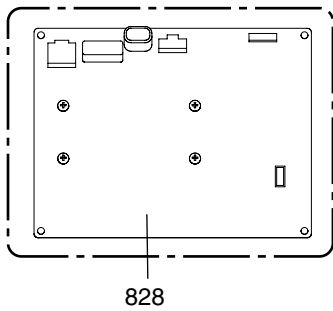


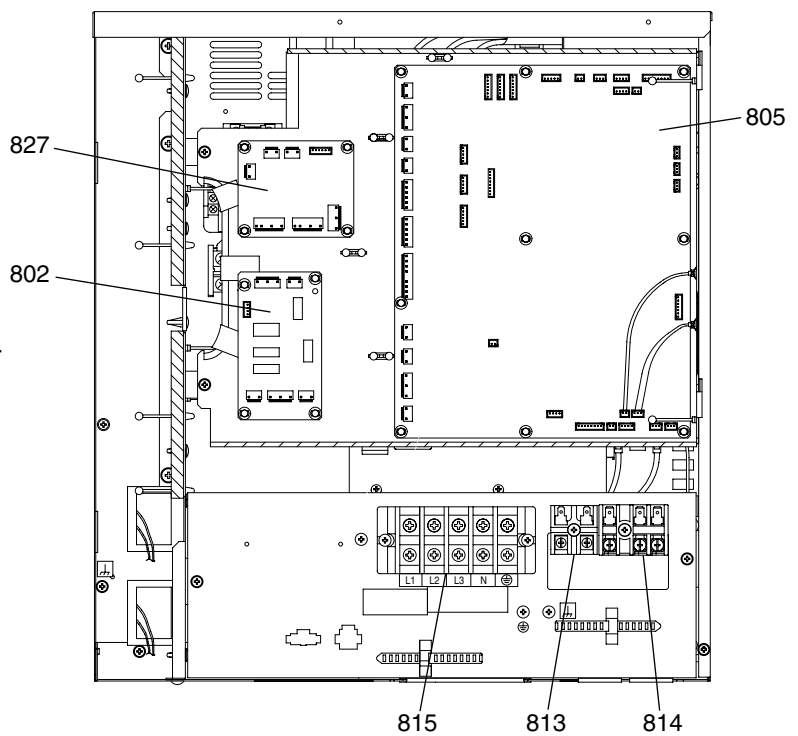
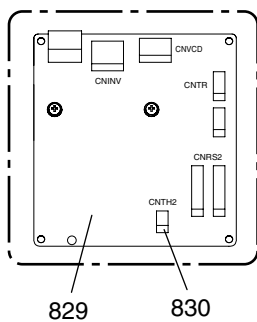
Fig.B

Fig.B

• Production number 5ZW\*\*\*\* and before



• Production number 51W\*\*\*\* and later  
 (RoHS-compliant outdoor unit)



PURY-P450,P500YGM-A(-BS)  
 PURY-P550,P600YGM-A(-BS)  
 PURY-P650YGM-A(-BS)

CONTROL BOX PARTS (2)

No.	Part No.	RoHS Compliant : G		Spec.	PURY-P450YGM-A	PURY-P500YGM-A	PURY-P550YGM-A	PURY-P600YGM-A	Dwg. No.	Price	Revision History
			Part Name								
801	R63 Y04 249	G	IPM (Power module)	6MBP50RA120	1	1	1	1			A
802	R63 Y60 280	G	Relay board		1	1	1	1			A
803	R63 Y43 280	G	G/A board		1	1	1	1			A
804	R63 Y25 321	G	INV board		1	1	1	1			A
805	R63 Y50 281	G	Main board		1	1	1	1			A
806	R63 R34 252	G	Capacitor	400V 3300µF<C11,C12>	2	2	2	2			A
807	R63 L85 252	G	Capacitor assy	<ZNR14>	1	1	1	1			A
808	R63 Y36 225	G	Magnetic starter	PAK-35JT-FC<51C2,52C2>	1	1	1	1			A
809	R63 F14 201	G	Thermistor	<THHS>	1	1	1	1			A
810	R63 Y02 287	G	AC current sensor	CHJ038CP2B<AC-CT>	1	1	1	1			A
811	R63 A42 289	G	DC current sensor	<DC-CT>	1	1	1	1			A
812	R63 Y12 320	G	Diode	DF60LB160<DS1>	1	1	1	1			A
813	R63 435 246	G	Terminal block	<TB3>	1	1	1	1			A
814	R63 979 247	G	Terminal block	<TB7>	1	1	1	1			A
815	R63 Y06 246	G	Terminal block	<TB1>	1	1	1	1			A
816	R63 Y06 234	G	Resistor	40W, 47Ω<R11,R12>	2	2	2	2			A
817	R63 Y29 225	G	Magnet contactor	PAK-11J<52F>	1	1	1	1			A
818	R63 Y25 260	G	Transformer	230V/20.1V	1	1	1	1			A
819	R63 Y11 293	G	Noise filter	CF4032C-MX2<ACNF1>	1	1	1	1			A
820	R63 Y09 241	G	Fuse	<F11,F12>	2	2	2	2			A
821	R63 Y15 118	G	Fan	109S025UL<MF1>	1	1	1	1			A
822	R63 Y04 259	G	Reactor	<DCL1>	1	1	1	1			A
823	R63 R40 259	G	Choke coil	10mH 2A<L1,L2>	2	2	2	2			A
824	R63 Y28 225	G	Magnet contactor	PAK-21J,AC240V<52C1>	1	1	1	1			A
825	R63 Y26 321	G	Filter board		1	1	1	1			A
826	R63 Y04 234	G	Resistor	<R13,R14>	2	2	2	2			A
827	R63 Y48 281	G	Relay board		1	1	1	1			A
★ 828	R63 Y24 321	G	Fan INV board		1	1	1	1			A
★ 829	R63 Y74 281	G	Fan INV board-A		1	1	1	1			A
830	R63 R49 200	G	Thermistor	<THHS5>	1	1	1	1			A

★ RoHS-compliant outdoor units (production number 51W\*\*\*\*\* and later) use Fan INV board No. 829.  
 Fan INV boards No. 828 and No. 829 are not interchangeable.  
 If RoHS-compliance status information of a given unit (production number) is not available, procure Fan INV boards No. 828 and No. 829.

No.	Part No.	RoHS Compliant : G		Spec.	PURY-P650YGM-A	PURY-P450YGM-A-BS	PURY-P500YGM-A-BS	PURY-P550YGM-A-BS	Dwg. No.	Price	Revision History
			Part Name								
801	R63 Y04 249	G	IPM (Power module)	6MBP50RA120	1	1	1	1			A
802	R63 Y60 280	G	Relay board		1	1	1	1			A
803	R63 Y43 280	G	G/A board		1	1	1	1			A
804	R63 Y25 321	G	INV board		1	1	1	1			A
805	R63 Y50 281	G	Main board		1	1	1	1			A
806	R63 R34 252	G	Capacitor	400V 3300μF<C11,C12>	2	2	2	2			A
807	R63 L85 252	G	Capacitor assy	<ZNR14>	1	1	1	1			A
808	R63 Y36 225	G	Magnetic starter	PAK-35JT-FC<51C2,52C2>	1	1	1	1			A
809	R63 F14 201	G	Thermistor	<THHS>	1	1	1	1			A
810	R63 Y02 287	G	AC current sensor	CHJ038CP2B<AC-CT>	1	1	1	1			A
811	R63 A42 289	G	DC current sensor	<DC-CT>	1	1	1	1			A
812	R63 Y12 320	G	Diode	DF60LB160<DS1>	1	1	1	1			A
813	R63 435 246	G	Terminal block	<TB3>	1	1	1	1			A
814	R63 979 247	G	Terminal block	<TB7>	1	1	1	1			A
815	R63 Y06 246	G	Terminal block	<TB1>	1	1	1	1			A
816	R63 Y06 234	G	Resistor	40W, 47Ω<R11,R12>	2	2	2	2			A
817	R63 Y29 225	G	Magnet contactor	PAK-11J<52F>	1	1	1	1			A
818	R63 Y25 260	G	Transformer	230V/20.1V	1	1	1	1			A
819	R63 Y11 293	G	Noise filter	CF4032C-MX2<ACNF1>	1	1	1	1			A
820	R63 Y09 241	G	Fuse	<F11,F12>	2	2	2	2			A
821	R63 Y15 118	G	Fan	109S025UL<MF1>	1	1	1	1			A
822	R63 Y04 259	G	Reactor	<DCL1>	1	1	1	1			A
823	R63 R40 259	G	Choke coil	10mH 2A<L1,L2>	2	2	2	2			A
824	R63 Y28 225	G	Magnet contactor	PAK-21J,AC240V<52C1>	1	1	1	1			A
825	R63 Y26 321	G	Filter board		1	1	1	1			A
826	R63 Y04 234	G	Resistor	<R13,R14>	2	2	2	2			A
827	R63 Y48 281	G	Relay board		1	1	1	1			A
★	828	R63 Y24 321	G	Fan INV board	1	1	1	1			A
★	829	R63 Y74 281	G	Fan INV board-A	1	1	1	1			A
	830	R63 R49 200	G	Thermistor	<THHS5>	1	1	1	1		A

★ RoHS-compliant outdoor units (production number 51W\*\*\*\*\* and later) use Fan INV board No. 829.  
Fan INV boards No. 828 and No. 829 are not interchangeable.  
If RoHS-compliance status information of a given unit (production number) is not available, procure Fan INV boards No. 828 and No. 829.



