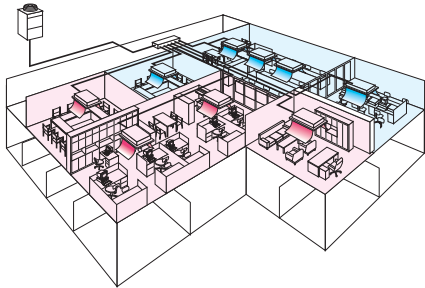


R2 Series High COP (8-20hp)

Simultaneous Heating and Cooling with Heat Recovery Outdoor Unit



Improved for even higher efficiency

Throughout the year, many buildings require cooling in some areas and heating in others - even in adjacent rooms. The outstanding City Multi R2 system meets this requirement by distributing surplus heat from cooling operations (and vice versa) to rooms where it is needed. This efficiency can result in energy savings of up to 30% over conventional systems.

Key Features

- Easy to install unique 2-pipe technology means minimal disruption, quicker installation and less connections than 3 pipe equivalents
- Designed from day 1 for seasonal efficiency – up to 27% more efficient than the 2010 equivalent
- Flat tube aluminium micro-channel heat exchanger protected with a sacrificial zinc coating - a world's first in VRF providing higher heat transfer, improved efficiency and reduced weight, size and refrigerant volume
- New energy-saving inverter driven outdoor compressor with very low start currents
- Improved flow distribution of the refrigerant circuit and redesigned bellmouth grille to minimise power input
- Reduced standby power by up to 50% using induction heated compressor
- Automated dynamic control of refrigerant evaporating temperature based on internal load, provides added comfort whilst improving seasonal efficiency by 8%
- Increase and fix system evaporating temperature to enable increased indoor unit SHF, air off temperature conditions and therefore efficiency and comfort
- Compact chassis for easier installation - no requirement for plant rooms or bulky service shafts
- The choice to either provide standard reverse defrost or can continue to provide indoor units heat during the defrost cycle by utilising hot gas defrost technology

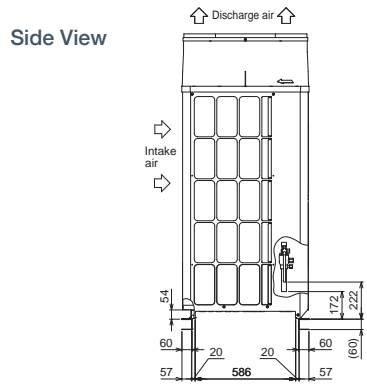


OUTDOOR UNITS		PURY-EP200YLM-A	PURY-EP250YLM-A	PURY-EP300YLM-A	PURY-EP350YLM-A	PURY-EP400YLM-A	PURY-EP450YLM-A	PURY-EP500YLM-A
CAPACITY (kW)	Heating (nominal)	25.0	31.5	37.5	45.0	50.0	56.0	63.0
	Cooling (nominal)	22.4	28.0	33.5	40.0	45.0	50.0	56.0
	High Performance Heating (UK)	25.0	31.5	35.6	42.8	47.5	50.7	57.0
	COP Priority Heating (UK)	22.8	28.7	32.3	38.7	43.0	48.7	54.8
	Cooling (UK)	20.0	25.0	29.8	35.6	40.1	44.4	49.7
POWER INPUT (kW)	Heating (nominal)	6.41	8.45	9.97	12.93	13.40	15.86	19.54
	Cooling (nominal)	5.48	7.25	9.20	12.57	12.56	14.83	18.30
	High Performance Heating (UK)	8.03	10.58	13.30	17.25	17.88	18.10	22.30
	COP Priority Heating (UK)	6.37	8.40	9.68	12.56	13.01	14.50	17.86
	Cooling (UK)	2.42	3.11	4.63	5.94	6.17	6.94	7.85
COP / EER (nominal)	3.90 / 4.08	3.72 / 3.86	3.76 / 3.74	3.48 / 3.18	3.73 / 3.58	3.53 / 3.37	3.22 / 3.06	
SCOP / SEER (system)	5.06 / 8.21	5.36 / 8.20	5.41 / 6.79	5.38 / 6.56	4.59 / 6.85	4.93 / 7.05	4.97 / 6.79	
MAX No. OF CONNECTABLE INDOOR UNITS		20	25	30	35	40	45	50
MAX CONNECTABLE CAPACITY		50-150% OU Capacity	50-150% OU Capacity	50-150% OU Capacity	50-150% OU Capacity	50-150% OU Capacity	50-150% OU Capacity	50-150% OU Capacity
AIRFLOW (m ³ /min)	High	185	185	230	230	320	320	380
PIPE SIZE mm (in)	Gas	15.88 (5/8")	19.05 (3/4")	19.05 (3/4")	19.05 (3/4")	22.2 (7/8")	22.2 (7/8")	22.2 (7/8")
	Liquid	19.05 (3/4")	22.2 (7/8")	22.2 (7/8")	28.58 (1-1/8")	28.58 (1-1/8")	28.58 (1-1/8")	28.58 (1-1/8")
SOUND PRESSURE LEVEL (dBA)		59	60	62.5	62.5	62.5	62.5	63.5
SOUND POWER LEVEL (dBA)		82.5	83.5	86	86	86	86	87
WEIGHT (kg)		218	218	260	260	338	338	351
DIMENSIONS (mm)	Width	920	920	1220	1220	1750	1750	1750
	Depth	740	740	740	740	740	740	740
	Height (1650mm without legs)	1710	1710	1710	1710	1710	1710	1710
ELECTRICAL SUPPLY *		380-415v, 50Hz	380-415v, 50Hz	380-415v, 50Hz	380-415v, 50Hz	380-415v, 50Hz	380-415v, 50Hz	380-415v, 50Hz
PHASE*		Three	Three	Three	Three	Three	Three	Three
STARTING CURRENT (A)*		8	8	8	8	8 / 8	8 / 8	8 / 8
NOMINAL SYSTEM RUNNING CURRENT (A)* Heating/Cooling [MAX]		9.9 / 8.4 [16.1]	13.0 / 11.2 [19.9]	15.4 / 14.2 [23.6]	19.9 / 19.4 [30.6]	20.7 / 19.4 [31.7]	24.5 / 22.9 [37.4]	30.2 / 28.2 [46.1]
GUARANTEED OPERATING RANGE (°C) Heating / Cooling		-20-15.5 / -5-46	-20-15.5 / -5-46	-20-15.5 / -5-46	-20-15.5 / -5-46	-20-15.5 / -5-46	-20-15.5 / -5-46	-20-15.5 / -5-46
FUSE RATING (MCB sizes BS EN 60947-2) - (A)*		1 x 20	1 x 20	1 x 25	1 x 32	1 x 32	1 x 40	1 x 50
MAINS CABLE No. Cores*		4	4	4	4	4	4	4

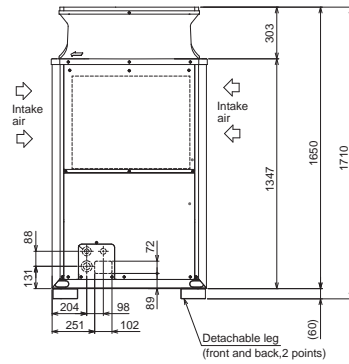
Note: * A separate power supply is required for each module. Where more than one figure is quoted there are multiple modules. Price includes Twinning Kit where necessary.

Product Dimensions

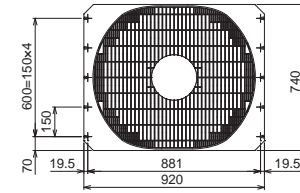
PURY-EP200/250YLM-A



Front View

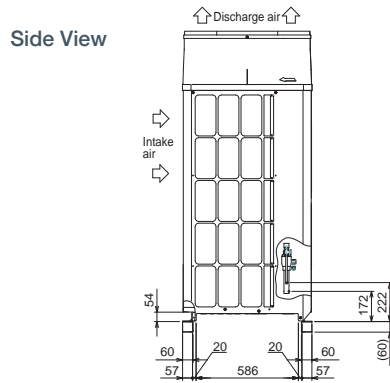


Upper View

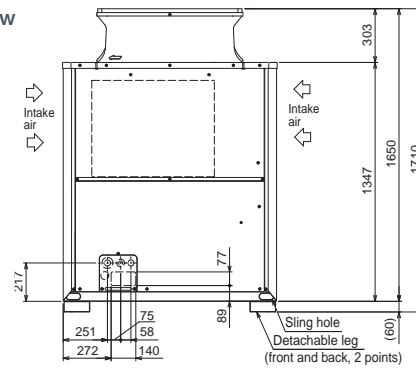


Product Dimensions

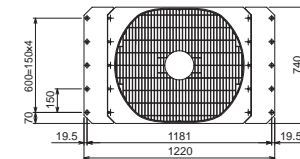
PURY-EP300/350YLM-A



Front View

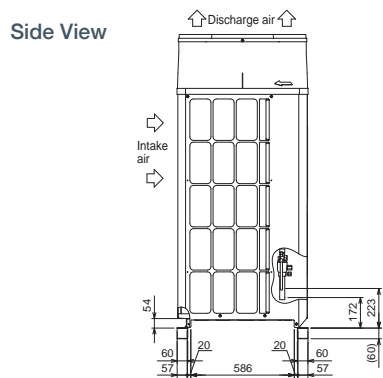


Upper View

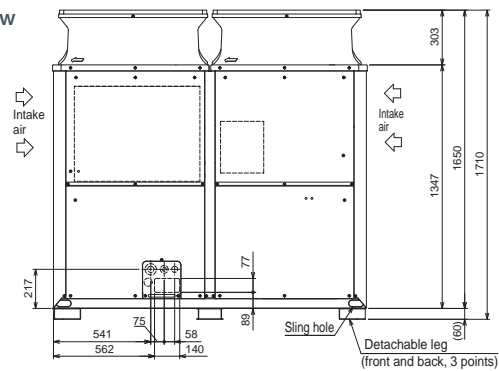


Product Dimensions

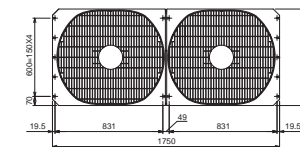
PURY-EP400/450/500YLM-A



Front View

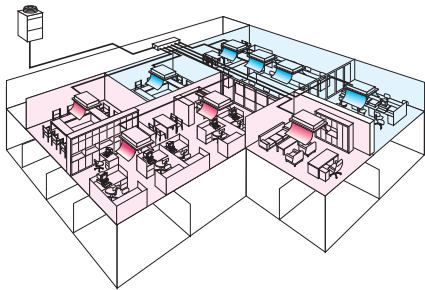


Upper View



R2 Series High COP (22-28hp)

Simultaneous Heating and Cooling with Heat Recovery Outdoor Unit



Improved for even higher efficiency

Throughout the year, many buildings require cooling in some areas and heating in others - even in adjacent rooms. The outstanding City Multi R2 system meets this requirement by distributing surplus heat from cooling operations (and vice versa) to rooms where it is needed. This efficiency can result in energy savings of up to 30% over conventional systems.

Key Features

- Easy to install unique 2-pipe technology means minimal disruption, quicker installation and less connections than 3 pipe equivalents
- Designed from day 1 for seasonal efficiency – up to 27% more efficient than the 2010 equivalent
- Flat tube aluminium micro-channel heat exchanger protected with a sacrificial zinc coating - a world's first in VRF providing higher heat transfer, improved efficiency and reduced weight, size and refrigerant volume
- New energy-saving inverter driven outdoor compressor with very low start currents
- Improved flow distribution of the refrigerant circuit and redesigned bellmouth grille to minimise power input
- Reduced standby power by up to 50% using induction heated compressor
- Automated dynamic control of refrigerant evaporating temperature based on internal load, provides added comfort whilst improving seasonal efficiency by 8%
- Increase and fix system evaporating temperature to enable increased indoor unit SHF, air off temperature conditions and therefore efficiency and comfort
- Compact chassis for easier installation - no requirement for plant rooms or bulky service shafts
- The choice to either provide standard reverse defrost or can continue to provide indoor units heat during the defrost cycle by utilising hot gas defrost technology

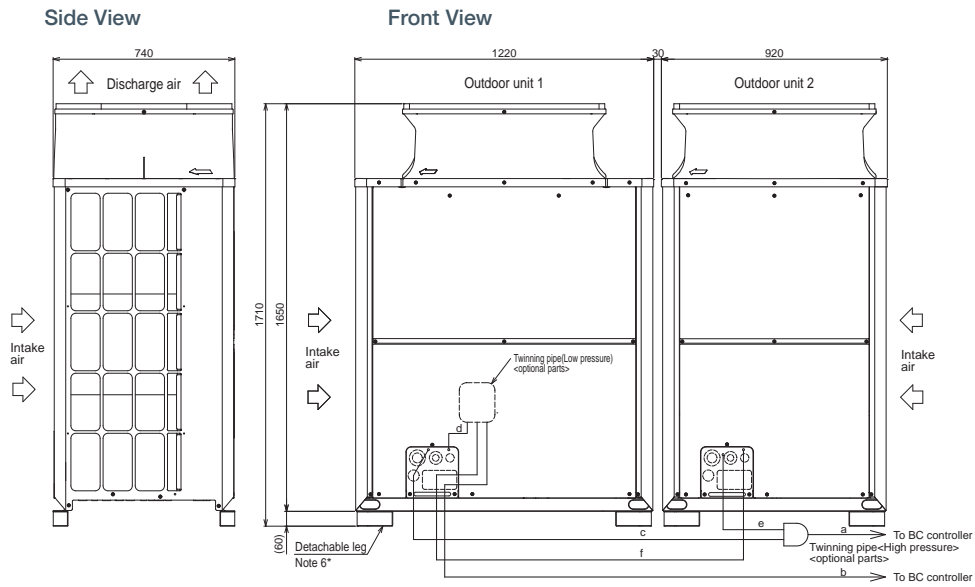


OUTDOOR UNITS		PURY-EP550YSLM-A	PURY-EP600YSLM-A	PURY-EP650YSLM-A	PURY-EP700YSLM-A
CAPACITY (kW)	Heating (nominal)	69.0	76.5	81.5	88.0
	Cooling (nominal)	63.0	69.0	73.0	80.0
	High Performance Heating (UK)	62.4	69.2	73.8	88.0
	COP Priority Heating (UK)	60.0	66.6	70.9	76.6
	Cooling (UK)	55.9	61.2	64.8	69.5
POWER INPUT (kW)	Heating (nominal)	18.44	20.34	22.51	25.28
	Cooling (nominal)	17.35	19.54	22.12	25.97
	High Performance Heating (UK)	21.05	23.22	25.69	31.64
	COP Priority Heating (UK)	16.86	18.59	20.58	23.47
	Cooling (UK)	8.49	9.80	10.79	11.85
COP / EER (nominal)	3.74 / 3.63	3.76 / 3.53	3.62 / 3.30	3.48 / 3.08	
SCOP / SEER (system)	5.60 / 7.88	5.63 / 7.06	5.47 / 6.87	5.75 / 6.70	
MAX No. OF CONNECTABLE INDOOR UNITS	50	50	50	50	
MAX CONNECTABLE CAPACITY	50-150% OU Capacity	50-150% OU Capacity	50-150% OU Capacity	50-150% OU Capacity	
AIRFLOW (m ³ /min)	High	230 / 185	230 / 230	230 / 230	230 / 230
PIPE SIZE mm (in)	Gas	28.58 (1-1/8")	28.58 (1-1/8")	28.58 (1-1/8")	28.58 (1-1/8")
	Liquid	28.58 (1-1/8")	28.58 (1-1/8")	28.58 (1-1/8")	34.93 (1-3/8")
SOUND PRESSURE LEVEL (dBA)		64.5	65.5	65.5	65.5
SOUND POWER LEVEL (dBA)		88	89	89	89
WEIGHT (kg)		260 + 218	260 + 260	260 + 260	260 + 260
DIMENSIONS (mm)	Width	1220 + 920	1220 + 1220	1220 + 1220	1220 + 1220
	Depth	740	740	740	740
	Height (1650mm without legs)	1710	1710	1710	1710
ELECTRICAL SUPPLY *		380-415v, 50Hz	380-415v, 50Hz	380-415v, 50Hz	380-415v, 50Hz
PHASE*		Three	Three	Three	Three
STARTING CURRENT (A)*		8 / 8	8 / 8	8 / 8	8 / 8
NOMINAL SYSTEM RUNNING CURRENT (A)* Heating/Cooling [MAX]		28.5 / 26.8 [23.6+19.9]	31.4 / 30.2 [23.6+23.6]	34.7 / 34.1 [30.6+23.6]	39.0 / 40.1 [30.6+30.6]
GUARANTEED OPERATING RANGE (°C) Heating / Cooling		-20/-15.5 / -5/-46	-20/-15.5 / -5/-46	-20/-15.5 / -5/-46	-20/-15.5 / -5/-46
FUSE RATING (MCB sizes BS EN 60947-2) - (A)*		1 x 25 / 1 x 20	1 x 25 / 1 x 25	1 x 32 / 1 x 25	1 x 32 / 1 x 32
MAINS CABLE No. Cores*		4	4	4	4

Note: * A separate power supply is required for each module. Where more than one figure is quoted there are multiple modules. Price includes Twinning Kit where necessary.

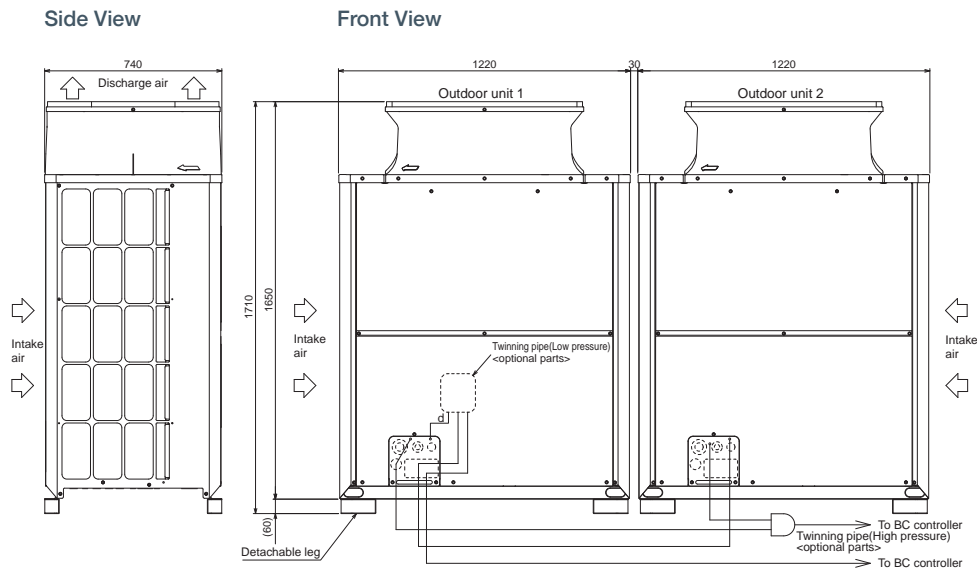
Product Dimensions

PURY-EP550YSLM-A



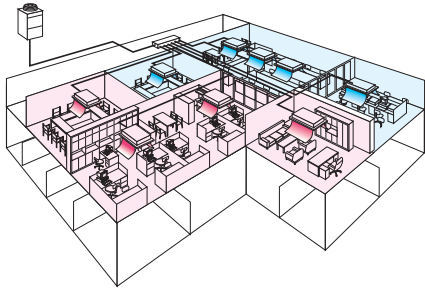
Product Dimensions

PURY-EP600/650/700YSLM-A



R2 Series High COP (30-36hp)

Simultaneous Heating and Cooling with Heat Recovery Outdoor Unit



Improved for even higher efficiency

Throughout the year, many buildings require cooling in some areas and heating in others - even in adjacent rooms. The outstanding City Multi R2 system meets this requirement by distributing surplus heat from cooling operations (and vice versa) to rooms where it is needed. This efficiency can result in energy savings of up to 30% over conventional systems.

Key Features

- Easy to install unique 2-pipe technology means minimal disruption, quicker installation and less connections than 3 pipe equivalents
- Designed from day 1 for seasonal efficiency – up to 27% more efficient than the 2010 equivalent
- Flat tube aluminium micro-channel heat exchanger protected with a sacrificial zinc coating - a world's first in VRF providing higher heat transfer, improved efficiency and reduced weight, size and refrigerant volume
- New energy-saving inverter driven outdoor compressor with very low start currents
- Improved flow distribution of the refrigerant circuit and redesigned bellmouth grille to minimise power input
- Reduced standby power by up to 50% using induction heated compressor
- Automated dynamic control of refrigerant evaporating temperature based on internal load, provides added comfort whilst improving seasonal efficiency by 8%
- Increase and fix system evaporating temperature to enable increased indoor unit SHF, air off temperature conditions and therefore efficiency and comfort
- Compact chassis for easier installation - no requirement for plant rooms or bulky service shafts
- The choice to either provide standard reverse defrost or can continue to provide indoor units heat during the defrost cycle by utilising hot gas defrost technology

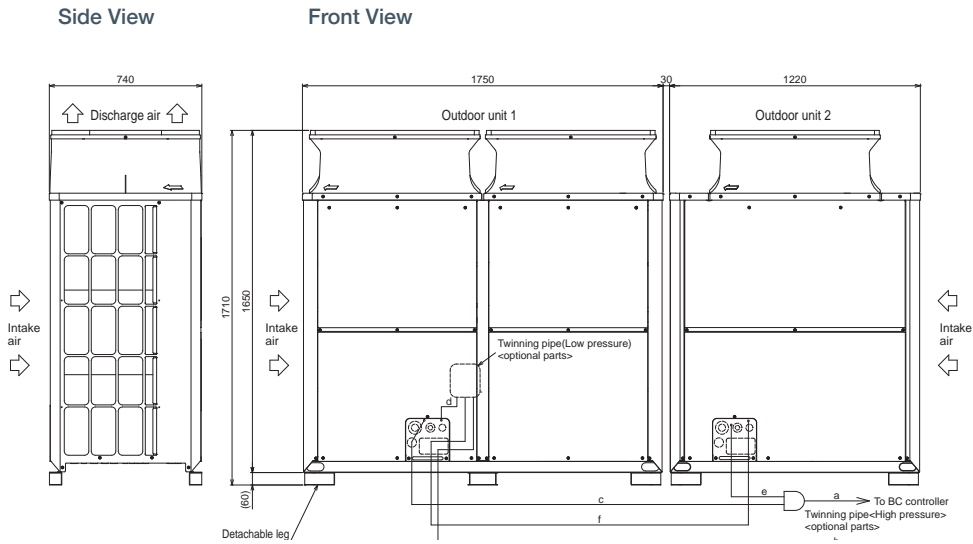


OUTDOOR UNITS		PURY-EP750YSLM-A	PURY-EP800YSLM-A	PURY-EP850YSLM-A	PURY-EP900YSLM-A
CAPACITY (kW)	Heating (nominal)	95.0	100.0	108.0	113.0
	Cooling (nominal)	85.0	90.0	96.0	101.0
	High Performance Heating (UK)	95.0	100.0	102.8	107.6
	COP Priority Heating (UK)	82.7	87.0	94.8	99.2
	Cooling (UK)	73.8	78.2	85.2	89.6
POWER INPUT (kW)	Heating (nominal)	26.38	26.80	29.75	32.01
	Cooling (nominal)	25.99	25.93	28.48	30.98
	High Performance Heating (UK)	33.02	33.54	39.69	42.71
	COP Priority Heating (UK)	24.48	24.87	27.19	29.26
	Cooling (UK)	12.11	12.34	13.29	14.11
COP / EER (nominal)	3.60 / 3.27	3.73 / 3.47	3.63 / 3.37	3.53 / 3.26	
SCOP / SEER (system)	4.91 / 6.80	4.78 / 6.88	4.83 / 7.14	4.93 / 7.19	
MAX No. OF CONNECTABLE INDOOR UNITS		50	50	50	50
MAX CONNECTABLE CAPACITY		50-150% OU Capacity	50-150% OU Capacity	50-150% OU Capacity	50-150% OU Capacity
AIRFLOW (m ³ /min)	High	320 / 320	320 / 320	320 / 320	320 / 320
	Gas	28.58 (1-1/8")	28.58 (1-1/8")	28.58 (1-1/8")	28.58 (1-1/8")
PIPE SIZE mm (in)	Liquid	34.93 (1-3/8")	34.93 (1-3/8")	41.28 (1-5/8")	41.28 (1-5/8")
	Gas	28.58 (1-1/8")	28.58 (1-1/8")	28.58 (1-1/8")	28.58 (1-1/8")
SOUND PRESSURE LEVEL (dBA)		65.5	65.5	65.5	65.5
SOUND POWER LEVEL (dBA)		89	89	89	89
WEIGHT (kg)		338 + 260	338 + 338	338 + 338	338 + 338
DIMENSIONS (mm)	Width	1750 + 1220	1750 + 1750	1750 + 1750	1750 + 1750
	Depth	740	740	740	740
	Height (1650mm without legs)	1710	1710	1710	1710
ELECTRICAL SUPPLY *		380-415v, 50Hz	380-415v, 50Hz	380-415v, 50Hz	380-415v, 50Hz
PHASE*		Three	Three	Three	Three
STARTING CURRENT (A)*		8 / 8	8 / 8	8 / 8	8 / 8
NOMINAL SYSTEM RUNNING CURRENT (A)* Heating/Cooling [MAX]		40.7 / 40.1 [31.7+30.6]	41.4 / 40.0 [31.7+31.7]	45.9 / 44.0 [37.4+31.7]	49.4 / 47.8 [37.4+37.4]
GUARANTEED OPERATING RANGE (°C) Heating / Cooling		-20-15.5 / -5-46	-20-15.5 / -5-46	-20-15.5 / -5-46	-20-15.5 / -5-46
FUSE RATING (MCB sizes BS EN 60947-2) - (A)*		1 x 32 / 1 x 32	1 x 32 / 1 x 32	1 x 40 / 1 x 32	1 x 40 / 1 x 40
MAINS CABLE No. Cores*		4	4	4	4

Note: * A separate power supply is required for each module. Where more than one figure is quoted there are multiple modules. Price includes Twinning Kit where necessary.

Product Dimensions

PURY-EP750YSLM-A



Product Dimensions

PURY-EP800/850/900YSLM-A

