

August 2009

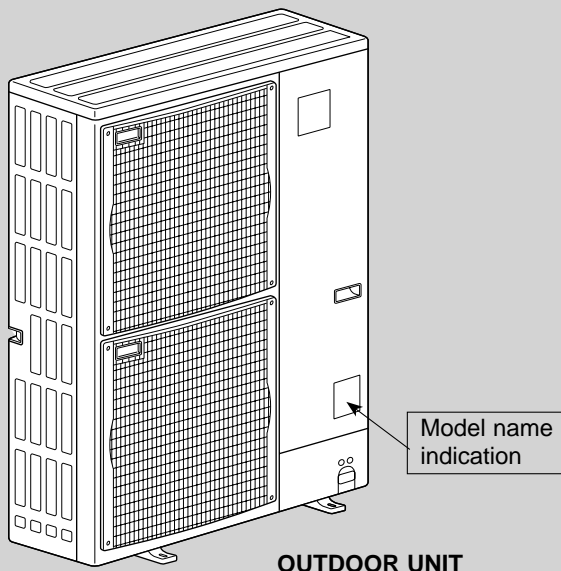
No. OCB446

REVISED EDITION-A



# PARTS CATALOG

| [Model name]<br><Outdoor unit> | [Service Ref.]   |                    |
|--------------------------------|------------------|--------------------|
| PUMY-P100VHMB                  | PUMY-P100VHMB    | PUMY-P100VHMBR1    |
| PUMY-P125VHMB                  | PUMY-P125VHMB    | PUMY-P125VHMBR1    |
| PUMY-P140VHMB                  | PUMY-P140VHMB    | PUMY-P140VHMBR1    |
| PUMY-P100VHMB-BS               | PUMY-P100VHMB-BS | PUMY-P100VHMBR1-BS |
| PUMY-P125VHMB-BS               | PUMY-P125VHMB-BS | PUMY-P125VHMBR1-BS |
| PUMY-P140VHMB-BS               | PUMY-P140VHMB-BS | PUMY-P140VHMBR1-BS |
| PUMY-P100YHMB                  | PUMY-P100YHMB    | PUMY-P100YHMBR1    |
| PUMY-P125YHMB                  | PUMY-P125YHMB    | PUMY-P125YHMBR1    |
| PUMY-P140YHMB                  | PUMY-P140YHMB    | PUMY-P140YHMBR1    |
| PUMY-P100YHMB-BS               | PUMY-P100YHMB-BS | PUMY-P100YHMBR1-BS |
| PUMY-P125YHMB-BS               | PUMY-P125YHMB-BS | PUMY-P125YHMBR1-BS |
| PUMY-P140YHMB-BS               | PUMY-P140YHMB-BS | PUMY-P140YHMBR1-BS |



## CONTENTS

1. RoHS PARTS LIST ..... 2
2. OPTIONAL PARTS ..... 7

**SERVICE MANUAL (OCH446)**

**Revision :**

- PUMY-P100, 125, 140V/YHMBR1(-BS) are added in REVISED EDITION-A.
- Some descriptions have been modified.

- Please void OCB446.

**NOTE :**

- RoHS compliant products have <G> mark on spec name plate.
- For servicing of RoHS compliant products, refer to RoHS PARTS LIST.

## 1-1. FUNCTIONAL PARTS

PUMY-P100VHMB

PUMY-P100VHMB-BS

PUMY-P125VHMB

PUMY-P125VHMB-BS

PUMY-P140VHMB

PUMY-P140VHMB-BS

PUMY-P100VHMBR1

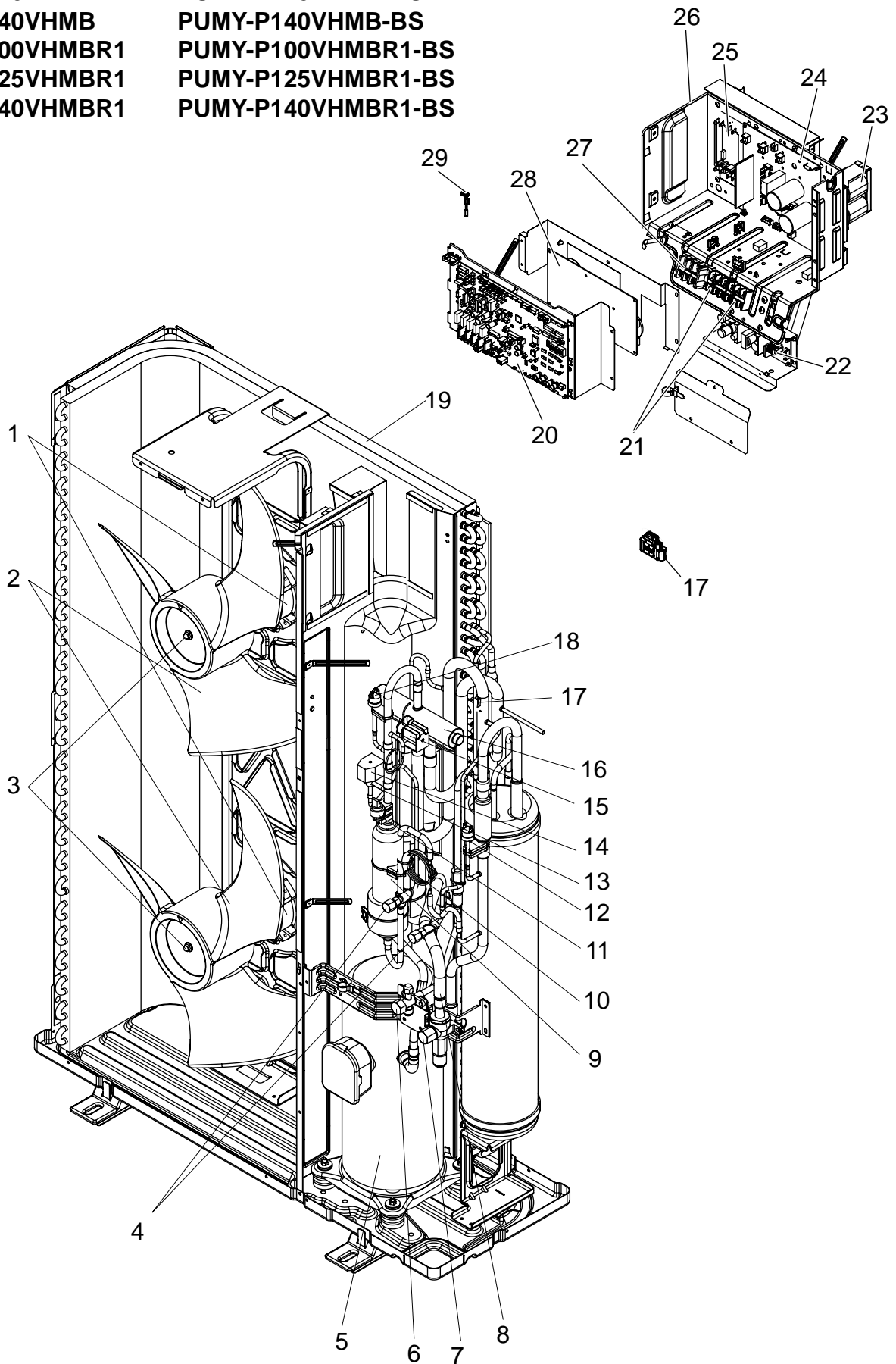
PUMY-P100VHMBR1-BS

PUMY-P125VHMBR1

PUMY-P125VHMBR1-BS

PUMY-P140VHMBR1

PUMY-P140VHMBR1-BS





Part numbers that are circled are not shown in the figure.

| No. | RoHS | Part No.    | Part Name                    | Specifications                          | Q'ty/set          |             | Remarks<br>(Drawing No.) | Wiring<br>Diagram<br>Symbol | Recom-<br>mended<br>Q'ty |
|-----|------|-------------|------------------------------|---|-------------------|-------------|--------------------------|-----------------------------|--------------------------|
|     |      |             |                              |   | PUMY-P100/125/140 |             |                          |                             |                          |
|     |      |             |                              |   | VHMB(-BS)         | VHMBR1(-BS) |                          |                             |                          |
| 1   | G    | T7W E27 763 | FAN MOTOR                    |   | 2                 | 2           |                          | MF1, 2                      |                          |
| 2   | G    | R01 E08 115 | PROPELLER FAN                |   | 2                 | 2           |                          |                             |                          |
| 3   | G    | R01 E09 097 | NUT                          |   | 2                 | 2           |                          |                             |                          |
| 4   | G    | R01 E14 413 | CHARGE PLUG                  |   | 2                 | 2           |                          |                             |                          |
| 5   | G    | T97 415 763 | COMPRESSOR                   | ANB33FDMMT<br>Including<br>RUBBER MOUNT | 1                 | 1           |                          | MC                          |                          |
| 6   | G    | R01 E13 410 | STOP VALVE                   | 3/8                                     | 1                 | 1           |                          |                             |                          |
| 7   | G    | R01 E11 411 | BALL VALVE                   | 5/8                                     | 1                 | 1           |                          |                             |                          |
| 8   | G    | R01 E06 450 | STRAINER                     |   | 1                 | 1           |                          |                             |                          |
| 9   | G    | R01 E12 490 | OIL SEPARATOR                |   | 1                 | 1           |                          |                             |                          |
| 10  | G    | R01 E26 425 | CAPILLARY TUBE               | ø2.5xø0.8x1000mm                        | 1                 | 1           |                          |                             |                          |
| 11  | G    | R01 E07 208 | H.P SENSOR                   |   | 1                 | 1           |                          | 63HS                        |                          |
| 12  | G    | R01 E00 209 | LOW PRESSURE SWITCH          |   | 1                 | 1           |                          | 63L                         |                          |
| 13  | G    | R01 E14 428 | BYPASS VALVE                 |   | 1                 | 1           |                          |                             |                          |
| 14  | G    | T7W E51 242 | SOLENOID COIL <BYPASS VALVE> |   | 1                 | 1           |                          | SV1                         |                          |
| 15  | G    | T7W E25 242 | SOLENOID COIL <4-WAY VALVE>  |   | 1                 | 1           |                          | 21S4                        |                          |
| 16  | G    | R01 E32 403 | 4-WAY VALVE                  |   | 1                 | 1           |                          |                             |                          |
| 17  | G    | R01 H01 202 | THERMISTOR                   |   | 1                 | 1           |                          | TH6, 7                      |                          |
| 18  | G    | R01 E06 208 | HIGH PRESSURE SWITCH         |   | 1                 | 1           |                          | 63H                         |                          |
| 19  | G    | T7W E26 408 | HEAT EXCHANGER               |   | 1                 |             |                          |                             |                          |
|     | G    | T7W E41 408 | HEAT EXCHANGER               |   |                   | 1           |                          |                             |                          |
| 20  | G    | R01 V03 310 | CONTROLLER CIRCUIT BOARD     |   | 1                 |             |                          | C.B.                        |                          |
|     | G    | R01 V14 310 | CONTROLLER CIRCUIT BOARD     |   |                   | 1           |                          | C.B.                        |                          |
| 21  | G    | R01 E27 246 | TERMINAL BLOCK               | 3P (M1, M2, S)                          | 2                 | 2           |                          | TB3, TB7                    |                          |
| 22  | G    | R01 E04 311 | M-POWER BOARD                |   | 1                 | 1           |                          | M-NET.P.B.                  |                          |
| 23  | G    | T7W E17 259 | REACTOR                      |   | 1                 | 1           |                          | DCL                         |                          |
| 24  | G    | R01 E65 313 | POWER CIRCUIT BOARD          |   | 1                 | 1           |                          | P.B.                        |                          |
| 25  | G    | R01 E07 233 | ACT MODULE                   |   | 1                 | 1           |                          | ACTM                        |                          |
| 26  | G    | —           | ELECTRIACL PARTS BOX         |   | 1                 | 1           | (BK00C681G09)            |                             |                          |
| 27  | G    | T7W A15 716 | TERMINAL BLOCK               | 3P (L, N, ⊕)                            | 1                 | 1           |                          | TB1                         |                          |
| 28  | G    | R01 E18 346 | NOISE FILTER CIRCUIT BOARD   |   | 1                 | 1           |                          | N.F.                        |                          |
| 29  | G    | R01 E99 202 | THERMISTOR (HEATSINK)        |   | 1                 | 1           |                          | TH8                         |                          |
| 30  | G    | R01 E22 255 | MAIN SMOOTHING CAPACITOR     |   | 1                 | 1           |                          | CE                          |                          |
| 31  | G    | R01 H00 202 | THERMISTOR (OUTDOOR PIPE)    |   | 1                 | 1           |                          | TH3                         |                          |
| 32  | G    | R01 E17 201 | THERMISTOR (DISCHARGE)       |   | 1                 | 1           |                          | TH4                         |                          |
| 33  | G    | R01 E06 239 | FUSE                         | 250V, 6.3A                              | 2                 | 2           |                          | F1, 2                       |                          |

**FUNCTIONAL PARTS**

**PUMY-P100YHMB**

**PUMY-P125YHMB**

**PUMY-P140YHMB**

**PUMY-P100YHMBR1**

**PUMY-P125YHMBR1**

**PUMY-P140YHMBR1**

**PUMY-P100YHMB-BS**

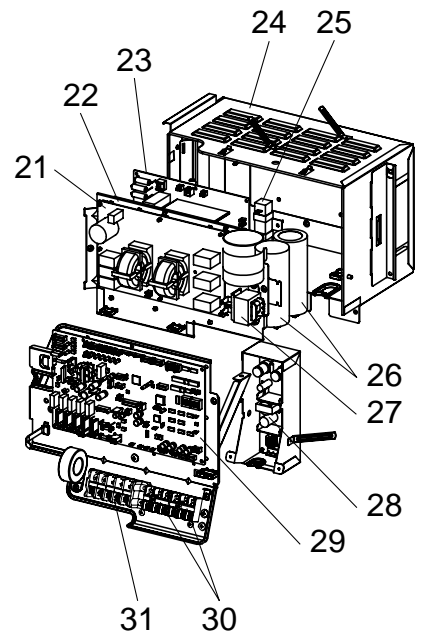
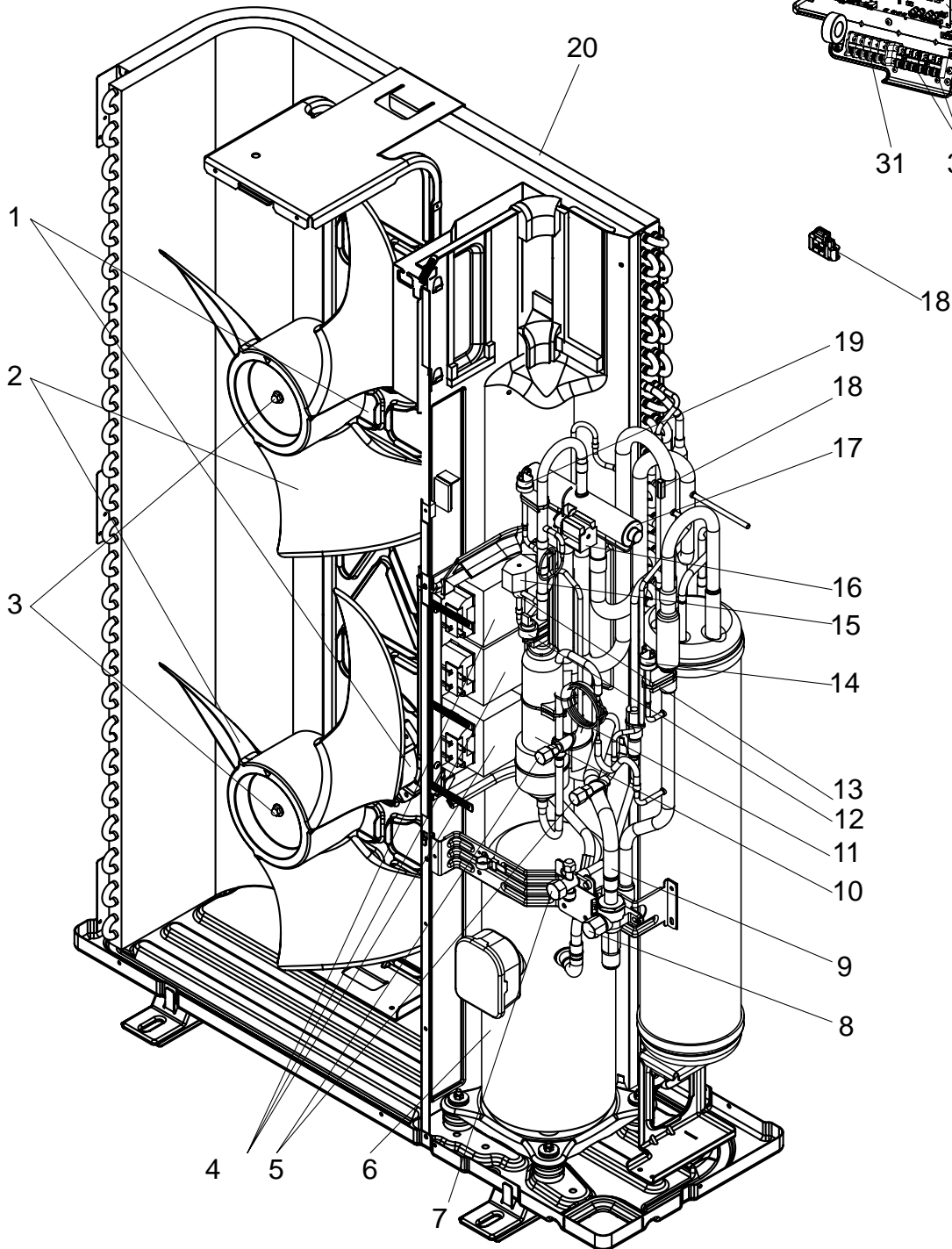
**PUMY-P125YHMB-BS**

**PUMY-P140YHMB-BS**

**PUMY-P100YHMBR1-BS**

**PUMY-P125YHMBR1-BS**

**PUMY-P140YHMBR1-BS**



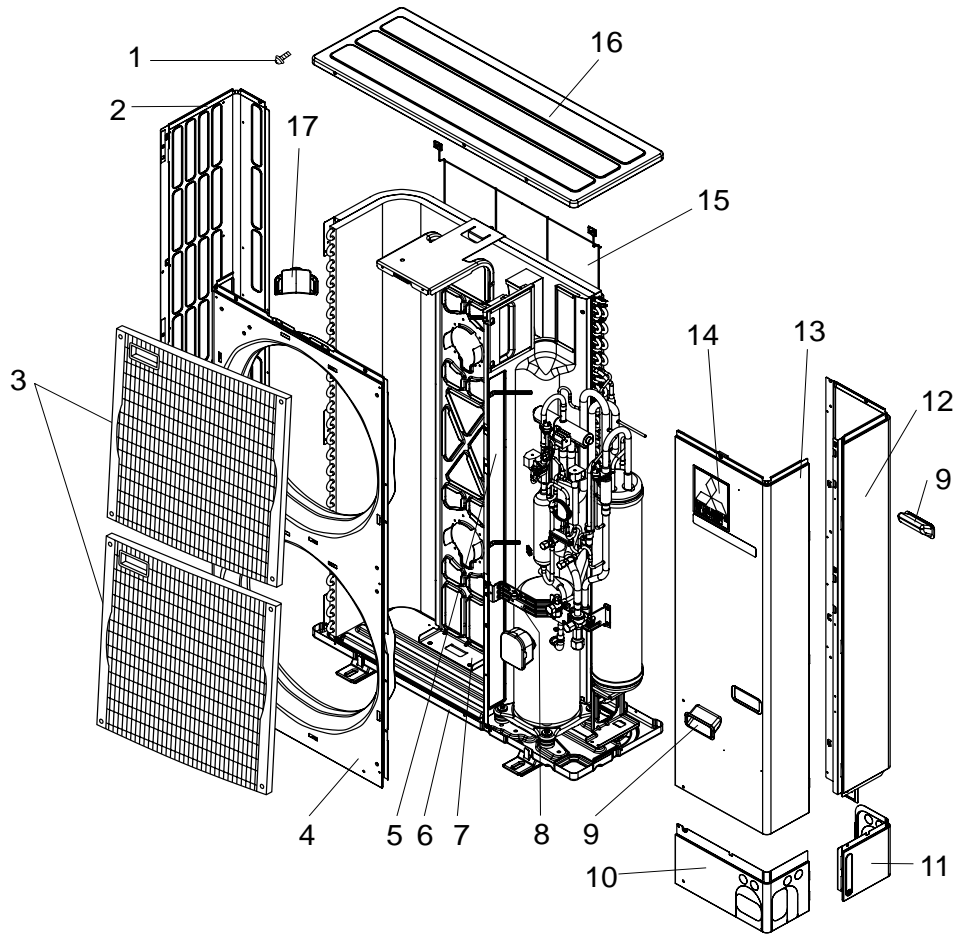


Part numbers that are circled are not shown in the figure.

| No. | RoHS | Part No.    | Part Name                         | Specification                           | Q'ty/set          |             | Remarks<br>(Drawing No.) | Wiring<br>Diagram<br>Symbol | Recom-<br>mended<br>Q'ty |
|-----|------|-------------|-----------------------------------|---|-------------------|-------------|--------------------------|-----------------------------|--------------------------|
|     |      |             |                                   |   | PUMY-P100/125/140 |             |                          |                             |                          |
|     |      |             |                                   |   | YHMB(-BS)         | YHMBR1(-BS) |                          |                             |                          |
| 1   | G    | T7W E27 763 | FAN MOTOR                         |   | 2                 | 2           |                          | MF1, 2                      |                          |
| 2   | G    | R01 E08 115 | PROPELLER FAN                     |   | 2                 | 2           |                          |                             |                          |
| 3   | G    | R01 E09 097 | NUT                               |   | 2                 | 2           |                          |                             |                          |
| 4   | G    | T7W E12 259 | REACTOR                           |   | 3                 | 3           |                          | ACL1,2,3                    |                          |
| 5   | G    | R01 E14 413 | CHARGE PLUG                       |   | 2                 | 2           |                          |                             |                          |
| 6   | G    | T97 415 764 | COMPRESSOR                        | ANB33FDNMT<br>Including<br>RUBBER MOUNT | 1                 | 1           |                          | MC                          |                          |
| 7   | G    | R01 E13 410 | STOP VALVE                        | 3/8                                     | 1                 | 1           |                          |                             |                          |
| 8   | G    | R01 E11 411 | BALL VALVE                        | 5/8                                     | 1                 | 1           |                          |                             |                          |
| 9   | G    | R01 E06 450 | STRAINER                          |   | 1                 | 1           |                          |                             |                          |
| 10  | G    | R01 E12 490 | OIL SEPARATOR                     |   | 1                 | 1           |                          |                             |                          |
| 11  | G    | R01 E26 425 | CAPILLARY TUBE                    | φ2.5×φ0.8×1000mm                        | 1                 | 1           |                          |                             |                          |
| 12  | G    | R01 E07 208 | H.P SENSOR                        |   | 1                 | 1           |                          | 63HS                        |                          |
| 13  | G    | R01 E14 428 | BYPASS VALVE                      |   | 1                 | 1           |                          |                             |                          |
| 14  | G    | R01 E00 209 | LOW PRESSURE SWITCH               |   | 1                 | 1           |                          | 63L                         |                          |
| 15  | G    | T7W E51 242 | SOLENOID VALVE COIL(BYPASS VALVE) |   | 1                 | 1           |                          | SV1                         |                          |
| 16  | G    | R01 E58 242 | SOLENOID COIL(4-WAY VALVE)        |   | 1                 | 1           |                          | 21S4                        |                          |
| 17  | G    | R01 E32 403 | 4-WAY VALVE                       |   | 1                 | 1           |                          |                             |                          |
| 18  | G    | R01 E94 202 | THERMISTOR                        |   | 1                 | 1           |                          | TH6, 7                      |                          |
| 19  | G    | R01 E06 208 | HIGH PRESSURE SWITCH              |   | 1                 | 1           |                          | 63H                         |                          |
| 20  | G    | T7W E26 408 | HEAT EXCHANGER                    |   | 1                 |             |                          |                             |                          |
|     | G    | T7W E41 408 | HEAT EXCHANGER                    |   |                   | 1           |                          |                             |                          |
| 21  | G    | T7W E23 346 | NOISE FILTER CIRCUIT BOARD        |   | 1                 | 1           |                          | N.F.                        |                          |
| 22  | G    | T7W E75 310 | CONVERTER CIRCUIT BOARD           |   | 1                 | 1           |                          | CONV.B.                     |                          |
| 23  | G    | T7W E42 313 | POWER CURCUIT BOARD               |   | 1                 |             |                          | P.B.                        |                          |
|     | G    | T7W E60 313 | POWER CURCUIT BOARD               |   |                   | 1           |                          | P.B.                        |                          |
| 24  | G    | —           | ELECTRICAL PARTS BOX              |   | 1                 | 1           | (BK00C410G08)            |                             |                          |
| 25  | G    | R01 E10 233 | RESISTOR                          |   | 1                 | 1           |                          | RS                          |                          |
| 26  | G    | T7W E21 255 | MAIN SMOOTHING CAPACITOR          |   | 2                 | 2           |                          | CB1,CB2                     |                          |
| 27  | G    | R01 E31 259 | REACTOR                           |   | 1                 | 1           |                          | ACL4                        |                          |
| 28  | G    | R01 E04 311 | M-POWER BOARD                     |   | 1                 | 1           |                          | M-P.B.                      |                          |
| 29  | G    | R01 V03 310 | CONTROLLER CIRCUIT BOARD          |   | 1                 |             |                          | C.B.                        |                          |
|     | G    | R01 V14 310 | CONTROLLER CIRCUIT BOARD          |   |                   | 1           |                          | C.B.                        |                          |
| 30  | G    | R01 E27 246 | TERMINAL BLOCK                    | 3P (M1, M2, S)                          | 2                 | 2           |                          | TB3,TB7                     |                          |
| 31  | G    | T7W E30 716 | TERMINAL BLOCK                    | 5P (L1, L2, L3, N, 0)                   | 1                 | 1           |                          | TB1                         |                          |
| 32  | G    | R01 E06 239 | FUSE                              | 250V 6.3A                               | 2                 | 2           |                          | F1, 2                       |                          |
| 33  | G    | R01 H00 202 | THERMISTOR (OUTDOOR PIPE)         |   | 1                 | 1           |                          | TH3                         |                          |
| 34  | G    | T7W E10 254 | CAPACITOR                         |   | 1                 | 1           |                          | CK                          |                          |
| 35  | G    | R01 E11 201 | THERMISTOR (DISCHARGE)            |   | 1                 | 1           |                          | TH4                         |                          |

**1-2. STRUCTURAL PARTS**  
**PUMY-P100/125/140VHMB(-BS)**  
**PUMY-P100/125/140YHMB(-BS)**

**PUMY-P100/125/140VHMBR1(-BS)**  
**PUMY-P100/125/140YHMBR1(-BS)**



| No. | RoHS | Part No.    | Part Name           | Specification | Q'ty/set                  |                           | Remarks<br>(Drawing No.) | Wiring<br>Diagram<br>Symbol | Recom-<br>mended<br>Q'ty |
|-----|------|-------------|---------------------|---------------|---------------------------|---------------------------|--------------------------|-----------------------------|--------------------------|
|     |      |             |                     |               | PUMY-P100/125/140         |                           |                          |                             |                          |
|     |      |             |                     |               | VHMB(-BS)/<br>VHMBR1(-BS) | YHMB(-BS)/<br>YHMBR1(-BS) |                          |                             |                          |
| 1   | G    | —           | F.ST SCREW          | (5×10)        | 38                        | 38                        | (DG12F536H10)            |                             |                          |
| 2   | G    | T7W E06 662 | SIDE PANEL (L)      |               | 1                         | 1                         |                          |                             |                          |
| 3   | G    | T7W E03 691 | FAN GRILLE          |               | 2                         | 2                         |                          |                             |                          |
| 4   | G    | T7W E06 667 | FRONT PANEL         |               | 1                         | 1                         |                          |                             |                          |
| 5   | G    | —           | SEPARATOR           |               | 1                         |                           | (BK00C143GE8)            |                             |                          |
|     | G    | —           | SEPARATOR           |               |                           | 1                         | (BK00C409G18)            |                             |                          |
| 6   | G    | R01 E26 686 | BASE ASSY           |               | 1                         | 1                         |                          |                             |                          |
| 7   | G    | R01 E19 130 | MOTOR SUPPORT       |               | 1                         | 1                         |                          |                             |                          |
| 8   | G    | —           | VALVE BED ASSY      |               | 1                         | 1                         | (BK00C142G29)            |                             |                          |
| 9   | G    | R01 E01 655 | HANDLE              |               | 2                         | 2                         |                          |                             |                          |
| 10  | G    | R01 E14 658 | COVER PANEL (FRONT) |               | 1                         | 1                         |                          |                             |                          |
| 11  | G    | R01 E24 658 | COVER PANEL (REAR)  |               | 1                         | 1                         |                          |                             |                          |
| 12  | G    | T7W E19 661 | SIDE PANEL (R)      |               | 1                         | 1                         |                          |                             |                          |
|     | G    | T7W E06 668 | SERVICE PANEL       |               | 1                         |                           |                          |                             |                          |
| 13  | G    | T7W E13 668 | SERVICE PANEL       |               |                           | 1                         |                          |                             |                          |
|     | G    | —           | LABEL (MITSUBISHI)  |               | 1                         | 1                         | (DG79R130H01)            |                             |                          |
| 14  | G    | R01 E07 698 | REAR GUARD          |               | 1                         | 1                         |                          |                             |                          |
| 16  | G    | R01 E29 641 | TOP PANEL           |               | 1                         |                           |                          |                             |                          |
|     | G    | R01 E28 641 | TOP PANEL           |               |                           | 1                         |                          |                             |                          |
| 17  | G    | R01 E02 655 | HANDLE              |               | 1                         | 1                         |                          |                             |                          |

**2****OPTIONAL PARTS****DRAIN SOCKET**

|          |              |
|----------|--------------|
| Part No. | PAC-SG61DS-E |
|----------|--------------|

**AIR OUTLET GUIDE**

|          |              |
|----------|--------------|
| Part No. | PAC-SG59SG-E |
|----------|--------------|

\* Need 2 pieces.

**AIR GUIDE**

|          |              |
|----------|--------------|
| Part No. | PAC-SH63AG-E |
|----------|--------------|

\* Need 2 pieces.

**DRAIN PAN**

|          |              |
|----------|--------------|
| Part No. | PAC-SG64DP-E |
|----------|--------------|

**FILTER DRYER (For liquid line :  $\phi 9.52$ )**

|          |              |
|----------|--------------|
| Part No. | PAC-SG82DR-E |
|----------|--------------|

\* Only for R410A model (Don't use for R22 model.)

**BRANCH PIPE (Joint)**

| Part No.    | NUMBER OF BRANCHING POINTS |
|-------------|----------------------------|
| CMY-Y62-G-E | 2                          |
| CMY-Y64-G-E | 4                          |
| CMY-Y68-G-E | 8                          |

# CITY MULTI™



HEAD OFFICE : TOKYO BLDG., 2-7-3, MARUNOUCHI, CHIYODA-KU, TOKYO 100-8310, JAPAN

---