

# Y Series Standard (8-18hp)

## Heat Pump Outdoor Unit

### Setting the standard in efficiency

The City Multi Y Series makes use of a two pipe refrigerant circuit throughout, with branch pipes feeding indoor units, allowing manual changeover from cooling to heating to ensure that a constant indoor climate is maintained.

#### Key Features

- Designed from day 1 for seasonal efficiency
- New energy-saving inverter driven outdoor compressor with very low start currents
- Improved flow distribution of the refrigerant circuit and redesigned bellmouth grille to minimise power input
- Reduced standby power by up to 50% using induction heated compressor
- Automated dynamic control of refrigerant evaporating temperature based on internal load, provides added comfort whilst improving seasonal efficiency
- Increase and fix system evaporating temperature to enable increased indoor unit SHF, air off temperature conditions and therefore efficiency and comfort
- Compact chassis for easier installation - no requirement for plant rooms or bulky service shafts
- The choice of either provide standard reverse defrost or can continue to provide indoor units heat during the defrost cycle by utilising hot gas defrost technology
- Reduced refrigerant volume – ideal for compliance with EN378 and for help with BREEAM points



OUTDOOR UNITS		PUHY-P200YKB-A1	PUHY-P250YKB-A1	PUHY-P300YKB-A1	PUHY-P350YKB-A1	PUHY-P400YKB-A1	PUHY-P450YKB-A1
CAPACITY (kW)	Heating (nominal)	25.0	31.5	37.5	45.0	50.0	56.0
	Cooling (nominal)	22.4	28.0	33.5	40.0	45.0	50.0
	High Performance Heating (UK)	25.0	31.5	35.6	42.8	47.5	50.7
	COP Priority Heating (UK)	22.8	28.7	32.3	38.7	43.0	48.7
POWER INPUT (kW)	Cooling (UK)	20.0	25.0	29.9	35.8	40.1	44.5
	Heating (nominal)	5.81	7.34	9.07	11.13	12.50	15.55
	Cooling (nominal)	5.19	6.88	8.56	11.69	13.55	14.79
	High Performance Heating (UK)	7.32	9.25	12.06	14.80	16.63	17.73
COP / EER (nominal)	COP Priority Heating (UK)	5.75	7.27	8.98	11.02	12.38	15.08
	Cooling (UK)	3.01	3.99	4.96	6.78	7.86	9.54
COP / EER (nominal)		4.30 / 4.31	4.29 / 4.06	4.13 / 3.91	4.04 / 3.42	4.00 / 3.32	3.60 / 3.38
SCOP / SEER (system)		- / -	- / -	- / -	- / -	- / -	- / -
MAX No. OF CONNECTABLE INDOOR UNITS		17	21	26	30	34	39
MAX CONNECTABLE CAPACITY		50-130% OU Capacity	50-130% OU Capacity	50-130% OU Capacity	50-130% OU Capacity	50-130% OU Capacity	50-130% OU Capacity
AIRFLOW (m³/min)	High	175	175	210	210	210	360
	Gas	22.2 (7/8")	22.2 (7/8")	22.2 (7/8")	28.58 (1-1/8")	28.58 (1-1/8")	28.58 (1-1/8")
PIPE SIZE mm (in)	Liquid	9.52 (3/8")	9.52 (3/8")**	9.52 (3/8")**	12.7 (1/2")	12.7 (1/2")	15.88 (5/8")
	SOUND PRESSURE LEVEL (dBA)	57	59	61	61	63	66
SOUND POWER LEVEL (dBA)		78	79	83	83	83	85
WEIGHT (kg)		190	199	251	251	251	304
DIMENSIONS (mm)	Width	920	920	1220	1220	1220	1750
	Depth	740	740	740	740	740	740
	Height	1710	1710	1710	1710	1710	1710
(1650mm without legs)							
ELECTRICAL SUPPLY*		380-415v, 50Hz	380-415v, 50Hz	380-415v, 50Hz	380-415v, 50Hz	380-415v, 50Hz	380-415v, 50Hz
PHASE*		Three	Three	Three	Three	Three	Three
STARTING CURRENT (A)*		8	8	8	8	8	8
NOMINAL SYSTEM RUNNING CURRENT (A)* Heating / Cooling (MAX)		9.3 / 8.3 [16.1]	11.7 / 11.0 [17.8]	14.5 / 13.7 [22.1]	17.8 / 18.7 [28.2]	20.0 / 21.7 [32.7]	24.9 / 23.7 [37.8]
GUARANTEED OPERATING RANGE (°C) Heating / Cooling		-20-15.5 / -5-52	-20-15.5 / -5-52	-20-15.5 / -5-52	-20-15.5 / -5-52	-20-15.5 / -5-52	-20-15.5 / -5-52
FUSE RATING (MCB sizes BS EN 60947-2) - (A)*		1 x 20	1 x 20	1 x 25	1 x 32	1 x 40	1 x 40
MAINS CABLE No. Cores*		4 + earth	4 + earth	4 + earth	4 + earth	4 + earth	4 + earth

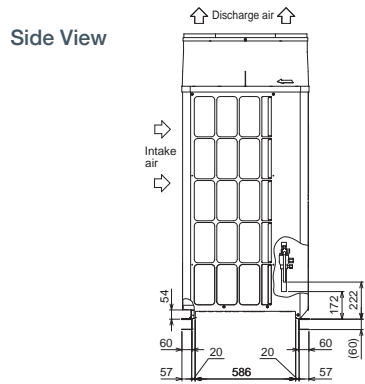
**Note:** \* A separate power supply is required for each module. Where more than one figure is quoted there are multiple modules. Price includes Twinning Kit where necessary. \*\*12.7mm(1/2") if P250 furthest length  $\geq$  90m, P300 furthest length  $\geq$  40m.

PIPING RESTRICTIONS	PUHY-P200-450YKB-A1
TOTAL PIPING LENGTH	1000m max
FURTHEST PIPING LENGTH	165m max
FURTHEST PIPING LENGTH AFTER 1st BRANCH	40m <sup>1</sup> max
BETWEEN INDOOR AND OUTDOOR UNITS - HEIGHT	50m max (40m max if outdoor installed below)
BETWEEN INDOOR AND INDOOR UNITS - HEIGHT	15m <sup>2</sup> max

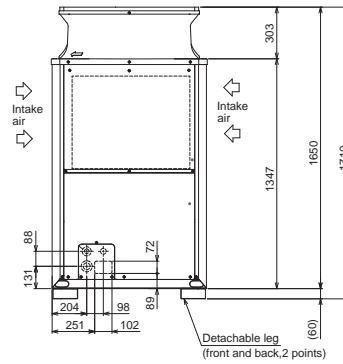
**Notes:** <sup>1</sup> 90m is available. When the piping length is 40m or longer, use the one size larger liquid pipe between the first joint all the way to all indoor units greater than 40m from first joint. <sup>2</sup> 30m is available. When the piping length is 15m or longer, use the one size larger liquid pipe between the first joint all the way to all indoor units greater than 15m from first joint.

Product Dimensions

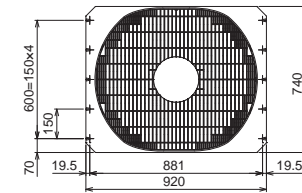
PUHY-P200/250YKB-A1



Front View

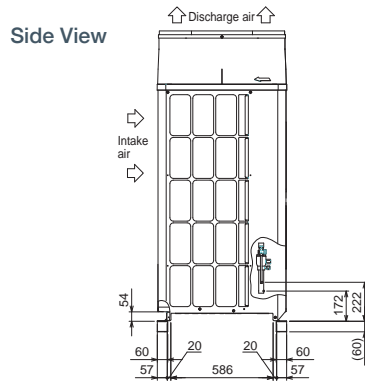


Upper View

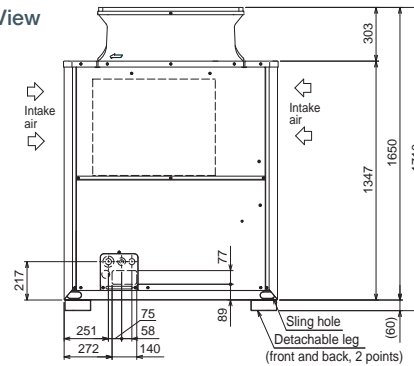


Product Dimensions

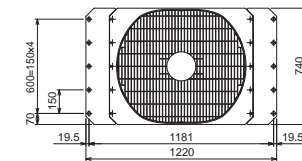
PUHY-P300/350/400YKB-A1



Front View

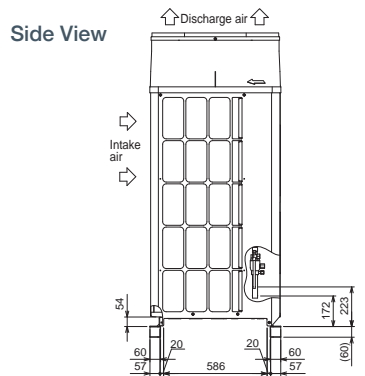


Upper View

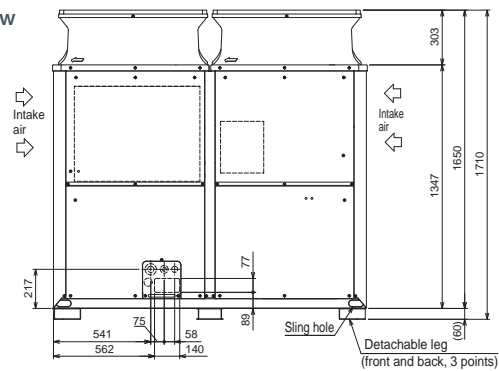


Product Dimensions

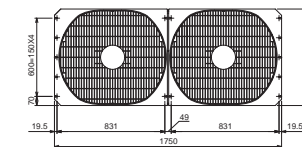
PUHY-P450YKB-A1



Front View



Upper View



# Y Series Standard (20-30hp)

## Heat Pump Outdoor Unit

### Setting the standard in efficiency

The City Multi Y Series makes use of a two pipe refrigerant circuit throughout, with branch pipes feeding indoor units, allowing manual changeover from cooling to heating to ensure that a constant indoor climate is maintained.

#### Key Features

- Designed from day 1 for seasonal efficiency
- New energy-saving inverter driven outdoor compressor with very low start currents
- Improved flow distribution of the refrigerant circuit and redesigned bellmouth grille to minimise power input
- Reduced standby power by up to 50% using induction heated compressor
- Automated dynamic control of refrigerant evaporating temperature based on internal load, provides added comfort whilst improving seasonal efficiency
- Increase and fix system evaporating temperature to enable increased indoor unit SHF, air off temperature conditions and therefore efficiency and comfort
- Compact chassis for easier installation - no requirement for plant rooms or bulky service shafts
- The choice to either provide standard reverse defrost or can continue to provide indoor units heat during the defrost cycle by utilising hot gas defrost technology
- Reduced refrigerant volume – ideal for compliance with EN378 and for help with BREEAM points



OUTDOOR UNITS		PUHY-P500YKB-A1	PUHY-P550YKB-A1	PUHY-P600YKB-A1	PUHY-P650YKB-A1	PUHY-P700YKB-A1	PUHY-P750YKB-A1
CAPACITY (kW)	Heating (nominal)	63.0	69.0	76.5	81.5	88.0	95.0
	Cooling (nominal)	55.0	63.0	69.0	73.0	80.0	85.0
	High Performance Heating (UK)	57.0	62.4	69.2	73.8	88.0	95.0
	COP Priority Heating (UK)	54.8	60.0	66.6	70.9	76.6	82.7
POWER INPUT (kW)	Heating (nominal)	18.52	17.29	19.36	21.00	22.97	24.93
	Cooling (nominal)	18.39	16.66	19.43	20.97	24.69	26.56
	High Performance Heating (UK)	21.11	19.71	22.07	23.94	28.94	31.41
	COP Priority Heating (UK)	17.96	15.73	17.62	19.11	21.36	23.18
COP / EER (nominal)	Heating (UK)	11.86	10.41	12.14	13.11	15.93	17.13
	Cooling (UK)	3.40 / 2.99	3.99 / 3.78	3.95 / 3.55	3.88 / 3.48	3.83 / 3.24	3.81 / 3.20
	SCOP / SEER (system)	- / -	- / -	- / -	- / -	- / -	- / -
	MAX No. OF CONNECTABLE INDOOR UNITS	43	47	50	50	50	50
MAX CONNECTABLE CAPACITY		50-130% OU Capacity	50-130% OU Capacity	50-130% OU Capacity	50-130% OU Capacity	50-130% OU Capacity	50-130% OU Capacity
AIRFLOW (m³/min)	High	360	210 / 175	210 / 175	210 / 210	210 / 210	210 / 210
	Gas	28.58 (1-1/8")	28.58 (1-1/8")	28.58 (1-1/8")	28.58 (1-1/8")	34.93 (1-3/8")	34.93 (1-3/8")
PIPE SIZE mm (in)	Liquid	15.88 (5/8")	15.88 (5/8")	15.88 (5/8")	15.88 (5/8")	19.05 (3/4")	19.05 (3/4")
	SOUND PRESSURE LEVEL (dBA)	66	63.5	63.5	64	64	65.5
SOUND POWER LEVEL (dBA)		86	84.5	84.5	86	86	86
WEIGHT (kg)		304	251 + 199	251 + 199	251 + 251	251 + 251	251 + 251
DIMENSIONS (mm)	Width	1750	1220 + 920	1220 + 920	1220 + 1220	1220 + 1220	1220 + 1220
	Depth	740	740	740	740	740	740
	Height	1710	1710	1710	1710	1710	1710
(1650mm without legs)							
ELECTRICAL SUPPLY*		380-415v, 50Hz	380-415v, 50Hz	380-415v, 50Hz	380-415v, 50Hz	380-415v, 50Hz	380-415v, 50Hz
PHASE*		Three	Three	Three	Three	Three	Three
STARTING CURRENT (A)*		8 / 8	8 / 8	8 / 8	8 / 8	8 / 8	8 / 8
NOMINAL SYSTEM RUNNING CURRENT (A)* Heating/Cooling [MAX]		29.7 / 29.4 [44.4]	27.7 / 26.7 [17.8+17.8]	31.0 / 31.1 [28.2+17.8]	33.6 / 33.6 [28.2+22.1]	36.8 / 39.5 [28.2+28.2]	39.9 / 42.5 [32.7+28.2]
GUARANTEED OPERATING RANGE (°C) Heating / Cooling		-20-15.5 / -5-52	-20-15.5 / -5-52	-20-15.5 / -5-52	-20-15.5 / -5-52	-20-15.5 / -5-52	-20-15.5 / -5-52
FUSE RATING (MCB sizes BS EN 60947-2) - (A)*		1 x 50	1 x 25 / 1 x 20	1 x 32 / 1 x 20	1 x 32 / 1 x 25	1 x 32 / 1 x 32	1 x 40 / 1 x 32
MAINS CABLE No. Cores*		4 + earth	4 + earth	4 + earth	4 + earth	4 + earth	4 + earth

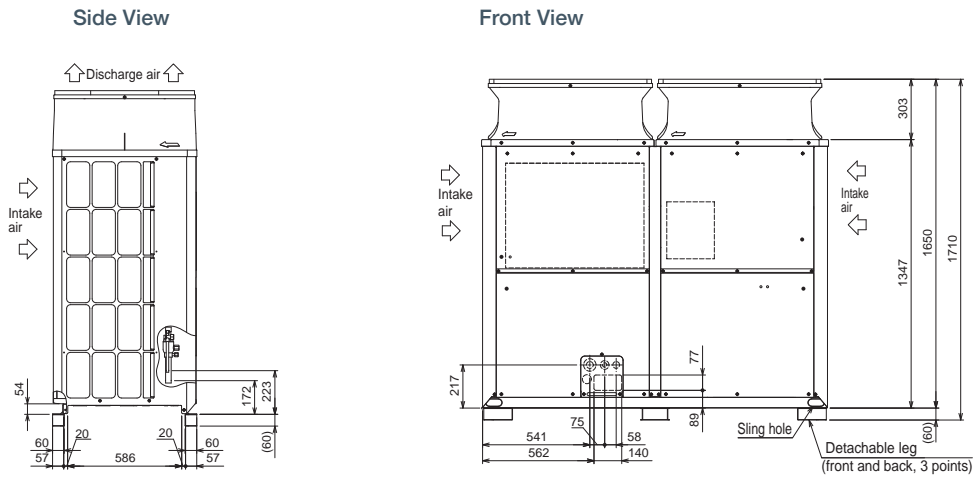
**Note:** \* A separate power supply is required for each module. Where more than one figure is quoted there are multiple modules. Price includes Twinning Kit where necessary.

PIPING RESTRICTIONS	PUHY-P500-750Y(S)KB-A1
TOTAL PIPING LENGTH	1000m max
FURTHEST PIPING LENGTH	165m max
FURTHEST PIPING LENGTH AFTER 1st BRANCH	40m <sup>1</sup> max
BETWEEN INDOOR AND OUTDOOR UNITS - HEIGHT	50m max (40m max if outdoor installed below)
BETWEEN INDOOR AND INDOOR UNITS - HEIGHT	15m <sup>2</sup> max

**Notes:** <sup>1</sup> 90m is available. When the piping length is 40m or longer, use the one size larger liquid pipe between the first joint all the way to all indoor units greater than 40m from first joint.  
<sup>2</sup> 30m is available. When the piping length is 15m or longer, use the one size larger liquid pipe between the first joint all the way to all indoor units greater than 15m from first joint.

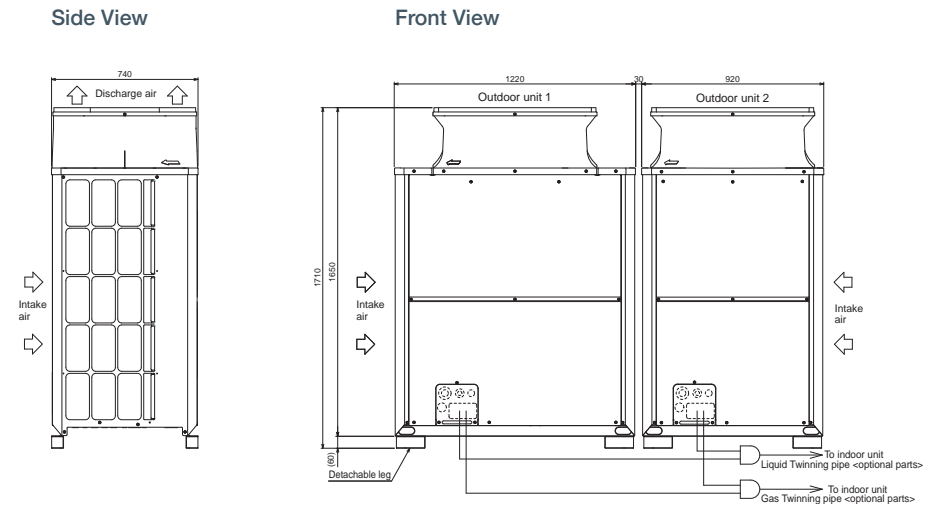
Product Dimensions

PUHY-P500YKB-A1



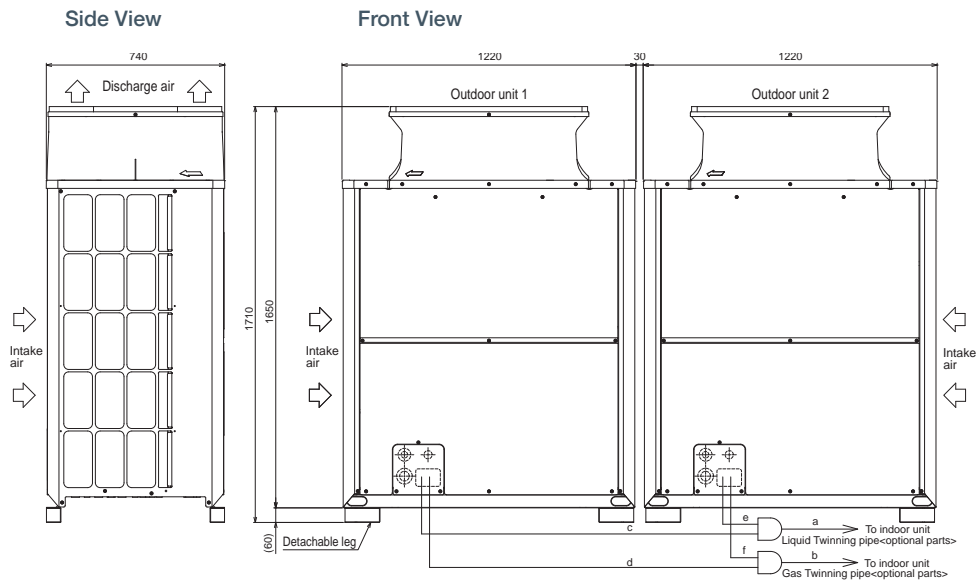
Product Dimensions

PUHY-P550/600YSKB-A1



Product Dimensions

PUHY-P650/700/750YSKB-A1



# Y Series Standard (32-36hp)

## Heat Pump Outdoor Unit



## Setting the standard in efficiency

The City Multi Y Series makes use of a two pipe refrigerant circuit throughout, with branch pipes feeding indoor units, allowing manual changeover from cooling to heating to ensure that a constant indoor climate is maintained.

### Key Features

- Designed from day 1 for seasonal efficiency
- New energy-saving inverter driven outdoor compressor with very low start currents
- Improved flow distribution of the refrigerant circuit and redesigned bellmouth grille to minimise power input
- Reduced standby power by up to 50% using induction heated compressor
- Automated dynamic control of refrigerant evaporating temperature based on internal load, provides added comfort whilst improving seasonal efficiency
- Increase and fix system evaporating temperature to enable increased indoor unit SHF, air off temperature conditions and therefore efficiency and comfort
- Compact chassis for easier installation - no requirement for plant rooms or bulky service shafts
- The choice to either provide standard reverse defrost or can continue to provide indoor units heat during the defrost cycle by utilising hot gas defrost technology
- Reduced refrigerant volume – ideal for compliance with EN378 and for help with BREEAM points



OUTDOOR UNITS	PUHY-P800YSKB-A1	PUHY-P850YSKB-A1	PUHY-P900YSKB-A1
CAPACITY (kW)			
Heating (nominal)	100.0	108.0	113.0
Cooling (nominal)	90.0	96.0	101.0
High Performance Heating (UK)	100.0	102.6	107.4
COP Priority Heating (UK)	87.0	95.0	99.4
Cooling (UK)	78.2	85.2	89.6
POWER INPUT (kW)			
Heating (nominal)	27.62	29.90	33.00
Cooling (nominal)	27.86	30.18	31.46
High Performance Heating (UK)	34.80	39.92	44.06
COP Priority Heating (UK)	25.69	27.21	30.03
Cooling (UK)	17.97	18.41	19.19
COP / EER (nominal)	3.62 / 3.23	3.61 / 3.18	3.42 / 3.21
SCOP / SEER (system)	- / -	- / -	- / -
MAX No. OF CONNECTABLE INDOOR UNITS	50	50	50
MAX CONNECTABLE CAPACITY	50-130% OU Capacity	50-130% OU Capacity	50-130% OU Capacity
AIRFLOW (m <sup>3</sup> /min)	High 360 / 210	360 / 210	360 / 360
PIPE SIZE mm (in)	Gas 34.93 (1-3/8")	41.28 (1-5/8")	41.28 (1-5/8")
	Liquid 19.05 (3/4")	19.05 (3/4")	19.05 (3/4")
SOUND PRESSURE LEVEL (dBA)	67.5	68	69
SOUND POWER LEVEL (dBA)	87.5	87.5	88
WEIGHT (kg)	304 + 251	304 + 251	304 + 304
DIMENSIONS (mm)	Width 1750 + 1220	1750 + 1220	1750 + 1750
	Depth 740	740	740
(1650mm without legs)	Height 1710	1710	1710
ELECTRICAL SUPPLY*	380-415v, 50Hz	380-415v, 50Hz	380-415v, 50Hz
PHASE*	Three	Three	Three
STARTING CURRENT (A)*	8 / 8	8 / 8	8 / 8
NOMINAL SYSTEM RUNNING CURRENT (A)* Heating/Cooling [MAX]	44.2 / 44.6 [37.8+28.2]	47.9 / 48.4 [37.8+32.7]	52.9 / 50.4 [37.8+37.8]
GUARANTEED OPERATING RANGE (°C) Heating / Cooling	-20-15.5 / -5-52	-20-15.5 / -5-52	-20-15.5 / -5-52
FUSE RATING (MCB sizes BS EN 60947-2) - (A)*	1 x 40 / 1 x 32	1 x 40 / 1 x 40	1 x 40 / 1 x 40
MAINS CABLE No. Cores*	4 + earth	4 + earth	4 + earth

**Note:** \* A separate power supply is required for each module. Where more than one figure is quoted there are multiple modules. Price includes Twinning Kit where necessary.

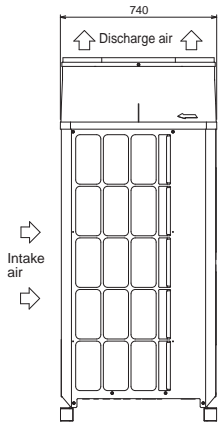
PIPING RESTRICTIONS	PUHY-P800-900YSKB-A1
TOTAL PIPING LENGTH	1000m max
FURTHEST PIPING LENGTH	165m max
FURTHEST PIPING LENGTH AFTER 1st BRANCH	40m <sup>1</sup> max
BETWEEN INDOOR AND OUTDOOR UNITS - HEIGHT	50m max (40m max if outdoor installed below)
BETWEEN INDOOR AND INDOOR UNITS - HEIGHT	15m <sup>2</sup> max

**Notes:** <sup>1</sup> 90m is available. When the piping length is 40m or longer, use the one size larger liquid pipe between the first joint all the way to all indoor units greater than 40m from first joint.  
<sup>2</sup> 30m is available. When the piping length is 15m or longer, use the one size larger liquid pipe between the first joint all the way to all indoor units greater than 15m from first joint.

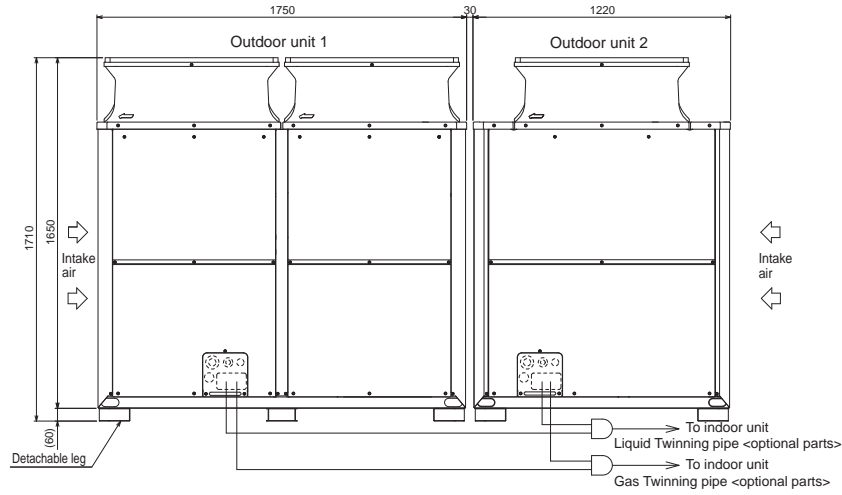
Product Dimensions

PUHY-P800/850YSKB-A1

Side View



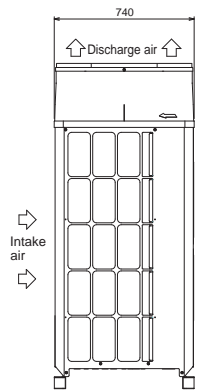
Front View



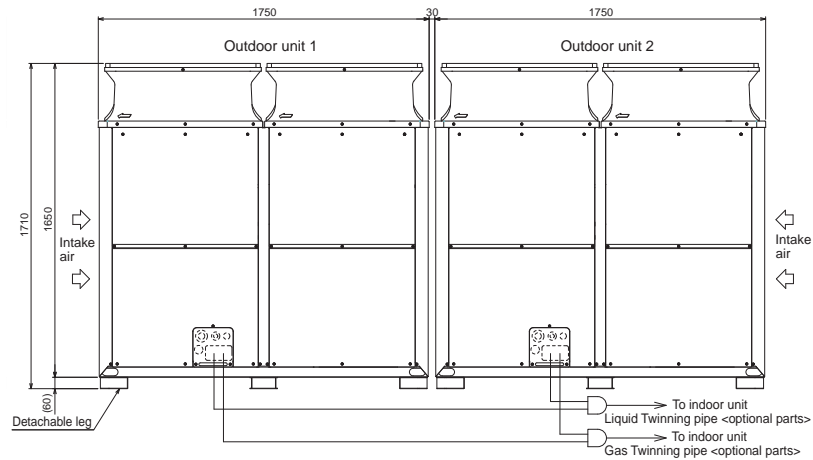
Product Dimensions

PUHY-P900YSKB-A1

Side View



Front View



# Y Series Standard (38-44hp)

## Heat Pump Outdoor Unit

### Setting the standard in efficiency

The City Multi Y Series makes use of a two pipe refrigerant circuit throughout, with branch pipes feeding indoor units, allowing manual changeover from cooling to heating to ensure that a constant indoor climate is maintained.

#### Key Features

- Designed from day 1 for seasonal efficiency
- New energy-saving inverter driven outdoor compressor with very low start currents
- Improved flow distribution of the refrigerant circuit and redesigned bellmouth grille to minimise power input
- Reduced standby power by up to 50% using induction heated compressor
- Automated dynamic control of refrigerant evaporating temperature based on internal load, provides added comfort whilst improving seasonal efficiency
- Increase and fix system evaporating temperature to enable increased indoor unit SHF, air off temperature conditions and therefore efficiency and comfort
- Compact chassis for easier installation - no requirement for plant rooms or bulky service shafts
- The choice to either provide standard reverse defrost or can continue to provide indoor units heat during the defrost cycle by utilising hot gas defrost technology
- Reduced refrigerant volume – ideal for compliance with EN378 and for help with BREEAM points



OUTDOOR UNITS		PUHY-P950YSKB-A1	PUHY-P1000YSKB-A1	PUHY-P1050YSKB-A1	PUHY-P1100YSKB-A1
CAPACITY (kW)	Heating (nominal)	119.5	127.0	132.0	140.0
	Cooling (nominal)	108.0	113.0	118.0	124.0
	High Performance Heating (UK)	113.5	120.7	125.4	133.0
	COP Priority Heating (UK)	105.2	111.8	116.2	123.2
	Cooling (UK)	95.9	100.3	104.7	110.0
POWER INPUT (kW)	Heating (nominal)	30.40	32.70	34.25	36.60
	Cooling (nominal)	30.25	32.10	35.01	38.62
	High Performance Heating (UK)	40.58	43.65	45.72	48.86
	COP Priority Heating (UK)	27.66	29.76	31.17	33.31
	Cooling (UK)	18.45	19.58	21.36	23.56
COP / EER (nominal)	3.93 / 3.57	3.88 / 3.52	3.85 / 3.37	3.82 / 3.21	
SCOP / SEER (system)	- / -	- / -	- / -	- / -	
MAX No. OF CONNECTABLE INDOOR UNITS	50	50	50	50	
MAX CONNECTABLE CAPACITY	50-130% OU Capacity	50-130% OU Capacity	50-130% OU Capacity	50-130% OU Capacity	
AIRFLOW (m <sup>3</sup> /min)	High	210 / 210 / 175	210 / 210 / 210	210 / 210 / 210	210 / 210 / 210
	Low	175 / 175 / 140	175 / 175 / 175	175 / 175 / 175	175 / 175 / 175
PIPE SIZE mm (in)	Gas	41.28 (1-5/8")	41.28 (1-5/8")	41.28 (1-5/8")	41.28 (1-5/8")
	Liquid	19.05 (3/4")	19.05 (3/4")	19.05 (3/4")	19.05 (3/4")
SOUND PRESSURE LEVEL (dBA)		66.5	66.5	66.5	66.5
SOUND POWER LEVEL (dBA)		87	88	88	88
WEIGHT (kg)		251 + 251 + 199	251 + 251 + 251	251 + 251 + 251	251 + 251 + 251
DIMENSIONS (mm)	Width	1220 + 1220 + 920	1220 + 1220 + 1220	1220 + 1220 + 1220	1220 + 1220 + 1220
	Depth	740	740	740	740
	Height	1710	1710	1710	1710
(1650mm without legs)					
ELECTRICAL SUPPLY*		380-415v, 50Hz	380-415v, 50Hz	380-415v, 50Hz	380-415v, 50Hz
PHASE*		Three	Three	Three	Three
STARTING CURRENT (A)*		8 / 8 / 8	8 / 8 / 8	8 / 8 / 8	8 / 8 / 8
NOMINAL SYSTEM RUNNING CURRENT (A)* Heating/Cooling [MAX]		48.7 / 48.5 [32.7+22.1+17.8]	52.4 / 51.4 [32.7+22.1+22.1]	54.9 / 56.1 [32.7+28.2+22.1]	58.6 / 61.9 [32.7+28.2+28.2]
GUARANTEED OPERATING RANGE (°C) Heating / Cooling		-20 -15.5 / -5-52	-20-15.5 / -5-52	-20-15.5 / -5-52	-20-15.5 / -5-52
FUSE RATING (MCB sizes BS EN 60947-2) - (A)*		1 x 40 / 1 x 25 / 1 x 20	1 x 40 / 1 x 25 / 1 x 25	1 x 40 / 1 x 32 / 1 x 25	1 x 40 / 1 x 32 / 1 x 32
MAINS CABLE No. Cores*		4 + earth	4 + earth	4 + earth	4 + earth

**Note:** \* A separate power supply is required for each module. Where more than one figure is quoted there are multiple modules. Price includes Twinning Kit where necessary.

PIPING RESTRICTIONS	PUHY-P950-1100YSKB-A1
TOTAL PIPING LENGTH	1000m max
FURTHEST PIPING LENGTH	165m max
FURTHEST PIPING LENGTH AFTER 1st BRANCH	40m <sup>1</sup> max
BETWEEN INDOOR AND OUTDOOR UNITS - HEIGHT	50m max (40m max if outdoor installed below)
BETWEEN INDOOR AND INDOOR UNITS - HEIGHT	15m <sup>2</sup> max

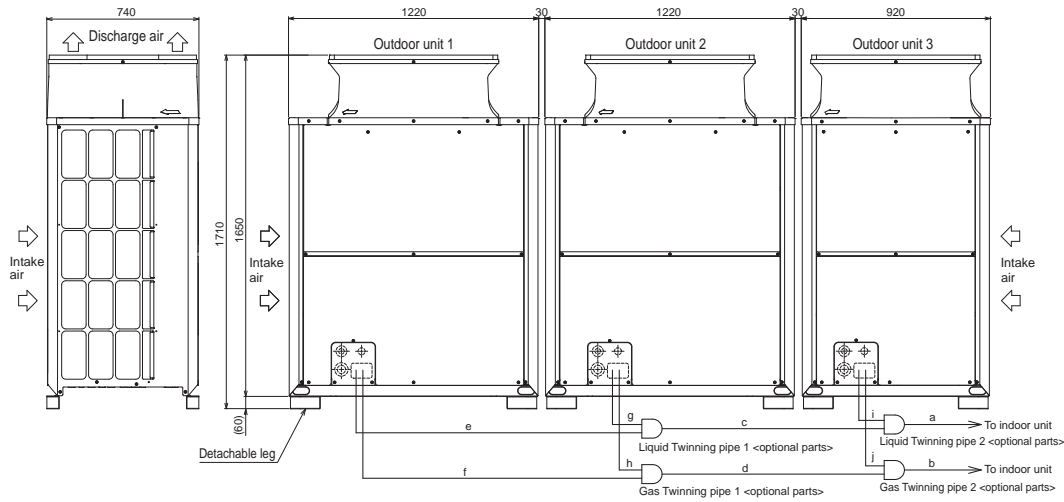
**Notes:** <sup>1</sup> 90m is available. When the piping length is 40m or longer, use the one size larger liquid pipe between the first joint all the way to all indoor units greater than 40m from first joint.  
<sup>2</sup> 30m is available. When the piping length is 15m or longer, use the one size larger liquid pipe between the first joint all the way to all indoor units greater than 15m from first joint.

Product Dimensions

PUHY-P950YSKB-A1

Side View

Front View

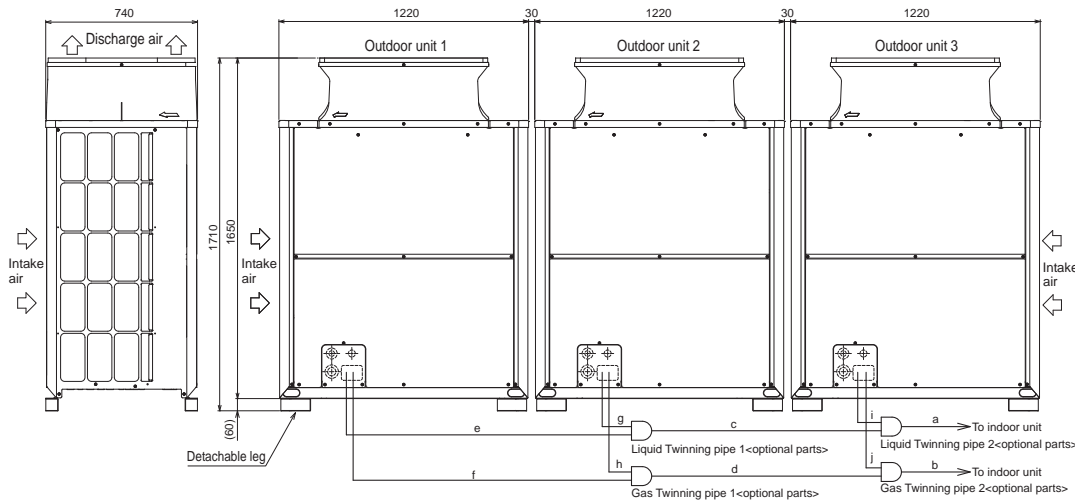


Product Dimensions

PUHY-P1000/1050/1100YSKB-A1

Side View

Front View





# Y Series Standard (46-50hp)

## Heat Pump Outdoor Unit



## Setting the standard in efficiency

The City Multi Y Series makes use of a two pipe refrigerant circuit throughout, with branch pipes feeding indoor units, allowing manual changeover from cooling to heating to ensure that a constant indoor climate is maintained.

### Key Features

- Designed from day 1 for seasonal efficiency
- New energy-saving inverter driven outdoor compressor with very low start currents
- Improved flow distribution of the refrigerant circuit and redesigned bellmouth grille to minimise power input
- Reduced standby power by up to 50% using induction heated compressor
- Automated dynamic control of refrigerant evaporating temperature based on internal load, provides added comfort whilst improving seasonal efficiency
- Increase and fix system evaporating temperature to enable increased indoor unit SHF, air off temperature conditions and therefore efficiency and comfort
- Compact chassis for easier installation - no requirement for plant rooms or bulky service shafts
- The choice to either provide standard reverse defrost or can continue to provide indoor units heat during the defrost cycle by utilising hot gas defrost technology
- Reduced refrigerant volume – ideal for compliance with EN378 and for help with BREEAM points



OUTDOOR UNITS		PUHY-P1150YSKB-A1	PUHY-P1200YSKB-A1	PUHY-P1250YSKB-A1
CAPACITY (kW)	Heating (nominal)	145.0	150.0	156.5
	Cooling (nominal)	130.0	136.0	140.0
	High Performance Heating (UK)	137.8	142.5	148.7
	COP Priority Heating (UK)	127.6	132.0	137.7
	Cooling (UK)	115.4	120.7	124.3
POWER INPUT (kW)	Heating (nominal)	39.29	40.76	44.08
	Cooling (nominal)	40.27	44.10	43.80
	High Performance Heating (UK)	52.45	54.41	58.85
	COP Priority Heating (UK)	35.75	37.09	40.11
	Cooling (UK)	24.55	26.90	26.72
COP / EER (nominal)		3.69 / 3.23	3.68 / 3.08	3.55 / 3.19
SCOP / SEER (system)		- / -	- / -	- / -
MAX No. OF CONNECTABLE INDOOR UNITS		50	50	50
MAX CONNECTABLE CAPACITY		50-130% OU Capacity	50-130% OU Capacity	50-130% OU Capacity
AIRFLOW (m <sup>3</sup> /min)	High	360 / 210 / 210	360 / 210 / 210	360 / 360 / 210
	Gas	41.28 (1-5/8")	41.28 (1-5/8")	41.28 (1-5/8")
PIPE SIZE mm (in)	Liquid	19.05 (3/4")	19.05 (3/4")	19.05 (3/4")
SOUND PRESSURE LEVEL (dBA)		68.5	69	70
SOUND POWER LEVEL (dBA)		88.5	88.5	89.5
WEIGHT (kg)		304 + 251 + 251	304 + 251 + 251	304 + 304 + 251
DIMENSIONS (mm)	Width	1750 + 1220 + 1220	1750 + 1220 + 1220	1750 + 1750 + 1220
	Depth	740	740	740
	Height	1710	1710	1710
(1650mm without legs)				
ELECTRICAL SUPPLY*		380-415v, 50Hz	380-415v, 50Hz	380-415v, 50Hz
PHASE*		Three	Three	Three
STARTING CURRENT (A)*		8 / 8 / 8	8 / 8 / 8	8 / 8 / 8
NOMINAL SYSTEM RUNNING CURRENT (A)* Heating/Cooling [MAX]		63.0 / 64.5 [37.8+28.2+28.2]	65.3 / 70.7 [37.8+32.7+28.2]	70.6 / 70.2 [37.8+37.8+28.2]
GUARANTEED OPERATING RANGE (°C) Heating / Cooling		-20-15.5 / -5-52	-20-15.5 / -5-52	-20-15.5 / -5-52
FUSE RATING (MCB sizes BS EN 60947-2) - (A)*		1 x 40 / 1 x 32 / 1 x 32	1 x 40 / 1 x 40 / 1 x 32	1 x 40 / 1 x 40 / 1 x 32
MAINS CABLE No. Cores*		4 + earth	4 + earth	4 + earth

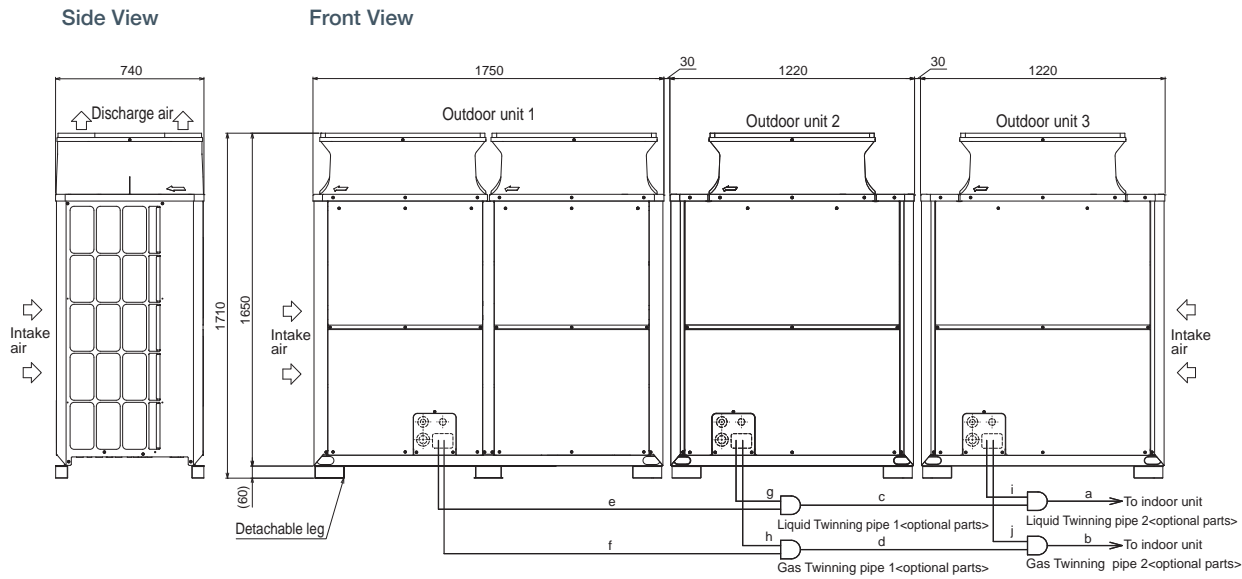
**Note:** \* A separate power supply is required for each module. Where more than one figure is quoted there are multiple modules. Price includes Twinning Kit where necessary.

PIPING RESTRICTIONS	PUHY-P1150-1250YSKB-A1
TOTAL PIPING LENGTH	1000m max
FURTHEST PIPING LENGTH	165m max
FURTHEST PIPING LENGTH AFTER 1st BRANCH	40m <sup>1</sup> max
BETWEEN INDOOR AND OUTDOOR UNITS - HEIGHT	50m max (40m max if outdoor installed below)
BETWEEN INDOOR AND INDOOR UNITS - HEIGHT	15m <sup>2</sup> max

**Notes:** <sup>1</sup> 90m is available. When the piping length is 40m or longer, use the one size larger liquid pipe between the first joint all the way to all indoor units greater than 40m from first joint.  
<sup>2</sup> 30m is available. When the piping length is 15m or longer, use the one size larger liquid pipe between the first joint all the way to all indoor units greater than 15m from first joint.

Product Dimensions

PUHY-P1150/1200YSKB-A1



Product Dimensions

PUHY-P1250YSKB-A1

