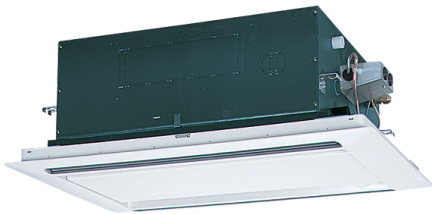


# Air Conditioning

## Product Information

### PLFY-P25VLMD-E : Indoor Unit

2-Way Blow Ceiling Cassette



The PLFY-P-VLMD-E cassette unit fits into the space in a suspended ceiling to provide heating or cooling. This new unit has been redesigned with lower unit height and lower noise levels.

## FEATURES



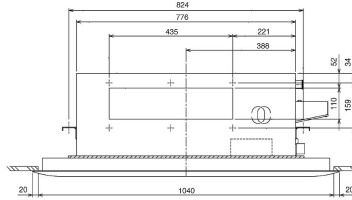
### INDOOR

Heating Capacity (kW) (nominal)	3.2
Cooling Capacity (kW) (nominal)	2.8
High Performance Heating Capacity (kW) (UK)	3.2
COP Priority Heating Capacity (kW) (UK)	3
Cooling Capacity (kW) (UK)	2.7
Cooling Capacity (Hi-Sens Mode) (kW) (UK)	2
SHF (UK)	0.78
SHF (Hi-Sens Mode) (UK)	0.9
Heating Power Input (kW) (nominal)	0.065
Cooling Power Input (kW) (nominal)	0.072
Airflow (m <sup>3</sup> /min) - Lo-Mi-Hi	6.5 - 8 - 9.5
Sound Pressure Level (dBA) - Lo-Mi-Hi	27 - 30 - 33
Weight (kg) (Grille)	23 (6.5)
Dimensions (mm) Width (Grille)	776 (1080)
Dimensions (mm) Depth (Grille)	634 (710)
Dimensions (mm) Height (Grille)	290 (20)
Electrical Supply	220-240V, 50HZ
Phase	SINGLE
Running Current (A) - Heating / Cooling	0.3 / 0.36
Fuse Rating (BS88) - HRC (A)	6
Mains Cable No. Cores	3
Grille Model Reference	CMP-40VLW-C

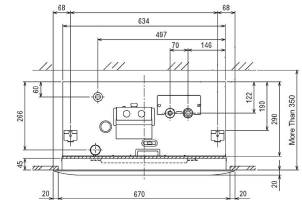
### DIMENSIONS

PLFY-P25VLM-D-E

Front View >



Side View >



Lower View >

