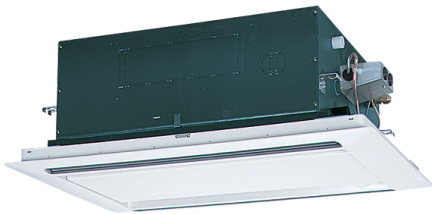


Air Conditioning

Product Information

PLFY-P100VLMD-E : Indoor Unit

2-Way Blow Ceiling Cassette



The PLFY-P-VLMD-E cassette unit fits into the space in a suspended ceiling to provide heating or cooling. This new unit has been redesigned with lower unit height and lower noise levels.

FEATURES



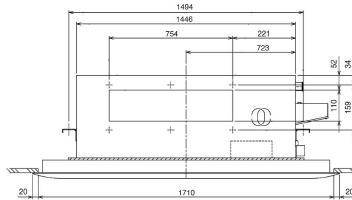
INDOOR

Heating Capacity (kW) (nominal)	12.5
Cooling Capacity (kW) (nominal)	11.2
High Performance Heating Capacity (kW) (UK)	12.5
COP Priority Heating Capacity (kW) (UK)	11.7
Cooling Capacity (kW) (UK)	10.6
Cooling Capacity (Hi-Sens Mode) (kW) (UK)	8.1
SHF (UK)	0.73
SHF (Hi-Sens Mode) (UK)	0.79
Heating Power Input (kW) (nominal)	0.15
Cooling Power Input (kW) (nominal)	0.157
Airflow (m ³ /min) - Lo-Mi-Hi	17.5 - 21 - 25
Sound Pressure Level (dBA) - Lo-Mi-Hi	36 - 39 - 42
Weight (kg) (Grille)	47 (12.5)
Dimensions (mm) Width (Grille)	1446 (1750)
Dimensions (mm) Depth (Grille)	634 (710)
Dimensions (mm) Height (Grille)	290 (20)
Electrical Supply	220-240V, 50HZ
Phase	SINGLE
Running Current (A) - Heating / Cooling	0.69 / 0.75
Fuse Rating (BS88) - HRC (A)	6
Mains Cable No. Cores	3
Grille Model Reference	CMP-100VLW-C

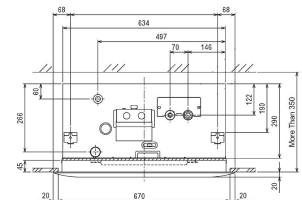
DIMENSIONS

PLFY-P100VLM-D-E

Front View >



Side View >



Lower View >

