

PLFY-P-VLMD-E

PLFY-P-VLMD-E

1. SPECIFICATIONS	IU-D- 2
2. EXTERNAL DIMENSIONS	IU-D- 4
3. ELECTRICAL WIRING DIAGRAMS	IU-D- 7
4. SOUND LEVELS	
4-1. Sound levels	IU-D- 9
4-2. NC curves	IU-D- 9
4-3. OA Intake-static pressure curves	IU-D- 11
4-4. Branch duct Discharge-static pressure curves	IU-D- 11
5. TEMPERATURE/AIRFLOW DISTRIBUTIONS	
5-1. Temperature distributions	IU-D- 12
5-2. Airflow distributions	IU-D- 12
6. Optional parts for PLFY-P-VLMD-E	IU-D- 13

- A
- B
- C
- D**
- E
- F
- G
- H
- V_a
- V_b
- BC
- CT

Cassette ceiling	P20	P25	P32	P40	P50	P63	P71	P80	P100	P125	P140	P200	P250
	0.8HP	1.0HP	1.3HP	1.6HP	2.0HP	2.5HP	2.8HP	3.2HP	4.0HP	5.0HP	5.6HP	8.0HP	10.0HP
PLFY-P-VLMD-E	●	●	●	●	●	●		●	●	●			

1. SPECIFICATIONS

R410A Data G4

Model		PLFY-P20VLMD-E	PLFY-P25VLMD-E	PLFY-P32VLMD-E	PLFY-P40VLMD-E	
Power source		1-phase 220-240V 50Hz, 1-phase 220-230V 60Hz				
Cooling capacity (Nominal)	*1 kW	2.2	2.8	3.6	4.5	
	*1 kcal / h	1,900	2,400	3,100	3,900	
	*1 Btu / h	7,500	9,600	12,300	15,400	
	*2 kcal / h	2,000	2,500	3,150	4,000	
	Power input	kW	0.072 / 0.075	0.072 / 0.075	0.072 / 0.075	0.081 / 0.085
	Current input	A	0.36 / 0.37	0.36 / 0.37	0.36 / 0.37	0.40 / 0.42
Heating capacity (Nominal)	*3 kW	2.5	3.2	4.0	5.0	
	*3 kcal / h	2,200	2,800	3,400	4,300	
	*3 Btu / h	8,500	10,900	13,600	17,100	
	Power input	kW	0.065 / 0.069	0.065 / 0.069	0.065 / 0.069	0.074 / 0.079
	Current input	A	0.30 / 0.32	0.30 / 0.32	0.30 / 0.32	0.34 / 0.37
External finish		Unit : Galvanized				
External dimension H x W x D		mm 290 x 776 x 634		mm 290 x 776 x 634		
		in. 11-7/16" x 30-9/16" x 25"		in. 11-7/16" x 30-9/16" x 25"		
Net weight		kg (lb)	23 (51)	23 (51)	24 (53)	24 (53)
Decoration panel	Model	CMP-40VLW-B		CMP-40VLW-B		
	External finish	ABS, MUNSELL (0.7Y 8.59/0.97), include Service Panel : Galvanized, MUNSELL (0.7Y 8.59/0.97)				
	Dimension	mm 20 x 1,080 x 710				
	H x W x D	in. 13/16" x 30-9/16" x 28"				
	Net Weight	kg (lb) 6.5 (15)				
Heat exchanger		Cross fin				
FAN	Type x Quantity		Turbo fan x 1	Turbo fan x 1	Turbo fan x 1	Turbo fan x 1
	External static press.	Pa	0	0	0	0
		mmH ₂ O	0	0	0	0
	Motor type		1-phase induction motor			
	Motor output	kW	0.015 (at 240V)	0.015 (at 240V)	0.015 (at 240V)	0.015 (at 240V)
	Driving mechanism		Direct-driven by motor			
	Airflow rate (Low-Mid-High)	m ³ / min	6.5 - 8.0 - 9.5	6.5 - 8.0 - 9.5	6.5 - 8.0 - 9.5	7.0 - 8.5 - 10.5
		L / s	108 - 133 - 158	108 - 133 - 158	108 - 133 - 158	117 - 142 - 175
cfm		230 - 283 - 335	230 - 283 - 335	230 - 283 - 335	247 - 300 - 371	
Noise level (Low-Mid-High) (measured in anechoic room)	dB <A>	27 - 30 - 33 (220, 240V)	27 - 30 - 33 (220,240V)	27 - 30 - 33 (220,240V)	29 - 33 - 36 (220,240V)	
	dB <A>	28 - 31 - 34 (230V)	28 - 31 - 34 (230V)	28 - 31 - 34 (230V)	30 - 34 - 37 (230V)	
Insulation material		Polystyrene foam, Polyethylene foam, Urethane foam				
Air filter		PP honeycomb fabric (long life filter)				
Protection device		Fuse				
Refrigerant control device		LEV				
Connectable outdoor unit		R410A, R407C, R22 CITY MULTI				
Diameter of refrigerant pipe	Liquid (R410A) (R22, R407C)	mm (in.)	ø6.35 (ø1/4") Flare ø6.35 (ø1/4") Flare	ø6.35 (ø1/4") Flare ø6.35 (ø1/4") Flare	ø6.35 (ø1/4") Flare ø6.35 (ø1/4") Flare	ø6.35 (ø1/4") Flare ø6.35 (ø1/4") Flare
	Gas (R410A) (R22, R407C)	mm (in.)	ø12.7 (ø1/2") Flare ø12.7 (ø1/2") Flare	ø12.7 (ø1/2") Flare ø12.7 (ø1/2") Flare	ø12.7 (ø1/2") Flare ø12.7 (ø1/2") Flare	ø12.7 (ø1/2") Flare ø12.7 (ø1/2") Flare
Field drain pipe size		mm (in.)	O.D. 32mm (1-1/4")			
Drawing	External	IU-W275-920				
	Wiring	IU-W653-952				
	Refrigerant cycle	-				
Standard attachment	Document	Installation Manual, Instruction Book				
	Accessory	Drain hose I.D. 32mm (1-1/4") (flexible joint)				
Remark	Optional parts					
	Decoration panel	CMP-40VLW-B	CMP-40VLW-B	CMP-40VLW-B	CMP-40VLW-B	
	OA duct flange	PAC-KH11OF	PAC-KH11OF	PAC-KH11OF	PAC-KH11OF	
	Installation	Details on foundation work, duct work, insulation work, electrical wiring, power source switch, and other items shall be referred to the Installation Manual.				
Note :	*1 Nominal cooling conditions		*2 Nominal cooling conditions		*3 Nominal heating conditions	
	Indoor :	27° CDB/19° CWB (81° FDB/66° FWB)	27° CDB/19.5° CWB (81° FDB/67° FWB)	20° CDB (68° FDB)		
	Outdoor :	35° CDB (95° FDB)	35° CDB (95° FDB)	7° CDB/6° CWB (45° FDB/43° FWB)		
	Pipe length :	7.5 m (24-9/16 ft)	5 m (16-3/8 ft)	7.5 m (24-9/16 ft)		
	Level difference :	0 m (0 ft)	0 m (0 ft)	0 m (0 ft)		
					Unit converter	
					kcal/h = kW x 860	
					Btu/h = kW x 3,412	
					cfm = m ³ /min x 35.31	
					lb = kg / 0.4536	
* Nominal conditions *1, *3 are subject to JIS B8615-1.					*Above specification data is subject to rounding variation.	
* Due to continuing improvement, above specification may be subject to change without notice.						

Ref.: Spec_PLFY-P20VLMD-E_1

1. SPECIFICATIONS

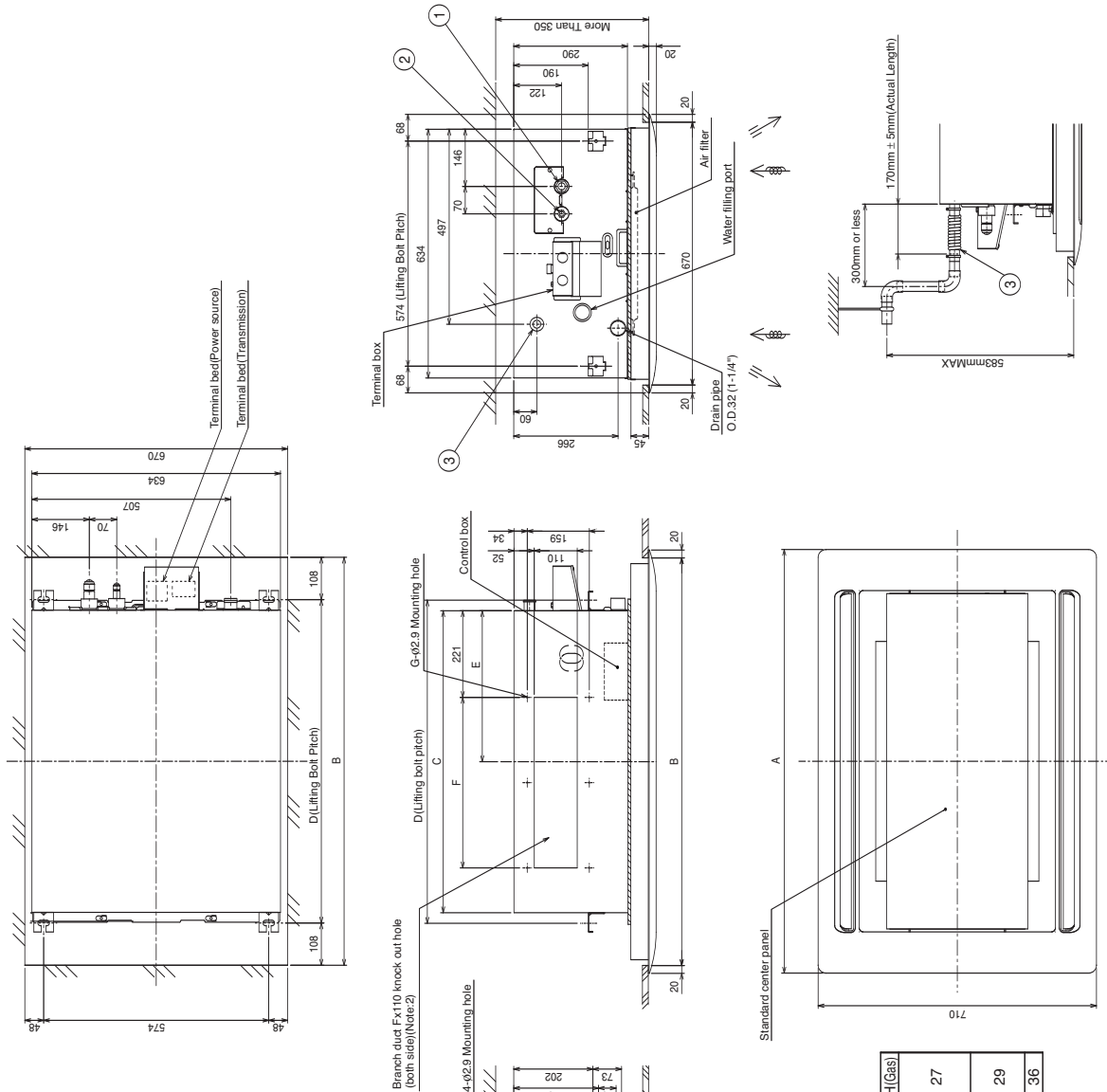
R410A Data G4

Model			PLFY-P50VLMD-E	PLFY-P63VLMD-E	PLFY-P80VLMD-E	PLFY-P100VLMD-E	PLFY-P125VLMD-E	
Power source			1-phase 220-240V 50Hz, 1-phase 220-230V 60Hz					
Cooling capacity (Nominal)	*1	kW	5.6	7.1	9.0	11.2	14.0	
		kcal / h	4,800	6,100	7,700	9,600	12,000	
		Btu / h	19,100	24,200	30,700	38,200	47,800	
	*2	kcal / h	5,000	6,300	8,000	10,000	12,500	
		Power input	kW	0.082 / 0.086	0.101 / 0.105	0.147 / 0.156	0.157 / 0.186	0.28 / 0.28
Current input		A	0.41 / 0.43	0.49 / 0.51	0.72 / 0.74	0.75 / 0.88	1.35 / 1.35	
Heating capacity (Nominal)	*3	kW	6.3	8.0	10.0	12.5	16.0	
		kcal / h	5,400	6,900	8,600	10,800	13,800	
		Btu / h	21,500	27,300	34,100	42,700	54,600	
	Power input	kW	0.075 / 0.080	0.094 / 0.099	0.140 / 0.150	0.150 / 0.180	0.27 / 0.27	
		Current input	A	0.35 / 0.38	0.43 / 0.46	0.66 / 0.69	0.69 / 0.83	1.33 / 1.33
External finish			Unit : Galvanized					
External dimension H x W x D		mm	290 x 946 x 634		290 x 1,446 x 634		290 x 1,708 x 606	
		in.	11-7/16" x 37-1/4" x 25"		11-7/16" x 56-15/16" x 25"		11-7/16" x 67-1/4" x 23-7/8"	
Net weight		kg (lb)	27 (60)	28 (62)	44 (98)	47 (104)	56 (124)	
Decoration panel	Model		CMP-63VLW-B	CMP-63VLW-B	CMP-100VLW-B	CMP-100VLW-B	CMP-125VLW-B	
	External finish		ABS, MUNSELL (0.7Y 8.59/0.97), include Service Panel : Galvanized, MUNSELL (0.7Y 8.59/0.97)					
	Dimension	mm	20 x 1,250 x 710		20 x 1,750 x 710		20 x 2,010 x 710	
		in.	13/16" x 49-1/4" x 28"		13/16" x 56-15/16" x 28"		13/16" x 67-1/4" x 28"	
	Net Weight		kg (lb)	7.5 (17)		12.5 (28)		13.0 (29)
Heat exchanger			Cross fin					
FAN	Type x Quantity		Turbo fan x 1	Turbo fan x 1	Turbo fan x 2	Turbo fan x 2	Sirocco fan x 4	
	External static press.	Pa	0	0	0	0	0	
		mmH ₂ O	0	0	0	0	0	
	Motor type		1-phase induction motor					
	Motor output		kW	0.020 (at 240V)	0.020 (at 240V)	0.020 (at 240V)	0.030 (at 240V)	0.078 x 2 (at 240V)
	Driving mechanism		Direct-driven by motor					
	Airflow rate (Low-Mid-High)	m ³ / min	9.0 - 11.0 - 12.5	10.0 - 13.0 - 15.5	15.5 - 18.5 - 22.0	17.5 - 21.0 - 25.0	24.0 - 27.0 - 30.0 - 33.0	
L / s		150 - 183 - 208	167 - 217 - 258	258 - 308 - 367	292 - 350 - 417	400 - 450 - 500 - 550		
cfm		318 - 388 - 441	353 - 459 - 547	547 - 653 - 777	618 - 742 - 883	848 - 953 - 1,059 - 1,165		
Noise level (Low-Mid-High) (measured in anechoic room)	dB <A>	31 - 34 - 37 (220, 240V)	32 - 37 - 39 (220, 240V)	33 - 36 - 39 (220, 240V)	36 - 39 - 42 (220, 240V)	40 - 42 - 44 - 46 (220, 240V)		
	dB <A>	32 - 35 - 38 (230V)	33 - 38 - 40 (230V)	34 - 37 - 40 (230V)	37 - 41 - 43 (230V)	40 - 42 - 44 - 46 (230V)		
Insulation material			Polystyrene foam, Polyethylene foam, Urethane foam					
Air filter			PP honeycomb fabric (long life filter)					
Protection device			Fuse					
Refrigerant control device			LEV					
Connectable outdoor unit			R410A, R407C, R22 CITY MULTI					
Diameter of refrigerant pipe	Liquid (R410A) (R22, R407C)	mm (in.)	ø6.35 (ø1/4") Flare	ø9.52 (ø3/8") Flare	ø9.52 (ø3/8") Flare	ø9.52 (ø3/8") Flare	ø9.52 (ø3/8") Flare	
		mm (in.)	ø9.52 (ø3/8") Flare	ø9.52 (ø3/8") Flare	ø9.52 (ø3/8") Flare	ø9.52 (ø3/8") Flare	ø9.52 (ø3/8") Flare	
	Gas (R410A) (R22, R407C)	mm (in.)	ø12.7 (ø1/2") Flare	ø15.88 (ø5/8") Flare	ø15.88 (ø5/8") Flare	ø15.88 (ø5/8") Flare	ø15.88 (ø5/8") Flare	
Field drain pipe size		mm (in.)	O.D. 32mm (1-1/4")					
Drawing	External		IU-W275-920	IU-W275-920	IU-W275-920	IU-W275-920	IU-W275-921	
	Wiring		IU-W653-952	IU-W653-952	IU-W653-952	IU-W653-952	IU-W275-927	
	Refrigerant cycle		-	-	-	-	-	
Standard attachment	Document		Installation Manual, Instruction Book					
	Accessory		Drain hose I.D. 32mm (1-1/4") (flexible joint)					
Remark	Optional parts							
	Decoration panel		CMP-63VLW-B	CMP-63VLW-B	CMP-100VLW-B	CMP-100VLW-B	CMP-125VLW-B	
	OA duct flange		PAC-KH11OF	PAC-KH11OF	PAC-KH11OF	PAC-KH11OF	PAC-KH11OF	
Installation		Details on foundation work, duct work, insulation work, electrical wiring, power source switch, and other items shall be referred to the Installation Manual.						
Note :			*1 Nominal cooling conditions	*2 Nominal cooling conditions	*3 Nominal heating conditions	Unit converter		
Indoor :			27° CDB/19° CWB (81° FDB/66° FWB)	27° CDB/19.5° CWB (81° FDB/67° FWB)	20° CDB (68° FDB)	kcal/h = kW x 860		
Outdoor :			35° CDB (95° FDB)	35° CDB (95° FDB)	7° CDB/6° CWB (45° FDB/43° FWB)	Btu/h = kW x 3,412		
Pipe length :			7.5 m (24-9/16 ft)	5 m (16-3/8 ft)	7.5 m (24-9/16 ft)	cfm = m ³ /min x 35.31		
Level difference :			0 m (0 ft)	0 m (0 ft)	0 m (0 ft)	lb = kg / 0.4536		
* Nominal conditions *1, *3 are subject to JIS B8615-1.							*Above specification data is subject to rounding variation.	
* Due to continuing improvement, above specification may be subject to change without notice.								

Ref.: Spec_PLFY-P20VLMD-E_2

PLFY-P20,25,32,40,50,63,80,100VLMD-E

Drw. : IU-W275-920
Unit : mm

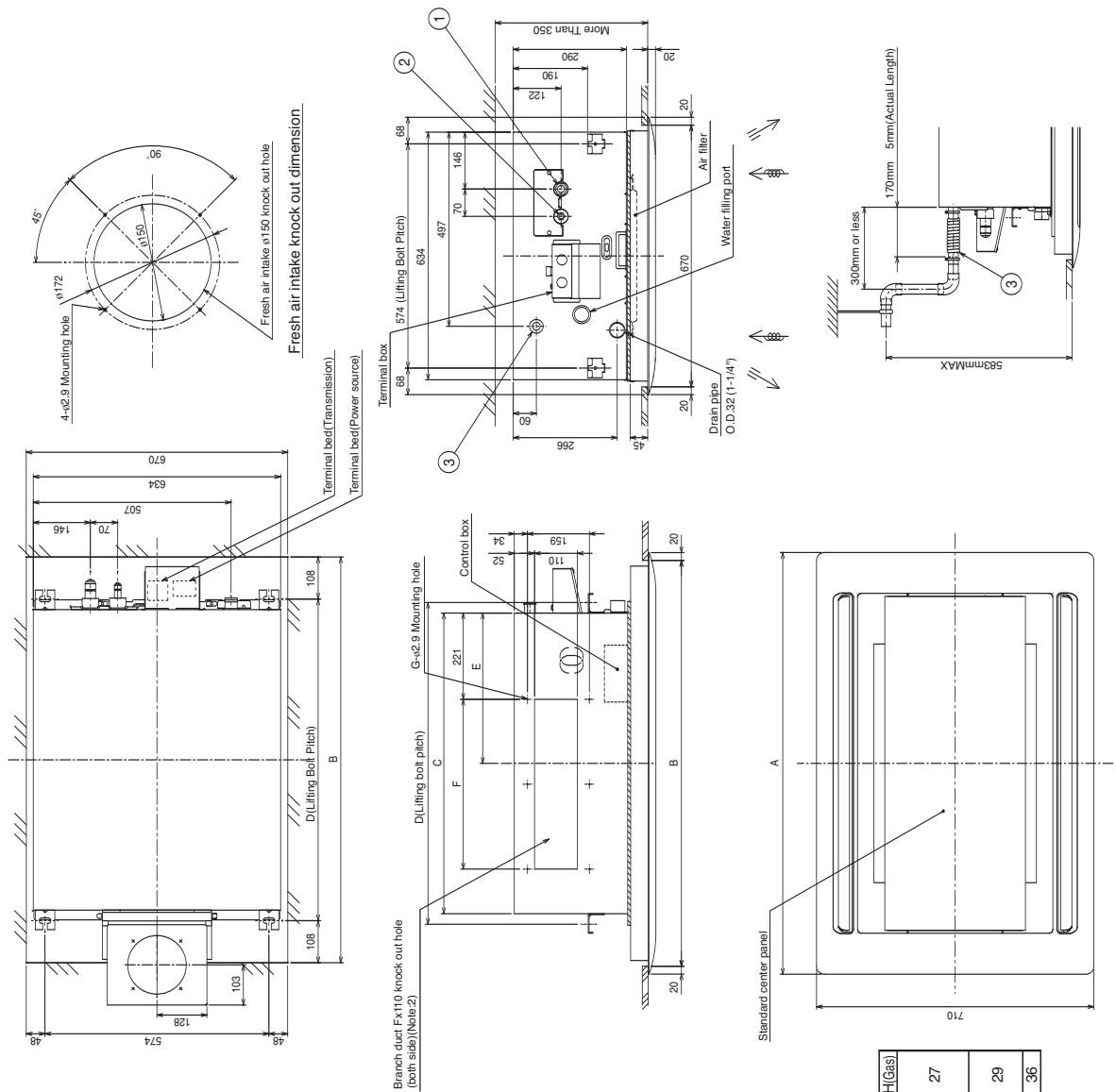


- Note: 1. Use M10 screw for the lifting bolt (field supply).
 2. It is available to connect the branch duct on right and left side both.
 3. On Model :50, 100, you would use flare nut packed with the Indoor Unit, when connecting the Outdoor Unit for R407C, R22.
 4. In order to increase the strength of the flare nut, the size of some of them has been increased.
- | | | |
|-------------|---|----------------------------------|
| <flare> | 1 | 2 |
| Model | Gas pipe | Liquid pipe |
| 20-25-32-40 | φ12.7 | φ6.35 |
| Model | Gas pipe | Liquid pipe |
| 50 | φ12.7<-R410A outdoor unit> | φ15.88<-R407C, R22 outdoor unit> |
| | φ6.35<-R410A outdoor unit> | φ9.52<-R407C, R22 outdoor unit> |
| Model | Gas pipe | Liquid pipe |
| 63-80 | φ15.88 | φ9.52 |
| Model | Gas pipe | Liquid pipe |
| 100 | φ15.88<-R410A outdoor unit> | φ19.05<-R407C, R22 outdoor unit> |
| | φ9.52 | 2 |
| Drain hose | I.D. 32 (1-1/4") <flexible joint> (accessory) | 3 |

Model	A	B	C	D	E	F	G	H(Liquid)	H(Gas)
PLFY-P20VLMD-E	1080	1040	776	824	388	217.5X2	6	17	27
PLFY-P25VLMD-E						=435			
PLFY-P32VLMD-E									
PLFY-P40VLMD-E									
PLFY-P50VLMD-E	1250	1210	946	994	473			22	29
PLFY-P63VLMD-E									
PLFY-P80VLMD-E	1750	1710	1446	1494	723	188.5X4	10	22	36
PLFY-P100VLMD-E						=754			

PLFY-P20,25,32,40,50,63,80,100VLMD-E with OA duct flange

Drw. : IU-W275-920-1
Unit : mm



Note: 1. Use M10 screw for the lifting bolt (field supply).
2. It is available to connect the branch duct on right and left side both.
3. On Model :50, 100, you would use flare nut packed with the Indoor Unit, when connecting the Outdoor Unit for R407C, R22.
4. In order to increase the strength of the flare nut, the size of some of them has been increased.

Model	Gas pipe	Liquid pipe	Gas pipe	Liquid pipe	Gas pipe	Liquid pipe	Gas pipe	Liquid pipe	Drain hose
20-25-32-40	φ12.7	φ6.35	φ12.7<R410A outdoor unit>	φ6.35<R410A outdoor unit>	φ15.88	φ9.52	φ15.88<R410A outdoor unit>	φ9.52<R410A outdoor unit>	I.D. 32 (1-1/4") <flexible joint> (accessory)
50	φ12.7<R410A outdoor unit>	φ6.35<R410A outdoor unit>	φ15.88<R407C,R22 outdoor unit>	φ9.52<R407C,R22 outdoor unit>	φ15.88	φ9.52	φ15.88<R410A outdoor unit>	φ9.52<R410A outdoor unit>	I.D. 32 (1-1/4") <flexible joint> (accessory)
63-80	φ15.88	φ9.52	φ15.88<R410A outdoor unit>	φ9.52<R410A outdoor unit>	φ19.05	φ9.52	φ15.88<R410A outdoor unit>	φ9.52<R410A outdoor unit>	I.D. 32 (1-1/4") <flexible joint> (accessory)
100	φ19.05	φ9.52	φ19.05<R407C,R22 outdoor unit>	φ9.52<R407C,R22 outdoor unit>	φ19.05	φ9.52	φ19.05<R407C,R22 outdoor unit>	φ9.52<R407C,R22 outdoor unit>	I.D. 32 (1-1/4") <flexible joint> (accessory)

Model	A	B	C	D	E	F	G	H(Liquid)	H(Gas)
PLFY-P20VLMD-E	1080	1040	776	824	388	217.5x2	6	17	27
PLFY-P25VLMD-E	1250	1210	946	994	473	≈435		22	29
PLFY-P32VLMD-E	1750	1710	1446	1494	723	188.5x4	10	22	36
PLFY-P40VLMD-E						≈754			

PLFY-P125VLMD-E

Drw. : IU-W275-921
Unit : mm

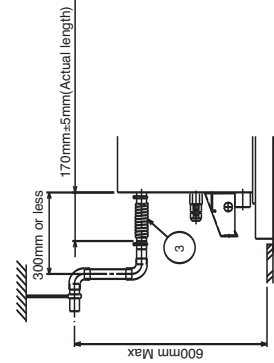
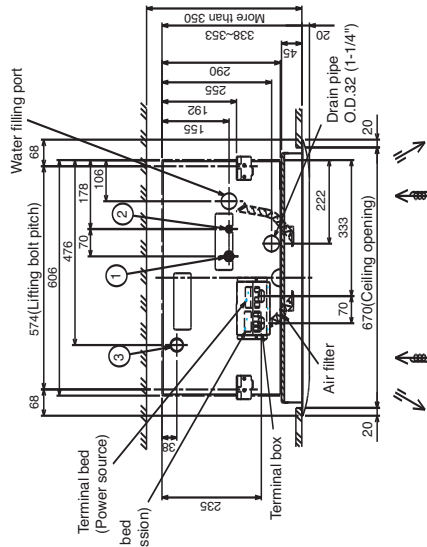
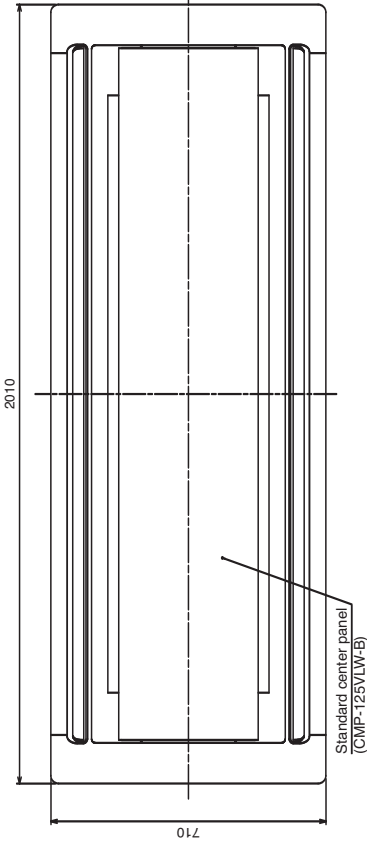
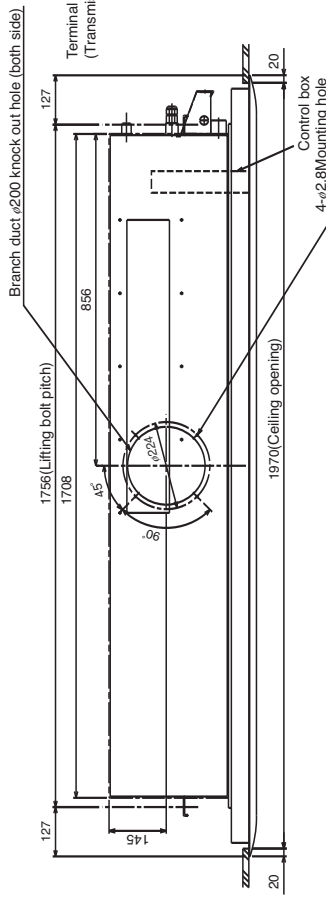
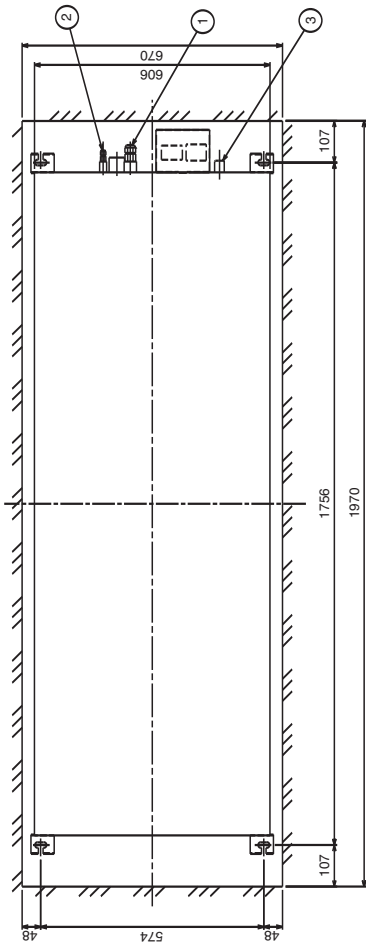
Note: 1. Use M10 screw for the lifting bolt (field supply).
2. On this model, you would use flare nut packed with the Indoor Unit, when connecting the Outdoor Unit for R407C, R22.
3. In order to increase the strength of the flare nut, the size of some of them has been increased.



Model	A(Liquid)	A(Gas)
PLFY-P125VLMD-E	22	36

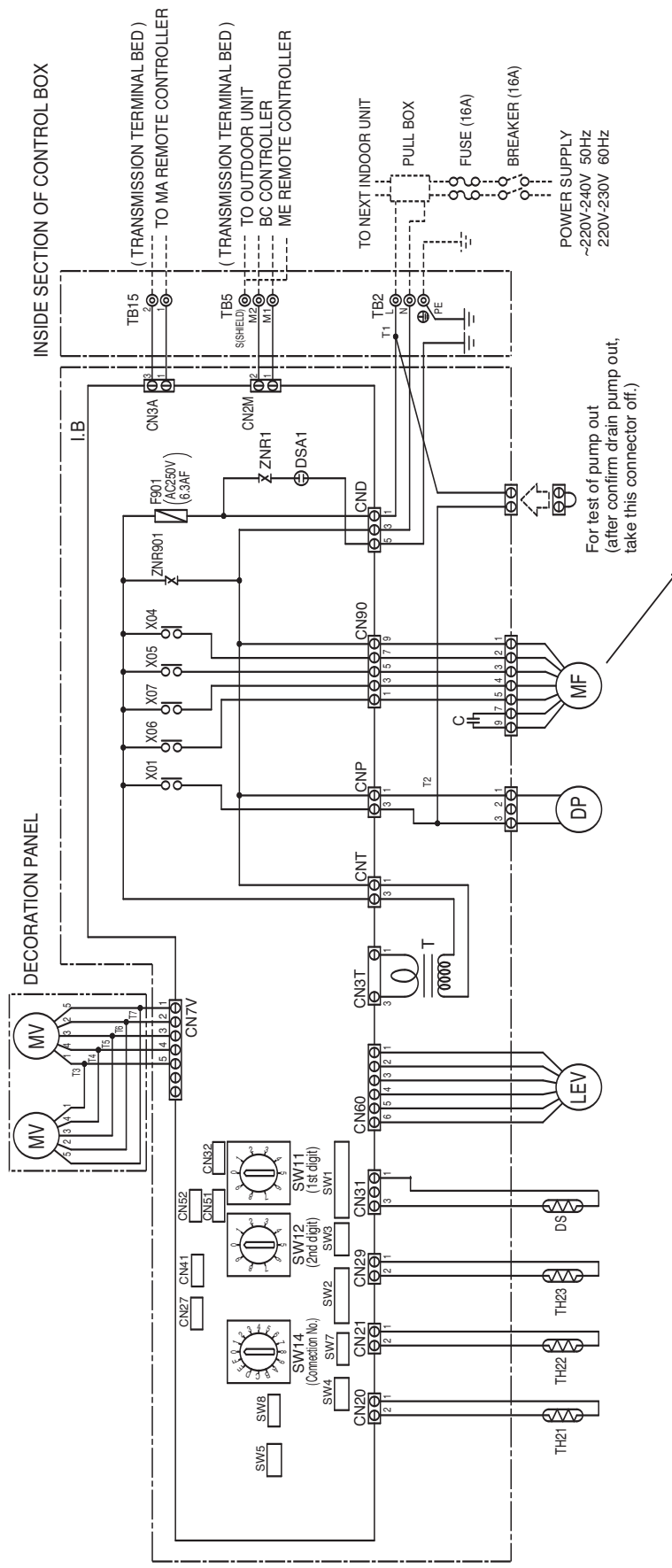
<flares>
 1
 2
 3

Gas pipe #15.88-R410A outdoor unit>
 Liquid pipe #19.05-R407C, R22 outdoor unit>
 Drain hose I.D. 32 (1-1/4") <flexible joint> (accessory)

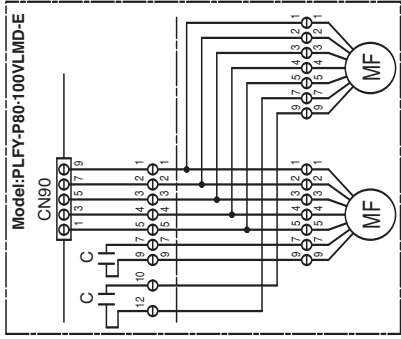


PLFY-P20,25,32,40,50,63,80,100VLM-D-E

Drw. : IU-W653-952



NOTE : 1. TB2, TB5, and TB15 shown in dotted line are field work.
2. Mark ⊙ indicates terminal bed, ⊖ connector, ⊞ board inserting connector of fastening connector of control board.

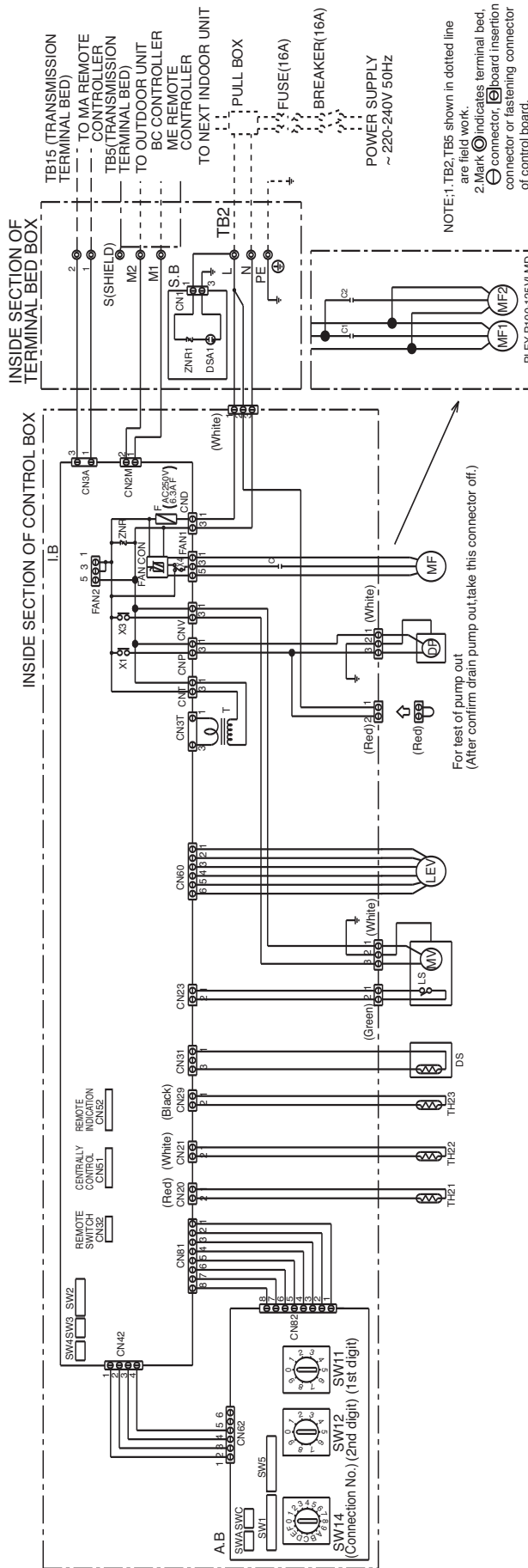


SYMBOL EXPLANATION

SYMBOL	NAME	SYMBOL	NAME	SYMBOL	NAME
MF	Fan motor	CN27	Connector (Damper)	SW11	Switch (1st digit address set)
C	Capacitor(for MF)	CN32	Connector (Centrally control)	SW12	Switch (2nd digit address set)
I.B	Indoor controller board	CN41	Connector (HA terminal-A)	SW14	Switch (connection No.set)
TB2	Power source terminal bed	CN51	Connector (Centrally control)	SW1	Switch (for mode selection 1)
TB5	Transmission terminal bed	CN52	Connector (Remote indication)	SW2	Switch (for capacity code)
TB15	MA Remote controller terminal bed	X01	Aux.relay (Drain pump)	SW3	Switch (for mode selection 2)
F901	Fuse (6.3A/6A)	X04	Aux.relay (ML notch:240V)	SW4	Switch (for model selection)
ZNR1,ZNR901	Varistor	X05	Aux.relay (ML notch:240V/220-230V)	SW5	Switch (for mode selection)
T	Transformer	X06	Aux.relay (H notch:220-230V)	SW7	Switch (for model selection)
DP	Drain pump	X07	Aux.relay (H/M notch:240V/220-230V)	SW8	Switch (for mode selection 3)
LEV	Electronic linear expan.valve	TH21	Thermistor (inlet temp.detection)	T1~T7	Terminal
DS	Drain sensor	TH22	Thermistor (pipe temp.detection/liquid)		
MV	Motor for vane	TH23	Thermistor (pipe temp.detection/gas)		

PLFY-125VLM-D-E

Drw. : IU-W275-927



NOTE: 1. TB2, TB5 shown in dotted line are field work.
 2. Mark indicates terminal bed, board inserion connector or fastening connector of control board.

*: Capacitor
 5.0 F X 2

For test of pump out
 (After confirm drain pump out, take this connector off.)

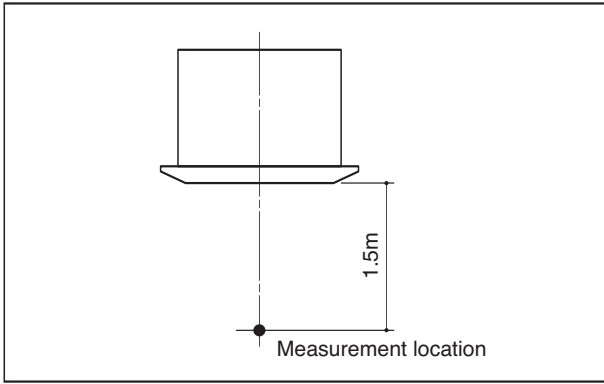
SYMBOL EXPLANATION

SYMBOL	NAME	SYMBOL	NAME	SYMBOL	NAME
MF, MF1, MF2	Fan motor	LEV	Electronic linear expan. valve	SW14(A,B)	Switch (connection No. set)
C, C1, C2	*: Capacitor (for MF, MF1, MF2)	S, B	Surge absorber board	SW1(A,B)	Switch (for mode selection)
I, B	Indoor controller board	LS	Limit switch (MV built in)	SW2(L,B)	Switch (for capacity code)
A, B	Address board	MV	Motor for vane (with limit switch)	SW3(L,B)	Switch (for mode selection)
TB2	Power source terminal bed	DS	Drain sensor	SW4(L,B)	Switch (for model selection)
TB5	Transmission terminal bed	TH21	Thermistor (inlet temp. detection)	SW5(A,B)	Switch (for voltage selection)
TB15	Transmission terminal bed	TH22	Thermistor (pipe temp. detection / liquid)	SW(A,B)	Switch (option parts)
F	Fuse AC250V 6.3A F	TH23	Thermistor (pipe temp. detection / gas)	SWC(A,B)	Switch (option parts)
T	Transformer	SW11(A,B)	Switch (1st digit address set)	X1, X3, X4	Aux. relay
DP	Drain pump	SW12(A,B)	Switch (2nd digit address set)		

4. SOUND LEVELS

4-1. Sound levels

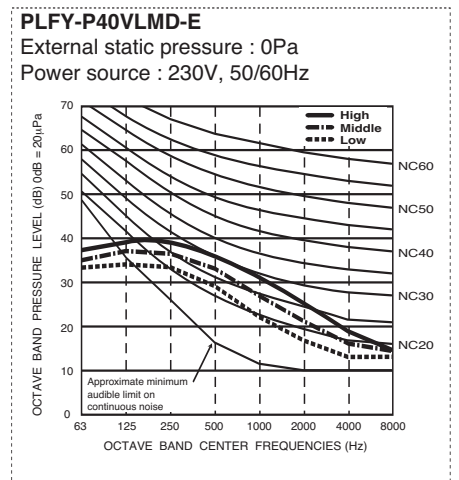
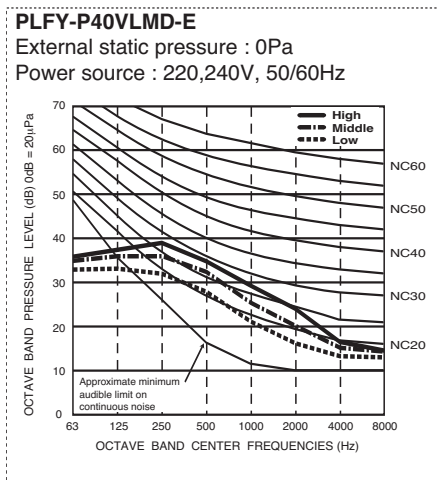
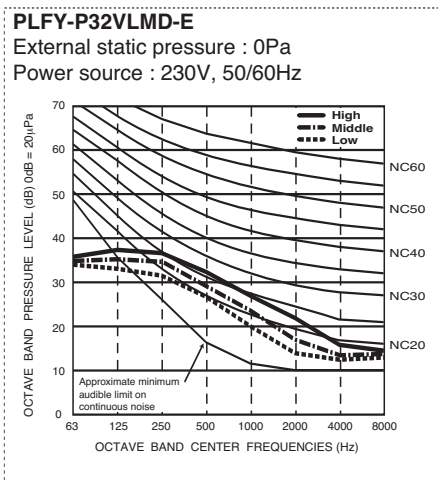
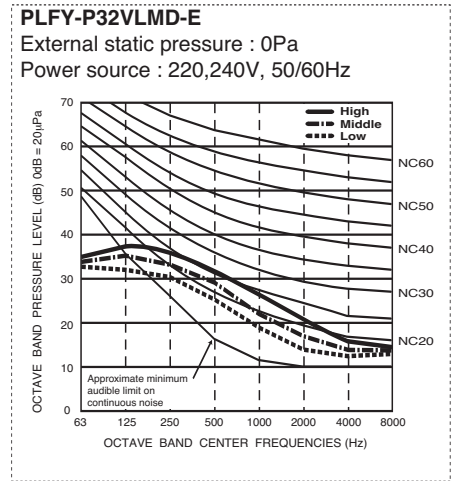
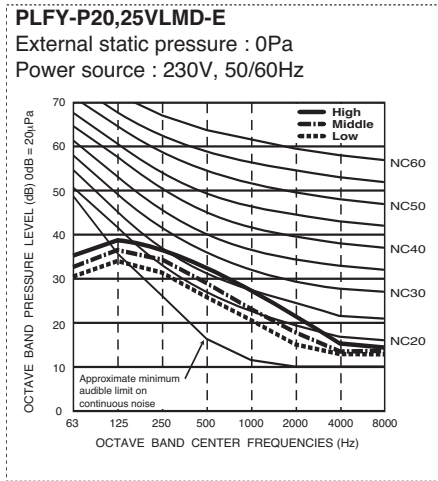
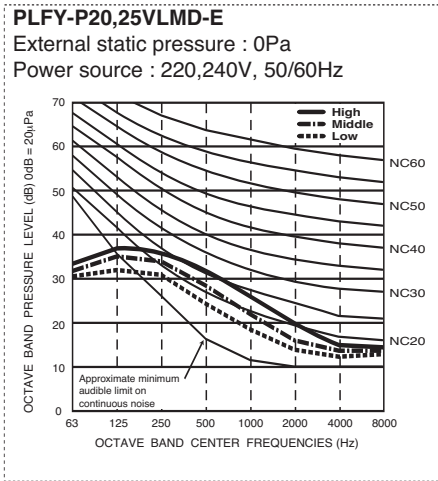
PLFY-P-VLMD-E



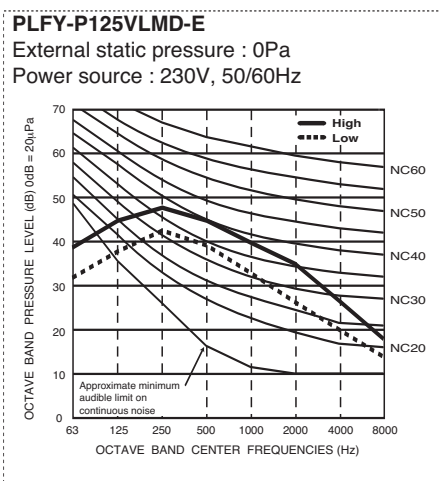
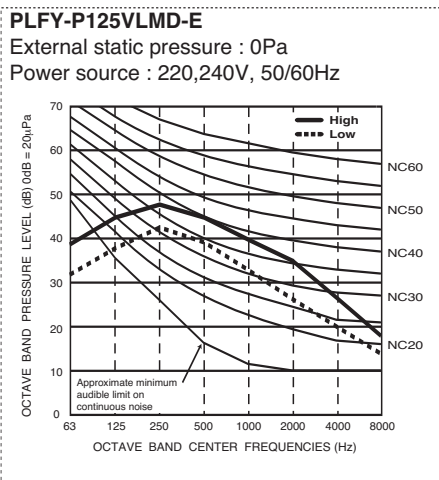
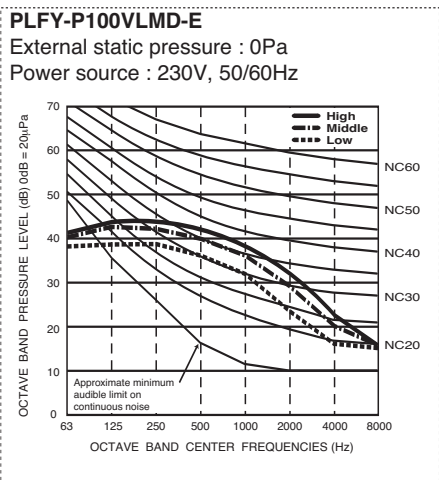
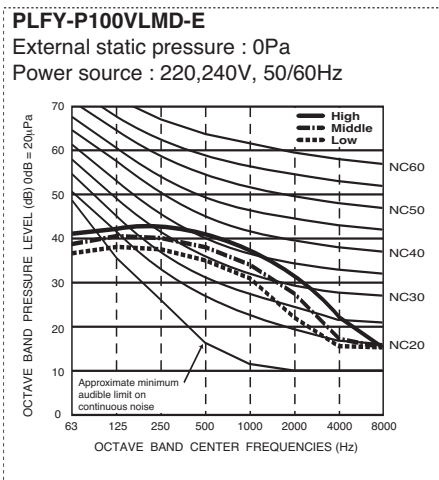
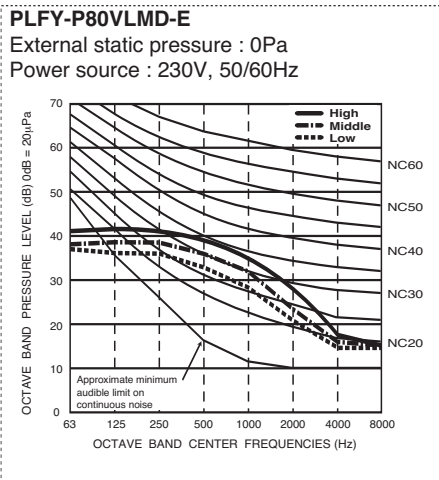
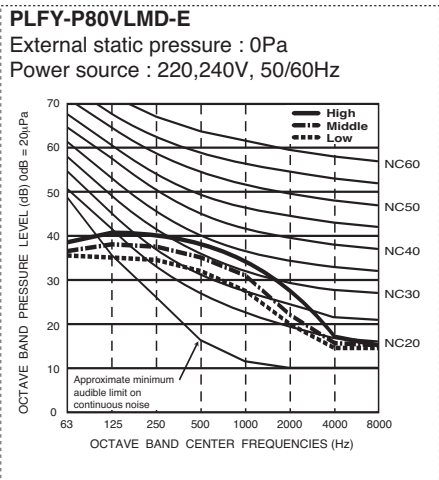
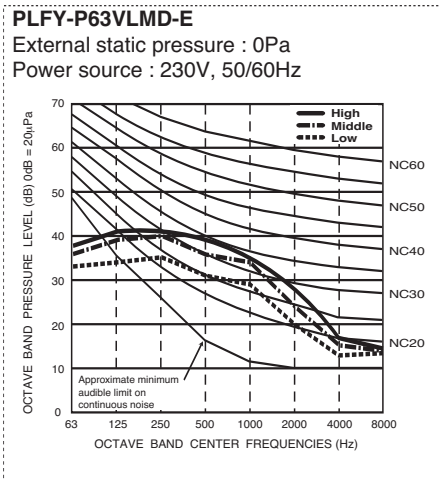
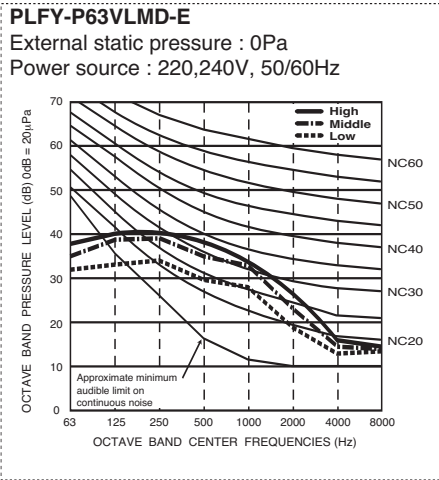
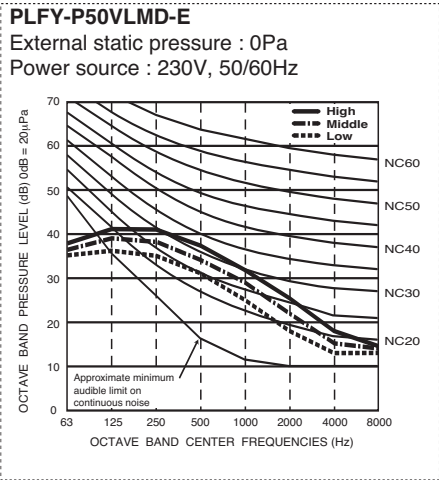
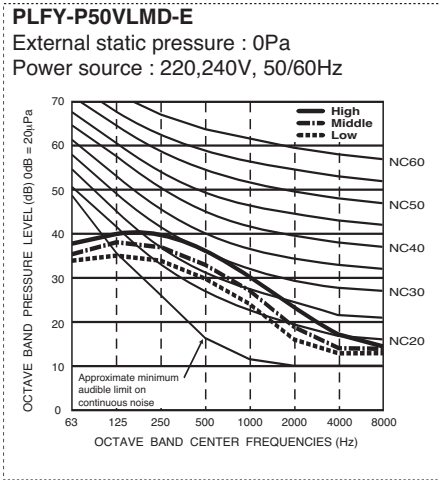
Sound level at anechoic room : Low-Mid-High

	Sound level dB (A)	
	220,240V	230V
PLFY-P20VLMD-E	27-30-33	28-31-34
PLFY-P25VLMD-E		
PLFY-P32VLMD-E	29-33-36	30-34-37
PLFY-P40VLMD-E		
PLFY-P50VLMD-E	31-34-37	32-35-38
PLFY-P63VLMD-E		
PLFY-P80VLMD-E	32-37-39	33-38-40
PLFY-P100VLMD-E		
PLFY-P125VLMD-E	36-39-42	37-41-43
	40-42-44-46	

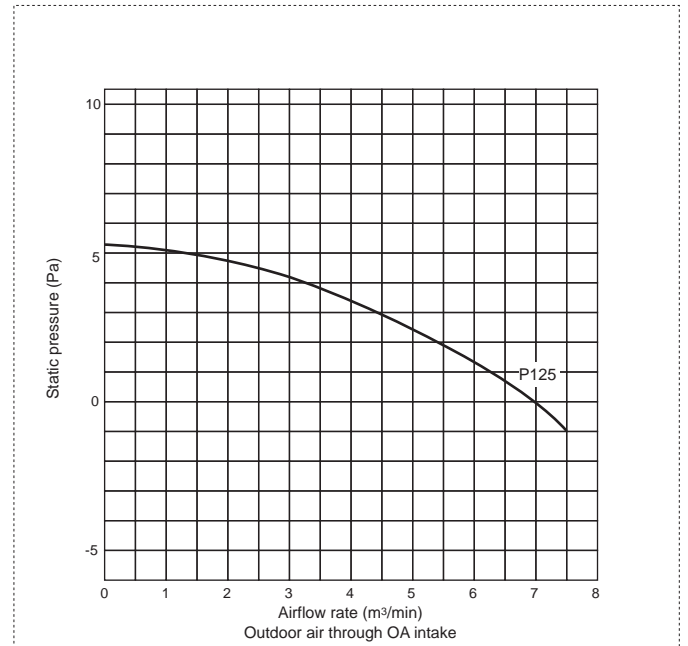
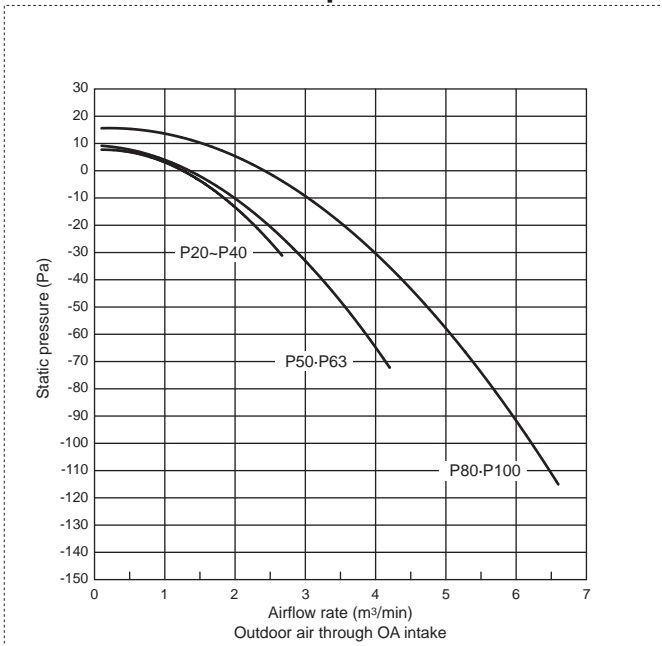
4-2. NC curves



4-2. NC curves



4-3. OA Intake-static pressure curves



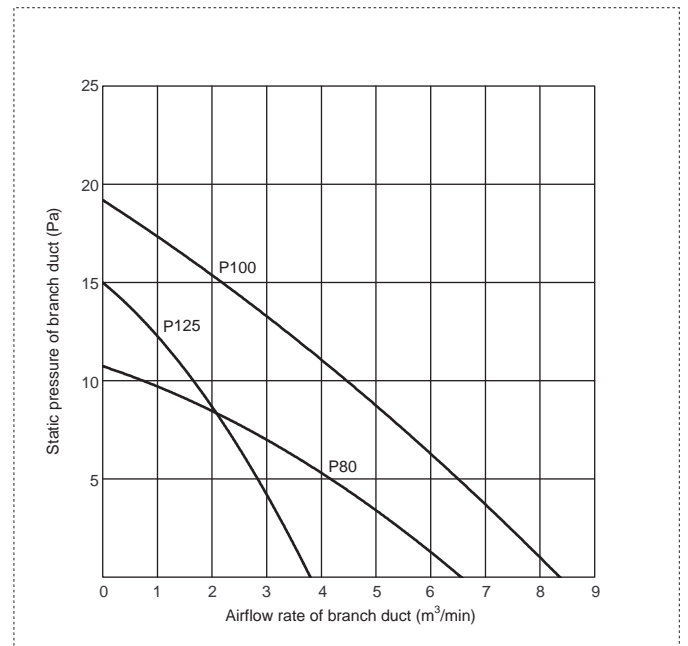
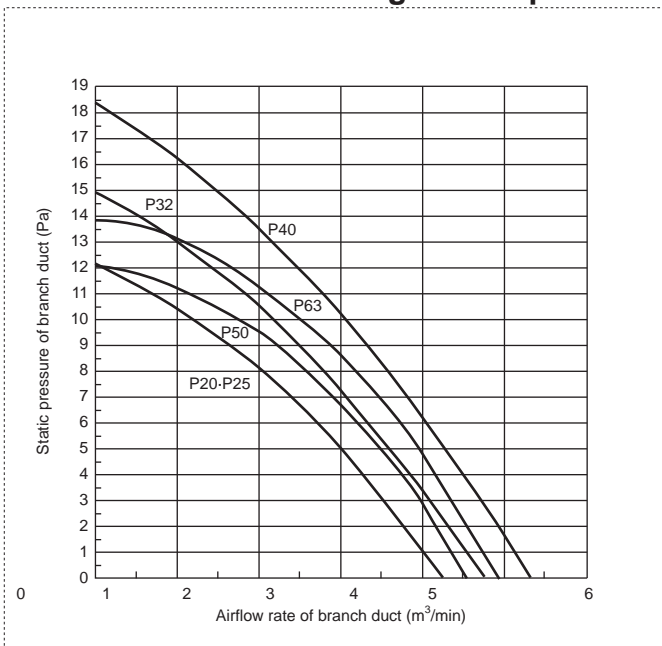
Please confirm that inlet-air temperature (which is mixed with outdoor air) is in the following operating temperature range.

PLFY-P-VLMD-E : Operating temperature range

Mode	Temperature range of inlet air
Cooling	15°C~24°C(Wet bulb)
Dry	
Heating	15°C~27°C(Dry bulb)

*Relative humidity range is 30~80%.

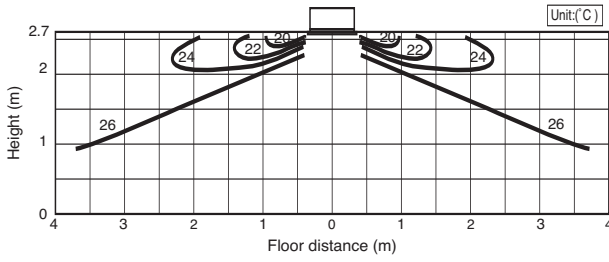
4-4. Branch duct Discharge-static pressure curves



5-1. Temperature distributions

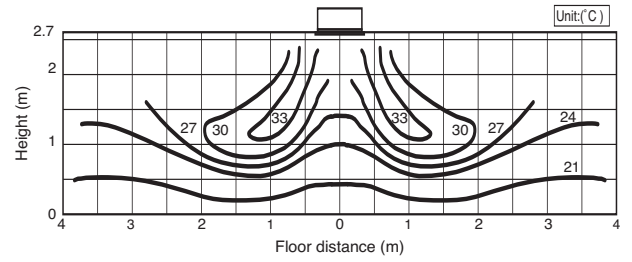
<Cooling mode>

Airflow angle : Horizontal
 Room temp. : 27°C
 Airflow rate : High



<Heating mode>

Airflow angle : Downward
 Room temp. : 20°C
 Airflow rate : High

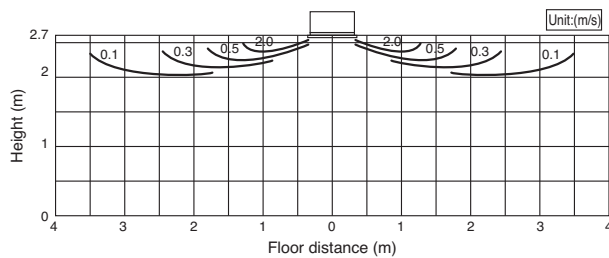


Note : These figures show typical temperature distributions in the conditions above. In the actual installation, they may differ from these figures under the influence of air temperature conditions, ceiling height, cooling/heating load, obstacles, etc.

5-2. Airflow distributions

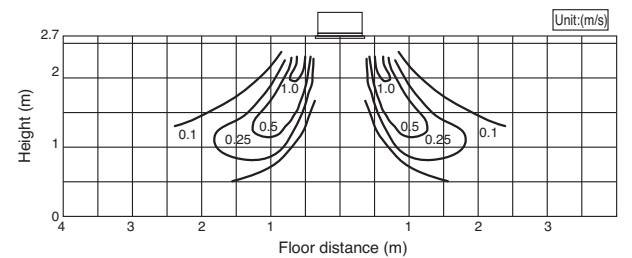
<Cooling mode>

Airflow angle : Horizontal
 Room temp. : 27°C
 Airflow rate : High



<Heating mode>

Airflow angle : Downward
 Room temp. : 20°C
 Airflow rate : High

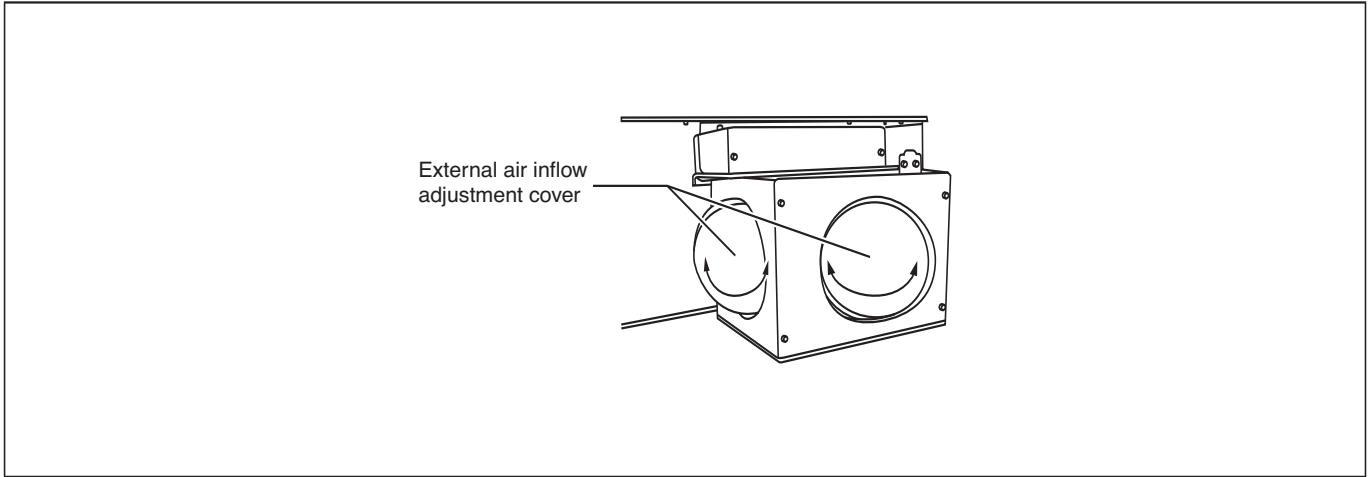


Note : These figures show typical airflow distributions in the conditions above. In the actual installation, they may differ from these figures under the influence of air temperature conditions, ceiling height, cooling/heating load, obstacles, etc.

Optional parts line up for the Indoor unit

	OA duct flange
PLFY-P-VLMD-E	PAC-KH110F

● PLFY-P-VLMD-E



■ OA duct flange PAC-KH110F for PLFY-P-VLMD-E

OA duct flange PAC-KH110F makes outside fresh air ducting to the Indoor unit easier.

Material: Galvanized steel plate, with insulation sheet adhered.

Item	① External air intake ducting	② Ducting flange	③ PTT screws (4×10)
Quantity	1	1	10 (two spares)
Shape			

Detailed installation information should be referred to its Installation Manual (WT03833X06)

- A
- B
- C
- D**
- E
- F
- G
- H
- V_A
- V_B
- EC
- CT