

SERVICE PARTS LIST FOR MITSUBISHI ELECTRIC PACKAGED AIR-CONDITIONERS

**Series : PLFY-P·VLMD-E
CMP-VLW-B**

For use with the R407C

REVISED

Aug 2007

BWE0404D

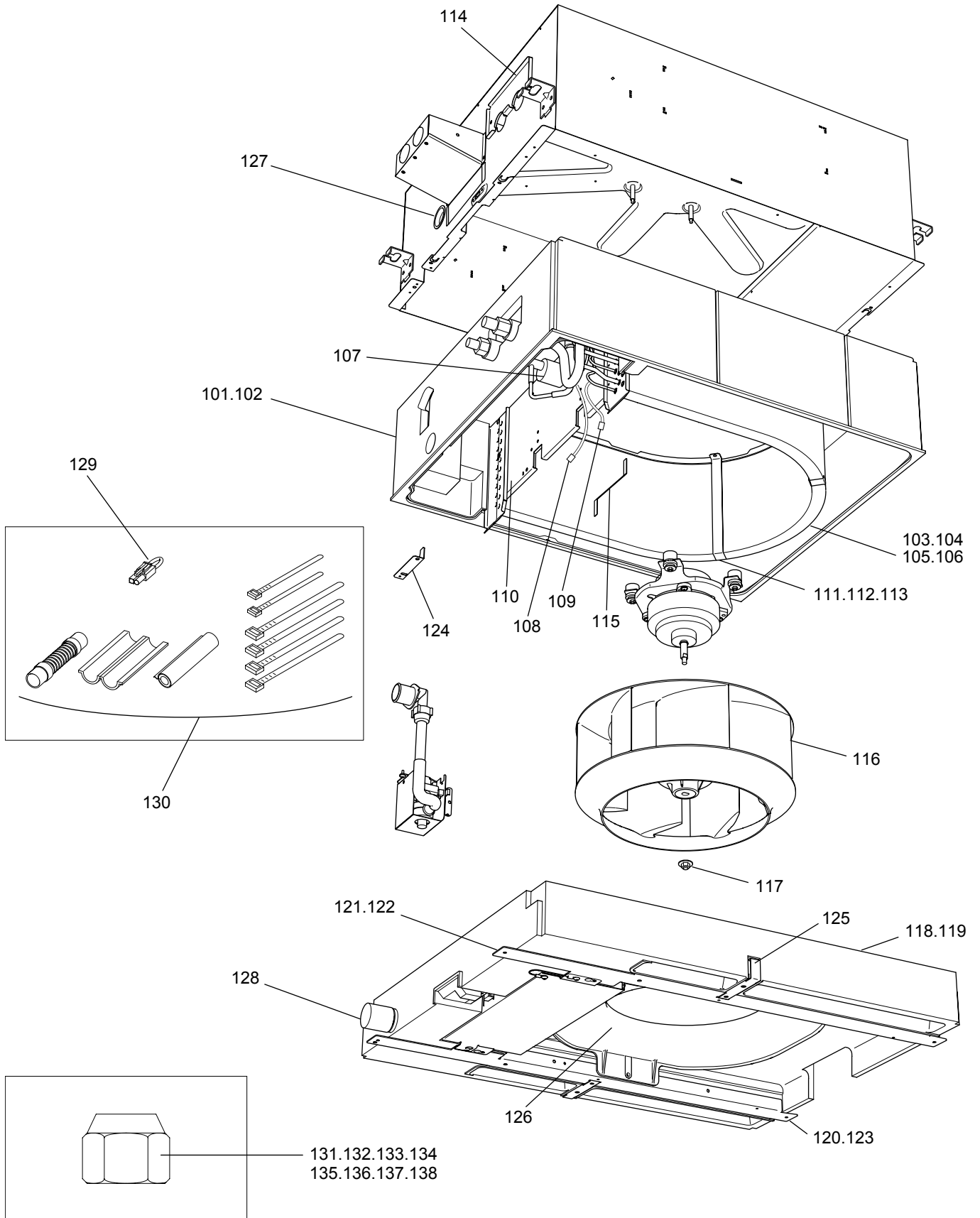
INDEX

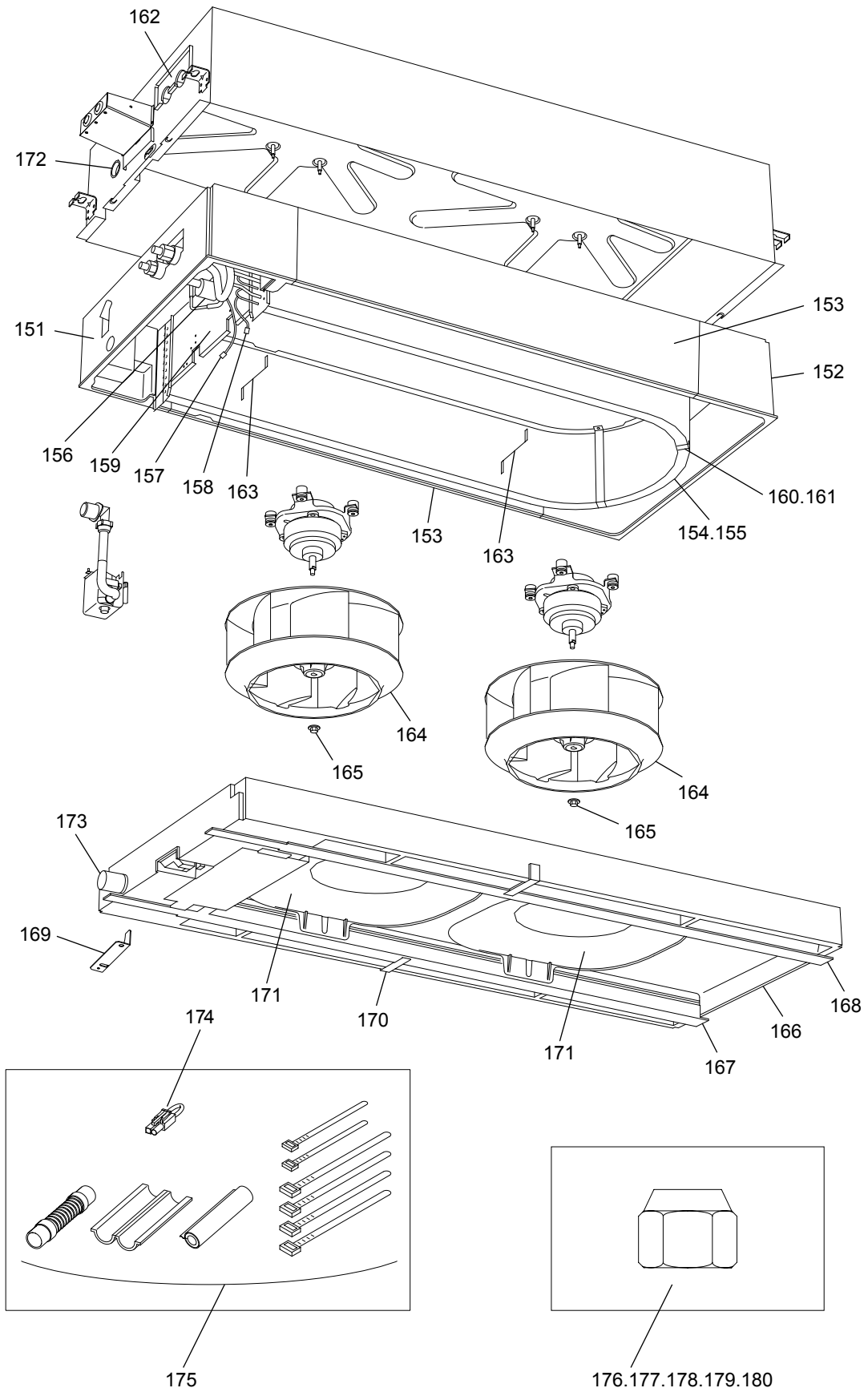
**PLFY-P20VLMD-E
PLFY-P25VLMD-E
PLFY-P32VLMD-E
PLFY-P40VLMD-E
PLFY-P50VLMD-E
PLFY-P63VLMD-E
PLFY-P80VLMD-E
PLFY-P100VLMD-E
PLFY-P125VLMD-E
CMP-40VLW-B
CMP-63VLW-B
CMP-100VLW-B
CMP-125VLW-B**

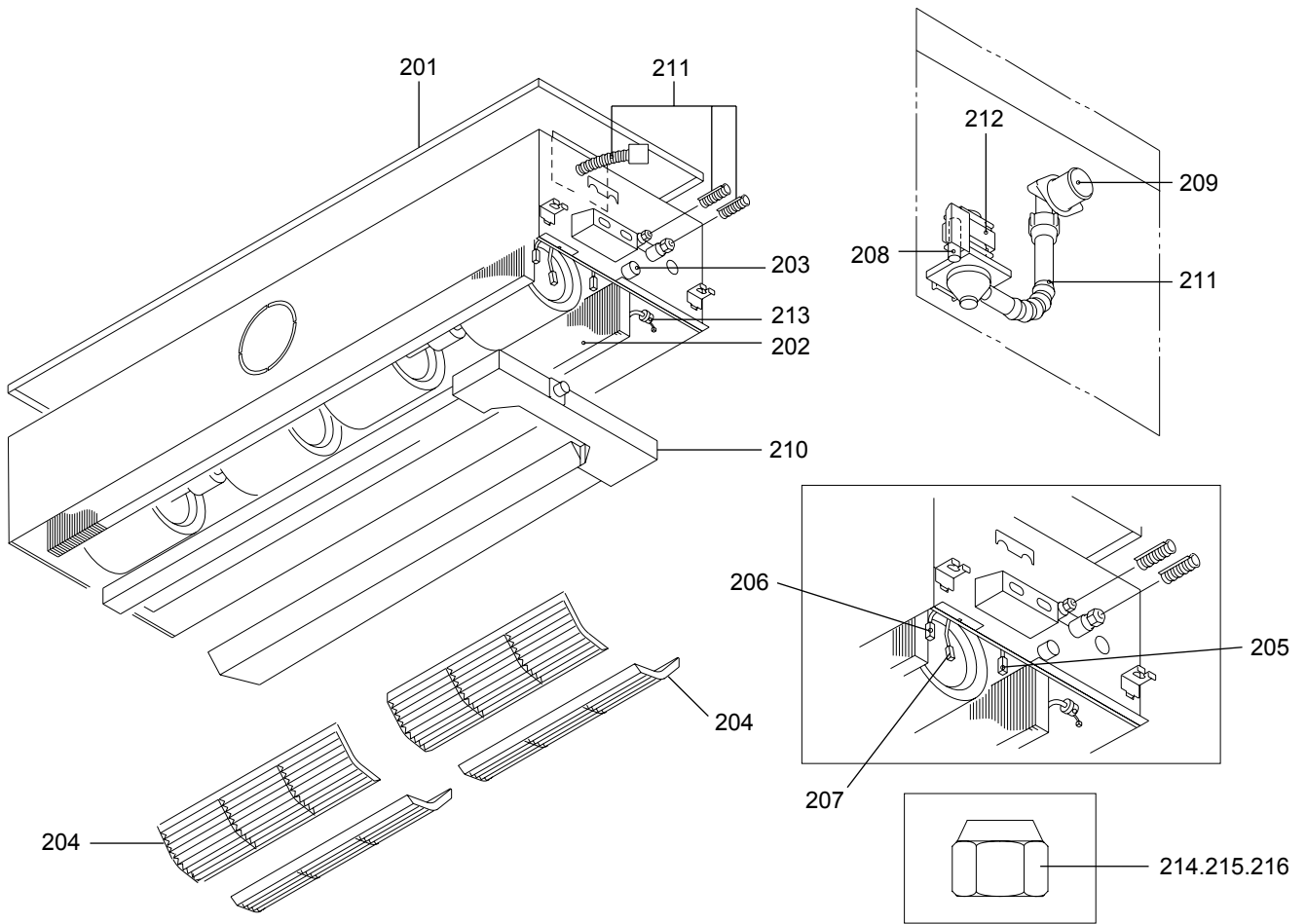


PLFY-P20,P25,P32VLMD-E
PLFY-P40,P50,P63VLMD-E

EXTERNAL PARTS (1)



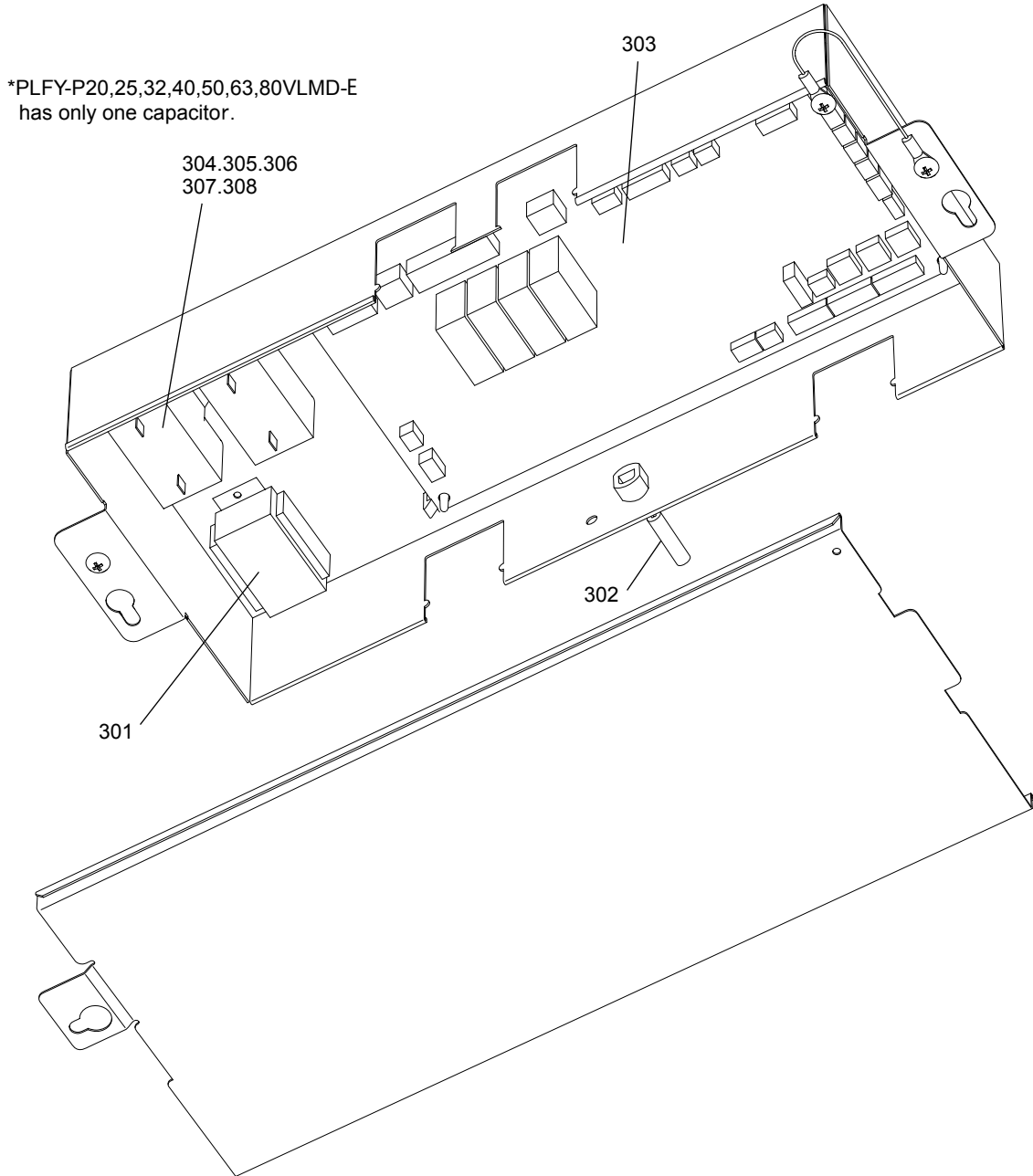




No.	Part No.	G : RoHS Apply Only W : RoHS Apply by Running Change		Spec.	PLFY-P125VLMD-E	Dwg. No.	Price	Revision History
		Part Name						
201	R63 E96 641	G	Top panel assy		1	W625343G01		
202	R63 Y84 481	G	Heat exchanger assy	J112	1	W125139G16		
203	R61 E96 558	G	Rubber stopper		1	P312040X01		
204	R63 E96 500	G	Air filter	112	4	P717990S01		
205	R63 E38 287	G	Sensor processing (gas)	<TH23>	1	W860042G02		
206	R63 E38 288	G	Sensor processing (liquid)	<TH22>	1	W860042G03		
207	R63 E96 288	G	Sensor processing (inlet)	<TH21>	1	W860042G04		
208	R63 H86 289	G	Drain sensor assy	<DS>	1	W861228G02		
209	R61 A75 218	G	Socket		1	W621301H01		
210	R63 E96 529	G	Drain pan assy	112	1	W622592G27		
211	R63 Y01 525	G	Drain hose set		1	W650735G01		
212	R63 Y04 539	G	Drain pump LVD	<DP>	1	P722079X01		
213	R63 005 401	G	Linear expansion valve	<LEV>EFM-80YGMD-3	1	P632452X01		D
214	R63 M03 122	G	Flare nut	<R22,R407C>	1	W457611H05		
215	R63 S36 122	G	Flare nut	<R22,R407C,R410A>	1	W843440H01		
216	R63 S42 122	G	Flare nut	<R410A>	1	W905522H01		

PLFY-P20,P25,P32VLMD-E
 PLFY-P40,P50,P63VLMD-E
 PLFY-P80,P100VLMD-E

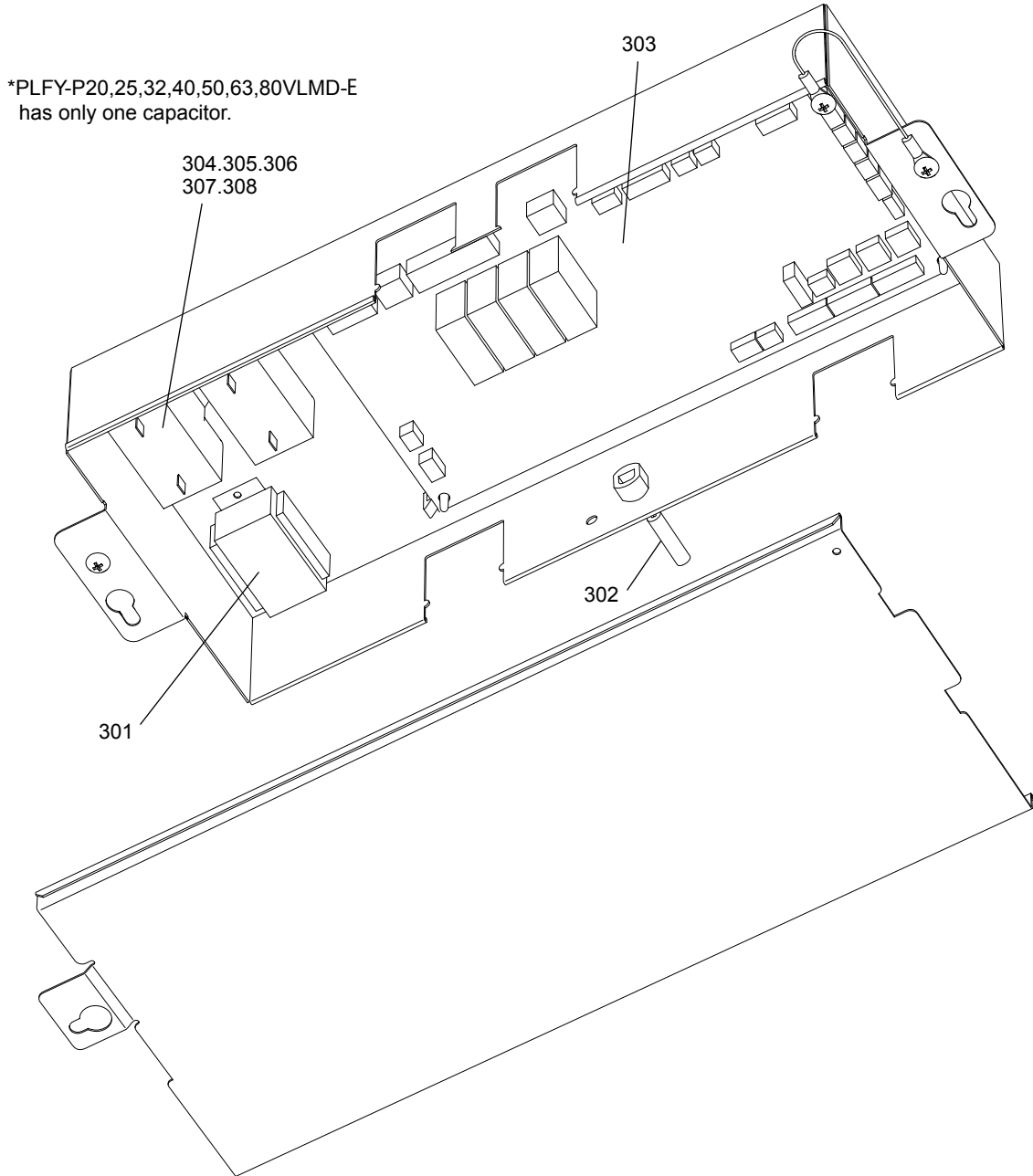
CONTROL BOX PARTS (1)



No.	Part No.	G : RoHS Apply Only W : RoHS Apply by Running Change		Spec.	PLFY-P20VLMD-E	PLFY-P25VLMD-E	PLFY-P32VLMD-E	PLFY-P40VLMD-E	Dwg. No.	Price	Revision History
			Part Name								
301	R61 004 260	G	Transformer	T 240V/23.2V-1.1AXA	1	1	1	1	P715419X01		D
302	R63 Y01 287	G	Sensor (inlet)		1	1	1	1	W891304G16		
303	R63 Y34 281	G	Control board		1	1	1	1	W849072G02		
304	R63 Y22 252	G	Capacitor 1.3μF	440VAC 1.3μF	1	1	1		P412283X01		
305	R63 Y14 252	G	Capacitor 1.5μF	440VAC 1.5μF				1	P412234X01		
306	R63 Y23 252	G	Capacitor 1.7μF	440VAC 1.7μF					P412280X01		
307	R63 M92 252	G	Capacitor 2.2μF	440VAC 2.2μF					P412282X01		
308	R63 Y15 252	G	Capacitor 2.0μF						P412235X01		

PLFY-P20,P25,P32VLMD-E
 PLFY-P40,P50,P63VLMD-E
 PLFY-P80,P100VLMD-E

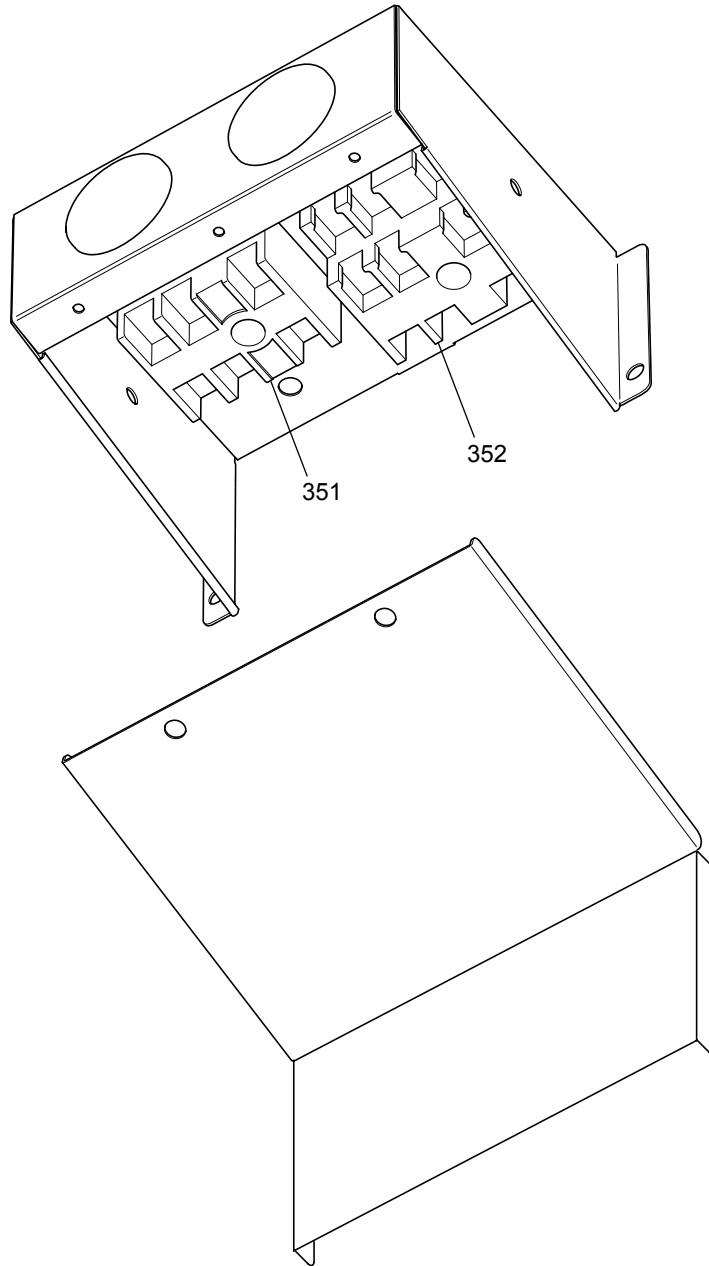
CONTROL BOX PARTS (1)



No.	Part No.	G : RoHS Apply Only W : RoHS Apply by Running Change		Spec.	PLFY-P50VLMD-E	PLFY-P63VLMD-E	PLFY-P80VLMD-E	PLFY-P100VLMD-E	Dwg. No.	Price	Revision History
			Part Name								
301	R61 004 260	G	Transformer	T 240V/23.2V-1.1AXA	1	1	1	1	P715419X01		D
302	R63 Y01 287	G	Sensor (inlet)		1	1	1	1	W891304G16		
303	R63 Y34 281	G	Control board		1	1	1	1	W849072G02		
304	R63 Y22 252	G	Capacitor 1.3μF	440VAC 1.3μF					P412283X01		
305	R63 Y14 252	G	Capacitor 1.5μF	440VAC 1.5μF			2		P412234X01		
306	R63 Y23 252	G	Capacitor 1.7μF	440VAC 1.7μF	1				P412280X01		
307	R63 M92 252	G	Capacitor 2.2μF	440VAC 2.2μF		1			P412282X01		
308	R63 Y15 252	G	Capacitor 2.0μF				2		P412235X01		

PLFY-P20,P25,P32VLMD-E
 PLY-P40,P50,P63VLMD-E
 PLY-P80,P100VLMD-E

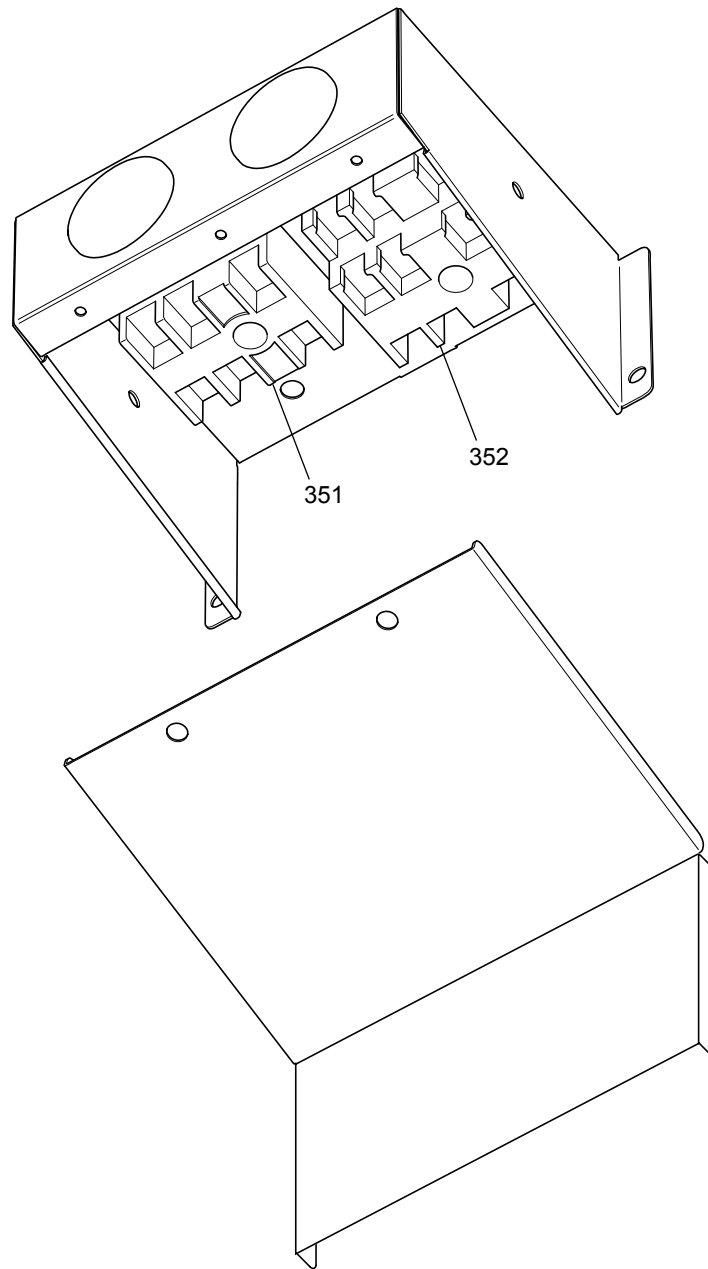
CONTROL BOX PARTS (2)



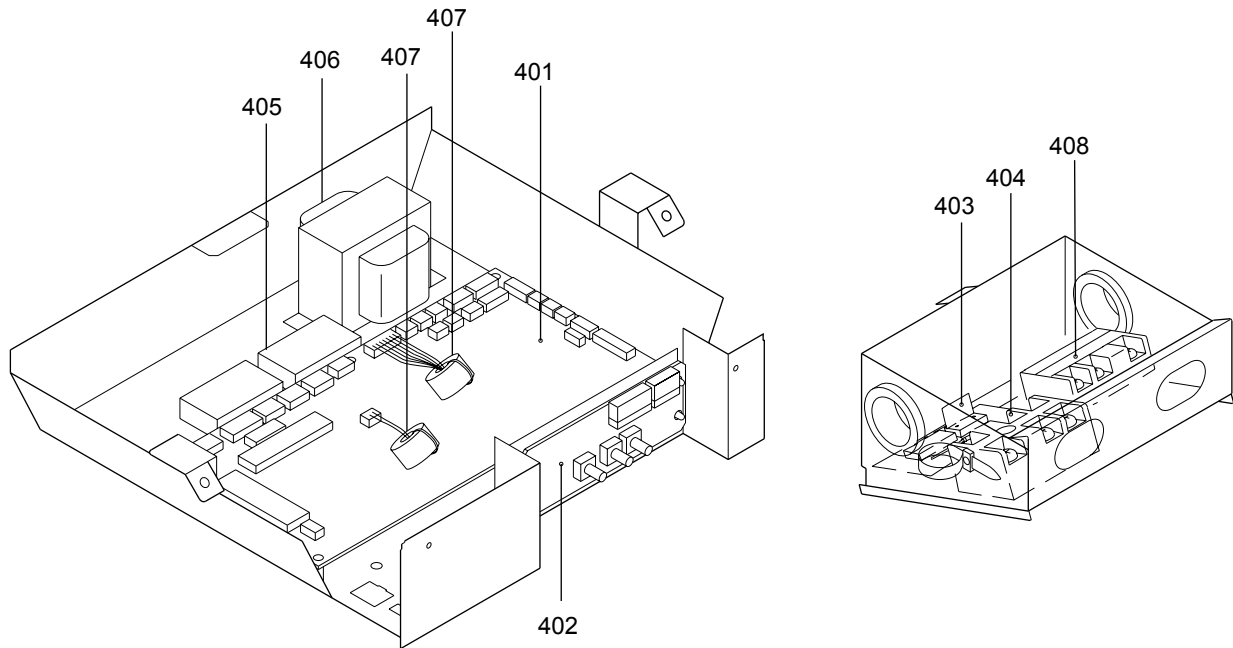
No.	Part No.	G : RoHS Apply Only W : RoHS Apply by Running Change		Spec.	PLFY-P20VLMD-E	PLFY-P25VLMD-E	PLFY-P32VLMD-E	PLFY-P40VLMD-E	Dwg. No.	Price	Revision History
			Part Name								
351	R63 Y08 715	G	Terminal block		1	1	1	1	P436157X01		
352	R63 336 246	G	Terminal block		1	1	1	1	P436114X03		

PLFY-P20,P25,P32VLMD-E
 PLFY-P40,P50,P63VLMD-E
 PLFY-P80,P100VLMD-E

CONTROL BOX PARTS (2)



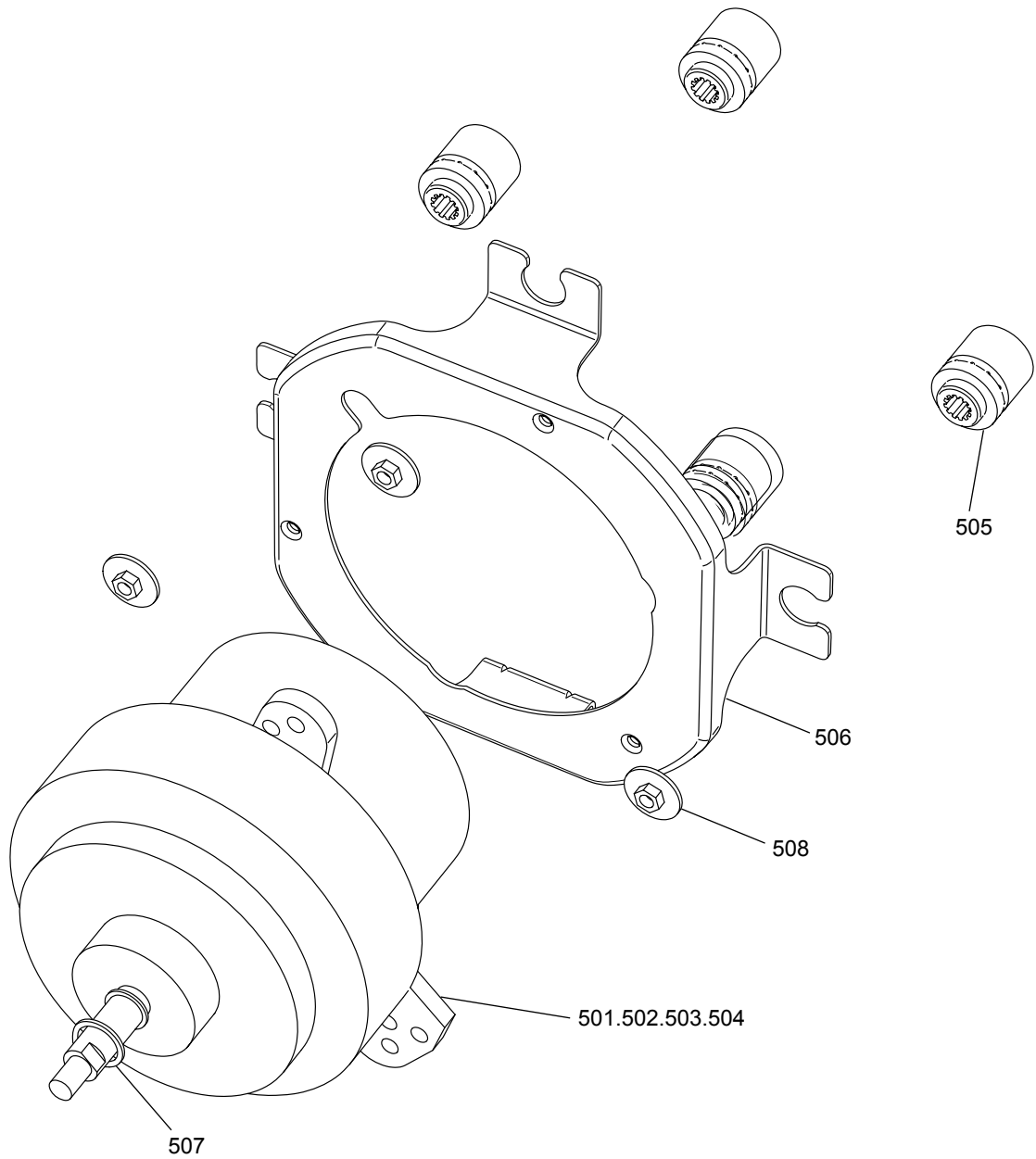
No.	Part No.	G : RoHS Apply Only W : RoHS Apply by Running Change		Spec.	PLFY-P50VLMD-E	PLFY-P63VLMD-E	PLFY-P80VLMD-E	PLFY-P100VLMD-E	Dwg. No.	Price	Revision History
			Part Name								
351	R63 Y08 715	G	Terminal block		1	1	1	1	P436157X01		
352	R63 336 246	G	Terminal block		1	1	1	1	P436114X03		



No.	Part No.	G : RoHS Apply Only W : RoHS Apply by Running Change		Spec.	PLFY-P125VLMD-E			Dwg. No.	Price	Revision History
			Part Name							
401	R63 Y35 281	G	Board assy (PC)	<I.B>	1			W849072G04		
402	R63 Y37 281	G	Board assy (AD)	<A.B>	1			W849036G09		
403	R63 Y22 280	G	Board assy (DSA)	<S.B>	1			W849072G13		
404	R63 Y08 715	G	Terminal block	<TB2>	1			P436157X01		
405	R63 F79 252	G	Capacitor 5	<C1,2>(440VAC,5μF)	2			P412214X01		
406	R63 007 260	G	Transformer	<T>(240V/23.5V-0.9A)	1			P715414X01		
407	R63 Y01 015	G	Troidal ferrite clamp	<FB1,2>	1			P419042X01		
408	R63 336 246	G	Terminal block	<TB5>,<TB15>	1			P436114X03		

PLFY-P20,P25,P32VLMD-E
 PLY-P40,P50,P63VLMD-E
 PLY-P80,P100VLMD-E

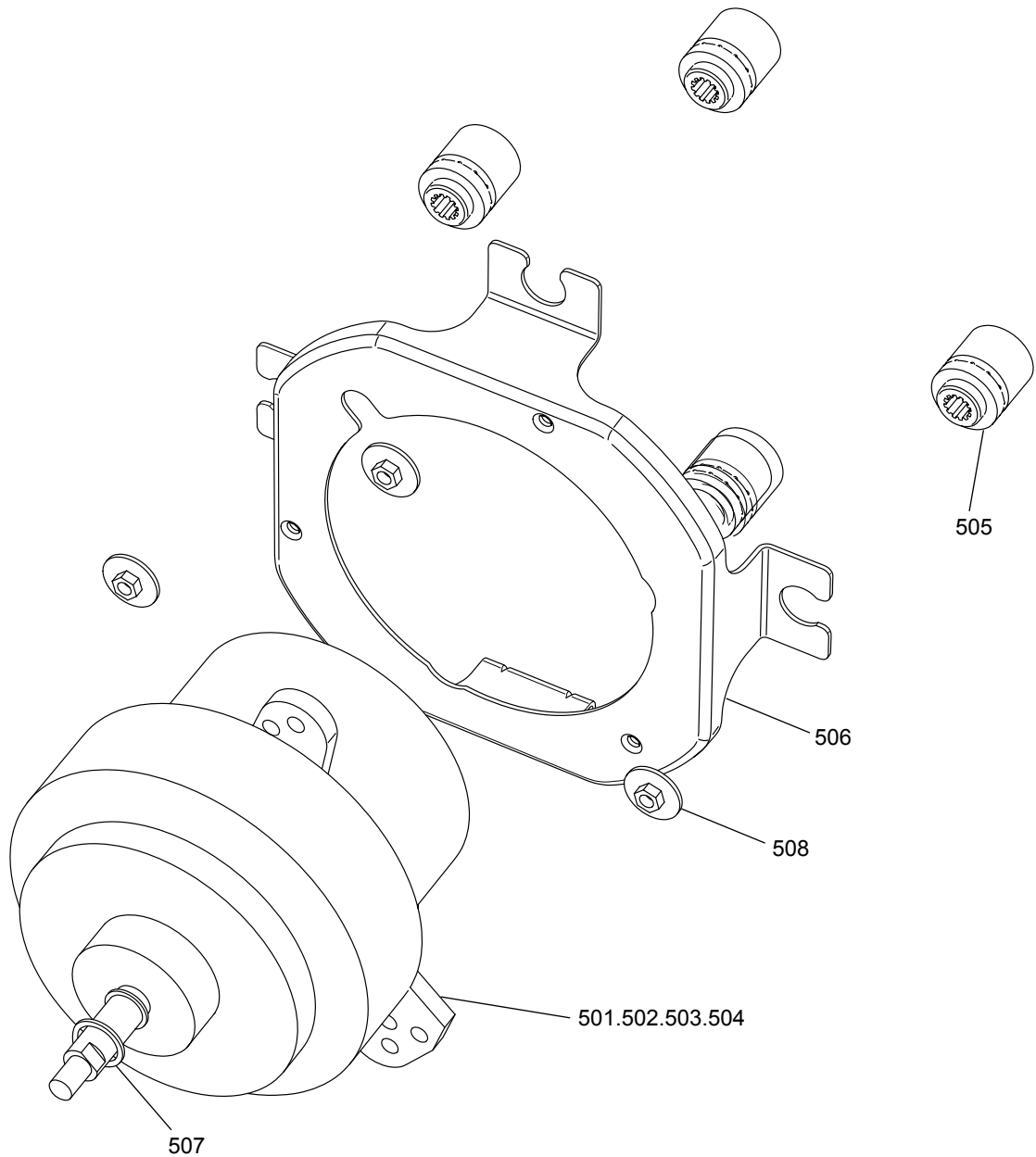
BLOWER PARTS (1)



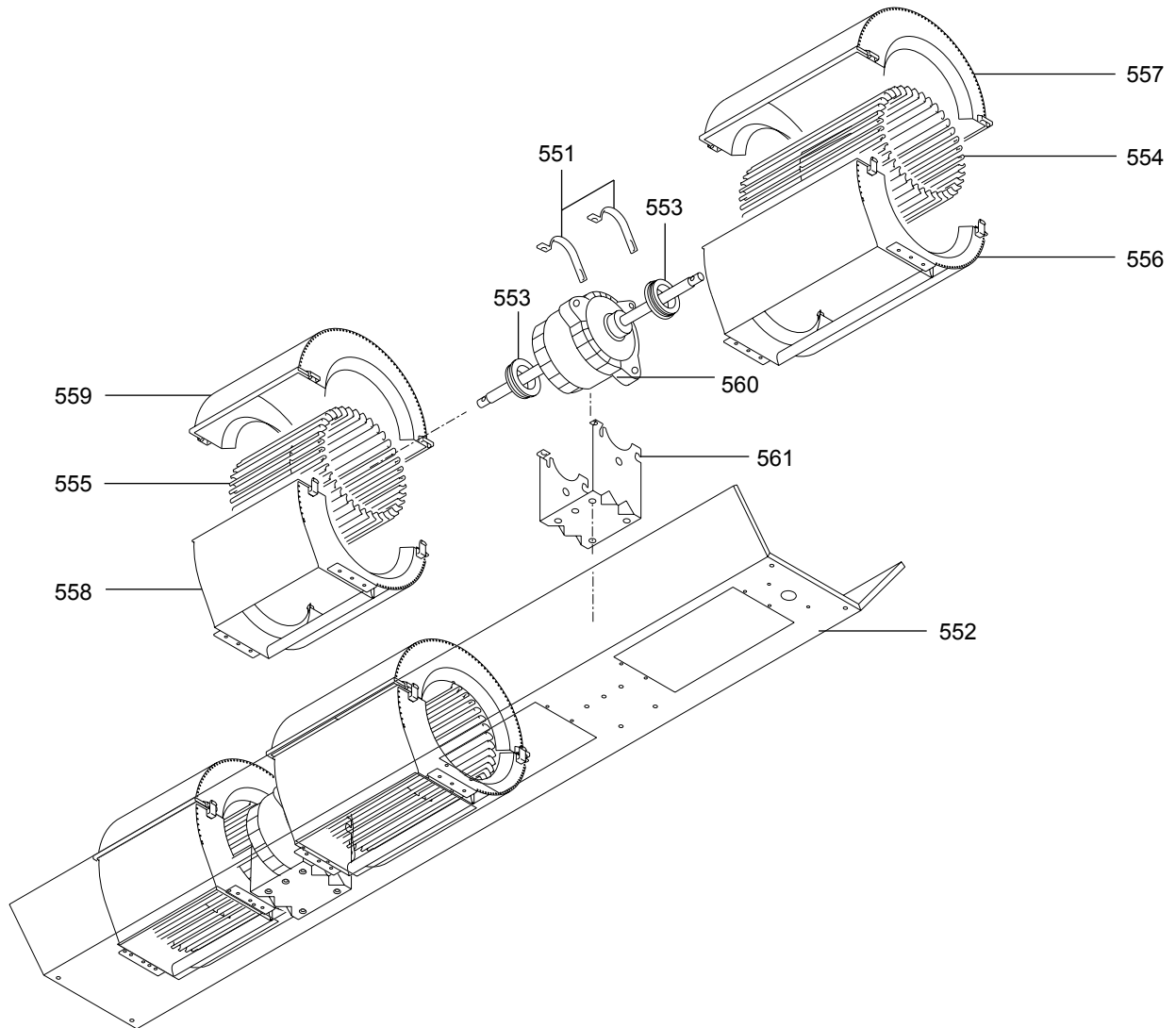
No.	Part No.	G : RoHS Apply Only W : RoHS Apply by Running Change		Spec.	PLFY-P20VLMD-E	PLFY-P25VLMD-E	PLFY-P32VLMD-E	PLFY-P40VLMD-E	Dwg. No.	Price	Revision History
			Part Name								
501	R63 S74 220	G	Motor	P15MW	1	1	1	1	P714949X01		
502	R63 1E5 220	G	Motor	P20MW					P714950X01		
503	R63 Y40 221	G	Motor	P35MW					P714955X01		
504	R63 Y41 221	G	Motor	P40MW					P714956X01		
505	R61 M91 130	G	Motor mount		4	4	4	4	W893009H01		
506	R63 M91 131	G	Motor plate		1	1	1	1	W645053H01		
507	R61 M91 136	G	Washer		1	1	1	1	W897145H01		
508	R63 491 314	G	Washer nut	M5	4	4	4	4	W840920H01		

PLFY-P20,P25,P32VLMD-E
 PLFY-P40,P50,P63VLMD-E
 PLFY-P80,P100VLMD-E

BLOWER PARTS (1)



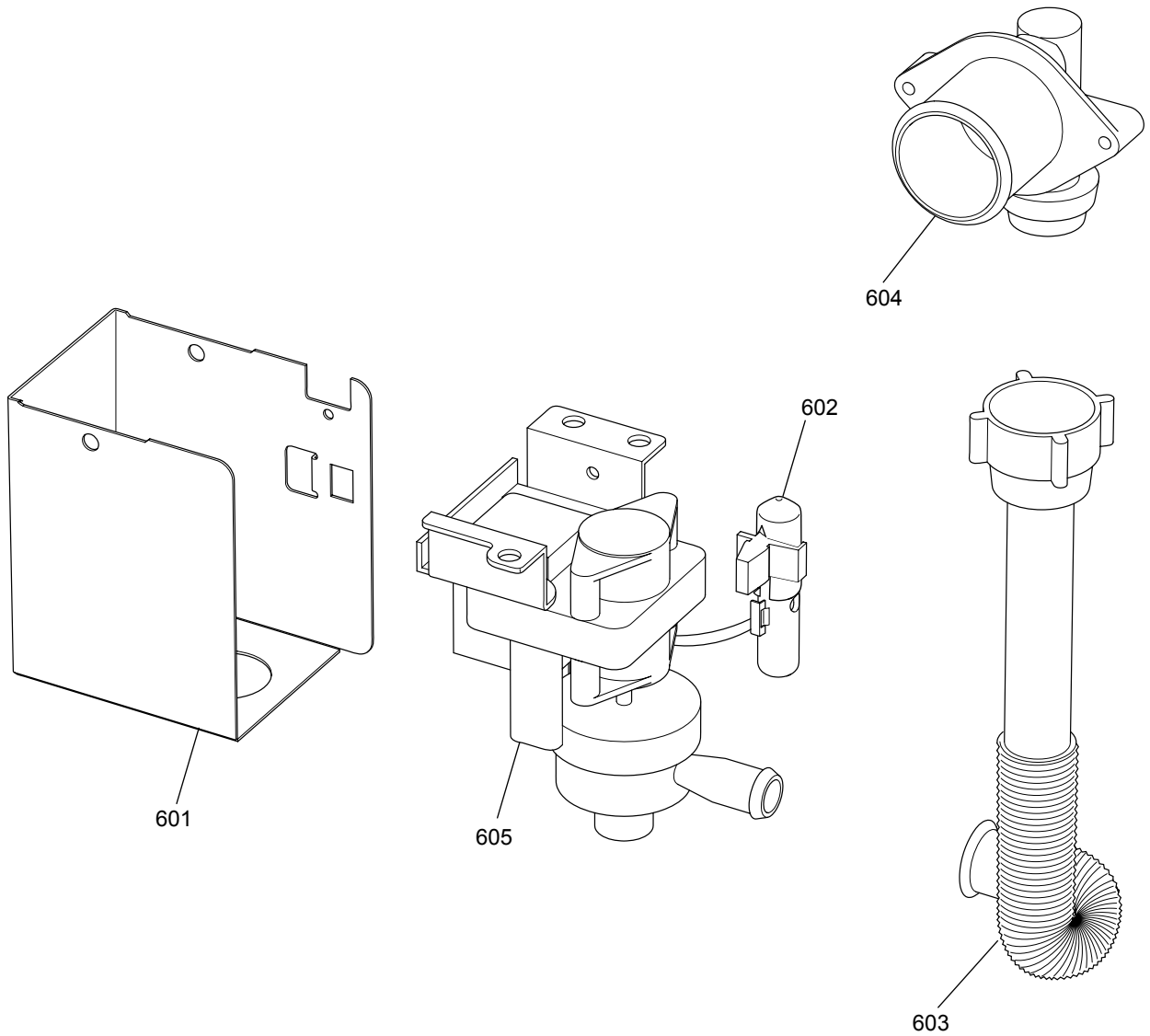
No.	Part No.	G : RoHS Apply Only W : RoHS Apply by Running Change		Spec.	PLFY-P50VLMD-E	PLFY-P63VLMD-E	PLFY-P80VLMD-E	PLFY-P100VLMD-E	Dwg. No.	Price	Revision History
			Part Name								
501	R63 S74 220	G	Motor	P15MW					P714949X01		
502	R63 1E5 220	G	Motor	P20MW	1	1			P714950X01		
503	R63 Y40 221	G	Motor	P35MW			2		P714955X01		
504	R63 Y41 221	G	Motor	P40MW				2	P714956X01		
505	R61 M91 130	G	Motor mount		4	4	8	8	W893009H01		
506	R63 M91 131	G	Motor plate		1	1	2	2	W645053H01		
507	R61 M91 136	G	Washer		1	1	2	2	W897145H01		
508	R63 491 314	G	Washer nut	M5	4	4	8	8	W840920H01		



No.	Part No.	G : RoHS Apply Only W : RoHS Apply by Running Change		Spec.	PLFY-P125VLMD-E			Dwg. No.	Price	Revision History
			Part Name							
551	R63 652 131	G	Fixing plate		4			W353715H01		
552	R63 Y17 140	G	Fan stand assy	112	1			W625341G02		
553	R61 979 104	G	Rubber bush	CR,black	4			W843446H02		
554	R63 G21 114	G	Sirocco fan	180-230	2			W122297G02		
555	R63 G22 114	G	Sirocco fan	180-180	2			W122296G02		
556	R63 E38 109	G	Fan casing	180-230	2			W126411G02		
557	R63 E39 109	G	Fan casing	180-230	2			W126412G02		
558	R63 E40 109	G	Fan casing	180-180	2			W126411G01		
559	R63 E41 109	G	Fan casing	180-180	2			W126412G01		
560	R63 E96 220	G	Motor	<MF>78W,1PHASE,220V	2			P714426X01		
561	R63 E38 130	G	Motor support		2			W260434H02		

PLFY-P20,P25,P32VLMD-E
 PLY-P40,P50,P63VLMD-E
 PLY-P80,P100VLMD-E

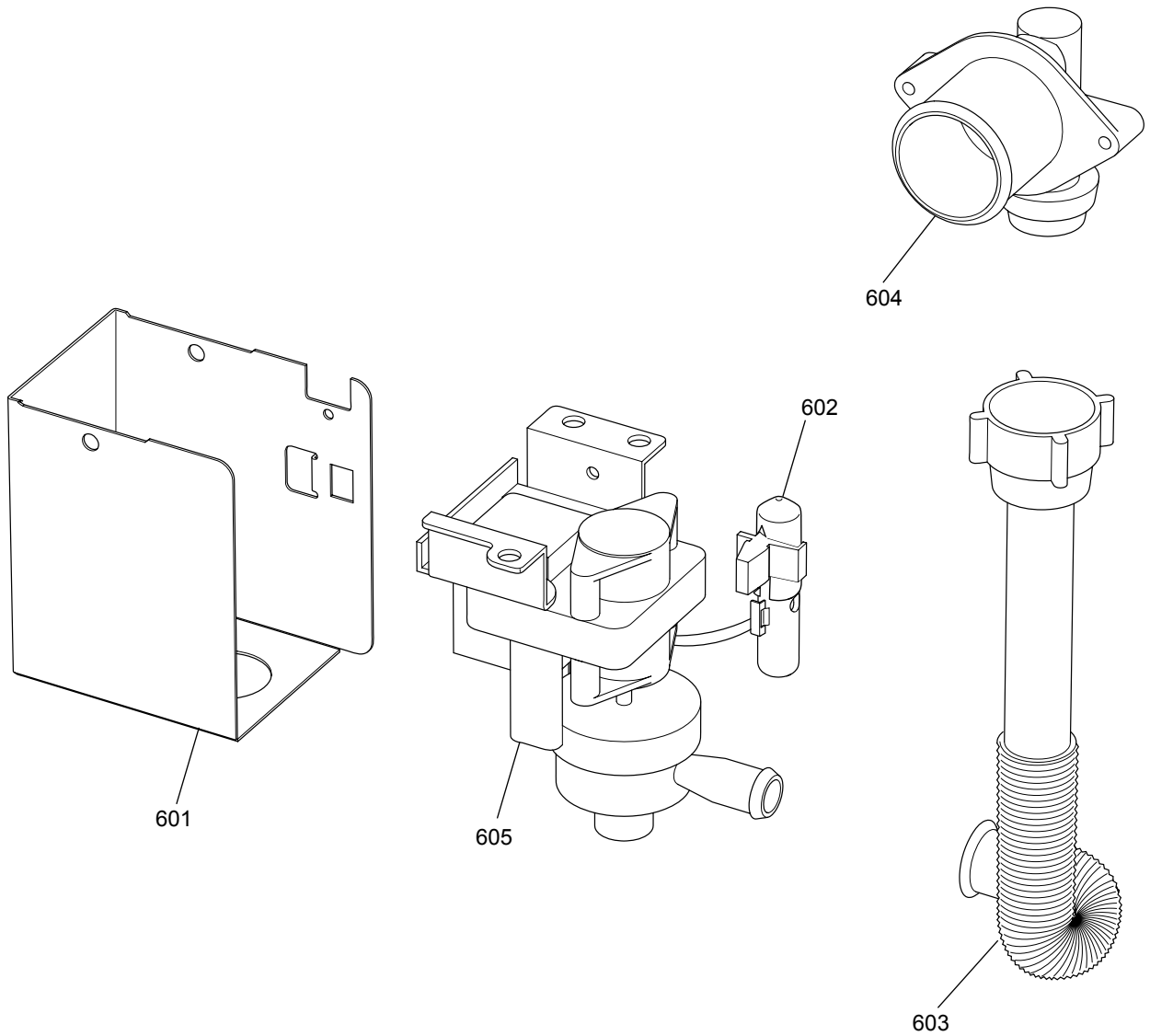
DRAIN PUMP PARTS



No.	Part No.	G : RoHS Apply Only W : RoHS Apply by Running Change		Spec.	PLFY-P20VLMD-E	PLFY-P25VLMD-E	PLFY-P32VLMD-E	PLFY-P40VLMD-E	Dwg. No.	Price	Revision History
			Part Name								
601	R61 M91 668	G	Drain pump cover		1	1	1	1	W645424H02		
602	R63 M91 287	G	Drain sensor		1	1	1	1	W861228G07		
603	R61 E38 527	G	Hose for pump LVD		1	1	1	1	P645057X02		
604	R61 A75 218	G	Socket		1	1	1	1	W621301H01		
605	R63 6H4 539	G	Drain pump		1	1	1	1	P722101X01		

PLFY-P20,P25,P32VLMD-E
 PLY-P40,P50,P63VLMD-E
 PLY-P80,P100VLMD-E

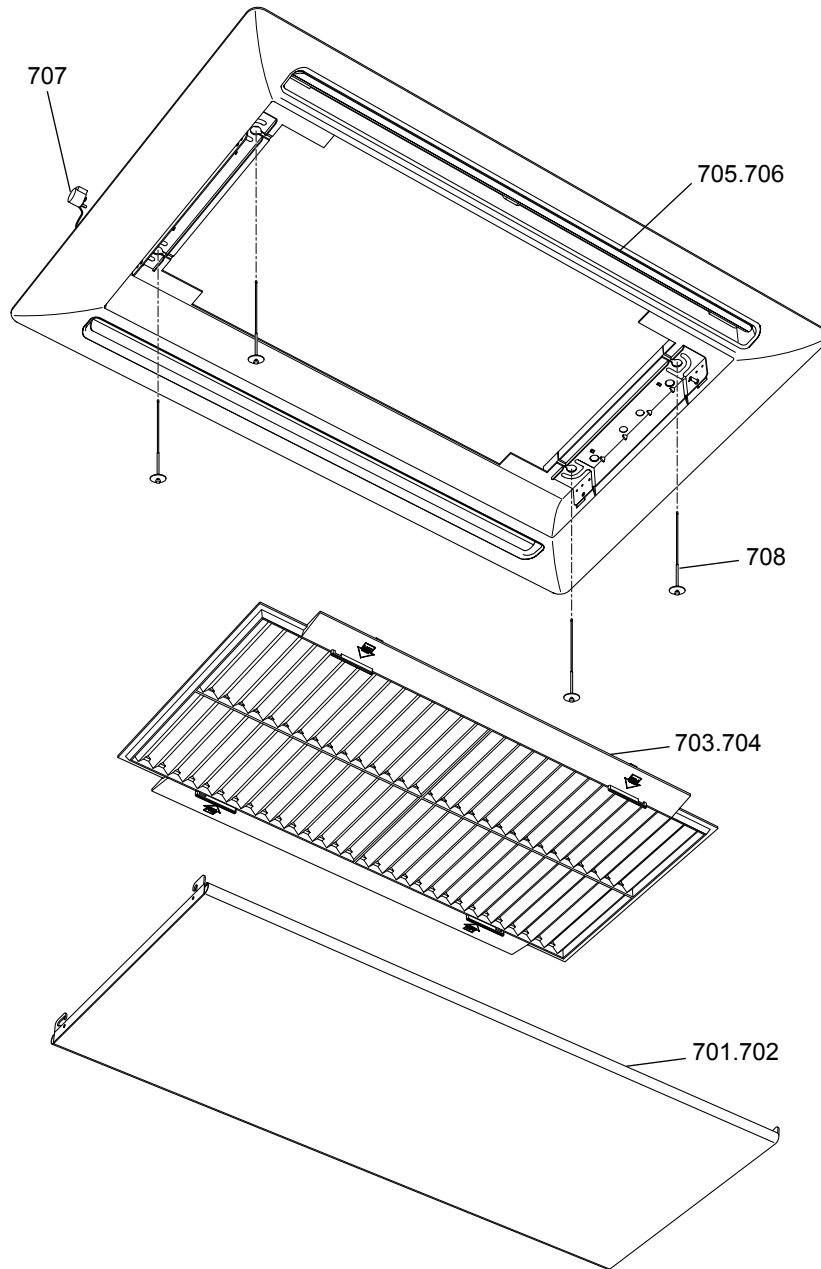
DRAIN PUMP PARTS



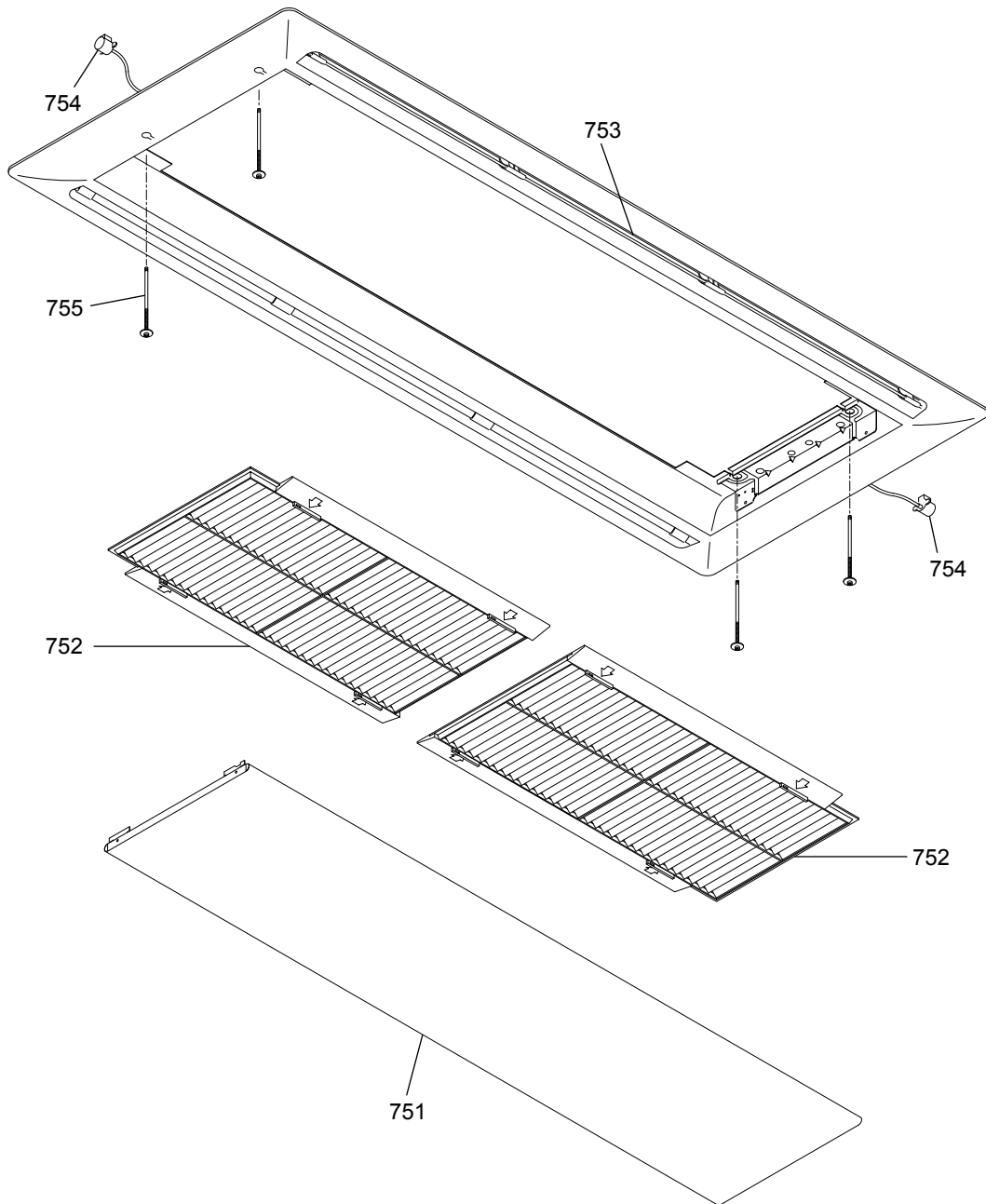
No.	Part No.	G : RoHS Apply Only W : RoHS Apply by Ruuning Change		Spec.	PLFY-P50VLMD-E	PLFY-P63VLMD-E	PLFY-P80VLMD-E	PLFY-P100VLMD-E	Dwg. No.	Price	Revision History
			Part Name								
601	R61 M91 668	G	Drain pump cover		1	1	1	1	W645424H02		
602	R63 M91 287	G	Drain sensor		1	1	1	1	W861228G07		
603	R61 E38 527	G	Hose for pump LVD		1	1	1	1	P645057X02		
604	R61 A75 218	G	Socket		1	1	1	1	W621301H01		
605	R63 6H4 539	G	Drain pump		1	1	1	1	P722101X01		

CMP-40VLW-B
CMP-63VLW-B

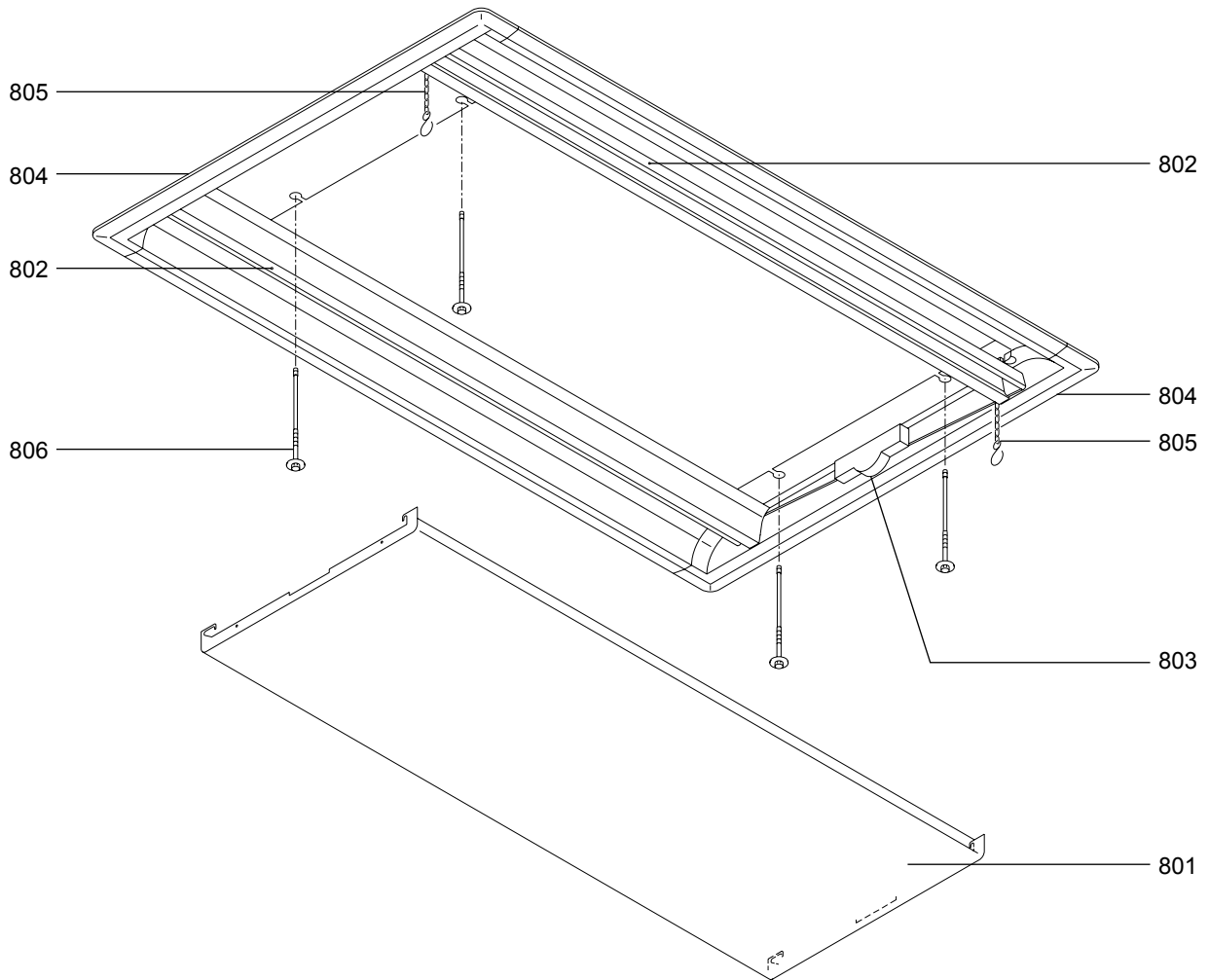
PANEL PARTS (OPTION)



No.	Part No.	G : RoHS Apply Only W : RoHS Apply by Running Change		Spec.	CMP-40VLW-B	CMP-63VLW-B	Dwg. No.	Price	Revision History
			Part Name						
701	R63 Y02 668	G	Service panel assy	45	1		W645049G06		
702	R63 Y03 668	G	Service panel	71		1	W649752G02		
703	R63 M95 500	G	Filter	45	1		W270911H07		
704	R63 M96 500	G	Filter	71		1	W270911H08		
705	R63 M95 679	G	Louver assy	45	2		W645431G03		
706	R63 M96 679	G	Louver assy	71		2	W645431G04		
707	R63 M95 220	G	Motor	vane MP20EA	2	2	P714816X01		
708	R63 E44 306	G	Step screw	M5	4	4	W861255H01		



No.	Part No.	G : RoHS Apply Only W : RoHS Apply by Running Change		Spec.	CMP-100VLW-B			Dwg. No.	Price	Revision History
			Part Name							
751	R63 016 668	G	Service panel assy		1			W645049G11		
752	R63 8A2 500	G	Filter		2			W273520H03		
753	R63 R02 679	G	Louver assy		2			W653787G03		
754	R63 M95 220	G	Motor	Vane MP20EA	2			P714816X01		
755	R63 E44 306	G	P Truss screw	Shoulder screw	4			W861255H01		



No.	Part No.	G : RoHS Apply Only W : RoHS Apply by Running Change		Spec.	CMP-125VLW-B		Dwg. No.	Price	Revision History
			Part Name						
801	R63 Y01 668	G	Panel assy		1		W645049G09		
802	R63 Y01 679	G	Louver assy		2		W653787G04		
803	R63 Y42 221	G	Motor assy		1		W885130G02		
804	R63 Y31 652	G	Panel end		2		W126483H02		
805	R63 Y01 631	G	Chain		2		W893032H01		
806	R63 E44 306	G	P truss screw		4		W861255H01		

