

PLFY-P-VLMD-E

PLFY-P-VLMD-E

1. SPECIFICATIONS	IU-F- 2
2. CAPACITY TABLES	
2-1a. Cooling capacity in combination with PUHY,PUY, PURY-P200, 250YGM	IU-F- 4
2-1b. Heating capacity in combination with PUHY, PURY-P200, 250YGM	IU-F- 6
2-2a. Cooling capacity in combination with PUHY,PUY,PURY-P300,350YGM / PUHY,PURY-P400YGM	IU-F- 7
2-2b. Heating capacity in combination with PUHY, PURY-P300, 350, 400YGM	IU-F- 9
2-3a. Cooling capacity in combination with PUHY,PURY-P450, 500, 550, 600, 650YGM	IU-F- 10
2-3b. Heating capacity in combination with PUHY,PURY-P450, 500, 550, 600, 650YGM	IU-F- 12
2-4a. Cooling capacity in combination with PQHY,PQRY-P200,250YGM, PQHY,PQRY-P400,500YSGM	IU-F- 13
2-4b. Heating capacity in combination with PQHY,PQRY-P200,250YGM, PQHY,PQRY-P400,500YSGM	IU-F- 14
2-5a. Cooling capacity in combination with PUMY-P100,125,140YHM	IU-F- 15
2-5b. Heating capacity in combination with PUMY-P100,125,140YHM	IU-F- 17
3. SOUND LEVELS	
3-1. Sound levels	IU-F- 18
3-2. NC curves	IU-F- 18
3-3. OA Intake-static pressure curves	IU-F- 20
3-4. Branch duct intake-static pressure curves	IU-F- 20
4. EXTERNAL DIMENSIONS	IU-F- 21
5. ELECTRICAL WIRING DIAGRAMS	IU-F- 24
6. TEMPERATURE/AIRFLOW DISTRIBUTIONS	
6-1. Temperature distributions	IU-F- 25
6-2. Airflow distributions	IU-F- 25

Cassette ceiling	P20	P25	P32	P40	P50	P63	P71	P80	P100	P125	P140	P200	P250
	0.8HP	1.0HP	1.3HP	1.6HP	2.0HP	2.5HP	2.8HP	3.2HP	4.0HP	5.0HP	5.6HP	8.0HP	10.0HP
PLFY-P-VLMD-E	●	●	●	●	●	●		●	●	●			

1. SPECIFICATIONS

R410A Data G2

Model			PLFY-P20VLMD-E	PLFY-P25VLMD-E	PLFY-P32VLMD-E	PLFY-P40VLMD-E	
Power source			1-phase 220-240V 50Hz, 1-phase 220-230V 60Hz				
Cooling capacity (Nominal)	*1	kW	2.2	2.8	3.6	4.5	
		kcal / h	1,900	2,400	3,100	3,900	
		Btu / h	7,500	9,600	12,300	15,400	
	*2	kcal / h	2,000	2,500	3,150	4,000	
		Power input	kW	0.072 / 0.075	0.072 / 0.075	0.072 / 0.075	0.081 / 0.085
Current input		A	0.36 / 0.37	0.36 / 0.37	0.36 / 0.37	0.40 / 0.42	
Heating capacity (Nominal)	*3	kW	2.5	3.2	4.0	5.0	
		kcal / h	2,200	2,800	3,400	4,300	
		Btu / h	8,500	10,900	13,600	17,100	
	Power input	kW	0.065 / 0.069	0.065 / 0.069	0.065 / 0.069	0.074 / 0.079	
		Current input		A	0.30 / 0.32	0.30 / 0.32	0.34 / 0.37
External finish			Unit : Galvanized				
External dimension H x W x D		mm	290 x 776 x 634		290 x 776 x 634		
		in.	11-7/16" x 30-9/16" x 25"		11-7/16" x 30-9/16" x 25"		
Net weight		kg (lb)	23 (51)	23 (51)	24 (53)	24 (53)	
Decoration panel	Model		CMP-40VLW-B	CMP-40VLW-B	CMP-40VLW-B	CMP-40VLW-B	
	External finish		ABS, MUNSELL (0.7Y 8.59/0.97), include Service Panel : Galvanized, MUNSELL (0.7Y 8.59/0.97)				
	Dimension		20 x 1,080 x 710				
	H x W x D		13/16" x 30-9/16" x 28"				
	Net Weight		6.5 (15)				
Heat exchanger			Cross fin				
FAN	Type x Quantity		Turbo fan x 1	Turbo fan x 1	Turbo fan x 1	Turbo fan x 1	
	External static press.	Pa	0	0	0	0	
		mmH ₂ O	0	0	0	0	
	Motor type		1-phase induction motor				
	Motor output		kW	0.015 (at 240V)	0.015 (at 240V)	0.015 (at 240V)	0.015 (at 240V)
	Driving mechanism		Direct-driven by motor				
	Airflow rate (Low-Mid-High)	m ³ / min	6.5 - 8.0 - 9.5	6.5 - 8.0 - 9.5	6.5 - 8.0 - 9.5	7.0 - 8.5 - 10.5	
		L / s	108 - 133 - 158	108 - 133 - 158	108 - 133 - 158	117 - 142 - 175	
cfm		230 - 283 - 335	230 - 283 - 335	230 - 283 - 335	247 - 300 - 371		
Noise level (Low-Mid-High) (measured in anechoic room)		dB <A>	27 - 30 - 33 (220, 240V)	27 - 30 - 33 (220,240V)	27 - 30 - 33 (220,240V)	29 - 33 - 36 (220,240V)	
		dB <A>	28 - 31 - 34 (230V)	28 - 31 - 34 (230V)	28 - 31 - 34 (230V)	30 - 34 - 37 (230V)	
Insulation material			Polystyrene foam, Polyethylene foam, Urethane foam				
Air filter			PP honeycomb fabric (long life filter)				
Protection device			Fuse				
Refrigerant control device			LEV				
Connectable outdoor unit			R410A, R407C, R22 CITY MULTI				
Diameter of refrigerant pipe	Liquid (R410A) (R22, R407C)	mm (in.)	ø6.35 (ø1/4") Flare	ø6.35 (ø1/4") Flare	ø6.35 (ø1/4") Flare	ø6.35 (ø1/4") Flare	
			ø6.35 (ø1/4") Flare	ø6.35 (ø1/4") Flare	ø6.35 (ø1/4") Flare	ø6.35 (ø1/4") Flare	
	Gas (R410A) (R22, R407C)	mm (in.)	ø12.7 (ø1/2") Flare	ø12.7 (ø1/2") Flare	ø12.7 (ø1/2") Flare	ø12.7 (ø1/2") Flare	
			ø12.7 (ø1/2") Flare	ø12.7 (ø1/2") Flare	ø12.7 (ø1/2") Flare	ø12.7 (ø1/2") Flare	
Diameter of drain pipe		mm (in.)	Unit drain pipe I.D.32 (1-1/4in.)				
Drawing	External		IU-W275-920				
	Wiring		IU-W653-952				
	Refrigerant cycle		-				
Standard attachment	Document		Installation Manual, Instruction Book				
	Accessory		Drain hose VP-25 (flexible joint)				
Remark	Optional parts						
	Decoration panel		CMP-40VLW-B	CMP-40VLW-B	CMP-40VLW-B	CMP-40VLW-B	
	OA duct flange		PAC-KH11OF	PAC-KH11OF	PAC-KH11OF	PAC-KH11OF	
	Installation		Details on foundation work, duct work, insulation work, electrical wiring, power source switch, and other items shall be referred to				

Note :

*1 Nominal cooling conditions

*2 Nominal cooling conditions

*3 Nominal heating conditions

Unit converter

Indoor : 27°CDB/19°CWB (81°FDB/66°FWB)

27°CDB/19.5°CWB (81°FDB/67°FWB)

20°CDB (68°FDB)

kcal/h = kW x 860

Outdoor : 35°CDB (95°FDB)

35°CDB (95°FDB)

7°CDB/6°CWB (45°FDB/43°FWB)

Btu/h = kW x 3,412

Pipe length : 7.5 m (24-9/16 ft)

5 m (16-3/8 ft)

7.5 m (24-9/16 ft)

cfm = m³/min x 35.31

Level difference : 0 m (0 ft)

0 m (0 ft)

0 m (0 ft)

lb = kg / 0.4536

* Nominal conditions *1, *3 are subject to JIS B8615-1.

* Due to continuing improvement, above specification may be subject to change without notice.

*Above specification data is subject to rounding variation.

Ref.: Spec_PLFY-P20VLMD-E_1

1. SPECIFICATIONS

R410A Data G2

Model			PLFY-P50VLMD-E	PLFY-P63VLMD-E	PLFY-P80VLMD-E	PLFY-P100VLMD-E	PLFY-P125VLMD-E	
Power source			1-phase 220-240V 50Hz, 1-phase 220-230V 60Hz					
Cooling capacity (Nominal)	*1	kW	5.6	7.1	9.0	11.2	14.0	
		kcal / h	4,800	6,100	7,700	9,600	12,000	
		Btu / h	19,100	24,200	30,700	38,200	47,800	
	*2	kcal / h	5,000	6,300	8,000	10,000	12,500	
		Power input	kW	0.082 / 0.086	0.101 / 0.105	0.147 / 0.156	0.157 / 0.186	0.28 / 0.28
Current input		A	0.41 / 0.43	0.49 / 0.51	0.72 / 0.74	0.75 / 0.88	1.35 / 1.35	
Heating capacity (Nominal)	*3	kW	6.3	8.0	10.0	12.5	16.0	
		kcal / h	5,400	6,900	8,600	10,800	13,800	
		Btu / h	21,500	27,300	34,100	42,700	54,600	
	Power input	kW	0.075 / 0.080	0.094 / 0.099	0.140 / 0.150	0.150 / 0.180	0.27 / 0.27	
		Current input	A	0.35 / 0.38	0.43 / 0.46	0.66 / 0.69	0.69 / 0.83	1.33 / 1.33
External finish			Unit : Galvanized					
External dimension H x W x D		mm	290 x 946 x 634		290 x 1,446 x 634		290 x 1,708 x 606	
		in.	11-7/16" x 37-1/4" x 25"		11-7/16" x 56-15/16" x 25"		11-7/16" x 67-1/4" x 23-7/8"	
Net weight		kg (lb)	27 (60)	28 (62)	44 (98)	47 (104)	56 (124)	
Decoration panel	Model		CMP-63VLW-B	CMP-63VLW-B	CMP-100VLW-B	CMP-100VLW-B	CMP-125VLW-B	
	External finish		ABS, MUNSELL (0.7Y 8.59/0.97), include Service Panel : Galvanized, MUNSELL (0.7Y 8.59/0.97)					
	Dimension	mm	20 x 1,250 x 710		20 x 1,750 x 710		20 x 2,010 x 710	
		in.	13/16" x 49-1/4" x 28"		13/16" x 56-15/16" x 28"		13/16" x 67-1/4" x 28"	
	Net Weight		kg (lb)	7.5 (17)		12.5 (28)		13.0 (29)
Heat exchanger			Cross fin					
FAN	Type x Quantity		Turbo fan x 1	Turbo fan x 1	Turbo fan x 2	Turbo fan x 2	Sirocco fan x 4	
	External static press.	Pa	0	0	0	0	0	
		mmHzO	0	0	0	0	0	
	Motor type		1-phase induction motor					
	Motor output		kW	0.020 (at 240V)	0.020 (at 240V)	0.020 (at 240V)	0.030 (at 240V)	0.078 x 2 (at 240V)
	Driving mechanism		Direct-driven by motor					
	Airflow rate (Low-Mid-High)	m ³ / min	9.0 - 11.0 - 12.5	10.0 - 13.0 - 15.5	15.5 - 18.5 - 22.0	17.5 - 21.0 - 25.0	24.0 - 27.0 - 30.0 - 33.0	
		L / s	150 - 183 - 208	167 - 217 - 258	258 - 308 - 367	292 - 350 - 417	400 - 450 - 500 - 550	
cfm		318 - 388 - 441	353 - 459 - 547	547 - 653 - 777	618 - 742 - 883	848 - 953 - 1,059 - 1,165		
Noise level (Low-Mid-High) (measured in anechoic room)	dB <A>	31 - 34 - 37 (220, 240V)	32 - 37 - 39 (220, 240V)	33 - 36 - 39 (220, 240V)	36 - 39 - 42 (220, 240V)	40 - 42 - 44 - 46 (220, 240V)		
	dB <A>	32 - 35 - 38 (230V)	33 - 38 - 40 (230V)	34 - 37 - 40 (230V)	37 - 41 - 43 (230V)	40 - 42 - 44 - 46 (230V)		
Insulation material			Polystyrene foam, Polyethylene foam, Urethane foam					
Air filter			PP honeycomb fabric (long life filter)					
Protection device			Fuse					
Refrigerant control device			LEV					
Connectable outdoor unit			R410A, R407C, R22 CITY MULTI					
Diameter of refrigerant pipe	Liquid (R410A) (R22, R407C)	mm (in.)	ø6.35 (ø1/4") Flare	ø9.52 (ø3/8") Flare	ø9.52 (ø3/8") Flare	ø9.52 (ø3/8") Flare	ø9.52 (ø3/8") Flare	
			ø9.52 (ø3/8") Flare	ø9.52 (ø3/8") Flare	ø9.52 (ø3/8") Flare	ø9.52 (ø3/8") Flare	ø9.52 (ø3/8") Flare	
	Gas (R410A) (R22, R407C)	mm (in.)	ø12.7 (ø1/2") Flare	ø15.88 (ø5/8") Flare	ø15.88 (ø5/8") Flare	ø15.88 (ø5/8") Flare	ø15.88 (ø5/8") Flare	
			ø15.88 (ø5/8") Flare	ø15.88 (ø5/8") Flare	ø15.88 (ø5/8") Flare	ø19.05 (ø3/4") Flare	ø19.05 (ø3/4") Flare	
Diameter of drain pipe		mm (in.)	Unit drain pipe I.D.32 (1-1/4in.)					
Drawing	External		IU-W275-920	IU-W275-920	IU-W275-920	IU-W275-920	IU-W275-921	
	Wiring		IU-W653-952	IU-W653-952	IU-W653-952	IU-W653-952	IU-W275-927	
	Refrigerant cycle		-	-	-	-	-	
Standard attachment	Document		Installation Manual, Instruction Book					
	Accessory		Drain hose VP-25 (flexible joint)					
Remark	Optional parts							
	Decoration panel		CMP-63VLW-B	CMP-63VLW-B	CMP-100VLW-B	CMP-100VLW-B	CMP-125VLW-B	
	OA duct flange		PAC-KH110F	PAC-KH110F	PAC-KH110F	PAC-KH110F	PAC-KH110F	
Installation		Details on foundation work, duct work, insulation work, electrical wiring, power source switch, and other items shall be referred to						

Note :	*1 Nominal cooling conditions	*2 Nominal cooling conditions	*3 Nominal heating conditions	Unit converter
	Indoor : 27°CDB/19°CWB (81°FDB/66°FWB)	27°CDB/19.5°CWB (81°FDB/67°FWB)	20°CDB (68°FDB)	kcal/h = kW x 860
	Outdoor : 35°CDB (95°FDB)	35°CDB (95°FDB)	7°CDB/6°CWB (45°FDB/43°FWB)	Btu/h = kW x 3,412
	Pipe length : 7.5 m (24-9/16 ft)	5 m (16-3/8 ft)	7.5 m (24-9/16 ft)	cfm = m ³ /min x 35.31
Level difference : 0 m (0 ft)	0 m (0 ft)	0 m (0 ft)	lb = kg / 0.4536	
* Nominal conditions *1, *3 are subject to JIS B8615-1.				*Above specification data is subject to rounding variation.
* Due to continuing improvement, above specification may be subject to change without notice.				

Ref.: Spec_PLFY-P20VLMD-E_2

2. CAPACITY TABLES

R410A Data G2

2-1a. Cooling capacity in combination with PUHY,PUY,PURY-P200,250YGM

PLFY-P-VLMD-E

CA : Capacity(kW) SHC : Sensible Heat Capacity(kW)

Model size (Rated kW)	Outdoor air temp.		Indoor air temp.														
			71°FDB / 59°FWB		73°FDB / 61°FWB		77°FDB / 64°FWB		81°FDB / 66°FWB		82°FDB / 68°FWB		86°FDB / 72°FWB		90°FDB / 75°FWB		
	°FDB	°CDB	21.5°CDB / 15°CWB		23°CDB / 16°CWB		25°CDB / 18°CWB		27°CDB / 19°CWB		28°CDB / 20°CWB		30°CDB / 22°CWB		32°CDB / 24°CWB		
		CA	SHC	CA	SHC	CA	SHC	CA	SHC	CA	SHC	CA	SHC	CA	SHC	CA	SHC
80 (9.0)	68	20.0	8.6	6.1	8.9	6.2	9.5	6.2	9.7	6.2	10.0	6.5	10.6	6.4	11.4	6.3	
	73	22.5	8.6	6.1	8.9	6.2	9.5	6.2	9.7	6.2	10.0	6.5	10.6	6.4	11.4	6.3	
	77	25.0	8.6	6.1	8.9	6.2	9.5	6.2	9.7	6.2	9.9	6.4	10.5	6.3	11.2	6.2	
	82	27.5	8.5	6.0	8.8	6.2	9.3	6.1	9.5	6.2	9.8	6.4	10.3	6.2	11.0	6.2	
	86	30.0	8.4	6.0	8.6	6.1	9.1	6.0	9.4	6.1	9.6	6.3	10.1	6.2	10.8	6.1	
	91	32.5	8.2	5.9	8.5	6.0	8.9	5.9	9.1	6.0	9.4	6.2	9.9	6.1	10.5	6.0	
	95	35.0	8.1	5.8	8.3	5.9	8.8	5.9	9.0	5.9	9.2	6.1	9.7	6.0	10.3	5.9	
	100	37.5	7.9	5.7	8.1	5.8	8.6	5.8	8.8	5.8	9.0	6.0	9.5	5.9	10.1	5.8	
	104	40.0	7.7	5.6	8.0	5.8	8.5	5.7	8.6	5.8	8.9	6.0	9.3	5.8	9.9	5.8	
	110	43.0	7.6	5.5	7.8	5.7	8.2	5.6	8.4	5.6	8.6	5.9	9.1	5.8	9.6	5.7	
100 (11.2)	68	20.0	10.6	7.7	11.0	7.9	11.8	7.9	12.1	7.9	12.5	8.2	13.2	8.1	14.2	8.1	
	73	22.5	10.6	7.7	11.0	7.9	11.8	7.9	12.1	7.9	12.5	8.2	13.2	8.1	14.2	8.1	
	77	25.0	10.6	7.7	11.0	7.9	11.8	7.9	12.1	7.9	12.4	8.2	13.1	8.1	13.9	7.9	
	82	27.5	10.6	7.7	10.9	7.9	11.5	7.8	11.9	7.8	12.2	8.1	12.8	8.0	13.7	7.9	
	86	30.0	10.4	7.6	10.7	7.8	11.3	7.7	11.6	7.7	11.9	8.0	12.5	7.9	13.4	7.8	
	91	32.5	10.2	7.5	10.5	7.7	11.1	7.6	11.4	7.6	11.7	7.9	12.3	7.8	13.1	7.7	
	95	35.0	10.0	7.4	10.3	7.6	10.9	7.5	11.2	7.6	11.5	7.8	12.1	7.7	12.8	7.6	
	100	37.5	9.8	7.3	10.1	7.4	10.7	7.4	10.9	7.4	11.3	7.7	11.9	7.6	12.5	7.5	
	104	40.0	9.6	7.2	9.9	7.4	10.5	7.3	10.8	7.4	11.1	7.6	11.6	7.5	12.3	7.4	
	110	43.0	9.4	7.1	9.7	7.3	10.2	7.2	10.4	7.2	10.8	7.5	11.3	7.4	12.0	7.3	
125 (14.0)	68	20.0	13.3	9.8	13.8	10.1	14.7	10.0	15.1	10.1	15.6	10.5	16.5	10.3	17.7	10.3	
	73	22.5	13.3	9.8	13.8	10.1	14.7	10.0	15.1	10.1	15.6	10.5	16.5	10.3	17.7	10.3	
	77	25.0	13.3	9.8	13.8	10.1	14.7	10.0	15.1	10.1	15.5	10.4	16.4	10.3	17.4	10.1	
	82	27.5	13.2	9.7	13.7	10.0	14.4	9.9	14.8	10.0	15.3	10.4	16.0	10.2	17.1	10.0	
	86	30.0	13.0	9.6	13.4	9.9	14.2	9.8	14.6	9.9	14.9	10.2	15.7	10.0	16.7	9.9	
	91	32.5	12.7	9.5	13.2	9.8	13.9	9.6	14.2	9.7	14.6	10.1	15.4	9.9	16.4	9.8	
	95	35.0	12.5	9.4	12.9	9.6	13.7	9.5	14.0	9.6	14.4	10.0	15.1	9.8	16.0	9.6	
	100	37.5	12.3	9.2	12.6	9.5	13.4	9.4	13.7	9.5	14.1	9.9	14.8	9.7	15.7	9.5	
	104	40.0	12.0	9.1	12.4	9.4	13.2	9.3	13.4	9.4	13.9	9.8	14.5	9.6	15.4	9.4	
	110	43.0	11.8	9.0	12.1	9.3	12.8	9.1	13.0	9.2	13.4	9.6	14.1	9.4	15.0	9.3	

kcal/h = kW x 860, Btu/h = kW x 3,412

2. CAPACITY TABLES

R410A Data G2

2-1b. Heating capacity in combination with PUHY,PURY-P200,250YGM

PLFY-P-VLMD-E

SHC : Sensible Heat Capacity(kW)

Model size (Rated kW)	Outdoor air temp.		Indoor air temp.			
			59 °FDB	68 °FDB	77 °FDB	81 °FDB
			15.0°CDB	20.0°CDB	25.0°CDB	27.0°CDB
	°FWB	°CWB	SHC	SHC	SHC	SHC
20 (2.2)	-4	-20.0	1.3	1.3	1.3	1.3
	5	-15.0	1.6	1.5	1.5	1.5
	14	-10.0	1.8	1.8	1.8	1.7
	23	-5.0	2.1	2.1	2.0	1.8
	32	0.0	2.4	2.4	2.0	1.8
	37	2.5	2.5	2.5	2.0	1.8
	43	6.0	2.6	2.5	2.0	1.8
	46	7.5	2.7	2.5	2.0	1.8
	50	10.0	2.9	2.5	2.0	1.8
	55	12.5	3.0	2.5	2.0	1.8
60	15.5	3.2	2.5	2.0	1.8	
25 (2.8)	-4	-20.0	1.6	1.6	1.6	1.6
	5	-15.0	2.0	2.0	1.9	1.9
	14	-10.0	2.3	2.3	2.2	2.2
	23	-5.0	2.7	2.7	2.6	2.2
	32	0.0	3.0	3.0	2.6	2.2
	37	2.5	3.2	3.2	2.6	2.2
	43	6.0	3.3	3.2	2.6	2.2
	46	7.5	3.4	3.2	2.6	2.2
	50	10.0	3.6	3.2	2.6	2.2
	55	12.5	3.9	3.2	2.6	2.2
60	15.5	4.1	3.2	2.6	2.2	
32 (3.6)	-4	-20.0	2.1	2.0	2.0	2.0
	5	-15.0	2.5	2.4	2.4	2.4
	14	-10.0	2.9	2.9	2.8	2.7
	23	-5.0	3.4	3.3	3.2	2.8
	32	0.0	3.8	3.8	3.2	2.8
	37	2.5	4.0	4.0	3.2	2.8
	43	6.0	4.2	4.0	3.2	2.8
	46	7.5	4.3	4.0	3.2	2.8
	50	10.0	4.6	4.0	3.2	2.8
	55	12.5	4.8	4.0	3.2	2.8
60	15.5	5.1	4.0	3.2	2.8	
40 (4.5)	-4	-20.0	2.6	2.5	2.5	2.5
	5	-15.0	3.1	3.1	3.0	3.0
	14	-10.0	3.7	3.6	3.5	3.4
	23	-5.0	4.2	4.2	4.0	3.5
	32	0.0	4.7	4.7	4.0	3.5
	37	2.5	5.0	5.0	4.0	3.5
	43	6.0	5.2	5.0	4.0	3.5
	46	7.5	5.4	5.0	4.0	3.5
	50	10.0	5.7	5.0	4.0	3.5
	55	12.5	6.0	5.0	4.0	3.5
60	15.5	6.4	5.0	4.0	3.5	
50 (5.6)	-4	-20.0	3.2	3.2	3.2	3.2
	5	-15.0	3.9	3.8	3.8	3.7
	14	-10.0	4.6	4.5	4.4	4.3
	23	-5.0	5.3	5.2	5.0	4.4
	32	0.0	6.0	5.9	5.0	4.4
	37	2.5	6.3	6.2	5.0	4.4
	43	6.0	6.6	6.3	5.0	4.4
	46	7.5	6.8	6.3	5.0	4.4
	50	10.0	7.2	6.3	5.0	4.4
	55	12.5	7.6	6.3	5.0	4.4
60	15.5	8.1	6.3	5.0	4.4	
63 (7.1)	-4	-20.0	4.1	4.0	4.0	4.0
	5	-15.0	5.0	4.9	4.8	4.7
	14	-10.0	5.8	5.8	5.6	5.5
	23	-5.0	6.7	6.6	6.4	5.6
	32	0.0	7.6	7.5	6.4	5.6
	37	2.5	8.0	7.9	6.4	5.6
	43	6.0	8.3	8.0	6.4	5.6
	46	7.5	8.6	8.0	6.4	5.6
	50	10.0	9.1	8.0	6.4	5.6
	55	12.5	9.6	8.0	6.4	5.6
60	15.5	10.2	8.0	6.4	5.6	

Model size (Rated kW)	Outdoor air temp.		Indoor air temp.			
			59 °FDB	68 °FDB	77 °FDB	81 °FDB
			15.0°CDB	20.0°CDB	25.0°CDB	27.0°CDB
	°FWB	°CWB	SHC	SHC	SHC	SHC
80 (9.0)	-4	-20.0	5.2	5.0	5.0	5.0
	5	-15.0	6.2	6.1	6.0	5.9
	14	-10.0	7.3	7.2	7.0	6.9
	23	-5.0	8.4	8.3	8.0	7.0
	32	0.0	9.5	9.4	8.0	7.0
	37	2.5	10.0	9.9	8.0	7.0
	43	6.0	10.4	10.0	8.0	7.0
	46	7.5	10.8	10.0	8.0	7.0
	50	10.0	11.4	10.0	8.0	7.0
	55	12.5	12.1	10.0	8.0	7.0
60	15.5	12.8	10.0	8.0	7.0	
100 (11.2)	-4	-20.0	6.4	6.3	6.3	6.3
	5	-15.0	7.8	7.6	7.5	7.4
	14	-10.0	9.1	9.0	8.8	8.6
	23	-5.0	10.5	10.4	10.0	8.8
	32	0.0	11.8	11.8	10.0	8.8
	37	2.5	12.5	12.4	10.0	8.8
	43	6.0	13.0	12.5	10.0	8.8
	46	7.5	13.4	12.5	10.0	8.8
	50	10.0	14.3	12.5	10.0	8.8
	55	12.5	15.1	12.5	10.0	8.8
60	15.5	16.0	12.5	10.0	8.8	
125 (14.0)	-4	-20.0	8.2	8.0	8.0	8.0
	5	-15.0	9.9	9.8	9.6	9.4
	14	-10.0	11.7	11.5	11.2	11.0
	23	-5.0	13.4	13.3	12.8	11.2
	32	0.0	15.1	15.0	12.8	11.2
	37	2.5	16.0	15.8	12.8	11.2
	43	6.0	16.6	16.0	12.8	11.2
	46	7.5	17.2	16.0	12.8	11.2
	50	10.0	18.2	16.0	12.8	11.2
	55	12.5	19.3	16.0	12.8	11.2
60	15.5	20.5	16.0	12.8	11.2	

kcal/h = kW x 860, Btu/h = kW x 3,412

2. CAPACITY TABLES

R410A Data G2

2-2a. Cooling capacity in combination with PUHY,PUY,PURY-P300,350YGM / PUHY,PURY-P400YGM

PLFY-P-VLMD-E

CA : Capacity(kW) SHC : Sensible Heat Capacity(kW)

Table with 17 columns and 118 rows. Columns include Model size (Rated kW), Outdoor air temp. (°FDB, °CDB), Indoor air temp. (9 categories), and Capacity/SHC (CA, SHC). Rows are grouped by model size: 20 (2.2), 25 (2.8), 32 (3.6), 40 (4.5), 50 (5.6), and 63 (7.1).

kcal/h = kW x 860, Btu/h = kW x 3,412

2. CAPACITY TABLES

R410A Data G2

2-2a. Cooling capacity in combination with PUHY,PUY,PURY-P300,350YGM / PUHY,PURY-P400YGM

PLFY-P-VLMD-E

CA : Capacity(kW) SHC : Sensible Heat Capacity(kW)

Model size (Rated kW)	Outdoor air temp.		Indoor air temp.													
			71°FDB / 59°FWB		73°FDB / 61°FWB		77°FDB / 64°FWB		81°FDB / 66°FWB		82°FDB / 68°FWB		86°FDB / 72°FWB		90°FDB / 75°FWB	
			21.5°CDB / 15°CWB		23°CDB / 16°CWB		25°CDB / 18°CWB		27°CDB / 19°CWB		28°CDB / 20°CWB		30°CDB / 22°CWB		32°CDB / 24°CWB	
	°FDB	°CDB	CA	SHC	CA	SHC	CA	SHC	CA	SHC	CA	SHC	CA	SHC	CA	SHC
80 (9.0)	68	20.0	8.7	6.1	9.0	6.3	9.7	6.3	10.1	6.4	10.4	6.6	11.0	6.5	11.7	6.5
	73	22.5	8.7	6.1	9.0	6.3	9.6	6.3	9.9	6.3	10.2	6.6	10.8	6.5	11.5	6.4
	77	25.0	8.6	6.1	8.8	6.2	9.4	6.2	9.7	6.2	10.0	6.5	10.6	6.4	11.3	6.3
	82	27.5	8.4	6.0	8.6	6.1	9.2	6.1	9.5	6.2	9.8	6.4	10.4	6.3	11.0	6.2
	86	30.0	8.3	5.9	8.5	6.0	9.0	6.0	9.4	6.1	9.6	6.3	10.3	6.2	10.8	6.1
	91	32.5	8.1	5.8	8.3	6.0	8.9	5.9	9.2	6.0	9.5	6.2	10.0	6.1	10.6	6.0
	95	35.0	8.0	5.8	8.1	5.9	8.6	5.8	9.0	5.9	9.3	6.1	9.8	6.0	10.4	5.9
	100	37.5	7.9	5.7	8.0	5.8	8.5	5.7	8.8	5.8	9.1	6.1	9.6	6.0	10.2	5.9
	104	40.0	7.8	5.7	7.8	5.7	8.3	5.7	8.6	5.7	9.8	6.4	9.4	5.9	9.9	5.8
110	43.0	7.6	5.5	7.6	5.6	8.1	5.6	8.4	5.6	8.6	5.8	9.1	5.8	9.7	5.7	
100 (11.2)	68	20.0	10.9	7.8	11.3	8.0	12.1	8.0	12.5	8.1	12.9	8.4	13.7	8.3	14.6	8.2
	73	22.5	10.8	7.8	11.2	8.0	11.9	7.9	12.3	8.0	12.7	8.3	13.5	8.2	14.3	8.1
	77	25.0	10.7	7.7	11.0	7.9	11.7	7.8	12.1	7.9	12.5	8.2	13.2	8.1	14.0	8.0
	82	27.5	10.5	7.6	10.8	7.8	11.5	7.7	11.9	7.8	12.2	8.1	13.0	8.0	13.7	7.9
	86	30.0	10.3	7.5	10.5	7.7	11.3	7.6	11.6	7.7	12.0	8.0	12.8	7.9	13.4	7.8
	91	32.5	10.1	7.4	10.4	7.6	11.0	7.5	11.4	7.6	11.8	7.9	12.4	7.8	13.2	7.7
	95	35.0	10.0	7.3	10.1	7.5	10.8	7.4	11.2	7.6	11.5	7.8	12.2	7.7	12.9	7.6
	100	37.5	9.9	7.3	9.9	7.4	10.6	7.3	10.9	7.4	11.3	7.7	12.0	7.6	12.7	7.5
	104	40.0	9.7	7.2	9.7	7.3	10.4	7.2	10.7	7.3	12.2	8.1	11.7	7.5	12.4	7.4
110	43.0	9.4	7.1	9.4	7.1	10.1	7.1	10.4	7.2	10.7	7.5	11.4	7.4	12.0	7.3	
125 (14.0)	68	20.0	13.6	9.9	14.1	10.2	15.1	10.2	15.7	10.4	16.2	10.7	17.2	10.6	18.2	10.4
	73	22.5	13.5	9.9	14.0	10.2	14.9	10.1	15.4	10.2	15.9	10.6	16.8	10.5	17.9	10.3
	77	25.0	13.4	9.8	13.7	10.0	14.6	10.0	15.1	10.1	15.6	10.5	16.5	10.3	17.5	10.2
	82	27.5	13.1	9.7	13.4	9.9	14.4	9.8	14.8	10.0	15.3	10.4	16.2	10.2	17.2	10.1
	86	30.0	12.9	9.5	13.2	9.8	14.1	9.7	14.6	9.9	15.0	10.2	16.0	10.1	16.8	9.9
	91	32.5	12.7	9.4	13.0	9.7	13.8	9.6	14.3	9.8	14.7	10.1	15.5	10.0	16.5	9.8
	95	35.0	12.5	9.3	12.7	9.5	13.4	9.4	14.0	9.6	14.4	10.0	15.3	9.9	16.2	9.7
	100	37.5	12.3	9.3	12.4	9.4	13.2	9.3	13.7	9.5	14.1	9.9	15.0	9.7	15.8	9.6
	104	40.0	12.1	9.2	12.1	9.3	13.0	9.2	13.4	9.4	15.2	10.3	14.6	9.6	15.5	9.4
110	43.0	11.8	9.0	11.8	9.1	12.6	9.1	13.0	9.2	13.4	9.6	14.2	9.4	15.1	9.3	

kcal/h = kW x 860, Btu/h = kW x 3,412

2. CAPACITY TABLES

R410A Data G2

2-2b. Heating capacity in combination with PUHY,PURY-P300,350,400YGM

PLFY-P-VLMD-E

SHC : Sensible Heat Capacity(kW)

Model size (Rated kW)	Outdoor air temp.		Indoor air temp.			
			59 °FDB	68 °FDB	77 °FDB	81 °FDB
			15.0°CDB	20.0°CDB	25.0°CDB	27.0°CDB
	°FWB	°CWB	SHC	SHC	SHC	SHC
20 (2.2)	-4	-20.0	1.3	1.3	1.3	1.2
	5	-15.0	1.5	1.5	1.5	1.5
	14	-10.0	1.8	1.8	1.7	1.6
	23	-5.0	2.0	2.0	1.9	1.6
	32	0.0	2.3	2.3	1.9	1.6
	37	2.5	2.4	2.4	1.9	1.6
	43	6.0	2.6	2.5	1.9	1.6
	46	7.5	2.7	2.5	1.9	1.6
	50	10.0	2.8	2.5	1.9	1.6
	55	12.5	2.9	2.5	1.9	1.6
60	15.5	2.9	2.5	1.9	1.6	
25 (2.8)	-4	-20.0	1.7	1.6	1.6	1.5
	5	-15.0	1.9	1.9	1.9	1.9
	14	-10.0	2.2	2.2	2.2	2.0
	23	-5.0	2.6	2.6	2.4	2.0
	32	0.0	2.9	2.9	2.4	2.0
	37	2.5	3.1	3.0	2.4	2.0
	43	6.0	3.3	3.2	2.4	2.0
	46	7.5	3.4	3.2	2.4	2.0
	50	10.0	3.5	3.2	2.4	2.0
	55	12.5	3.7	3.2	2.4	2.0
60	15.5	3.7	3.2	2.4	2.0	
32 (3.6)	-4	-20.0	2.1	2.0	2.0	1.9
	5	-15.0	2.4	2.4	2.4	2.3
	14	-10.0	2.8	2.8	2.7	2.6
	23	-5.0	3.2	3.2	3.0	2.6
	32	0.0	3.6	3.6	3.0	2.6
	37	2.5	3.8	3.8	3.0	2.6
	43	6.0	4.1	4.0	3.0	2.6
	46	7.5	4.2	4.0	3.0	2.6
	50	10.0	4.4	4.0	3.0	2.6
	55	12.5	4.6	4.0	3.0	2.6
60	15.5	4.6	4.0	3.0	2.6	
40 (4.5)	-4	-20.0	2.6	2.5	2.5	2.4
	5	-15.0	3.0	3.0	3.0	2.9
	14	-10.0	3.5	3.5	3.4	3.2
	23	-5.0	4.0	4.0	3.8	3.2
	32	0.0	4.5	4.5	3.8	3.2
	37	2.5	4.8	4.7	3.8	3.2
	43	6.0	5.1	5.0	3.8	3.2
	46	7.5	5.3	5.0	3.8	3.2
	50	10.0	5.5	5.0	3.8	3.2
	55	12.5	5.8	5.0	3.8	3.2
60	15.5	5.8	5.0	3.8	3.2	
50 (5.6)	-4	-20.0	3.3	3.2	3.2	3.0
	5	-15.0	3.8	3.8	3.8	3.7
	14	-10.0	4.4	4.4	4.3	4.0
	23	-5.0	5.0	5.0	4.7	4.0
	32	0.0	5.7	5.7	4.7	4.0
	37	2.5	6.0	6.0	4.7	4.0
	43	6.0	6.5	6.3	4.7	4.0
	46	7.5	6.7	6.3	4.7	4.0
	50	10.0	7.0	6.3	4.7	4.0
	55	12.5	7.2	6.3	4.7	4.0
60	15.5	7.2	6.3	4.7	4.0	
63 (7.1)	-4	-20.0	4.2	4.0	4.0	3.8
	5	-15.0	4.8	4.8	4.8	4.6
	14	-10.0	5.6	5.6	5.5	5.1
	23	-5.0	6.4	6.4	6.0	5.1
	32	0.0	7.2	7.2	6.0	5.1
	37	2.5	7.6	7.6	6.0	5.1
	43	6.0	8.2	8.0	6.0	5.1
	46	7.5	8.5	8.0	6.0	5.1
	50	10.0	8.8	8.0	6.0	5.1
	55	12.5	9.2	8.0	6.0	5.1
60	15.5	9.2	8.0	6.0	5.1	

Model size (Rated kW)	Outdoor air temp.		Indoor air temp.			
			59 °FDB	68 °FDB	77 °FDB	81 °FDB
			15.0°CDB	20.0°CDB	25.0°CDB	27.0°CDB
	°FWB	°CWB	SHC	SHC	SHC	SHC
80 (9.0)	-4	-20.0	5.2	5.0	5.0	4.8
	5	-15.0	6.0	6.0	6.0	5.8
	14	-10.0	7.0	7.0	6.9	6.4
	23	-5.0	8.0	8.0	7.5	6.4
	32	0.0	9.0	9.0	7.5	6.4
	37	2.5	9.6	9.5	7.5	6.4
	43	6.0	10.3	10.0	7.5	6.4
	46	7.5	10.6	10.0	7.5	6.4
	50	10.0	11.1	10.0	7.5	6.4
	55	12.5	11.5	10.0	7.5	6.4
60	15.5	11.5	10.0	7.5	6.4	
100 (11.2)	-4	-20.0	6.5	6.3	6.3	6.0
	5	-15.0	7.5	7.5	7.5	7.3
	14	-10.0	8.8	8.8	8.6	8.0
	23	-5.0	10.0	10.0	9.4	8.0
	32	0.0	11.3	11.3	9.4	8.0
	37	2.5	11.9	11.8	9.4	8.0
	43	6.0	12.8	12.5	9.4	8.0
	46	7.5	13.3	12.5	9.4	8.0
	50	10.0	13.8	12.5	9.4	8.0
	55	12.5	14.4	12.5	9.4	8.0
60	15.5	14.4	12.5	9.4	8.0	
125 (14.0)	-4	-20.0	8.3	8.0	8.0	7.7
	5	-15.0	9.6	9.6	9.6	9.3
	14	-10.0	11.2	11.2	11.0	10.2
	23	-5.0	12.8	12.8	12.0	10.2
	32	0.0	14.4	14.4	12.0	10.2
	37	2.5	15.3	15.1	12.0	10.2
	43	6.0	16.4	16.0	12.0	10.2
	46	7.5	17.0	16.0	12.0	10.2
	50	10.0	17.7	16.0	12.0	10.2
	55	12.5	18.4	16.0	12.0	10.2
60	15.5	18.4	16.0	12.0	10.2	

kcal/h = kW x 860, Btu/h = kW x 3,412

2. CAPACITY TABLES

R410A Data G2

2-3a. Cooling capacity in combination with PUHY,PURY-P450,500,550,600,650YGM

PLFY-P-VLMD-E

CA : Capacity(kW) SHC : Sensible Heat Capacity(kW)

Model size (Rated kW)	Outdoor air temp.		Indoor air temp.													
			71 °FDB / 59°FWB		73°FDB / 61°FWB		77°FDB / 64°FWB		81°FDB / 66°FWB		82°FDB / 68°FWB		86°FDB / 72°FWB		90°FDB / 75°FWB	
			21.5°CDB / 15°CWB	23°CDB / 16°CWB	25°CDB / 18°CWB	27°CDB / 19°CWB	28°CDB / 20°CWB	30°CDB / 22°CWB	32°CDB / 24°CWB							
	°FDB	°CDB	CA	SHC	CA	SHC	CA	SHC	CA	SHC	CA	SHC	CA	SHC	CA	SHC
20 (2.2)	68	20.0	2.1	1.7	2.1	1.8	2.3	1.8	2.4	1.8	2.5	1.9	2.6	1.9	2.8	1.8
	73	22.5	2.1	1.7	2.1	1.8	2.3	1.8	2.3	1.8	2.4	1.9	2.6	1.9	2.7	1.8
	77	25.0	2.0	1.7	2.1	1.8	2.2	1.7	2.3	1.8	2.4	1.9	2.6	1.8	2.7	1.8
	82	27.5	2.0	1.7	2.1	1.7	2.2	1.7	2.3	1.8	2.4	1.9	2.5	1.8	2.6	1.8
	86	30.0	2.0	1.7	2.0	1.7	2.2	1.7	2.3	1.8	2.4	1.8	2.5	1.8	2.7	1.8
	91	32.5	2.0	1.7	2.0	1.7	2.2	1.7	2.2	1.8	2.3	1.8	2.5	1.8	2.6	1.8
	95	35.0	2.0	1.7	2.0	1.7	2.1	1.7	2.2	1.7	2.3	1.8	2.5	1.8	2.6	1.8
	100	37.5	1.9	1.7	2.0	1.7	2.1	1.7	2.2	1.7	2.3	1.8	2.4	1.8	2.6	1.8
	104	40.0	1.9	1.6	1.9	1.7	2.1	1.7	2.1	1.7	2.2	1.8	2.4	1.8	2.6	1.8
	110	43.0	1.9	1.6	1.9	1.7	2.1	1.7	2.1	1.7	2.2	1.8	2.4	1.8	2.6	1.8
25 (2.8)	68	20.0	2.6	2.0	2.7	2.1	2.9	2.0	3.0	2.1	3.1	2.2	3.3	2.1	3.5	2.1
	73	22.5	2.6	2.0	2.7	2.0	2.9	2.0	3.0	2.1	3.1	2.1	3.3	2.1	3.5	2.1
	77	25.0	2.6	2.0	2.7	2.0	2.9	2.0	2.9	2.0	3.1	2.1	3.2	2.1	3.5	2.1
	82	27.5	2.6	2.0	2.6	2.0	2.8	2.0	2.9	2.0	3.0	2.1	3.2	2.1	3.4	2.0
	86	30.0	2.5	1.9	2.6	2.0	2.8	2.0	2.9	2.0	3.0	2.1	3.2	2.1	3.4	2.1
	91	32.5	2.5	1.9	2.6	2.0	2.7	2.0	2.8	2.0	3.0	2.1	3.2	2.1	3.4	2.0
	95	35.0	2.5	1.9	2.5	2.0	2.7	2.0	2.8	2.0	2.9	2.1	3.1	2.1	3.3	2.0
	100	37.5	2.5	1.9	2.5	1.9	2.7	1.9	2.8	2.0	2.9	2.1	3.1	2.0	3.3	2.0
	104	40.0	2.4	1.9	2.5	1.9	2.7	1.9	2.7	1.9	2.9	2.0	3.1	2.0	3.3	2.0
	110	43.0	2.4	1.9	2.5	1.9	2.6	1.9	2.7	1.9	2.8	2.0	3.0	2.0	3.2	2.0
32 (3.6)	68	20.0	3.4	2.5	3.5	2.6	3.7	2.5	3.9	2.6	4.0	2.7	4.2	2.7	4.5	2.6
	73	22.5	3.4	2.5	3.5	2.5	3.7	2.5	3.8	2.6	4.0	2.7	4.2	2.6	4.5	2.6
	77	25.0	3.3	2.5	3.4	2.5	3.7	2.5	3.8	2.5	3.9	2.7	4.2	2.6	4.4	2.6
	82	27.5	3.3	2.4	3.4	2.5	3.6	2.5	3.7	2.5	3.9	2.6	4.1	2.6	4.3	2.5
	86	30.0	3.3	2.4	3.3	2.5	3.6	2.5	3.7	2.5	3.9	2.6	4.1	2.6	4.4	2.6
	91	32.5	3.2	2.4	3.3	2.5	3.5	2.4	3.6	2.5	3.8	2.6	4.1	2.6	4.3	2.5
	95	35.0	3.2	2.4	3.3	2.4	3.5	2.4	3.6	2.5	3.7	2.6	4.0	2.6	4.3	2.5
	100	37.5	3.2	2.4	3.2	2.4	3.5	2.4	3.5	2.4	3.7	2.6	4.0	2.5	4.2	2.5
	104	40.0	3.1	2.3	3.2	2.4	3.4	2.4	3.5	2.4	3.7	2.5	4.0	2.5	4.2	2.5
	110	43.0	3.1	2.3	3.2	2.4	3.4	2.4	3.5	2.4	3.6	2.5	3.9	2.5	4.2	2.5
40 (4.5)	68	20.0	4.3	2.9	4.4	3.0	4.7	3.0	4.8	3.0	5.0	3.1	5.3	3.1	5.7	3.0
	73	22.5	4.2	2.9	4.3	3.0	4.6	3.0	4.8	3.0	5.0	3.1	5.3	3.1	5.6	3.0
	77	25.0	4.2	2.9	4.3	2.9	4.6	2.9	4.7	3.0	4.9	3.1	5.2	3.0	5.6	3.0
	82	27.5	4.1	2.9	4.2	2.9	4.5	2.9	4.7	2.9	4.9	3.1	5.2	3.0	5.4	2.9
	86	30.0	4.1	2.8	4.2	2.9	4.5	2.9	4.6	2.9	4.8	3.0	5.1	3.0	5.4	3.0
	91	32.5	4.1	2.8	4.1	2.9	4.4	2.8	4.5	2.9	4.8	3.0	5.1	3.0	5.4	2.9
	95	35.0	4.0	2.8	4.1	2.8	4.4	2.8	4.5	2.8	4.7	3.0	5.0	3.0	5.4	2.9
	100	37.5	4.0	2.8	4.0	2.8	4.3	2.8	4.4	2.8	4.7	3.0	5.0	2.9	5.3	2.9
	104	40.0	3.9	2.7	4.0	2.8	4.3	2.8	4.4	2.8	4.6	2.9	5.0	2.9	5.3	2.9
	110	43.0	3.9	2.7	3.9	2.8	4.2	2.8	4.3	2.8	4.5	2.9	4.9	2.9	5.2	2.9
50 (5.6)	68	20.0	5.3	3.7	5.5	3.8	5.8	3.8	6.0	3.8	6.2	3.9	6.6	3.9	7.1	3.8
	73	22.5	5.3	3.7	5.4	3.7	5.8	3.7	5.9	3.8	6.2	3.9	6.6	3.9	7.0	3.8
	77	25.0	5.2	3.6	5.3	3.7	5.7	3.7	5.9	3.7	6.1	3.9	6.5	3.8	6.9	3.8
	82	27.5	5.2	3.6	5.3	3.7	5.7	3.7	5.8	3.7	6.0	3.8	6.4	3.8	6.7	3.7
	86	30.0	5.1	3.6	5.2	3.6	5.6	3.6	5.8	3.7	6.0	3.8	6.4	3.8	6.8	3.7
	91	32.5	5.0	3.5	5.2	3.6	5.5	3.6	5.7	3.6	5.9	3.8	6.3	3.8	6.7	3.7
	95	35.0	5.0	3.5	5.1	3.6	5.5	3.6	5.6	3.6	5.8	3.7	6.3	3.7	6.7	3.7
	100	37.5	4.9	3.5	5.0	3.5	5.4	3.5	5.5	3.6	5.8	3.7	6.2	3.7	6.6	3.7
	104	40.0	4.8	3.4	5.0	3.5	5.3	3.5	5.4	3.5	5.7	3.7	6.2	3.7	6.6	3.6
	110	43.0	4.8	3.4	4.9	3.5	5.3	3.5	5.4	3.5	5.7	3.7	6.0	3.6	6.5	3.6
63 (7.1)	68	20.0	6.7	4.8	6.9	4.9	7.4	4.9	7.6	4.9	7.9	5.1	8.4	5.0	8.9	5.0
	73	22.5	6.7	4.7	6.9	4.8	7.3	4.8	7.5	4.9	7.8	5.1	8.3	5.0	8.8	4.9
	77	25.0	6.6	4.7	6.8	4.8	7.2	4.8	7.5	4.8	7.7	5.0	8.2	5.0	8.8	4.9
	82	27.5	6.5	4.7	6.7	4.8	7.2	4.8	7.4	4.8	7.7	5.0	8.2	4.9	8.5	4.8
	86	30.0	6.5	4.6	6.6	4.7	7.1	4.7	7.3	4.8	7.6	5.0	8.1	4.9	8.6	4.8
	91	32.5	6.4	4.6	6.5	4.7	7.0	4.7	7.2	4.7	7.5	4.9	8.0	4.9	8.5	4.8
	95	35.0	6.3	4.6	6.4	4.6	6.9	4.6	7.1	4.7	7.4	4.9	8.0	4.9	8.4	4.8
	100	37.5	6.2	4.5	6.4	4.6	6.8	4.6	7.0	4.6	7.3	4.9	7.8	4.8	8.4	4.8
	104	40.0	6.1	4.5	6.3	4.6	6.8	4.6	6.9	4.6	7.2	4.8	7.8	4.8	8.3	4.7
	110	43.0	6.1	4.4	6.2	4.5	6.7	4.5	6.8	4.5	7.2	4.8	7.7	4.7	8.2	4.7

kcal/h = kW x 860, Btu/h = kW x 3,412

2. CAPACITY TABLES

R410A Data G2

2-3a. Cooling capacity in combination with PUHY,PURY-P450,500,550,600,650YGM

PLFY-P-VLMD-E

CA : Capacity(kW) SHC : Sensible Heat Capacity(kW)

Model size (Rated kW)	Outdoor air temp.		Indoor air temp.													
			71°FDB / 59°FWB		73°FDB / 61°FWB		77°FDB / 64°FWB		81°FDB / 66°FWB		82°FDB / 68°FWB		86°FDB / 72°FWB		90°FDB / 75°FWB	
	°FDB	°CDB	21.5°CDB / 15°CWB		23°CDB / 16°CWB		25°CDB / 18°CWB		27°CDB / 19°CWB		28°CDB / 20°CWB		30°CDB / 22°CWB		32°CDB / 24°CWB	
		CA	SHC	CA	SHC	CA	SHC	CA	SHC	CA	SHC	CA	SHC	CA	SHC	
80 (9.0)	68	20.0	8.5	6.0	8.8	6.2	9.4	6.2	9.6	6.2	10.0	6.5	10.6	6.4	11.3	6.3
	73	22.5	8.5	6.0	8.7	6.1	9.3	6.1	9.5	6.2	9.9	6.4	10.6	6.4	11.2	6.3
	77	25.0	8.4	6.0	8.6	6.1	9.2	6.1	9.5	6.1	9.8	6.4	10.4	6.3	11.1	6.2
	82	27.5	8.3	5.9	8.5	6.0	9.1	6.0	9.4	6.1	9.7	6.3	10.4	6.3	10.8	6.1
	86	30.0	8.2	5.9	8.4	6.0	9.0	6.0	9.3	6.0	9.6	6.3	10.3	6.2	10.9	6.1
	91	32.5	8.1	5.8	8.3	5.9	8.8	5.9	9.1	6.0	9.5	6.3	10.2	6.2	10.8	6.1
	95	35.0	8.0	5.8	8.1	5.9	8.8	5.9	9.0	5.9	9.4	6.2	10.1	6.2	10.7	6.1
	100	37.5	7.9	5.7	8.1	5.8	8.6	5.8	8.9	5.9	9.3	6.2	9.9	6.1	10.6	6.0
	104	40.0	7.8	5.7	8.0	5.8	8.6	5.8	8.7	5.8	9.2	6.1	9.9	6.1	10.5	6.0
	110	43.0	7.7	5.6	7.9	5.7	8.5	5.7	8.6	5.8	9.1	6.1	9.7	6.0	10.4	6.0
100 (11.2)	68	20.0	10.6	7.7	10.9	7.9	11.6	7.8	12.0	7.9	12.5	8.2	13.2	8.1	14.1	8.0
	73	22.5	10.5	7.6	10.8	7.8	11.5	7.8	11.9	7.8	12.3	8.2	13.2	8.1	13.9	8.0
	77	25.0	10.4	7.6	10.7	7.8	11.4	7.7	11.8	7.8	12.2	8.1	13.0	8.0	13.8	7.9
	82	27.5	10.3	7.5	10.5	7.7	11.3	7.7	11.6	7.7	12.1	8.1	12.9	8.0	13.4	7.8
	86	30.0	10.2	7.5	10.4	7.6	11.2	7.6	11.5	7.7	12.0	8.0	12.8	7.9	13.6	7.8
	91	32.5	10.1	7.4	10.3	7.6	11.0	7.5	11.3	7.6	11.9	8.0	12.7	7.9	13.4	7.8
	95	35.0	10.0	7.3	10.1	7.5	10.9	7.5	11.2	7.6	11.6	7.9	12.5	7.9	13.3	7.7
	100	37.5	9.9	7.3	10.0	7.4	10.8	7.4	11.0	7.5	11.6	7.9	12.4	7.8	13.2	7.7
	104	40.0	9.7	7.2	9.9	7.4	10.7	7.4	10.9	7.4	11.4	7.8	12.3	7.8	13.1	7.7
	110	43.0	9.6	7.2	9.8	7.3	10.5	7.3	10.8	7.4	11.3	7.7	12.1	7.7	13.0	7.6
125 (14.0)	68	20.0	13.2	9.7	13.7	10.0	14.6	9.9	15.0	10.1	15.6	10.5	16.5	10.3	17.6	10.2
	73	22.5	13.2	9.7	13.5	9.9	14.4	9.9	14.8	10.0	15.4	10.4	16.5	10.3	17.4	10.2
	77	25.0	13.0	9.6	13.4	9.9	14.3	9.8	14.7	9.9	15.3	10.4	16.2	10.2	17.3	10.1
	82	27.5	12.9	9.5	13.2	9.8	14.1	9.7	14.6	9.9	15.1	10.3	16.1	10.2	16.8	9.9
	86	30.0	12.7	9.5	13.0	9.7	14.0	9.7	14.4	9.8	15.0	10.2	16.0	10.1	16.9	10.0
	91	32.5	12.6	9.4	12.9	9.6	13.7	9.6	14.1	9.7	14.8	10.2	15.8	10.1	16.8	9.9
	95	35.0	12.5	9.3	12.7	9.5	13.7	9.5	14.0	9.6	14.6	10.1	15.7	10.0	16.7	9.9
	100	37.5	12.3	9.3	12.6	9.5	13.4	9.4	13.8	9.5	14.5	10.0	15.5	9.9	16.5	9.8
	104	40.0	12.1	9.2	12.4	9.4	13.4	9.4	13.6	9.5	14.3	9.9	15.4	9.9	16.4	9.8
	110	43.0	12.0	9.1	12.3	9.3	13.2	9.3	13.4	9.4	14.1	9.9	15.1	9.8	16.2	9.7

kcal/h = kW x 860, Btu/h = kW x 3,412

2. CAPACITY TABLES

R410A Data G2

2-3b. Heating capacity in combination with PUHY,PURY-P450,500,550,600,650YGM

PLFY-P-VLMD-E

SHC : Sensible Heat Capacity(kW)

Model size (Rated kW)	Outdoor air temp.		Indoor air temp.			
			59 °FDB	68 °FDB	77 °FDB	81 °FDB
			15.0°CDB	20.0°CDB	25.0°CDB	27.0°CDB
	°FWB	°CWB	SHC	SHC	SHC	SHC
20 (2.2)	-4	-20.0	1.3	1.3	1.3	1.3
	5	-15.0	1.6	1.5	1.5	1.5
	14	-10.0	1.8	1.8	1.7	1.7
	23	-5.0	2.1	2.0	1.9	1.8
	32	0.0	2.3	2.3	2.0	1.8
	37	2.5	2.4	2.4	2.0	1.8
	43	6.0	2.6	2.5	2.0	1.8
	46	7.5	2.7	2.5	2.0	1.8
	50	10.0	2.8	2.5	2.0	1.8
	55	12.5	2.9	2.5	2.0	1.8
60	15.5	2.9	2.5	2.0	1.8	
25 (2.8)	-4	-20.0	1.7	1.6	1.6	1.6
	5	-15.0	2.0	1.9	1.9	1.9
	14	-10.0	2.3	2.2	2.2	2.1
	23	-5.0	2.6	2.6	2.5	2.3
	32	0.0	2.9	2.9	2.5	2.3
	37	2.5	3.1	3.0	2.5	2.3
	43	6.0	3.3	3.2	2.5	2.3
	46	7.5	3.4	3.2	2.5	2.3
	50	10.0	3.6	3.2	2.5	2.3
	55	12.5	3.7	3.2	2.5	2.3
60	15.5	3.7	3.2	2.5	2.3	
32 (3.6)	-4	-20.0	2.1	2.0	2.0	2.0
	5	-15.0	2.5	2.4	2.4	2.3
	14	-10.0	2.9	2.8	2.7	2.6
	23	-5.0	3.3	3.2	3.1	2.8
	32	0.0	3.7	3.6	3.2	2.8
	37	2.5	3.8	3.8	3.2	2.8
	43	6.0	4.1	4.0	3.2	2.8
	46	7.5	4.2	4.0	3.2	2.8
	50	10.0	4.4	4.0	3.2	2.8
	55	12.5	4.6	4.0	3.2	2.8
60	15.5	4.6	4.0	3.2	2.8	
40 (4.5)	-4	-20.0	2.7	2.6	2.6	2.5
	5	-15.0	3.1	3.0	3.0	2.9
	14	-10.0	3.6	3.5	3.4	3.3
	23	-5.0	4.1	4.0	3.9	3.5
	32	0.0	4.6	4.5	4.0	3.5
	37	2.5	4.8	4.8	4.0	3.5
	43	6.0	5.2	5.0	4.0	3.5
	46	7.5	5.3	5.0	4.0	3.5
	50	10.0	5.6	5.0	4.0	3.5
	55	12.5	5.8	5.0	4.0	3.5
60	15.5	5.8	5.0	4.0	3.5	
50 (5.6)	-4	-20.0	3.3	3.2	3.2	3.2
	5	-15.0	3.9	3.8	3.8	3.7
	14	-10.0	4.5	4.4	4.3	4.2
	23	-5.0	5.2	5.0	4.9	4.4
	32	0.0	5.8	5.7	5.0	4.4
	37	2.5	6.0	6.0	5.0	4.4
	43	6.0	6.5	6.3	5.0	4.4
	46	7.5	6.7	6.3	5.0	4.4
	50	10.0	7.0	6.3	5.0	4.4
	55	12.5	7.3	6.3	5.0	4.4
60	15.5	7.3	6.3	5.0	4.4	
63 (7.1)	-4	-20.0	4.2	4.1	4.1	4.0
	5	-15.0	5.0	4.8	4.8	4.6
	14	-10.0	5.8	5.6	5.4	5.3
	23	-5.0	6.6	6.4	6.2	5.6
	32	0.0	7.4	7.2	6.4	5.6
	37	2.5	7.7	7.6	6.4	5.6
	43	6.0	8.2	8.0	6.4	5.6
	46	7.5	8.5	8.0	6.4	5.6
	50	10.0	8.9	8.0	6.4	5.6
	55	12.5	9.3	8.0	6.4	5.6
60	15.5	9.3	8.0	6.4	5.6	

Model size (Rated kW)	Outdoor air temp.		Indoor air temp.			
			59 °FDB	68 °FDB	77 °FDB	81 °FDB
			15.0°CDB	20.0°CDB	25.0°CDB	27.0°CDB
	°FWB	°CWB	SHC	SHC	SHC	SHC
80 (9.0)	-4	-20.0	5.3	5.1	5.1	5.0
	5	-15.0	6.3	6.1	6.0	5.8
	14	-10.0	7.2	7.0	6.8	6.6
	23	-5.0	8.2	8.0	7.7	7.1
	32	0.0	9.2	9.0	8.0	7.1
	37	2.5	9.6	9.5	8.0	7.1
	43	6.0	10.3	10.0	8.0	7.1
	46	7.5	10.6	10.0	8.0	7.1
	50	10.0	11.1	10.0	8.0	7.1
	55	12.5	11.6	10.0	8.0	7.1
60	15.5	11.6	10.0	8.0	7.1	
100 (11.2)	-4	-20.0	6.6	6.4	6.4	6.3
	5	-15.0	7.8	7.6	7.5	7.3
	14	-10.0	9.0	8.8	8.5	8.3
	23	-5.0	10.3	10.0	9.6	8.8
	32	0.0	11.5	11.3	9.9	8.8
	37	2.5	12.0	11.9	9.9	8.8
	43	6.0	12.9	12.5	9.9	8.8
	46	7.5	13.3	12.5	9.9	8.8
	50	10.0	13.9	12.5	9.9	8.8
	55	12.5	14.5	12.5	9.9	8.8
60	15.5	14.5	12.5	9.9	8.8	
125 (14.0)	-4	-20.0	8.5	8.2	8.2	8.0
	5	-15.0	10.0	9.7	9.6	9.3
	14	-10.0	11.5	11.2	10.9	10.6
	23	-5.0	13.1	12.8	12.3	11.3
	32	0.0	14.7	14.4	12.7	11.3
	37	2.5	15.4	15.2	12.7	11.3
	43	6.0	16.5	16.0	12.7	11.3
	46	7.5	17.0	16.0	12.7	11.3
	50	10.0	17.8	16.0	12.7	11.3
	55	12.5	18.6	16.0	12.7	11.3
60	15.5	18.6	16.0	12.7	11.3	

kcal/h = kW x 860, Btu/h = kW x 3,412

2. CAPACITY TABLES

R410A Data G2

2-4a. Cooling capacity in combination with PQHY,PQRY-P200,250YGM, PQHY,PQRY-P400,500YSGM

PLFY-P-VLMD-E

CA : Capacity(kW) SHC : Sensible Heat Capacity(kW)

Model size (Rated kW)	Water temp.		Indoor air temp.													
			71°FDB / 59°FWB 21.5°CDB / 15°CWB		73°FDB / 61°FWB 23°CDB / 16°CWB		77°FDB / 64°FWB 25°CDB / 18°CWB		81°FDB / 66°FWB 27°CDB / 19°CWB		82°FDB / 68°FWB 28°CDB / 20°CWB		86°FDB / 72°FWB 30°CDB / 22°CWB		90°FDB / 75°FWB 32°CDB / 24°CWB	
	°F	°C	CA	SHC	CA	SHC	CA	SHC	CA	SHC	CA	SHC	CA	SHC	CA	SHC
20 (2.2)	50	10.0	2.2	1.8	2.3	1.8	2.4	1.8	2.5	1.9	2.6	1.9	2.7	1.9	2.9	1.9
	68	20.0	2.1	1.7	2.1	1.8	2.3	1.8	2.4	1.8	2.4	1.9	2.6	1.9	2.7	1.8
	86	30.0	1.9	1.7	2.0	1.7	2.1	1.7	2.2	1.7	2.3	1.8	2.4	1.8	2.5	1.8
	104	40.0	1.7	1.6	1.8	1.6	1.9	1.6	2.0	1.7	2.1	1.7	2.2	1.7	2.3	1.7
	113	45.0	1.6	1.5	1.7	1.6	1.8	1.6	1.9	1.6	1.9	1.7	2.0	1.7	2.2	1.6
25 (2.8)	50	10.0	2.8	2.1	2.9	2.1	3.1	2.1	3.2	2.1	3.3	2.2	3.5	2.2	3.7	2.2
	68	20.0	2.6	2.0	2.7	2.0	2.9	2.0	3.0	2.1	3.1	2.1	3.3	2.1	3.5	2.1
	86	30.0	2.5	1.9	2.5	2.0	2.7	2.0	2.8	2.0	2.9	2.1	3.1	2.0	3.2	2.0
	104	40.0	2.2	1.8	2.3	1.9	2.5	1.8	2.5	1.9	2.6	2.0	2.8	1.9	2.9	1.9
	113	45.0	2.1	1.7	2.1	1.8	2.3	1.8	2.4	1.8	2.4	1.9	2.6	1.9	2.7	1.8
32 (3.6)	50	10.0	3.6	2.6	3.7	2.7	3.9	2.6	4.1	2.7	4.2	2.8	4.5	2.7	4.7	2.7
	68	20.0	3.4	2.5	3.5	2.6	3.7	2.5	3.9	2.6	4.0	2.7	4.2	2.6	4.5	2.6
	86	30.0	3.2	2.4	3.3	2.4	3.5	2.4	3.6	2.5	3.7	2.6	3.9	2.5	4.2	2.5
	104	40.0	2.9	2.2	3.0	2.3	3.2	2.3	3.3	2.3	3.4	2.4	3.6	2.4	3.8	2.3
	113	45.0	2.7	2.1	2.8	2.2	3.0	2.2	3.0	2.2	3.1	2.3	3.3	2.3	3.5	2.3
40 (4.5)	50	10.0	4.5	3.0	4.6	3.1	4.9	3.1	5.1	3.1	5.2	3.2	5.6	3.2	5.9	3.1
	68	20.0	4.2	2.9	4.4	3.0	4.7	3.0	4.8	3.0	5.0	3.1	5.3	3.1	5.6	3.0
	86	30.0	3.9	2.8	4.1	2.8	4.4	2.8	4.5	2.8	4.6	2.9	4.9	2.9	5.2	2.9
	104	40.0	3.6	2.6	3.7	2.6	3.9	2.6	4.1	2.7	4.2	2.8	4.5	2.7	4.7	2.7
	113	45.0	3.3	2.4	3.5	2.5	3.7	2.5	3.8	2.5	3.9	2.6	4.2	2.6	4.4	2.6
50 (5.6)	50	10.0	5.5	3.8	5.7	3.9	6.1	3.9	6.3	3.9	6.5	4.1	6.9	4.0	7.3	3.9
	68	20.0	5.3	3.7	5.4	3.8	5.8	3.7	6.0	3.8	6.2	3.9	6.6	3.9	6.9	3.8
	86	30.0	4.9	3.5	5.1	3.6	5.4	3.6	5.6	3.6	5.8	3.7	6.1	3.7	6.5	3.6
	104	40.0	4.4	3.2	4.6	3.3	4.9	3.3	5.1	3.4	5.2	3.5	5.5	3.4	5.9	3.4
	113	45.0	4.2	3.1	4.3	3.2	4.6	3.2	4.7	3.2	4.9	3.3	5.2	3.3	5.5	3.2
63 (7.1)	50	10.0	7.0	4.9	7.3	5.1	7.8	5.0	8.0	5.1	8.3	5.3	8.8	5.2	9.3	5.1
	68	20.0	6.7	4.7	6.9	4.9	7.4	4.8	7.6	4.9	7.8	5.1	8.3	5.0	8.8	4.9
	86	30.0	6.2	4.5	6.4	4.6	6.9	4.6	7.1	4.7	7.3	4.8	7.8	4.8	8.2	4.7
	104	40.0	5.6	4.2	5.8	4.3	6.2	4.3	6.4	4.4	6.6	4.5	7.0	4.5	7.4	4.4
	113	45.0	5.3	4.0	5.4	4.2	5.8	4.1	6.0	4.2	6.2	4.4	6.6	4.3	6.9	4.2
80 (9.0)	50	10.0	8.9	6.2	9.2	6.4	9.9	6.4	10.2	6.5	10.5	6.7	11.1	6.6	11.8	6.5
	68	20.0	8.5	6.0	8.8	6.2	9.3	6.1	9.6	6.2	9.9	6.4	10.5	6.3	11.2	6.2
	86	30.0	7.9	5.7	8.2	5.9	8.7	5.8	9.0	5.9	9.3	6.1	9.8	6.1	10.4	6.0
	104	40.0	7.1	5.3	7.4	5.5	7.9	5.5	8.1	5.6	8.4	5.8	8.9	5.7	9.4	5.6
	113	45.0	6.7	5.1	6.9	5.3	7.4	5.2	7.6	5.3	7.9	5.5	8.3	5.5	8.8	5.4
100 (11.2)	50	10.0	11.1	7.9	11.5	8.1	12.3	8.1	12.7	8.2	13.1	8.5	13.8	8.4	14.6	8.2
	68	20.0	10.5	7.6	10.9	7.8	11.6	7.8	12.0	7.9	12.4	8.2	13.1	8.1	13.9	7.9
	86	30.0	9.8	7.3	10.2	7.5	10.9	7.4	11.2	7.6	11.5	7.8	12.2	7.7	12.9	7.6
	104	40.0	8.9	6.8	9.2	7.0	9.8	7.0	10.1	7.1	10.5	7.4	11.1	7.3	11.7	7.2
	113	45.0	8.3	6.5	8.6	6.7	9.2	6.7	9.5	6.8	9.8	7.1	10.4	7.0	11.0	6.9
125 (14.0)	50	10.0	13.9	10.0	14.4	10.4	15.3	10.3	15.8	10.4	16.3	10.8	17.3	10.7	18.3	10.5
	68	20.0	13.1	9.7	13.6	10.0	14.5	9.9	15.0	10.1	15.5	10.4	16.4	10.3	17.3	10.1
	86	30.0	12.3	9.2	12.7	9.5	13.6	9.5	14.0	9.6	14.4	10.0	15.3	9.9	16.2	9.7
	104	40.0	11.1	8.7	11.5	9.0	12.3	8.9	12.7	9.1	13.1	9.4	13.8	9.3	14.6	9.2
	113	45.0	10.4	8.3	10.7	8.6	11.5	8.6	11.8	8.7	12.2	9.1	12.9	9.0	13.7	8.8

kcal/h = kW x 860, Btu/h = kW x 3,412

2. CAPACITY TABLES

R410A Data G2

2-4b. Heating capacity in combination with PQHY,PQRY-P200,250YGM, PQHY,PQRY-P400,500YSGM

PLFY-P-VLMD-E

SHC : Sensible Heat Capacity(kW)

Model size (Rated kW)	Water temp.		Indoor air temp. : °CDB				
			59 °FDB	66 °FDB	68 °FDB	77 °FDB	81 °FDB
	°F	°C	15.0°CDB	19.0°CDB	20.0°CDB	25.0°CDB	27.0°CDB
20 (2.2)	50	10	2.0	2.0	2.0	1.7	1.5
	68	20	2.5	2.5	2.5	2.1	1.9
	86	30	2.5	2.5	2.5	2.1	1.9
	104	40	2.5	2.5	2.5	2.1	1.9
	113	45	2.5	2.5	2.5	2.1	1.9
25 (2.8)	50	10	2.5	2.5	2.5	2.1	2.0
	68	20	3.2	3.2	3.2	2.7	2.5
	86	30	3.2	3.2	3.2	2.7	2.5
	104	40	3.2	3.2	3.2	2.7	2.5
	113	45	3.2	3.2	3.2	2.7	2.5
32 (3.6)	50	10	3.2	3.2	3.2	2.7	2.4
	68	20	4.0	4.0	4.0	3.4	3.1
	86	30	4.0	4.0	4.0	3.4	3.1
	104	40	4.0	4.0	4.0	3.4	3.1
	113	45	4.0	4.0	4.0	3.4	3.1
40 (4.5)	50	10	4.0	4.0	4.0	3.4	3.1
	68	20	5.0	5.0	5.0	4.2	3.9
	86	30	5.0	5.0	5.0	4.2	3.9
	104	40	5.0	5.0	5.0	4.2	3.9
	113	45	5.0	5.0	5.0	4.2	3.9
50 (5.6)	50	10	5.0	5.0	5.0	4.2	3.9
	68	20	6.3	6.3	6.3	5.3	4.9
	86	30	6.3	6.3	6.3	5.3	4.9
	104	40	6.3	6.3	6.3	5.3	4.9
	113	45	6.3	6.3	6.3	5.3	4.9
63 (7.1)	50	10	6.3	6.3	6.3	5.4	4.9
	68	20	8.0	8.0	8.0	6.8	6.2
	86	30	8.0	8.0	8.0	6.8	6.2
	104	40	8.0	8.0	8.0	6.8	6.2
	113	45	8.0	8.0	8.0	6.8	6.2
80 (9.0)	50	10	7.1	7.1	7.1	6.0	5.5
	68	20	9.0	9.0	9.0	7.6	7.0
	86	30	9.0	9.0	9.0	7.6	7.0
	104	40	9.0	9.0	9.0	7.6	7.0
	113	45	9.0	9.0	9.0	7.6	7.0
100 (11.2)	50	10	7.9	7.9	7.9	6.7	6.1
	68	20	10.0	10.0	10.0	8.5	7.7
	86	30	10.0	10.0	10.0	8.5	7.7
	104	40	10.0	10.0	10.0	8.5	7.7
	113	45	10.0	10.0	10.0	8.5	7.7
125 (14.0)	50	10	9.9	9.9	9.9	8.4	7.7
	68	20	12.5	12.5	12.5	10.6	9.7
	86	30	12.5	12.5	12.5	10.6	9.7
	104	40	12.5	12.5	12.5	10.6	9.7
	113	45	12.5	12.5	12.5	10.6	9.7

kcal/h = kW x 860, Btu/h = kW x 3,412

2. CAPACITY TABLES

2-5a. Cooling capacity in combination with PUMY-P100,125,140YHM

PLFY-P-VLMD-E

CA : Capacity(kW) SHC : Sensible Heat Capacity(kW)

Model size (Rated kW)	Outdoor air temp.		Indoor air temp.															
			71°FDB / 59°FWB		73°FDB / 61°FWB		77°FDB / 64°FWB		81°FDB / 66°FWB		82°FDB / 68°FWB		86°FDB / 72°FWB		90°FDB / 75°FWB			
	°FDB	°CDB	21.5°CDB / 15°CWB		23°CDB / 16°CWB		25°CDB / 18°CWB		27°CDB / 19°CWB		28°CDB / 20°CWB		30°CDB / 22°CWB		32°CDB / 24°CWB			
		CA	SHC	CA	SHC	CA	SHC	CA	SHC	CA	SHC	CA	SHC	CA	SHC	CA	SHC	
20 (2.2)	68	20.0	2.1	1.7	2.2	1.8	2.3	1.8	2.4	1.9	2.4	1.9	2.6	1.9	2.7	1.9		
	73	22.5	2.1	1.7	2.1	1.7	2.3	1.7	2.3	1.8	2.4	1.8	2.5	1.8	2.7	1.8		
	77	25.0	2.0	1.7	2.1	1.7	2.2	1.7	2.3	1.8	2.4	1.8	2.5	1.8	2.6	1.8		
	82	27.5	2.0	1.6	2.1	1.7	2.2	1.7	2.3	1.8	2.3	1.8	2.5	1.8	2.6	1.8		
	86	30.0	2.0	1.6	2.0	1.7	2.2	1.7	2.2	1.8	2.3	1.8	2.4	1.8	2.6	1.8		
	91	32.5	1.9	1.6	2.0	1.6	2.1	1.7	2.2	1.8	2.3	1.8	2.4	1.8	2.6	1.8		
	95	35.0	1.9	1.5	2.0	1.6	2.1	1.6	2.2	1.7	2.2	1.7	2.4	1.7	2.5	1.7		
	100	37.5	1.9	1.5	1.9	1.6	2.1	1.6	2.1	1.7	2.2	1.7	2.4	1.7	2.5	1.7		
	104	40.0	1.8	1.5	1.9	1.5	2.0	1.6	2.1	1.7	2.2	1.7	2.3	1.7	2.5	1.7		
110	43.0	1.8	1.4	1.8	1.5	2.0	1.5	2.1	1.6	2.1	1.7	2.3	1.7	2.4	1.7			
25 (2.8)	68	20.0	2.7	1.9	2.7	2.0	2.9	2.0	3.0	2.1	3.1	2.1	3.2	2.1	3.4	2.1		
	73	22.5	2.6	1.9	2.7	2.0	2.9	2.0	3.0	2.1	3.0	2.1	3.2	2.1	3.4	2.1		
	77	25.0	2.6	1.9	2.7	1.9	2.8	2.0	2.9	2.1	3.0	2.1	3.2	2.1	3.3	2.0		
	82	27.5	2.6	1.9	2.6	1.9	2.8	1.9	2.9	2.0	3.0	2.0	3.1	2.0	3.3	2.0		
	86	30.0	2.5	1.8	2.6	1.9	2.8	1.9	2.9	2.0	2.9	2.0	3.1	2.0	3.3	2.0		
	91	32.5	2.5	1.8	2.6	1.9	2.7	1.9	2.8	2.0	2.9	2.0	3.1	2.0	3.2	2.0		
	95	35.0	2.4	1.8	2.5	1.8	2.7	1.8	2.8	2.0	2.9	2.0	3.0	2.0	3.2	2.0		
	100	37.5	2.4	1.7	2.5	1.8	2.6	1.8	2.7	1.9	2.8	1.9	3.0	1.9	3.2	1.9		
	104	40.0	2.3	1.7	2.4	1.8	2.6	1.8	2.7	1.9	2.8	1.9	3.0	1.9	3.2	1.9		
110	43.0	2.3	1.6	2.4	1.7	2.5	1.7	2.6	1.9	2.7	1.9	2.9	1.9	3.1	1.9			
32 (3.6)	68	20.0	3.4	2.4	3.5	2.5	3.7	2.5	3.9	2.6	4.0	2.6	4.2	2.6	4.4	2.6		
	73	22.5	3.4	2.4	3.5	2.5	3.7	2.5	3.8	2.6	3.9	2.6	4.1	2.6	4.3	2.5		
	77	25.0	3.3	2.4	3.4	2.4	3.7	2.4	3.8	2.6	3.9	2.6	4.1	2.6	4.3	2.5		
	82	27.5	3.3	2.3	3.4	2.4	3.6	2.4	3.7	2.5	3.8	2.5	4.0	2.5	4.3	2.5		
	86	30.0	3.2	2.3	3.3	2.4	3.6	2.4	3.7	2.5	3.8	2.5	4.0	2.5	4.2	2.5		
	91	32.5	3.2	2.2	3.3	2.3	3.5	2.3	3.6	2.5	3.7	2.5	4.0	2.5	4.2	2.4		
	95	35.0	3.1	2.2	3.2	2.3	3.5	2.3	3.6	2.4	3.7	2.4	3.9	2.4	4.1	2.4		
	100	37.5	3.0	2.1	3.2	2.2	3.4	2.3	3.5	2.4	3.6	2.4	3.9	2.4	4.1	2.4		
	104	40.0	3.0	2.1	3.1	2.2	3.3	2.2	3.5	2.4	3.6	2.4	3.8	2.4	4.1	2.4		
110	43.0	2.9	2.1	3.0	2.1	3.3	2.2	3.4	2.3	3.5	2.3	3.7	2.3	4.0	2.3			
40 (4.5)	68	20.0	4.3	2.8	4.4	2.9	4.7	2.9	4.8	3.0	5.0	3.0	5.2	3.0	5.5	2.9		
	73	22.5	4.2	2.8	4.4	2.8	4.6	2.8	4.8	3.0	4.9	3.0	5.2	3.0	5.4	2.9		
	77	25.0	4.2	2.7	4.3	2.8	4.6	2.8	4.7	3.0	4.8	3.0	5.1	2.9	5.4	2.9		
	82	27.5	4.1	2.7	4.2	2.8	4.5	2.8	4.6	2.9	4.8	2.9	5.1	2.9	5.3	2.8		
	86	30.0	4.1	2.6	4.2	2.7	4.5	2.7	4.6	2.9	4.7	2.9	5.0	2.9	5.3	2.8		
	91	32.5	4.0	2.6	4.1	2.7	4.4	2.7	4.5	2.9	4.7	2.9	4.9	2.8	5.2	2.8		
	95	35.0	3.9	2.5	4.0	2.6	4.3	2.6	4.5	2.8	4.6	2.8	4.9	2.8	5.2	2.8		
	100	37.5	3.8	2.5	3.9	2.6	4.2	2.6	4.4	2.8	4.5	2.8	4.8	2.8	5.1	2.7		
	104	40.0	3.7	2.4	3.9	2.5	4.2	2.6	4.3	2.7	4.5	2.7	4.8	2.7	5.1	2.7		
110	43.0	3.6	2.4	3.8	2.5	4.1	2.5	4.2	2.7	4.4	2.7	4.7	2.7	5.0	2.7			
50 (5.6)	68	20.0	5.3	3.5	5.5	3.6	5.8	3.6	6.0	3.8	6.2	3.8	6.5	3.8	6.8	3.7		
	73	22.5	5.3	3.5	5.4	3.6	5.8	3.6	5.9	3.8	6.1	3.8	6.4	3.7	6.8	3.7		
	77	25.0	5.2	3.4	5.3	3.5	5.7	3.5	5.9	3.8	6.0	3.7	6.4	3.7	6.7	3.6		
	82	27.5	5.1	3.4	5.3	3.5	5.6	3.5	5.8	3.7	6.0	3.7	6.3	3.7	6.6	3.6		
	86	30.0	5.0	3.3	5.2	3.4	5.5	3.4	5.7	3.7	5.9	3.7	6.2	3.6	6.6	3.6		
	91	32.5	4.9	3.3	5.1	3.4	5.5	3.4	5.6	3.6	5.8	3.6	6.1	3.6	6.5	3.5		
	95	35.0	4.8	3.2	5.0	3.3	5.4	3.3	5.5	3.6	5.7	3.6	6.1	3.5	6.4	3.5		
	100	37.5	4.7	3.1	4.9	3.3	5.3	3.3	5.5	3.5	5.6	3.5	6.0	3.5	6.4	3.5		
	104	40.0	4.6	3.1	4.8	3.2	5.2	3.2	5.4	3.5	5.6	3.5	5.9	3.5	6.3	3.4		
110	43.0	4.5	3.0	4.7	3.1	5.1	3.2	5.3	3.4	5.5	3.4	5.8	3.4	6.2	3.4			
63 (7.1)	68	20.0	6.7	4.6	7.0	4.7	7.4	4.7	7.6	5.0	7.8	5.0	8.2	4.9	8.7	4.8		
	73	22.5	6.7	4.5	6.9	4.7	7.3	4.7	7.5	4.9	7.7	4.9	8.1	4.9	8.6	4.8		
	77	25.0	6.6	4.5	6.8	4.6	7.2	4.6	7.4	4.9	7.6	4.9	8.1	4.8	8.5	4.7		
	82	27.5	6.5	4.4	6.7	4.5	7.1	4.5	7.3	4.8	7.5	4.8	8.0	4.8	8.4	4.7		
	86	30.0	6.4	4.3	6.6	4.5	7.0	4.5	7.2	4.8	7.5	4.8	7.9	4.7	8.3	4.6		
	91	32.5	6.3	4.2	6.5	4.4	6.9	4.4	7.1	4.7	7.4	4.7	7.8	4.7	8.2	4.6		
	95	35.0	6.1	4.2	6.4	4.3	6.8	4.3	7.0	4.6	7.3	4.6	7.7	4.6	8.2	4.5		
	100	37.5	6.0	4.1	6.2	4.2	6.7	4.3	6.9	4.6	7.2	4.6	7.6	4.6	8.1	4.5		
	104	40.0	5.9	4.0	6.1	4.1	6.6	4.2	6.8	4.5	7.1	4.5	7.5	4.5	8.0	4.5		
110	43.0	5.7	3.9	6.0	4.0	6.4	4.1	6.7	4.4	6.9	4.4	7.4	4.4	7.9	4.4			

kcal/h = kW x 860, Btu/h = kW x 3,412

2. CAPACITY TABLES

R410A Data G2

2-5a. Cooling capacity in combination with PUMY-P100,125,140YHM

PLFY-P-VLMD-E

CA : Capacity(kW) SHC : Sensible Heat Capacity(kW)

Model size (Rated kW)	Outdoor air temp.		Indoor air temp.													
			71°FDB / 59°FWB		73°FDB / 61°FWB		77°FDB / 64°FWB		81°FDB / 66°FWB		82°FDB / 68°FWB		86°FDB / 72°FWB		90°FDB / 75°FWB	
			21.5°CDB / 15°CWB		23°CDB / 16°CWB		25°CDB / 18°CWB		27°CDB / 19°CWB		28°CDB / 20°CWB		30°CDB / 22°CWB		32°CDB / 24°CWB	
	°FDB	°CDB	CA	SHC	CA	SHC	CA	SHC	CA	SHC	CA	SHC	CA	SHC	CA	SHC
80 (9.0)	68	20.0	8.6	5.8	8.8	6.0	9.4	6.0	9.6	6.3	9.9	6.3	10.4	6.2	11.0	6.1
	73	22.5	8.4	5.7	8.7	5.9	9.2	5.9	9.5	6.3	9.8	6.2	10.3	6.2	10.9	6.1
	77	25.0	8.3	5.6	8.6	5.8	9.1	5.8	9.4	6.2	9.7	6.2	10.2	6.1	10.8	6.0
	82	27.5	8.2	5.6	8.5	5.8	9.0	5.8	9.3	6.1	9.6	6.1	10.1	6.0	10.6	5.9
	86	30.0	8.1	5.5	8.4	5.7	8.9	5.7	9.2	6.0	9.5	6.0	10.0	6.0	10.5	5.9
	91	32.5	7.9	5.4	8.2	5.6	8.8	5.6	9.0	6.0	9.3	5.9	9.9	5.9	10.4	5.8
	95	35.0	7.8	5.3	8.1	5.5	8.6	5.5	8.9	5.9	9.2	5.9	9.8	5.8	10.3	5.8
	100	37.5	7.6	5.2	7.9	5.4	8.5	5.4	8.8	5.8	9.1	5.8	9.7	5.8	10.2	5.7
	104	40.0	7.4	5.0	7.7	5.2	8.3	5.3	8.6	5.7	8.9	5.7	9.5	5.7	10.1	5.7
110	43.0	7.3	4.9	7.6	5.1	8.2	5.2	8.5	5.6	8.8	5.6	9.4	5.6	10.0	5.6	
100 (11.2)	68	20.0	10.6	7.4	11.0	7.6	11.6	7.6	12.0	8.1	12.3	8.1	13.0	8.0	13.7	7.8
	73	22.5	10.5	7.3	10.8	7.5	11.5	7.5	11.8	8.0	12.2	8.0	12.9	7.9	13.5	7.8
	77	25.0	10.4	7.2	10.7	7.4	11.4	7.4	11.7	7.9	12.0	7.9	12.7	7.8	13.4	7.7
	82	27.5	10.2	7.1	10.6	7.3	11.2	7.3	11.6	7.8	11.9	7.8	12.6	7.7	13.2	7.6
	86	30.0	10.1	7.0	10.4	7.2	11.1	7.3	11.4	7.7	11.8	7.7	12.4	7.6	13.1	7.5
	91	32.5	9.9	6.9	10.2	7.1	10.9	7.1	11.3	7.6	11.6	7.6	12.3	7.5	13.0	7.5
	95	35.0	9.7	6.7	10.0	7.0	10.7	7.0	11.1	7.5	11.4	7.5	12.2	7.5	12.9	7.4
	100	37.5	9.5	6.6	9.8	6.8	10.6	6.9	10.9	7.4	11.3	7.4	12.0	7.4	12.7	7.3
	104	40.0	9.3	6.4	9.6	6.7	10.4	6.8	10.8	7.2	11.1	7.3	11.9	7.3	12.6	7.2
110	43.0	9.0	6.3	9.4	6.5	10.2	6.6	10.5	7.1	10.9	7.1	11.6	7.2	12.4	7.1	
125 (14.0)	68	20.0	13.3	9.4	13.7	9.7	14.6	9.7	15.0	10.3	15.4	10.3	16.2	10.2	17.1	10.0
	73	22.5	13.1	9.3	13.5	9.6	14.4	9.6	14.8	10.2	15.2	10.2	16.1	10.1	16.9	9.9
	77	25.0	13.0	9.2	13.4	9.5	14.2	9.5	14.6	10.1	15.1	10.1	15.9	10.0	16.7	9.8
	82	27.5	12.8	9.0	13.2	9.3	14.0	9.4	14.5	9.9	14.9	9.9	15.7	9.9	16.6	9.7
	86	30.0	12.6	8.9	13.0	9.2	13.9	9.3	14.3	9.8	14.7	9.8	15.5	9.8	16.4	9.6
	91	32.5	12.3	8.7	12.8	9.0	13.6	9.1	14.1	9.7	14.5	9.7	15.4	9.6	16.2	9.5
	95	35.0	12.1	8.6	12.5	8.9	13.4	9.0	13.9	9.5	14.3	9.6	15.2	9.5	16.1	9.5
	100	37.5	11.8	8.4	12.3	8.7	13.2	8.8	13.7	9.4	14.1	9.4	15.0	9.4	15.9	9.4
	104	40.0	11.6	8.2	12.0	8.5	13.0	8.7	13.4	9.2	13.9	9.3	14.8	9.3	15.8	9.3
110	43.0	11.3	8.0	11.8	8.3	12.7	8.5	13.2	9.1	13.6	9.1	14.6	9.1	15.5	9.1	

kcal/h = kW x 860, Btu/h = kW x 3,412

2. CAPACITY TABLES

2-5b. Heating capacity in combination with PUMY-P100,125,140YHM

PLFY-P-VLMD-E

SHC : Sensible Heat Capacity(kW)

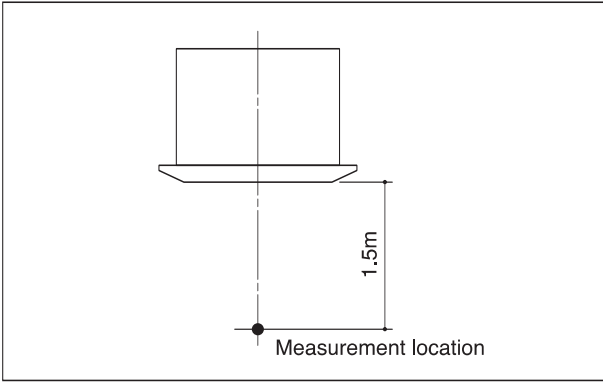
Model size (Rated kW)	Outdoor air temp.		Indoor air temp.			
			59 °FDB	68 °FDB	77 °FDB	81 °FDB
			15.0°CDB	20.0°CDB	25.0°CDB	27.0°CDB
	°FWB	°CWB	SHC	SHC	SHC	SHC
20 (2.2)	-4	-20.0	1.6	1.6	1.5	1.5
	5	-15.0	1.8	1.7	1.6	1.6
	14	-10.0	1.9	1.8	1.8	1.8
	23	-5.0	2.1	2.1	2.0	2.0
	32	0.0	2.4	2.3	2.2	2.2
	37	2.5	2.5	2.4	2.3	2.3
	43	6.0	2.6	2.5	2.5	2.4
	46	7.5	2.7	2.7	2.5	2.4
	50	10.0	2.8	2.8	2.5	2.4
	55	12.5	3.0	2.9	2.5	2.4
60	15.5	3.0	2.9	2.5	2.4	
25 (2.8)	-4	-20.0	2.1	2.0	1.9	1.9
	5	-15.0	2.2	2.1	2.1	2.0
	14	-10.0	2.4	2.3	2.3	2.2
	23	-5.0	2.7	2.7	2.5	2.5
	32	0.0	3.0	2.9	2.8	2.8
	37	2.5	3.2	3.1	3.0	2.9
	43	6.0	3.3	3.2	3.2	3.1
	46	7.5	3.5	3.4	3.2	3.1
	50	10.0	3.6	3.5	3.2	3.1
	55	12.5	3.8	3.7	3.2	3.1
60	15.5	3.9	3.7	3.2	3.1	
32 (3.6)	-4	-20.0	2.6	2.5	2.4	2.4
	5	-15.0	2.8	2.7	2.6	2.6
	14	-10.0	3.0	2.9	2.8	2.8
	23	-5.0	3.4	3.3	3.2	3.1
	32	0.0	3.8	3.7	3.5	3.5
	37	2.5	4.0	3.8	3.7	3.7
	43	6.0	4.1	4.0	4.0	3.9
	46	7.5	4.3	4.2	4.0	3.9
	50	10.0	4.5	4.4	4.0	3.9
	55	12.5	4.7	4.6	4.0	3.9
60	15.5	4.8	4.6	4.0	3.9	
40 (4.5)	-4	-20.0	3.3	3.2	3.0	3.0
	5	-15.0	3.5	3.4	3.3	3.2
	14	-10.0	3.8	3.7	3.6	3.5
	23	-5.0	4.3	4.2	4.0	3.9
	32	0.0	4.7	4.6	4.4	4.4
	37	2.5	5.0	4.8	4.7	4.6
	43	6.0	5.1	5.0	5.0	4.9
	46	7.5	5.4	5.3	5.0	4.9
	50	10.0	5.7	5.5	5.0	4.9
	55	12.5	5.9	5.8	5.0	4.9
60	15.5	6.1	5.8	5.0	4.9	
50 (5.6)	-4	-20.0	4.1	4.0	3.8	3.7
	5	-15.0	4.4	4.2	4.1	4.0
	14	-10.0	4.7	4.6	4.5	4.4
	23	-5.0	5.4	5.2	5.0	4.9
	32	0.0	5.9	5.8	5.5	5.5
	37	2.5	6.2	6.0	5.9	5.8
	43	6.0	6.4	6.3	6.2	6.1
	46	7.5	6.8	6.7	6.2	6.1
	50	10.0	7.1	6.9	6.2	6.1
	55	12.5	7.4	7.2	6.2	6.1
60	15.5	7.6	7.2	6.2	6.1	
63 (7.1)	-4	-20.0	5.2	5.0	4.8	4.7
	5	-15.0	5.6	5.4	5.2	5.1
	14	-10.0	6.0	5.8	5.7	5.6
	23	-5.0	6.8	6.6	6.3	6.2
	32	0.0	7.5	7.4	7.0	7.0
	37	2.5	7.9	7.7	7.4	7.4
	43	6.0	8.2	8.0	7.9	7.8
	46	7.5	8.6	8.5	7.9	7.8
	50	10.0	9.0	8.8	7.9	7.8
	55	12.5	9.4	9.2	7.9	7.8
60	15.5	9.7	9.2	7.9	7.8	

Model size (Rated kW)	Outdoor air temp.		Indoor air temp.			
			59 °FDB	68 °FDB	77 °FDB	81 °FDB
			15.0°CDB	20.0°CDB	25.0°CDB	27.0°CDB
	°FWB	°CWB	SHC	SHC	SHC	SHC
80 (9.0)	-4	-20.0	6.5	6.3	6.0	5.9
	5	-15.0	7.0	6.7	6.5	6.4
	14	-10.0	7.5	7.3	7.1	7.0
	23	-5.0	8.5	8.3	7.9	7.8
	32	0.0	9.4	9.2	8.8	8.7
	37	2.5	9.9	9.6	9.3	9.2
	43	6.0	10.2	10.0	9.9	9.7
	46	7.5	10.8	10.6	9.9	9.7
	50	10.0	11.3	11.0	9.9	9.7
	55	12.5	11.8	11.5	9.9	9.7
60	15.5	12.1	11.5	9.9	9.7	
100 (11.2)	-4	-20.0	8.1	7.9	7.5	7.4
	5	-15.0	8.8	8.4	8.1	8.0
	14	-10.0	9.4	9.1	8.9	8.8
	23	-5.0	10.6	10.4	9.9	9.8
	32	0.0	11.8	11.5	11.0	10.9
	37	2.5	12.4	12.0	11.6	11.5
	43	6.0	12.8	12.5	12.4	12.1
	46	7.5	13.5	13.3	12.4	12.1
	50	10.0	14.1	13.8	12.4	12.1
	55	12.5	14.8	14.4	12.4	12.1
60	15.5	15.1	14.4	12.4	12.1	
125 (14.0)	-4	-20.0	10.4	10.1	9.6	9.4
	5	-15.0	11.2	10.7	10.4	10.2
	14	-10.0	12.0	11.7	11.4	11.2
	23	-5.0	13.6	13.3	12.6	12.5
	32	0.0	15.0	14.7	14.1	13.9
	37	2.5	15.8	15.4	14.9	14.7
	43	6.0	16.3	16.0	15.8	15.5
	46	7.5	17.3	17.0	15.8	15.5
	50	10.0	18.1	17.6	15.8	15.5
	55	12.5	18.9	18.4	15.8	15.5
60	15.5	19.4	18.4	15.8	15.5	

3. SOUND LEVELS

3-1. Sound levels

PLFY-P-VLMD-E



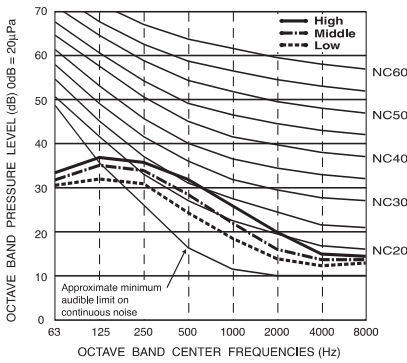
Sound level at anechoic room : Low-Mid-High

	Sound level dB (A)	
	220,240V	230V
PLFY-P20VLMD-E	27-30-33	28-31-34
PLFY-P25VLMD-E		
PLFY-P32VLMD-E		
PLFY-P40VLMD-E	29-33-36	30-34-37
PLFY-P50VLMD-E	31-34-37	32-35-38
PLFY-P63VLMD-E	32-37-39	33-38-40
PLFY-P80VLMD-E	33-36-39	34-37-40
PLFY-P100VLMD-E	36-39-42	37-41-43
PLFY-P125VLMD-E	40-42-44-46	

3-2. NC curves

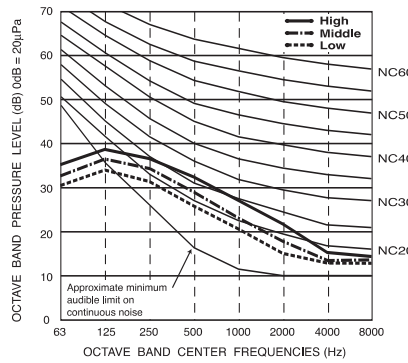
PLFY-P20,25VLMD-E

External static pressure : 0Pa
Power source : 220,240V, 50/60Hz



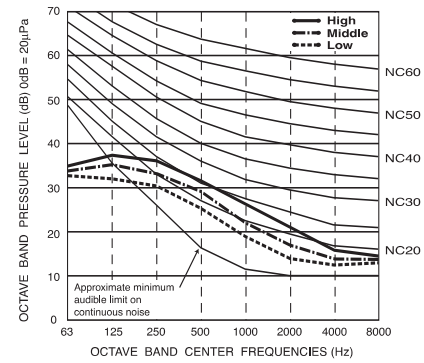
PLFY-P20,25VLMD-E

External static pressure : 0Pa
Power source : 230V, 50/60Hz



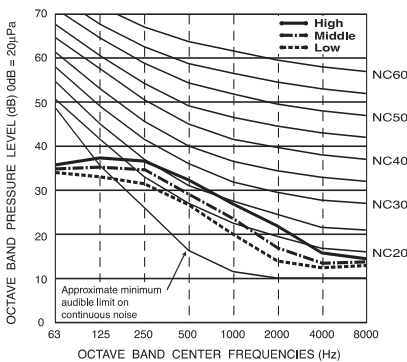
PLFY-P32VLMD-E

External static pressure : 0Pa
Power source : 220,240V, 50/60Hz



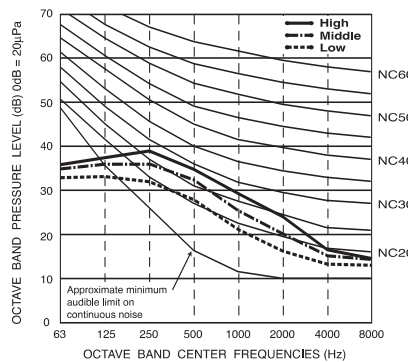
PLFY-P32VLMD-E

External static pressure : 0Pa
Power source : 230V, 50/60Hz



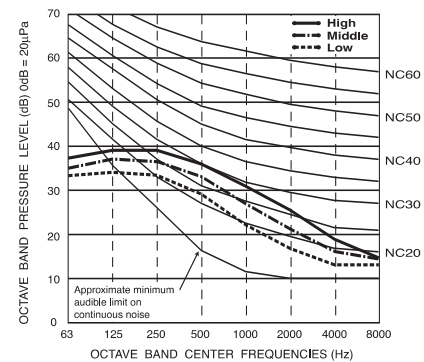
PLFY-P40VLMD-E

External static pressure : 0Pa
Power source : 220,240V, 50/60Hz

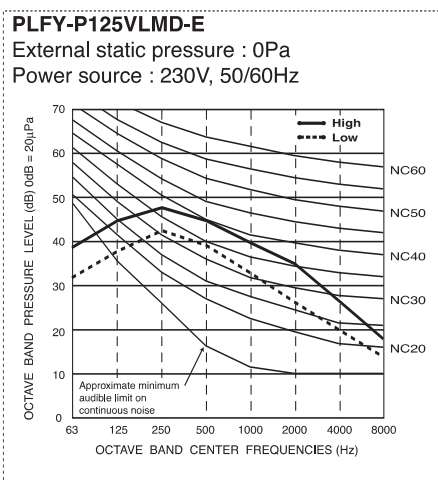
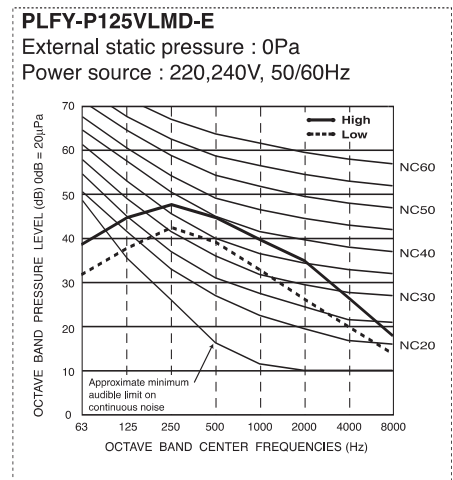
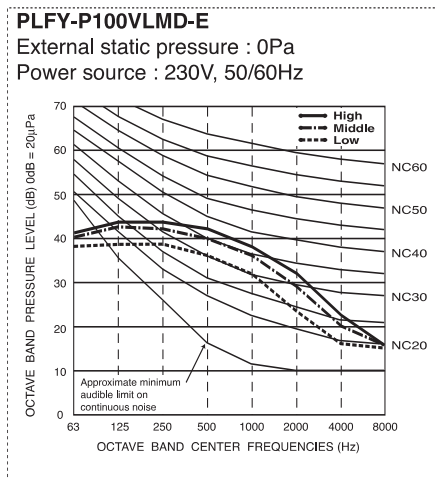
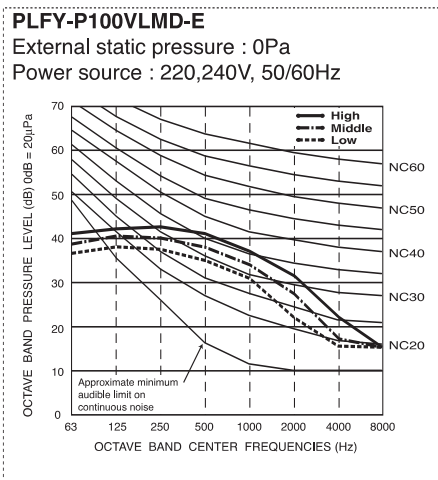
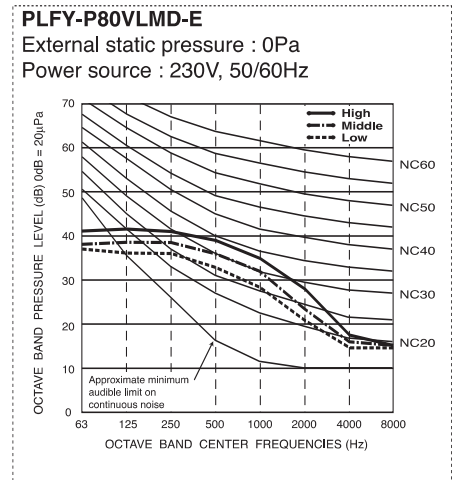
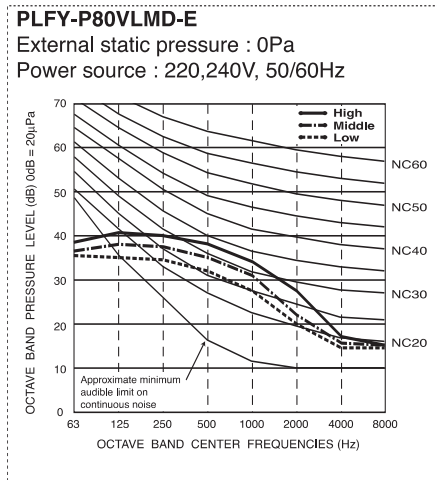
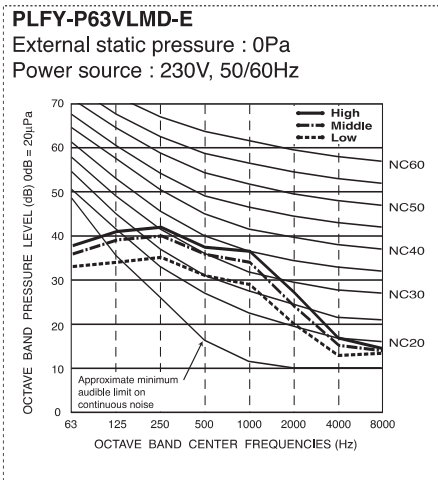
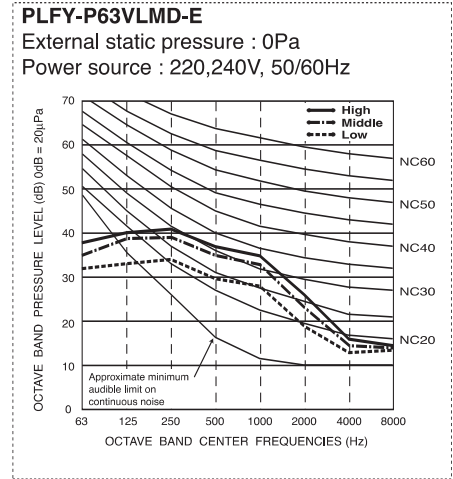
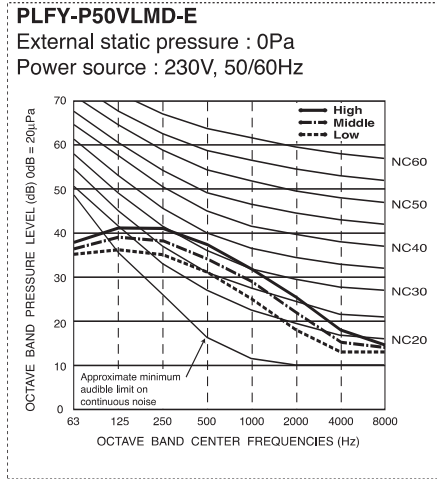
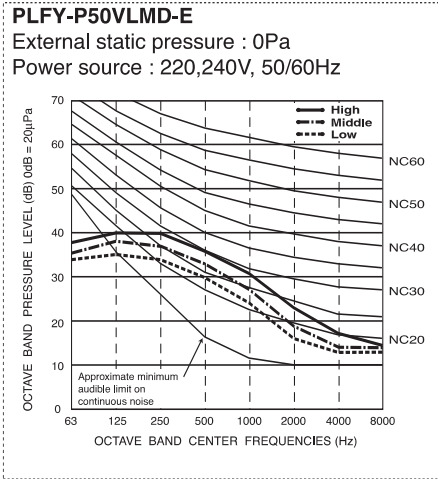


PLFY-P40VLMD-E

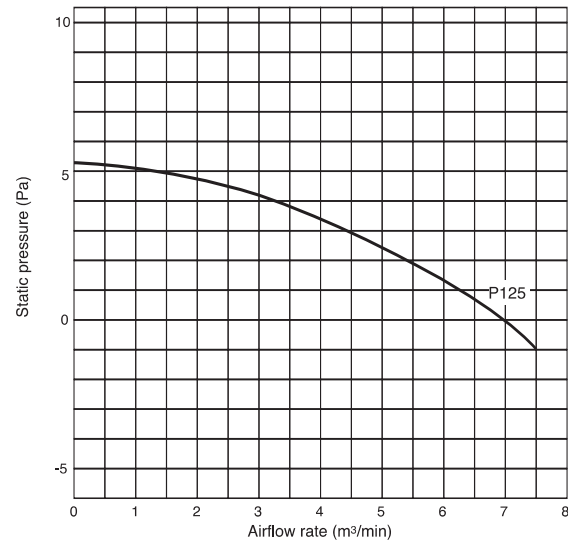
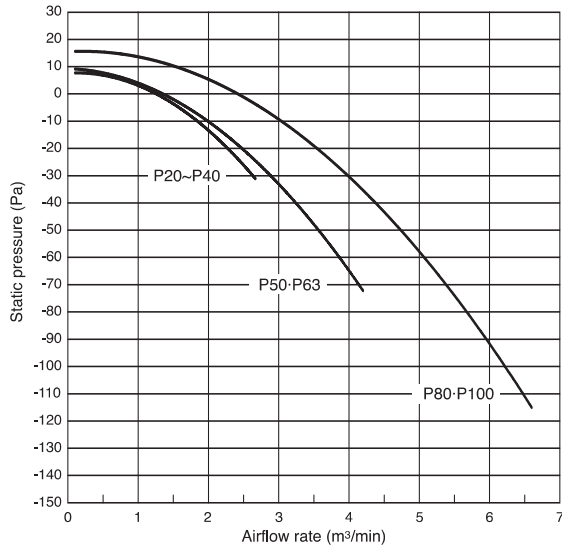
External static pressure : 0Pa
Power source : 230V, 50/60Hz



3-2. NC curves



3-3. OA Intake-static pressure curves



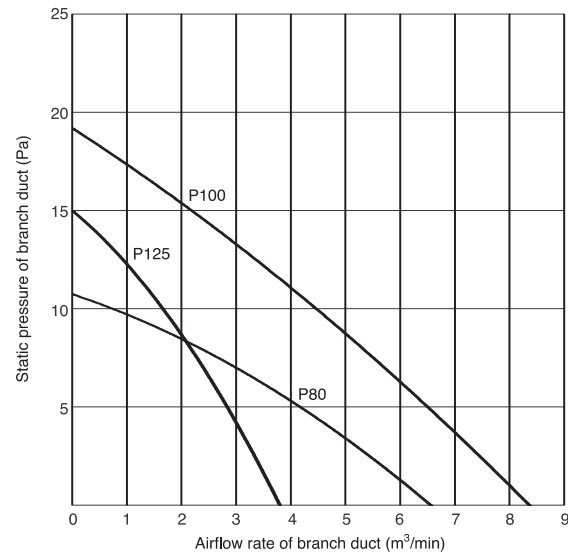
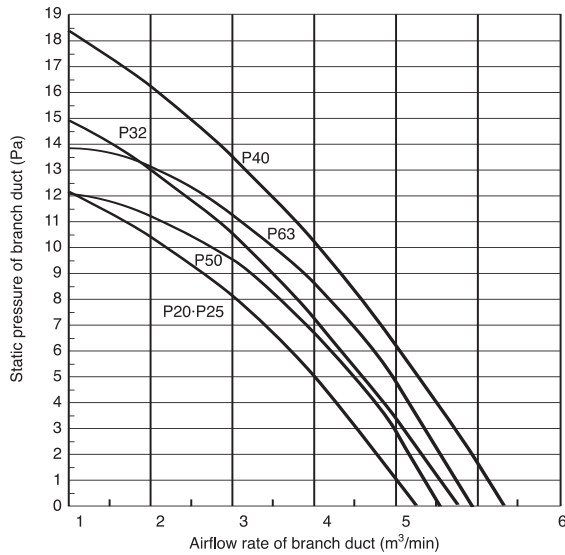
Please confirm that inlet-air temperature (which is mixed with outdoor air) is in the following operating temperature range.

PLFY-P-VLMD-E : Operating temperature range

Mode	Temperature range of inlet air
Cooling	15°C~24°C(Wet bulb)
Dry	
Heating	15°C~27°C(Dry bulb)

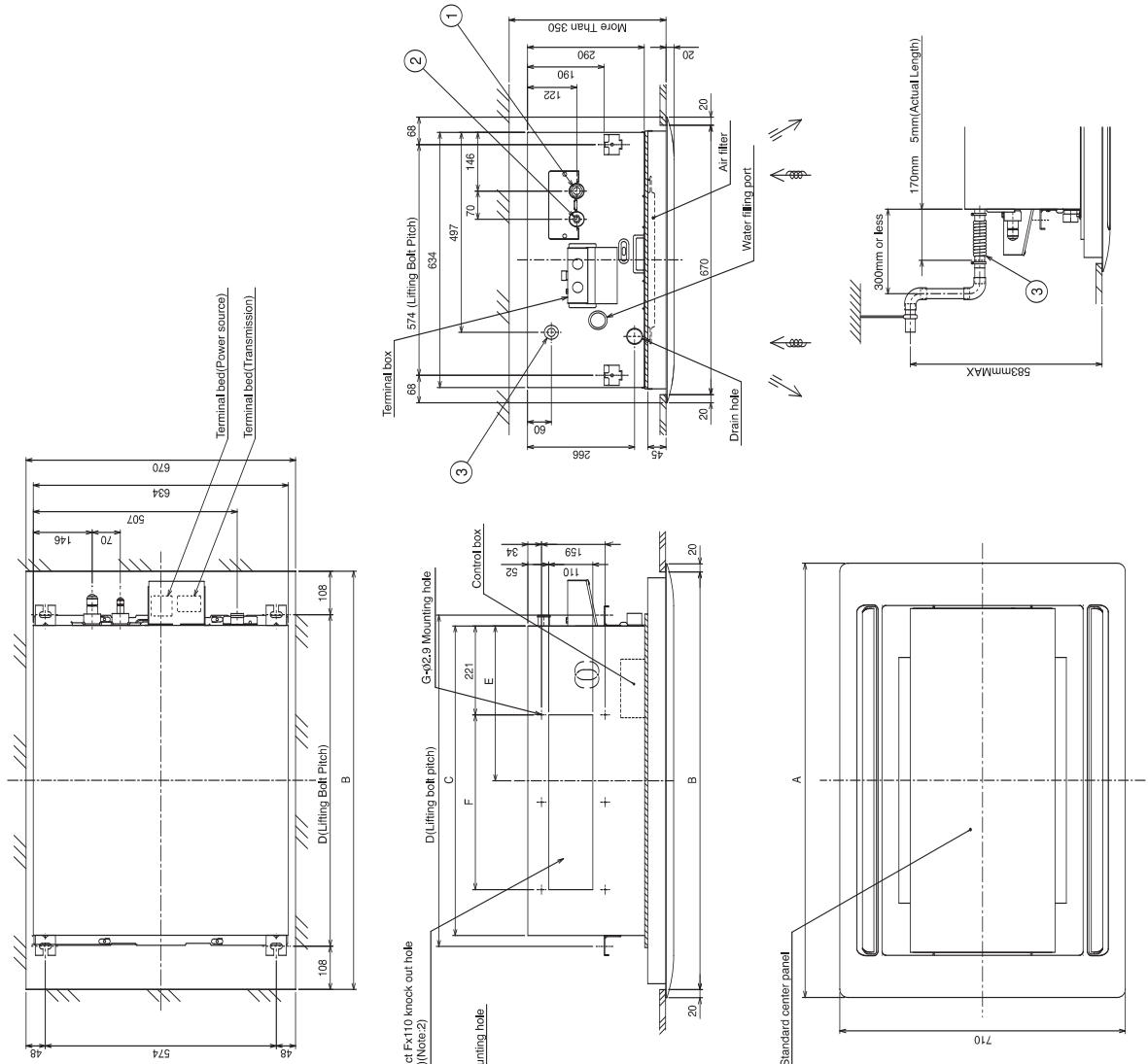
*Relative humidity range is 30~80%.

3-4. Branch duct Intake-static pressure curves



PLFY-P20,25,32,40,50,63,80,100VLM-D-E

Drw. : IU-W275-920
Unit : mm



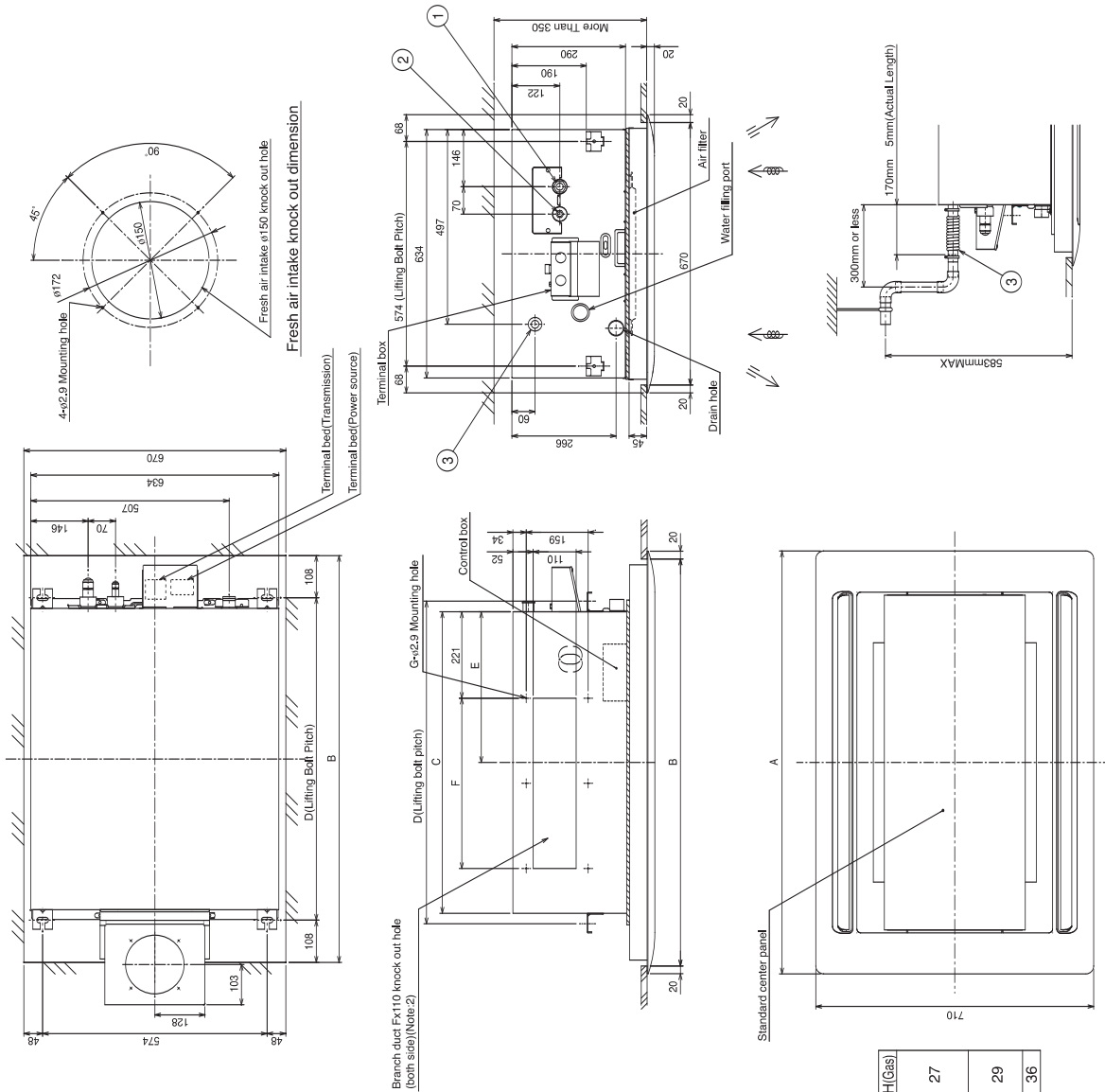
- Note: 1. Use M10 screw for the lifting bolt (field supply).
 2. It is available to connect the branch duct on right and left side both.
 3. On Model 50, 100, you would use flare nut packed with the Indoor Unit, when connecting the Outdoor Unit for R407C, R22.
 4. In order to increase the strength of the flare nut, the size of some of them has been increased.
- | | |
|-------------------|-------------------------------------|
| <flare> | 1 |
| 2 | 2 |
| Model 20:25-32-40 | Gas pipe φ12.7 |
| | Liquid pipe φ6.35 |
| Model 50 | Gas pipe φ12.7<R410A outdoor unit> |
| | φ15.88<R407C, R22 outdoor unit> |
| | φ6.35<R410A outdoor unit> |
| | φ9.52<R407C, R22 outdoor unit> |
| Model 63-80 | Gas pipe φ15.88 |
| | Liquid pipe φ9.52 |
| Model 100 | Gas pipe φ15.88<R410A outdoor unit> |
| | φ19.05<R407C, R22 outdoor unit> |
| | φ9.52 |
| Drain hose | VP-25<flexible joint> (accessory) |
| | 3 |

Model	A	B	C	D	E	F	G	H (Liquid)	H (Gas)
PLFY-P20VLM-D-E	1080	1040	776	824	388	217.5X2	6	17	27
PLFY-P25VLM-D-E						=435			
PLFY-P32VLM-D-E									
PLFY-P40VLM-D-E									
PLFY-P50VLM-D-E	1250	1210	946	994	473			22	29
PLFY-P63VLM-D-E									
PLFY-P80VLM-D-E	1750	1710	1446	1494	723	188.5X4	10	22	36
PLFY-P100VLM-D-E						=754			

PLFY-P20,25,32,40,50,63,80,100VLM-D-E with OA duct flange

Draw. : IU-W275-920-1

Unit : mm



- Note: 1. Use M10 screw for the lifting bolt (field supply).
 2. It is available to connect the branch duct on right and left side both.
 3. On Model 50, 100, you would use flare nut packed with the Indoor Unit, when connecting the Outdoor Unit for R407C, R22.
 4. In order to increase the strength of the flare nut, the size of some of them has been increased.
- | | | | |
|-------------|------------------------------------|---------------------------------|---------|
| Model | Gas pipe | φ12.7 | 1 |
| 20-25-32-40 | Liquid pipe | φ6.35 | 2 |
| Model | Gas pipe | φ12.7<-R410A outdoor unit> | 1 |
| 50 | Liquid pipe | φ6.35<-R410A outdoor unit> | 2 |
| | | φ9.52<-R407C, R22 outdoor unit> | 2 |
| Model | Gas pipe | φ15.88 | 1 |
| 63-80 | Liquid pipe | φ9.52 | 2 |
| Model | Gas pipe | φ15.88<-R410A outdoor unit> | 1 |
| 100 | Liquid pipe | φ9.52<-R407C, R22 outdoor unit> | 2 |
| Drain hose | VP-25<-flexible joint> (accessory) | | 3 |

Model	A	B	C	D	E	F	G	H(Liquid)	I(Gas)
PLFY-P20VLM-D-E	1080	1040	776	824	388	217.5x2	6	17	27
PLFY-P25VLM-D-E						=435			
PLFY-P32VLM-D-E									
PLFY-P40VLM-D-E									
PLFY-P50VLM-D-E	1250	1210	946	994	473			22	29
PLFY-P63VLM-D-E									
PLFY-P80VLM-D-E	1750	1710	1446	1494	723	188.5x4	10	22	36
PLFY-P100VLM-D-E						=754			

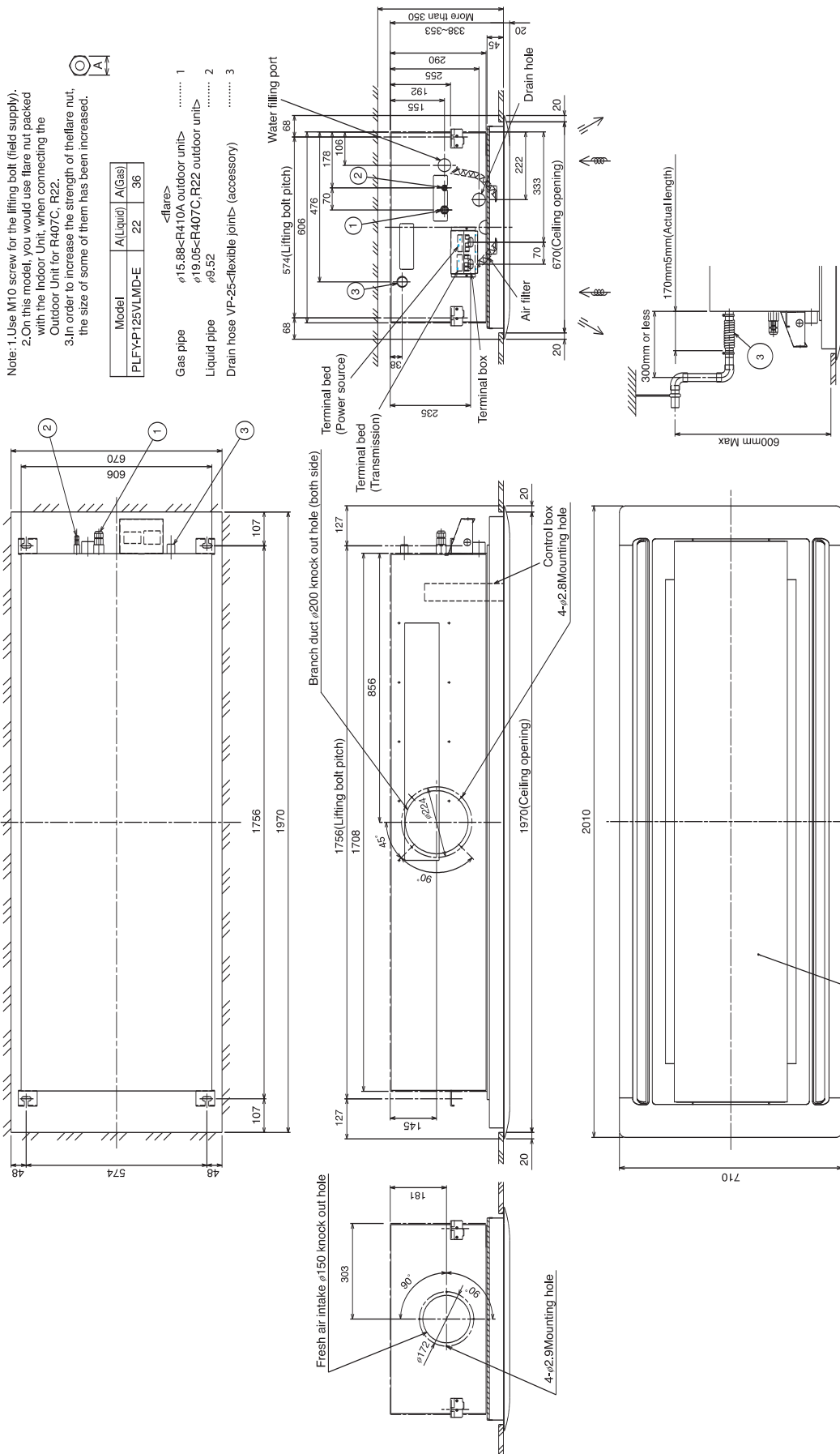
PLFY-P125VLMD-E

Drw. : IU-W275-921
Unit : mm

Note: 1. Use M10 screw for the lifting bolt (field supply).
2. On this model, you would use flare nut packed with the Indoor Unit, when connecting the Outdoor Unit for R407C, R22.
3. In order to increase the strength of the flare nut, the size of some of them has been increased.

Model	A(Liquid)	A(Gas)
PLFY-P125VLMD-E	22	36

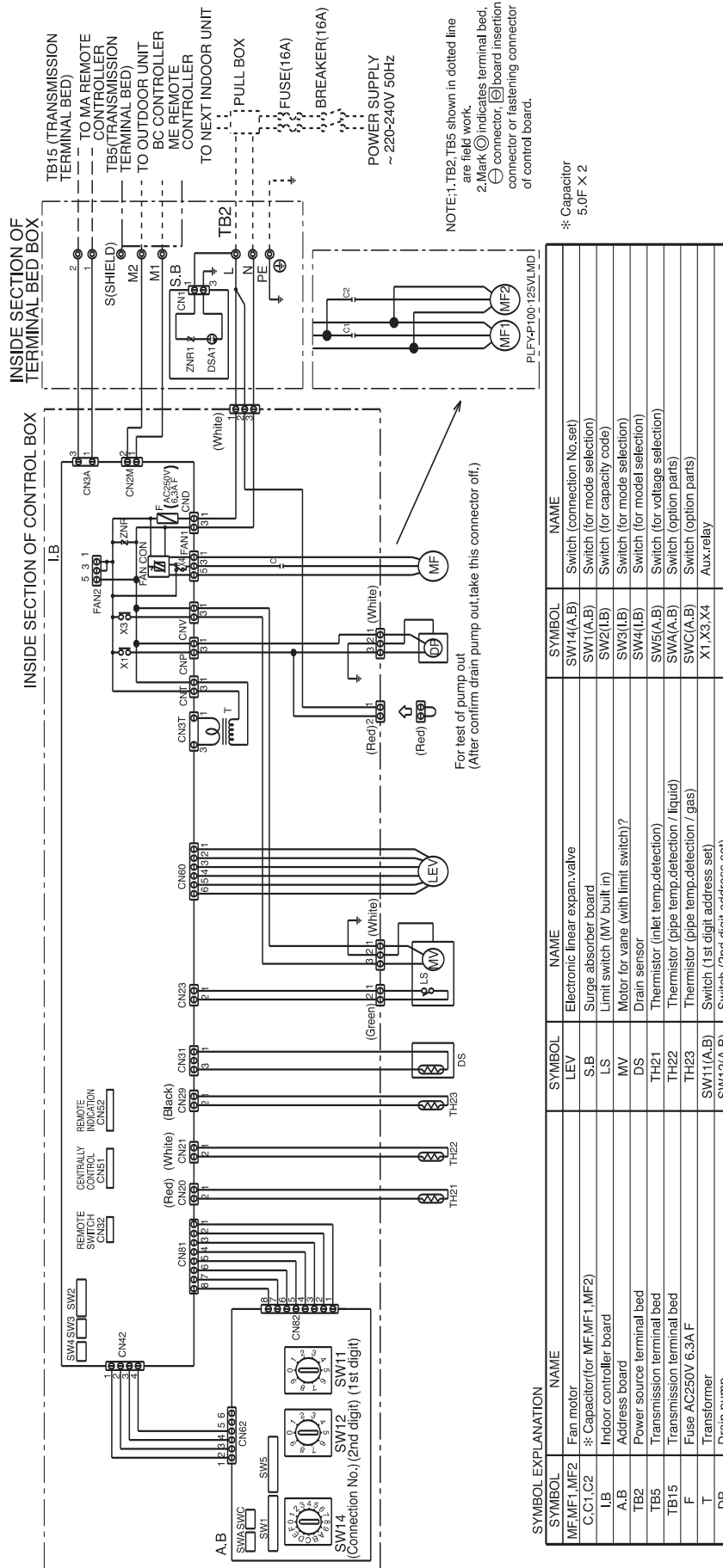
<flare>
Gas pipe ϕ15.88<R410A outdoor unit> 1
Liquid pipe ϕ9.52<R407C, R22 outdoor unit> 2
Drain hose VP-25<flexible joint> (accessory) 3



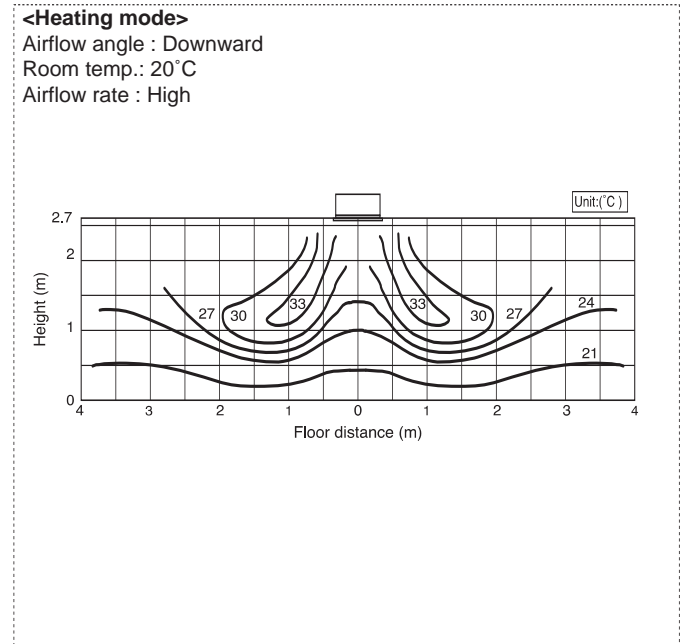
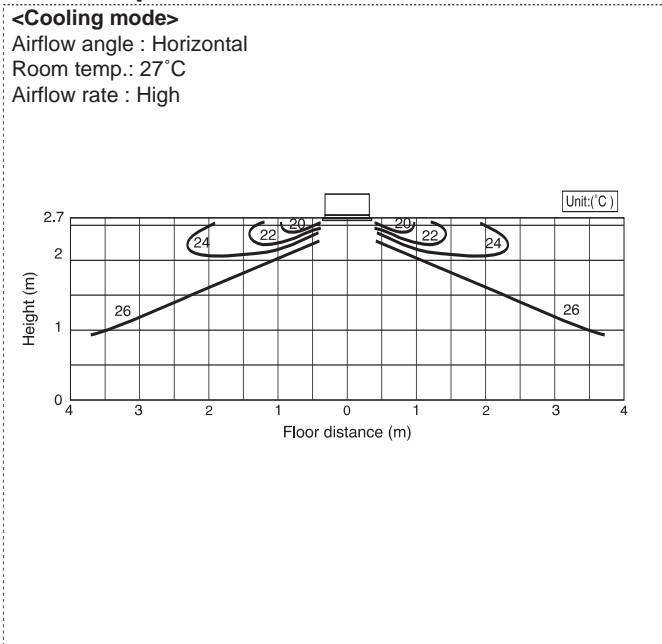
A
B
C
D
E
F
G
H
I
J
V_a
V_b
BC

PLFY-125VLM-D-E

Drw. : IU-W275-927

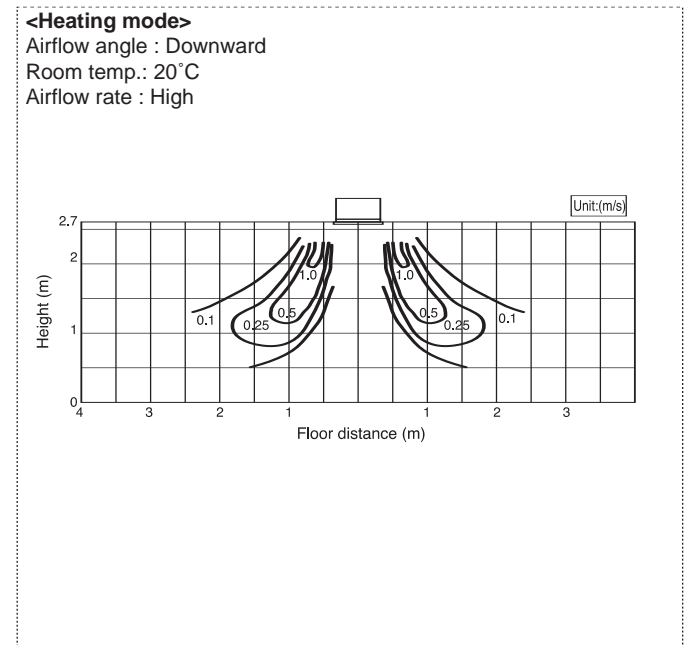
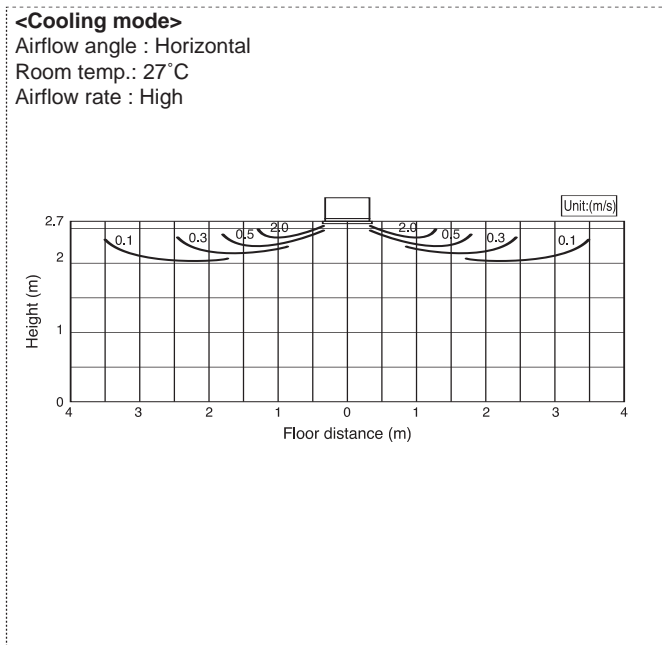


6-1. Temperature distributions



Note : These figures show typical temperature distributions in the conditions above. In the actual installation, they may differ from these figures under the influence of air temperature conditions, ceiling height, cooling/heating load,obstacles,etc.

6-2. Airflow distributions



Note : These figures show typical airflow distributions in the conditions above. In the actual installation, they may differ from these figures under the influence of air temperature conditions, ceiling height, cooling/heating load,obstacles,etc.

- A
- B
- C
- D
- E
- F**
- G
- H
- I
- J
- V_a
- V_b
- BC