



PLFY-P80VLMD-E

Indoor Unit

2-Way Blow Ceiling Cassette



The PLY-P-VLMD-E cassette unit fits into the space in a suspended ceiling to provide heating or cooling. This new unit has been redesigned with lower unit height and lower noise levels.

- **Light unit for ease of installation**
- **Terminal block on outside of unit for easy wiring**
- **Drain lift-pump mechanism as standard**
- **Newly designed decoration panel with airflow switching and swing functions as standard**



Pictures not to scale

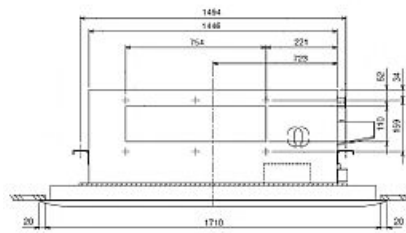
Product Details

| PLFY-P80VLMD-E | |
|---|----------------|
| Capacity (kW): | |
| Heating (Nominal) | 10.0 |
| Cooling (Nominal) | 9.0 |
| R410A Heating (UK) | 9.2 |
| R407c Heating (UK) | 9.2 |
| R410A Cooling (UK) | 8.5 |
| R407c Cooling (UK) | 8.6 |
| R410A High Sensible Cooling (UK) | 6.5 |
| SHF R410A (UK) | 0.71 |
| SHF R407c (UK) | 0.7 |
| SHF High Sensible R410A (UK) | 0.77 |
| Power Input (kW) Heating (Nominal) | 0.14 |
| Power Input (kW) Cooling (Nominal) | 0.147 |
| Airflow(m ³ /min) - Lo-Mi-Hi | 15.5-18.5-22 |
| Noise (dBA) - Lo-Mi-Hi | 33-36-39 |
| Width (grille) - mm | 1446 (1750) |
| Depth (grille) - mm | 634 (710) |
| Height (grille) - mm | 290 (20) |
| Weight (grille) - kg | 44 (12.5) |
| Electrical Supply | 220-240v, 50Hz |
| Phase | Single |
| Mains Cable No. Cores | 3 |
| Running Current (A) - Heating | 0.66 |
| Running Current (A) - Cooling | 0.72 |
| Fuse Rating (BS88) - HRC (A) | 6 |
| Grille Ref | CMP-100VLW-B |

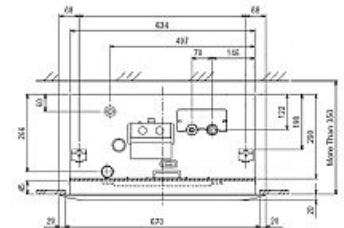
Dimensions

PLFY-P80VLMD-E

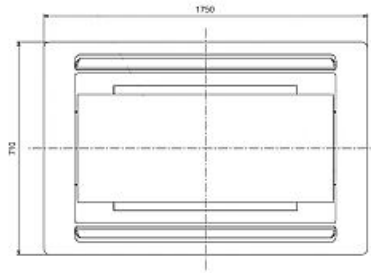
Front View >



Side View >



Lower View >



Telephone: 01707 282880

Email: air.conditioning@meuk.mee.com Website: <http://www.mitsubishielectric.co.uk/aircon>

Mitsubishi Electric reserves the right to make any variation in technical specification to the equipment described, or to withdraw or replace products without prior notification or public announcement.

Tel:
Fax:

