

# PLFY-P-VLMD-E

## 2-Way Blow Ceiling Cassette Indoor Unit

The PLFY-P-VLMD-E cassette unit fits into the space in a suspended ceiling to provide heating or cooling. This new unit has been redesigned with lower unit height and lower noise levels.

- > Light unit for ease of installation
- > Terminal block on outside of unit for easy wiring
- > Drain lift-pump mechanism as standard
- > Newly designed decoration panel with air flow switching and swing functions as standard



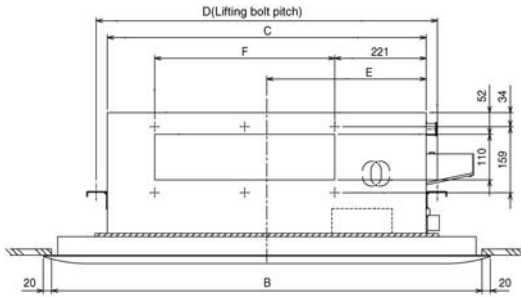
Technical Information >>

### PLFY-P-VLMD-E - INDOOR UNIT

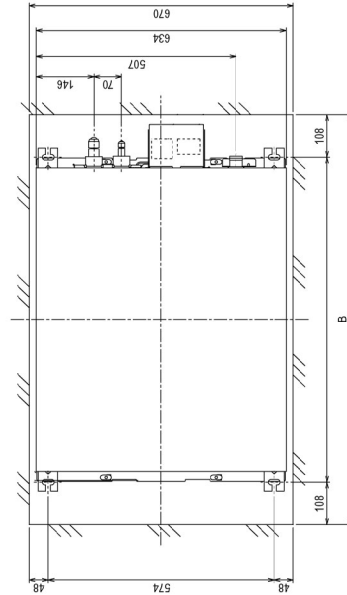
MODEL REFERENCE		PLFY-P20VLMD-E	PLFY-P25VLMD-E	PLFY-P32VLMD-E	PLFY-P40VLMD-E	PLFY-P50VLMD-E	PLFY-P63VLMD-E	PLFY-P80VLMD-E	PLFY-P100VLMD-E	PLFY-P125VLMD-E
CAPACITY (kW)	Heating (nominal)	2.5	3.2	4.0	5.0	6.3	8.0	10.0	12.5	16.0
	Cooling (nominal)	2.2	2.8	3.6	4.5	5.6	7.1	9.0	11.2	14.0
R410A / R407c	Heating (UK)	2.3	3.0	3.7	4.6	5.8	7.4	9.2	11.6	14.8
R410A	Cooling (UK)	2.1	2.6	3.4	4.3	5.3	6.7	8.5	10.6	13.2
R407c	Cooling (UK)	2.1	2.7	3.4	4.3	5.3	6.7	8.6	10.6	13.3
R410A High Sensible	Cooling (UK)	1.6	2.0	2.6	3.3	4.1	5.2	6.5	8.1	10.2
SHF	R410A (UK)	0.81	0.77	0.74	0.67	0.70	0.72	0.71	0.73	0.73
	R407c (UK)	0.76	0.70	0.71	0.72	0.70	0.75	0.70	0.76	0.74
High Sensible	R410A (UK)	0.94	0.85	0.81	0.73	0.73	0.77	0.77	0.79	0.80
POWER INPUT (kW)	Heating (nominal)	0.065	0.065	0.065	0.074	0.075	0.094	0.140	0.150	0.27
	Cooling (nominal)	0.072	0.072	0.072	0.081	0.082	0.101	0.147	0.157	0.28
AIRFLOW (m3/min)	Lo-Mi1-Mi2-Hi	6.5-8.0-9.5	6.5-8.0-9.5	6.5-8.0-9.5	7.0-8.5-10.5	9.0-11.0-12.5	10.0-13.0-15.5	15.5-18.5-22.0	17.5-21.0-25.0	24-27-30-33
NOISE (dBA)	Lo-Mi1-Mi2-Hi	27-30-33	27-30-33	27-30-33	29-33-36	31-34-37	32-37-39	33-36-39	36-39-42	40-42-44-46
WEIGHT (kg)	(Grille)	23(6.5)	23(6.5)	24(6.5)	24(6.5)	27(7.5)	28(7.5)	44(12.5)	47(12.5)	56(13)
DIMENSIONS (mm)	Width (Grille)	776(1080)	776(1080)	776(1080)	776(1080)	946(1250)	946(1250)	1446(1750)	1446(1750)	1708(2010)
	Depth (Grille)	634(710)	634(710)	634(710)	634(710)	634(710)	634(710)	634(710)	634(710)	606(710)
	Height (Grille)	290(20)	290(20)	290(20)	290(20)	290(20)	290(20)	290(20)	290(20)	290(20)
ELECTRICAL SUPPLY		220-240v,	220-240v,	220-240v,	220-240v,	220-240v,	220-240v,	220-240v,	220-240v,	220-240v,
		50Hz	50Hz	50Hz	50Hz	50Hz	50Hz	50Hz	50Hz	50Hz
PHASE		Single	Single	Single	Single	Single	Single	Single	Single	Single
RUNNING CURRENT (A)	Heating	0.30	0.30	0.30	0.34	0.35	0.43	0.66	0.69	1.33
	Cooling	0.36	0.36	0.36	0.40	0.41	0.49	0.72	0.75	1.35
FUSE RATING (BS88) – HRC (A)		6	6	6	6	6	6	6	6	6
MAINS CABLE No. Cores		3	3	3	3	3	3	3	3	3
GRILLE MODEL REFERENCE		CMP-40VLW-B	CMP-40VLW-B	CMP-40VLW-B	CMP-40VLW-B	CMP-63VLW-B	CMP-63VLW-B	CMP-100VLW-B	CMP-100VLW-B	CMP-125VLW-B

## PLFY-P20, 25, 32, 40, 50, 63, 80, 100VLMD-E

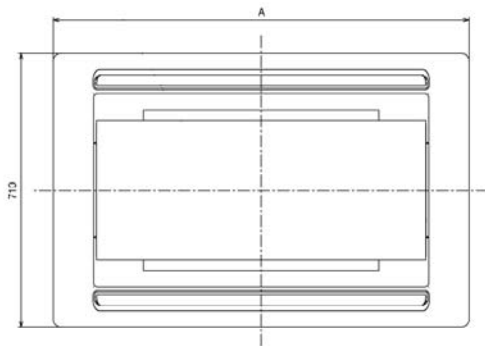
Front View >



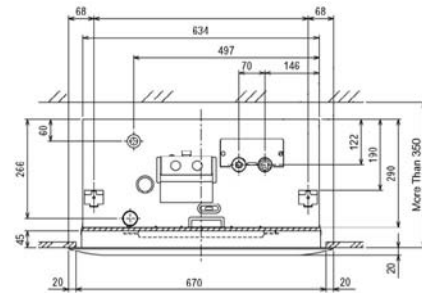
Upper View >



Lower View >



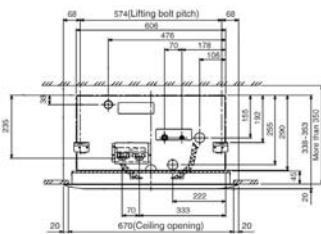
Side View >



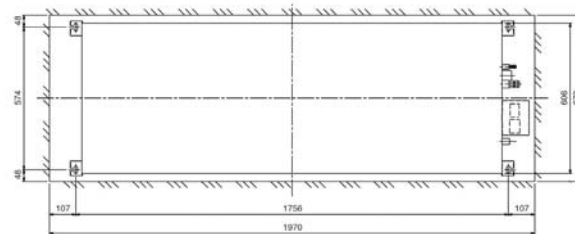
Model	A	B	C	D	E	F
PLFY-P20VLMD-E						
PLFY-P25VLMD-E						
PLFY-P32VLMD-E	CMP-40VLW-B	1080	1040	776	824	388
PLFY-P40VLMD-E						217.5X2 =435
PLFY-P50VLMD-E						
PLFY-P63VLMD-E	CMP-63VLW-B	1250	1210	946	994	473
PLFY-P80VLMD-E						
PLFY-P100VLMD-E	CMP-100VLW-B	1750	1710	1446	1494	723
						188.5X4 =754

## PLFY-PI25VLMD-E

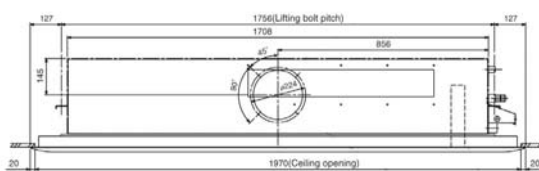
Side View >



Upper View >



Rear View >



Lower View >

