

**CONTENTS**

1. Specifications ..... I -92

2. Capacity Tables ..... I -93

    2.1a. Cooling capacity in combination with PUHY,PUY,PURY-P200,250YGM ..... I -93

    2.1b. Heating capacity in combination with PUHY,PUY,PURY-P200,250YGM ..... I -95

    2.2a. Cooling capacity in combination with PUHY,PUY,PURY-P300,350,400YGM ..... I -96

    2.2b. Heating capacity in combination with PUHY,PUY,PURY-P300,350,400YGM ..... I -98

    2.3a. Cooling capacity in combination with PUHY,PURY-P500,650YGM ..... I -99

    2.3b. Heating capacity in combination with PUHY,PURY-P500,650YGM ..... I -101

3. Sound Levels ..... I -103

    3.1 Noise levels ..... I -103

    3.2 NC curves ..... I -103

    3.3 OA Intake-static pressure curve ..... I -105

    3.4 Branch duct Intake-static pressure curves ..... I -106

4. External Dimensions ..... I -107

5. Electrical Wiring Diagrams ..... I -110

6. Temperature/Airflow distribution ..... I -112

    6.1 Temperature distribution ..... I -112

    6.2 Airflow distribution ..... I -112

7. Options ..... I -112

Model Name	20	25	32	40	50	63	71	80	100	125	140	200	250
PLFY-P-VLMD-E	●	●	●	●	●	●		●	●	●			

# 1. Specifications

			PLFY-P20VLMD-E	PLFY-P25VLMD-E	PLFY-P32VLMD-E	PLFY-P40VLMD-E
Power source			~ 220-240V 50Hz / ~ 220-230V 60Hz			
Cooling capacity	*1	kW	2.2	2.8	3.6	4.5
	*1	BTU/h	7,500	9,550	12,280	15,350
	*2	kW	2.3	2.9	3.7	4.7
	*2	kcal/h	2,000	2,500	3,150	4,000
Heating capacity	*1	kW	2.5	3.2	4.0	5.0
	*1	BTU/h	8,530	10,750	13,640	17,060
	*2	kW	2.6	3.3	4.1	5.2
	*2	kcal/h	2,250	2,800	3,550	4,500
Power consumption	Cooling	kW	0.072 / 0.075	0.072 / 0.075	0.072 / 0.075	0.081 / 0.085
	Heating	kW	0.065 / 0.069	0.065 / 0.069	0.065 / 0.069	0.074 / 0.079
Current	Cooling	A	0.36 / 0.37	0.36 / 0.37	0.36 / 0.37	0.40 / 0.42
	Heating	A	0.30 / 0.32	0.30 / 0.32	0.30 / 0.32	0.34 / 0.37
External finish(Munsel No.)			Unit: Galvanizing Decoration Panel: ABS (0.7Y 8.59/0.97) Service Panel: Galvanizing (0.7Y 8.59/0.97)			
Dimension H x W x D *3		mm	290(20) x 776(1,080) x 634(710)			
Net weight *3		kg	23 <6.5>		24 <6.5>	
Heat exchanger			Cross fin			
Fan	Type	Turbo fanX1				
	Airflow rate (Lo-Mid-Hi)	m³/min	6.5-8.0-9.5			7.0-8.5-10.5
	External static pressure	Pa	0			
Motor	Type	Single phase induction motor				
	Output	kW	0.015			
Air filter			PP honeycomb fabric (long life filter)			
Refrigerant pipe dimension	Gas(Flare)	mm	ø 12.7			
	Liquid(Flare)	mm	ø 6.35			
Drain pipe dimension			Unit drain pipe I.D.32 (1-1/4inch)			
Noise level (Lo-Mid-Hi) *4	220V,240V	dB(A)	27-30-33			29-33-36
	230V	dB(A)	28-31-34			30-34-37

			PLFY-P50VLMD-E	PLFY-P63VLMD-E	PLFY-P80VLMD-E	PLFY-P100VLMD-E	PLFY-P125VLMD-E	
Power source			~ 220-240V 50Hz / ~ 220-230V 60Hz					
Cooling capacity	*1	kW	5.6	7.1	9.0	11.2	14.0	
	*1	BTU/h	19,100	24,220	30,700	38,200	47,750	
	*2	kW	5.8	7.3	9.3	11.6	14.5	
	*2	kcal/h	5,000	6,300	8,000	10,000	12,500	
Heating capacity	*1	kW	6.3	8.0	10.0	12.5	16.0	
	*1	BTU/h	21,500	27,290	34,120	42,650	54,580	
	*2	kW	6.5	8.3	10.5	13.0	16.3	
	*2	kcal/h	5,600	7,100	9,000	11,200	14,000	
Power consumption	Cooling	kW	0.082 / 0.086	0.101 / 0.105	0.147 / 0.156	0.157 / 0.186	0.28 / 0.28	
	Heating	kW	0.075 / 0.080	0.094 / 0.099	0.140 / 0.150	0.150 / 0.180	0.27 / 0.27	
Current	Cooling	A	0.41 / 0.43	0.49 / 0.51	0.72 / 0.74	0.75 / 0.88	1.35 / 1.35	
	Heating	A	0.35 / 0.38	0.43 / 0.46	0.66 / 0.69	0.69 / 0.83	1.33 / 1.33	
External finish(Munsel No.)			Unit: Galvanizing Decoration Panel: ABS (0.7Y 8.59/0.97) Service Panel: Galvanizing (0.7Y 8.59/0.97)					
Dimension H x W x D *3		mm	290(20) x 946(1,250) x 634(710)		290(20) x 1,446(1,750) x 634(710)		290(20) x 1,708(2,010) x 606(710)	
Net weight *3		kg	27 <7.5>	28 <7.5>	44 <12.5>	47 <12.5>	56 <13.0>	
Heat exchanger			Cross fin					
Fan	Type	Turbo fanX1					Turbo fanX2	Sirocco fanX4
	Airflow rate (Lo-Mid-Hi)	m³/min	9.0-11.0-12.5	10.0-13.0-15.5	15.5-18.5-22.0	17.5-21.0-25.0	24.0-27.0-30.0-33.0 (Lo-Mid2-Mid1-Hi)	
	External static pressure	Pa	0					
Motor	Type	Single phase induction motor						
	Output	kW	0.020		0.020 (at 240V)	0.030 (at 240V)	0.078X2(at 240V)	
Air filter			PP honeycomb fabric (long life filter)				Synthetic fiber unwoven cloth filter (long life)	
Refrigerant pipe dimension	Gas(Flare)	mm	ø 12.7 (R410A) ø 15.88 (R22,R407C)		ø 15.88		ø 15.88 (R410A) ø 19.05 (R22,R407C)	
	Liquid(Flare)	mm	ø 6.35 (R410A) ø 9.52 (R22,R407C)		ø 9.52			
Drain pipe dimension			Unit drain pipe I.D.32 (1-1/4inch)					
Noise level (Lo-Mid-Hi) *4	220V,240V	dB(A)	31-34-37	32-37-39	33-36-39	36-39-42	40-42-44-46	
	230V	dB(A)	32-35-38	33-38-40	34-37-40	37-41-43	(Lo-Mid2-Mid1-Hi)	

Note: \*1 Cooling/Heating capacity indicates the maximum value at operation under the following condition.

Cooling : Indoor 27°CDB/19°CWB,Outdoor 35°CDB

Heating : Indoor 20°CDB,Outdoor 7°CDB/6°CWB

\*2 Cooling capacity indicates the maximum value at operation under the following condition.

Cooling : Indoor 27°CDB/19.5°CWB,Outdoor 35°CDB (WR2: water 30°C)

Heating : Indoor 21°CDB,Outdoor 7°CDB/6°CWB (WR2: water 20°C)

\*3 The figure in ( ) indicates panel's

\*4 It is measured in anechoic room.

# 2. Capacity Tables

## 2.1a. Cooling capacity in combination with PUHY,PUY,PURY-P200,250YGM

PLFY-P-VLMD-E CA :Capacity(kW)  
SHC:Sensible Heat Capacity(kW)

Unit size (Rated kW)	Outdoor air temp. °CDB	Indoor air temp.													
		21.5°CDB 15°CWB		23°CDB 16°CWB		25°CDB 18°CWB		27°CDB 19°CWB		28°CDB 20°CWB		30°CDB 22°CWB		32°CDB 24°CWB	
		CA	SHC	CA	SHC	CA	SHC	CA	SHC	CA	SHC	CA	SHC	CA	SHC
20 (2.2)	20.0	2.1	1.7	2.2	1.8	2.3	1.8	2.4	1.8	2.5	1.9	2.6	1.9	2.8	1.8
	22.5	2.1	1.7	2.2	1.8	2.3	1.8	2.4	1.8	2.5	1.9	2.6	1.9	2.8	1.8
	25.0	2.1	1.7	2.2	1.8	2.3	1.8	2.4	1.8	2.4	1.9	2.6	1.9	2.7	1.8
	27.5	2.1	1.7	2.1	1.8	2.3	1.8	2.3	1.8	2.4	1.9	2.5	1.8	2.7	1.8
	30.0	2.0	1.7	2.1	1.8	2.2	1.7	2.3	1.8	2.3	1.8	2.5	1.8	2.6	1.8
	32.5	2.0	1.7	2.1	1.7	2.2	1.7	2.2	1.8	2.3	1.8	2.4	1.8	2.6	1.8
	35.0	2.0	1.7	2.0	1.7	2.1	1.7	2.2	1.7	2.3	1.8	2.4	1.8	2.5	1.8
	37.5	1.9	1.7	2.0	1.7	2.1	1.7	2.1	1.7	2.2	1.8	2.3	1.8	2.5	1.7
	40.0	1.9	1.6	1.9	1.7	2.1	1.7	2.1	1.7	2.2	1.8	2.3	1.7	2.4	1.7
43.0	1.8	1.6	1.9	1.7	2.0	1.7	2.0	1.7	2.1	1.8	2.2	1.7	2.4	1.7	
25 (2.8)	20.0	2.7	2.0	2.8	2.1	2.9	2.1	3.0	2.1	3.1	2.2	3.3	2.1	3.5	2.1
	22.5	2.7	2.0	2.8	2.1	2.9	2.1	3.0	2.1	3.1	2.2	3.3	2.1	3.5	2.1
	25.0	2.7	2.0	2.8	2.1	2.9	2.1	3.0	2.1	3.1	2.1	3.3	2.1	3.5	2.1
	27.5	2.6	2.0	2.7	2.1	2.9	2.0	3.0	2.1	3.1	2.1	3.2	2.1	3.4	2.1
	30.0	2.6	2.0	2.7	2.0	2.8	2.0	2.9	2.0	3.0	2.1	3.1	2.1	3.3	2.0
	32.5	2.5	1.9	2.6	2.0	2.8	2.0	2.8	2.0	2.9	2.1	3.1	2.0	3.3	2.0
	35.0	2.5	1.9	2.6	2.0	2.7	2.0	2.8	2.0	2.9	2.1	3.0	2.0	3.2	2.0
	37.5	2.5	1.9	2.5	2.0	2.7	1.9	2.7	2.0	2.8	2.0	3.0	2.0	3.1	2.0
	40.0	2.4	1.9	2.5	1.9	2.6	1.9	2.7	1.9	2.8	2.0	2.9	2.0	3.1	1.9
43.0	2.4	1.8	2.4	1.9	2.6	1.9	2.6	1.9	2.7	2.0	2.8	1.9	3.0	1.9	
32 (3.6)	20.0	3.4	2.5	3.5	2.6	3.8	2.6	3.9	2.6	4.0	2.7	4.2	2.7	4.6	2.6
	22.5	3.4	2.5	3.5	2.6	3.8	2.6	3.9	2.6	4.0	2.7	4.2	2.7	4.6	2.6
	25.0	3.4	2.5	3.5	2.6	3.8	2.6	3.9	2.6	4.0	2.7	4.2	2.6	4.5	2.6
	27.5	3.4	2.5	3.5	2.6	3.7	2.5	3.8	2.6	3.9	2.7	4.1	2.6	4.4	2.6
	30.0	3.3	2.5	3.4	2.5	3.6	2.5	3.7	2.5	3.8	2.6	4.0	2.6	4.3	2.5
	32.5	3.3	2.4	3.4	2.5	3.6	2.5	3.7	2.5	3.8	2.6	4.0	2.5	4.2	2.5
	35.0	3.2	2.4	3.3	2.5	3.5	2.4	3.6	2.5	3.7	2.6	3.9	2.5	4.1	2.5
	37.5	3.2	2.4	3.2	2.4	3.4	2.4	3.5	2.4	3.6	2.5	3.8	2.5	4.0	2.4
	40.0	3.1	2.3	3.2	2.4	3.4	2.4	3.5	2.4	3.6	2.5	3.7	2.4	4.0	2.4
43.0	3.0	2.3	3.1	2.4	3.3	2.3	3.3	2.4	3.5	2.5	3.6	2.4	3.9	2.4	
40 (4.5)	20.0	4.3	2.9	4.4	3.0	4.7	3.0	4.9	3.0	5.0	3.1	5.3	3.1	5.7	3.1
	22.5	4.3	2.9	4.4	3.0	4.7	3.0	4.9	3.0	5.0	3.1	5.3	3.1	5.7	3.1
	25.0	4.3	2.9	4.4	3.0	4.7	3.0	4.9	3.0	5.0	3.1	5.3	3.1	5.6	3.0
	27.5	4.3	2.9	4.4	3.0	4.6	3.0	4.8	3.0	4.9	3.1	5.2	3.0	5.5	3.0
	30.0	4.2	2.9	4.3	2.9	4.6	2.9	4.7	2.9	4.8	3.0	5.0	3.0	5.4	2.9
	32.5	4.1	2.8	4.2	2.9	4.5	2.9	4.6	2.9	4.7	3.0	5.0	2.9	5.3	2.9
	35.0	4.0	2.8	4.1	2.9	4.4	2.8	4.5	2.8	4.6	2.9	4.9	2.9	5.2	2.8
	37.5	3.9	2.8	4.1	2.8	4.3	2.8	4.4	2.8	4.5	2.9	4.8	2.8	5.0	2.8
	40.0	3.9	2.7	4.0	2.8	4.2	2.8	4.3	2.8	4.5	2.9	4.7	2.8	5.0	2.8
43.0	3.8	2.7	3.9	2.7	4.1	2.7	4.2	2.7	4.3	2.8	4.5	2.8	4.8	2.7	
50 (5.6)	20.0	5.3	3.7	5.5	3.8	5.9	3.8	6.0	3.8	6.2	3.9	6.6	3.9	7.1	3.9
	22.5	5.3	3.7	5.5	3.8	5.9	3.8	6.0	3.8	6.2	3.9	6.6	3.9	7.1	3.9
	25.0	5.3	3.7	5.5	3.8	5.9	3.8	6.0	3.8	6.2	3.9	6.6	3.9	6.9	3.8
	27.5	5.3	3.7	5.5	3.8	5.8	3.7	5.9	3.8	6.1	3.9	6.4	3.8	6.8	3.8
	30.0	5.2	3.6	5.3	3.7	5.7	3.7	5.8	3.7	6.0	3.8	6.3	3.7	6.7	3.7
	32.5	5.1	3.6	5.3	3.7	5.5	3.6	5.7	3.6	5.9	3.8	6.2	3.7	6.6	3.6
	35.0	5.0	3.5	5.2	3.6	5.5	3.6	5.6	3.6	5.7	3.7	6.0	3.6	6.4	3.6
	37.5	4.9	3.5	5.0	3.6	5.3	3.5	5.5	3.5	5.6	3.7	5.9	3.6	6.3	3.5
	40.0	4.8	3.4	5.0	3.5	5.3	3.5	5.4	3.5	5.5	3.6	5.8	3.5	6.2	3.5
43.0	4.7	3.4	4.8	3.5	5.1	3.4	5.2	3.4	5.4	3.5	5.7	3.5	6.0	3.4	
63 (7.1)	20.0	6.7	4.8	7.0	4.9	7.5	4.9	7.7	4.9	7.9	5.1	8.4	5.0	9.0	5.0
	22.5	6.7	4.8	7.0	4.9	7.5	4.9	7.7	4.9	7.9	5.1	8.4	5.0	9.0	5.0
	25.0	6.7	4.8	7.0	4.9	7.5	4.9	7.7	4.9	7.8	5.1	8.3	5.0	8.8	4.9
	27.5	6.7	4.8	6.9	4.9	7.3	4.8	7.5	4.9	7.7	5.0	8.1	4.9	8.7	4.9
	30.0	6.6	4.7	6.8	4.8	7.2	4.8	7.4	4.8	7.6	5.0	8.0	4.9	8.5	4.8
	32.5	6.5	4.6	6.7	4.8	7.0	4.7	7.2	4.7	7.4	4.9	7.8	4.8	8.3	4.7
	35.0	6.4	4.6	6.5	4.7	6.9	4.6	7.1	4.7	7.3	4.8	7.7	4.7	8.1	4.7
	37.5	6.2	4.5	6.4	4.6	6.8	4.6	6.9	4.6	7.1	4.8	7.5	4.7	8.0	4.6
	40.0	6.1	4.4	6.3	4.6	6.7	4.5	6.8	4.5	7.0	4.7	7.3	4.6	7.8	4.6
43.0	6.0	4.4	6.1	4.5	6.5	4.4	6.6	4.5	6.8	4.6	7.2	4.5	7.6	4.5	
80 (9.0)	20.0	8.6	6.1	8.9	6.2	9.5	6.2	9.7	6.2	10.0	6.5	10.6	6.4	11.4	6.3
	22.5	8.6	6.1	8.9	6.2	9.5	6.2	9.7	6.2	10.0	6.5	10.6	6.4	11.4	6.3
	25.0	8.6	6.1	8.9	6.2	9.5	6.2	9.7	6.2	9.9	6.4	10.5	6.3	11.2	6.2
	27.5	8.5	6.0	8.8	6.2	9.3	6.1	9.5	6.2	9.8	6.4	10.3	6.2	11.0	6.2
	30.0	8.4	6.0	8.6	6.1	9.1	6.0	9.4	6.1	9.6	6.3	10.1	6.2	10.8	6.1
	32.5	8.2	5.9	8.5	6.0	8.9	5.9	9.1	6.0	9.4	6.2	9.9	6.1	10.5	6.0
	35.0	8.1	5.8	8.3	5.9	8.8	5.9	9.0	5.9	9.2	6.1	9.7	6.0	10.3	5.9
	37.5	7.9	5.7	8.1	5.8	8.6	5.8	8.8	5.8	9.0	6.0	9.5	5.9	10.1	5.8
	40.0	7.7	5.6	8.0	5.8	8.5	5.7	8.6	5.8	8.9	6.0	9.3	5.8	9.9	5.8
43.0	7.6	5.5	7.8	5.7	8.2	5.6	8.4	5.6	8.6	5.9	9.1	5.8	9.6	5.7	

PLFY-P-VLMD-E

## Cooling capacity in combination with PUHY,PUY,PURY-P200,250YGM

### PLFY-P-VLMD-E

CA :Capacity(kW)  
SHC:Sensible Heat Capacity(kW)

Unit size (Rated kW)	Outdoor air temp.	Indoor air temp.													
		21.5°CDB 15°CWB		23°CDB 16°CWB		25°CDB 18°CWB		27°CDB 19°CWB		28°CDB 20°CWB		30°CDB 22°CWB		32°CDB 24°CWB	
		°CDB	CA	SHC	CA	SHC	CA	SHC	CA	SHC	CA	SHC	CA	SHC	CA
100 (11.2)	20.0	10.6	7.7	11.0	7.9	11.8	7.9	12.1	7.9	12.5	8.2	13.2	8.1	14.2	8.1
	22.5	10.6	7.7	11.0	7.9	11.8	7.9	12.1	7.9	12.5	8.2	13.2	8.1	14.2	8.1
	25.0	10.6	7.7	11.0	7.9	11.8	7.9	12.1	7.9	12.4	8.2	13.1	8.1	13.9	7.9
	27.5	10.6	7.7	10.9	7.9	11.5	7.8	11.9	7.8	12.2	8.1	12.8	8.0	13.7	7.9
	30.0	10.4	7.6	10.7	7.8	11.3	7.7	11.6	7.7	11.9	8.0	12.5	7.9	13.4	7.8
	32.5	10.2	7.5	10.5	7.7	11.1	7.6	11.4	7.6	11.7	7.9	12.3	7.8	13.1	7.7
	35.0	10.0	7.4	10.3	7.6	10.9	7.5	11.2	7.6	11.5	7.8	12.1	7.7	12.8	7.6
	37.5	9.8	7.3	10.1	7.4	10.7	7.4	10.9	7.4	11.3	7.7	11.9	7.6	12.5	7.5
	40.0	9.6	7.2	9.9	7.4	10.5	7.3	10.8	7.4	11.1	7.6	11.6	7.5	12.3	7.4
	43.0	9.4	7.1	9.7	7.3	10.2	7.2	10.4	7.2	10.8	7.5	11.3	7.4	12.0	7.3
125 (14.0)	20.0	13.3	9.8	13.8	10.1	14.7	10.0	15.1	10.1	15.6	10.5	16.5	10.3	17.7	10.3
	22.5	13.3	9.8	13.8	10.1	14.7	10.0	15.1	10.1	15.6	10.5	16.5	10.3	17.7	10.3
	25.0	13.3	9.8	13.8	10.1	14.7	10.0	15.1	10.1	15.5	10.4	16.4	10.3	17.4	10.1
	27.5	13.2	9.7	13.7	10.0	14.4	9.9	14.8	10.0	15.3	10.4	16.0	10.2	17.1	10.0
	30.0	13.0	9.6	13.4	9.9	14.2	9.8	14.6	9.9	14.9	10.2	15.7	10.0	16.7	9.9
	32.5	12.7	9.5	13.2	9.8	13.9	9.6	14.2	9.7	14.6	10.1	15.4	9.9	16.4	9.8
	35.0	12.5	9.4	12.9	9.6	13.7	9.5	14.0	9.6	14.4	10.0	15.1	9.8	16.0	9.6
	37.5	12.3	9.2	12.6	9.5	13.4	9.4	13.7	9.5	14.1	9.9	14.8	9.7	15.7	9.5
	40.0	12.0	9.1	12.4	9.4	13.2	9.3	13.4	9.4	13.9	9.8	14.5	9.6	15.4	9.4
	43.0	11.8	9.0	12.1	9.3	12.8	9.1	13.0	9.2	13.4	9.6	14.1	9.4	15.0	9.3

## 2.1b. Heating capacity in combination with PUHY,PUY,PURY-P200,250YGM

### PLFY-P-VLMD-E

Unit size (Rated kW)	Outdoor air temp. °CWB	Indoor air temp.:°CDB			
		15.0	20.0	25.0	27.0
		SHC	SHC	SHC	SHC
20 (2.2)	-20.0	1.3	1.3	1.3	1.3
	-15.0	1.6	1.5	1.5	1.5
	-10.0	1.8	1.8	1.8	1.7
	-5.0	2.1	2.1	2.0	1.8
	0.0	2.4	2.4	2.0	1.8
	2.5	2.5	2.5	2.0	1.8
	6.0	2.6	2.5	2.0	1.8
	7.5	2.7	2.5	2.0	1.8
	10.0	2.9	2.5	2.0	1.8
	12.5	3.0	2.5	2.0	1.8
	15.5	3.2	2.5	2.0	1.8
25 (2.8)	-20.0	1.6	1.6	1.6	1.6
	-15.0	2.0	2.0	1.9	1.9
	-10.0	2.3	2.3	2.2	2.2
	-5.0	2.7	2.7	2.6	2.2
	0.0	3.0	3.0	2.6	2.2
	2.5	3.2	3.2	2.6	2.2
	6.0	3.3	3.2	2.6	2.2
	7.5	3.4	3.2	2.6	2.2
	10.0	3.6	3.2	2.6	2.2
	12.5	3.9	3.2	2.6	2.2
	15.5	4.1	3.2	2.6	2.2
32 (3.6)	-20.0	2.1	2.0	2.0	2.0
	-15.0	2.5	2.4	2.4	2.4
	-10.0	2.9	2.9	2.8	2.7
	-5.0	3.4	3.3	3.2	2.8
	0.0	3.8	3.8	3.2	2.8
	2.5	4.0	4.0	3.2	2.8
	6.0	4.2	4.0	3.2	2.8
	7.5	4.3	4.0	3.2	2.8
	10.0	4.6	4.0	3.2	2.8
	12.5	4.8	4.0	3.2	2.8
	15.5	5.1	4.0	3.2	2.8
40 (4.5)	-20.0	2.6	2.5	2.5	2.5
	-15.0	3.1	3.1	3.0	3.0
	-10.0	3.7	3.6	3.5	3.4
	-5.0	4.2	4.2	4.0	3.5
	0.0	4.7	4.7	4.0	3.5
	2.5	5.0	5.0	4.0	3.5
	6.0	5.2	5.0	4.0	3.5
	7.5	5.4	5.0	4.0	3.5
	10.0	5.7	5.0	4.0	3.5
	12.5	6.0	5.0	4.0	3.5
	15.5	6.4	5.0	4.0	3.5
50 (5.6)	-20.0	3.2	3.2	3.2	3.2
	-15.0	3.9	3.8	3.8	3.7
	-10.0	4.6	4.5	4.4	4.3
	-5.0	5.3	5.2	5.0	4.4
	0.0	6.0	5.9	5.0	4.4
	2.5	6.3	6.2	5.0	4.4
	6.0	6.6	6.3	5.0	4.4
	7.5	6.8	6.3	5.0	4.4
	10.0	7.2	6.3	5.0	4.4
	12.5	7.6	6.3	5.0	4.4
	15.5	8.1	6.3	5.0	4.4
63 (7.1)	-20.0	4.1	4.0	4.0	4.0
	-15.0	5.0	4.9	4.8	4.7
	-10.0	5.8	5.8	5.6	5.5
	-5.0	6.7	6.6	6.4	5.6
	0.0	7.6	7.5	6.4	5.6
	2.5	8.0	7.9	6.4	5.6
	6.0	8.3	8.0	6.4	5.6
	7.5	8.6	8.0	6.4	5.6
	10.0	9.1	8.0	6.4	5.6
	12.5	9.6	8.0	6.4	5.6
	15.5	10.2	8.0	6.4	5.6
80 (9.0)	-20.0	5.2	5.0	5.0	5.0
	-15.0	6.2	6.1	6.0	5.9
	-10.0	7.3	7.2	7.0	6.9
	-5.0	8.4	8.3	8.0	7.0
	0.0	9.5	9.4	8.0	7.0
	2.5	10.0	9.9	8.0	7.0
	6.0	10.4	10.0	8.0	7.0
	7.5	10.8	10.0	8.0	7.0
	10.0	11.4	10.0	8.0	7.0
	12.5	12.1	10.0	8.0	7.0
	15.5	12.8	10.0	8.0	7.0

SHC:Sensible Heat Capacity(kW)

Unit size (Rated kW)	Outdoor air temp. °CWB	Indoor air temp.:°CDB			
		15.0	20.0	25.0	27.0
		SHC	SHC	SHC	SHC
100 (11.2)	-20.0	6.4	6.3	6.3	6.3
	-15.0	7.8	7.6	7.5	7.4
	-10.0	9.1	9.0	8.8	8.6
	-5.0	10.5	10.4	10.0	8.8
	0.0	11.8	11.8	10.0	8.8
	2.5	12.5	12.4	10.0	8.8
	6.0	13.0	12.5	10.0	8.8
	7.5	13.4	12.5	10.0	8.8
	10.0	14.3	12.5	10.0	8.8
	12.5	15.1	12.5	10.0	8.8
	15.5	16.0	12.5	10.0	8.8
125 (14.0)	-20.0	8.2	8.0	8.0	8.0
	-15.0	9.9	9.8	9.6	9.4
	-10.0	11.7	11.5	11.2	11.0
	-5.0	13.4	13.3	12.8	11.2
	0.0	15.1	15.0	12.8	11.2
	2.5	16.0	15.8	12.8	11.2
	6.0	16.6	16.0	12.8	11.2
	7.5	17.2	16.0	12.8	11.2
	10.0	18.2	16.0	12.8	11.2
	12.5	19.3	16.0	12.8	11.2
	15.5	20.5	16.0	12.8	11.2

## 2.2a. Cooling capacity in combination with PUHY,PUY,PURY-P300,350,400YGM

### PLFY-P-VLMD-E

CA :Capacity(kW)  
SHC:Sensible Heat Capacity(kW)

Unit size (Rated kW)	Outdoor air temp.	Indoor air temp.													
		21.5°CDB 15°CWB		23°CDB 16°CWB		25°CDB 18°CWB		27°CDB 19°CWB		28°CDB 20°CWB		30°CDB 22°CWB		32°CDB 24°CWB	
		°CDB	CA	SHC	CA	SHC	CA	SHC	CA	SHC	CA	SHC	CA	SHC	CA
20 (2.2)	20.0	2.1	1.7	2.2	1.8	2.4	1.8	2.5	1.8	2.5	1.9	2.7	1.9	2.9	1.9
	22.5	2.1	1.7	2.2	1.8	2.3	1.8	2.4	1.8	2.5	1.9	2.6	1.9	2.8	1.9
	25.0	2.1	1.7	2.2	1.8	2.3	1.8	2.4	1.8	2.4	1.9	2.6	1.9	2.8	1.8
	27.5	2.1	1.7	2.1	1.8	2.3	1.8	2.3	1.8	2.4	1.9	2.5	1.8	2.7	1.8
	30.0	2.0	1.7	2.1	1.7	2.2	1.7	2.3	1.8	2.4	1.8	2.5	1.8	2.6	1.8
	32.5	2.0	1.7	2.0	1.7	2.2	1.7	2.2	1.8	2.3	1.8	2.4	1.8	2.6	1.8
	35.0	2.0	1.7	2.0	1.7	2.1	1.7	2.2	1.7	2.3	1.8	2.4	1.8	2.5	1.8
	37.5	1.9	1.7	1.9	1.7	2.1	1.7	2.1	1.7	2.2	1.8	2.4	1.8	2.5	1.7
	40.0	1.9	1.6	1.9	1.7	2.0	1.7	2.1	1.7	2.2	1.9	2.3	1.8	2.4	1.7
43.0	1.8	1.6	1.8	1.6	2.0	1.6	2.0	1.7	2.1	1.8	2.2	1.7	2.4	1.7	
25 (2.8)	20.0	2.7	2.0	2.8	2.1	3.0	2.1	3.1	2.1	3.2	2.2	3.4	2.2	3.6	2.1
	22.5	2.7	2.0	2.8	2.1	3.0	2.1	3.1	2.1	3.2	2.2	3.4	2.2	3.6	2.1
	25.0	2.7	2.0	2.7	2.1	2.9	2.0	3.0	2.1	3.1	2.2	3.3	2.1	3.5	2.1
	27.5	2.6	2.0	2.7	2.0	2.9	2.0	3.0	2.1	3.1	2.1	3.2	2.1	3.4	2.1
	30.0	2.6	2.0	2.6	2.0	2.8	2.0	2.9	2.0	3.0	2.1	3.2	2.1	3.4	2.0
	32.5	2.5	1.9	2.6	2.0	2.8	2.0	2.9	2.0	2.9	2.1	3.1	2.1	3.3	2.0
	35.0	2.5	1.9	2.5	2.0	2.7	1.9	2.8	2.0	2.9	2.1	3.1	2.0	3.2	2.0
	37.5	2.5	1.9	2.5	1.9	2.6	1.9	2.7	2.0	2.8	2.0	3.0	2.0	3.2	2.0
	40.0	2.4	1.9	2.4	1.9	2.6	1.9	2.7	1.9	3.0	2.1	2.9	2.0	3.1	2.0
43.0	2.4	1.8	2.4	1.9	2.5	1.9	2.6	1.9	2.7	2.0	2.8	2.0	3.0	1.9	
32 (3.6)	20.0	3.5	2.5	3.6	2.6	3.9	2.6	4.0	2.7	4.2	2.8	4.4	2.7	4.7	2.7
	22.5	3.5	2.5	3.6	2.6	3.8	2.6	4.0	2.6	4.1	2.7	4.3	2.7	4.6	2.6
	25.0	3.4	2.5	3.5	2.6	3.8	2.6	3.9	2.6	4.0	2.7	4.2	2.7	4.5	2.6
	27.5	3.4	2.5	3.5	2.5	3.7	2.5	3.8	2.6	3.9	2.7	4.2	2.6	4.4	2.6
	30.0	3.3	2.4	3.4	2.5	3.6	2.5	3.7	2.5	3.9	2.6	4.1	2.6	4.3	2.5
	32.5	3.3	2.4	3.3	2.5	3.5	2.5	3.7	2.5	3.8	2.6	4.0	2.6	4.2	2.5
	35.0	3.2	2.4	3.3	2.4	3.5	2.4	3.6	2.5	3.7	2.6	3.9	2.5	4.2	2.5
	37.5	3.2	2.4	3.2	2.4	3.4	2.4	3.5	2.4	3.6	2.5	3.9	2.5	4.1	2.5
	40.0	3.1	2.3	3.1	2.4	3.3	2.4	3.4	2.4	3.9	2.6	3.8	2.5	4.0	2.4
43.0	3.0	2.3	3.0	2.3	3.2	2.3	3.3	2.4	3.4	2.4	3.7	2.4	3.9	2.4	
40 (4.5)	20.0	4.4	3.0	4.5	3.1	4.9	3.1	5.0	3.1	5.2	3.2	5.5	3.2	5.9	3.1
	22.5	4.3	3.0	4.5	3.1	4.8	3.0	5.0	3.1	5.1	3.2	5.4	3.1	5.7	3.1
	25.0	4.3	3.0	4.4	3.0	4.7	3.0	4.9	3.0	5.0	3.1	5.3	3.1	5.6	3.0
	27.5	4.2	2.9	4.3	3.0	4.6	2.9	4.8	3.0	4.9	3.1	5.2	3.0	5.5	3.0
	30.0	4.1	2.9	4.2	2.9	4.5	2.9	4.7	2.9	4.8	3.0	5.1	3.0	5.4	2.9
	32.5	4.1	2.8	4.2	2.9	4.4	2.9	4.6	2.9	4.7	3.0	5.0	2.9	5.3	2.9
	35.0	4.0	2.8	4.1	2.8	4.3	2.8	4.5	2.8	4.6	2.9	4.9	2.9	5.2	2.9
	37.5	4.0	2.8	4.0	2.8	4.3	2.8	4.4	2.8	4.5	2.9	4.8	2.9	5.1	2.8
	40.0	3.9	2.7	3.9	2.7	4.2	2.7	4.3	2.8	4.9	3.1	4.7	2.8	5.0	2.8
43.0	3.8	2.7	3.8	2.7	4.1	2.7	4.2	2.7	4.3	2.8	4.6	2.8	4.8	2.7	
50 (5.6)	20.0	5.4	3.8	5.6	3.9	6.0	3.9	6.3	3.9	6.5	4.0	6.9	4.0	7.3	3.9
	22.5	5.4	3.7	5.6	3.8	6.0	3.8	6.2	3.9	6.4	4.0	6.7	3.9	7.1	3.9
	25.0	5.3	3.7	5.5	3.8	5.9	3.8	6.0	3.8	6.2	3.9	6.6	3.9	7.0	3.8
	27.5	5.2	3.7	5.4	3.7	5.7	3.7	5.9	3.8	6.1	3.9	6.5	3.8	6.9	3.8
	30.0	5.2	3.6	5.3	3.7	5.6	3.7	5.8	3.7	6.0	3.8	6.4	3.8	6.7	3.7
	32.5	5.1	3.6	5.2	3.6	5.5	3.6	5.7	3.6	5.9	3.8	6.2	3.7	6.6	3.7
	35.0	5.0	3.5	5.1	3.6	5.4	3.5	5.6	3.6	5.8	3.7	6.1	3.7	6.5	3.6
	37.5	4.9	3.5	5.0	3.5	5.3	3.5	5.5	3.5	5.7	3.7	6.0	3.6	6.3	3.6
	40.0	4.8	3.4	4.8	3.5	5.2	3.4	5.3	3.5	6.1	3.9	5.9	3.6	6.2	3.5
43.0	4.7	3.4	4.7	3.4	5.0	3.4	5.2	3.4	5.3	3.5	5.7	3.5	6.0	3.4	
63 (7.1)	20.0	6.9	4.9	7.1	5.0	7.7	5.0	8.0	5.1	8.2	5.2	8.7	5.2	9.2	5.1
	22.5	6.9	4.8	7.1	5.0	7.6	4.9	7.8	5.0	8.1	5.2	8.5	5.1	9.1	5.0
	25.0	6.8	4.8	7.0	4.9	7.4	4.9	7.7	4.9	7.9	5.1	8.4	5.0	8.9	5.0
	27.5	6.6	4.7	6.8	4.8	7.3	4.8	7.5	4.9	7.8	5.0	8.2	5.0	8.7	4.9
	30.0	6.5	4.7	6.7	4.8	7.1	4.7	7.4	4.8	7.6	5.0	8.1	4.9	8.5	4.8
	32.5	6.4	4.6	6.6	4.7	7.0	4.7	7.2	4.7	7.5	4.9	7.9	4.8	8.4	4.8
	35.0	6.3	4.6	6.4	4.6	6.8	4.6	7.1	4.7	7.3	4.8	7.7	4.8	8.2	4.7
	37.5	6.2	4.5	6.3	4.6	6.7	4.5	6.9	4.6	7.2	4.8	7.6	4.7	8.0	4.6
	40.0	6.1	4.5	6.1	4.5	6.6	4.5	6.8	4.5	7.7	5.0	7.4	4.6	7.8	4.6
43.0	6.0	4.4	6.0	4.4	6.4	4.4	6.6	4.5	6.8	4.6	7.2	4.6	7.6	4.5	
80 (9.0)	20.0	8.7	6.1	9.0	6.3	9.7	6.3	10.1	6.4	10.4	6.6	11.0	6.5	11.7	6.5
	22.5	8.7	6.1	9.0	6.3	9.6	6.3	9.9	6.3	10.2	6.6	10.8	6.5	11.5	6.4
	25.0	8.6	6.1	8.8	6.2	9.4	6.2	9.7	6.2	10.0	6.5	10.6	6.4	11.3	6.3
	27.5	8.4	6.0	8.6	6.1	9.2	6.1	9.5	6.2	9.8	6.4	10.4	6.3	11.0	6.2
	30.0	8.3	5.9	8.5	6.0	9.0	6.0	9.4	6.1	9.6	6.3	10.3	6.2	10.8	6.1
	32.5	8.1	5.8	8.3	6.0	8.9	5.9	9.2	6.0	9.5	6.2	10.0	6.1	10.6	6.0
	35.0	8.0	5.8	8.1	5.9	8.6	5.8	9.0	5.9	9.3	6.1	9.8	6.0	10.4	5.9
	37.5	7.9	5.7	8.0	5.8	8.5	5.7	8.8	5.8	9.1	6.1	9.6	6.0	10.2	5.9
	40.0	7.8	5.7	7.8	5.7	8.3	5.7	8.6	5.7	9.8	6.4	9.4	5.9	9.9	5.8
43.0	7.6	5.5	7.6	5.6	8.1	5.6	8.4	5.6	8.6	5.8	9.1	5.8	9.7	5.7	

PLFY-P-VLMD-E

## Cooling capacity in combination with PUHY,PUY,PURY-P300,350,400YGM

### PLFY-P-VLMD-E

CA :Capacity(kW)  
SHC:Sensible Heat Capacity(kW)

Unit size (Rated kW)	Outdoor air temp.	Indoor air temp.													
		21.5°CDB 15°CWB		23°CDB 16°CWB		25°CDB 18°CWB		27°CDB 19°CWB		28°CDB 20°CWB		30°CDB 22°CWB		32°CDB 24°CWB	
		°CDB	CA	SHC	CA	SHC	CA	SHC	CA	SHC	CA	SHC	CA	SHC	CA
100 (11.2)	20.0	10.9	7.8	11.3	8.0	12.1	8.0	12.5	8.1	12.9	8.4	13.7	8.3	14.6	8.2
	22.5	10.8	7.8	11.2	8.0	11.9	7.9	12.3	8.0	12.7	8.3	13.5	8.2	14.3	8.1
	25.0	10.7	7.7	11.0	7.9	11.7	7.8	12.1	7.9	12.5	8.2	13.2	8.1	14.0	8.0
	27.5	10.5	7.6	10.8	7.8	11.5	7.7	11.9	7.8	12.2	8.1	13.0	8.0	13.7	7.9
	30.0	10.3	7.5	10.5	7.7	11.3	7.6	11.6	7.7	12.0	8.0	12.8	7.9	13.4	7.8
	32.5	10.1	7.4	10.4	7.6	11.0	7.5	11.4	7.6	11.8	7.9	12.4	7.8	13.2	7.7
	35.0	10.0	7.3	10.1	7.5	10.8	7.4	11.2	7.6	11.5	7.8	12.2	7.7	12.9	7.6
	37.5	9.9	7.3	9.9	7.4	10.6	7.3	10.9	7.4	11.3	7.7	12.0	7.6	12.7	7.5
	40.0	9.7	7.2	9.7	7.3	10.4	7.2	10.7	7.3	11.2	8.1	11.7	7.5	12.4	7.4
	43.0	9.4	7.1	9.4	7.1	10.1	7.1	10.4	7.2	10.7	7.5	11.4	7.4	12.0	7.3
125 (14.0)	20.0	13.6	9.9	14.1	10.2	15.1	10.2	15.7	10.4	16.2	10.7	17.2	10.6	18.2	10.4
	22.5	13.5	9.9	14.0	10.2	14.9	10.1	15.4	10.2	15.9	10.6	16.8	10.5	17.9	10.3
	25.0	13.4	9.8	13.7	10.0	14.6	10.0	15.1	10.1	15.6	10.5	16.5	10.3	17.5	10.2
	27.5	13.1	9.7	13.4	9.9	14.4	9.8	14.8	10.0	15.3	10.4	16.2	10.2	17.2	10.1
	30.0	12.9	9.5	13.2	9.8	14.1	9.7	14.6	9.9	15.0	10.2	16.0	10.1	16.8	9.9
	32.5	12.7	9.4	13.0	9.7	13.8	9.6	14.3	9.8	14.7	10.1	15.5	10.0	16.5	9.8
	35.0	12.5	9.3	12.7	9.5	13.4	9.4	14.0	9.6	14.4	10.0	15.3	9.9	16.2	9.7
	37.5	12.3	9.3	12.4	9.4	13.2	9.3	13.7	9.5	14.1	9.9	15.0	9.7	15.8	9.6
	40.0	12.1	9.2	12.1	9.3	13.0	9.2	13.4	9.4	15.2	10.3	14.6	9.6	15.5	9.4
	43.0	11.8	9.0	11.8	9.1	12.6	9.1	13.0	9.2	13.4	9.6	14.2	9.4	15.1	9.3

## 2.2b. Heating capacity in combination with PUHY,PUY,PURY-P300,350,400YGM

### PLFY-P-VLMD-E

Unit size (Rated kW)	Outdoor air temp. °CWB	Indoor air temp.:°CDB			
		15.0 SHC	20.0 SHC	25.0 SHC	27.0 SHC
20 (2.2)	-20.0	1.3	1.3	1.3	1.2
	-15.0	1.5	1.5	1.5	1.5
	-10.0	1.8	1.8	1.7	1.6
	-5.0	2.0	2.0	1.9	1.6
	0.0	2.3	2.3	1.9	1.6
	2.5	2.4	2.4	1.9	1.6
	6.0	2.6	2.5	1.9	1.6
	7.5	2.7	2.5	1.9	1.6
	10.0	2.8	2.5	1.9	1.6
	12.5	2.9	2.5	1.9	1.6
	15.5	2.9	2.5	1.9	1.6
25 (2.8)	-20.0	1.7	1.6	1.6	1.5
	-15.0	1.9	1.9	1.9	1.9
	-10.0	2.2	2.2	2.2	2.0
	-5.0	2.6	2.6	2.4	2.0
	0.0	2.9	2.9	2.4	2.0
	2.5	3.1	3.0	2.4	2.0
	6.0	3.3	3.2	2.4	2.0
	7.5	3.4	3.2	2.4	2.0
	10.0	3.5	3.2	2.4	2.0
	12.5	3.7	3.2	2.4	2.0
	15.5	3.7	3.2	2.4	2.0
32 (3.6)	-20.0	2.1	2.0	2.0	1.9
	-15.0	2.4	2.4	2.4	2.3
	-10.0	2.8	2.8	2.7	2.6
	-5.0	3.2	3.2	3.0	2.6
	0.0	3.6	3.6	3.0	2.6
	2.5	3.8	3.8	3.0	2.6
	6.0	4.1	4.0	3.0	2.6
	7.5	4.2	4.0	3.0	2.6
	10.0	4.4	4.0	3.0	2.6
	12.5	4.6	4.0	3.0	2.6
	15.5	4.6	4.0	3.0	2.6
40 (4.5)	-20.0	2.6	2.5	2.5	2.4
	-15.0	3.0	3.0	3.0	2.9
	-10.0	3.5	3.5	3.4	3.2
	-5.0	4.0	4.0	3.8	3.2
	0.0	4.5	4.5	3.8	3.2
	2.5	4.8	4.7	3.8	3.2
	6.0	5.1	5.0	3.8	3.2
	7.5	5.3	5.0	3.8	3.2
	10.0	5.5	5.0	3.8	3.2
	12.5	5.8	5.0	3.8	3.2
	15.5	5.8	5.0	3.8	3.2
50 (5.6)	-20.0	3.3	3.2	3.2	3.0
	-15.0	3.8	3.8	3.8	3.7
	-10.0	4.4	4.4	4.3	4.0
	-5.0	5.0	5.0	4.7	4.0
	0.0	5.7	5.7	4.7	4.0
	2.5	6.0	6.0	4.7	4.0
	6.0	6.5	6.3	4.7	4.0
	7.5	6.7	6.3	4.7	4.0
	10.0	7.0	6.3	4.7	4.0
	12.5	7.2	6.3	4.7	4.0
	15.5	7.2	6.3	4.7	4.0
63 (7.1)	-20.0	4.2	4.0	4.0	3.8
	-15.0	4.8	4.8	4.8	4.6
	-10.0	5.6	5.6	5.5	5.1
	-5.0	6.4	6.4	6.0	5.1
	0.0	7.2	7.2	6.0	5.1
	2.5	7.6	7.6	6.0	5.1
	6.0	8.2	8.0	6.0	5.1
	7.5	8.5	8.0	6.0	5.1
	10.0	8.8	8.0	6.0	5.1
	12.5	9.2	8.0	6.0	5.1
	15.5	9.2	8.0	6.0	5.1
80 (9.0)	-20.0	5.2	5.0	5.0	4.8
	-15.0	6.0	6.0	6.0	5.8
	-10.0	7.0	7.0	6.9	6.4
	-5.0	8.0	8.0	7.5	6.4
	0.0	9.0	9.0	7.5	6.4
	2.5	9.6	9.5	7.5	6.4
	6.0	10.3	10.0	7.5	6.4
	7.5	10.6	10.0	7.5	6.4
	10.0	11.1	10.0	7.5	6.4
	12.5	11.5	10.0	7.5	6.4
	15.5	11.5	10.0	7.5	6.4

SHC:Sensible Heat Capacity(kW)

Unit size (Rated kW)	Outdoor air temp. °CWB	Indoor air temp.:°CDB			
		15.0 SHC	20.0 SHC	25.0 SHC	27.0 SHC
100 (11.2)	-20.0	6.5	6.3	6.3	6.0
	-15.0	7.5	7.5	7.5	7.3
	-10.0	8.8	8.8	8.6	8.0
	-5.0	10.0	10.0	9.4	8.0
	0.0	11.3	11.3	9.4	8.0
	2.5	11.9	11.8	9.4	8.0
	6.0	12.8	12.5	9.4	8.0
	7.5	13.3	12.5	9.4	8.0
	10.0	13.8	12.5	9.4	8.0
	12.5	14.4	12.5	9.4	8.0
	15.5	14.4	12.5	9.4	8.0
125 (14.0)	-20.0	8.3	8.0	8.0	7.7
	-15.0	9.6	9.6	9.6	9.3
	-10.0	11.2	11.2	11.0	10.2
	-5.0	12.8	12.8	12.0	10.2
	0.0	14.4	14.4	12.0	10.2
	2.5	15.3	15.1	12.0	10.2
	6.0	16.4	16.0	12.0	10.2
	7.5	17.0	16.0	12.0	10.2
	10.0	17.7	16.0	12.0	10.2
	12.5	18.4	16.0	12.0	10.2
	15.5	18.4	16.0	12.0	10.2

PLFY-P-VLMD-E



### 2.3a. Cooling capacity in combination with PUHY,PURY-P500,650YGM

**PLFY-P-VLMD-E** CA :Capacity(kW)  
SHC:Sensible Heat Capacity(kW)

Unit size (Rated kW)	Outdoor air temp. °CDB	Indoor air temp.													
		21.5°CDB 15°CWB		23°CDB 16°CWB		25°CDB 18°CWB		27°CDB 19°CWB		28°CDB 20°CWB		30°CDB 22°CWB		32°CDB 24°CWB	
		CA	SHC	CA	SHC	CA	SHC	CA	SHC	CA	SHC	CA	SHC	CA	SHC
20 (2.2)	20.0	2.1	1.7	2.1	1.8	2.3	1.8	2.4	1.8	2.5	1.9	2.6	1.9	2.8	1.8
	22.5	2.1	1.7	2.1	1.8	2.3	1.8	2.3	1.8	2.4	1.9	2.6	1.9	2.7	1.8
	25.0	2.0	1.7	2.1	1.8	2.2	1.7	2.3	1.8	2.4	1.9	2.6	1.8	2.7	1.8
	27.5	2.0	1.7	2.1	1.7	2.2	1.7	2.3	1.8	2.4	1.9	2.5	1.8	2.6	1.8
	30.0	2.0	1.7	2.0	1.7	2.2	1.7	2.3	1.8	2.4	1.8	2.5	1.8	2.7	1.8
	32.5	2.0	1.7	2.0	1.7	2.2	1.7	2.2	1.8	2.3	1.8	2.5	1.8	2.6	1.8
	35.0	2.0	1.7	2.0	1.7	2.1	1.7	2.2	1.7	2.3	1.8	2.5	1.8	2.6	1.8
	37.5	1.9	1.7	2.0	1.7	2.1	1.7	2.2	1.7	2.3	1.8	2.4	1.8	2.6	1.8
	40.0	1.9	1.6	1.9	1.7	2.1	1.7	2.1	1.7	2.2	1.8	2.4	1.8	2.6	1.8
43.0	1.9	1.6	1.9	1.7	2.1	1.7	2.1	1.7	2.2	1.8	2.4	1.8	2.6	1.8	
25 (2.8)	20.0	2.6	2.0	2.7	2.1	2.9	2.0	3.0	2.1	3.1	2.2	3.3	2.1	3.5	2.1
	22.5	2.6	2.0	2.7	2.0	2.9	2.0	3.0	2.1	3.1	2.1	3.3	2.1	3.5	2.1
	25.0	2.6	2.0	2.7	2.0	2.9	2.0	2.9	2.0	3.1	2.1	3.2	2.1	3.5	2.1
	27.5	2.6	2.0	2.6	2.0	2.8	2.0	2.9	2.0	3.0	2.1	3.2	2.1	3.4	2.0
	30.0	2.5	1.9	2.6	2.0	2.8	2.0	2.9	2.0	3.0	2.1	3.2	2.1	3.4	2.1
	32.5	2.5	1.9	2.6	2.0	2.7	2.0	2.8	2.0	3.0	2.1	3.2	2.1	3.4	2.0
	35.0	2.5	1.9	2.5	2.0	2.7	2.0	2.8	2.0	2.9	2.1	3.1	2.1	3.3	2.0
	37.5	2.5	1.9	2.5	1.9	2.7	1.9	2.8	2.0	2.9	2.1	3.1	2.0	3.3	2.0
	40.0	2.4	1.9	2.5	1.9	2.7	1.9	2.7	1.9	2.9	2.0	3.1	2.0	3.3	2.0
43.0	2.4	1.9	2.5	1.9	2.6	1.9	2.7	1.9	2.8	2.0	3.0	2.0	3.2	2.0	
32 (3.6)	20.0	3.4	2.5	3.5	2.6	3.7	2.5	3.9	2.6	4.0	2.7	4.2	2.7	4.5	2.6
	22.5	3.4	2.5	3.5	2.5	3.7	2.5	3.8	2.6	4.0	2.7	4.2	2.6	4.5	2.6
	25.0	3.3	2.5	3.4	2.5	3.7	2.5	3.8	2.5	3.9	2.7	4.2	2.6	4.4	2.6
	27.5	3.3	2.4	3.4	2.5	3.6	2.5	3.7	2.5	3.9	2.6	4.1	2.6	4.3	2.5
	30.0	3.3	2.4	3.3	2.5	3.6	2.5	3.7	2.5	3.9	2.6	4.1	2.6	4.4	2.6
	32.5	3.2	2.4	3.3	2.5	3.5	2.4	3.6	2.5	3.8	2.6	4.1	2.6	4.3	2.5
	35.0	3.2	2.4	3.3	2.4	3.5	2.4	3.6	2.5	3.7	2.6	4.0	2.6	4.3	2.5
	37.5	3.2	2.4	3.2	2.4	3.5	2.4	3.5	2.4	3.7	2.6	4.0	2.5	4.2	2.5
	40.0	3.1	2.3	3.2	2.4	3.4	2.4	3.5	2.4	3.7	2.5	4.0	2.5	4.2	2.5
43.0	3.1	2.3	3.2	2.4	3.4	2.4	3.5	2.4	3.6	2.5	3.9	2.5	4.2	2.5	
40 (4.5)	20.0	4.3	2.9	4.4	3.0	4.7	3.0	4.8	3.0	5.0	3.1	5.3	3.1	5.7	3.0
	22.5	4.2	2.9	4.3	3.0	4.6	3.0	4.8	3.0	5.0	3.1	5.3	3.1	5.6	3.0
	25.0	4.2	2.9	4.3	2.9	4.6	2.9	4.7	3.0	4.9	3.1	5.2	3.0	5.6	3.0
	27.5	4.1	2.9	4.2	2.9	4.5	2.9	4.7	2.9	4.9	3.1	5.2	3.0	5.4	2.9
	30.0	4.1	2.8	4.2	2.9	4.5	2.9	4.6	2.9	4.8	3.0	5.1	3.0	5.4	3.0
	32.5	4.1	2.8	4.1	2.9	4.4	2.8	4.5	2.9	4.8	3.0	5.1	3.0	5.4	2.9
	35.0	4.0	2.8	4.1	2.8	4.4	2.8	4.5	2.8	4.7	3.0	5.0	3.0	5.4	2.9
	37.5	4.0	2.8	4.0	2.8	4.3	2.8	4.4	2.8	4.7	3.0	5.0	2.9	5.3	2.9
	40.0	3.9	2.7	4.0	2.8	4.3	2.8	4.4	2.8	4.6	2.9	5.0	2.9	5.3	2.9
43.0	3.9	2.7	3.9	2.8	4.2	2.8	4.3	2.8	4.5	2.9	4.9	2.9	5.2	2.9	
50 (5.6)	20.0	5.3	3.7	5.5	3.8	5.8	3.8	6.0	3.8	6.2	3.9	6.6	3.9	7.1	3.8
	22.5	5.3	3.7	5.4	3.7	5.8	3.7	5.9	3.8	6.2	3.9	6.6	3.9	7.0	3.8
	25.0	5.2	3.6	5.3	3.7	5.7	3.7	5.9	3.7	6.1	3.9	6.5	3.8	6.9	3.8
	27.5	5.2	3.6	5.3	3.7	5.7	3.7	5.8	3.7	6.0	3.8	6.4	3.8	6.7	3.7
	30.0	5.1	3.6	5.2	3.6	5.6	3.6	5.8	3.7	6.0	3.8	6.4	3.8	6.8	3.7
	32.5	5.0	3.5	5.2	3.6	5.5	3.6	5.7	3.6	5.9	3.8	6.3	3.8	6.7	3.7
	35.0	5.0	3.5	5.1	3.6	5.5	3.6	5.6	3.6	5.8	3.7	6.3	3.7	6.7	3.7
	37.5	4.9	3.5	5.0	3.5	5.4	3.5	5.5	3.6	5.8	3.7	6.2	3.7	6.6	3.7
	40.0	4.8	3.4	5.0	3.5	5.3	3.5	5.4	3.5	5.7	3.7	6.2	3.7	6.6	3.6
43.0	4.8	3.4	4.9	3.5	5.3	3.5	5.4	3.5	5.7	3.7	6.0	3.6	6.5	3.6	
63 (7.1)	20.0	6.7	4.8	6.9	4.9	7.4	4.9	7.6	4.9	7.9	5.1	8.4	5.0	8.9	5.0
	22.5	6.7	4.7	6.9	4.8	7.3	4.8	7.5	4.9	7.8	5.1	8.3	5.0	8.8	4.9
	25.0	6.6	4.7	6.8	4.8	7.2	4.8	7.5	4.8	7.7	5.0	8.2	5.0	8.8	4.9
	27.5	6.5	4.7	6.7	4.8	7.2	4.8	7.4	4.8	7.7	5.0	8.2	4.9	8.5	4.8
	30.0	6.5	4.6	6.6	4.7	7.1	4.7	7.3	4.8	7.6	5.0	8.1	4.9	8.6	4.8
	32.5	6.4	4.6	6.5	4.7	7.0	4.7	7.2	4.7	7.5	4.9	8.0	4.9	8.5	4.8
	35.0	6.3	4.6	6.4	4.6	6.9	4.6	7.1	4.7	7.4	4.9	8.0	4.9	8.4	4.8
	37.5	6.2	4.5	6.4	4.6	6.8	4.6	7.0	4.6	7.3	4.9	7.8	4.8	8.4	4.8
	40.0	6.1	4.5	6.3	4.6	6.8	4.6	6.9	4.6	7.2	4.8	7.8	4.8	8.3	4.7
43.0	6.1	4.4	6.2	4.5	6.7	4.5	6.8	4.5	7.2	4.8	7.7	4.7	8.2	4.7	
80 (9.0)	20.0	8.5	6.0	8.8	6.2	9.4	6.2	9.6	6.2	10.0	6.5	10.6	6.4	11.3	6.3
	22.5	8.5	6.0	8.7	6.1	9.3	6.1	9.5	6.2	9.9	6.4	10.6	6.4	11.2	6.3
	25.0	8.4	6.0	8.6	6.1	9.2	6.1	9.5	6.1	9.8	6.4	10.4	6.3	11.1	6.2
	27.5	8.3	5.9	8.5	6.0	9.1	6.0	9.4	6.1	9.7	6.3	10.4	6.3	10.8	6.1
	30.0	8.2	5.9	8.4	6.0	9.0	6.0	9.3	6.0	9.6	6.3	10.3	6.2	10.9	6.1
	32.5	8.1	5.8	8.3	5.9	8.8	5.9	9.1	6.0	9.5	6.3	10.2	6.2	10.8	6.1
	35.0	8.0	5.8	8.1	5.9	8.8	5.9	9.0	5.9	9.4	6.2	10.1	6.2	10.7	6.1
	37.5	7.9	5.7	8.1	5.8	8.6	5.8	8.9	5.9	9.3	6.2	9.9	6.1	10.6	6.0
	40.0	7.8	5.7	8.0	5.8	8.6	5.8	8.7	5.8	9.2	6.1	9.9	6.1	10.5	6.0
43.0	7.7	5.6	7.9	5.7	8.5	5.7	8.6	5.8	9.1	6.1	9.7	6.0	10.4	6.0	

**PLFY-P-VLMD-E**

## Cooling capacity in combination with PUHY,PURY-P500,650YGM

### PLFY-P-VLMD-E

CA :Capacity(kW)  
SHC:Sensible Heat Capacity(kW)

Unit size (Rated kW)	Outdoor air temp.	Indoor air temp.													
		21.5°CDB 15°CWB		23°CDB 16°CWB		25°CDB 18°CWB		27°CDB 19°CWB		28°CDB 20°CWB		30°CDB 22°CWB		32°CDB 24°CWB	
		°CDB	CA	SHC	CA	SHC	CA	SHC	CA	SHC	CA	SHC	CA	SHC	CA
100 (11.2)	20.0	10.6	7.7	10.9	7.9	11.6	7.8	12.0	7.9	12.5	8.2	13.2	8.1	14.1	8.0
	22.5	10.5	7.6	10.8	7.8	11.5	7.8	11.9	7.8	12.3	8.2	13.2	8.1	13.9	8.0
	25.0	10.4	7.6	10.7	7.8	11.4	7.7	11.8	7.8	12.2	8.1	13.0	8.0	13.8	7.9
	27.5	10.3	7.5	10.5	7.7	11.3	7.7	11.6	7.7	12.1	8.1	12.9	8.0	13.4	7.8
	30.0	10.2	7.5	10.4	7.6	11.2	7.6	11.5	7.7	12.0	8.0	12.8	7.9	13.6	7.8
	32.5	10.1	7.4	10.3	7.6	11.0	7.5	11.3	7.6	11.9	8.0	12.7	7.9	13.4	7.8
	35.0	10.0	7.3	10.1	7.5	10.9	7.5	11.2	7.6	11.6	7.9	12.5	7.9	13.3	7.7
	37.5	9.9	7.3	10.0	7.4	10.8	7.4	11.0	7.5	11.6	7.9	12.4	7.8	13.2	7.7
	40.0	9.7	7.2	9.9	7.4	10.7	7.4	10.9	7.4	11.4	7.8	12.3	7.8	13.1	7.7
	43.0	9.6	7.2	9.8	7.3	10.5	7.3	10.8	7.4	11.3	7.7	12.1	7.7	13.0	7.6
125 (14.0)	20.0	13.2	9.7	13.7	10.0	14.6	9.9	15.0	10.1	15.6	10.5	16.5	10.3	17.6	10.2
	22.5	13.2	9.7	13.5	9.9	14.4	9.9	14.8	10.0	15.4	10.4	16.5	10.3	17.4	10.2
	25.0	13.0	9.6	13.4	9.9	14.3	9.8	14.7	9.9	15.3	10.4	16.2	10.2	17.3	10.1
	27.5	12.9	9.5	13.2	9.8	14.1	9.7	14.6	9.9	15.1	10.3	16.1	10.2	16.8	9.9
	30.0	12.7	9.5	13.0	9.7	14.0	9.7	14.4	9.8	15.0	10.2	16.0	10.1	16.9	10.0
	32.5	12.6	9.4	12.9	9.6	13.7	9.6	14.1	9.7	14.8	10.2	15.8	10.1	16.8	9.9
	35.0	12.5	9.3	12.7	9.5	13.7	9.5	14.0	9.6	14.6	10.1	15.7	10.0	16.7	9.9
	37.5	12.3	9.3	12.6	9.5	13.4	9.4	13.8	9.5	14.5	10.0	15.5	9.9	16.5	9.8
	40.0	12.1	9.2	12.4	9.4	13.4	9.4	13.6	9.5	14.3	9.9	15.4	9.9	16.4	9.8
	43.0	12.0	9.1	12.3	9.3	13.2	9.3	13.4	9.4	14.1	9.9	15.1	9.8	16.2	9.7

### 2.3b. Heating capacity in combination with PUHY,PURY-P500,650YGM

#### PLFY-P-VLMD-E

Unit size (Rated kW)	Outdoor air temp. °CWB	Indoor air temp.:°CDB			
		15.0	20.0	25.0	27.0
		SHC	SHC	SHC	SHC
20 (2.2)	-20.0	1.3	1.3	1.3	1.3
	-15.0	1.6	1.5	1.5	1.5
	-10.0	1.8	1.8	1.7	1.7
	-5.0	2.1	2.0	1.9	1.8
	0.0	2.3	2.3	2.0	1.8
	2.5	2.4	2.4	2.0	1.8
	6.0	2.6	2.5	2.0	1.8
	7.5	2.7	2.5	2.0	1.8
	10.0	2.8	2.5	2.0	1.8
	12.5	2.9	2.5	2.0	1.8
15.5	2.9	2.5	2.0	1.8	
25 (2.8)	-20.0	1.7	1.6	1.6	1.6
	-15.0	2.0	1.9	1.9	1.9
	-10.0	2.3	2.2	2.2	2.1
	-5.0	2.6	2.6	2.5	2.3
	0.0	2.9	2.9	2.5	2.3
	2.5	3.1	3.0	2.5	2.3
	6.0	3.3	3.2	2.5	2.3
	7.5	3.4	3.2	2.5	2.3
	10.0	3.6	3.2	2.5	2.3
	12.5	3.7	3.2	2.5	2.3
15.5	3.7	3.2	2.5	2.3	
32 (3.6)	-20.0	2.1	2.0	2.0	2.0
	-15.0	2.5	2.4	2.4	2.3
	-10.0	2.9	2.8	2.7	2.6
	-5.0	3.3	3.2	3.1	2.8
	0.0	3.7	3.6	3.2	2.8
	2.5	3.8	3.8	3.2	2.8
	6.0	4.1	4.0	3.2	2.8
	7.5	4.2	4.0	3.2	2.8
	10.0	4.4	4.0	3.2	2.8
	12.5	4.6	4.0	3.2	2.8
15.5	4.6	4.0	3.2	2.8	
40 (4.5)	-20.0	2.7	2.6	2.6	2.5
	-15.0	3.1	3.0	3.0	2.9
	-10.0	3.6	3.5	3.4	3.3
	-5.0	4.1	4.0	3.9	3.5
	0.0	4.6	4.5	4.0	3.5
	2.5	4.8	4.8	4.0	3.5
	6.0	5.2	5.0	4.0	3.5
	7.5	5.3	5.0	4.0	3.5
	10.0	5.6	5.0	4.0	3.5
	12.5	5.8	5.0	4.0	3.5
15.5	5.8	5.0	4.0	3.5	
50 (5.6)	-20.0	3.3	3.2	3.2	3.2
	-15.0	3.9	3.8	3.8	3.7
	-10.0	4.5	4.4	4.3	4.2
	-5.0	5.2	5.0	4.9	4.4
	0.0	5.8	5.7	5.0	4.4
	2.5	6.0	6.0	5.0	4.4
	6.0	6.5	6.3	5.0	4.4
	7.5	6.7	6.3	5.0	4.4
	10.0	7.0	6.3	5.0	4.4
	12.5	7.3	6.3	5.0	4.4
15.5	7.3	6.3	5.0	4.4	
63 (7.1)	-20.0	4.2	4.1	4.1	4.0
	-15.0	5.0	4.8	4.8	4.6
	-10.0	5.8	5.6	5.4	5.3
	-5.0	6.6	6.4	6.2	5.6
	0.0	7.4	7.2	6.4	5.6
	2.5	7.7	7.6	6.4	5.6
	6.0	8.2	8.0	6.4	5.6
	7.5	8.5	8.0	6.4	5.6
	10.0	8.9	8.0	6.4	5.6
	12.5	9.3	8.0	6.4	5.6
15.5	9.3	8.0	6.4	5.6	
80 (9.0)	-20.0	5.3	5.1	5.1	5.0
	-15.0	6.3	6.1	6.0	5.8
	-10.0	7.2	7.0	6.8	6.6
	-5.0	8.2	8.0	7.7	7.1
	0.0	9.2	9.0	8.0	7.1
	2.5	9.6	9.5	8.0	7.1
	6.0	10.3	10.0	8.0	7.1
	7.5	10.6	10.0	8.0	7.1
	10.0	11.1	10.0	8.0	7.1
	12.5	11.6	10.0	8.0	7.1
15.5	11.6	10.0	8.0	7.1	

SHC:Sensible Heat Capacity(kW)

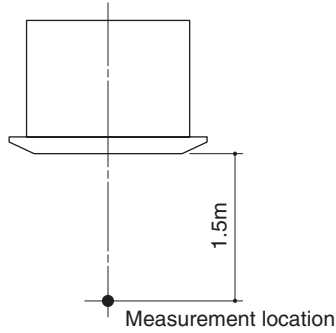
Unit size (Rated kW)	Outdoor air temp. °CWB	Indoor air temp.:°CDB			
		15.0	20.0	25.0	27.0
		SHC	SHC	SHC	SHC
100 (11.2)	-20.0	6.6	6.4	6.4	6.3
	-15.0	7.8	7.6	7.5	7.3
	-10.0	9.0	8.8	8.5	8.3
	-5.0	10.3	10.0	9.6	8.8
	0.0	11.5	11.3	9.9	8.8
	2.5	12.0	11.9	9.9	8.8
	6.0	12.9	12.5	9.9	8.8
	7.5	13.3	12.5	9.9	8.8
	10.0	13.9	12.5	9.9	8.8
	12.5	14.5	12.5	9.9	8.8
15.5	14.5	12.5	9.9	8.8	
125 (14.0)	-20.0	8.5	8.2	8.2	8.0
	-15.0	10.0	9.7	9.6	9.3
	-10.0	11.5	11.2	10.9	10.6
	-5.0	13.1	12.8	12.3	11.3
	0.0	14.7	14.4	12.7	11.3
	2.5	15.4	15.2	12.7	11.3
	6.0	16.5	16.0	12.7	11.3
	7.5	17.0	16.0	12.7	11.3
	10.0	17.8	16.0	12.7	11.3
	12.5	18.6	16.0	12.7	11.3
15.5	18.6	16.0	12.7	11.3	



# 3. Sound Levels

## 3.1 Noise levels

Cassette ceiling

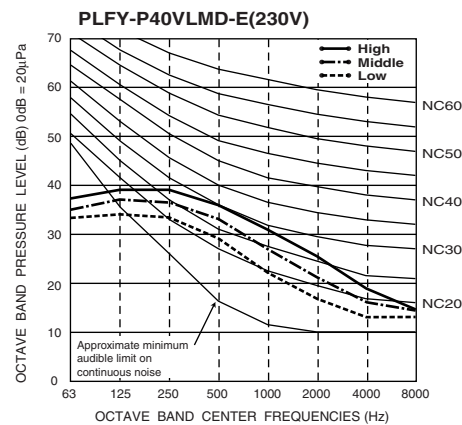
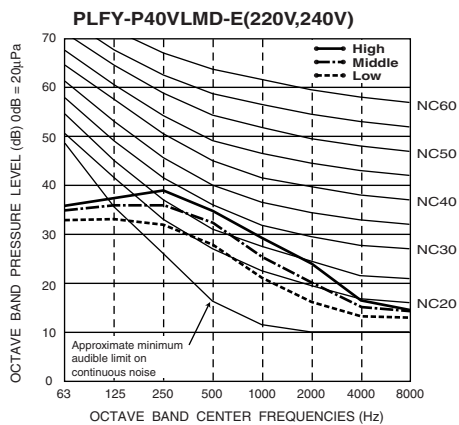
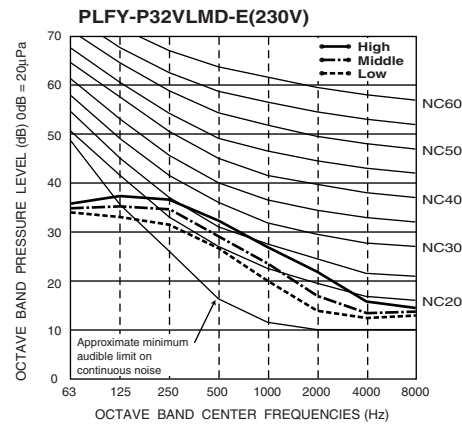
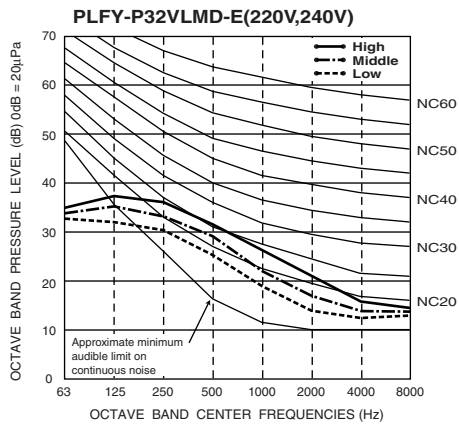
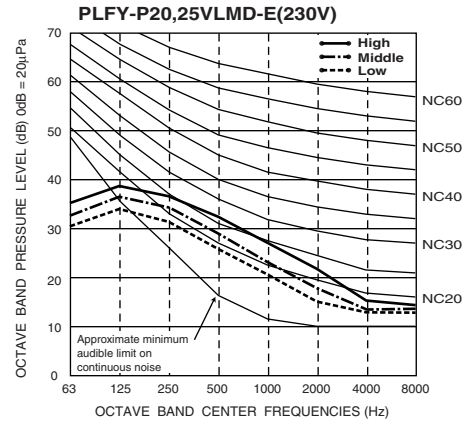
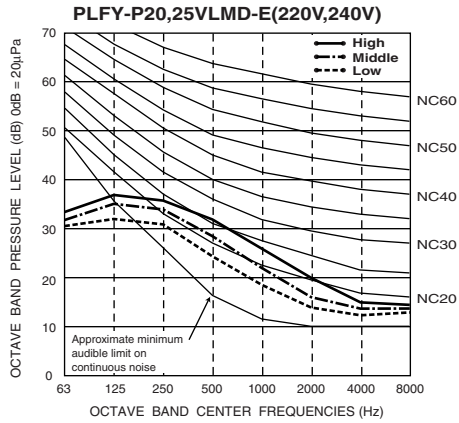


Noise level at anechoic room  
( Low - Middle - High )

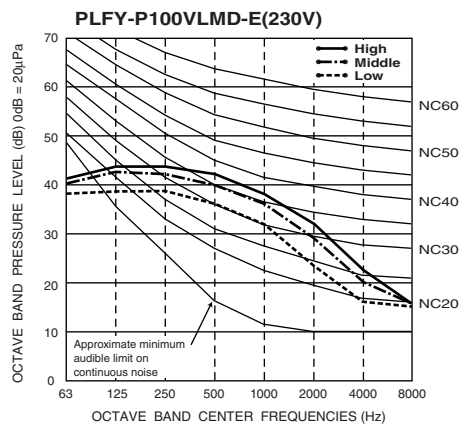
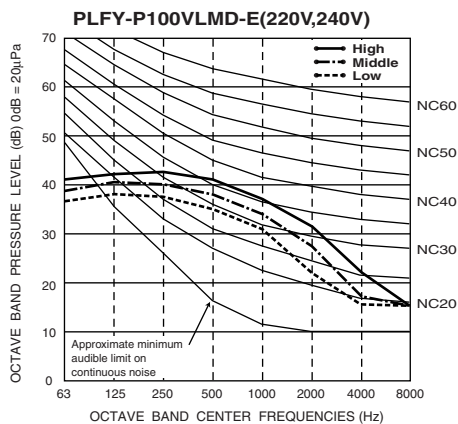
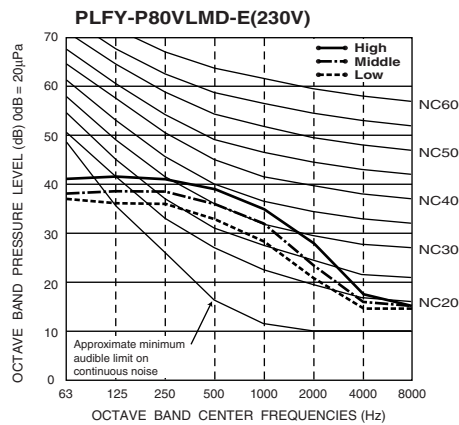
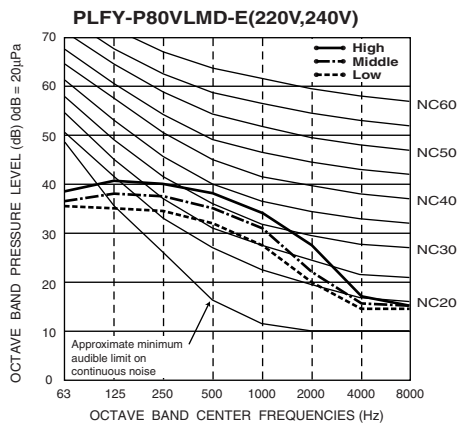
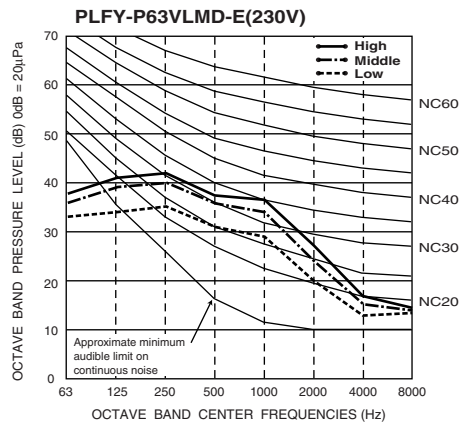
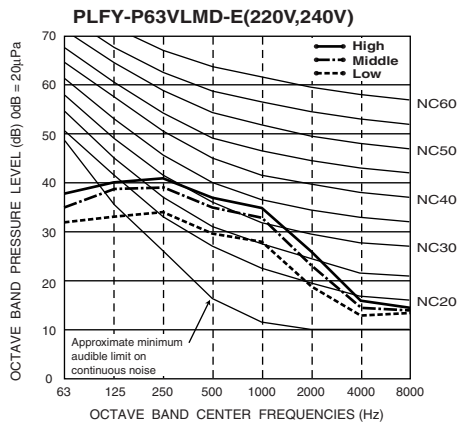
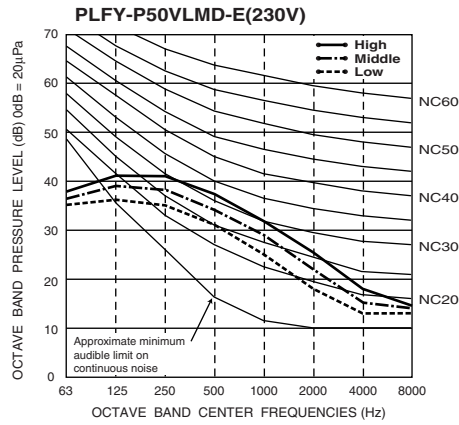
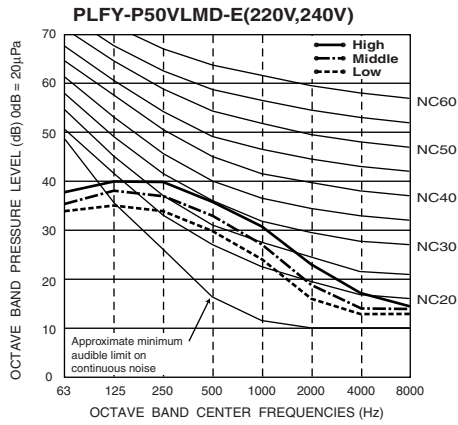
Unit : dB(A)

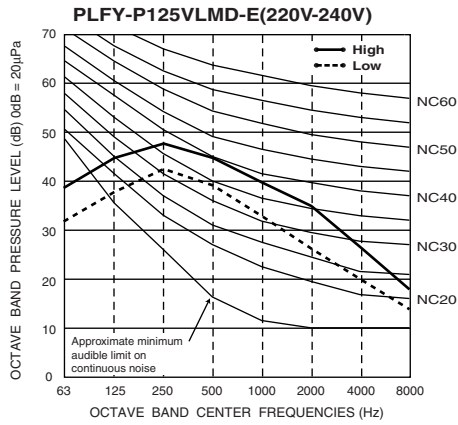
Model	Noise level (A weighted)	
	220V,240V	230V
PLFY-P20VLMD-E	27-30-33	28-31-34
PLFY-P25VLMD-E		
PLFY-P32VLMD-E		
PLFY-P40VLMD-E	29-33-36	30-34-37
PLFY-P50VLMD-E	31-34-37	32-35-38
PLFY-P63VLMD-E	32-37-39	33-38-40
PLFY-P80VLMD-E	33-36-39	34-37-40
PLFY-P100VLMD-E	36-39-42	37-41-43
PLFY-P125VLMD-E	40-42-44-46	

## 3.2 NC curves

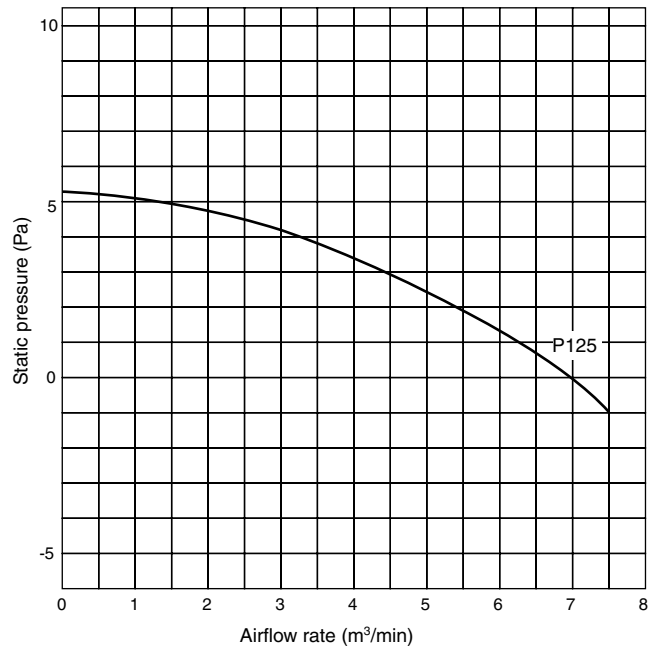
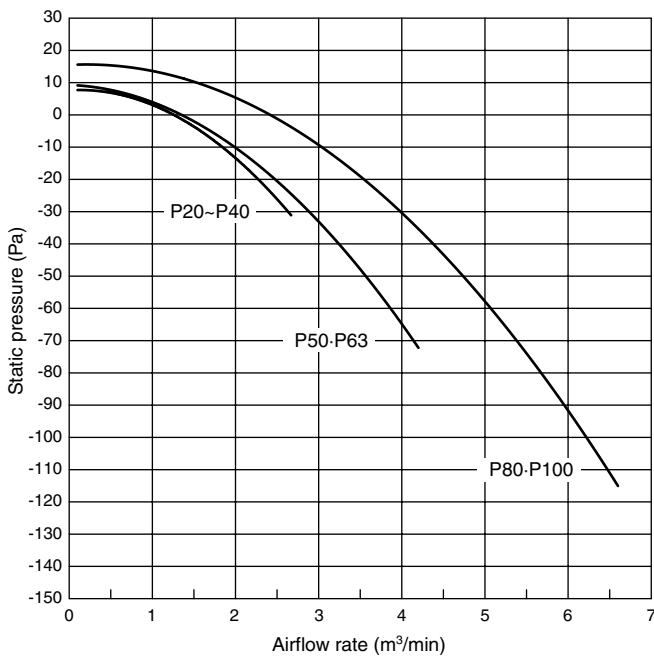


PLFY-P-VLMD-E





### 3.3 OA Intake-static pressure curve



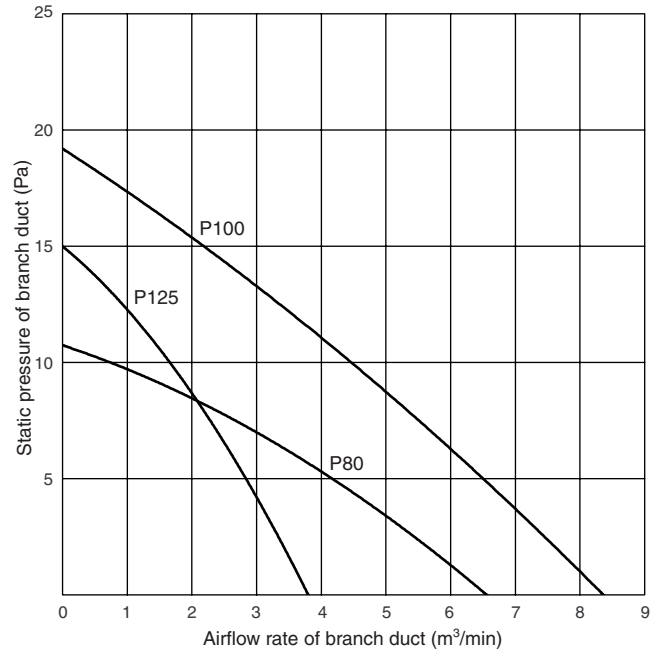
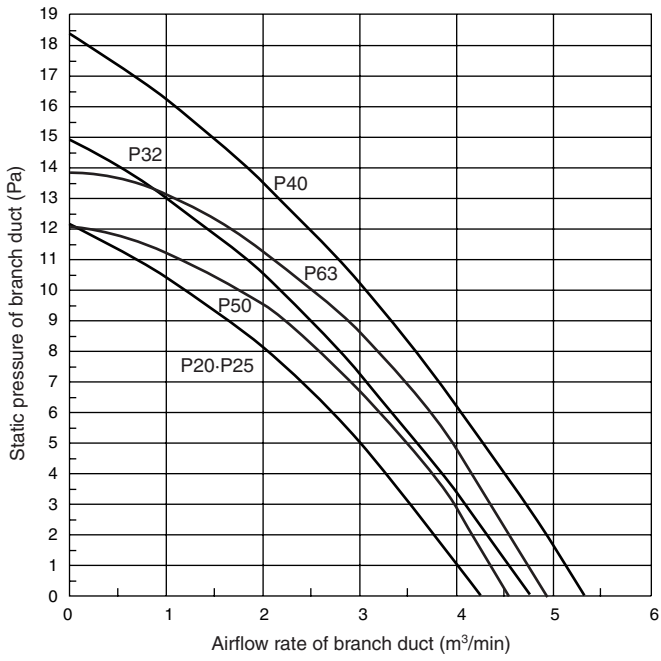
Please confirm that inlet-air temperature ( which is mixed with outdoor air ) is in the following operating temperature range.

-P-VLMD-E : Operating temperature range

Mode	Temperature range of inlet air
Cooling	15°C~24°C(Wet bulb)
Dry	
Heating	15°C~27°C(Dry bulb)

\*Relative humidity range is 30~80%.

### 3.4 Branch duct Intake-static pressure curve

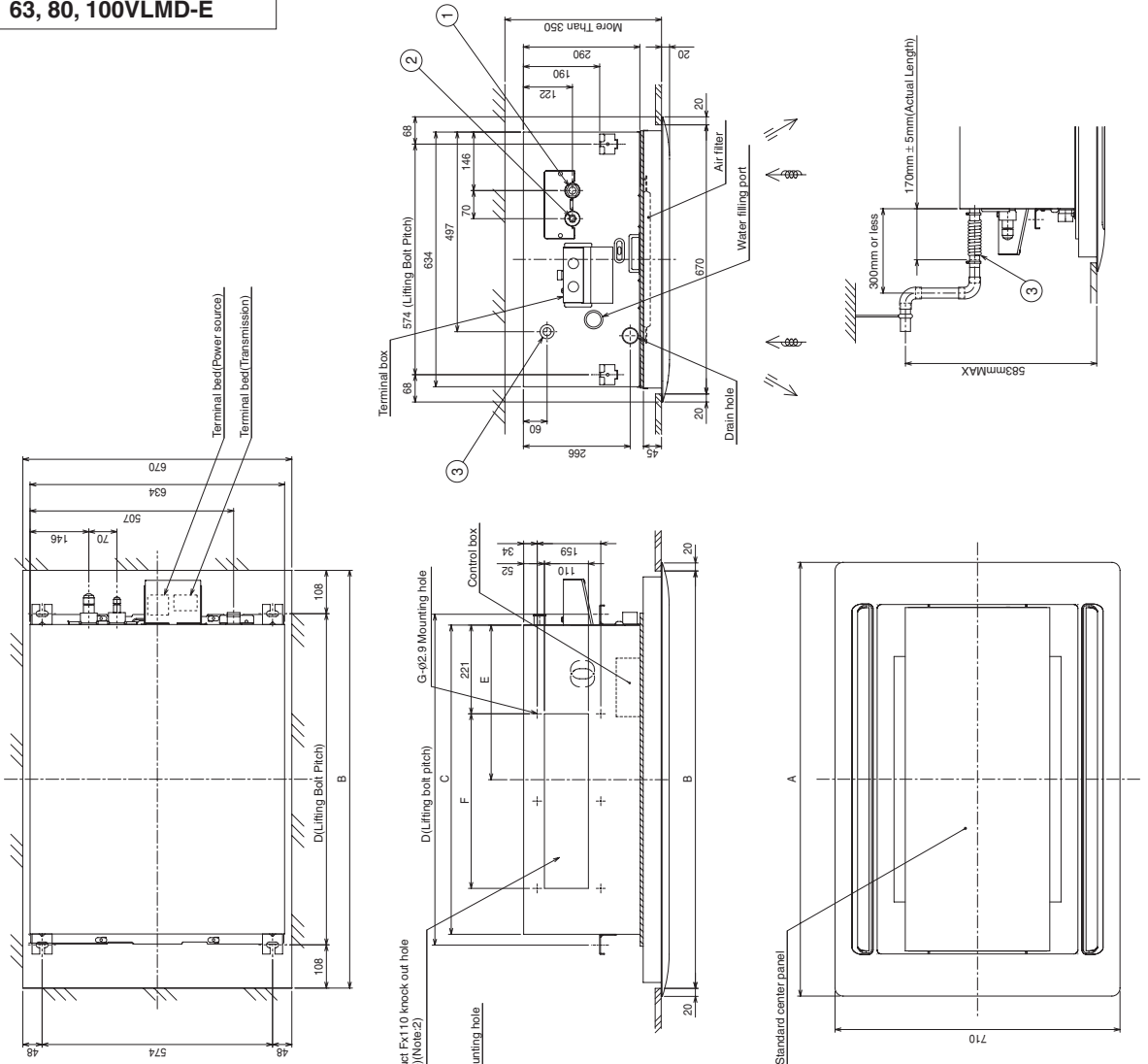




# 4. External Dimensions

**PLFY-P20, 25, 32, 40, 50, 63, 80, 100VLM-D-E**

Unit : mm



- Note: 1. Use M10 screw for the lifting bolt (field supply).  
 2. It is available to connect the branch duct on right and left side both.  
 3. On Model : 50, 100, you would use flare nut packed with the Indoor Unit, when connecting the Outdoor Unit for R407C, R22.  
 4. In order to increase the strength of the flare nut, the size of some of them has been increased.

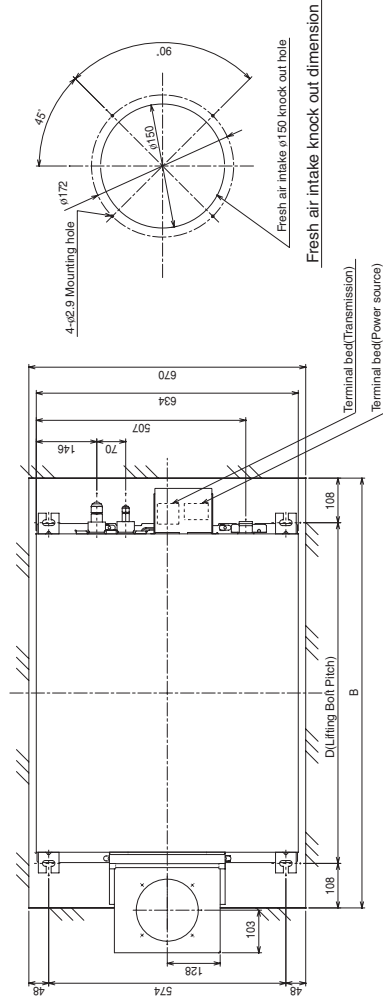
Model	<flare>	①	②	③
Model 20-25-32-40	Gas pipe:LP Liquid pipe:HP	ø12.7 ø6.35	.....	.....
Model 50	Gas pipe:LP Liquid pipe:HP	ø12.7<R410A outdoor unit> ø15.88<R407C,R22 outdoor unit> ø6.35<R410A outdoor unit> ø9.52<R407C,R22 outdoor unit>	.....	.....
Model 63-80	Gas pipe:LP Liquid pipe:HP	ø15.88 ø9.52	.....	.....
Model 100	Gas pipe:LP Liquid pipe:HP	ø15.88<R410A outdoor unit> ø19.05<R407C,R22 outdoor unit> ø9.52	.....	.....
Drain hose	VP-25-flexible joint> (accessory)	.....	.....	.....

Model	A	B	C	D	E	F	G	H (Liquid)	H (Gas)
PLFY-P20VLM-D-E	1080	1040	776	824	388	217.5X2 =435	6	17	27
PLFY-P25VLM-D-E									
PLFY-P32VLM-D-E									
PLFY-P40VLM-D-E									
PLFY-P50VLM-D-E	1250	1210	946	994	473			22	29
PLFY-P63VLM-D-E									
PLFY-P80VLM-D-E	1750	1710	1446	1494	723	188.5X4 =754	10	22	36
PLFY-P100VLM-D-E									

**PLFY-P-VLMD-E**

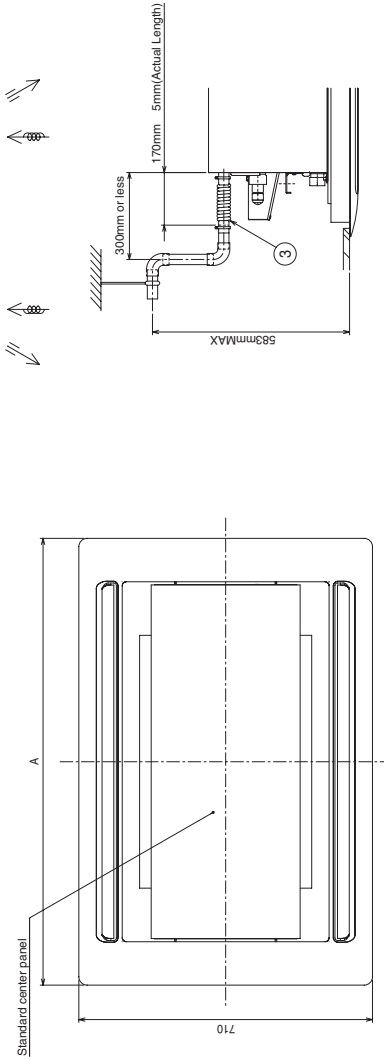
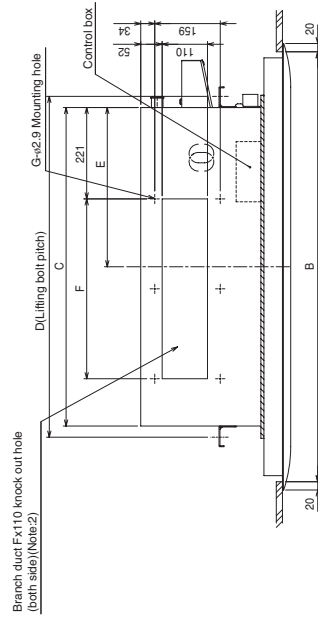
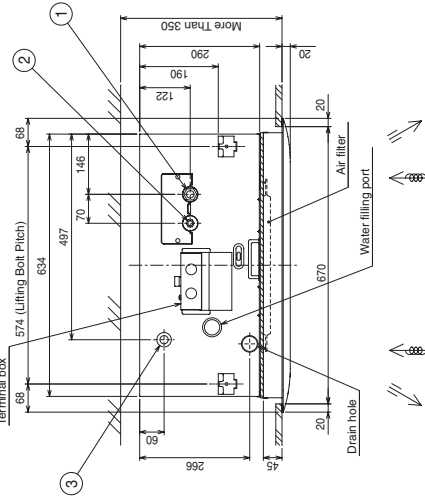
**PLFY-P20, 25, 32, 40, 50, 63, 80, 100VLMD-E with OA duct flange**

Unit : mm



Note: 1. Use M10 screw for the lifting bolt (field supply).  
 2. It is available to connect the branch duct on right and left side both.  
 3. On Model :50, 100, you would use flare nut packed with the Indoor Unit, when connecting the Outdoor Unit for R407C, R22.  
 4. In order to increase the strength of the flare nut, the size of some of them has been increased.

- |             |                                   |         |
|-------------|-----------------------------------|---------|
| Model       | Gas pipe:LP                       | ..... ① |
| 20:25:32:40 | Liquid pipe:HP                    | ..... ② |
| Model       | Gas pipe:LP                       | ..... ① |
| 50          | Liquid pipe:HP                    | ..... ② |
|             | <flare>                           | ..... ③ |
| Model       | Gas pipe:LP                       | ..... ① |
| 63:80       | Liquid pipe:HP                    | ..... ② |
| Model       | Gas pipe:LP                       | ..... ① |
| 100         | Liquid pipe:HP                    | ..... ② |
| Drain hose  | VP-25<flexible joint> (accessory) | ..... ③ |



Model	A	B	C	D	E	F	G	H(Liquid)	H(Gas)
PLFY-P20VLMD-E	1080	1040	776	824	388	217.5x2	6	17	27
PLFY-P25VLMD-E						=435			
PLFY-P32VLMD-E	1250	1210	946	994	473			22	29
PLFY-P40VLMD-E									
PLFY-P50VLMD-E	1750	1710	1446	1494	723	188.5x4	10	22	36
PLFY-P63VLMD-E						=754			
PLFY-P80VLMD-E									
PLFY-P100VLMD-E									

**PLFY-P125VLM-D-E**

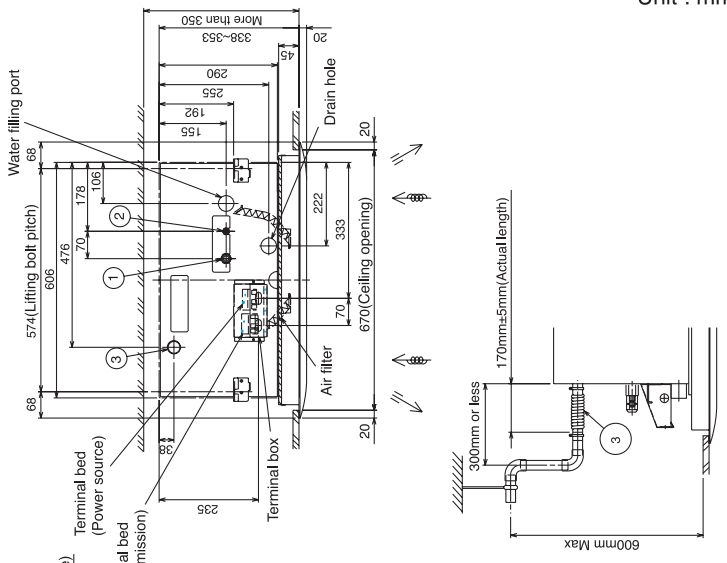
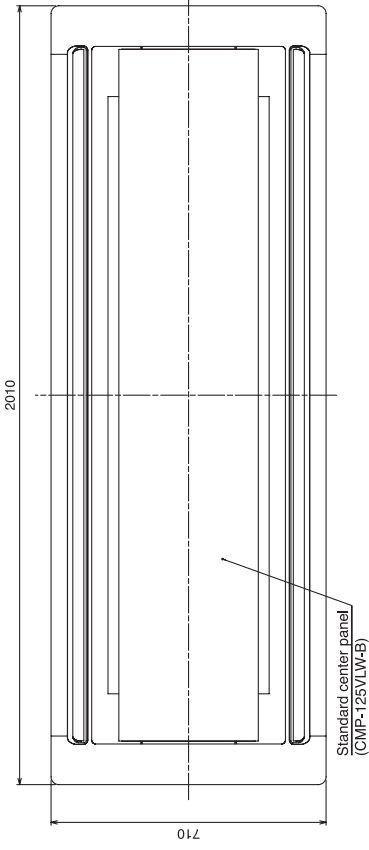
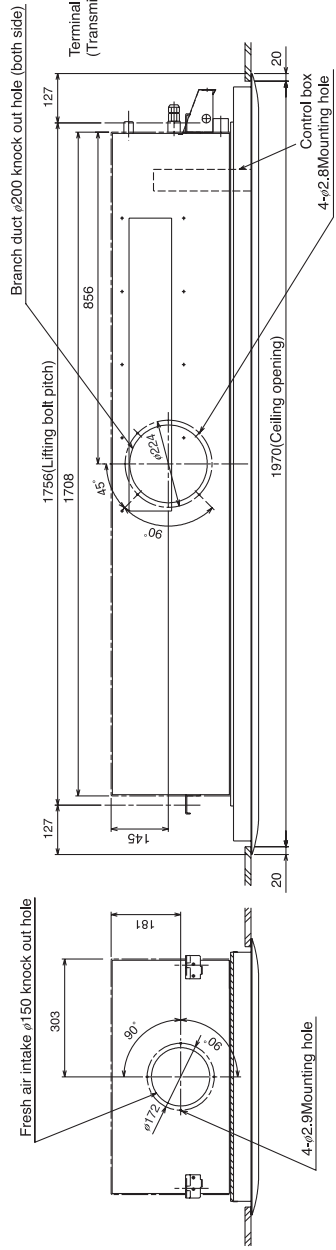
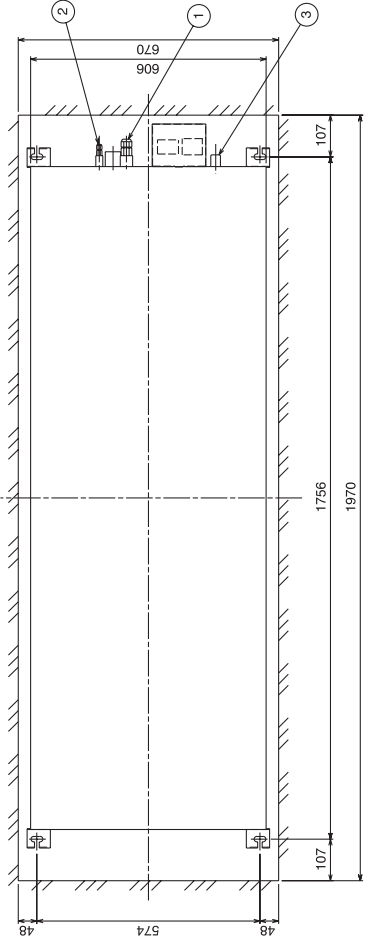
Unit : mm

- Note: 1. Use M10 screw for the lifting bolt (field supply).  
 2. On this model, you would use flare nut packed with the Indoor Unit, when connecting the Outdoor Unit for R407C, R22.  
 3. In order to increase the strength of the flare nut, the size of some of them has been increased.



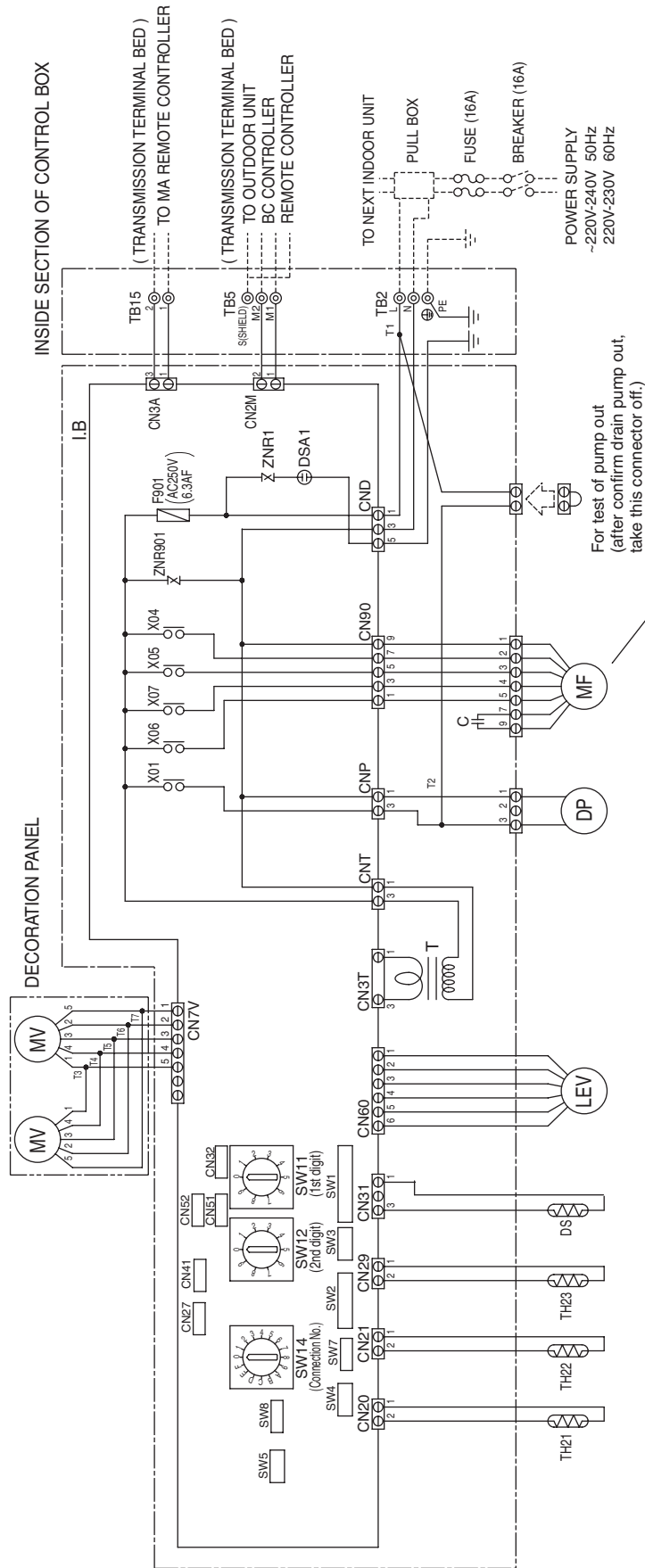
Model	A(Liquid)	A(Gas)
PLFY-P125VLM-D-E	22	36

- <flare>  
 Gas pipe: LP  $\phi$ 15.88<R410A outdoor unit> ..... ①  
 $\phi$ 19.05<R407C, R22 outdoor unit>  
 Liquid pipe: HP  $\phi$ 9.52 ..... ②  
 Drain hose VP-25<flexible joint> (accessory) ..... ③

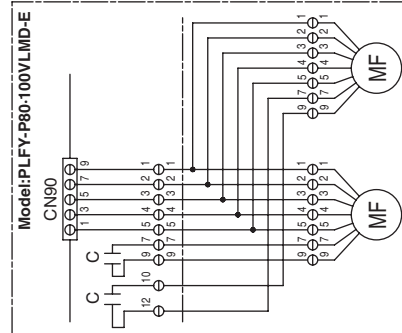


# 5. Electrical Wiring Diagram

## ● PLFY-P20,25,32,40,50,63,80VLM-D-E



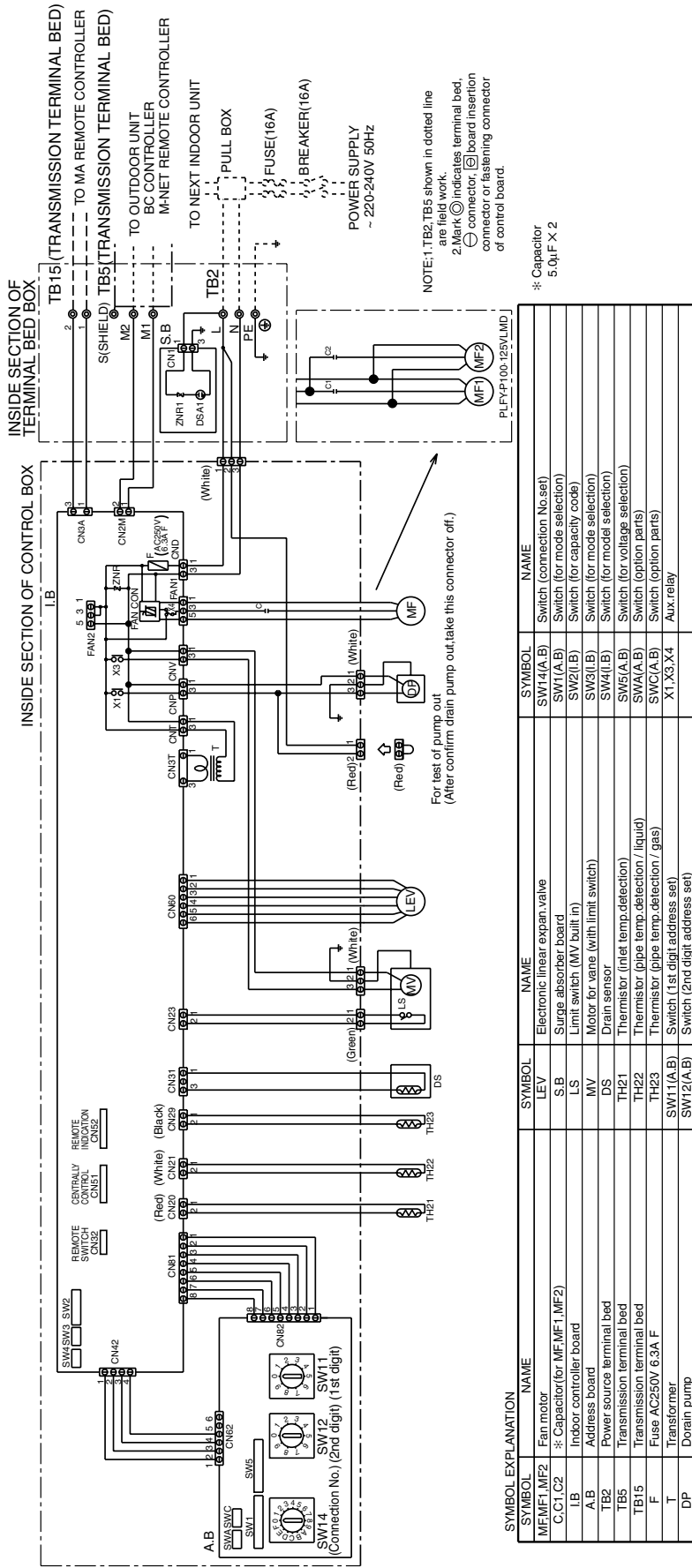
NOTE : 1. TB2, TB5, and TB15 shown in dotted line are field work.  
 2. Mark ⊙ indicates terminal bed, ⊖ connector, ⊞ board insertion connector or fastening connector of control board.



SYMBOL	NAME	SYMBOL	NAME	SYMBOL	NAME
MF	Fan motor	CN27	Connector (Damper)	SW11	Switch (1st digit address set)
C	Capacitor (for MF)	CN32	Connector (Centrally control)	SW12	Switch (2nd digit address set)
I.B	Indoor controller board	CN41	Connector (HA terminal-A)	SW14	Switch (connection No.set)
TB5	Power source terminal bed	CN51	Connector (Centrally control)	SW1	Switch (for mode selection 1)
TB2	Transmission terminal bed	CN52	Connector (Remote indication)	SW2	Switch (for capacity code)
TB15	MA Remote controller terminal bed	X04	Aux.relay (L notch:240V)	SW3	Switch (for model selection 2)
F901	Fuse (6.3A/6A)	X05	Aux.relay (M/L notch:240V/220-230V)	SW4	Switch (for model selection)
ZNR1, ZNR900	Varistor	X06	Aux.relay (H notch:220-230V)	SW5	Switch (for voltage selection)
T	Transformer	X07	Aux.relay (H/M notch:240V/220-230V)	SW7	Switch (for model selection)
DP	Drain pump	TH21	Thermistor (inlet temp.detection)	SW8	Switch (for mode selection 3)
LEV	Electronic linear expan.valve	TH22	Thermistor (pipe temp.detection/liquid)	T1-T7	Terminal
DS	Drain sensor	TH23	Thermistor (pipe temp.detection/gas)		
MV	Motor for vane				

SYMBOL EXPLANATION

● PLFY-P100,125VLM-D-E



SYMBOL EXPLANATION

SYMBOL	NAME	SYMBOL	NAME	SYMBOL	NAME
MF1, MF2	Fan motor	LEV	Electronic linear expan. valve	SW14(A,B)	Switch (connection No. set)
C, C1, C2	Capacitor (for MF, MF1, MF2)	S, B	Surge absorber board	SW1(A,B)	Switch (for mode selection)
LB	Indoor controller board	LS	Limit switch (MV built in)	SW2(L,B)	Switch (for capacity code)
AB	Address board	MV	Motor for vane (with limit switch)	SW3(L,B)	Switch (for mode selection)
TB2	Power source terminal bed	DS	Drain sensor	SW4(L,B)	Switch (for model selection)
TB5	Transmission terminal bed	TH21	Thermistor (inlet temp. detection)	SW5(A,B)	Switch (for voltage selection)
TB15	Transmission terminal bed	TH22	Thermistor (pipe temp. detection / liquid)	SWA(A,B)	Switch (option parts)
F	Fuse AC250V 6.3A F	TH23	Thermistor (pipe temp. detection / gas)	SWC(A,B)	Switch (option parts)
T	Transformer	SW11(A,B)	Switch (1st digit address set)	X1, X3, X4	Aux. relay
DP	Dorain pump	SW12(A,B)	Switch (2nd digit address set)		

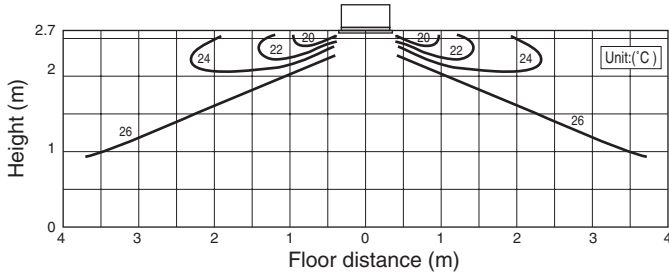
PLFY-P-VLMD-E

# 6. Temperature/Airflow distribution

## 6.1 Temperature distribution

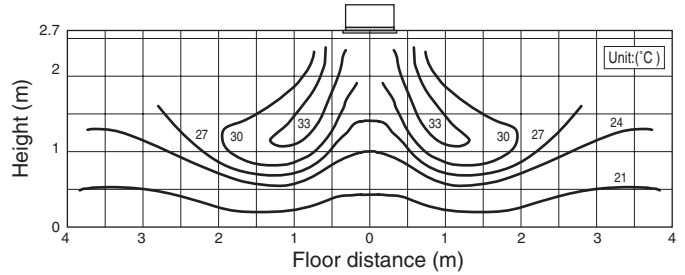
< Cooling mode >

Airflow angle : Horizontal Room temp.: 27°C Airflow rate : High



< Heating mode >

Airflow angle : Downward Room temp.: 20°C Airflow rate : High

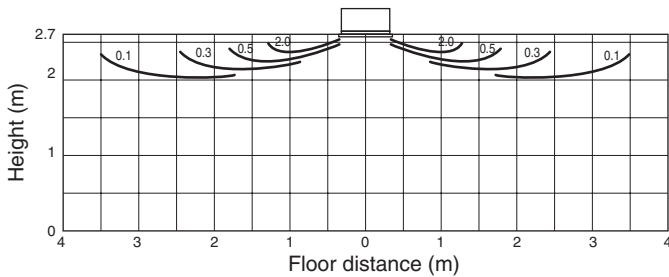


note : These figures show typical temperature distributions in the conditions above. In the actual installation, they may differ from these figures under the influence of air temperature conditions, ceiling height, cooling/heating load, obstacles, etc.

## 6.2 Airflow distribution

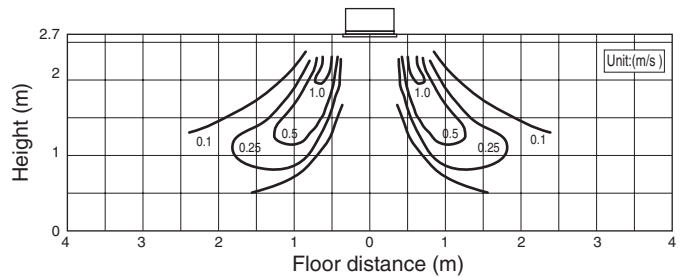
< Cooling mode >

Airflow angle : Horizontal Room temp.: 27°C Airflow rate : High



< Heating mode >

Airflow angle : Downward Room temp.: 20°C Airflow rate : High



note : These figures show typical temperature distributions in the conditions above. In the actual installation, they may differ from these figures under the influence of air temperature conditions, ceiling height, cooling/heating load, obstacles, etc.

# 7. Options

PLY-P-VLMD-E

Description	Model	Applicable capacity
Decoration panel	CMP-40VLW-B	P20/P25/P32/P40
	CMP-63VLW-B	P50/P63
	CMP-100VLW-B	P80/P100
	CMP-125VLW-B	P125
OA duct flange	PAC-KH11OF	P20/P25/P32/P40/P50/P63/P80/P100