

Cassette ceiling(2-way flow)

PLFY-P-VLMD-A

CONTENTS

1. Specifications ..... 368

2. Capacity Tables ..... 369

    2-1 Cooling capacity(Y-5HP) ..... 369

    2-2 Heating capacity(Y-5HP) ..... 371

    2-3 Cooling capacity(Y-8·10HP,R2-8·10HP) ..... 372

    2-4 Heating capacity(Y-8·10HP,R2-8·10HP) ..... 374

    2-5 Cooling capacity(Super Y) ..... 375

    2-6 Heating capacity(Super Y) ..... 377

    2-7 Cooling capacity(PQRY) ..... 378

    2-8 Heating capacity(PQRY) ..... 379

3. Sound Levels ..... 380

    3-1 Noise levels ..... 380

    3-2 N/C curves ..... 380

    3-3 OA Intake-static pressure curve ..... 381

    3-4 Branch duct Intake-static pressure curve ..... 381

4. External Dimensions ..... 382

5. Electrical Wiring Diagram ..... 384

6. Temperature/Airflow distribution ..... 385

7. Options ..... 386

PLFY-P-VLMD-A

# 1. Specifications

			PLFY-P20VLMD-A	PLFY-P25VLMD-A	PLFY-P32VLMD-A	PLFY-P40VLMD-A	PLFY-P50VLMD-A
Power source			~ 220-240V 50Hz				
Cooling capacity	* 1	kW	2.2	2.8	3.6	4.5	5.6
	* 2	kcal/h	2,000	2,500	3,150	4,000	5,000
Heating capacity	* 1	kW	2.5	3.2	4.0	5.0	6.3
Power consumption	Cooling	kW	0.09		0.10	0.16	
	Heating	kW	0.08		0.09	0.15	
Current	Cooling	A	0.43		0.48	0.77	
	Heating	A	0.38		0.43	0.71	
External finish(Munsel No.)			Unit : Galvanized steel plate Panel : 0.70Y8.59/0.97				
Dimension * 3	Height	mm	338 <8>				
	Width	mm	768 <1,060>			1,008 <1,300>	
	Depth	mm	606 <670>				
Net weight * 3		kg	24 <7>		25 <7>	33.5 <8>	35 <8>
Heat exchanger			Cross fin (Aluminum plate fin and copper tube)				
Fan	Type		Sirocco fanX 1			Sirocco fanX 2	
	Airflow rate (Lo-Mid2-Mid1-Hi)	m³/min	6.0-6.5-7.3-8.0		6.5-7.0-7.8-8.5	9.0-10.5-11.5-12.5	10.0-11.0-12.0-13.0
	External static pressure	Pa	0				
Motor	Type		Single phase induction motor				
	Output	kW	0.033			0.075	
Air filter			Synthetic fiber unwoven cloth filter (long life)				
Refrigerant pipe dimension	Gas (Flare)	mm	ø□12.7				ø□15.88
	Liquid (Flare)	mm	ø□6.35				ø□9.52
Drain pipe dimension			VP-25				
Noise level (Lo-Mid2-Mid1-Hi)		dB(A)	28-30-33-35		29-31-34-36	29-32-34-36	32-34-36-38

			PLFY-P63VLMD-A	PLFY-P80VLMD-A	PLFY-P100VLMD-A	PLFY-P125VLMD-A
Power source			~ 220-240V 50Hz			
Cooling capacity	* 1	kW	7.1	9.0	11.2	14.0
	* 2	kcal/h	6,300	8,000	10,000	12,500
Heating capacity	* 1	kW	8.0	10.0	12.5	16.0
Power consumption	Cooling	kW	0.22	0.23	0.25	0.28
	Heating	kW	0.21	0.22	0.24	0.27
Current	Cooling	A	1.05	1.10	1.20	1.35
	Heating	A	1.00	1.05	1.15	1.33
External finish(Munsel No.)			Unit : Galvanized steel plate Panel : 0.70V8.59/0.97			
Dimension * 3	Height	mm	338 <8>			
	Width	mm	1,358 <1,650>		1,708 <2,000>	
	Depth	mm	606 <670>			
Net weight * 3		kg	39 <10>		56 <11.5>	
Heat exchanger			Cross fin (Aluminum plate fin and copper tube)			
Fan	Type		Sirocco fanX 2		Sirocco fanX 4	
	Airflow rate (Lo-Mid2-Mid1-Hi)	m³/min	13.0-14.0-16.0-18.0	15.0-17.0-19.0-21.0	21.0-23.0-26.0-29.0	24.0-27.0-30.0-33.0
	External static pressure	Pa	0			
Motor	Type		Single phase induction motor			
	Output	kW	0.078		0.078X 2	
Air filter			Synthetic fiber unwoven cloth filter (long life)			
Refrigerant pipe dimension	Gas (Flare)	mm	□ 15.88		ø□19.05	
	Liquid (Flare)	mm	ø□9.52			
Drain pipe dimension			VP-25			
Noise level (Lo-Mid2-Mid1-Hi)		dB(A)	32-34-37-39	36-38-41-43	37-39-41-43	40-42-44-46

Note: \* 1 Cooling/Heating capacity indicates the maximum value at operation under the following condition.  
Cooling : Indoor 27°CDB/19°CWB, Outdoor 35°CDB  
Heating : Indoor 20°CDB, Outdoor 7°CDB/6°CWB  
\* 2 Cooling capacity indicates the maximum value at operation under the following condition.  
Cooling : Indoor 27°CDB/19.5°CWB, Outdoor 35°CDB (WR2: water 30°C)  
\* 3 The figure in < > indicates panel's

PLFY-P-VLMD-A

## 2. Capacity tables

### 2-1.Cooling Capacity (In combination with PUMY-125YM(A))

#### PLFY-P-VLMD-A

CA:Capacity(kW)  
SHC:Sensible heat Capacity(kW)

Unit size	Outdoor air temp.	Indoor air temp.							
		23°CDB 16°CWB		25°CDB 18°CWB		28°CDB 20°CWB		30°CDB 22°CWB	
		CA	SHC	CA	SHC	CA	SHC	CA	SHC
20 (2.2)	20.0	2.2	1.8	2.3	1.8	2.4	1.8	2.6	1.9
	22.5	2.1	1.7	2.3	1.8	2.4	1.8	2.6	1.9
	25.0	2.1	1.7	2.3	1.8	2.4	1.8	2.5	1.9
	27.5	2.1	1.7	2.2	1.8	2.4	1.8	2.5	1.9
	30.0	2.1	1.7	2.2	1.8	2.3	1.8	2.5	1.9
	32.5	2.0	1.7	2.2	1.8	2.3	1.8	2.5	1.8
	35.0	2.0	1.7	2.1	1.8	2.3	1.8	2.4	1.8
	37.5	2.0	1.7	2.1	1.8	2.2	1.7	2.4	1.8
	40.0	2.0	1.7	2.1	1.8	2.2	1.7	2.4	1.8
46.0	1.9	1.6	2.0	1.7	2.1	1.7	2.3	1.8	
25 (2.8)	20.0	2.8	2.1	2.9	2.1	3.1	2.1	3.3	2.2
	22.5	2.7	2.0	2.9	2.1	3.1	2.1	3.2	2.2
	25.0	2.7	2.0	2.9	2.1	3.1	2.1	3.2	2.2
	27.5	2.7	2.0	2.8	2.1	3.0	2.1	3.2	2.1
	30.0	2.6	2.0	2.8	2.1	3.0	2.1	3.2	2.1
	32.5	2.6	2.0	2.8	2.1	2.9	2.0	3.1	2.1
	35.0	2.6	1.9	2.7	2.0	2.9	2.0	3.1	2.1
	37.5	2.5	1.9	2.7	2.0	2.9	2.0	3.0	2.1
	40.0	2.5	1.9	2.7	2.0	2.8	2.0	3.0	2.1
46.0	2.4	1.9	2.6	2.0	2.7	1.9	2.9	2.0	
32 (3.6)	20.0	3.6	2.5	3.7	2.6	4.0	2.6	4.2	2.7
	22.5	3.5	2.5	3.7	2.6	4.0	2.6	4.2	2.7
	25.0	3.5	2.5	3.7	2.6	3.9	2.6	4.1	2.7
	27.5	3.4	2.5	3.6	2.6	3.9	2.6	4.1	2.6
	30.0	3.4	2.4	3.6	2.6	3.8	2.5	4.1	2.6
	32.5	3.3	2.4	3.6	2.5	3.8	2.5	4.0	2.6
	35.0	3.3	2.4	3.5	2.5	3.7	2.5	4.0	2.6
	37.5	3.2	2.4	3.5	2.5	3.7	2.5	3.9	2.6
	40.0	3.2	2.4	3.4	2.5	3.6	2.5	3.9	2.5
46.0	3.1	2.3	3.3	2.4	3.5	2.4	3.7	2.5	
40 (4.5)	20.0	4.5	3.2	4.7	3.4	5.0	3.3	5.3	3.4
	22.5	4.4	3.2	4.6	3.3	5.0	3.3	5.2	3.4
	25.0	4.3	3.2	4.6	3.3	4.9	3.3	5.2	3.4
	27.5	4.3	3.1	4.6	3.3	4.9	3.3	5.1	3.4
	30.0	4.2	3.1	4.5	3.3	4.8	3.2	5.1	3.3
	32.5	4.2	3.1	4.4	3.2	4.7	3.2	5.0	3.3
	35.0	4.1	3.1	4.4	3.2	4.7	3.2	5.0	3.3
	37.5	4.1	3.0	4.3	3.2	4.6	3.2	4.9	3.3
	40.0	4.0	3.0	4.3	3.2	4.5	3.1	4.8	3.2
46.0	3.8	2.9	4.1	3.1	4.3	3.0	4.6	3.2	
50 (5.6)	20.0	5.5	4.0	5.8	4.1	6.2	4.1	6.6	4.2
	22.5	5.5	3.9	5.8	4.1	6.2	4.1	6.5	4.2
	25.0	5.4	3.9	5.7	4.1	6.1	4.1	6.4	4.2
	27.5	5.3	3.9	5.7	4.1	6.0	4.0	6.4	4.1
	30.0	5.3	3.8	5.6	4.0	5.9	4.0	6.3	4.1
	32.5	5.2	3.8	5.5	4.0	5.9	3.9	6.2	4.1
	35.0	5.1	3.7	5.5	3.9	5.8	3.9	6.2	4.0
	37.5	5.0	3.7	5.4	3.9	5.7	3.9	6.1	4.0
	40.0	5.0	3.7	5.3	3.9	5.6	3.8	6.0	4.0
46.0	4.8	3.6	5.1	3.8	5.4	3.7	5.8	3.9	
63 (7.1)	20.0	7.0	5.1	7.4	5.3	7.9	5.3	8.3	5.4
	22.5	6.9	5.0	7.3	5.2	7.8	5.2	8.2	5.4
	25.0	6.9	5.0	7.3	5.2	7.7	5.2	8.2	5.3
	27.5	6.8	4.9	7.2	5.2	7.7	5.1	8.1	5.3
	30.0	6.7	4.9	7.1	5.1	7.5	5.1	8.0	5.3
	32.5	6.6	4.8	7.0	5.1	7.5	5.1	7.9	5.2
	35.0	6.5	4.8	6.9	5.0	7.3	5.0	7.8	5.2
	37.5	6.4	4.7	6.8	5.0	7.2	5.0	7.7	5.1
	40.0	6.3	4.7	6.7	5.0	7.2	4.9	7.6	5.1
46.0	6.1	4.6	6.5	4.8	6.9	4.8	7.3	5.0	

PLFY-P-VLMD-A

### Cooling Capacity (In combination with PUMY-125YM(A))

#### PLFY-P-VLMD-A

CA:Capacity(kW)

SHC:Sensible heat Capacity(kW)

Unit size	Outdoor air temp.	Indoor air temp.							
		23°CDB 16°CWB		25°CDB 18°CWB		28°CDB 20°CWB		30°CDB 22°CWB	
		°CDB	CA	SHC	CA	SHC	CA	SHC	CA
80 (9.0)	20.0	8.9	6.3	9.4	6.6	10.0	6.6	10.6	6.7
	22.5	8.8	6.3	9.3	6.6	9.9	6.5	10.4	6.7
	25.0	8.7	6.2	9.2	6.5	9.8	6.5	10.4	6.7
	27.5	8.6	6.2	9.1	6.5	9.7	6.4	10.3	6.6
	30.0	8.5	6.1	9.0	6.4	9.5	6.4	10.2	6.6
	32.5	8.3	6.0	8.9	6.4	9.5	6.3	10.0	6.5
	35.0	8.2	6.0	8.8	6.3	9.3	6.2	9.9	6.5
	37.5	8.1	5.9	8.6	6.2	9.2	6.2	9.8	6.4
	40.0	8.0	5.9	8.6	6.2	9.1	6.1	9.6	6.3
46.0	7.7	5.7	8.2	6.0	8.7	6.0	9.3	6.2	
100 (11.2)	20.0	11.1	8.3	11.6	8.6	12.5	8.6	13.1	8.8
	22.5	10.9	8.2	11.5	8.6	12.3	8.5	13.0	8.8
	25.0	10.8	8.1	11.5	8.5	12.2	8.5	12.9	8.7
	27.5	10.7	8.1	11.3	8.5	12.1	8.4	12.8	8.7
	30.0	10.5	8.0	11.2	8.4	11.9	8.3	12.6	8.6
	32.5	10.4	7.9	11.1	8.3	11.8	8.3	12.5	8.5
	35.0	10.2	7.8	10.9	8.3	11.6	8.2	12.3	8.5
	37.5	10.1	7.8	10.8	8.2	11.4	8.1	12.2	8.4
	40.0	10.0	7.7	10.6	8.1	11.3	8.1	12.0	8.3
46.0	9.6	7.5	10.2	7.9	10.8	7.8	11.5	8.1	
125 (14.0)	20.0	13.9	10.1	14.6	10.5	15.6	10.5	16.4	10.8
	22.5	13.7	10.0	14.4	10.5	15.4	10.4	16.2	10.7
	25.0	13.5	10.0	14.3	10.4	15.3	10.3	16.1	10.6
	27.5	13.4	9.9	14.2	10.3	15.1	10.3	16.0	10.6
	30.0	13.2	9.8	14.0	10.3	14.9	10.2	15.8	10.5
	32.5	13.0	9.7	13.8	10.2	14.7	10.1	15.6	10.4
	35.0	12.8	9.6	13.7	10.1	14.5	10.0	15.4	10.3
	37.5	12.6	9.5	13.4	10.0	14.3	9.9	15.2	10.3
	40.0	12.5	9.4	13.3	9.9	14.1	9.8	15.0	10.2
46.0	12.0	9.2	12.8	9.7	13.5	9.6	14.4	9.9	

PLFY-P-VLMD-A

2-2.Heating Capacity (In combination with PUMY-125YM(A))

PLFY-P-VLMD-A

Unit size	Outdoor air temp. °CWB	Indoor air temp.: °CDB		
		15.0	20.0	25.0
		SHC	SHC	SHC
20	-12.0	1.6	1.6	1.5
	-10.0	1.7	1.6	1.6
	-5.0	1.9	1.9	1.9
	0.0	2.2	2.1	2.1
	2.5	2.3	2.3	2.3
	6.0	2.5	2.5	2.5
	7.5	2.6	2.6	2.5
	10.0	2.8	2.7	2.5
	12.5	2.9	2.8	2.5
15.5	3.1	2.8	2.5	
25	-12.0	2.0	2.0	2.0
	-10.0	2.1	2.1	2.1
	-5.0	2.4	2.4	2.4
	0.0	2.8	2.8	2.7
	2.5	3.0	2.9	2.9
	6.0	3.2	3.2	3.2
	7.5	3.3	3.3	3.2
	10.0	3.5	3.5	3.2
	12.5	3.7	3.5	3.2
15.5	3.9	3.5	3.2	
32	-12.0	2.5	2.5	2.5
	-10.0	2.7	2.6	2.6
	-5.0	3.1	3.0	3.0
	0.0	3.5	3.4	3.4
	2.5	3.7	3.7	3.6
	6.0	4.0	4.0	3.9
	7.5	4.2	4.1	4.0
	10.0	4.4	4.4	4.0
	12.5	4.7	4.4	4.0
15.5	4.9	4.4	4.0	
40	-12.0	3.2	3.1	3.1
	-10.0	3.4	3.3	3.2
	-5.0	3.8	3.8	3.7
	0.0	4.3	4.3	4.2
	2.5	4.6	4.6	4.5
	6.0	5.0	5.0	4.9
	7.5	5.2	5.2	5.0
	10.0	5.5	5.5	5.0
	12.5	5.9	5.5	5.0
15.5	6.2	5.5	5.0	
50	-12.0	4.0	3.9	3.9
	-10.0	4.2	4.2	4.1
	-5.0	4.8	4.8	4.7
	0.0	5.5	5.4	5.3
	2.5	5.8	5.8	5.7
	6.0	6.3	6.3	6.2
	7.5	6.6	6.5	6.2
	10.0	7.0	6.9	6.2
	12.5	7.4	7.0	6.2
15.5	7.7	7.0	6.2	

SHC:Sensible heat Capacity(kW)

Unit size	Outdoor air temp. °CWB	Indoor air temp.: °CDB		
		15.0	20.0	25.0
		SHC	SHC	SHC
63	-12.0	5.1	5.0	4.9
	-10.0	5.4	5.3	5.2
	-5.0	6.1	6.0	5.9
	0.0	6.9	6.9	6.8
	2.5	7.4	7.3	7.2
	6.0	8.0	8.0	7.9
	7.5	8.3	8.3	7.9
	10.0	8.8	8.8	7.9
	12.5	9.4	8.8	7.9
15.5	9.8	8.8	7.9	
80	-12.0	6.4	6.2	6.1
	-10.0	6.7	6.6	6.5
	-5.0	7.6	7.5	7.4
	0.0	8.7	8.6	8.5
	2.5	9.2	9.2	9.0
	6.0	10.1	10.0	9.9
	7.5	10.4	10.4	9.9
	10.0	11.1	11.0	9.9
	12.5	11.7	11.0	9.9
15.5	12.3	11.0	9.9	
100	-12.0	8.0	7.8	7.7
	-10.0	8.4	8.2	8.1
	-5.0	9.6	9.4	9.3
	0.0	10.9	10.7	10.6
	2.5	11.5	11.4	11.3
	6.0	12.6	12.5	12.3
	7.5	13.0	12.9	12.4
	10.0	13.8	13.7	12.4
	12.5	14.6	13.8	12.4
15.5	15.4	13.8	12.4	
125	-12.0	10.2	10.0	9.8
	-10.0	10.7	10.6	10.4
	-5.0	12.2	12.1	11.9
	0.0	13.9	13.8	13.6
	2.5	14.8	14.7	14.5
	6.0	16.1	16.0	15.8
	7.5	16.7	16.6	15.8
	10.0	17.7	17.6	15.8
	12.5	18.7	17.7	15.8
15.5	19.7	17.7	15.8	

PLFY-P-VLMD-A

## 2-3.Cooling Capacity (In combination with PU(H)Y,PURY-(P)200-250YMF-C)

CA:Capacity(kW)

SHC:Sensible heat Capacity(kW)

### PLFY-P-VLMD-A

Unit size	Outdoor air temp.	Indoor air temp.													
		21.5°CDB 15°CWB		23°CDB 16°CWB		25°CDB 18°CWB		27°CDB 19°CWB		28°CDB 20°CWB		30°CDB 22°CWB		32°CDB 24°CWB	
		°CDB	CA	SHC	CA	SHC	CA	SHC	CA	SHC	CA	SHC	CA	SHC	CA
20 (2.2)	20.0	2.2	1.8	2.2	1.8	2.3	1.8	2.3	1.8	2.4	1.9	2.5	1.8	2.6	1.8
	22.5	2.1	1.7	2.2	1.8	2.3	1.8	2.3	1.8	2.4	1.8	2.4	1.8	2.5	1.8
	25.0	2.1	1.7	2.2	1.8	2.2	1.7	2.3	1.8	2.3	1.8	2.4	1.8	2.5	1.8
	27.5	2.1	1.7	2.1	1.8	2.2	1.7	2.3	1.8	2.3	1.8	2.4	1.8	2.5	1.7
	30.0	2.1	1.7	2.1	1.8	2.2	1.7	2.2	1.8	2.3	1.8	2.4	1.8	2.5	1.7
	32.5	2.0	1.7	2.1	1.8	2.2	1.7	2.2	1.7	2.3	1.8	2.4	1.8	2.4	1.7
	35.0	2.0	1.7	2.1	1.7	2.2	1.7	2.2	1.7	2.2	1.8	2.3	1.8	2.4	1.7
	37.5	2.0	1.7	2.0	1.7	2.1	1.7	2.2	1.7	2.2	1.8	2.3	1.8	2.4	1.7
	40.0	2.0	1.7	2.0	1.7	2.1	1.7	2.2	1.7	2.2	1.8	2.3	1.7	2.4	1.7
43.0	2.0	1.7	2.0	1.7	2.1	1.7	2.1	1.7	2.2	1.8	2.3	1.7	2.3	1.7	
25 (2.8)	20.0	2.7	2.0	2.8	2.1	2.9	2.0	3.0	2.1	3.0	2.1	3.1	2.1	3.2	2.0
	22.5	2.7	2.0	2.8	2.1	2.9	2.0	2.9	2.0	3.0	2.1	3.1	2.0	3.2	2.0
	25.0	2.7	2.0	2.7	2.1	2.9	2.0	2.9	2.0	3.0	2.1	3.1	2.0	3.2	2.0
	27.5	2.7	2.0	2.7	2.0	2.8	2.0	2.9	2.0	2.9	2.1	3.1	2.0	3.2	2.0
	30.0	2.6	2.0	2.7	2.0	2.8	2.0	2.9	2.0	2.9	2.1	3.0	2.0	3.1	2.0
	32.5	2.6	2.0	2.7	2.0	2.8	2.0	2.8	2.0	2.9	2.1	3.0	2.0	3.1	2.0
	35.0	2.6	2.0	2.6	2.0	2.7	2.0	2.8	2.0	2.9	2.0	3.0	2.0	3.1	1.9
	37.5	2.5	1.9	2.6	2.0	2.7	1.9	2.8	2.0	2.8	2.0	2.9	2.0	3.1	1.9
	40.0	2.5	1.9	2.6	2.0	2.7	1.9	2.7	2.0	2.8	2.0	2.9	2.0	3.0	1.9
43.0	2.5	1.9	2.5	2.0	2.7	1.9	2.7	1.9	2.8	2.0	2.9	2.0	3.0	1.9	
32 (3.6)	20.0	3.5	2.5	3.6	2.6	3.7	2.5	3.8	2.5	3.9	2.6	4.0	2.5	4.2	2.4
	22.5	3.5	2.5	3.6	2.5	3.7	2.5	3.8	2.5	3.9	2.6	4.0	2.5	4.1	2.4
	25.0	3.5	2.5	3.5	2.5	3.7	2.5	3.7	2.5	3.8	2.6	4.0	2.5	4.1	2.4
	27.5	3.4	2.5	3.5	2.5	3.6	2.5	3.7	2.5	3.8	2.5	3.9	2.5	4.1	2.4
	30.0	3.4	2.4	3.5	2.5	3.6	2.4	3.7	2.5	3.7	2.5	3.9	2.5	4.0	2.4
	32.5	3.3	2.4	3.4	2.5	3.6	2.4	3.6	2.4	3.7	2.5	3.9	2.4	4.0	2.4
	35.0	3.3	2.4	3.4	2.5	3.5	2.4	3.6	2.4	3.7	2.5	3.8	2.4	4.0	2.4
	37.5	3.3	2.4	3.3	2.4	3.5	2.4	3.6	2.4	3.6	2.5	3.8	2.4	3.9	2.4
	40.0	3.2	2.4	3.3	2.4	3.5	2.4	3.5	2.4	3.6	2.5	3.7	2.4	3.9	2.3
43.0	3.2	2.4	3.3	2.4	3.4	2.4	3.5	2.4	3.6	2.4	3.7	2.4	3.8	2.3	
40 (4.5)	20.0	4.4	3.2	4.5	3.3	4.7	3.2	4.8	3.2	4.9	3.3	5.0	3.2	5.2	3.1
	22.5	4.4	3.2	4.5	3.2	4.6	3.2	4.7	3.2	4.8	3.3	5.0	3.2	5.2	3.1
	25.0	4.3	3.2	4.4	3.2	4.6	3.2	4.7	3.2	4.8	3.3	5.0	3.2	5.1	3.1
	27.5	4.3	3.1	4.4	3.2	4.5	3.1	4.6	3.2	4.7	3.3	4.9	3.2	5.1	3.1
	30.0	4.2	3.1	4.3	3.2	4.5	3.1	4.6	3.1	4.7	3.2	4.9	3.2	5.0	3.1
	32.5	4.2	3.1	4.3	3.2	4.5	3.1	4.5	3.1	4.6	3.2	4.8	3.1	5.0	3.0
	35.0	4.1	3.1	4.2	3.1	4.4	3.1	4.5	3.1	4.6	3.2	4.8	3.1	5.0	3.0
	37.5	4.1	3.0	4.2	3.1	4.4	3.1	4.5	3.1	4.5	3.2	4.7	3.1	4.9	3.0
	40.0	4.1	3.0	4.1	3.1	4.3	3.0	4.4	3.1	4.5	3.2	4.7	3.1	4.9	3.0
43.0	4.0	3.0	4.1	3.1	4.3	3.0	4.4	3.0	4.4	3.1	4.6	3.1	4.8	3.0	
50 (5.6)	20.0	5.5	3.9	5.6	4.0	5.8	3.9	5.9	3.9	6.0	4.1	6.3	3.9	6.5	3.8
	22.5	5.4	3.9	5.5	4.0	5.8	3.9	5.9	3.9	6.0	4.0	6.2	3.9	6.4	3.8
	25.0	5.4	3.9	5.5	4.0	5.7	3.9	5.8	3.9	5.9	4.0	6.2	3.9	6.4	3.8
	27.5	5.3	3.9	5.4	3.9	5.7	3.8	5.8	3.9	5.9	4.0	6.1	3.9	6.3	3.8
	30.0	5.3	3.8	5.4	3.9	5.6	3.8	5.7	3.8	5.8	4.0	6.0	3.9	6.3	3.7
	32.5	5.2	3.8	5.3	3.9	5.5	3.8	5.7	3.8	5.8	3.9	6.0	3.8	6.2	3.7
	35.0	5.2	3.8	5.3	3.9	5.5	3.8	5.6	3.8	5.7	3.9	5.9	3.8	6.2	3.7
	37.5	5.1	3.7	5.2	3.8	5.4	3.7	5.5	3.8	5.7	3.9	5.9	3.8	6.1	3.7
	40.0	5.0	3.7	5.2	3.8	5.4	3.7	5.5	3.7	5.6	3.9	5.8	3.8	6.0	3.7
43.0	5.0	3.7	5.1	3.8	5.3	3.7	5.4	3.7	5.5	3.8	5.8	3.7	6.0	3.6	
63 (7.1)	20.0	7.0	5.0	7.1	5.1	7.4	5.0	7.5	5.0	7.7	5.2	8.0	5.1	8.2	4.9
	22.5	6.9	5.0	7.0	5.1	7.3	5.0	7.5	5.0	7.6	5.2	7.9	5.0	8.2	4.9
	25.0	6.8	5.0	7.0	5.1	7.2	5.0	7.4	5.0	7.5	5.1	7.8	5.0	8.1	4.9
	27.5	6.7	4.9	6.9	5.0	7.2	4.9	7.3	5.0	7.5	5.1	7.7	5.0	8.0	4.8
	30.0	6.7	4.9	6.8	5.0	7.1	4.9	7.2	4.9	7.4	5.1	7.7	4.9	8.0	4.8
	32.5	6.6	4.9	6.7	5.0	7.0	4.9	7.2	4.9	7.3	5.0	7.6	4.9	7.9	4.8
	35.0	6.5	4.8	6.7	4.9	7.0	4.8	7.1	4.9	7.2	5.0	7.5	4.9	7.8	4.8
	37.5	6.5	4.8	6.6	4.9	6.9	4.8	7.0	4.8	7.2	5.0	7.5	4.9	7.7	4.7
	40.0	6.4	4.7	6.5	4.9	6.8	4.8	7.0	4.8	7.1	5.0	7.4	4.8	7.7	4.7
43.0	6.3	4.7	6.4	4.8	6.7	4.7	6.9	4.8	7.0	4.9	7.3	4.8	7.6	4.7	

PLFY-P-VLMD-A

**Cooling Capacity (In combination with PU(H)Y,PURY-(P)200-250YMF-C)**

**PLFY-P-VLMD-A**

CA:Capacity(kW)

SHC:Sensible heat Capacity(kW)

Unit size	Outdoor air temp.	Indoor air temp.														
		21.5°CDB 15°CWB			23°CDB 16°CWB		25°CDB 18°CWB		27°CDB 19°CWB		28°CDB 20°CWB		30°CDB 22°CWB		32°CDB 24°CWB	
		CDB	CA	SHC	CA	SHC	CA	SHC	CA	SHC	CA	SHC	CA	SHC	CA	SHC
80 (9.0)	20.0	8.8	6.3	9.0	6.4	9.4	6.3	9.5	6.3	9.7	6.5	10.1	6.3	10.4	6.1	
	22.5	8.7	6.3	8.9	6.4	9.3	6.2	9.5	6.3	9.6	6.4	10.0	6.3	10.4	6.1	
	25.0	8.6	6.2	8.8	6.3	9.2	6.2	9.4	6.2	9.5	6.4	9.9	6.2	10.3	6.0	
	27.5	8.6	6.2	8.7	6.3	9.1	6.1	9.3	6.2	9.5	6.4	9.8	6.2	10.2	6.0	
	30.0	8.5	6.1	8.6	6.2	9.0	6.1	9.2	6.1	9.4	6.3	9.7	6.2	10.1	6.0	
	32.5	8.4	6.1	8.6	6.2	8.9	6.1	9.1	6.1	9.3	6.3	9.6	6.1	10.0	5.9	
	35.0	8.3	6.0	8.5	6.2	8.8	6.0	9.0	6.1	9.2	6.2	9.5	6.1	9.9	5.9	
	37.5	8.2	6.0	8.4	6.1	8.7	6.0	8.9	6.0	9.1	6.2	9.5	6.1	9.8	5.9	
	40.0	8.1	5.9	8.3	6.1	8.6	5.9	8.8	6.0	9.0	6.2	9.4	6.0	9.7	5.9	
43.0	8.0	5.9	8.2	6.0	8.5	5.9	8.7	5.9	8.9	6.1	9.3	6.0	9.6	5.8		
100 (11.2)	20.0	11.0	8.2	11.2	8.4	11.6	8.2	11.9	8.3	12.1	8.5	12.5	8.3	13.0	8.1	
	22.5	10.9	8.2	11.1	8.3	11.5	8.2	11.8	8.2	12.0	8.5	12.4	8.3	12.9	8.1	
	25.0	10.8	8.1	11.0	8.3	11.4	8.1	11.6	8.2	11.9	8.5	12.3	8.2	12.8	8.0	
	27.5	10.6	8.0	10.9	8.2	11.3	8.1	11.5	8.1	11.8	8.4	12.2	8.2	12.7	8.0	
	30.0	10.5	8.0	10.8	8.2	11.2	8.0	11.4	8.1	11.6	8.4	12.1	8.2	12.5	7.9	
	32.5	10.4	7.9	10.6	8.1	11.1	8.0	11.3	8.0	11.5	8.3	12.0	8.1	12.4	7.9	
	35.0	10.3	7.9	10.5	8.1	11.0	7.9	11.2	8.0	11.4	8.3	11.9	8.1	12.3	7.9	
	37.5	10.2	7.8	10.4	8.0	10.9	7.9	11.1	8.0	11.3	8.2	11.8	8.0	12.2	7.8	
	40.0	10.1	7.8	10.3	8.0	10.8	7.8	11.0	7.9	11.2	8.2	11.6	8.0	12.1	7.8	
43.0	9.9	7.7	10.2	7.9	10.6	7.8	10.8	7.9	11.1	8.1	11.5	7.9	12.0	7.7		
125 (14.0)	20.0	13.7	10.1	14.0	10.3	14.6	10.0	14.8	10.1	15.1	10.4	15.7	10.1	16.2	9.8	
	22.5	13.6	10.0	13.9	10.2	14.4	10.0	14.7	10.0	15.0	10.3	15.5	10.1	16.1	9.8	
	25.0	13.4	9.9	13.7	10.1	14.3	9.9	14.6	10.0	14.8	10.3	15.4	10.0	16.0	9.7	
	27.5	13.3	9.8	13.6	10.1	14.1	9.8	14.4	9.9	14.7	10.2	15.3	10.0	15.8	9.7	
	30.0	13.2	9.8	13.4	10.0	14.0	9.8	14.3	9.9	14.6	10.2	15.1	9.9	15.7	9.6	
	32.5	13.0	9.7	13.3	9.9	13.9	9.7	14.1	9.8	14.4	10.1	15.0	9.9	15.5	9.6	
	35.0	12.9	9.6	13.2	9.9	13.7	9.7	14.0	9.7	14.3	10.1	14.8	9.8	15.4	9.5	
	37.5	12.7	9.6	13.0	9.8	13.6	9.6	13.9	9.7	14.1	10.0	14.7	9.8	15.3	9.5	
	40.0	12.6	9.5	12.9	9.7	13.4	9.5	13.7	9.6	14.0	9.9	14.6	9.7	15.1	9.4	
43.0	12.4	9.4	12.7	9.6	13.3	9.5	13.6	9.6	13.8	9.9	14.4	9.6	15.0	9.4		

## 2-4.Heating Capacity (In combination with PU(H)Y,PURY-(P)200-250YMF-C)

### PLFY-P-VLMD-A

Unit size	Outdoor air temp. °CWB	Indoor air temp.:°CDB			
		15.0	20.0	25.0	27.0
		SHC	SHC	SHC	SHC
20	-15.0	1.7	1.6	1.6	1.6
	-10.0	1.9	1.9	1.9	1.7
	-5.0	2.1	2.1	2.0	1.7
	0.0	2.4	2.4	2.0	1.7
	2.5	2.5	2.5	2.0	1.7
	6.0	2.5	2.5	2.0	1.7
	7.5	2.6	2.5	2.0	1.7
	10.0	2.8	2.5	2.0	1.7
	12.5	3.0	2.5	2.0	1.7
15.5	3.0	2.5	2.0	1.7	
25	-15.0	2.1	2.1	2.1	2.1
	-10.0	2.4	2.4	2.4	2.2
	-5.0	2.7	2.7	2.5	2.2
	0.0	3.1	3.0	2.5	2.2
	2.5	3.2	3.2	2.5	2.2
	6.0	3.2	3.2	2.5	2.2
	7.5	3.4	3.2	2.5	2.2
	10.0	3.6	3.2	2.5	2.2
	12.5	3.8	3.2	2.5	2.2
15.5	3.9	3.2	2.5	2.2	
32	-15.0	2.7	2.6	2.6	2.6
	-10.0	3.1	3.0	3.0	2.8
	-5.0	3.4	3.4	3.1	2.8
	0.0	3.8	3.8	3.1	2.8
	2.5	4.0	4.0	3.1	2.8
	6.0	4.0	4.0	3.1	2.8
	7.5	4.2	4.0	3.1	2.8
	10.0	4.5	4.0	3.1	2.8
	12.5	4.8	4.0	3.1	2.8
15.5	4.8	4.0	3.1	2.8	
40	-15.0	3.3	3.3	3.3	3.3
	-10.0	3.8	3.8	3.7	3.5
	-5.0	4.3	4.2	3.9	3.5
	0.0	4.8	4.7	3.9	3.5
	2.5	5.0	5.0	3.9	3.5
	6.0	5.1	5.0	3.9	3.5
	7.5	5.3	5.0	3.9	3.5
	10.0	5.6	5.0	3.9	3.5
	12.5	6.0	5.0	3.9	3.5
15.5	6.1	5.0	3.9	3.5	
50	-15.0	4.2	4.2	4.1	4.1
	-10.0	4.8	4.8	4.7	4.3
	-5.0	5.4	5.3	4.9	4.3
	0.0	6.0	5.9	4.9	4.3
	2.5	6.3	6.2	4.9	4.3
	6.0	6.4	6.3	4.9	4.3
	7.5	6.6	6.3	4.9	4.3
	10.0	7.1	6.3	4.9	4.3
	12.5	7.5	6.3	4.9	4.3
15.5	7.6	6.3	4.9	4.3	

SHC:Sensible heat Capacity(kW)

Unit size	Outdoor air temp. °CWB	Indoor air temp.:°CDB			
		15.0	20.0	25.0	27.0
		SHC	SHC	SHC	SHC
63	-15.0	5.4	5.3	5.2	5.2
	-10.0	6.1	6.0	6.0	5.5
	-5.0	6.9	6.8	6.2	5.5
	0.0	7.6	7.5	6.2	5.5
	2.5	8.0	7.9	6.2	5.5
	6.0	8.1	8.0	6.2	5.5
	7.5	8.4	8.0	6.2	5.5
	10.0	9.0	8.0	6.2	5.5
	12.5	9.6	8.0	6.2	5.5
15.5	9.7	8.0	6.2	5.5	
80	-15.0	6.7	6.6	6.5	6.5
	-10.0	7.6	7.5	7.4	6.9
	-5.0	8.6	8.5	7.8	6.9
	0.0	9.5	9.4	7.8	6.9
	2.5	10.0	9.9	7.8	6.9
	6.0	10.1	10.0	7.8	6.9
	7.5	10.5	10.0	7.8	6.9
	10.0	11.2	10.0	7.8	6.9
	12.5	12.0	10.0	7.8	6.9
15.5	12.1	10.0	7.8	6.9	
100	-15.0	8.4	8.2	8.2	8.1
	-10.0	9.6	9.4	9.3	8.6
	-5.0	10.7	10.6	9.8	8.6
	0.0	11.9	11.8	9.8	8.6
	2.5	12.5	12.4	9.8	8.6
	6.0	12.6	12.5	9.8	8.6
	7.5	13.2	12.5	9.8	8.6
	10.0	14.1	12.5	9.8	8.6
	12.5	15.0	12.5	9.8	8.6
15.5	15.1	12.5	9.8	8.6	
125	-15.0	10.7	10.6	10.5	10.4
	-10.0	12.2	12.1	11.9	11.0
	-5.0	13.7	13.6	12.5	11.0
	0.0	15.3	15.1	12.5	11.0
	2.5	16.0	15.8	12.5	11.0
	6.0	16.2	16.0	12.5	11.0
	7.5	16.8	16.0	12.5	11.0
	10.0	18.0	16.0	12.5	11.0
	12.5	19.1	16.0	12.5	11.0
15.5	19.4	16.0	12.5	11.0	

PLFY-P-VLMD-A



**2-5.Cooling capacity  
(In combination with PUHY-(P)315-400-500-600-650-700-750Y(S)MF-B,Y(S)MC)**

**PLFY-P-VLMD-A**

CA:Capacity(kcal/h)

SHC:Sensible heat Capacity(kcal/h)

Unit size	Outdoor air temp.	Indoor air temp.													
		21.5°CDB 15°CWB		23°CDB 16°CWB		25°CDB 18°CWB		27°CDB 19.5°CWB		28°CDB 20°CWB		30°CDB 22°CWB		32°CDB 24°CWB	
		°CDB	CA	SHC	CA	SHC	CA	SHC	CA	SHC	CA	SHC	CA	SHC	CA
20	20.0	1813	1488	1901	1554	2049	1552	2157	1601	2192	1653	2320	1630	2459	1606
	22.5	1813	1488	1894	1550	2031	1544	2131	1590	2164	1642	2290	1619	2424	1595
	25.0	1799	1482	1876	1542	2008	1534	2105	1580	2137	1631	2259	1608	2389	1583
	27.5	1784	1475	1857	1534	1985	1525	2079	1569	2110	1621	2229	1597	2354	1571
	30.0	1770	1468	1839	1526	1962	1515	2052	1559	2083	1610	2198	1586	2319	1560
	32.5	1755	1462	1821	1517	1939	1505	2026	1548	2055	1599	2167	1575	2285	1548
	35.0	1741	1455	1802	1509	1916	1496	2000	1538	2028	1589	2137	1564	2250	1537
	37.5	1726	1448	1784	1501	1893	1486	1974	1528	2001	1578	2106	1553	2215	1525
	40.0	1712	1442	1766	1493	1870	1477	1948	1517	1974	1568	2076	1542	2180	1514
43.0	1695	1434	1744	1483	1843	1465	1916	1505	1941	1555	2039	1529	2139	1500	
25	20.0	2266	1705	2377	1775	2561	1775	2697	1825	2740	1877	2900	1850	3073	1821
	22.5	2266	1705	2367	1771	2539	1765	2664	1811	2705	1862	2862	1835	3030	1805
	25.0	2248	1697	2345	1760	2510	1753	2631	1797	2671	1848	2824	1820	2986	1790
	27.5	2230	1688	2322	1749	2482	1740	2598	1783	2637	1834	2786	1805	2943	1774
	30.0	2212	1679	2299	1738	2453	1727	2566	1769	2603	1820	2748	1791	2899	1759
	32.5	2194	1670	2276	1727	2424	1714	2533	1755	2569	1805	2709	1776	2856	1744
	35.0	2176	1661	2253	1716	2395	1701	2500	1741	2535	1791	2671	1761	2812	1728
	37.5	2158	1653	2230	1705	2367	1689	2467	1728	2501	1777	2633	1747	2769	1713
	40.0	2140	1644	2207	1695	2338	1676	2434	1714	2467	1763	2595	1732	2725	1698
43.0	2118	1633	2180	1682	2304	1661	2395	1698	2426	1747	2549	1715	2673	1680	
32	20.0	2855	2075	2995	2158	3227	2160	3398	2216	3452	2275	3654	2242	3872	2206
	22.5	2855	2075	2983	2152	3199	2147	3357	2198	3409	2256	3606	2222	3817	2185
	25.0	2833	2064	2954	2138	3163	2130	3315	2179	3366	2237	3558	2203	3763	2165
	27.5	2810	2053	2925	2124	3127	2113	3274	2161	3323	2219	3510	2183	3708	2145
	30.0	2787	2041	2896	2109	3091	2096	3233	2143	3280	2200	3462	2164	3653	2125
	32.5	2765	2030	2868	2095	3055	2080	3191	2125	3237	2182	3414	2145	3598	2104
	35.0	2742	2018	2839	2081	3018	2063	3150	2107	3194	2164	3366	2126	3544	2085
	37.5	2719	2007	2810	2067	2982	2047	3109	2089	3151	2145	3318	2107	3489	2065
	40.0	2696	1995	2781	2053	2946	2030	3067	2072	3109	2127	3270	2088	3434	2045
43.0	2669	1982	2746	2036	2902	2011	3018	2050	3057	2105	3212	2066	3368	2021	
40	20.0	3625	2672	3803	2779	4098	2781	4315	2855	4383	2933	4640	2891	4917	2846
	22.5	3625	2672	3788	2772	4063	2765	4262	2832	4329	2910	4579	2866	4848	2820
	25.0	3597	2658	3751	2754	4017	2744	4210	2809	4274	2886	4518	2842	4778	2794
	27.5	3568	2643	3715	2736	3971	2723	4157	2787	4220	2863	4457	2818	4708	2769
	30.0	3539	2629	3678	2718	3925	2702	4105	2764	4165	2840	4396	2794	4639	2744
	32.5	3511	2614	3641	2701	3879	2681	4052	2742	4111	2817	4335	2770	4569	2719
	35.0	3482	2600	3605	2683	3833	2660	4000	2719	4056	2794	4274	2746	4500	2694
	37.5	3453	2586	3568	2665	3787	2639	3948	2697	4002	2771	4213	2723	4430	2669
	40.0	3424	2572	3531	2648	3741	2619	3895	2674	3947	2748	4152	2699	4361	2644
43.0	3389	2555	3487	2627	3686	2594	3832	2648	3882	2721	4078	2671	4277	2614	
50	20.0	4532	3293	4753	3424	5123	3427	5393	3516	5479	3609	5800	3557	6146	3500
	22.5	4532	3293	4735	3415	5078	3406	5328	3487	5411	3580	5724	3526	6059	3467
	25.0	4496	3275	4689	3392	5021	3380	5262	3458	5343	3550	5648	3495	5972	3435
	27.5	4460	3257	4643	3370	4963	3353	5197	3429	5275	3521	5571	3464	5886	3403
	30.0	4424	3239	4597	3347	4906	3327	5131	3401	5207	3491	5495	3434	5799	3371
	32.5	4388	3221	4552	3325	4848	3300	5066	3372	5139	3462	5419	3403	5712	3339
	35.0	4352	3202	4506	3302	4791	3274	5000	3344	5070	3433	5342	3373	5625	3307
	37.5	4316	3184	4460	3280	4734	3248	4934	3315	5002	3404	5266	3343	5538	3276
	40.0	4280	3166	4414	3258	4676	3222	4869	3287	4934	3375	5190	3313	5451	3244
43.0	4237	3145	4359	3231	4607	3190	4790	3253	4852	3341	5098	3278	5347	3207	
63	20.0	5710	4192	5989	4360	6455	4363	6796	4479	6904	4600	7309	4534	7744	4462
	22.5	5710	4192	5966	4349	6399	4337	6713	4443	6818	4563	7212	4495	7635	4422
	25.0	5665	4170	5908	4321	6326	4304	6630	4407	6732	4526	7116	4457	7525	4381
	27.5	5620	4147	5851	4293	6254	4271	6548	4371	6646	4490	7020	4419	7416	4341
	30.0	5574	4124	5793	4264	6181	4238	6465	4335	6560	4453	6924	4381	7306	4301
	32.5	5529	4102	5735	4236	6109	4205	6383	4299	6475	4417	6828	4343	7197	4262
	35.0	5484	4079	5677	4208	6037	4172	6300	4264	6389	4380	6731	4305	7087	4222
	37.5	5438	4056	5620	4181	5964	4140	6217	4229	6303	4344	6635	4268	6978	4183
	40.0	5393	4034	5562	4153	5892	4107	6135	4193	6217	4308	6539	4230	6868	4144
43.0	5338	4007	5493	4120	5805	4068	6036	4151	6114	4265	6424	4186	6737	4097	

PLFY-P-VLMD-A

# Cooling capacity (In combination with PUHY-(P)315-400-500-600-650-700-750Y(S)MF-B,Y(S)MC)

CA:Capacity(kcal/h)

SHC:Sensible heat Capacity(kcal/h)

## PLFY-P-VLMD-A

Unit size	Outdoor air temp.	Indoor air temp.													
		21.5°CDB 15°CWB		23°CDB 16°CWB		25°CDB 18°CWB		27°CDB 19.5°CWB		28°CDB 20°CWB		30°CDB 22°CWB		32°CDB 24°CWB	
		CA	SHC	CA	SHC	CA	SHC	CA	SHC	CA	SHC	CA	SHC	CA	SHC
80	20.0	7251	5247	7605	5454	8196	5460	8629	5601	8767	5748	9281	5664	9834	5573
	22.5	7251	5247	7576	5440	8125	5427	8525	5554	8658	5700	9159	5614	9695	5521
	25.0	7194	5218	7503	5403	8033	5384	8420	5507	8549	5652	9036	5564	9556	5469
	27.5	7136	5189	7429	5367	7941	5341	8315	5461	8440	5605	8914	5515	9417	5417
	30.0	7079	5159	7356	5331	7849	5298	8210	5415	8331	5557	8792	5466	9278	5365
	32.5	7021	5130	7283	5294	7758	5256	8105	5369	8222	5510	8670	5417	9139	5314
	35.0	6963	5101	7209	5258	7666	5214	8000	5323	8113	5464	8548	5369	9000	5263
	37.5	6906	5072	7136	5222	7574	5171	7895	5277	8004	5417	8426	5320	8861	5212
	40.0	6848	5043	7063	5187	7482	5130	7790	5232	7895	5371	8304	5272	8722	5162
43.0	6779	5008	6975	5144	7371	5079	7664	5178	7764	5315	8157	5215	8555	5102	
100	20.0	9063	6879	9507	7163	10245	7162	10787	7364	10958	7577	11601	7469	12293	7353
	22.5	9063	6879	9470	7146	10157	7122	10656	7308	10822	7520	11448	7410	12119	7291
	25.0	8993	6844	9378	7102	10042	7071	10525	7253	10686	7464	11296	7351	11945	7229
	27.5	8920	6809	9287	7058	9927	7020	10393	7198	10550	7407	11143	7292	11771	7167
	30.0	8848	6774	9195	7015	9812	6969	10262	7143	10413	7351	10990	7234	11597	7106
	32.5	8776	6739	9103	6972	9697	6918	10131	7088	10277	7295	10837	7175	11423	7045
	35.0	8704	6704	9012	6929	9582	6868	10000	7033	10141	7239	10685	7117	11250	6984
	37.5	8632	6669	8920	6886	9467	6818	9869	6978	10005	7183	10532	7060	11076	6923
	40.0	8560	6634	8828	6843	9352	6767	9738	6924	9868	7128	10379	7002	10902	6863
43.0	8474	6592	8718	6792	9214	6707	9580	6859	9705	7062	10196	6934	10693	6791	
125	20.0	11329	8412	11883	8753	12807	8756	13484	8994	13698	9243	14501	9109	15366	8966
	22.5	11329	8412	11837	8731	12696	8705	13320	8923	13527	9171	14310	9034	15149	8887
	25.0	11241	8368	11723	8675	12552	8640	13156	8852	13357	9098	14119	8959	14931	8808
	27.5	11151	8323	11608	8620	12408	8575	12992	8781	13187	9026	13929	8884	14714	8729
	30.0	11060	8279	11494	8565	12265	8510	12828	8711	13017	8955	13738	8809	14497	8651
	32.5	10970	8234	11379	8510	12121	8446	12664	8641	12846	8883	13547	8735	14279	8573
	35.0	10880	8189	11265	8455	11977	8381	12500	8572	12676	8812	13356	8661	14062	8495
	37.5	10790	8145	11150	8400	11834	8317	12336	8502	12506	8741	13165	8588	13845	8418
	40.0	10700	8101	11035	8346	11690	8253	12172	8433	12335	8671	12974	8515	13627	8342
43.0	10592	8048	10898	8280	11518	8177	11975	8350	12131	8586	12745	8427	13367	8250	

PLFY-P-VLMD-A

**2-6.Heating capacity  
(In combination with PUHY-(P)315-400-500-600-650-700-750Y(S)MF-B,Y(S)MC)**

**PLFY-P-VLMD-A**

Unit size	Outdoor air temp.	Indoor air temp.:°CDB			
		15	21	25	27
		°CWB	SHC	SHC	SHC
20	-15.0	1555	1532	1509	1500
	-10.0	1774	1751	1728	1601
	-5.0	1994	1970	1809	1601
	0.0	2213	2190	1809	1601
	2.5	2322	2250	1809	1601
	6.0	2343	2250	1809	1601
	7.5	2441	2250	1809	1601
	10.0	2605	2250	1809	1601
	12.5	2769	2250	1809	1601
	15.5	2807	2250	1809	1601
25	-15.0	1935	1907	1878	1866
	-10.0	2208	2179	2151	1992
	-5.0	2481	2452	2252	1992
	0.0	2754	2725	2252	1992
	2.5	2890	2800	2252	1992
	6.0	2915	2800	2252	1992
	7.5	3038	2800	2252	1992
	10.0	3242	2800	2252	1992
	12.5	3446	2800	2252	1992
	15.5	3493	2800	2252	1992
32	-15.0	2454	2417	2381	2366
	-10.0	2800	2763	2727	2525
	-5.0	3146	3109	2855	2525
	0.0	3491	3455	2855	2525
	2.5	3664	3550	2855	2525
	6.0	3696	3550	2855	2525
	7.5	3852	3550	2855	2525
	10.0	4111	3550	2855	2525
	12.5	4370	3550	2855	2525
	15.5	4428	3550	2855	2525
40	-15.0	3111	3064	3018	2999
	-10.0	3549	3503	3456	3201
	-5.0	3987	3941	3619	3201
	0.0	4426	4379	3619	3201
	2.5	4645	4500	3619	3201
	6.0	4686	4500	3619	3201
	7.5	4883	4500	3619	3201
	10.0	5211	4500	3619	3201
	12.5	5539	4500	3619	3201
	15.5	5613	4500	3619	3201
50	-15.0	3871	3813	3755	3732
	-10.0	4416	4359	4301	3984
	-5.0	4962	4904	4503	3984
	0.0	5508	5450	4503	3984
	2.5	5780	5600	4503	3984
	6.0	5831	5600	4503	3984
	7.5	6076	5600	4503	3984
	10.0	6484	5600	4503	3984
	12.5	6893	5600	4503	3984
	15.5	6986	5600	4503	3984

SHC:Sensible heat Capacity(kcal/h)

Unit size	Outdoor air temp.	Indoor air temp.:°CDB			
		15	21	25	27
		°CWB	SHC	SHC	SHC
63	-15.0	4908	4835	4761	4732
	-10.0	5599	5526	5453	5051
	-5.0	6291	6218	5709	5051
	0.0	6983	6910	5709	5051
	2.5	7329	7100	5709	5051
	6.0	7393	7100	5709	5051
	7.5	7704	7100	5709	5051
	10.0	8221	7100	5709	5051
	12.5	8739	7100	5709	5051
	15.5	8857	7100	5709	5051
80	-15.0	6221	6128	6036	5998
	-10.0	7098	7005	6912	6402
	-5.0	7975	7882	7237	6402
	0.0	8852	8759	7237	6402
	2.5	9290	9000	7237	6402
	6.0	9371	9000	7237	6402
	7.5	9765	9000	7237	6402
	10.0	10421	9000	7237	6402
	12.5	11078	9000	7237	6402
	15.5	11227	9000	7237	6402
100	-15.0	7742	7626	7511	7465
	-10.0	8833	8718	8602	7967
	-5.0	9924	9809	9006	7967
	0.0	11015	10900	9006	7967
	2.5	11561	11200	9006	7967
	6.0	11662	11200	9006	7967
	7.5	12152	11200	9006	7967
	10.0	12969	11200	9006	7967
	12.5	13786	11200	9006	7967
	15.5	13971	11200	9006	7967
125	-15.0	9677	9533	9389	9331
	-10.0	11041	10897	10753	9959
	-5.0	12405	12261	11258	9959
	0.0	13769	13625	11258	9959
	2.5	14451	14000	11258	9959
	6.0	14577	14000	11258	9959
	7.5	15190	14000	11258	9959
	10.0	16211	14000	11258	9959
	12.5	17232	14000	11258	9959
	15.5	17464	14000	11258	9959

PLFY-P-VLMD-A

## 2-7.Cooling Capacity (In combination with PQRV-P200-250YMF-B)

### PLFY-P-VLMD-A

CA:Capacity(kcal/h)

SHC:Sensible heat Capacity(kcal/h)

Unit size	Water temp.	Indoor air temp.													
		21.5°CDB 15°CWB		23°CDB 16°CWB		25°CDB 18°CWB		27°CDB 19.5°CWB		28°CDB 20°CWB		30°CDB 22°CWB		32°CDB 24°CWB	
	°C	CA	SHC	CA	SHC	CA	SHC	CA	SHC	CA	SHC	CA	SHC	CA	SHC
20	10	1914	1536	1980	1589	2105	1576	2200	1618	2229	1667	2354	1643	2486	1616
	20	1844	1503	1908	1557	2029	1543	2120	1586	2148	1635	2268	1611	2396	1585
	30	1740	1455	1800	1508	1914	1495	2000	1538	2026	1588	2140	1565	2260	1540
	40	1514	1352	1566	1405	1665	1393	1740	1437	1763	1487	1862	1467	1966	1444
	45	1427	1313	1476	1366	1569	1354	1640	1399	1661	1449	1755	1429	1853	1408
25	10	2393	1768	2475	1823	2632	1807	2750	1848	2786	1896	2943	1866	3108	1834
	20	2306	1725	2385	1779	2536	1764	2650	1805	2684	1853	2836	1825	2995	1793
	30	2175	1661	2250	1715	2393	1700	2500	1741	2533	1790	2675	1763	2825	1733
	40	1892	1526	1958	1579	2081	1565	2175	1608	2203	1657	2327	1633	2458	1606
	45	1784	1475	1845	1528	1962	1515	2050	1558	2077	1608	2194	1584	2317	1559
32	10	3015	2157	3119	2220	3316	2201	3465	2246	3510	2300	3708	2263	3915	2222
	20	2905	2101	3005	2163	3195	2145	3339	2190	3382	2244	3573	2209	3773	2169
	30	2741	2018	2835	2079	3015	2062	3150	2107	3191	2162	3371	2128	3560	2090
	40	2384	1842	2466	1903	2623	1886	2741	1934	2776	1989	2932	1959	3097	1925
	45	2247	1776	2325	1837	2472	1821	2583	1869	2617	1925	2764	1896	2919	1864
40	10	3828	2775	3960	2857	4211	2833	4400	2893	4457	2965	4708	2918	4972	2866
	20	3689	2704	3816	2786	4058	2762	4240	2823	4295	2895	4537	2849	4791	2799
	30	3480	2599	3600	2681	3828	2658	4000	2719	4052	2792	4280	2749	4520	2701
	40	3028	2379	3132	2460	3330	2439	3480	2502	3525	2575	3724	2537	3932	2494
	45	2854	2297	2952	2377	3139	2356	3280	2420	3323	2495	3510	2458	3706	2417
50	10	4785	3424	4950	3522	5264	3493	5500	3564	5572	3650	5885	3591	6215	3526
	20	4611	3334	4770	3432	5072	3403	5300	3475	5369	3561	5671	3504	5989	3441
	30	4350	3201	4500	3299	4785	3271	5000	3344	5065	3431	5350	3376	5650	3316
	40	3785	2922	3915	3019	4163	2993	4350	3068	4407	3156	4655	3108	4916	3055
	45	3567	2818	3690	2915	3924	2889	4100	2965	4153	3053	4387	3007	4633	2957
63	10	6029	4355	6237	4483	6632	4445	6930	4538	7020	4651	7415	4577	7831	4494
	20	5810	4243	6010	4371	6391	4334	6678	4428	6765	4540	7145	4468	7546	4389
	30	5481	4078	5670	4205	6029	4169	6300	4264	6382	4378	6741	4309	7119	4233
	40	4768	3730	4933	3856	5245	3822	5481	3920	5552	4035	5865	3974	6194	3907
	45	4494	3599	4649	3725	4944	3692	5166	3791	5233	3907	5528	3849	5838	3785
80	10	7656	5456	7920	5613	8422	5566	8800	5677	8914	5813	9416	5719	9944	5615
	20	7378	5312	7632	5468	8115	5422	8480	5534	8590	5670	9074	5579	9582	5479
	30	6960	5099	7200	5254	7656	5209	8000	5323	8104	5460	8660	5373	9040	5278
	40	6055	4651	6264	4804	6661	4762	6960	4880	7050	5019	7447	4942	7865	4857
	45	5707	4484	5904	4636	6278	4595	6560	4714	6645	4854	7019	4781	7413	4700
100	10	9570	7129	9900	7352	10527	7288	11000	7455	11143	7655	11770	7534	12430	7402
	20	9222	6956	9540	7179	10144	7117	10600	7285	10738	7485	11342	7369	11978	7240
	30	8700	6702	9000	6923	9570	6863	10000	7033	10130	7235	10700	7123	11300	7001
	40	7569	6163	7830	6383	8326	6327	8700	6502	8813	6706	9309	6606	9831	6498
	45	7134	5961	7380	6181	7847	6126	8200	6303	8307	6508	8774	6413	9266	6310
125	10	11963	8731	12375	8994	13159	8917	13750	9110	13929	9342	14713	9193	15538	9029
	20	11528	8511	11925	8773	12680	8698	13250	8893	13422	9126	14178	8982	14973	8823
	30	10875	8187	11250	8448	11963	8375	12500	8572	12663	8806	13375	8669	14125	8518
	40	9461	7503	9788	7761	10407	7693	10875	7896	11016	8134	11636	8011	12289	7877
	45	8918	7246	9225	7504	9809	7438	10250	7643	10383	7882	10968	7765	11583	7638

PLFY-P-VLMD-A

**2-8.Heating Capacity (In combination with PQRV-P200-250YMF-B)**

**PLFY-P-VLMD-A**

Unit size	Water temp.	Indoor air temp.:°CDB			
		15	21	25	27
	°C	SHC	SHC	SHC	SHC
20	10	1951	1913	1549	1377
	20	2295	2250	1823	1620
	30	2295	2250	1823	1620
	40	2387	2340	1895	1685
	45	2616	2565	2078	1847
25	10	2428	2380	1928	1714
	20	2856	2800	2268	2016
	30	2856	2800	2268	2016
	40	2970	2912	2359	2097
	45	3256	3192	2586	2298
32	10	3078	3018	2444	2173
	20	3621	3550	2876	2556
	30	3621	3550	2876	2556
	40	3766	3692	2991	2658
	45	4128	4047	3278	2914
40	10	3902	3825	3098	2754
	20	4590	4500	3645	3240
	30	4590	4500	3645	3240
	40	4774	4680	3791	3370
	45	5233	5130	4155	3694
50	10	4855	4760	3856	3427
	20	5712	5600	4536	4032
	30	5712	5600	4536	4032
	40	5940	5824	4717	4193
	45	6512	6384	5171	4596

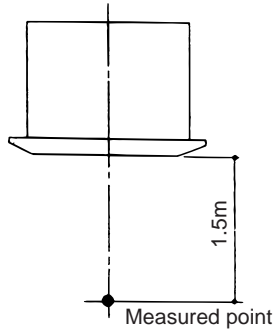
SHC:Sensible heat Capacity(kcal/h)

Unit size	Water temp.	Indoor air temp.:°CDB			
		15	21	25	27
	°C	SHC	SHC	SHC	SHC
63	10	6156	6035	4888	4345
	20	7242	7100	5751	5112
	30	7242	7100	5751	5112
	40	7532	7384	5981	5316
	45	8256	8094	6556	5828
80	10	7803	7650	6197	5508
	20	9180	9000	7290	6480
	30	9180	9000	7290	6480
	40	9547	9360	7582	6739
	45	10465	10260	8311	7387
100	10	9710	9520	7711	6854
	20	11424	11200	9072	8064
	30	11424	11200	9072	8064
	40	11881	11648	9435	8387
	45	13023	12768	10342	9193
125	10	12138	11900	9639	8568
	20	14280	14000	11340	10080
	30	14280	14000	11340	10080
	40	14851	14560	11794	10483
	45	16279	15960	12928	11491

# 3. Sound levels

## 3-1. Noise level

Cassette ceiling (VLMD-A series)

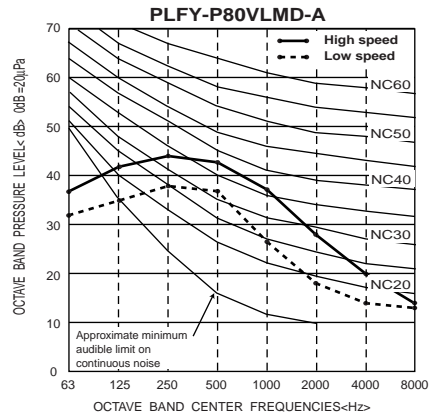
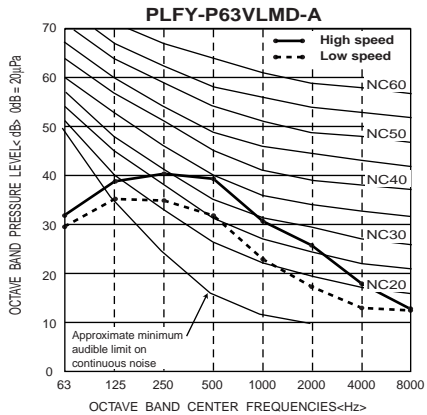
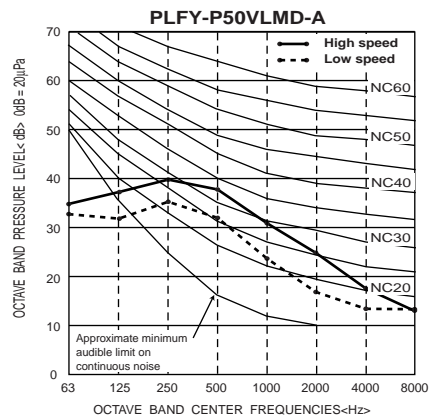
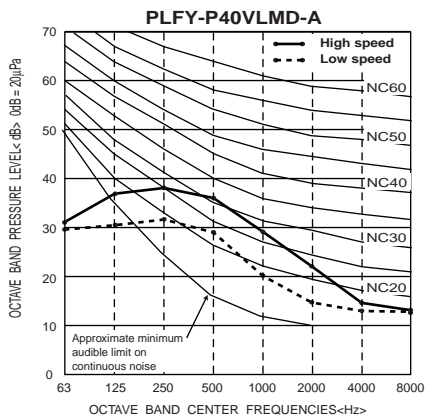
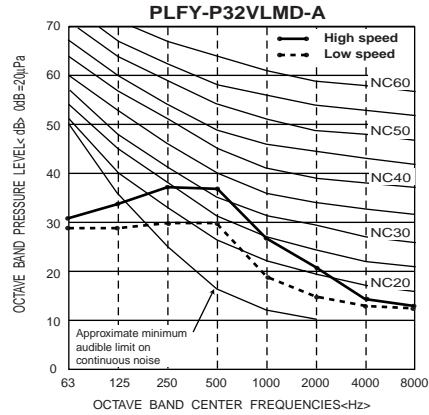
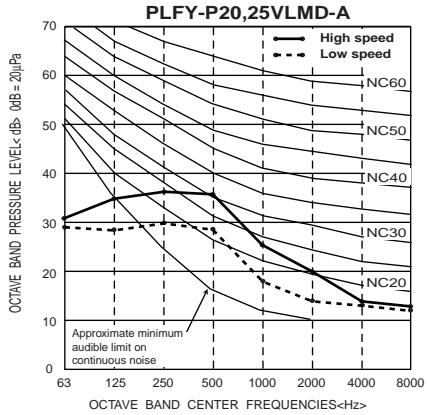


Noise level at anechoic room (Low-Middle2-Middle1-High)

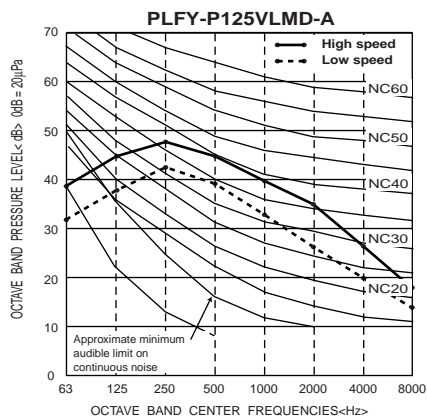
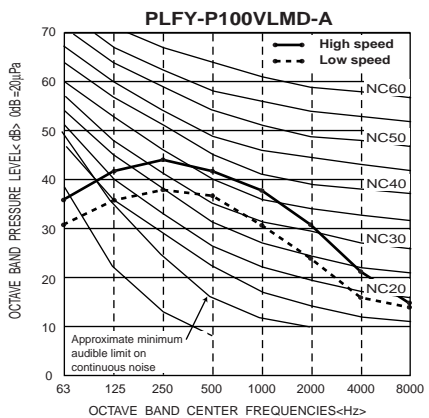
Unit : dB(A)

Model	Noise level (A weighted)
PLFY-P20VLMD-A PLFY-P25VLMD-A	28-30-33-35
PLFY-P32VLMD-A	29-31-34-36
PLFY-P40VLMD-A	29-32-34-36
PLFY-P50VLMD-A	32-34-36-38
PLFY-P63VLMD-A	32-34-37-39
PLFY-P80VLMD-A	36-38-41-43
PLFY-P100VLMD-A	37-39-41-43
PLFY-P125VLMD-A	40-42-44-46

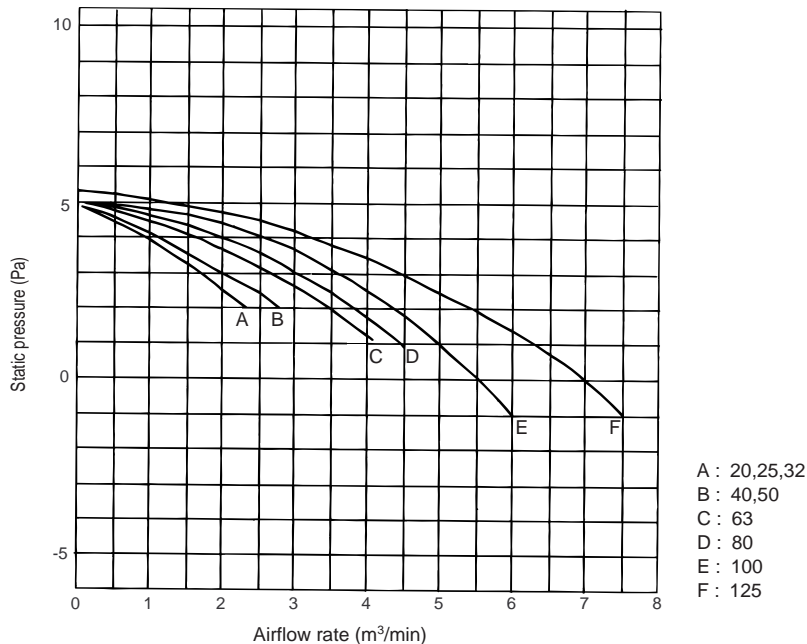
## 3-2. NC curves



PLFY-P-VLMD-A

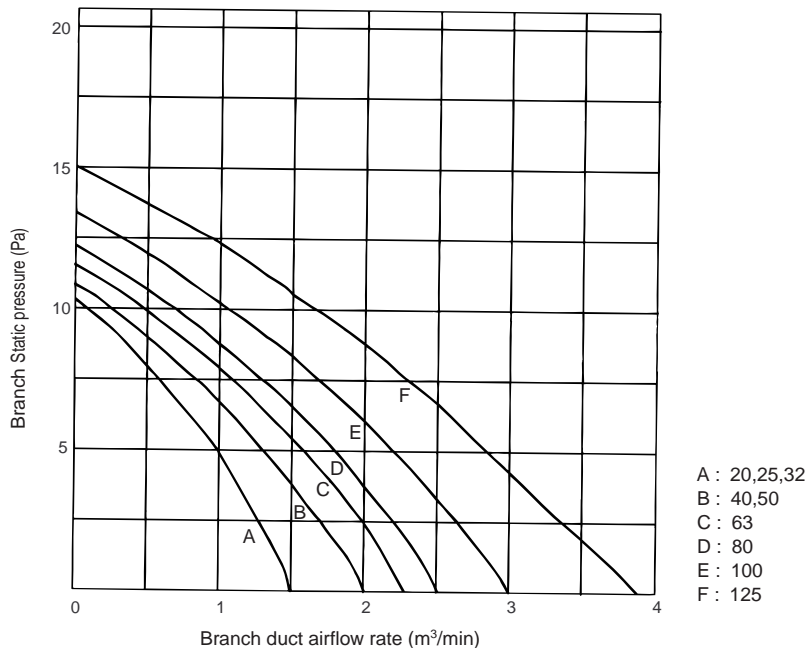


### 3-3. OA Intake-static pressure curve



PLFY-P-VLMD-A

### 3-4. Branch duct Intake-static pressure curve



# 4. External Dimensions

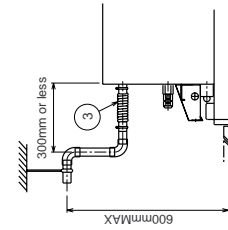
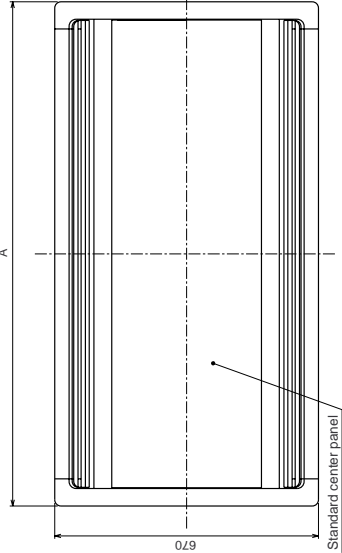
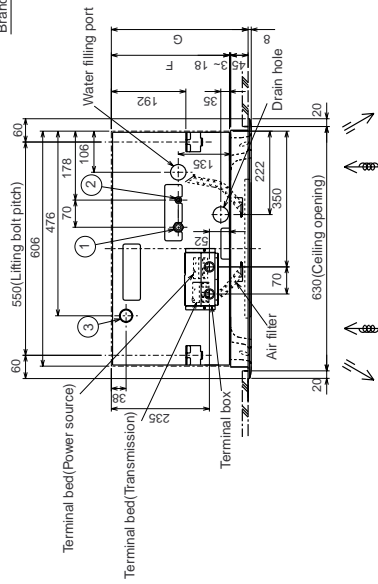
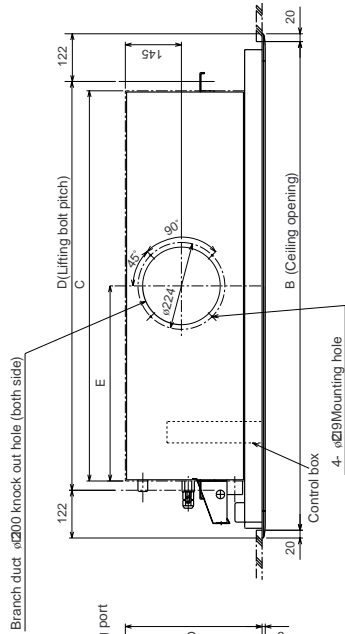
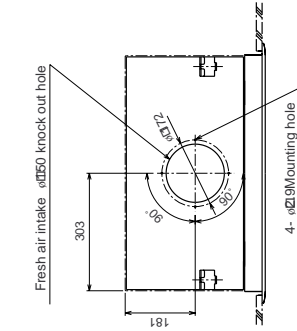
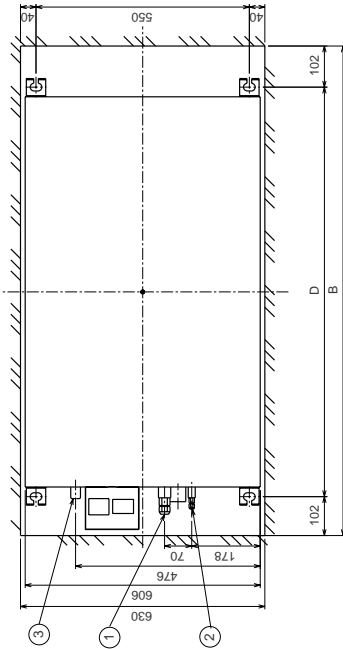
PLFY-P20, 25, 32, 40, 50, 63, 80V LMD-A

Unit : mm

PLFY-P-V LMD-A

Note: 1. Use M10 screw for the lifting bolt (field supply).

- Model 20-25-32-40 : LP  $\phi$  12.7
- Model 20-25-32-40 : LP  $\phi$  15.88
- Model 50-63-80 : LP  $\phi$  15.88
- Model 20-25-32-40 : HP  $\phi$  6.35
- Model 50-63-80 : HP  $\phi$  9.52
- Drain hose : VP-25-<flexible joint> (accessory)

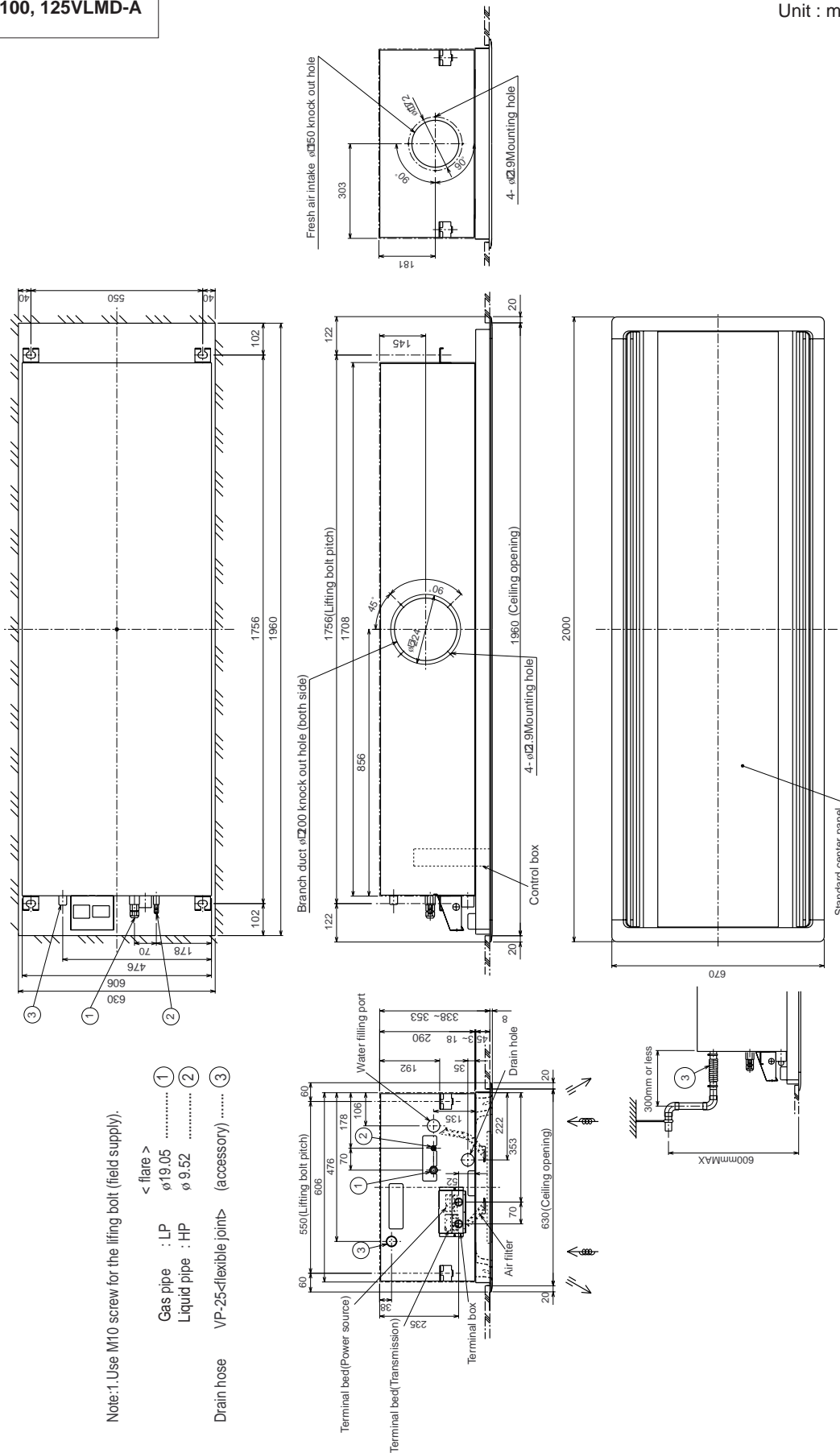


Model	A	B	C	D	E	F	G
PLFY-P20V LMD-A	1060	1020	768	816	386	Standard center panel	Standard center panel
P25	300	1260	1008	1056	506	290	338-353
P32							
P40							
P50							
P63							
P80							



PLFY-P100, 125VLMD-A

Unit : mm

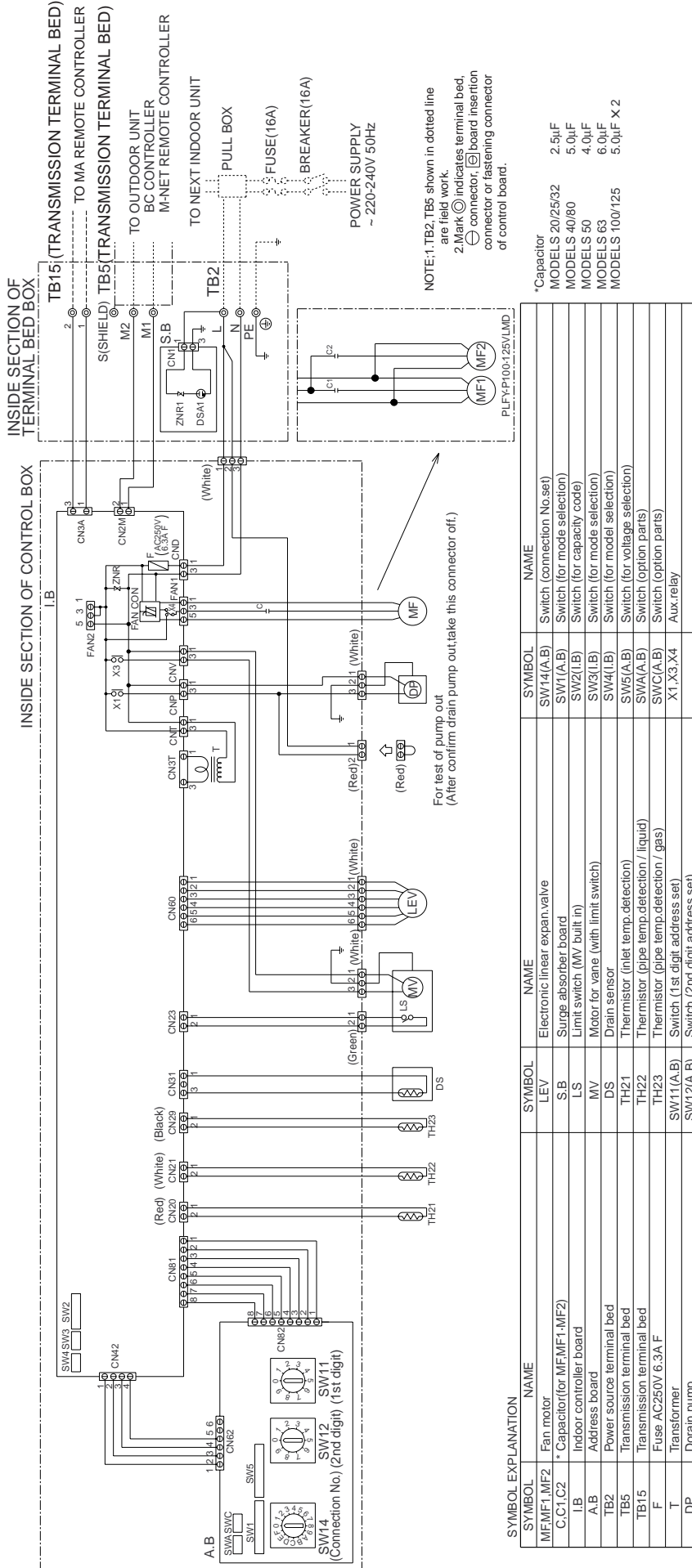


Note: 1. Use M10 screw for the lifting bolt (field supply).

- < flare >
- Gas pipe : LP  $\phi 19.05$  ..... ①
- Liquid pipe : HP  $\phi 9.52$  ..... ②
- Drain hose VP-25-flexible joint> (accessory) ..... ③

PLFY-P-VLMD-A

# 5. Electrical Wiring Diagram



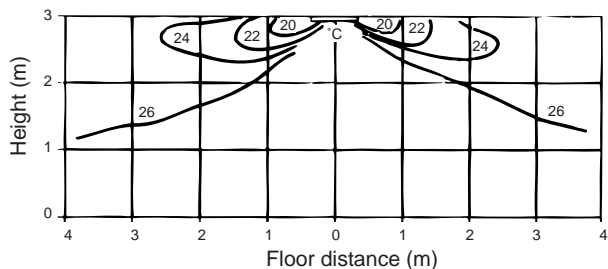
PLFY-P-VLMD-A

## 6. Temperature/Airflow distribution

### ● Temperature distribution

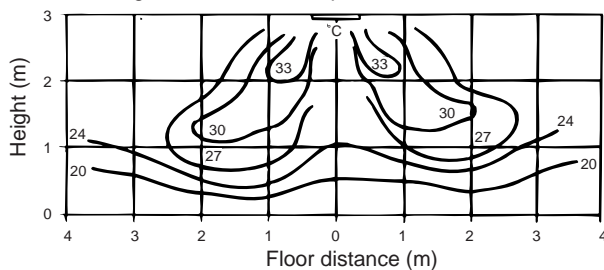
<Cooling mode>

Flow angle : 20° Room temp. : 27°C

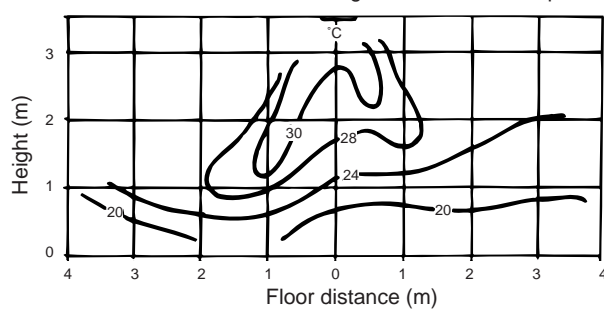


<Heating mode>

Flow angle : 70° Room temp. : 20°C



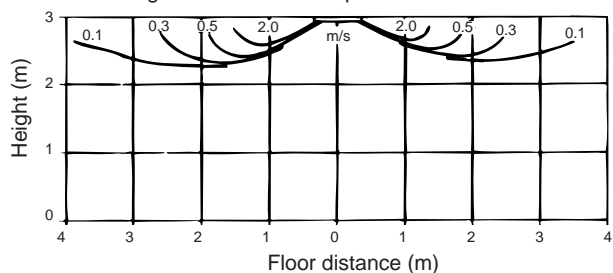
Airflow rate : Low Flow angle : 70° Room temp. : 21°C



### ● Airflow distribution

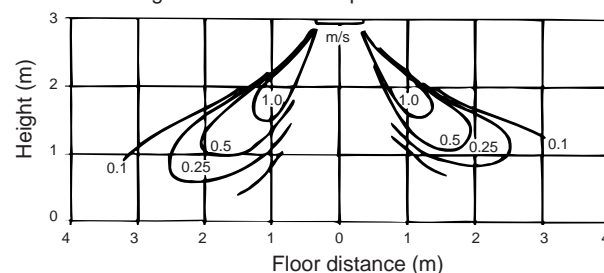
<Cooling mode>

Flow angle : 20° Room temp. : 27°C



<Heating mode>

Flow angle : 70° Room temp. : 20°C



PLFY-P-VLMD-A

## 7. Options

---

Description	Model	Applicable capacity
Decoration panel	CMP-32LW-F	P20/P25/P32
	CMP-40LW-F	P40/P50
	CMP-63LW-F	P63/P80
	CMP-125LW-F	P100/P125