



PEFY-P20VMR-E

Indoor Unit

Low Noise Ceiling Concealed Ducted



The low noise ceiling concealed ducted indoor unit is particularly suitable for residential hotels, museums, libraries or hospitals where low noise is a must.

- **Extremely quiet operation - 22dBA**
- **Ideal for application in hotels and apartments with simplified hotel controller, PAC-SE51CRA**
- **Cooling operation set temperature can be set down to 14°C db when used with R410A**



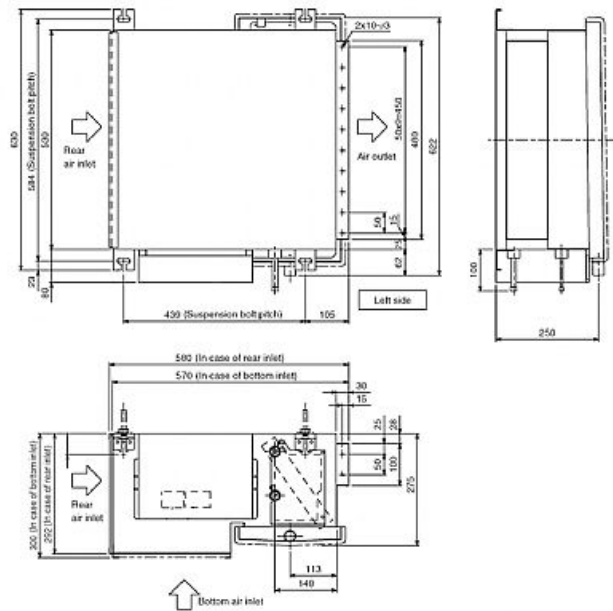
Pictures not to scale

Product Details

PEFY-P20VMR-E	
Capacity (kW):	
Heating (Nominal)	2.5
Cooling (Nominal)	2.2
Heating (UK)	2.3
Cooling (UK)	2.0
SHF R410A (UK)	0.85
Power Input (kW) Heating (Nominal)	0.06
Power Input (kW) Cooling (Nominal)	0.06
Airflow (m3/min) - Lo-Mi-Hi	4.8-5.8-7.9
External Static Pressure Pa	5
Noise (dBA) - Lo-Mi-Hi	22-27-30
Width - mm	640
Depth - mm	580
Height - mm	292
Weight - kg	18
Electrical Supply	220-240v, 50Hz
Phase	Single
Mains Cable No. Cores	3
Running Current (A) - Heating	0.29
Running Current (A) - Cooling	0.29
Fuse Rating (BS88) - HRC (A)	6

Dimensions

PEFY-P20VMR-E



Telephone: 01707 282880

Email: air.conditioning@meuk.mee.com Website: <http://www.mitsubishielectric.co.uk/aircon>

Mitsubishi Electric reserves the right to make any variation in technical specification to the equipment described, or to withdraw or replace products without prior notification or public announcement.

Tel:
Fax:

