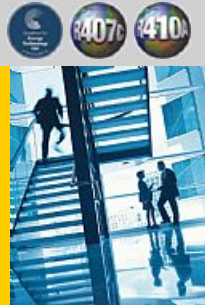




GUF-100RD3

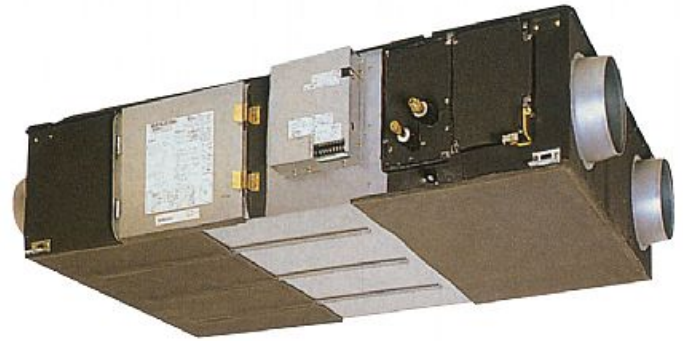
Lossnay Outdoor Air Processing Unit

R410A & R407c



The GUF-RD3 Outdoor Air Processing Units can be used with any of the extensive range of City Multi indoor units to provide ventilation, dust removal, humidification and heat recovery.

- **A combination of Lossnay and City Multi indoor in a single unit**
- **Air temperature in any room can be adjusted to the desired temperature via this unit which is used as an indoor unit of the City Multi air conditioning system**
- **The ventilating and air conditioning functions are integrated in a single unit, saving space and installation costs**
- **Heat recovery helps to save energy, a benefit that's not only good for the environment, but also great for cutting energy costs**
- **Free cooling is also available should outdoor conditions be suitable**



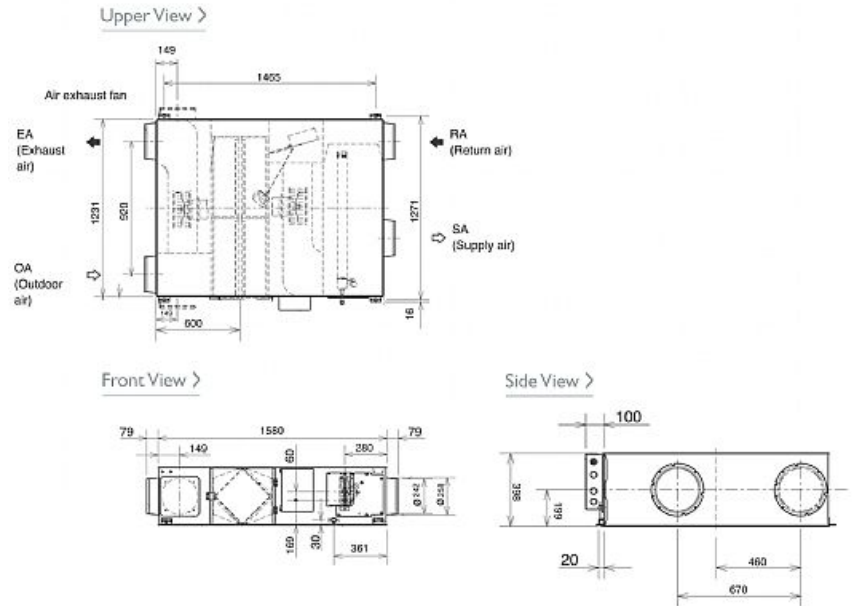
Pictures not to scale

Product Details

GUF-100RD3	
Capacity (kW):	
Heating (Nominal)	13.0 (4.7)
Cooling (Nominal)	10.81 (3.49)
R410A Heating (UK)	12.01 (4.34)
R407c Heating (UK)	12.01 (4.34)
R410A Cooling (UK)	10.27 (3.32)
R407c Cooling (UK)	10.27 (3.32)
Power Input (kW) Heating (UK)	0.505
Power Input (kW) Cooling (UK)	0.505
Airflow(m ³ /hour) - Lo-Hi	800-1000
Noise (dBA) - Lo-Hi	34-39
Width - mm	1231
Depth - mm	1580
Height - mm	398
Weight - kg	92
Electrical Supply	220-240v, 50Hz
Phase	Single
Mains Cable No. Cores	3
Running Current (A) - Lo-Hi	1.73-2.2
Fuse Rating (BS88) - HRC (A)	6

Dimensions

GUF-100RD3



Telephone: 01707 282880

Email: air.conditioning@meuk.mee.com Website: <http://www.mitsubishielectric.co.uk/aircon>

Mitsubishi Electric reserves the right to make any variation in technical specification to the equipment described, or to withdraw or replace products without prior notification or public announcement.

Tel:
Fax:

