



GUF-100RD3

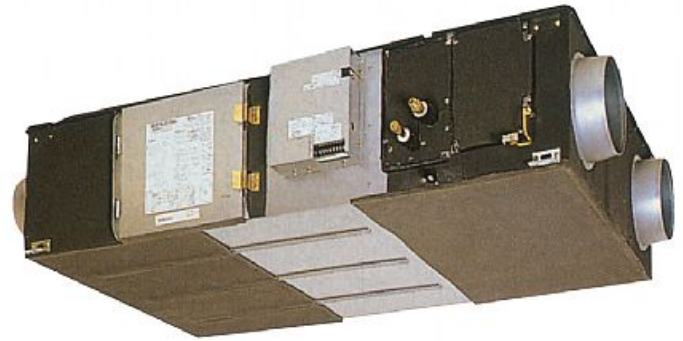
Lossnay Outdoor Air Processing Unit

R410A & R407c



The GUF-RD3 Outdoor Air Processing Units can be used with any of the extensive range of City Multi indoor units to provide ventilation, dust removal, humidification and heat recovery.

- **A combination of Lossnay and City Multi indoor in a single unit**
- **Air temperature in any room can be adjusted to the desired temperature via this unit which is used as an indoor unit of the City Multi air conditioning system**
- **The ventilating and air conditioning functions are integrated in a single unit, saving space and installation costs**
- **Heat recovery helps to save energy, a benefit that's not only good for the environment, but also great for cutting energy costs**
- **Free cooling is also available should outdoor conditions be suitable**



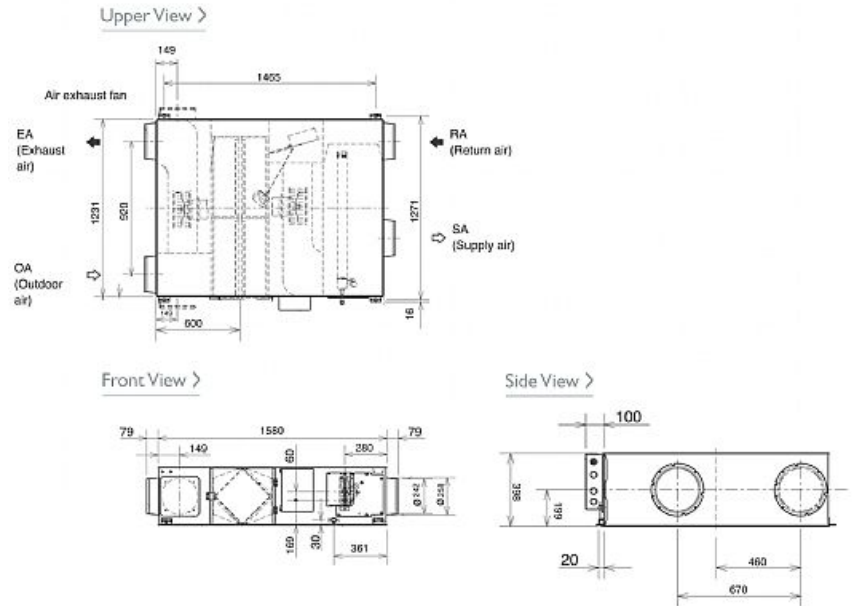
Pictures not to scale

Product Details

| GUF-100RD3 | |
|--|----------------|
| Capacity (kW): | |
| Heating (Nominal) | 13.0 (4.7) |
| Cooling (Nominal) | 10.81 (3.49) |
| R410A Heating (UK) | 12.01 (4.34) |
| R407c Heating (UK) | 12.01 (4.34) |
| R410A Cooling (UK) | 10.27 (3.32) |
| R407c Cooling (UK) | 10.27 (3.32) |
| Power Input (kW) Heating (UK) | 0.505 |
| Power Input (kW) Cooling (UK) | 0.505 |
| Airflow (m ³ /hour) - Lo-Hi | 800-1000 |
| Noise (dBA) - Lo-Hi | 34-39 |
| Width - mm | 1231 |
| Depth - mm | 1580 |
| Height - mm | 398 |
| Weight - kg | 92 |
| Electrical Supply | 220-240v, 50Hz |
| Phase | Single |
| Mains Cable No. Cores | 3 |
| Running Current (A) - Lo-Hi | 1.73-2.2 |
| Fuse Rating (BS88) - HRC (A) | 6 |

Dimensions

GUF-100RD3



Telephone: 01707 282880

Email: air.conditioning@meuk.mee.com Website: <http://www.mitsubishielectric.co.uk/aircon>

Mitsubishi Electric reserves the right to make any variation in technical specification to the equipment described, or to withdraw or replace products without prior notification or public announcement.

Tel:
Fax:

