

OA Processing unit

GUF-RD, GUF-RDH

CONTENTS

1. Specifications	432
2. Sound Levels	433
3. External Dimension	434
4. Wiring Diagrams	435

1. Specifications

Item		Model	GUF-50RDH	GUF-100RDH	GUF-50RD	GUF-100RD
Power supply			Single phase 220-240V ~50Hz			
Current		A	1.48	2.79	1.48	2.79
Input		W	310-340	600-650	310-340	600-650
Cooling capacity	R407C	kW	5.18<1.82>	10.36<3.58>	5.18<1.82>	10.36<3.58>
	R22	kW	5.45<1.82>	10.90<3.58>	5.45<1.82>	10.90<3.58>
Heating capacity	R407C	kW	5.84<1.98>	11.59<3.90>	5.84<1.98>	11.59<3.90>
	R22	kW	6.15<1.98>	12.20<3.90>	6.15<1.98>	12.20<3.90>
Fan	Type X No.		Supply air : Centrifugal fan [Sirocco fan] X1		Exhaust air : Centrifugal fan [Sirocco fan] X1	
	Air volume	m ³ /h	500	1000	500	1000
		L/S	139	278	139	278
External static pressure	Pa	137	137	137	137	
Noise level (Low-High)		dB(A)	34-35	39-40	34-35	39-40
Humidifying capacity	R407C	kg/h	2.54	5.08	-	-
	R22	kg/h	2.7	5.4	-	-
Cladding			Galvanized steel plate			
Dimensions	Height	mm	398	398	398	398
	Width	mm	1050	1327	1050	1327
	Depth	mm	1560	1714	1560	1714
Weight (drying)		kg	85	135	82	130
Motor		-	Totally enclosed capacitor permanent split-phase induction motor, 4 poles, 2 units			
Air filter	Supply air		Non-woven fabrics filter : Gravitational method 82%+High efficiency filter : Colorimetric method 65%			
	Exhaust air		Non-woven fabrics filter : Gravitational method 82%			
Total heat exchanger (Lossnay element)			Partition, spacing plate-special treated paper			
Direct expansion heat exchanger coil			Aluminum plate fins and copper tubes			
Humidifying			Permeable film humidifier		-	
Refrigerant pipe dimension	Gas	ømm	12.7	15.88	12.7	15.88
	Liquid	ømm	6.35	9.52	6.35	9.52
Drain pipe dimension			VP25			
Capacity equivalent to the indoor unit			P32	P63	P32	P63

Note: ※ The figures in < > indicates the heat recovery at Lossnay element.

※ Cooling/Heating capacity indicates the maximum value at operation under the following condition.

Cooling : Indoor : 27°C DB/19.5°C WB Outdoor : 35°C DB/24°C WB

Heating : Indoor : 21°C DB/14.6°C WB Outdoor : 7°C DB/6°C WB

※ The values given in the table for the noise level reflect the levels measured at a position 1.5 meters immediately below the unit in anechoic chamber.

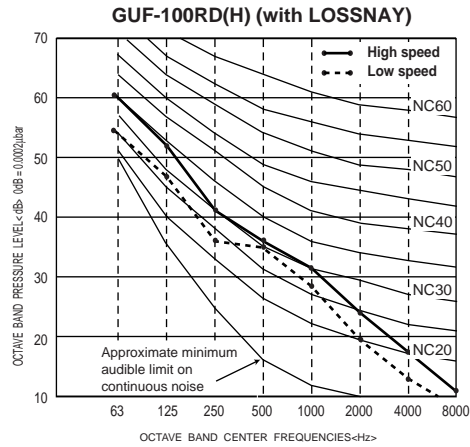
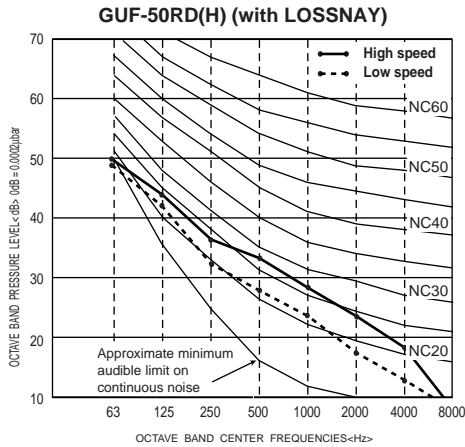
※ The noise at the air outlets (at a 45° angel, 1.5 meters in front) is about 5-6 dB(A) higher than the values given in the table.

※ The above values apply during Lossnay ventilation when the fan speed is set to high speed.

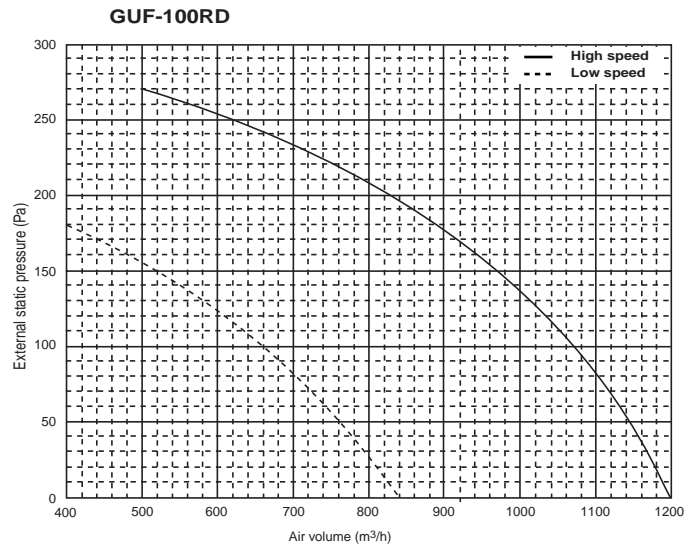
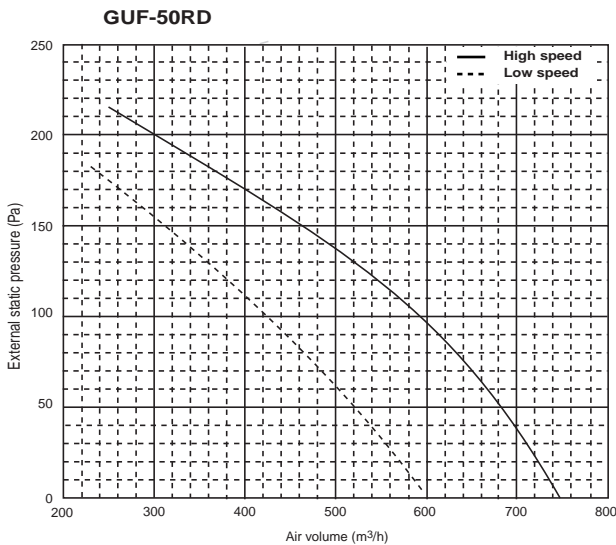
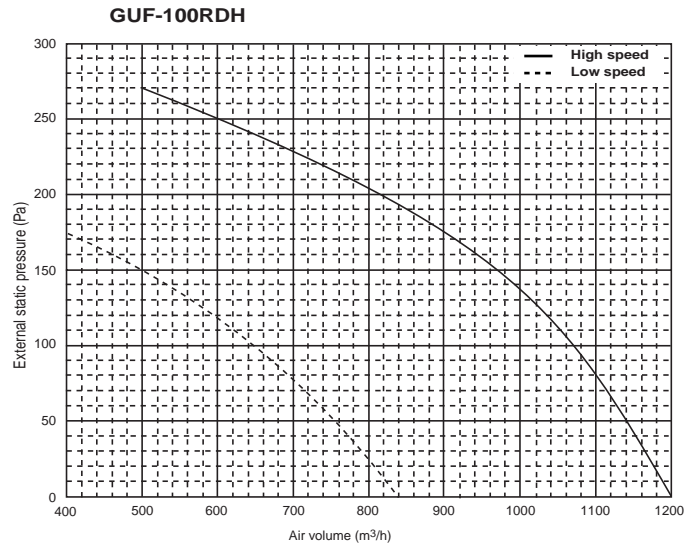
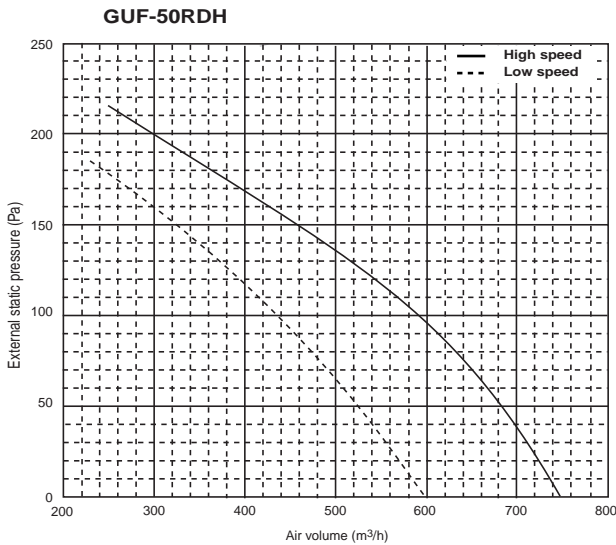
※ Specification may be subject to change without notice.

2. Sound levels

2-1. NC curves



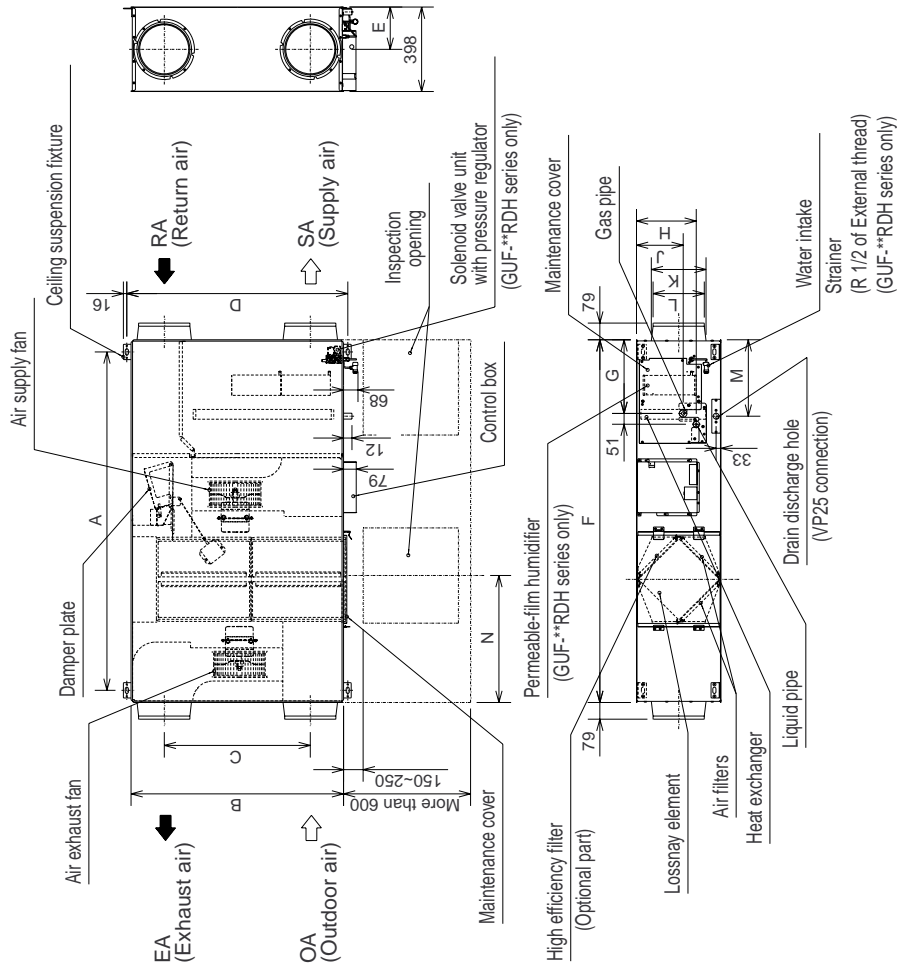
2-2. Fan characteristics curves



3. External dimension

GUF-50, 100RD(H)

Unit : mm



Refrigerant pipe specifications

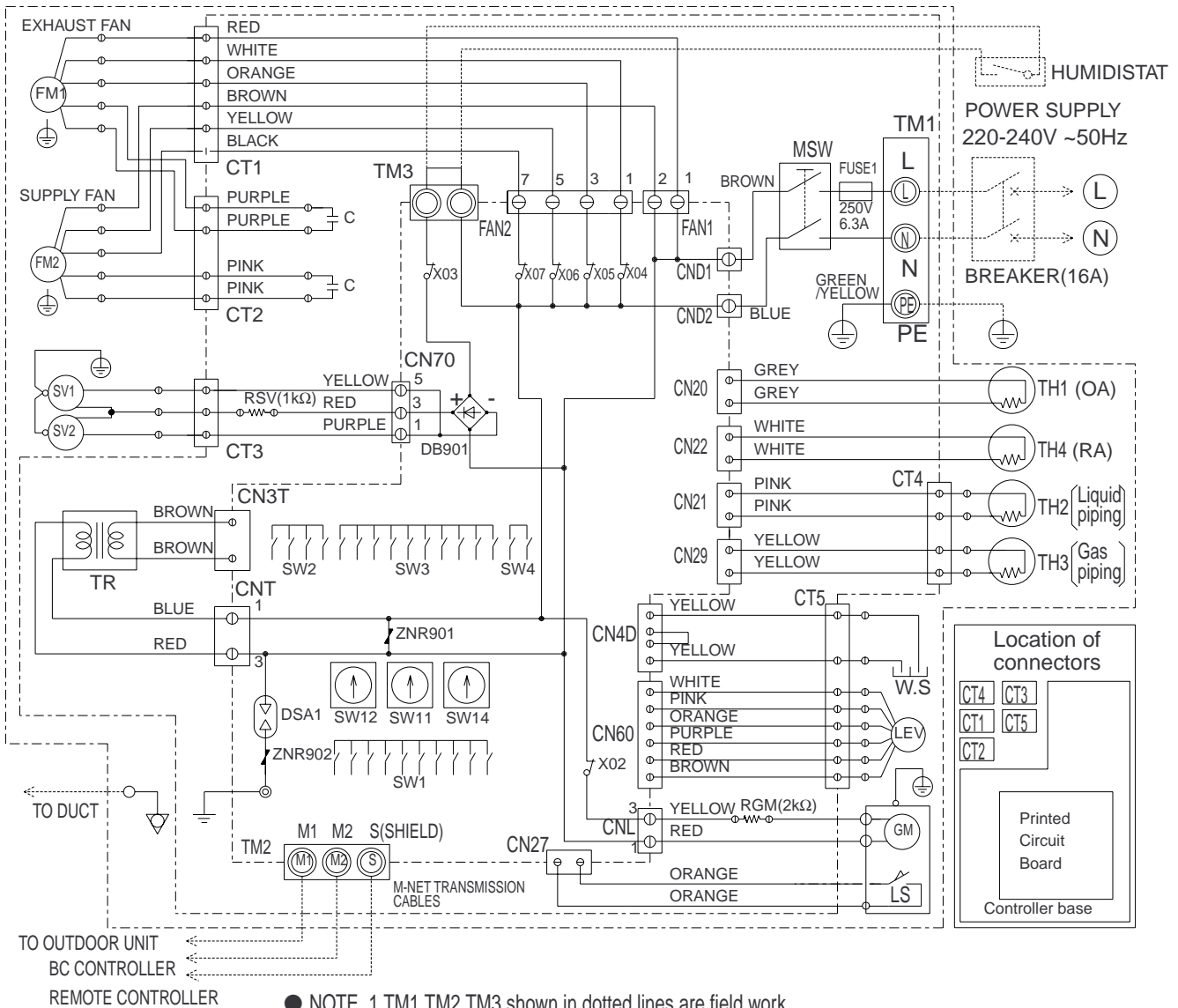
Model	Liquid pipe	Gas pipe
GUF-50RD(H)	Flare φ6.35	Flare φ12.7
GUF-100RD(H)	Flare φ9.52	Flare φ15.88

Unit (mm)

Model	A	B	C	D	E	F	G	H	J	K	L	M	N
GUF-50RD(H)	1470	954	690	993	194	1560	362	282	220	φ208	φ192	365	450
GUF-100RD(H)	1600	1231	920	1271	199	1714	347	283	221	φ258	φ242	365	600

4. Wiring diagrams

GUF-RDH



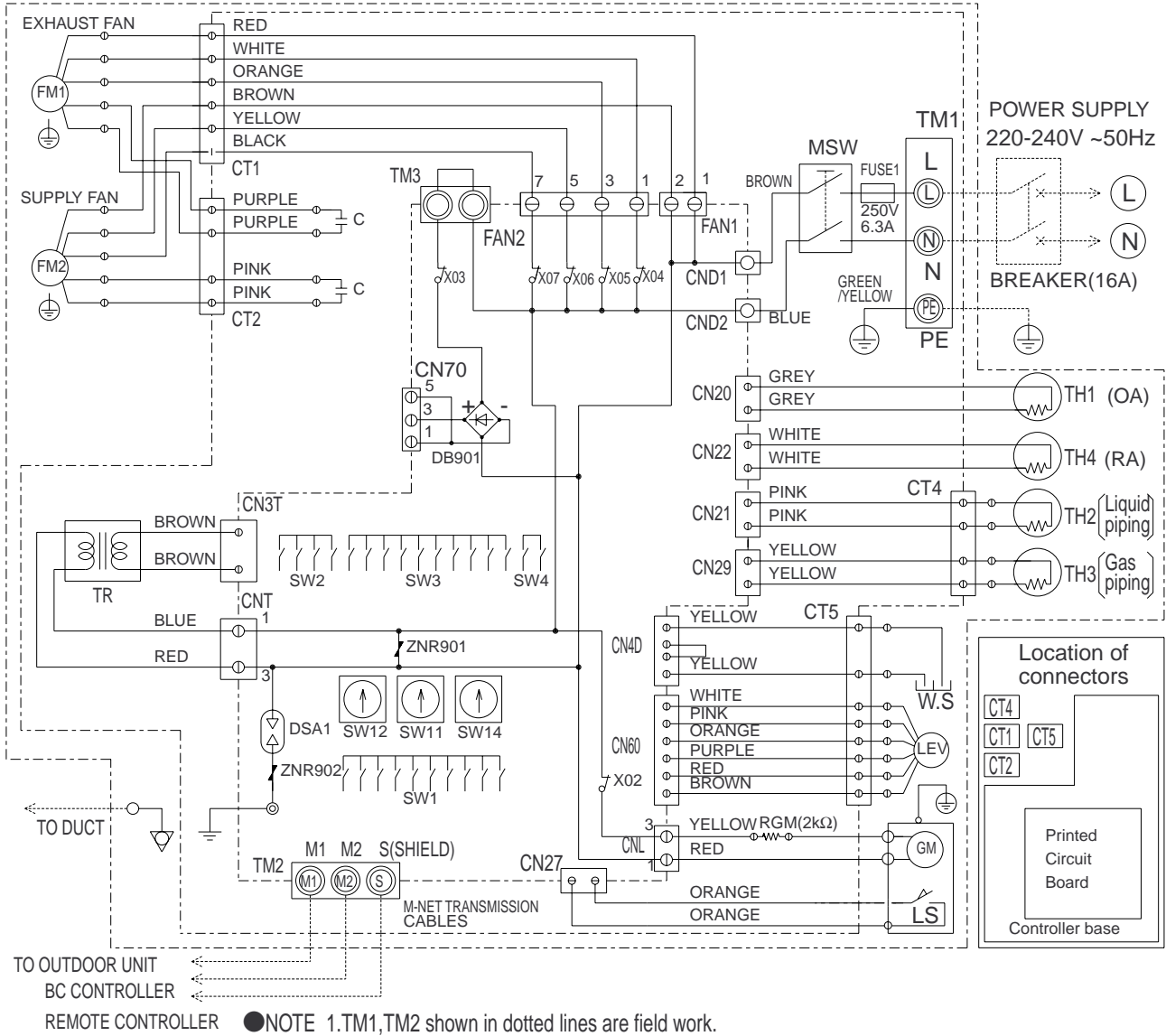
- NOTE 1. TM1, TM2, TM3 shown in dotted lines are field work.
- 2. Be sure to connect the grounding wire.
- 3. MARK ○: indicates terminal block, ⊙: connector
- Ⓜ: board insertion connector or fastening connector of control board.

●SYMBOL EXPLANATION

Symbol	Name	Symbol	Name	Symbol	Name
FM1	Fan motor(exhaust)	TM1	Terminal block(power supply)	MSW	Maintenance power switch
FM2	Fan motor(supply)	TM2	Terminal block(transmission)	M1, M2, S	M-NET transmission terminal
C	Capacitor	TM3	Terminal block(humidistat)	CND1, CND2	Connector(power supply)
W.S	Water sensor	TR	Transformer	CT1	Connector(fan motor)
SV1	Solenoid valve(pressure regulator)	LEV	Electronic linear expansion valve	CT2	Connector(capacitor)
SV2	Solenoid valve(exhaust)	SW1	Switch(function selection)	CT3	Connector(solenoid valve)
GM	Damper motor	SW2	Switch(capacity code setting)	CT4	Connector(thermistor)
LS	Limit switch	SW3	Switch(function selection)	CT5	Connector(LEV)
TH1	Thermistor(outdoor air temp.detection)	SW4	Switch(mode selection)	RSV	Resistance(solenoid valve)
TH2	Thermistor(piping temp.detection/liquid)	SW11	Switch(1st digit address set)	RGM	Resistance(damper motor)
TH3	Thermistor(piping temp.detection/gas)	SW12	Switch(2nd digit address set)	X02-X07	Aux. relay
TH4	Thermistor(room air temp.detection)	SW14	Switch(branch NO.set)		

●WARNING: Before obtaining access to terminal devices, all supply circuits must be disconnected.

GUF-RD



●SYMBOL EXPLANATION

Symbol	Name	Symbol	Name	Symbol	Name
FM1	Fan motor(exhaust)	TM1	Terminal block(power supply)	MSW	Maintenance power switch
FM2	Fan motor(supply)	TM2	Terminal block(transmission)	M1,M2,S	M-NET transmission terminal
C	Capacitor	TR	Transformer	CND1,CND2	Connector(power supply)
W.S	Water sensor	LEV	Electronic linear expansion valve	CT1	Connector(fan motor)
GM	Damper motor	SW1	Switch(function selection)	CT2	Connector(capacitor)
LS	Limit switch	SW2	Switch(capacity code setting)	CT4	Connector(thermistor)
TH1	Thermistor(outdoor air temp.detection)	SW3	Switch(function selection)	CT5	Connector(LEV)
TH2	Thermistor(piping temp.detection/liquid)	SW4	Switch(mode selection)	RGM	Resistance(damper motor)
TH3	Thermistor(piping temp.detection/gas)	SW11	Switch(1st digit address set)	X02-X07	Aux.relay
TH4	Thermistor(room air temp.detection)	SW12	Switch(2nd digit address set)		
		SW14	Switch(branch NO.set)		

●WARNING: Before obtaining access to terminal devices, all supply circuits must be disconnected.