

# CITY MULTI™

## BC controller

CMB-P-V-G,GA,GB

1. SPECIFICATIONS
2. EXTERNAL DIMENSIONS
3. WIRING DIAGRAMS

## CMB-P-V-G CMB-P-V-GA, CMB-P-V-HA CMB-P-V-GB, CMB-P-V-HB

BC

BC-2

BC-11

BC-16

A

B

C

D

E

F

G

H

V<sub>A</sub>

V<sub>B</sub>

**BC**

CT

Model name		CMB-P104V-G		CMB-P105V-G		
Number of branch		4		5		
Power source		1N ~ 220/230/240V				
		50Hz	60Hz	50Hz	60Hz	
Power input	kW	Cooling : 0.067/0.076/0.085 Heating : 0.030/0.034/0.038	Cooling : 0.054/0.061/0.067 Heating : 0.024/0.027/0.030	Cooling : 0.082/0.093/0.104 Heating : 0.038/0.043/0.048	Cooling : 0.066/0.074/0.082 Heating : 0.030/0.034/0.038	
Current	A	Cooling : 0.31/0.34/0.36 Heating : 0.14/0.15/0.16	Cooling : 0.25/0.27/0.28 Heating : 0.11/0.12/0.13	Cooling : 0.38/0.41/0.44 Heating : 0.18/0.19/0.20	Cooling : 0.30/0.33/0.35 Heating : 0.14/0.15/0.16	
External finish		Galvanized steel plate (Lower part drain pan painting N1.5)				
Connectable outdoor unit		PURY-P200/250/300/350YHM-A(-BS) / PQRY-P200/250YGM-A				
Indoor unit capacity connectable to 1 branch	kW	Model P140 or smaller (Use optional joint pipe combining 2 branches when the total capacity exceeds 141.) (Use the reducer (standard accessory) when the indoor unit Model 50 or smaller is connected.)				
External dimension H x W x D		mm(in.) 284 x 648 x 432 (11-3/16" x 25-9/16" x 17-1/16")				
Refrigerant piping diameter	To outdoor unit	Connectable outdoor unit capacity				
		P200	P250/P300	P350		
	High press. pipe	φ15.88 (φ5/8") Brazed	φ19.05 (φ3/4") Brazed	φ19.05 (φ3/4") Brazed		
	Low press. pipe	φ19.05 (φ3/4") Brazed	φ22.2 (φ7/8") Brazed	φ28.58 (φ1-1/8") Brazed		
	To indoor unit	Liquid pipe	φ9.52 (φ3/8") Flare (φ6.35 (φ1/4") with attached reducer used, φ12.7 (φ1/2") with optional joint pipe used.)			
		Gas pipe	φ15.88 (φ5/8") Flare (φ12.7 (φ1/2") with attached reducer used, φ19.05 (φ3/4") with optional joint pipe used.)			
Field drain pipe size		O.D. 32mm (1-1/4")				
Net weight	kg(lb)	24 (53)		27 (60)		
Accessories		·Drain Connection pipe (with flexible hose and insulation) ·Reducer				
Note: *1. Installation/foundation work, electrical connection work, duct work, insulation work, power source switch, and other items shall be referred to the Installation Manual. *2. The equipment is for R410A refrigerant. *3. Install this product in a location where noise (refrigerant noise) emitted by the unit will not disturb the neighbors. (For use in quiet environments with low background noise, position the BC CONTROLLER at least 5m away from any indoor units.) *4. Indoor units P100,P125,P140 can be connected to 1 branch. (In this case, cooling capacity decrease a little.)						

Ref.: M-WYNCO-6883&amp;6884

Model name		CMB-P106V-G		CMB-P108V-G	
Number of branch		6		8	
Power source		1N ~ 220/230/240V			
		50Hz	60Hz	50Hz	60Hz
Power input	kW	Cooling : 0.097/0.110/0.123 Heating : 0.045/0.051/0.057	Cooling : 0.078/0.088/0.097 Heating : 0.036/0.041/0.045	Cooling : 0.127/0.144/0.161 Heating : 0.060/0.068/0.076	Cooling : 0.102/0.115/0.127 Heating : 0.048/0.054/0.060
Current	A	Cooling : 0.45/0.48/0.52 Heating : 0.21/0.23/0.24	Cooling : 0.36/0.39/0.41 Heating : 0.17/0.18/0.19	Cooling : 0.58/0.63/0.68 Heating : 0.28/0.30/0.32	Cooling : 0.47/0.50/0.53 Heating : 0.22/0.24/0.25
External finish		Galvanized steel plate (Lower part drain pan painting N1.5)			
Connectable outdoor unit		PURY-P200/250/300/350YHM-A(-BS) / PQRV-P200/250YGM-A			
Indoor unit capacity connectable to 1 branch	kW	Model P140 or smaller (Use optional joint pipe combining 2 branches when the total capacity exceeds 141.) (Use the reducer (standard accessory) when the indoor unit Model 50 or smaller is connected.)			
External dimension H x W x D	mm(in.)	284 x 648 x 432 (11-3/16" x 25-9/16" x 17-1/16")			
Refrigerant piping diameter	To outdoor unit	Connectable outdoor unit capacity			
			P200	P250/P300	P350
	High press. pipe	φ15.88 (φ5/8") Brazed	φ19.05 (φ3/4") Brazed	φ19.05 (φ3/4") Brazed	
	Low press. pipe	φ19.05 (φ3/4") Brazed	φ22.2 (φ7/8") Brazed	φ28.58 (φ1-1/8") Brazed	
	To indoor unit	Liquid pipe	φ9.52 (φ3/8") Flare (φ6.35 (φ1/4") with attached reducer used, φ12.7 (φ1/2") with optional joint pipe used.)		
Gas pipe		φ15.88 (φ5/8") Flare (φ12.7 (φ1/2") with attached reducer used, φ19.05 (φ3/4") with optional joint pipe used.)			
Field drain pipe size		O.D. 32mm (1-1/4")			
Net weight	kg(lb)	29 (64)		34 (75)	
Accessories		·Drain Connection pipe (with flexible hose and insulation) ·Reducer			
<p>Note: *1. Installation/foundation work, electrical connection work, duct work, insulation work, power source switch, and other items shall be referred to the Installation Manual.</p> <p>*2. The equipment is for R410A refrigerant.</p> <p>*3. Install this product in a location where noise (refrigerant noise) emitted by the unit will not disturb the neighbors. (For use in quiet environments with low background noise, position the BC CONTROLLER at least 5m away from any indoor units.)</p> <p>*4. Indoor units P100,P125,P140 can be connected to 1 branch. (In this case, cooling capacity decrease a little.)</p>					

Ref.: M-WYNCO-6885&amp;6886

Model name		CMB-P1010V-G		CMB-P1013V-G		
Number of branch		10		13		
Power source		1N ~ 220/230/240V				
		50Hz	60Hz	50Hz	60Hz	
Power input	kW	Cooling : 0.156/0.177/0.198 Heating : 0.075/0.085/0.095	Cooling : 0.126/0.141/0.156 Heating : 0.060/0.068/0.075	Cooling : 0.201/0.228/0.255 Heating : 0.097/0.110/0.123	Cooling : 0.162/0.182/0.201 Heating : 0.078/0.088/0.097	
Current	A	Cooling : 0.71/0.77/0.83 Heating : 0.35/0.37/0.40	Cooling : 0.58/0.62/0.65 Heating : 0.28/0.30/0.32	Cooling : 0.92/1.00/1.07 Heating : 0.45/0.48/0.52	Cooling : 0.74/0.80/0.84 Heating : 0.36/0.39/0.41	
External finish		Galvanized steel plate (Lower part drain pan painting N1.5)				
Connectable outdoor unit		PURY-P200/250/300/350YHM-A(-BS) / PQRY-P200/250YGM-A				
Indoor unit capacity connectable to 1 branch	kW	Model P140 or smaller (Use optional joint pipe combining 2 branches when the total capacity exceeds 141.) (Use the reducer (standard accessory) when the indoor unit Model 50 or smaller is connected.)				
External dimension H x W x D		mm(in.) 284 x 648 x 432 (11-3/16" x 25-9/16" x 17-1/16")		284 x 1,098 x 432 (11-3/16" x 43-1/4" x 17-1/16")		
Refrigerant piping diameter	To outdoor unit	Connectable outdoor unit capacity				
			P200	P250/P300	P350	
	High press. pipe	φ15.88 (φ5/8") Brazed	φ19.05 (φ3/4") Brazed	φ19.05 (φ3/4") Brazed		
	Low press. pipe	φ19.05 (φ3/4") Brazed	φ22.2 (φ7/8") Brazed	φ28.58 (φ1-1/8") Brazed		
	To indoor unit	Liquid pipe	φ9.52 (φ3/8") Flare (φ6.35 (φ1/4") with attached reducer used, φ12.7 (φ1/2") with optional joint pipe used.)			
		Gas pipe	φ15.88 (φ5/8") Flare (φ12.7 (φ1/2") with attached reducer used, φ19.05 (φ3/4") with optional joint pipe used.)			
Field drain pipe size		O.D. 32mm (1-1/4")				
Net weight	kg(lb)	39 (86)		47 (104)		
Accessories		·Drain Connection pipe (with flexible hose and insulation) ·Reducer				
Note: *1. Installation/foundation work, electrical connection work, duct work, insulation work, power source switch, and other items shall be referred to the Installation Manual. *2. The equipment is for R410A refrigerant. *3. Install this product in a location where noise (refrigerant noise) emitted by the unit will not disturb the neighbors. (For use in quiet environments with low background noise, position the BC CONTROLLER at least 5m away from any indoor units.) *4. Indoor units P100,P125,P140 can be connected to 1 branch. (In this case, cooling capacity decrease a little.)						

Ref.: M-WYNCO-6887&amp;6888

<b>Model name</b>		<b>CMB-P1016V-G</b>		
Number of branch		16		
Power source		1N ~ 220/230/240V		
		50Hz	60Hz	
Power input	kW	Cooling : 0.246/0.279/0.312 Heating : 0.119/0.135/0.151	Cooling : 0.198/0.222/0.246 Heating : 0.096/0.108/0.119	
Current	A	Cooling : 1.12/1.22/1.30 Heating : 0.55/0.59/0.63	Cooling : 0.90/0.97/1.03 Heating : 0.44/0.47/0.50	
External finish		Galvanized steel plate (Lower part drain pan painting N1.5)		
Connectable outdoor unit		PURY-P200/250/300/350YHM-A(-BS) / PQRV-P200/250YGM-A		
Indoor unit capacity connectable to 1 branch		Model P140 or smaller (Use optional joint pipe combining 2 branches when the total capacity exceeds 141.) (Use the reducer (standard accessory) when the indoor unit Model 50 or smaller is connected.)		
External dimension H x W x D		mm(in.) 284 x 1,098 x 432 (11-3/16" x 43-1/4" x 17-1/16")		
Refrigerant piping diameter	To outdoor unit	Connectable outdoor unit capacity		
		P200	P250/P300	P350
	High press. pipe	$\phi$ 15.88 ( $\phi$ 5/8") Brazed	$\phi$ 19.05 ( $\phi$ 3/4") Brazed	$\phi$ 19.05 ( $\phi$ 3/4") Brazed
	Low press. pipe	$\phi$ 19.05 ( $\phi$ 3/4") Brazed	$\phi$ 22.2 ( $\phi$ 7/8") Brazed	$\phi$ 28.58 ( $\phi$ 1-1/8") Brazed
	To indoor unit	Liquid pipe	$\phi$ 9.52 ( $\phi$ 3/8") Flare ( $\phi$ 6.35 ( $\phi$ 1/4") with attached reducer used, $\phi$ 12.7 ( $\phi$ 1/2") with optional joint pipe used.)	
Gas pipe	$\phi$ 15.88 ( $\phi$ 5/8") Flare ( $\phi$ 12.7 ( $\phi$ 1/2") with attached reducer used, $\phi$ 19.05 ( $\phi$ 3/4") with optional joint pipe used.)			
Field drain pipe size		O.D. 32mm (1-1/4")		
Net weight	kg(lb)	54 (120)		
Accessories		·Drain Connection pipe (with flexible hose and insulation) ·Reducer		
<p>Note: *1. Installation/foundation work, electrical connection work, duct work, insulation work, power source switch, and other items shall be referred to the Installation Manual.</p> <p>*2. The equipment is for R410A refrigerant.</p> <p>*3. Install this product in a location where noise (refrigerant noise) emitted by the unit will not disturb the neighbors. (For use in quiet environments with low background noise, position the BC CONTROLLER at least 5m away from any indoor units.)</p> <p>*4. Indoor units P100,P125,P140 can be connected to 1 branch. (In this case, cooling capacity decrease a little.)</p>				

Ref.: M-WYNCO-6889

Model name		CMB-P108V-GA		CMB-P1010V-GA			
Number of branch		8		10			
Power source		1N ~ 220/230/240V					
		50Hz	60Hz	50Hz	60Hz		
Power input	kW	Cooling : 0.127/0.144/0.161 Heating : 0.060/0.068/0.076	Cooling : 0.102/0.115/0.127 Heating : 0.048/0.054/0.060	Cooling : 0.156/0.177/0.198 Heating : 0.075/0.085/0.095	Cooling : 0.126/0.141/0.156 Heating : 0.060/0.068/0.075		
Current	A	Cooling : 0.58/0.63/0.68 Heating : 0.28/0.30/0.32	Cooling : 0.47/0.50/0.53 Heating : 0.22/0.24/0.25	Cooling : 0.71/0.77/0.83 Heating : 0.35/0.37/0.40	Cooling : 0.58/0.62/0.65 Heating : 0.28/0.30/0.32		
External finish		Galvanized steel plate (Lower part drain pan painting N1.5)					
Connectable outdoor unit		PURY-P200/250/300/350/400/450/500/550/600/650Y(S)HM-A(-BS) / PQRY-P200/250/400/500YGM-A					
Indoor unit capacity connectable to 1 branch		Model P140 or smaller (Use optional joint pipe combining 2 branches when the total capacity exceeds 141.) (Use the reducer (standard accessory) when the indoor unit Model 50 or smaller is connected.)					
External dimension H x W x D		mm(in.) 289 x1,110 x 520 (11-7/16" x 43-3/4" x 20-1/2")					
Refrigerant piping diameter	To outdoor unit	Connectable outdoor unit capacity					
			P200	P250/P300	P350	P400 - P500	P550~P650
		High press. pipe	φ15.88 (φ5/8") Brazed	φ19.05 (φ3/4") Brazed	φ19.05 (φ3/4") Brazed	φ22.2 (φ7/8") Brazed	φ28.58 (φ1-1/8") Brazed
	Low press. pipe	φ19.05 (φ3/4") Brazed	φ22.2 (φ7/8") Brazed	φ28.58 (φ1-1/8") Brazed	φ28.58 (φ1-1/8") Brazed	φ28.58 (φ1-1/8") Brazed	
	To indoor unit	Liquid pipe	φ9.52 (φ3/8") Flare (φ6.35 (φ1/4") with attached reducer used, φ12.7 (φ1/2") with optional joint pipe used.)				
		Gas pipe	φ15.88 (φ5/8") Flare (φ12.7 (φ1/2") with attached reducer used, φ19.05 (φ3/4") with optional joint pipe used.)				
	To other BC controller	Total indoor unit capacity connected to this Sub BC controller					
			~P200	P201~P300	P301~P350		
		High press. pipe	φ15.88 (φ5/8") Brazed	φ19.05 (φ3/4") Brazed	φ19.05 (φ3/4") Brazed		
		Low press. pipe	φ19.05 (φ3/4") Brazed	φ22.2 (φ7/8") Brazed	φ28.58 (φ1-1/8") Brazed		
	Liquid pipe	φ9.52 (φ3/8") Brazed	φ9.52 (φ3/8") Brazed	φ12.7 (φ1/2") Brazed			
Field drain pipe size		O.D. 32mm (1-1/4")					
Net weight	kg(lb)	44 (98)		49 (109)			
Accessories		·Drain Connection pipe (with flexible hose and insulation) ·Reducer					
Note: *1. Installation/foundation work, electrical connection work, duct work, insulation work, power source switch, and other items shall be referred to the Installation Manual. *2. The equipment is for R410A refrigerant. *3. Install this product in a location where noise (refrigerant noise) emitted by the unit will not disturb the neighbors. (For use in quiet environments with low background noise, position the BC CONTROLLER at least 5m away from any indoor units.) *4. Indoor units P100,P125,P140 can be connected to 1 branch. (In this case, cooling capacity decrease a little.)							

Ref.: M-WYNCO-6890&amp;6891

Model name		CMB-P1013V-GA		CMB-P1016V-GA			
Number of branch		13		16			
Power source		1N ~ 220/230/240V					
		50Hz	60Hz	50Hz	60Hz		
Power input	kW	Cooling : 0.201/0.228/0.255 Heating : 0.097/0.110/0.123	Cooling : 0.162/0.182/0.201 Heating : 0.078/0.088/0.097	Cooling : 0.246/0.279/0.312 Heating : 0.119/0.135/0.151	Cooling : 0.198/0.222/0.246 Heating : 0.096/0.108/0.119		
Current	A	Cooling : 0.92/1.00/1.07 Heating : 0.45/0.48/0.52	Cooling : 0.74/0.80/0.84 Heating : 0.36/0.39/0.41	Cooling : 1.12/1.22/1.30 Heating : 0.55/0.59/0.63	Cooling : 0.90/0.97/1.03 Heating : 0.44/0.47/0.50		
External finish		Galvanized steel plate (Lower part drain pan painting N1.5)					
Connectable outdoor unit		PURY-P200/250/300/350/400/450/500/550/600/650Y(S)HM-A(-BS) / PQRV-P200/250/400/500YGM-A					
Indoor unit capacity connectable to 1 branch	kW	Model P140 or smaller (Use optional joint pipe combining 2 branches when the total capacity exceeds 141.) (Use the reducer (standard accessory) when the indoor unit Model 50 or smaller is connected.)					
External dimension H x W x D	mm(in.)	289 x 1,110 x 520 (11-7/16" x 43-3/4" x 20-1/2")					
Refrigerant piping diameter	To outdoor unit	Connectable outdoor unit capacity					
			P200	P250/P300	P350	P400 - P500	P550~P650
		High press. pipe	φ15.88 (φ5/8") Brazed	φ19.05 (φ3/4") Brazed	φ19.05 (φ3/4") Brazed	φ22.2 (φ7/8") Brazed	φ28.58 (φ1-1/8") Brazed
		Low press. pipe	φ19.05 (φ3/4") Brazed	φ22.2 (φ7/8") Brazed	φ28.58 (φ1-1/8") Brazed	φ28.58 (φ1-1/8") Brazed	φ28.58 (φ1-1/8") Brazed
	To indoor unit	Liquid pipe	φ9.52 (φ3/8") Flare (φ6.35 (φ1/4") with attached reducer used, φ12.7 (φ1/2") with optional joint pipe used.)				
		Gas pipe	φ15.88 (φ5/8") Flare (φ12.7 (φ1/2") with attached reducer used, φ19.05 (φ3/4") with optional joint pipe used.)				
	To other BC controller	Total indoor unit capacity connected to this Sub BC controller					
			~P200	P201~P300	P301~P350		
			High press. pipe	φ15.88 (φ5/8") Brazed	φ19.05 (φ3/4") Brazed	φ19.05 (φ3/4") Brazed	
			Low press. pipe	φ19.05 (φ3/4") Brazed	φ22.2 (φ7/8") Brazed	φ28.58 (φ1-1/8") Brazed	
	Liquid pipe	φ9.52 (φ3/8") Brazed	φ9.52 (φ3/8") Brazed	φ12.7 (φ1/2") Brazed			
Field drain pipe size		O.D. 32mm (1-1/4")					
Net weight	kg(lb)	57 (126)		64 (142)			
Accessories		·Drain Connection pipe (with flexible hose and insulation) ·Reducer					
Note: *1. Installation/foundation work, electrical connection work, duct work, insulation work, power source switch, and other items shall be referred to the Installation Manual. *2. The equipment is for R410A refrigerant. *3. Install this product in a location where noise (refrigerant noise) emitted by the unit will not disturb the neighbors. (For use in quiet environments with low background noise, position the BC CONTROLLER at least 5m away from any indoor units.) *4. Indoor units P100,P125,P140 can be connected to 1 branch. (In this case, cooling capacity decrease a little.)							

Ref.: M-WYNCO-6892&amp;6893

<b>Model name</b>		<b>CMB-P1016V-HA</b>					
Number of branch		16					
Power source		1N ~ 220/230/240V					
		50Hz		60Hz			
Power input	kW	Cooling :0.246/0.279/0.312 Heating : 0.119/0.135/0.151		Cooling : 0.198/0.222/0.246 Heating : 0.096/0.108/0.119			
Current	A	Cooling : 1.12/1.22/1.30 Heating : 0.55/0.59/0.63		Cooling : 0.90/0.97/1.03 Heating : 0.44/0.47/0.50			
External finish		Galvanized steel plate (Lower part drain pan painting N1.5)					
Connectable outdoor unit		PURY-P700/750/800YSHM-A(-BS)					
Indoor unit capacity connectable to 1 branch		kW Model P140 or smaller (Use optional joint pipe combining 2 branches when the total capacity exceeds 141.) (Use the reducer (standard accessory) when the indoor unit Model 50 or smaller is connected.)					
External dimension H x W x D		mm(in.) 289 x1,110 x 520 (11-7/16" x 43-3/4" x 20-1/2")					
Refrigerant piping diameter	To outdoor unit	Connectable outdoor unit capacity					
		P700/P750/P800					
		High press. pipe	φ28.58(φ1-1/8") Brazed				
		Low press. pipe	φ34.93 (φ1-3/8") Brazed				
	To indoor unit	Liquid pipe	φ9.52 (φ3/8") Flare (φ6.35 (φ1/4") with attached reducer used,)				
		Gas pipe	φ15.88 (φ5/8") Flare (φ12.7 (φ1/2") with attached reducer used, φ19.05 (φ3/4"), φ22.2 (φ7/8")with optional joint pipe used.)				
	To other BC controller	Total indoor unit capacity connected to this Sub BC controller					
			~P200	P201~P300	P301~P350	P351~P400	P401~P450
		High press. pipe	φ15.88 (φ5/8") Brazed	φ19.05 (φ3/4") Brazed		φ22.2 (φ7/8") Brazed	
		Low press. pipe	φ19.05 (φ3/4") Brazed	φ22.2 (φ7/8") Brazed	φ28.58 (φ1-1/8") Brazed		
	Liquid pipe	φ9.52 (φ3/8") Brazed		φ12.7 (φ1/2") Brazed		φ15.88 (φ5/8") Brazed	
Drain pipe		O.D. 32mm (1-1/4")					
Net weight	kg(lb)	73 (161)					
Accessories		·Drain Connection pipe (with flexible hose and insulation) ·Reducer					
<p>Note: *1. Works Not Included: Installation/foundation work, electrical connection work, insulation work, power source switch, and other items are not specified in this specifications.</p> <p>*2. The equipment is for R410A refrigerant.</p> <p>*3. When using an outdoor unit –28HP(P700) or more, use this product.</p> <p>*4. Install this product in a location where noise (refrigerant noise) emitted by the unit will not disturb the neighbors. (For use in quiet environments with low background noise, position the BC CONTROLLER at least 5m away from any indoor units.)</p> <p>*5. Indoor units P100,P125,P140 can be connected to 1 branch. (In this case, cooling capacity decrease a little.)</p>							

Ref.: M-WYNCO-9168



Model name		CMB-P104V-GB		CMB-P108V-GB		
Number of branch		4		8		
Power source		1N ~ 220/230/240V				
		50Hz	60Hz	50Hz	60Hz	
Power input	kW	Cooling : 0.060/0.068/0.076 Heating : 0.030/0.034/0.038	Cooling : 0.048/0.054/0.060 Heating : 0.024/0.027/0.030	Cooling : 0.119/0.135/0.151 Heating : 0.060/0.068/0.076	Cooling : 0.096/0.108/0.119 Heating : 0.048/0.054/0.060	
Current	A	Cooling : 0.28/0.30/0.32 Heating : 0.14/0.15/0.16	Cooling : 0.22/0.24/0.25 Heating : 0.11/0.12/0.13	Cooling : 0.55/0.59/0.63 Heating : 0.28/0.30/0.32	Cooling : 0.44/0.47/0.50 Heating : 0.22/0.24/0.25	
External finish		Galvanized steel plate (Lower part drain pan painting N1.5)				
Connectable BC controller		Main BC	CMB-P108/1010/1013/1016V-GA, CMB-P1016V-HA			
		Sub BC	CMB-P104/108V-GB, CMB-P1016V-HB			
Indoor unit capacity connectable to 1 branch		kW Model P140 or smaller (Use optional joint pipe combining 2 branches when the total capacity exceeds 141.) (Use the reducer (standard accessory) when the indoor unit Model 50 or smaller is connected.)				
External dimension H x W x D		mm(in.) 284 x 648 x 432 (11-3/16" x 25-9/16" x 17-1/16")				
Refrigerant piping diameter		Total indoor unit capacity connected to this Sub BC controller				
		~P200		P201~P300	P301~P350	
		To Main BC controller	High press. pipe	φ15.88 (φ5/8") Brazed	φ19.05 (φ3/4") Brazed	φ19.05 (φ3/4") Brazed
			Low press. pipe	φ19.05 (φ3/4") Brazed	φ22.2 (φ7/8") Brazed	φ28.58 (φ1-1/8") Brazed
			Liquid pipe	φ9.52 (φ3/8") Brazed	φ9.52 (φ3/8") Brazed	φ12.7 (φ1/2") Brazed
		To indoor unit	Liquid pipe	φ9.52 (φ3/8") Flare (φ6.35 (φ1/4") with attached reducer used, φ12.7 (φ1/2") with optional joint pipe used.)		
Gas pipe	φ15.88 (φ5/8") Flare (φ12.7 (φ1/2") with attached reducer used, φ19.05 (φ3/4") with optional joint pipe used.)					
Field drain pipe size		O.D. 32mm (1-1/4")				
Net weight	kg(lb)	22 (49)		32 (71)		
Accessories		·Drain Connection pipe (with flexible hose and insulation) ·Reducer				
<p>Note: *1. Installation/foundation work, electrical connection work, duct work, insulation work, power source switch, and other items shall be referred to the Installation Manual.</p> <p>*2. The equipment is for R410A refrigerant.</p> <p>*3. For sub BC controller CMB-P-V-GB the connectable indoor unit capacities may sum to equal that of a P350 unit or less. However, if two sub controllers are used the TOTAL sum of connectable units connected to BOTH sub controllers must also not exceed that of a P350 unit.</p> <p>*4. Can't use singleness.(MAIN BC CONTROLLER is necessary)</p> <p>*5. Install this product in a location where noise (refrigerant noise) emitted by the unit will not disturb the neighbors. (For use in quiet environments with low background noise, position the BC CONTROLLER at least 5m away from any indoor units.)</p> <p>*6. Indoor units P100,P125,P140 can be connected to 1 branch. (In this case, cooling capacity decrease a little.)</p>						

Ref.: M-WYNCO-6894&amp;6895

<b>Model name</b>		<b>CMB-P1016V-HB</b>						
Number of branch		16						
Power source		1N ~ 220/230/240V						
		50Hz		60Hz				
Power input	kW	Cooling : 0.237/0.269/0.301 Heating : 0.119/0.135/0.151		Cooling : 0.192/0.216/0.237 Heating : 0.096/0.108/0.120				
Current	A	Cooling : 1.08/1.17/1.26 Heating : 0.55/0.59/0.63		Cooling : 0.88/0.94/0.99 Heating : 0.44/0.47/0.50				
External finish		Galvanized steel plate (Lower part drain pan painting N1.5)						
Connectable BC controller		Main BC	CMB-P108/1010/1013/1016V-GA, CMB-P1016V-HA					
		Sub BC	CMB-P104/108V-GB, CMB-P1016V-HB					
Indoor unit capacity connectable to 1 branch		kW	Model P140 or smaller (Use optional joint pipe combining 2 branches when the total capacity exceeds 141.) (Use the reducer (standard accessory) when the indoor unit Model 50 or smaller is connected.)					
External dimension H x W x D		mm(in.)	284 x 1,098 x 432 (11-3/16" x 43-4/16" x 17-1/16")					
Refrigerant piping diameter		Total indoor unit capacity connected to this Sub BC controller						
				~P200	P201~P300	P301~P350	P351~P400	P401~P450
		To Main BC controller	High press. pipe	φ15.88 (φ5/8") Brazed	φ19.05 (φ3/4") Brazed		φ22.2 (φ7/8") Brazed	
			Low press. pipe	φ19.05 (φ3/4") Brazed	φ22.2 (φ7/8") Brazed	φ28.58 (φ1-1/8") Brazed		
		Liquid pipe		φ9.52 (φ3/8") Brazed		φ12.7 (φ1/2") Brazed		φ15.88 (φ5/8") Brazed
		To indoor unit	Liquid pipe	φ9.52 (φ3/8") Flare (φ6.35 (φ1/4") with attached reducer used.)				
Gas pipe	φ15.88 (φ5/8") Flare (φ12.7 (φ1/2") with attached reducer used, φ19.05 (φ3/4"), φ22.2 (φ7/8") with optional joint pipe used.)							
Drain pipe		O.D. 32mm (1-1/4")						
Net weight	kg(lb)	57 (126)						
Accessories		·Drain Connection pipe (with flexible hose and insulation) ·Reducer						
<p>Note: *1. Works Not Included: Installation/foundation work, electrical connection work, insulation work, power source switch, and other items are not specified in this specifications.</p> <p>*2. The equipment is for R410A refrigerant.</p> <p>*3. For sub BC controller CMB-P1016V-HB the connectable indoor unit capacities may sum to equal that of a P350 unit or less. However, if two sub controllers are used the TOTAL sum of connectable units connected to BOTH sub controllers must also not exceed that of a P450 unit.</p> <p>*4. Can't use singleness.(MAIN BC CONTROLLER is necessary)</p> <p>*5. Install this product in a location where noise (refrigerant noise) emitted by the unit will not disturb the neighbors. (For use in quiet environments with low background noise, position the BC CONTROLLER at least 5m away from any indoor units.)</p> <p>*6. Indoor units P100,P125,P140 can be connected to 1 branch. (In this case, cooling capacity decrease a little.)</p>								

Ref.: M-WYNCO-9169



## CMB-P108,1010,1013,1016V-GA

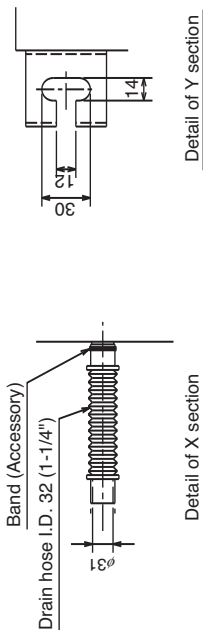
Draw. : cmb-p108-1016v-gA-W656-838A

Unit : mm

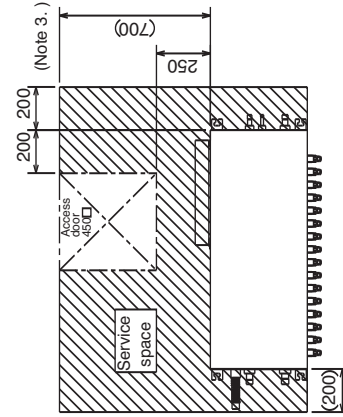
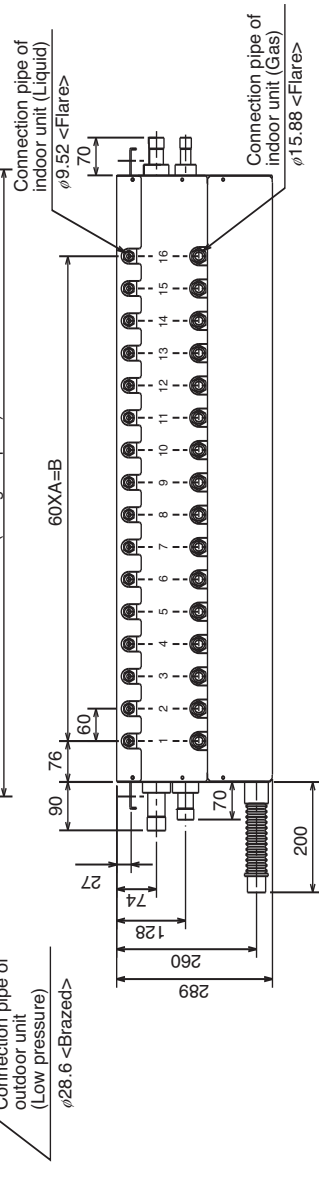
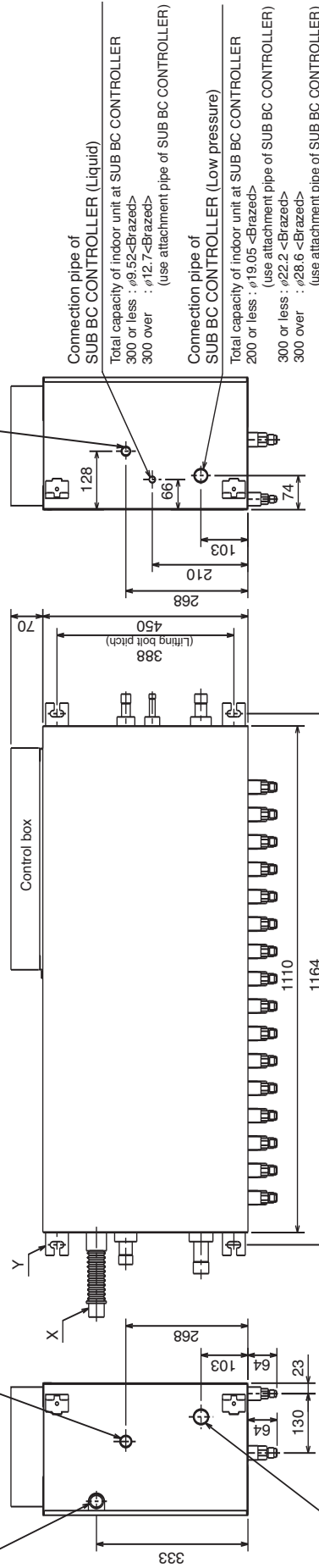
- <Accessories>
- Refrigerant<High pressure>conn. pipe ..... 2pcs
  - Reducer(Large Small) ..... Quantity for all connections
  - Drain hose I.D. 32 (1-1/4") ..... 1pc.
  - Hose band ..... 1pc.
  - Tie band ..... 1pc.

Note1. Suspension bolt(φ10), washer(M10), and nut(M10) prepare in the field.  
 2. Take notice of service space as follows.  
 (Please give attention not to occupy service space by letting ducts and pipes through.)  
 3. Please take space to connect SUB BC CONTROLLER.

	A	B
CMB-P108V-GA	7	420
CMB-P1010V-GA	9	540
CMB-P1013V-GA	12	720
CMB-P1016V-GA	15	900



Connection pipe of outdoor unit (High pressure)  
 PURY-P350 : φ19.05 <Brazed> (use attachment pipe)  
 PURY-P400, P450, P500 : φ22.2 <Brazed>  
 PURY-P550, P600, P650 : φ28.6 <Brazed> (use attachment pipe)



## CMB-P1016V-HA

Draw. : cmb-p1016v-ha-WKB94-G932

Unit : mm

- <Accessories>
- Refrigerant<Low pressure> conn. pipe.....1pc.
  - Reducer<Large,Small>.....Quantity for all connections
  - Drain hose<VP-25 connection>.....1pc.
  - Hose band.....1pc.
  - Tie band.....1pc.

- Connection pipe of SUB BC CONTROLLER (High pressure)
- Total capacity of indoor unit at SUB BC CONTROLLER  
 200 or less:  $\phi 9.52$ -Brazed (use attachment pipe)  
 350 or less:  $\phi 19.05$ -Brazed (use attachment pipe)  
 350 over:  $\phi 22.2$ -Brazed (use attachment pipe of JOINT <option>)
- Connection pipe of SUB BC CONTROLLER (Liquid)
- Total capacity of indoor unit at SUB BC CONTROLLER  
 300 or less:  $\phi 9.52$ -Brazed  
 400 or less:  $\phi 12.7$ -Brazed (use attachment pipe of SUB BC CONTROLLER)  
 400 over:  $\phi 15.88$ -Brazed (use attachment pipe of JOINT <option>)
- Connection pipe of SUB BC CONTROLLER (Low pressure)
- Total capacity of indoor unit at SUB BC CONTROLLER  
 200 or less:  $\phi 19.05$ -Brazed (use attachment pipe of SUB BC CONTROLLER)  
 300 or less:  $\phi 22.2$ -Brazed  
 300 over:  $\phi 28.58$ -Brazed (use attachment pipe of SUB BC CONTROLLER)

Note 1. Suspension bolt( $\phi 10$ ), washer(M10), and nut(M10) prepare in the field.

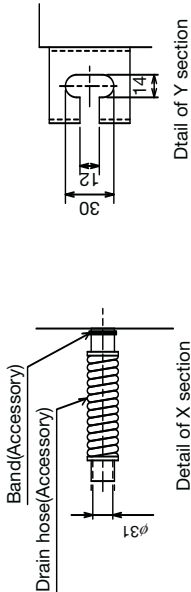
2. Take notice of service space as follows.

(Please give attention not to occupy service space by letting ducts and pipes through.)

3. Please take space to connect SUB BC CONTROLLER.

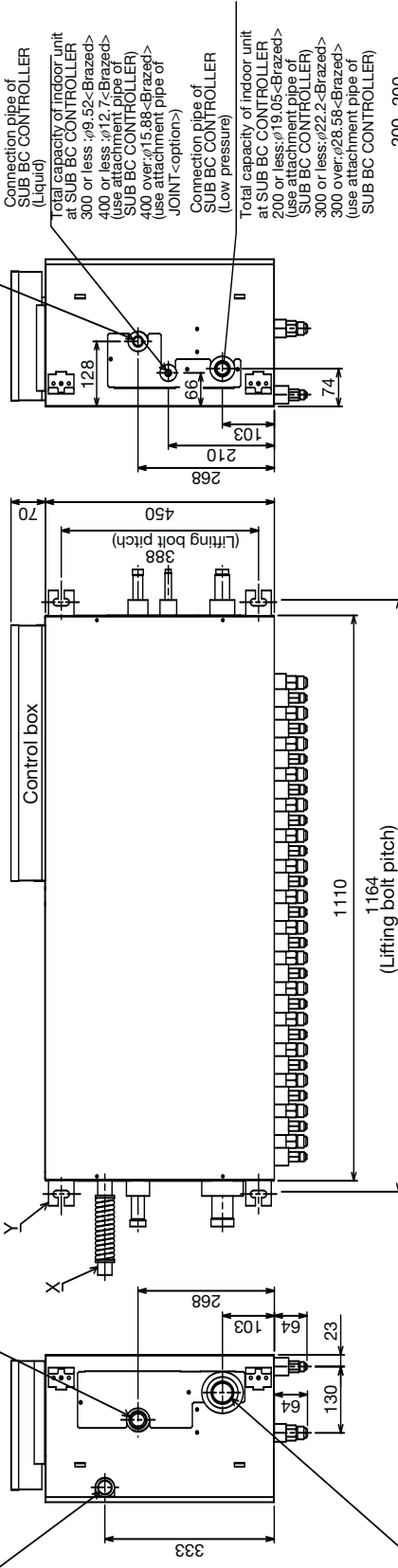
4. When using an outdoor unit-28HP(P700) or more, use this product.

5. Install this product in a location where noise (refrigerant noise) emitted by the unit will not disturb the neighbors.  
 (For use in quiet environments with low background noise, position the BC CONTROLLER at least 5m away from any indoor units.)



Connection pipe of outdoor unit (High pressure)  
 $\phi 28.58$  <Brazed>

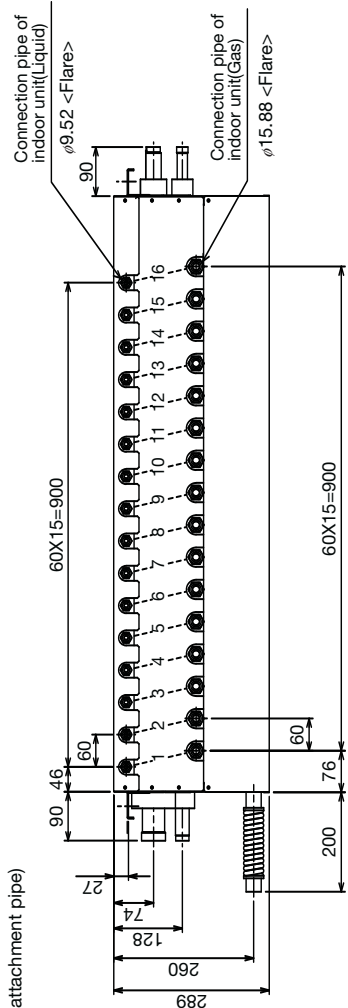
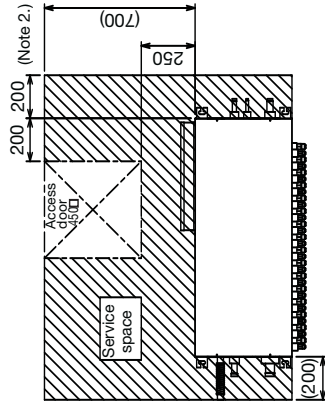
Drain piping VP-25 connection



Connection pipe of outdoor unit (Low pressure)  
 $\phi 34.93$  <Brazed> (use attachment pipe)

Connection pipe of indoor unit (Liquid)  
 $\phi 9.52$  <Flare>

Connection pipe of indoor unit (Gas)  
 $\phi 15.88$  <Flare>

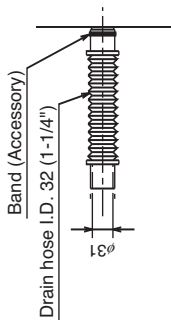
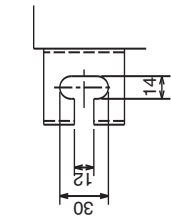


## CMB-P104,108V-GB

Draw. : cmb-p104-108v-gB-W656-839A

Unit : mm

- <Accessories>
- Refrigerant<Low pressure>conn. pipe ..... 4pcs.
  - Refrigerant<High pressure>conn. pipe ..... 2pcs.
  - Refrigerant<Liquid>conn. pipe ..... 2pcs.
  - Reducer(Large,Small) ..... Quantity for all connections
  - Drain hose I.D. 32 (1-1/4") ..... 1pc.
  - Hose band ..... 1pc.
  - Tie band ..... 1pcs.
- Note1. Suspension bolt( $\phi 10$ ), washer(M10), and nut(M10) prepare in the field.
2. Take notice of service space as follows.  
(Please give attention not to occupy service space by letting ducts and pipes through.)
3. Can't use singleness. (MAIN BC CONTROLLER is necessary.)



Detail of Y section

Detail of X section

Connection pipe of MAIN BC CONTROLLER (Liquid)

Total capacity of indoor units at SUB BC CONTROLLER  
300 or less :  $\phi 9.52$  <Brazed>  
300 over :  $\phi 12.7$  <Brazed> (use attachment pipe)

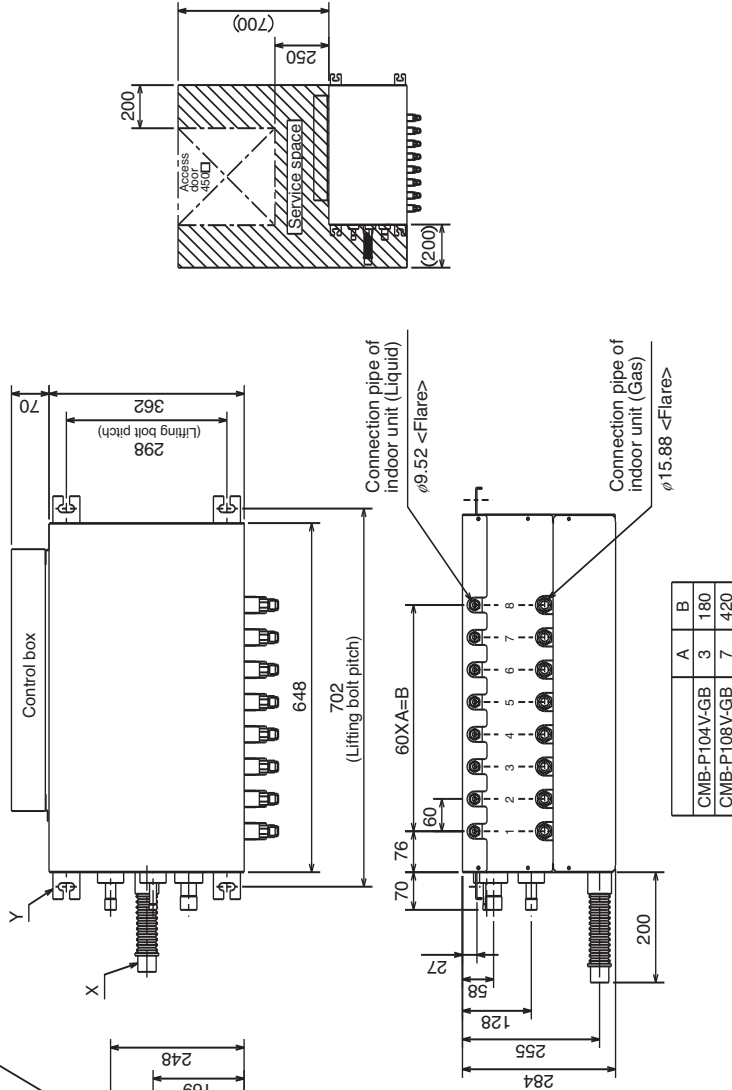
Connection pipe of MAIN BC CONTROLLER (High pressure)

Total capacity of indoor units at SUB BC CONTROLLER  
200 or less :  $\phi 15.88$  <Brazed> (use attachment pipe)  
200 over :  $\phi 19.05$  <Brazed>

Drain pipe O.D. 32 (1-1/4")

Connection pipe of MAIN BC CONTROLLER (Low pressure)

Total capacity of indoor units at SUB BC CONTROLLER  
200 or less :  $\phi 19.05$  <Brazed> (use attachment pipe)  
300 or less :  $\phi 22.2$  <Brazed>  
300 over :  $\phi 28.6$  <Brazed> (use attachment pipe)



A  
B  
C  
D  
E  
F  
G  
H  
V<sub>A</sub>  
V<sub>B</sub>  
BC  
CT

## CMB-P1016V-HB

Draw. : cmb-p1016v-hb-WKB94-G933  
Unit : mm

- <Accessories>
- Refrigerant<Low pressure> conn. pipe.....4pcs.
  - Refrigerant<High pressure> conn. pipe.....2pcs.
  - Refrigerant<Liquid> conn. pipe.....2pcs.
  - Reducer(Large,Small).....Quantity for all connections
  - Drain hose(VP-25 connection).....1pc.
  - Hose band.....1pc.
  - Tie band.....1pc.

Note1. Suspension bolt( $\phi 10$ ), washer(M10), and nut(M10) prepare in the field.

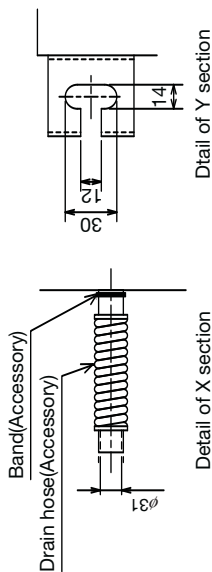
2. Take notice of service space as follows.

(Please give attention not to occupy service space by letting ducts and pipes through.)

3. Can't use singleness (MAIN BC CONTROLLER is necessary.)

4. Install this product in a location where noise (refrigerant noise) emitted by the unit will not disturb the neighbors.

(For use in quiet environments with low background noise position the BC CONTROLLER at least 5m away from any indoor units.)



Band(Accessory)

Drain hose(Accessory)

Detail of X section

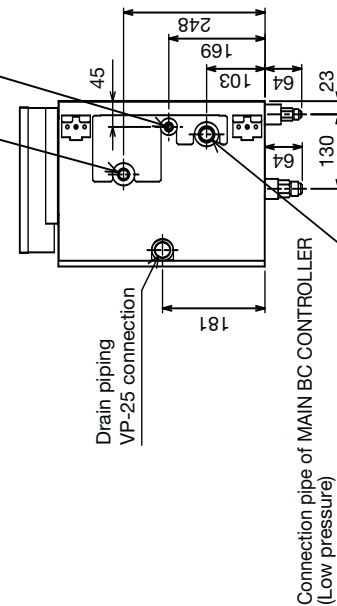
Detail of Y section

Connection pipe of MAIN BC CONTROLLER (High pressure)

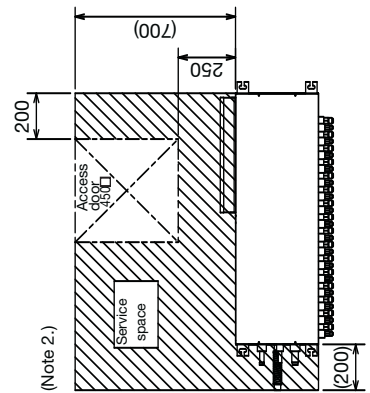
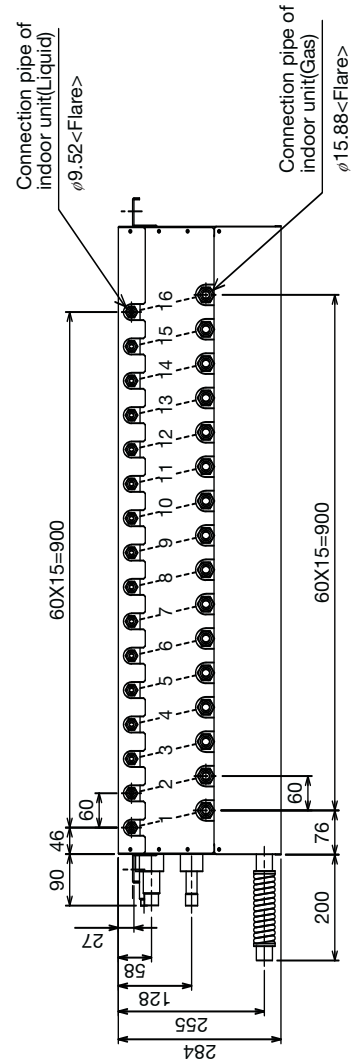
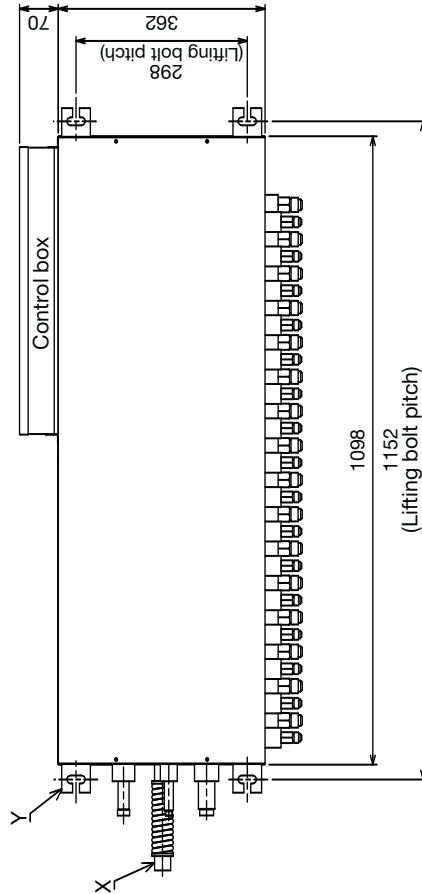
Total capacity of indoor units at SUB BC CONTROLLER  
200 or less:  $\phi 15.88$ <Brazed>(use attachment pipe)  
200 over :  $\phi 19.05$ <Brazed>

Connection pipe of MAIN BC CONTROLLER(Liquid)

Total capacity of indoor units at SUB BC CONTROLLER  
300 or less:  $\phi 9.52$  <Brazed>  
300 over :  $\phi 12.7$  <Brazed>(use attachment pipe)



Total capacity of indoor units at SUB BC CONTROLLER  
200 or less:  $\phi 19.05$ <Brazed>(use attachment pipe)  
300 or less:  $\phi 22.2$  <Brazed>  
300 over :  $\phi 28.58$ <Brazed>(use attachment pipe)



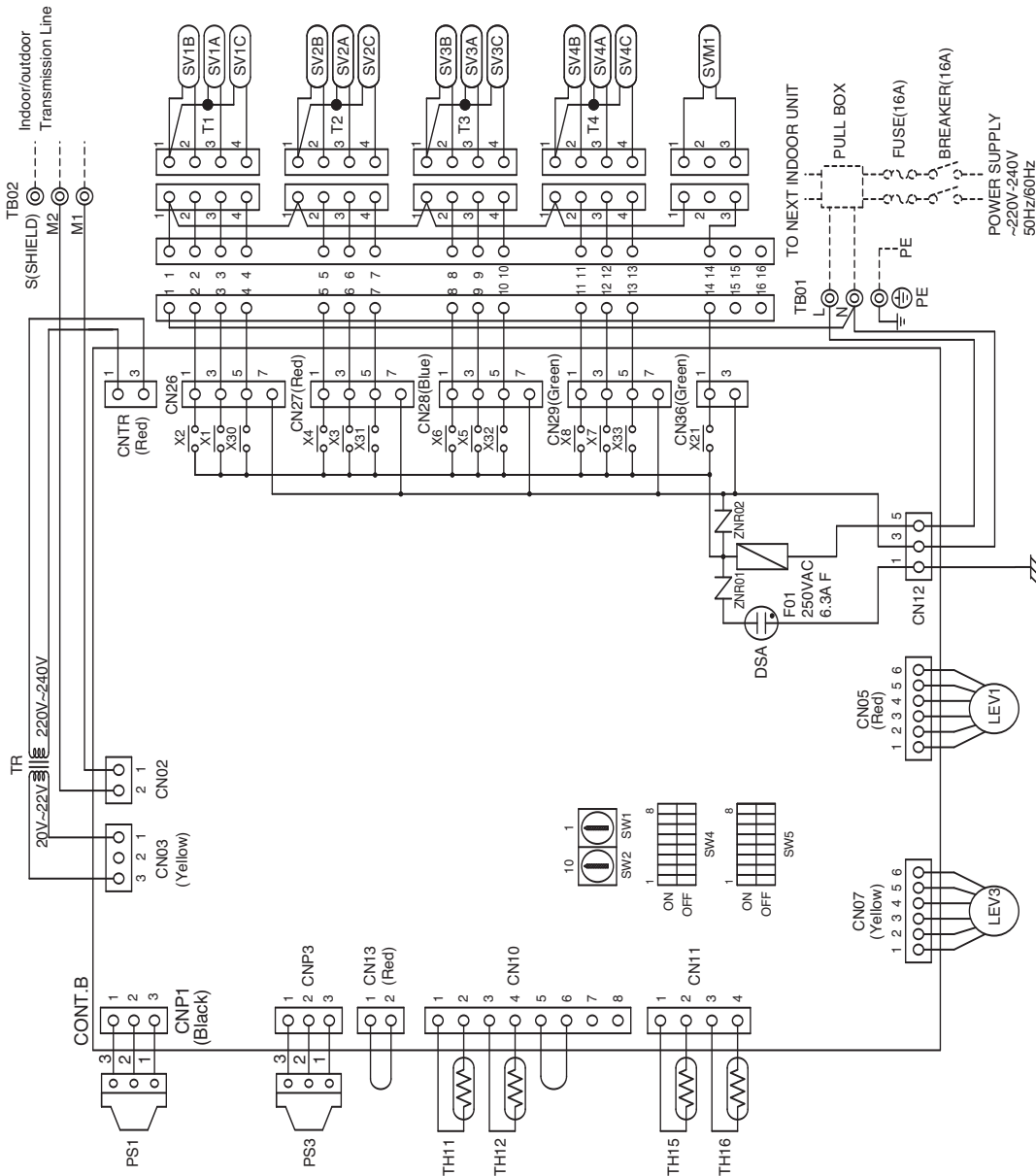
## CMB-P104V-G

Drw. : cmb-p104v-g-W656-841

### Symbol explanation

Symbol	Name
TR	Transformer
TH1,1,2,15,16	Thermistor sensor
LEV1,3	Expansion valve
PS1,3	Pressure sensor
CONT.B	Circuit board controller
TB01	Terminal block (for power source)
TB02	Terminal block (for Transmission)
SV1~4A,B,C	Solenoid valve
SVM1	Solenoid valve
T1~4	Terminal
F01	Fuse AC250V 6.3A F

Note: 1. TB02 is transmission terminal block.  
 Never connect power line to it.  
 2. The initial set values of switch on CONT.B are as follows.  
 SW1:0  
 SW2:0





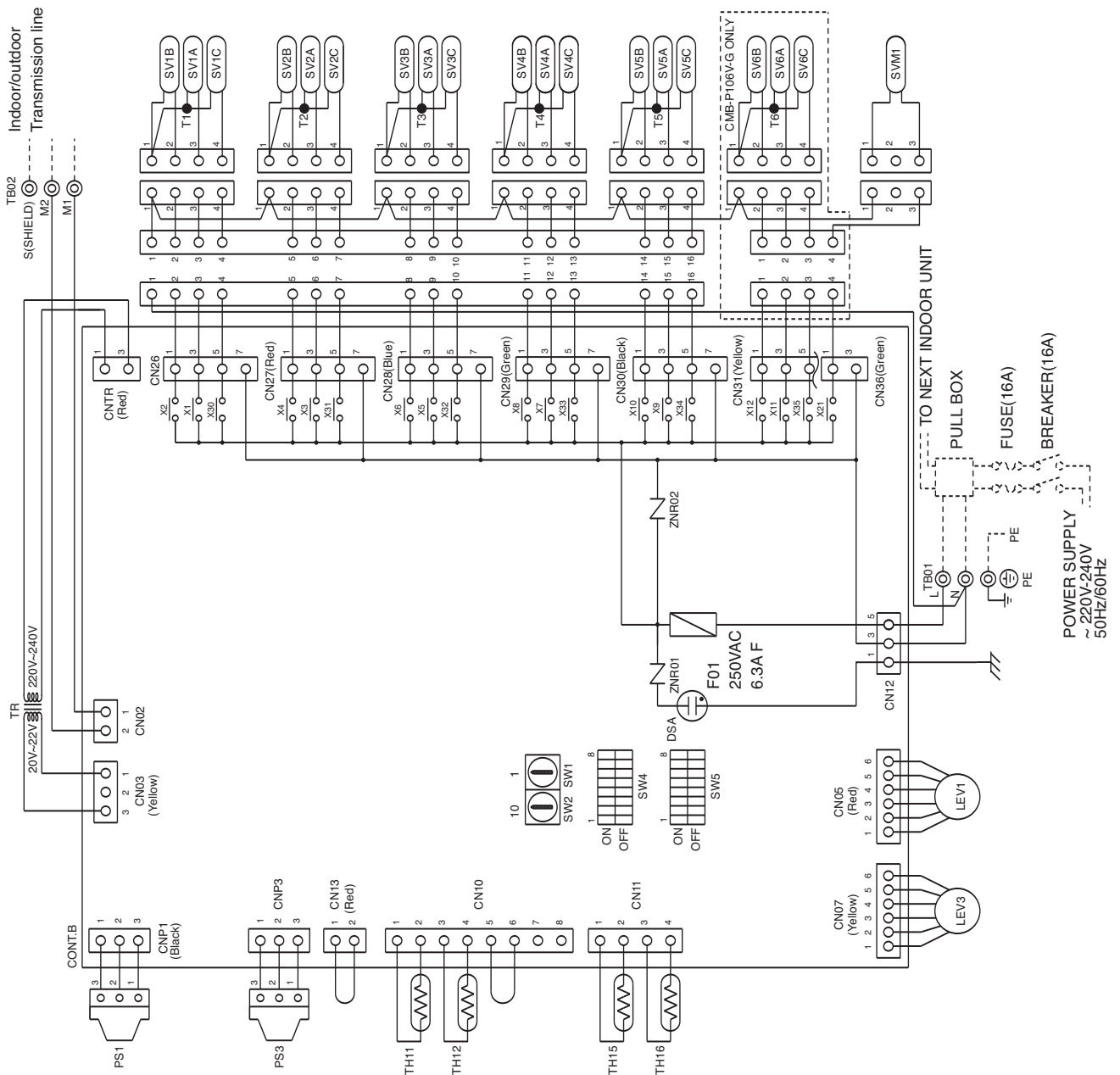
## CMB-P105,106V-G

Drw. : cmb-p105-106v-g-W656-842

Symbol explanation

Symbol	Name
TR	Transformer
TH11,12,15,16	Thermistor sensor
LEV1,3	Expansion valve
PS1,3	Pressure sensor
CONT.B	Circuit BC board controller
TB01	Terminal block (for power source)
TB02	Terminal block (for Transmission)
SV1~6A,B,C	Solenoid valve
SVM1	Solenoid valve
T1~6	Terminal
F01	Fuse AC250V6.3A F

Note: 1. TB02 is transmission terminal block.  
Never connect power line to it.  
2. The initial set values of switch on CONT.B are as follows.  
SW1:0  
SW2:0



## CMB-P108,1010V-G

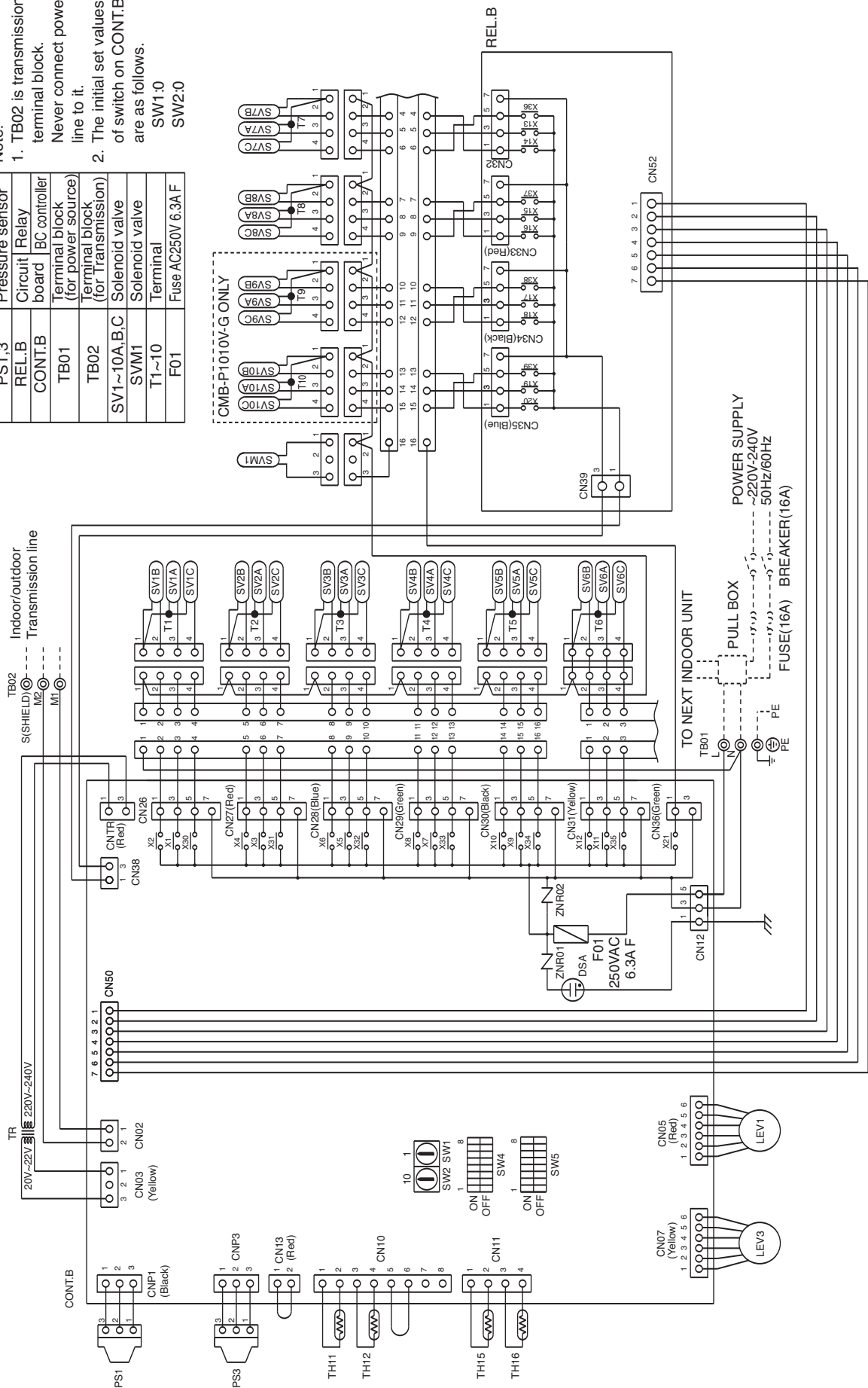
Draw. : cmb-p108-1010v-g-W656-843

### Symbol explanation

Symbol	Name
TR	Transformer
TH11,12,15,16	Thermistor sensor
LEV1,3	Expansion valve
PS1,3	Pressure sensor
REL.B	Circuit Relay
CONT.B	BC controller board
TB01	Terminal block (for power source)
TB02	Terminal block (for Transmission)
SV1~10A,B,C	Solenoid valve
SWM1	Solenoid valve Terminal
T1~10	Terminal
F01	Fuse AC250V 6.3A F

### Note:

1. TB02 is transmission terminal block. Never connect power line to it.
2. The initial set values of switch on CONT.B are as follows.  
SW1:0  
SW2:0

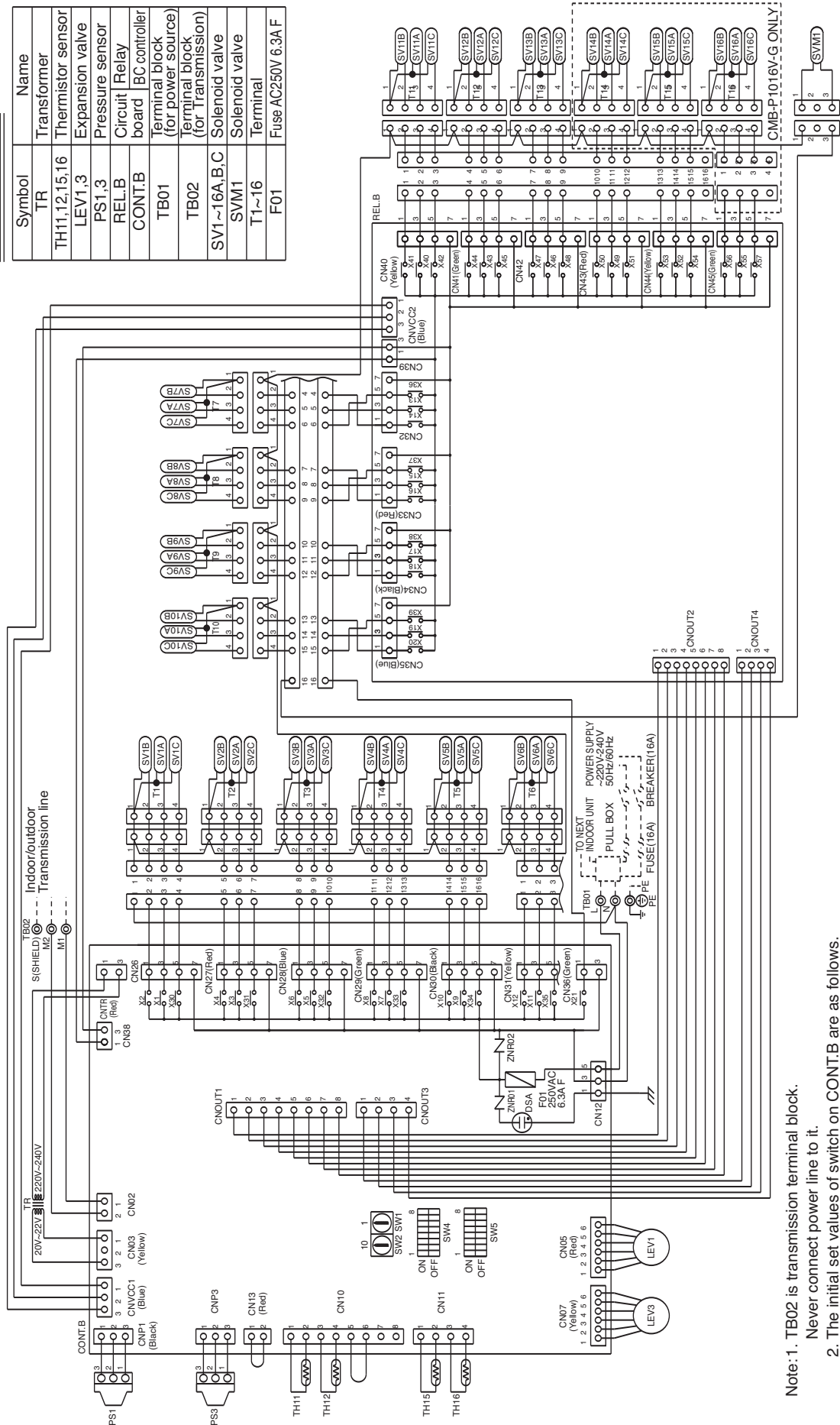


## CMB-P1013,1016V-G

Draw. : cmb-p1013-1016v-g-W656-844

Symbol explanation

Symbol	Name
TR	Transformer
TH11,12,15,16	Thermistor sensor
LEV1,3	Expansion valve
PS1,3	Pressure sensor
RELB	Circuit Relay
CONT.B	BC controller board
TB01	Terminal block (for power source)
TB02	Terminal block (for Transmission)
SV1~16A,B,C	Solenoid valve
SVM1	Solenoid valve
T1~16	Terminal
F01	Fuse AC250V 6.3A F



- Note: 1. TB02 is transmission terminal block.  
 Never connect power line to it.  
 2. The initial set values of switch on CONT.B are as follows.  
 SW1:0  
 SW2:0

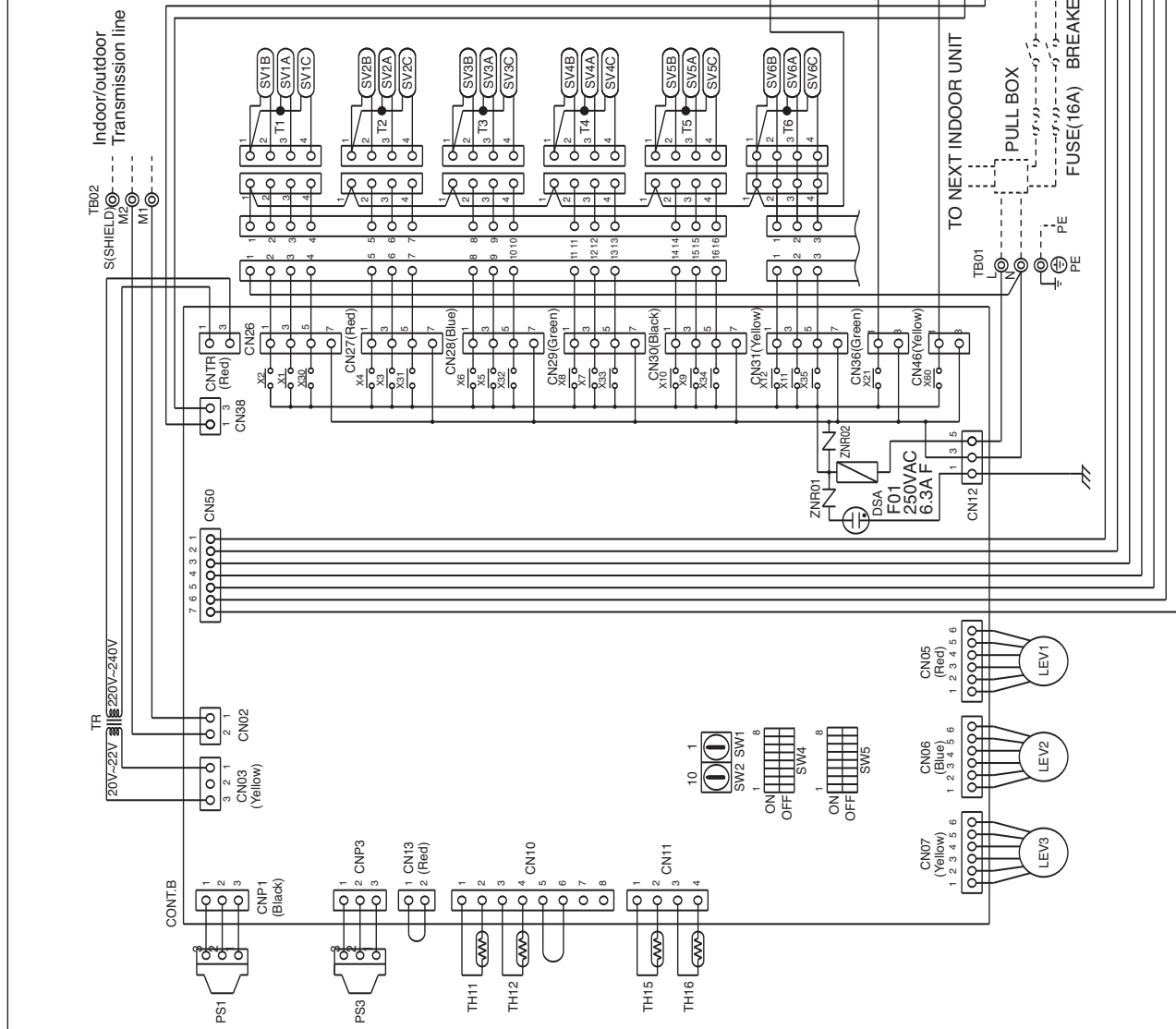
## CMB-P108,1010V-GA

Draw. : cmb-p108-1010v-gA-W656-845

Symbol explanation

Symbol	Name
TR	Transformer
TH11,12,15,16	Thermistor sensor
LEV1~3	Expansion valve
PS1,3	Pressure sensor
REL.B	Circuit Relay
CONT.B	board IC controller
TB01	Terminal block (for power source)
TB02	Terminal block (for Transmission)
SV1~10A,B,C	Solenoid valve
SVM1,2	Solenoid valve
T1~10	Terminal
F01	Fuse AC250V 6.3A F

- Note:
- TB02 is transmission terminal block. Never connect power line to it.
  - The initial set values of switch on CONT.B are as follows.  
SW1:0  
SW2:0



CMB-P1010V-GA ONLY

POWER SUPPLY  
~220V-240V  
50Hz/60Hz  
FUSE(16A) BREAKER(16A)

TO NEXT INDOOR UNIT

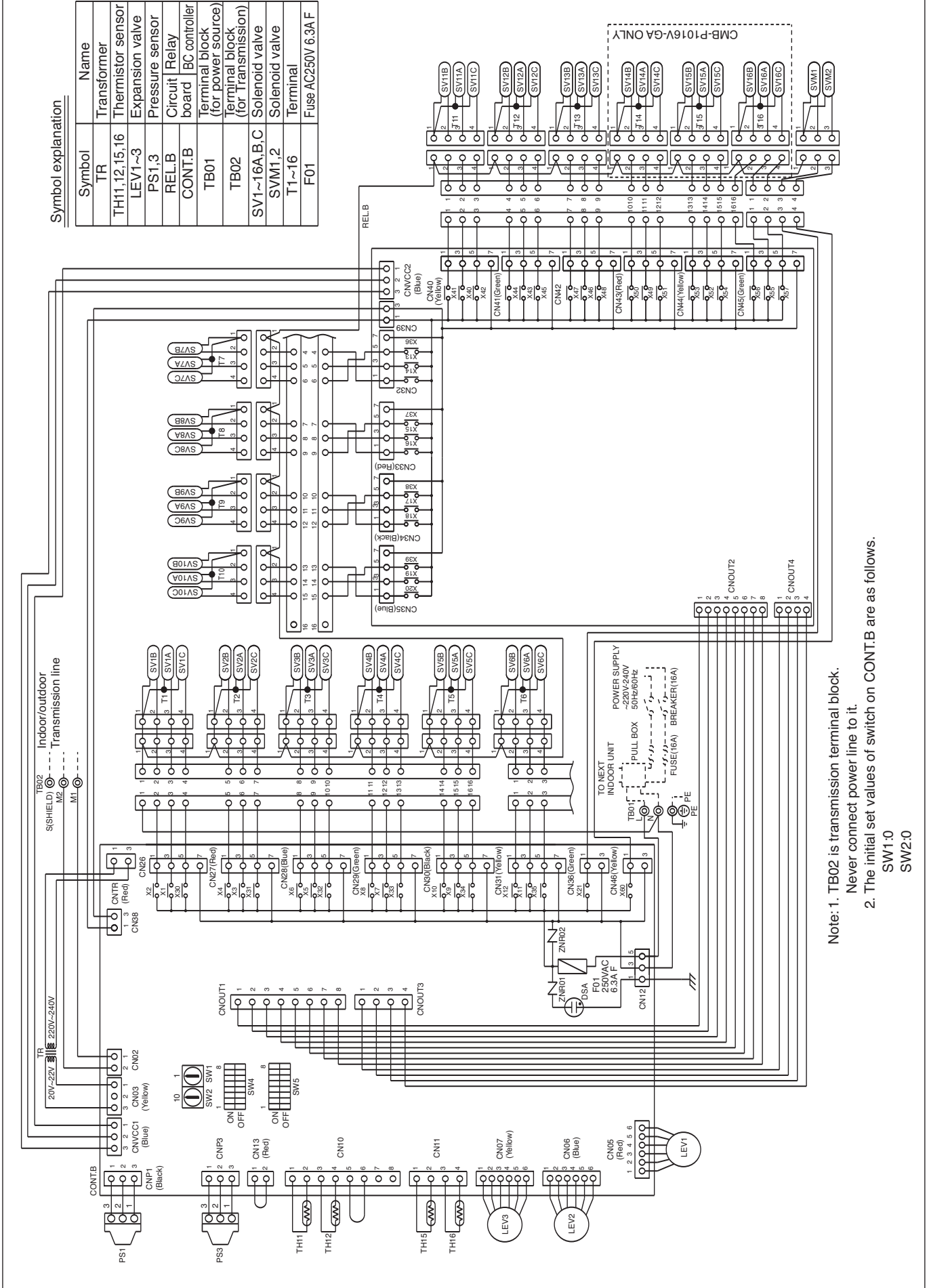
PULL BOX

## CMB-P1013,1016V-GA

Drw. : cmb-p1013-1016v-ga-W656-846

Symbol explanation

Symbol	Name
TR	Transformer
TH1,12,15,16	Thermistor sensor
LEV1~3	Expansion valve
PS1,3	Pressure sensor
REL.B	Circuit Relay
CONT.B	BC controller board
TB01	Terminal block (for power source)
TB02	Terminal block (for Transmission)
SV1~16A,B,C	Solenoid valve
SVM1,2	Solenoid valve
T1~16	Terminal
F01	Fuse AC250V/6.3A F

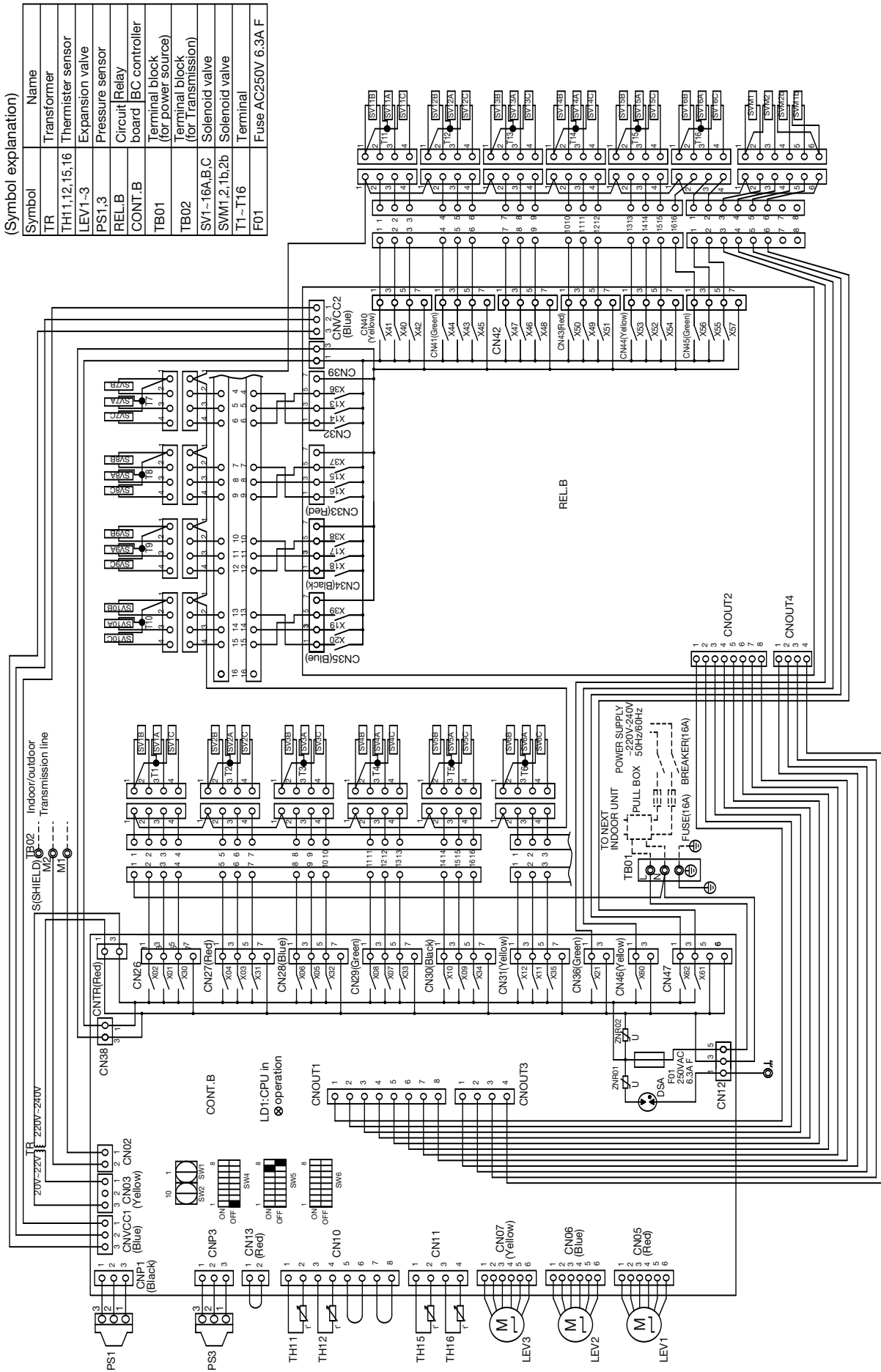


- Note: 1. TB02 is transmission terminal block.  
 Never connect power line to it.  
 2. The initial set values of switch on CONT.B are as follows.  
 SW1:0  
 SW2:0

## CMB-P1016V-HA

Drw. : cmb-p1016v-ha-WKB94G-934

Symbol	Name
TR	Transformer
TH1,12,15,16	Thermister sensor
LEV1-3	Expansion valve
PS1,3	Pressure sensor
REL.B	Circuit Relay board
CONT.B	BC controller board
TB01	Terminal block (for power source)
TB02	Terminal block (for Transmission)
SV1-16A,B,C	Solenoid valve
SVM1,2,1b,2b	Solenoid valve
T1-T16	Terminal
F01	Fuse AC250V 6.3A F



Note:1. TB02 is transmission terminal block. Never connect power line to it.

Note:2. The initial set values of switch on CONT.B are as follows.  
 SW1:0  
 SW2:0

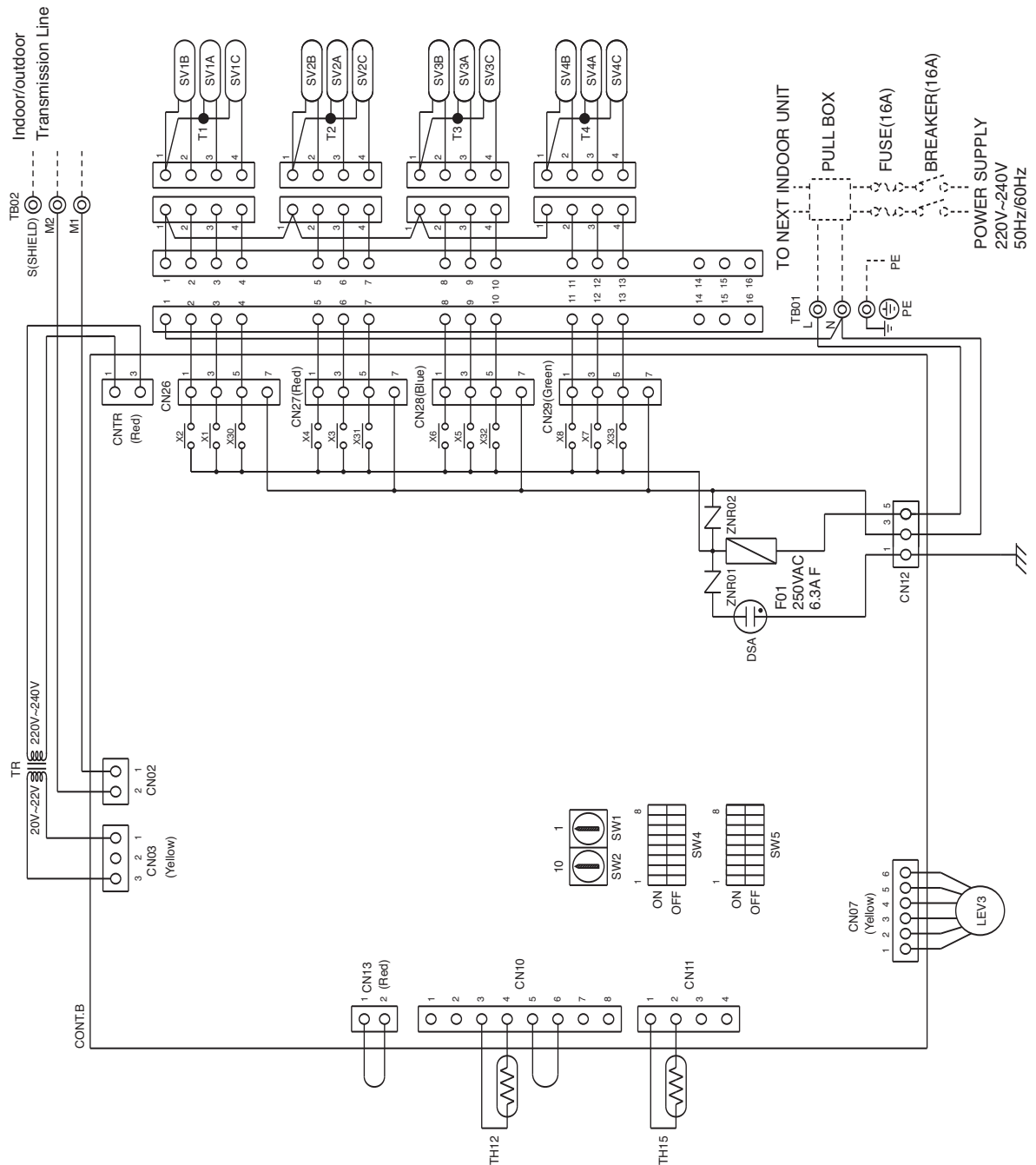
## CMB-P104V-GB

Drw. : cmb-p104v-gB-W656-847

Symbol explanation

Symbol	Name
TR	Transformer
TH12,15	Thermistor sensor
LEV3	Expansion valve
CONT.B	Circuit BC controller
TB01	Terminal block (for power source)
TB02	Terminal block (for Transmission)
SV1~4A,B,C	Solenoid valve
T1~4	Terminal
F01	Fuse AC250V 6.3AF

Note: 1. TB02 is transmission terminal block.  
 Never connect power line to it.  
 2. The initial set values of switch on CONT.B are as follows.  
 SW1:0  
 SW2:0



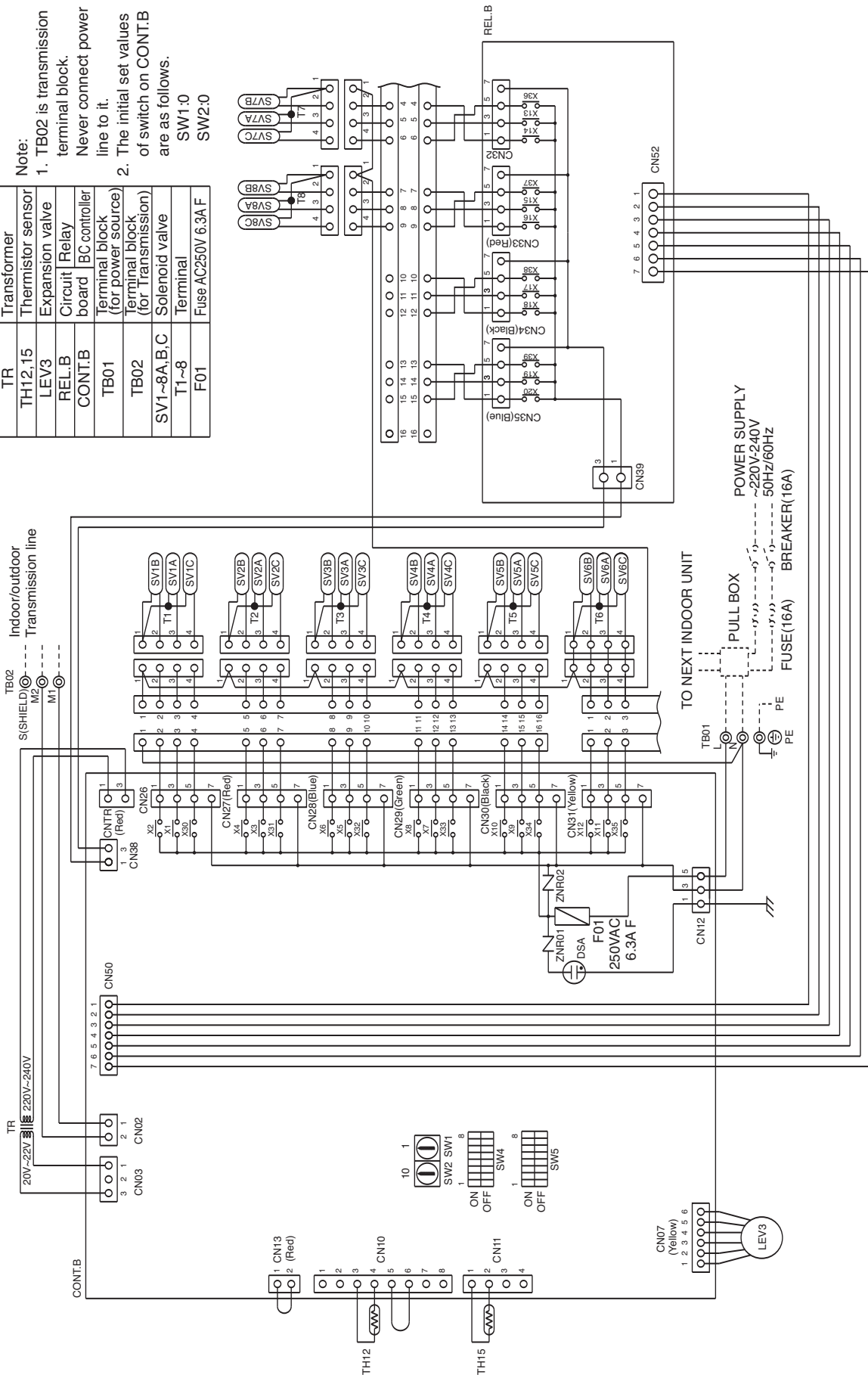
## CMB-P108V-GB

Drw. : cmb-p108v-gB-W656-848

Symbol explanation

Symbol	Name
TR	Transformer
TH12,15	Thermistor sensor
LEV3	Expansion valve
REL.B	Circuit Relay
CONT.B	BC controller board
TB01	Terminal block (for power source)
TB02	Terminal block (for Transmission)
SV1~8A,B,C	Solenoid valve
T1~8	Terminal
F01	Fuse AC250V 6.3A F

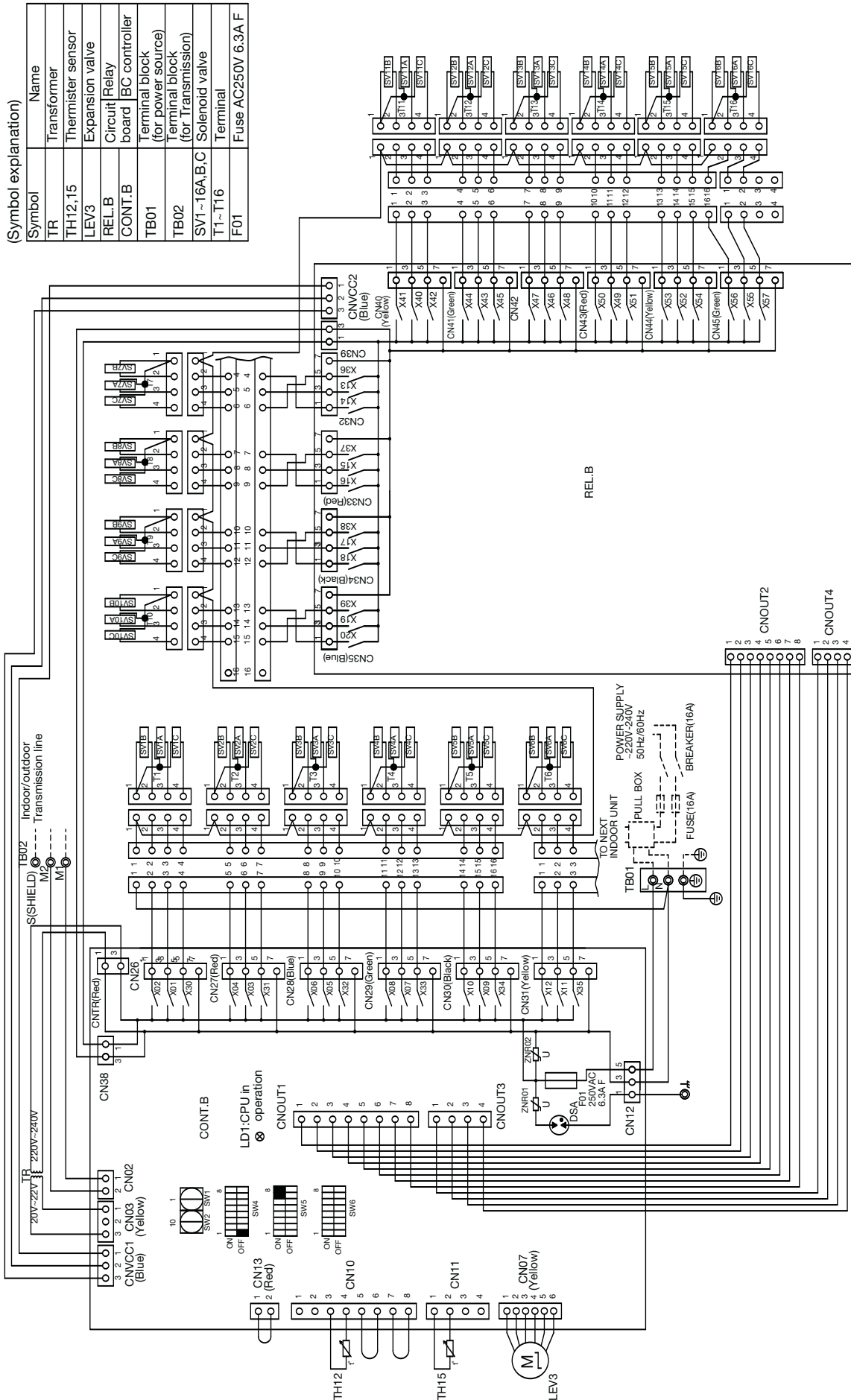
Note:  
 1. TB02 is transmission terminal block. Never connect power line to it.  
 2. The initial set values of switch on CONT.B are as follows.  
 SW1:0  
 SW2:0





## CMB-P1016V-HB

Draw. : cmb-p1016v-hb-WKB94G-935



2. The initial set values of switch on CONT.B are as follows.  
 SW1:0  
 SW2:0

Note:1. TB02 is transmission terminal block. Never connect power line to it.

A

B

C

D

E

F

G

H

V<sub>A</sub>

V<sub>B</sub>

**BC**

CT