

# CITY MULTI™

## BC controller

CMB-P-V-G,GA,GB

1. SPECIFICATIONS
2. EXTERNAL DIMENSIONS
3. WIRING DIAGRAMS
4. REFRIGERANT CIRCUITS

## CMB-P-V-G CMB-P-V-GA CMB-P-V-GB

BC  
BC-2  
BC-9  
BC-12  
BC-20

A

B

C

D

E

F

G

H

I

J

V<sub>a</sub>V<sub>b</sub>

BC

Model name		CMB-P104V-G		CMB-P105V-G		
Number of branch		4		5		
Power source		1N ~ 220/230/240V				
		50Hz	60Hz	50Hz	60Hz	
Power input	kW	Cooling : 0.067/0.076/0.085 Heating : 0.030/0.034/0.038	Cooling : 0.054/0.061/0.067 Heating : 0.024/0.027/0.030	Cooling : 0.082/0.093/0.104 Heating : 0.038/0.043/0.048	Cooling : 0.066/0.074/0.082 Heating : 0.030/0.034/0.038	
Current	A	Cooling : 0.31/0.34/0.36 Heating : 0.14/0.15/0.16	Cooling : 0.25/0.27/0.28 Heating : 0.11/0.12/0.13	Cooling : 0.38/0.41/0.44 Heating : 0.18/0.19/0.20	Cooling : 0.30/0.33/0.35 Heating : 0.14/0.15/0.16	
External finish		Galvanized steel plate (Lower part drain pan painting N1.5)				
Connectable outdoor unit		PURY-P200/250/300/350YGM-A(-BS) / PQRY-P200/250YGM-A				
Indoor unit capacity connectable to 1 branch	kW	Model P140 or smaller (Use optional joint pipe combining 2 branches when the total capacity exceeds 141.) (Use the reducer (standard accessory) when the indoor unit Model 50 or smaller is connected.)				
External dimension H x W x D		mm(in.) 284 x 648 x 432 (11-3/16" x 25-9/16" x 17-1/16")				
Refrigerant piping diameter	To outdoor unit	Connectable outdoor unit capacity				
		P200	P250/P300	P350		
	High press. pipe	φ15.88 (φ5/8") Brazed	φ19.05 (φ3/4") Brazed	φ19.05 (φ3/4") Brazed		
	Low press. pipe	φ19.05 (φ3/4") Brazed	φ22.2 (φ7/8") Brazed	φ28.58 (φ1-1/8") Brazed		
	To indoor unit	Liquid pipe	φ9.52 (φ3/8") Flare (φ6.35 (φ1/4") with attached reducer used, φ12.7 (φ1/2") with optional joint pipe used.)			
		Gas pipe	φ15.88 (φ5/8") Flare (φ12.7 (φ1/2") with attached reducer used, φ19.05 (φ3/4") with optional joint pipe used.)			
Drain pipe		VP-25				
Net weight	kg(lb)	24 (53)		27 (60)		
Accessories		·Drain Connection pipe (with flexible hose and insulation) ·Reducer				
Note: *1. Installation/foundation work, electrical connection work, duct work, insulation work, power source switch, and other items shall be referred to the Installation Manual. *2. The equipment is for R410A refrigerant.						

Ref.: M-WYNCO-6883&amp;6884

Model name		CMB-P106V-G		CMB-P108V-G	
Number of branch		6		8	
Power source		1N ~ 220/230/240V			
		50Hz	60Hz	50Hz	60Hz
Power input	kW	Cooling : 0.097/0.110/0.123 Heating : 0.045/0.051/0.057	Cooling : 0.078/0.088/0.097 Heating : 0.036/0.041/0.045	Cooling : 0.127/0.144/0.161 Heating : 0.060/0.068/0.076	Cooling : 0.102/0.115/0.127 Heating : 0.048/0.054/0.060
Current	A	Cooling : 0.45/0.48/0.52 Heating : 0.21/0.23/0.24	Cooling : 0.36/0.39/0.41 Heating : 0.17/0.18/0.19	Cooling : 0.58/0.63/0.68 Heating : 0.28/0.30/0.32	Cooling : 0.47/0.50/0.53 Heating : 0.22/0.24/0.25
External finish		Galvanized steel plate (Lower part drain pan painting N1.5)			
Connectable outdoor unit		PURY-P200/250/300/350YGM-A(-BS) / PQRV-P200/250YGM-A			
Indoor unit capacity connectable to 1 branch		Model P140 or smaller (Use optional joint pipe combining 2 branches when the total capacity exceeds 141.) (Use the reducer (standard accessory) when the indoor unit Model 50 or smaller is connected.)			
External dimension H x W x D		mm(in.) 284 x 648 x 432 (11-3/16" x 25-9/16" x 17-1/16")			
Refrigerant piping diameter	To outdoor unit	Connectable outdoor unit capacity			
			P200	P250/P300	P350
	High press. pipe	φ15.88 (φ5/8") Brazed	φ19.05 (φ3/4") Brazed	φ19.05 (φ3/4") Brazed	
	Low press. pipe	φ19.05 (φ3/4") Brazed	φ22.2 (φ7/8") Brazed	φ28.58 (φ1-1/8") Brazed	
	To indoor unit	Liquid pipe	φ9.52 (φ3/8") Flare (φ6.35 (φ1/4") with attached reducer used, φ12.7 (φ1/2") with optional joint pipe used.)		
Gas pipe		φ15.88 (φ5/8") Flare (φ12.7 (φ1/2") with attached reducer used, φ19.05 (φ3/4") with optional joint pipe used.)			
Drain pipe		VP-25			
Net weight	kg(lb)	29 (64)		34 (75)	
Accessories		·Drain Connection pipe (with flexible hose and insulation) ·Reducer			
<p>Note: *1. Installation/foundation work, electrical connection work, duct work, insulation work, power source switch, and other items shall be referred to the Installation Manual.</p> <p>*2. The equipment is for R410A refrigerant.</p>					

Ref.: M-WYNCO-6885&6886

Model name		CMB-P1010V-G		CMB-P1013V-G	
Number of branch		10		13	
Power source		1N ~ 220/230/240V			
		50Hz	60Hz	50Hz	60Hz
Power input	kW	Cooling : 0.156/0.177/0.198 Heating : 0.075/0.085/0.095	Cooling : 0.126/0.141/0.156 Heating : 0.060/0.068/0.075	Cooling : 0.201/0.228/0.255 Heating : 0.097/0.110/0.123	Cooling : 0.162/0.182/0.201 Heating : 0.078/0.088/0.097
Current	A	Cooling : 0.71/0.77/0.83 Heating : 0.35/0.37/0.40	Cooling : 0.58/0.62/0.65 Heating : 0.28/0.30/0.32	Cooling : 0.92/1.00/1.07 Heating : 0.45/0.48/0.52	Cooling : 0.74/0.80/0.84 Heating : 0.36/0.39/0.41
External finish		Galvanized steel plate (Lower part drain pan painting N1.5)			
Connectable outdoor unit		PURY-P200/250/300/350YGM-A(-BS) / PQRY-P200/250YGM-A			
Indoor unit capacity connectable to 1 branch		Model P140 or smaller (Use optional joint pipe combining 2 branches when the total capacity exceeds 141.) (Use the reducer (standard accessory) when the indoor unit Model 50 or smaller is connected.)			
External dimension H x W x D		mm(in.) 284 x 648 x 432 (11-3/16" x 25-9/16" x 17-1/16")		284 x 1,098 x 432 (11-3/16" x 43-1/4" x 17-1/16")	
Refrigerant piping diameter	To outdoor unit	Connectable outdoor unit capacity			
			P200	P250/P300	P350
		High press. pipe	φ15.88 (φ5/8") Brazed	φ19.05 (φ3/4") Brazed	φ19.05 (φ3/4") Brazed
		Low press. pipe	φ19.05 (φ3/4") Brazed	φ22.2 (φ7/8") Brazed	φ28.58 (φ1-1/8") Brazed
	To indoor unit	Liquid pipe	φ9.52 (φ3/8") Flare (φ6.35 (φ1/4") with attached reducer used, φ12.7 (φ1/2") with optional joint pipe used.)		
		Gas pipe	φ15.88 (φ5/8") Flare (φ12.7 (φ1/2") with attached reducer used, φ19.05 (φ3/4") with optional joint pipe used.)		
Drain pipe		VP-25			
Net weight	kg(lb)	39 (86)		47 (104)	
Accessories		·Drain Connection pipe (with flexible hose and insulation) ·Reducer			
Note: *1. Installation/foundation work, electrical connection work, duct work, insulation work, power source switch, and other items shall be referred to the Installation Manual. *2. The equipment is for R410A refrigerant.					

Ref.: M-WYNCO-6887&amp;6888

<b>Model name</b>		<b>CMB-P1016V-G</b>		
Number of branch		16		
Power source		1N ~ 220/230/240V		
		50Hz	60Hz	
Power input	kW	Cooling : 0.246/0.279/0.312 Heating : 0.119/0.135/0.151	Cooling : 0.198/0.222/0.246 Heating : 0.096/0.108/0.119	
Current	A	Cooling : 1.12/1.22/1.30 Heating : 0.55/0.59/0.63	Cooling : 0.90/0.97/1.03 Heating : 0.44/0.47/0.50	
External finish		Galvanized steel plate (Lower part drain pan painting N1.5)		
Connectable outdoor unit		PURY-P200/250/300/350YGM-A(-BS) / PQRV-P200/250YGM-A		
Indoor unit capacity connectable to 1 branch		kW Model P140 or smaller (Use optional joint pipe combining 2 branches when the total capacity exceeds 141.) (Use the reducer (standard accessory) when the indoor unit Model 50 or smaller is connected.)		
External dimension H x W x D		mm(in.) 284 x 1,098 x 432 (11-3/16" x 43-1/4" x 17-1/16")		
Refrigerant piping diameter	To outdoor unit	Connectable outdoor unit capacity		
			P200	P250/P300
	High press. pipe	φ15.88 (φ5/8") Brazed	φ19.05 (φ3/4") Brazed	φ19.05 (φ3/4") Brazed
	Low press. pipe	φ19.05 (φ3/4") Brazed	φ22.2 (φ7/8") Brazed	φ28.58 (φ1-1/8") Brazed
	To indoor unit	Liquid pipe	φ9.52 (φ3/8") Flare (φ6.35 (φ1/4") with attached reducer used, φ12.7 (φ1/2") with optional joint pipe used.)	
Gas pipe		φ15.88 (φ5/8") Flare (φ12.7 (φ1/2") with attached reducer used, φ19.05 (φ3/4") with optional joint pipe used.)		
Drain pipe		VP-25		
Net weight	kg(lb)	54 (120)		
Accessories		·Drain Connection pipe (with flexible hose and insulation) ·Reducer		
<p>Note: *1. Installation/foundation work, electrical connection work, duct work, insulation work, power source switch, and other items shall be referred to the Installation Manual. *2. The equipment is for R410A refrigerant.</p>				

Ref.: M-WYNCO-6889

# 1. SPECIFICATIONS

R410A Data G2

Model name		CMB-P108V-GA		CMB-P1010V-GA			
Number of branch		8		10			
Power source		1N ~ 220/230/240V					
		50Hz	60Hz	50Hz	60Hz		
Power input	kW	Cooling : 0.127/0.144/0.161 Heating : 0.060/0.068/0.076	Cooling : 0.102/0.115/0.127 Heating : 0.048/0.054/0.060	Cooling : 0.156/0.177/0.198 Heating : 0.075/0.085/0.095	Cooling : 0.126/0.141/0.156 Heating : 0.060/0.068/0.075		
Current	A	Cooling : 0.58/0.63/0.68 Heating : 0.28/0.30/0.32	Cooling : 0.47/0.50/0.53 Heating : 0.22/0.24/0.25	Cooling : 0.71/0.77/0.83 Heating : 0.35/0.37/0.40	Cooling : 0.58/0.62/0.65 Heating : 0.28/0.30/0.32		
External finish		Galvanized steel plate (Lower part drain pan painting N1.5)					
Connectable outdoor unit		PURY-P200/250/300/350/400/450/500/550/600/650YGM-A(-BS) / PQRV-P200/250/400/500YGM-A					
Indoor unit capacity connectable to 1 branch	kW	Model P140 or smaller (Use optional joint pipe combining 2 branches when the total capacity exceeds 141.) (Use the reducer (standard accessory) when the indoor unit Model 50 or smaller is connected.)					
External dimension H x W x D	mm(in.)	289 x 1,110 x 520 (11-7/16" x 43-3/4" x 20-1/2")					
Refrigerant piping diameter	To outdoor unit	Connectable outdoor unit capacity					
			P200	P250/P300	P350	P400~P500	P550~P650
		High press. pipe	φ15.88 (φ5/8") Brazed	φ19.05 (φ3/4") Brazed	φ19.05 (φ3/4") Brazed	φ22.2 (φ7/8") Brazed	φ28.58 (φ1-1/8") Brazed
	Low press. pipe	φ19.05 (φ3/4") Brazed	φ22.2 (φ7/8") Brazed	φ28.58 (φ1-1/8") Brazed	φ28.58 (φ1-1/8") Brazed	φ28.58 (φ1-1/8") Brazed	
	To indoor unit	Liquid pipe	φ9.52 (φ3/8") Flare (φ6.35 (φ1/4") with attached reducer used, φ12.7 (φ1/2") with optional joint pipe used.)				
		Gas pipe	φ15.88 (φ5/8") Flare (φ12.7 (φ1/2") with attached reducer used, φ19.05 (φ3/4") with optional joint pipe used.)				
	To other BC controller	Total indoor unit capacity connected to this Sub BC controller					
			~P200	P201~P300	P301~P350		
		High press. pipe	φ15.88 (φ5/8") Brazed	φ19.05 (φ3/4") Brazed	φ19.05 (φ3/4") Brazed		
		Low press. pipe	φ19.05 (φ3/4") Brazed	φ22.2 (φ7/8") Brazed	φ28.58 (φ1-1/8") Brazed		
	Liquid pipe	φ9.52 (φ3/8") Brazed	φ9.52 (φ3/8") Brazed	φ12.7 (φ1/2") Brazed			
Drain pipe		VP-25					
Net weight	kg(lb)	44 (98)		49 (109)			
Accessories		<ul style="list-style-type: none"> <li>·Drain Connection pipe (with flexible hose and insulation)</li> <li>·Reducer</li> </ul>					
<p>Note: *1. Installation/foundation work, electrical connection work, duct work, insulation work, power source switch, and other items shall be referred to the Installation Manual. *2. The equipment is for R410A refrigerant.</p>							

Ref.: M-WYNCO-6890&6891

Model name		CMB-P1013V-GA			CMB-P1016V-GA			
Number of branch		13			16			
Power source		1N ~ 220/230/240V						
		50Hz	60Hz	50Hz	60Hz			
Power input	kW	Cooling : 0.201/0.228/0.255 Heating : 0.097/0.110/0.123	Cooling : 0.162/0.182/0.201 Heating : 0.078/0.088/0.097	Cooling : 0.246/0.279/0.312 Heating : 0.119/0.135/0.151	Cooling : 0.198/0.222/0.246 Heating : 0.096/0.108/0.119			
Current	A	Cooling : 0.92/1.00/1.07 Heating : 0.45/0.48/0.52	Cooling : 0.74/0.80/0.84 Heating : 0.36/0.39/0.41	Cooling : 1.12/1.22/1.30 Heating : 0.55/0.59/0.63	Cooling : 0.90/0.97/1.03 Heating : 0.44/0.47/0.50			
External finish		Galvanized steel plate (Lower part drain pan painting N1.5)						
Connectable outdoor unit		PURY-P200/250/300/350/400/450/500/550/600/650YGM-A(-BS) / PQRY-P200/250/400/500YGM-A						
Indoor unit capacity connectable to 1 branch		Model P140 or smaller (Use optional joint pipe combining 2 branches when the total capacity exceeds 141.) (Use the reducer (standard accessory) when the indoor unit Model 50 or smaller is connected.)						
External dimension H x W x D		mm(in.) 289 x 1,110 x 520 (11-7/16" x 43-3/4" x 20-1/2")						
Refrigerant piping diameter	To outdoor unit	Connectable outdoor unit capacity						
			P200	P250/P300	P350	P400~P500	P550~P650	
		High press. pipe	φ15.88 (φ5/8") Brazed	φ19.05 (φ3/4") Brazed	φ19.05 (φ3/4") Brazed	φ22.2 (φ7/8") Brazed	φ28.58 (φ1-1/8") Brazed	
		Low press. pipe	φ19.05 (φ3/4") Brazed	φ22.2 (φ7/8") Brazed	φ28.58 (φ1-1/8") Brazed	φ28.58 (φ1-1/8") Brazed	φ28.58 (φ1-1/8") Brazed	
	To indoor unit	Liquid pipe	φ9.52 (φ3/8") Flare (φ6.35 (φ1/4") with attached reducer used, φ12.7 (φ1/2") with optional joint pipe used.)					
		Gas pipe	φ15.88 (φ5/8") Flare (φ12.7 (φ1/2") with attached reducer used, φ19.05 (φ3/4") with optional joint pipe used.)					
	To other BC controller	Total indoor unit capacity connected to this Sub BC controller						
			~P200	P201~P300		P301~P350		
			High press. pipe	φ15.88 (φ5/8") Brazed	φ19.05 (φ3/4") Brazed		φ19.05 (φ3/4") Brazed	
			Low press. pipe	φ19.05 (φ3/4") Brazed	φ22.2 (φ7/8") Brazed		φ28.58 (φ1-1/8") Brazed	
	Liquid pipe	φ9.52 (φ3/8") Brazed	φ9.52 (φ3/8") Brazed		φ12.7 (φ1/2") Brazed			
Drain pipe		VP-25						
Net weight		kg(lb)	57 (126)			64 (142)		
Accessories		・Drain Connection pipe (with flexible hose and insulation) ・Reducer						
Note: *1. Installation/foundation work, electrical connection work, duct work, insulation work, power source switch, and other items shall be referred to the Installation Manual. *2. The equipment is for R410A refrigerant.								

Ref.: M-WYNCO-6892&amp;6893

Model name		CMB-P104V-GB		CMB-P108V-GB	
Number of branch		4		8	
Power source		1N ~ 220/230/240V			
		50Hz	60Hz	50Hz	60Hz
Power input	kW	Cooling : 0.060/0.068/0.076 Heating : 0.030/0.034/0.038	Cooling : 0.048/0.054/0.060 Heating : 0.024/0.027/0.030	Cooling : 0.119/0.135/0.151 Heating : 0.060/0.068/0.076	Cooling : 0.096/0.108/0.119 Heating : 0.048/0.054/0.060
Current	A	Cooling : 0.28/0.30/0.32 Heating : 0.14/0.15/0.16	Cooling : 0.22/0.24/0.25 Heating : 0.11/0.12/0.13	Cooling : 0.55/0.59/0.63 Heating : 0.28/0.30/0.32	Cooling : 0.44/0.47/0.50 Heating : 0.22/0.24/0.25
External finish		Galvanized steel plate (Lower part drain pan painting N1.5)			
Connectable BC controller	Main BC	CMB-P108/1010/1013/1016V-GA			
	Sub BC	CMB-P104/108V-GB			
Indoor unit capacity connectable to 1 branch	kW	Model P140 or smaller (Use optional joint pipe combining 2 branches when the total capacity exceeds 141.) (Use the reducer (standard accessory) when the indoor unit Model 50 or smaller is connected.)			
External dimension H x W x D mm(in.)		284 x 648 x 432 (11-3/16" x 25-9/16" x 17-1/16")			
Refrigerant piping diameter	To Main BC controller	Total indoor unit capacity connected to this Sub BC controller			
			~P200	P201~P300	P301~P350
		High press. pipe	φ15.88 (φ5/8") Brazed	φ19.05 (φ3/4") Brazed	φ19.05 (φ3/4") Brazed
	Low press. pipe	φ19.05 (φ3/4") Brazed	φ22.2 (φ7/8") Brazed	φ28.58 (φ1-1/8") Brazed	
	Liquid pipe	φ9.52 (φ3/8") Brazed	φ9.52 (φ3/8") Brazed	φ12.7 (φ1/2") Brazed	
	To indoor unit	Liquid pipe	φ9.52 (φ3/8") Flare (φ6.35 (φ1/4") with attached reducer used, φ12.7 (φ1/2") with optional joint pipe used.)		
Gas pipe		φ15.88 (φ5/8") Flare (φ12.7 (φ1/2") with attached reducer used, φ19.05 (φ3/4") with optional joint pipe used.)			
Drain pipe		VP-25			
Net weight	kg(lb)	22 (49)		32 (71)	
Accessories		・Drain Connection pipe (with flexible hose and insulation) ・Reducer			
Note: *1. Installation/foundation work, electrical connection work, duct work, insulation work, power source switch, and other items shall be referred to the Installation Manual. *2. The equipment is for R410A refrigerant.					

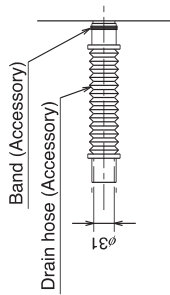
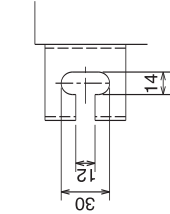
Ref.: M-WYNCO-6894&amp;6895



## CMB-P104,105,106,108,1010,1013,1016V-G

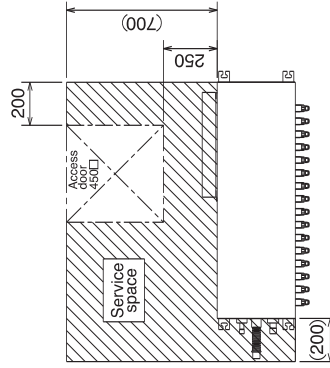
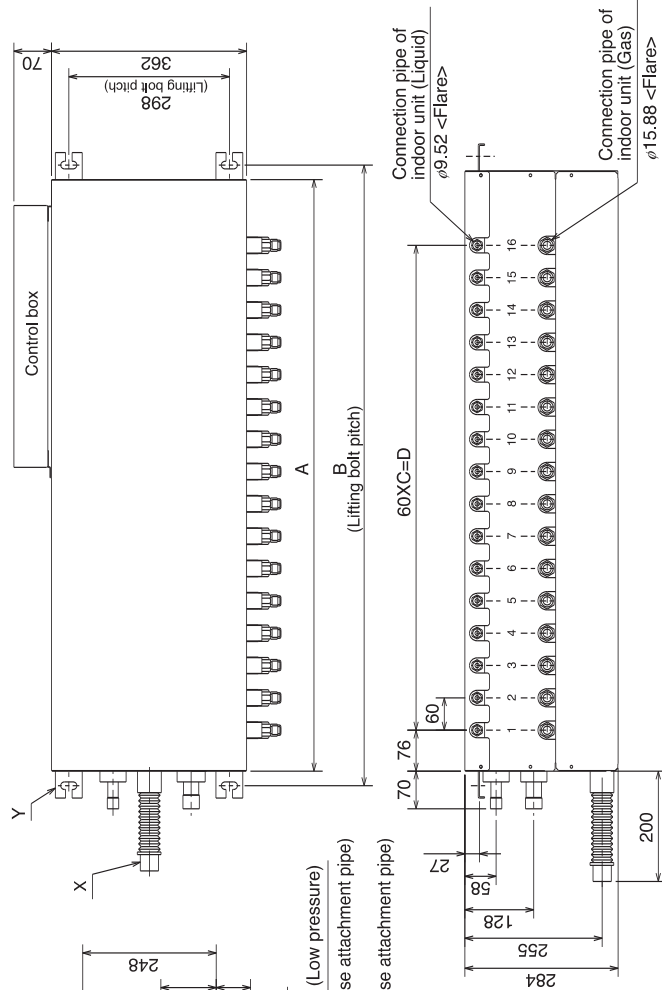
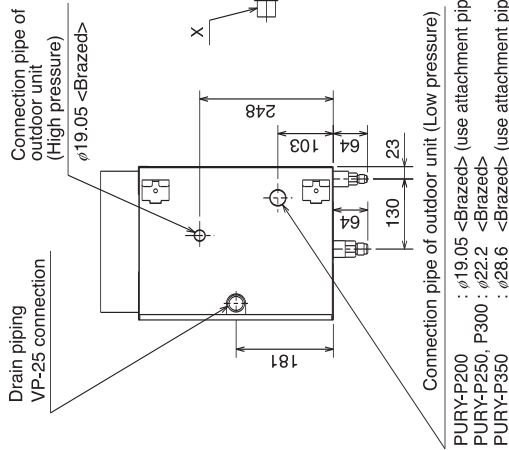
Drw. : cmb-p104-1016v-g-W656-840A  
Unit : mm

- <Accessories>
- Refrigerant<Low pressure> conn. pipe..... 2pcs.
  - Refrigerant<High pressure> conn. pipe..... 1pc.
  - Reducer(Large.Small)..... Quantity for all connections
  - Drain hose(VP-25 connection)..... 1pc.
  - Hose band..... 1pc.
  - Tie band..... 1pc.
- Note1. Suspension bolt(φ10), washer(M10), and nut(M10) prepare in the field.  
2. Take notice of service space as follows.  
(Please give attention not to occupy service space by letting ducts and pipes through.)



Detail of Y section

Detail of X section



	A	B	C	D
CMB-P104V-G			3	180
CMB-P105V-G			4	240
CMB-P106V-G	648	702	5	300
CMB-P108V-G			7	420
CMB-P1010V-G			9	540
CMB-P1013V-G	1098	1152	12	720
CMB-P1016V-G			15	900

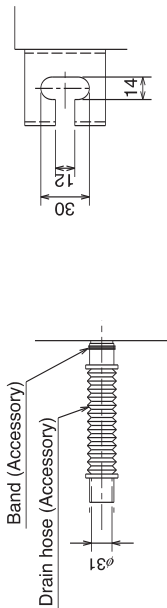
## CMB-P108,1010,1013,1016V-GA

Draw. : cmb-p108-1016v-ga-W656-838A  
Unit : mm

- <Accessories>
- Refrigerant<High pressure>conn. pipe.....2pcs.
  - Reducer(Large,Small)..... Quantity for all connections
  - Drain hose(VP-25 connection)..... 1pc.
  - Hose band..... 1pc.
  - Tie band..... 1pc.

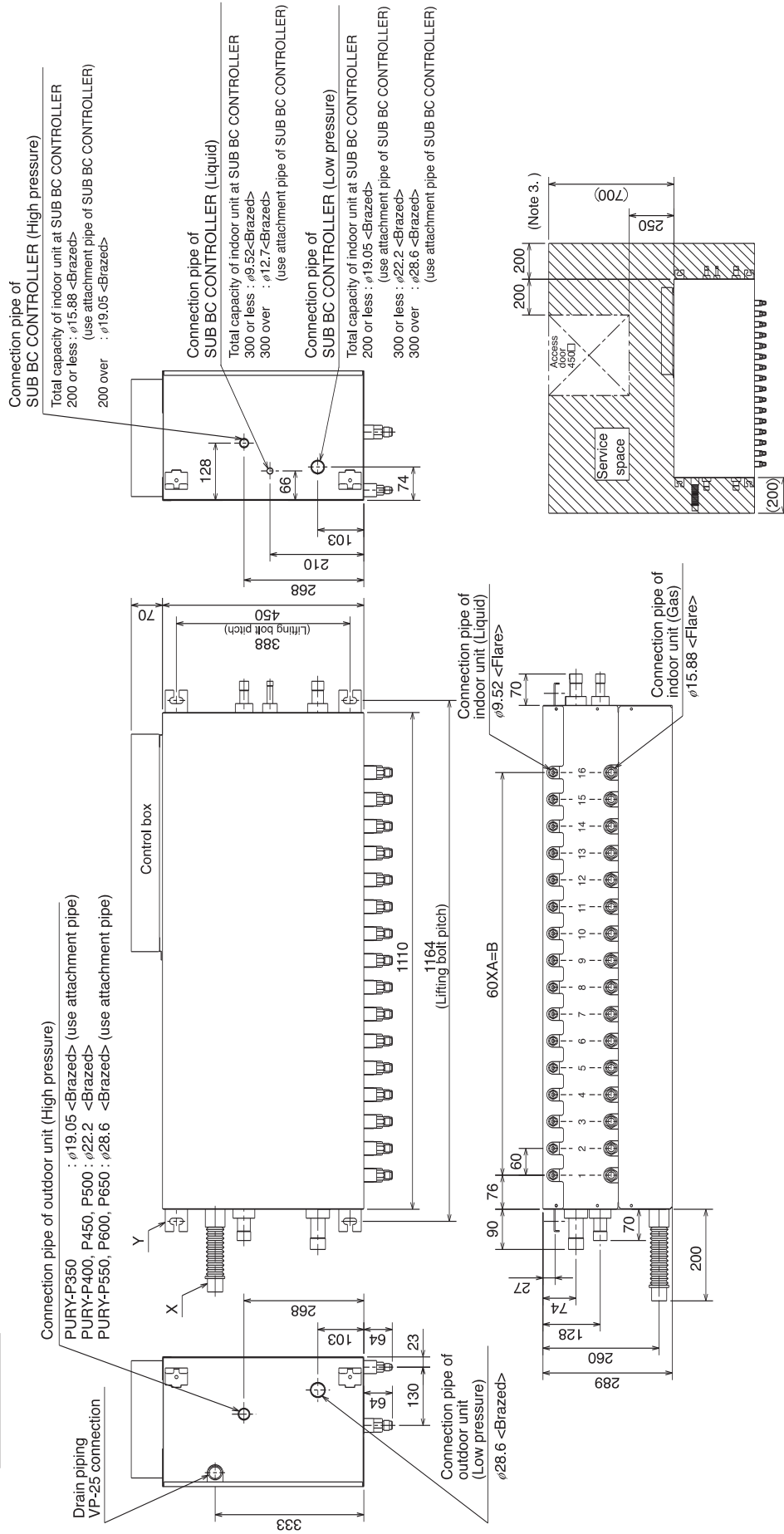
	A	B
CMB-P108V-GA	7	420
CMB-P1010V-GA	9	540
CMB-P1013V-GA	12	720
CMB-P1016V-GA	15	900

- Note1. Suspension bolt(φ10), washer(M10), and nut(M10) prepare in the field.  
2. Take notice of service space as follows.  
(Please give attention not to occupy service space by letting ducts and pipes through.)  
3. Please take space to connect SUB BC CONTROLLER.



Detail of Y section

Connection pipe of outdoor unit (High pressure)  
PURY-P350 : φ19.05<Brazed> (use attachment pipe)  
PURY-P400, P450, P500 : φ22.2<Brazed>  
PURY-P550, P600, P650 : φ28.6<Brazed> (use attachment pipe)

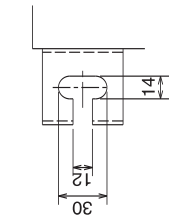


CMB-P104,108V-GB

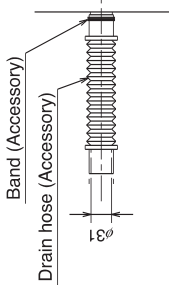
Drw. : cmb-p104-108v-gB-W656-839A  
Unit : mm

- <Accessories>
- Refrigerant<Low pressure>conn. pipe..... 4pcs.
  - Refrigerant<High pressure>conn. pipe..... 2pcs.
  - Refrigerant<Liquid>conn. pipe..... 2pcs.
  - Reducer(Large,Small)..... Quantity for all connections
  - Drain hose(VP-25 connection)..... 1pc.
  - Hose band..... 1pc.
  - Tie band..... 1pcs.

- Note 1. Suspension bolt( $\phi$ 10), washer(M10), and nut(M10) prepare in the field.  
2. Take notice of service space as follows.  
(Please give attention not to occupy service space by letting ducts and pipes through.)  
3. Can't use singleness. (MAIN BC CONTROLLER is necessary.)



Detail of Y section



Detail of X section

Connection pipe of MAIN BC CONTROLLER (Liquid)

Total capacity of indoor units at SUB BC CONTROLLER  
300 or less :  $\phi$ 9.52 <Brazed>  
300 over :  $\phi$ 12.7 <Brazed> (use attachment pipe)

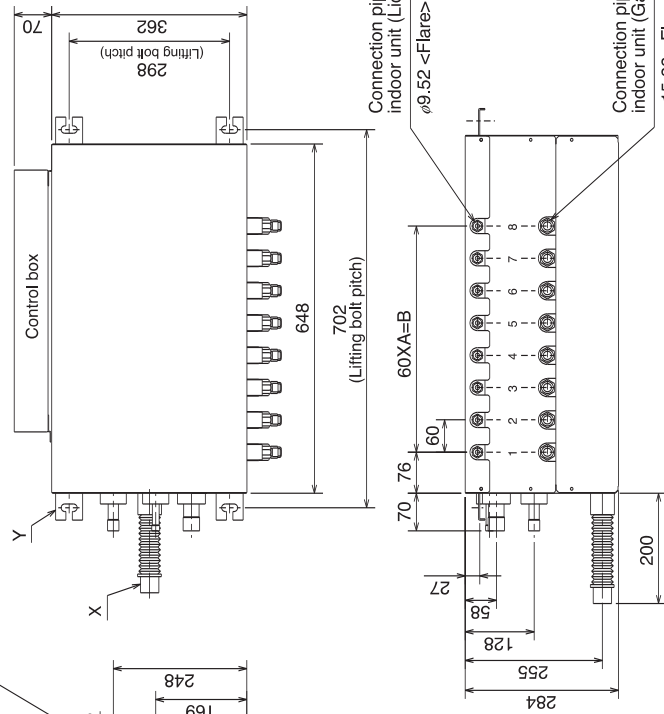
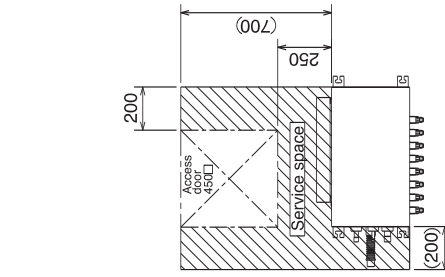
Connection pipe of MAIN BC CONTROLLER (High pressure)

Total capacity of indoor units at SUB BC CONTROLLER  
200 or less :  $\phi$ 15.88 <Brazed> (use attachment pipe)  
200 over :  $\phi$ 19.05 <Brazed>

Drain piping VP-25 connection

Connection pipe of MAIN BC CONTROLLER (Low pressure)

Total capacity of indoor units at SUB BC CONTROLLER  
200 or less :  $\phi$ 19.05 <Brazed> (use attachment pipe)  
300 or less :  $\phi$ 22.2 <Brazed>  
300 over :  $\phi$ 28.6 <Brazed> (use attachment pipe)



	A	B
CMB-P104V-GB	3	180
CMB-P108V-GB	7	420

A  
B  
C  
D  
E  
F  
G  
H  
I  
J  
V<sub>4</sub>  
V<sub>6</sub>  
BC

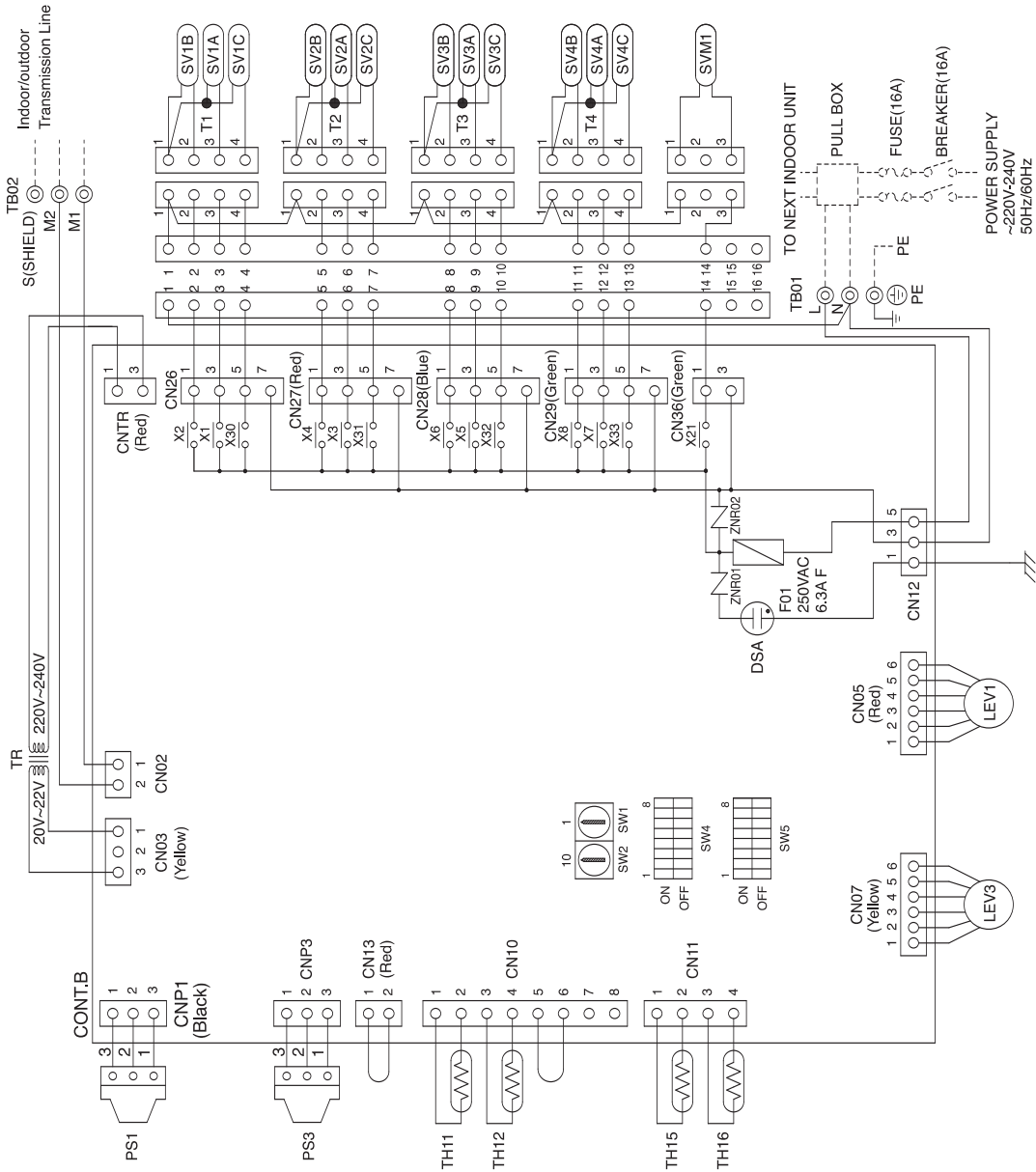
CMB-P104V-G

Drw. : cmb-p104v-g-W656-841

Symbol explanation

Symbol	Name
TR	Transformer
TH11,12,15,16	Thermistor sensor
LEV1,3	Expansion valve
PS1,3	Pressure sensor
CONT.B	Circuit board controller
TB01	Terminal block (for power source)
TB02	Terminal block (for Transmission)
SV1~4A,B,C	Solenoid valve
SVM1	Solenoid valve
T1~4	Terminal
F01	Fuse AC250V 6.3AF

Note:1.TB02 is transmission terminal block.  
Never connect power line to it.  
2.The initial set values of switch on CONT.B are as follows.  
SW1:0  
SW2:0



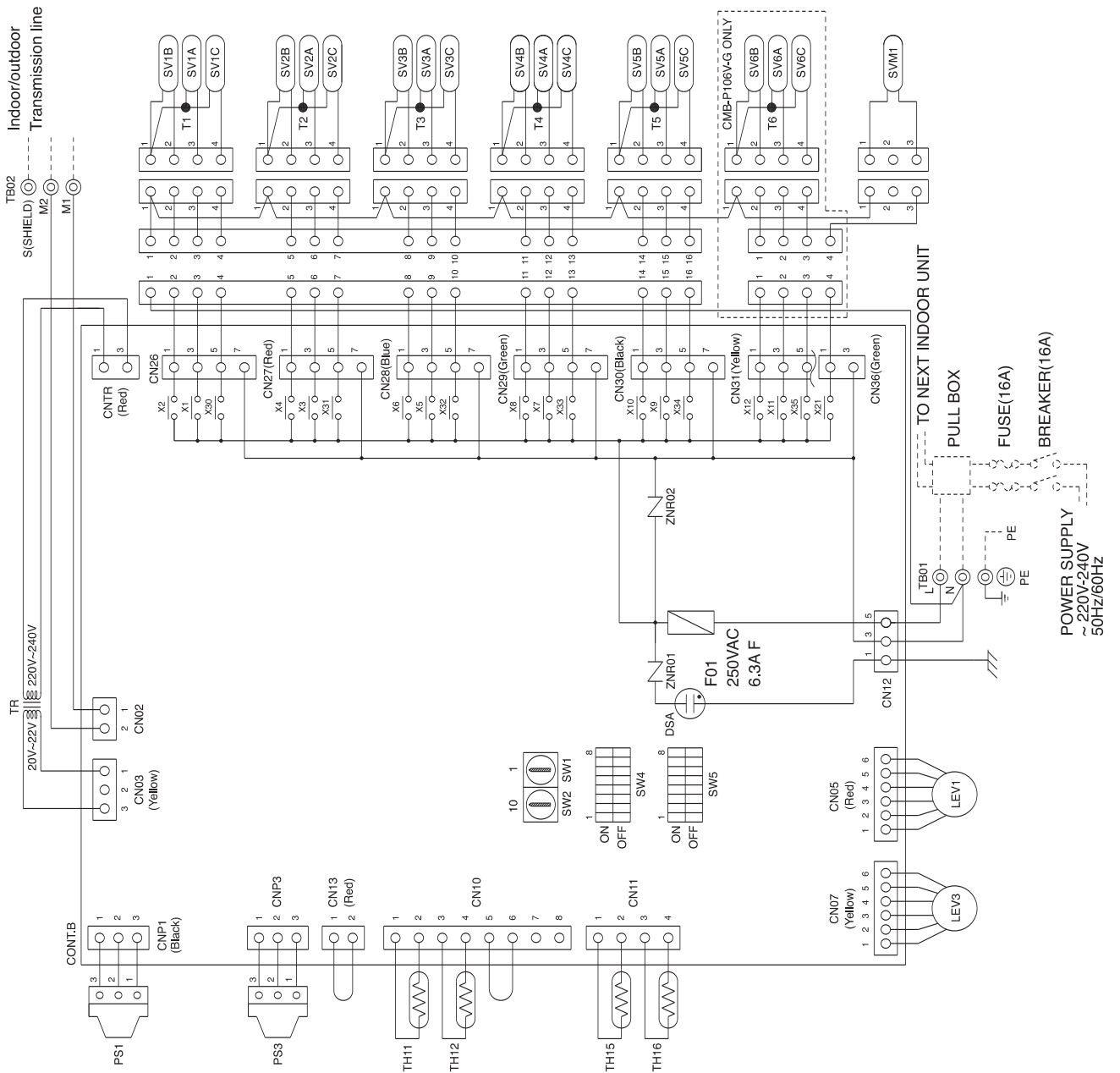
## CMB-P105,106V-G

Drw. : cmb-p105-106v-g-W656-842

Symbol explanation

Symbol	Name
TR	Transformer
TH11,12,15,16	Thermistor sensor
LEV1,3	Expansion valve
PS1,3	Pressure sensor
CONT.B	Circuit BC board controller
TB01	Terminal block (for power source)
TB02	Terminal block (for Transmission)
SV1~6A,B,C	Solenoid valve
SVM1	Solenoid valve
T1~6	Terminal
F01	Fuse AC250V 6.3A F

Note: 1. TB02 is transmission terminal block.  
Never connect power line to it.  
2. The initial set values of switch on CONT.B are as follows.  
SW1:0  
SW2:0



A  
B  
C  
D  
E  
F  
G  
H  
I  
J  
K  
L  
M  
N  
O  
P  
Q  
R  
S  
T  
U  
V  
W  
X  
Y  
Z

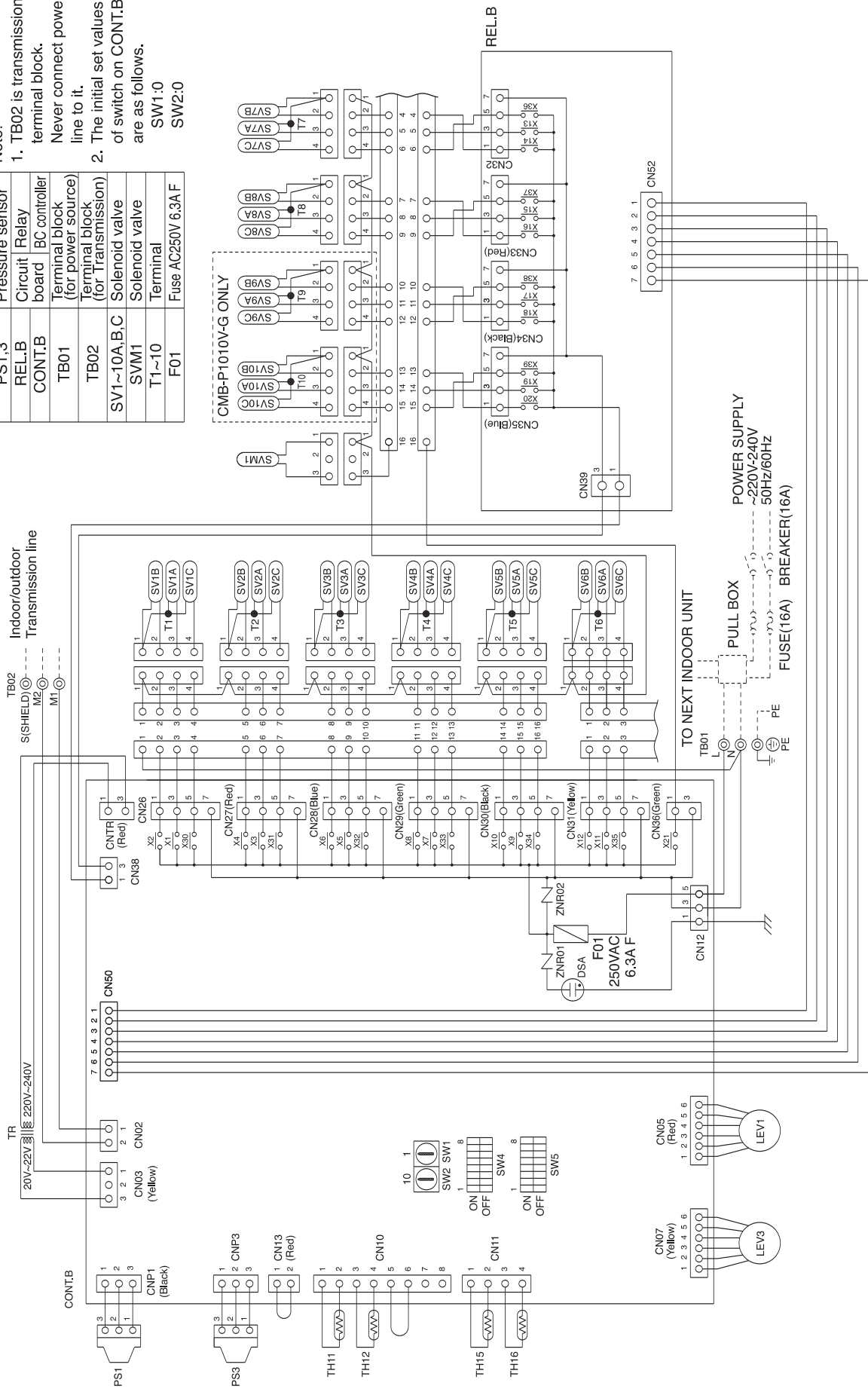
## CMB-P108,1010V-G

Drw. : cmb-p108-1010v-g-W656-843

Symbol explanation

Symbol	Name
TR	Transformer
TH11,12,15,16	Thermistor sensor
LEV1,3	Expansion valve
PS1,3	Pressure sensor
REL.B	Circuit Relay
CONT.B	BC controller board
TB01	Terminal block (for power source)
TB02	Terminal block (for Transmission)
SV1~10A,B,C	Solenoid valve
SVM1	Solenoid valve
T1~10	Terminal
F01	Fuse AC250V 6.3A F

- Note:
- TB02 is transmission terminal block. Never connect power line to it.
  - The initial set values of switch on CONT.B are as follows.  
SW1:0  
SW2:0

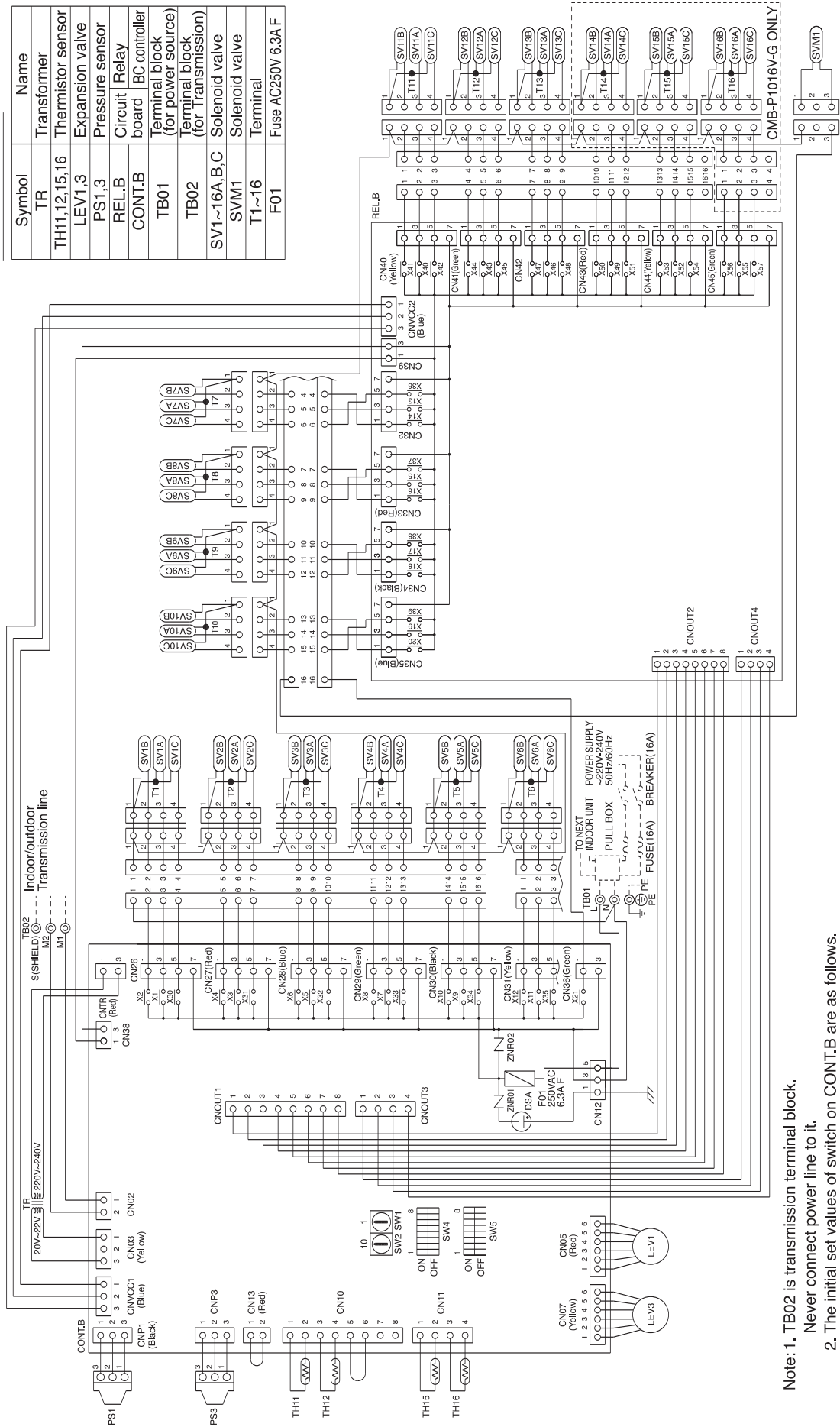


## CMB-P1013,1016V-G

Draw. : cmb-p1013-1016v-g-W656-844

Symbol explanation

Symbol	Name
TR	Transformer
TH11,12,15,16	Thermistor sensor
LEV1,3	Expansion valve
PS1,3	Pressure sensor
RELB	Circuit Relay
CONT.B	BC controller board
TB01	Terminal block (for power source)
TB02	Terminal block (for Transmission)
SV1~16A,B,C	Solenoid valve
SVM1	Solenoid valve
T1~16	Terminal
F01	Fuse AC250V 6.3A F



- Note: 1. TB02 is transmission terminal block.  
 Never connect power line to it.  
 2. The initial set values of switch on CONT.B are as follows.  
 SW1:0  
 SW2:0

## CMB-P108,1010V-GA

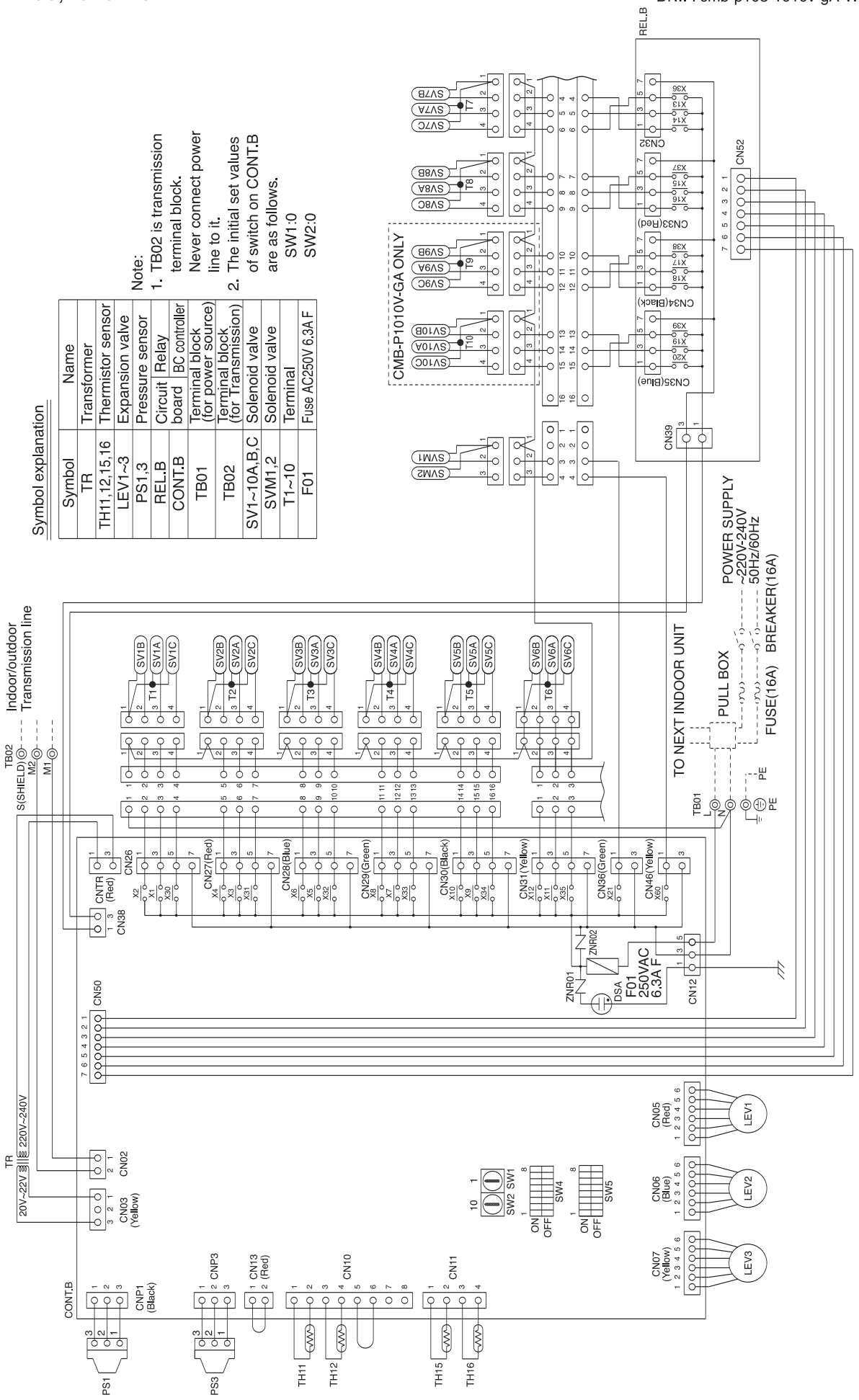
Draw. : cmb-p108-1010v-gA-W656-845

Symbol explanation

Symbol	Name
TR	Transformer
TH11,12,15,16	Thermistor sensor
LEV1~3	Expansion valve
PS1,3	Pressure sensor
REL.B	Circuit Relay
CONT.B	board BC controller
TB01	Terminal block (for power source)
TB02	Terminal block (for Transmission)
SV1~10A,B,C	Solenoid valve
SVM1,2	Solenoid valve
T1~10	Terminal
F01	Fuse AC250V 6.3A F

Note:  
 1. TB02 is transmission terminal block. Never connect power line to it.  
 2. The initial set values of switch on CONT.B are as follows.  
 SW1:0  
 SW2:0

CMB-P1010V-GA ONLY



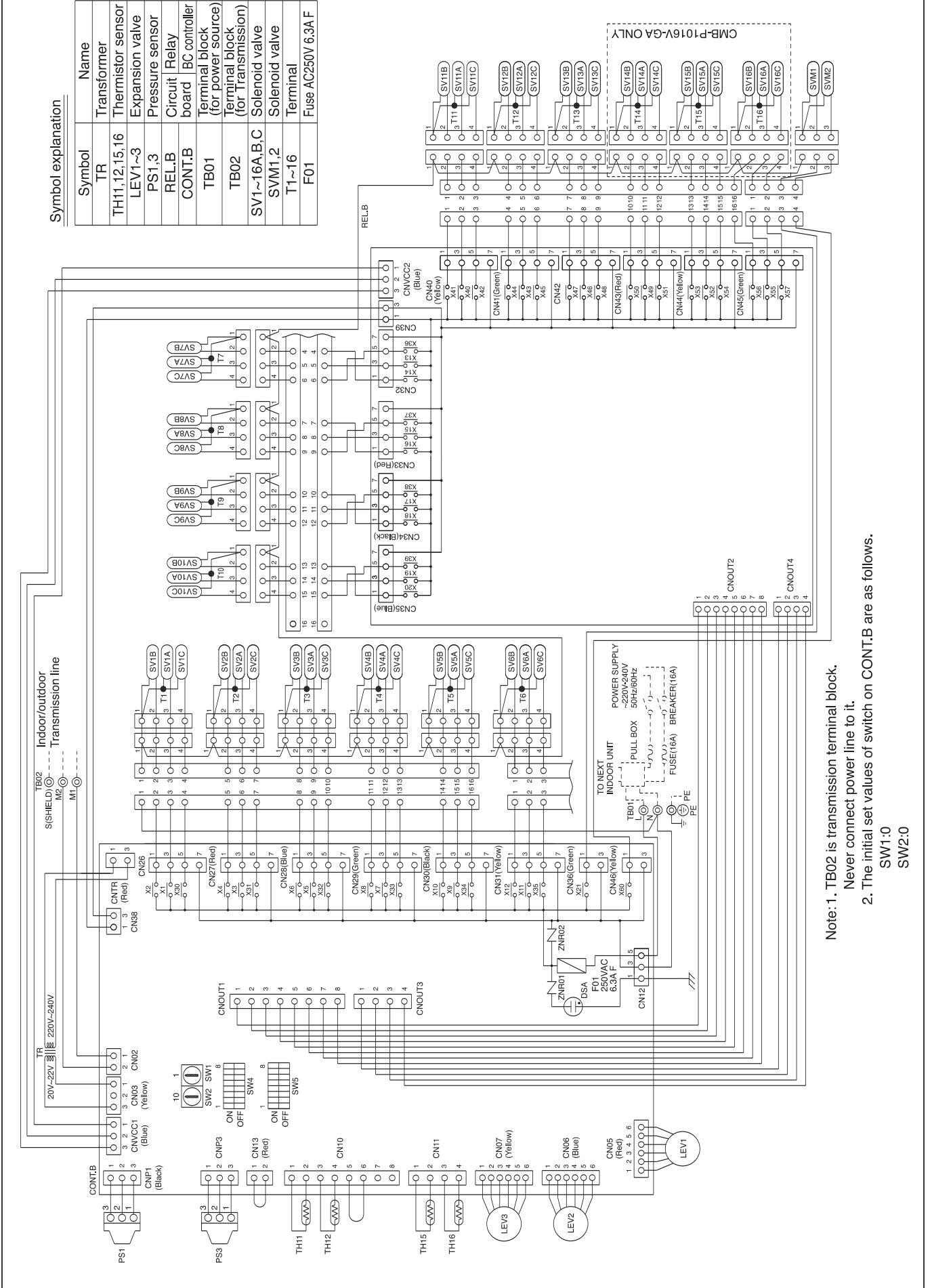


## CMB-P1013,1016V-GA

Draw. : cmb-p1013-1016v-ga-W656-846

Symbol explanation

Symbol	Name
TR	Transformer
TH1,12,15,16	Thermistor sensor
LEV1~3	Expansion valve
PS1,3	Pressure sensor
REL.B	Circuit Relay
CONT.B	board IC controller
TB01	Terminal block (for power source)
TB02	Terminal block (for Transmission)
SV1~16A,B,C	Solenoid valve
SVM1,2	Solenoid valve
T1~16	Terminal
F01	Fuse AC250V 6.3A F



- Note: 1. TB02 is transmission terminal block.  
 Never connect power line to it.  
 2. The initial set values of switch on CONT.B are as follows.  
 SW1:0  
 SW2:0

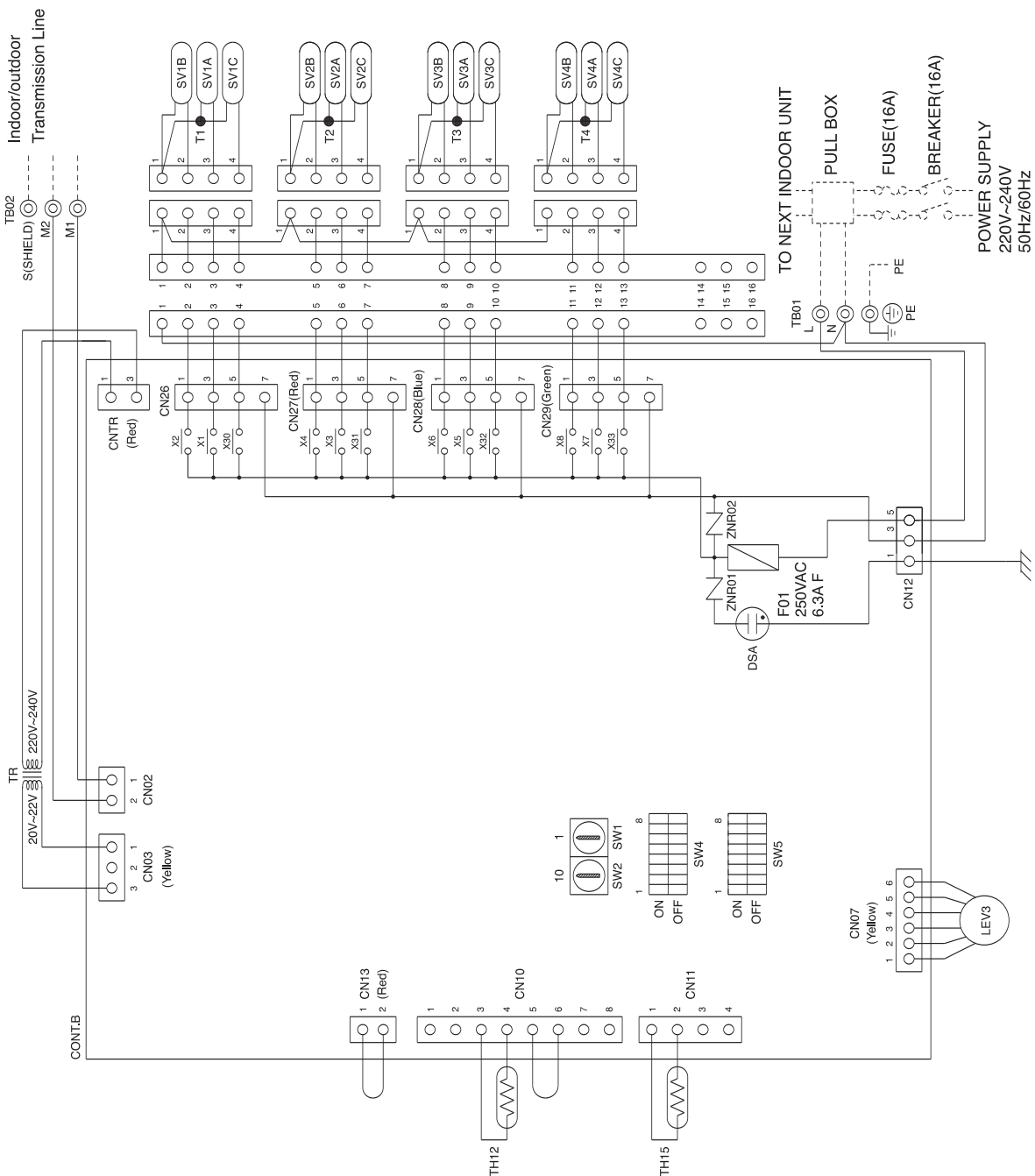
## CMB-P104V-GB

Drw. : cmb-p104v-gB-W656-847

### Symbol explanation

Symbol	Name
TR	Transformer
TH12,15	Thermistor sensor
LEV3	Expansion valve
CONT.B	Circuit board controller
TB01	Terminal block (for power source)
TB02	Terminal block (for transmission)
SV1~4A,B,C	Solenoid valve
T1~4	Terminal
F01	Fuse AC250V 6.3A F

Note: 1. TB02 is transmission terminal block.  
Never connect power line to it.  
2. The initial set values of switch on CONT.B are as follows.  
SW1:0  
SW2:0



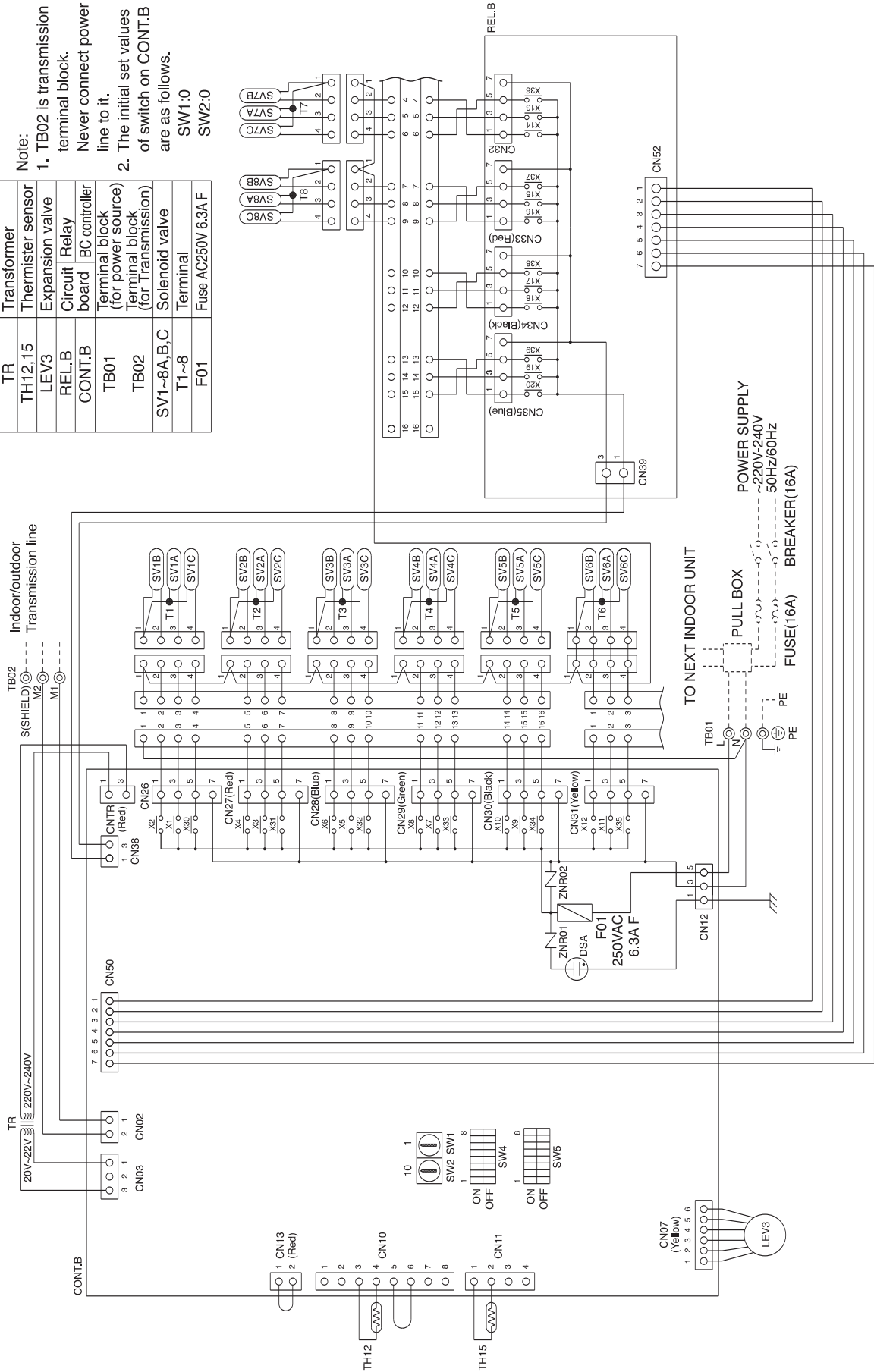
## CMB-P108V-GB

Drw. : cmb-p108v-gB-W656-848

Symbol explanation

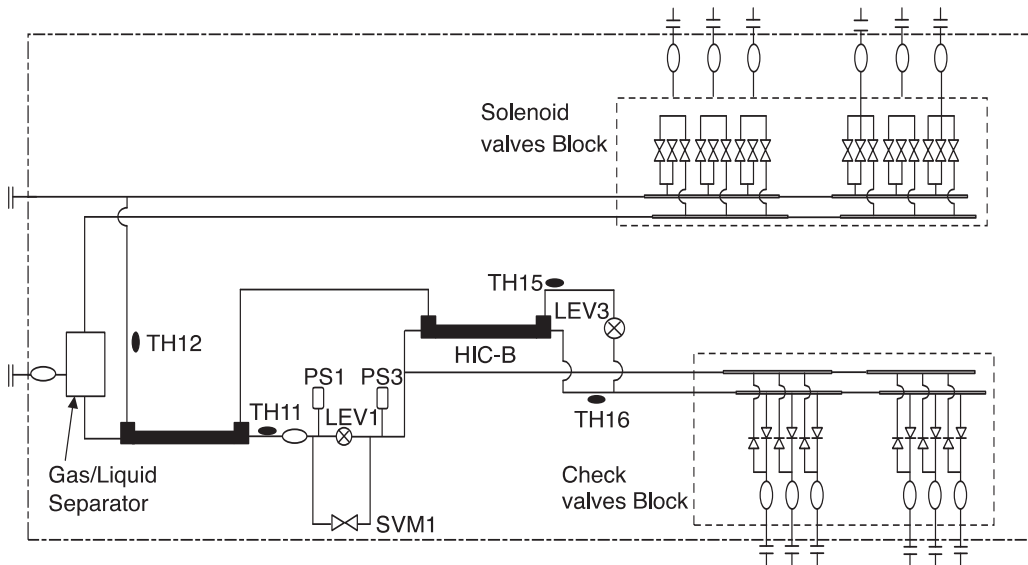
Symbol	Name
TR	Transformer
TH12,15	Thermister sensor
LEV3	Expansion valve
REL.B	Circuit Relay
CONT.B	board BC controller
TB01	Terminal block (for power source)
TB02	Terminal block (for Transmission)
SV1~8A,B,C	Solenoid valve
T1~8	Terminal
F01	Fuse AC250V 6.3A F

Note:  
 1. TB02 is transmission terminal block. Never connect power line to it.  
 2. The initial set values of switch on CONT.B are as follows.  
 SW1:0  
 SW2:0



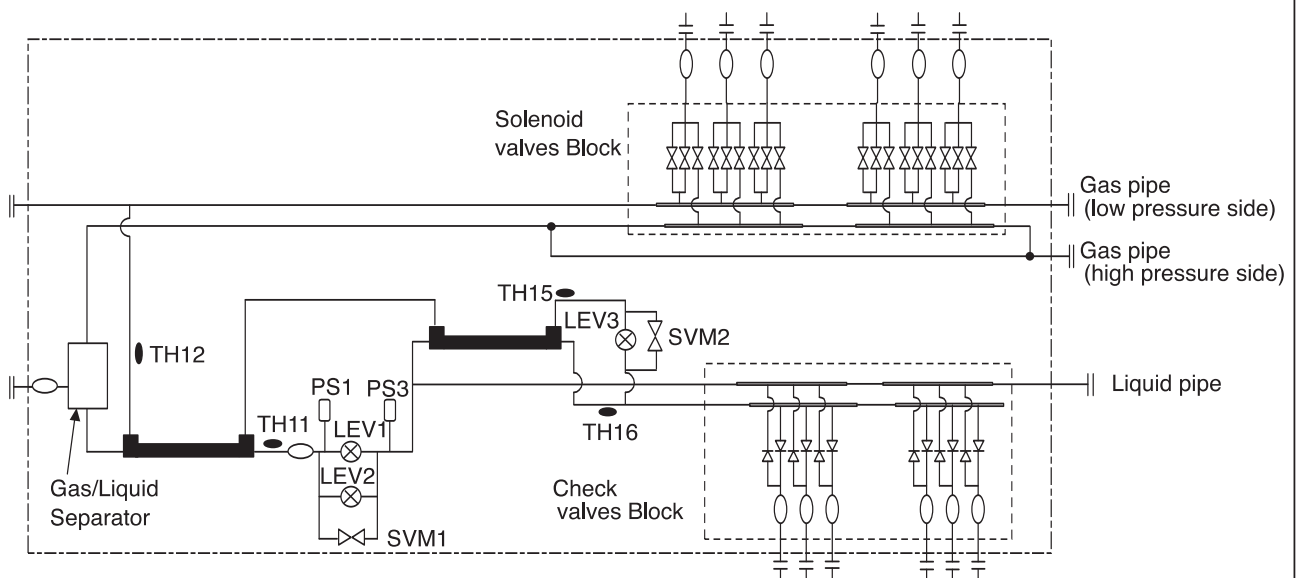
CMB-P104,105,106,108,1010,1013,1016V-G

Ref. : cmb-p-V-G



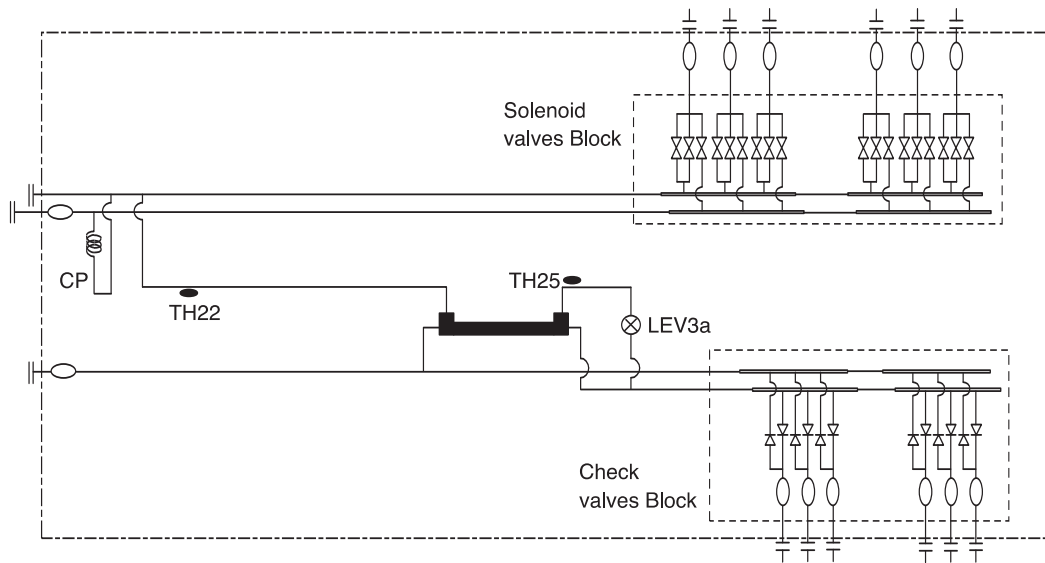
CMB-P108,1010,1013,1016V-GA

Ref. : cmb-p-V-GA



CMB-P104,108V-GB

Drw. : cmb-p-V-GB



- A
- B
- C
- D
- E
- F
- G
- H
- I
- J
- V<sub>a</sub>
- V<sub>b</sub>
- BC**